

VOR/DME JBR 115.85 Chan 105(Y)	APP CRS 227°	Rwy Idg TDZE 262 Apt Elev 262	6200
--	------------------------	---	-------------

VOR RWY 23

JONESBORO MUNI (JBR)

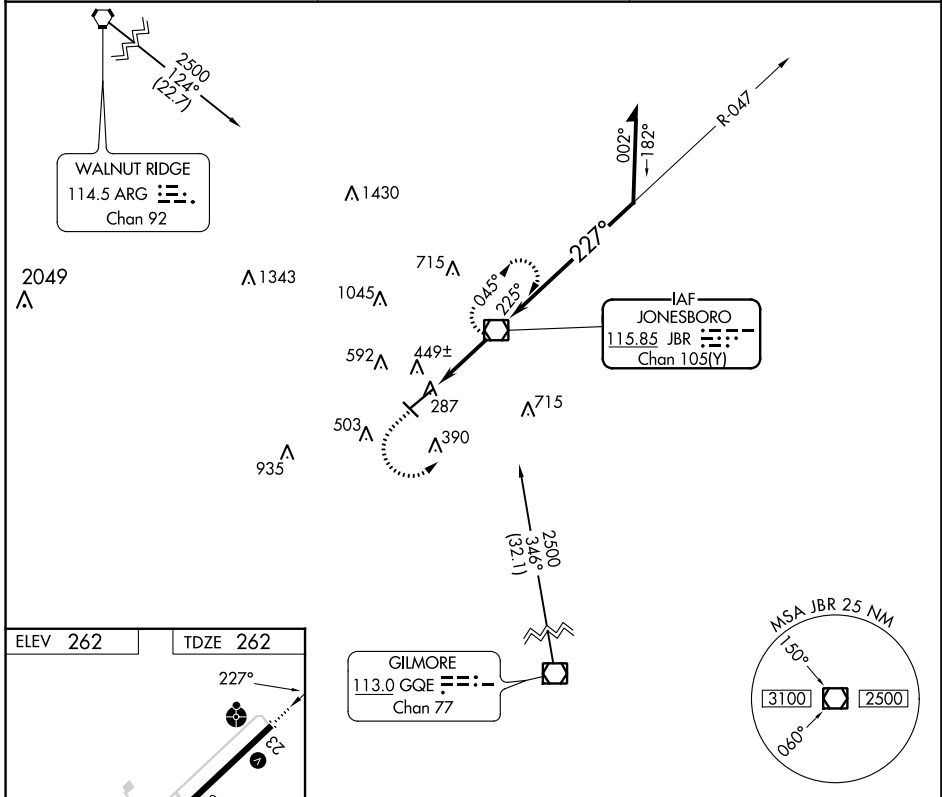
⚠ Circling Rwy 31 NA at night. Circling NA northwest of Rwy 5-23.
 ⚠ Rwy 23 helicopter visibility reduction below 3/4 SM NA. When local altimeter not received, use Walnut Ridge altimeter setting and increase all MDAs 60 feet and S-23 Cat C/D visibility 1/8 SM and Circling Cat C 1/2 SM.

ODALS

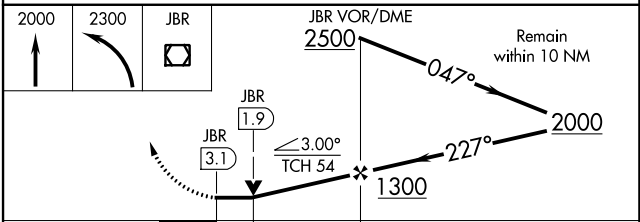
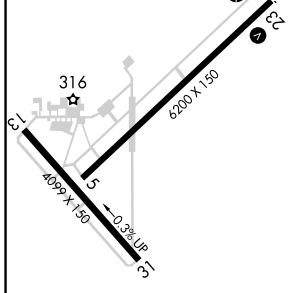


MISSED APPROACH: Climb to 2000 then climbing left turn to 2300 direct JBR VOR/DME and hold.

ASOS 118.525	MEMPHIS CENTER 120.075 289.4	UNICOM 123.0 (CTAF) 0
------------------------	--	---------------------------------



ELEV 262	TDZE 262
----------	----------



MIRL Rwy 5-23 and 13-31	FAF to MAP 3.1 NM
Knots	60 90 120 150 180
Min:Sec	3:06 2:04 1:33 1:14 1:02
CATEGORY	A B C D
S-23	700-3/4 438 (500-3/4) 700-1 1/8 438 (500-1 1/8)
CIRCLING	740-1 478 (500-1) 820-1 1/2 1080-2 3/4 558 (600-1 1/2) 818 (900-2 3/4)

SC-1, 22 FEB 2024 to 21 MAR 2024

SC-1, 22 FEB 2024 to 21 MAR 2024