

WAAS CH <b>93835</b> <b>W22A</b>	APP CRS <b>220°</b>	Rwy ldg TDZE Apt Elev	<b>5002</b> <b>182</b> <b>182</b>
--	------------------------	-----------------------------	---

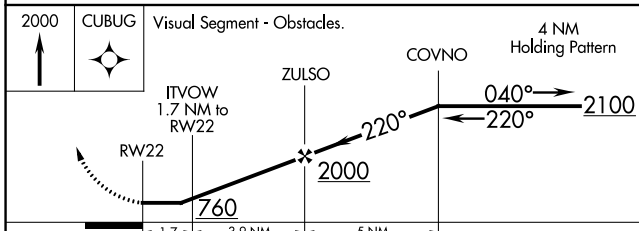
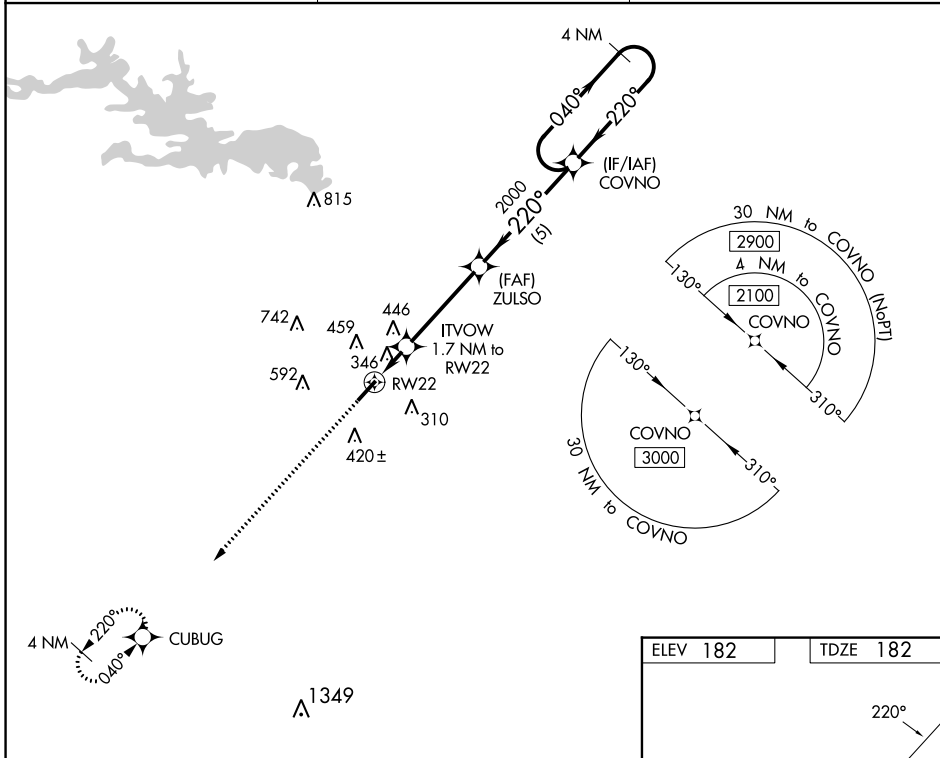
# RNAV (GPS) RWY 22

DEXTER B FLORENCE MEML FLD (ADF)

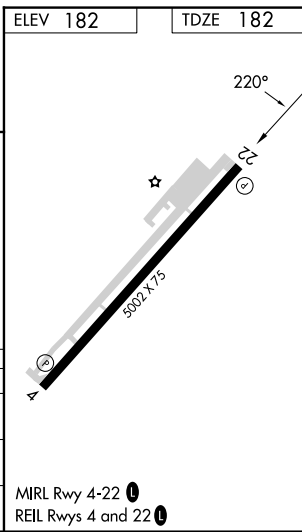
**▽** DME/DME RNP-0.3 NA. When local altimeter setting not received, use Hot Springs altimeter setting and increase all MDAs 120 feet, and increase LP and LNAV Cat C visibility  $\frac{3}{8}$  SM and Circling Cat C visibility  $\frac{1}{2}$  mile. Night landing: Rwy 22 NA. Helicopter visibility reduction below 1 SM NA.

**△ NA** MISSED APPROACH: Climb to 2000 direct CUBUG and hold.

AWOS-3PT <b>118.175</b>	MEMPHIS CENTER <b>128.475 377.15</b>	UNICOM <b>122.7 (CTAF) 0</b>
----------------------------	---	---------------------------------



CATEGORY	A	B	C	D
LP MDA	600-1	418 (500-1)	600-1 $\frac{3}{8}$ 418 (500-1 $\frac{3}{8}$ )	NA
LNAV MDA	680-1	498 (500-1)	680-1 $\frac{3}{8}$ 498 (500-1 $\frac{3}{8}$ )	NA
<b>C</b> CIRCLING	760-1 578 (600-1)	800-1 618 (700-1)	1040-2 $\frac{1}{2}$ 858 (900-2 $\frac{1}{2}$ )	NA



SC-1, 22 FEB 2024 to 21 MAR 2024

SC-1, 22 FEB 2024 to 21 MAR 2024

WAAS CH <b>49135</b> <b>W04A</b>	APP CRS <b>040°</b>	Rwy Idg <b>5002</b> TDZE <b>181</b> Apt Elev <b>182</b>
--	------------------------	---

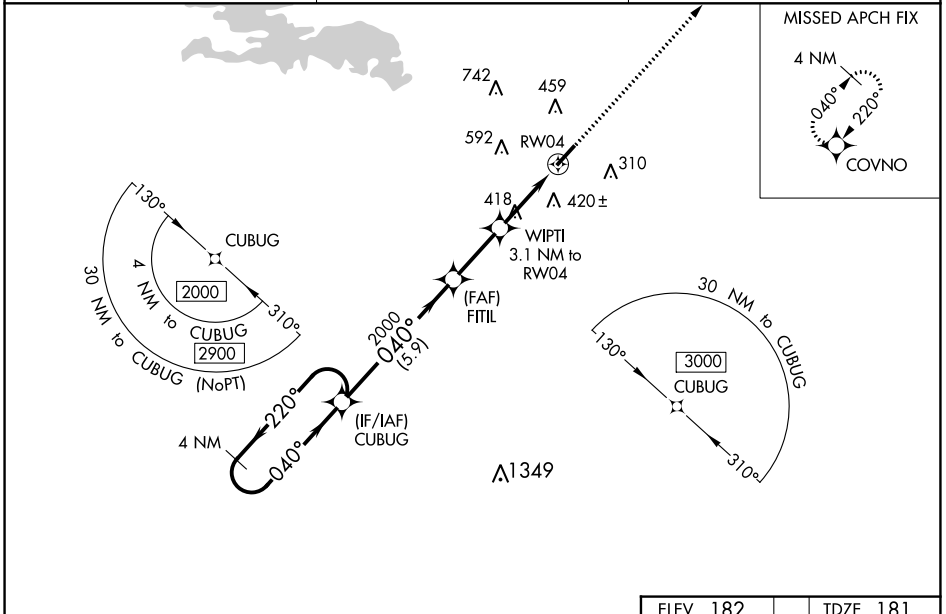
# RNAV (GPS) RWY 4

DEXTER B FLORENCE MEML FLD (ADF)

**⚠** DME/DME RNP-0.3 NA. When local altimeter setting not received use Hot Springs altimeter setting and increase all DA 103 feet and MDA 120 feet and increase LPV all Cats visibility  $\frac{1}{8}$  mile and LNAV/VNAV all Cats visibility and Circling Cat C visibility  $\frac{1}{2}$  mile.  
**⚠** NA For uncompensated Baro-VNAV systems, LNAV/VNAV NA below -15°C (5°F) or above 54°C (130°F). Baro-VNAV NA when using Hot Springs altimeter setting. Helicopter visibility reduction below  $\frac{3}{4}$  SM NA. Night landing: Rwy 22 NA.

MISSED APPROACH: Climb to 2100 direct COVNO and hold.

AWOS-3PT <b>118.175</b>	MEMPHIS CENTER <b>128.475 377.15</b>	UNICOM <b>122.7 (CTAF)</b>
----------------------------	---	-------------------------------



SC-1, 22 FEB 2024 to 21 MAR 2024

SC-1, 22 FEB 2024 to 21 MAR 2024

ELEV 182		TDZE 181		
VGSI and RNAV glidepath not coincident (VGSI Angle 3.00/TCH 23). 4 NM Holding Pattern CUBUG FITIL 2000 WIPTI 3.1 NM to RW04 RW04 *LNAV only. GP 3.00° TCH 45 2100 COVNO 2000 040° 2000 040° 2000 040° 1200 5.9 NM 2.5 NM 3.1 NM				
CATEGORY	A	B	C	D
LPV DA		431-1 250 (300-1)		NA
LNAV/VNAV DA		669-1 $\frac{5}{8}$ 488 (500-1 $\frac{3}{8}$ )		NA
LNAV MDA	680-1	499 (500-1)	680-1 $\frac{3}{8}$ 499 (500-1 $\frac{3}{8}$ )	NA
<b>C</b> CIRCLING	760-1 578 (600-1)	800-1 618 (700-1)	1040-2 $\frac{1}{2}$ 858 (900-2 $\frac{1}{2}$ )	NA

MRL Rwy 4-22  
REIL Rwy 4 and 22