

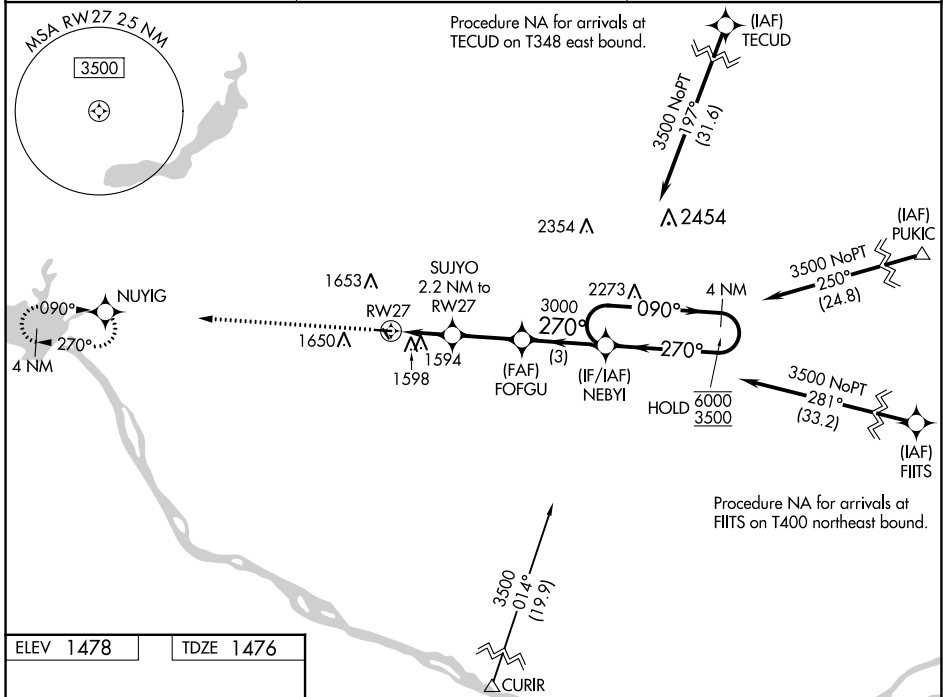
WAAS CH <b>40134</b> <b>W27A</b>	APP CRS <b>270°</b>	Rwy Idg TDZE Apt Elev	<b>3500</b> <b>1476</b> <b>1478</b>
--	------------------------	-----------------------------	---

# RNAV (GPS) RWY 27

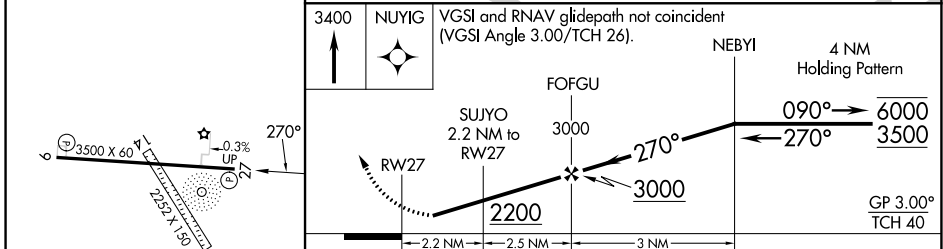
WAGNER MUNI (AGZ)

RNP APCH - GPS.	MISSED APPROACH: Climb to 3400 direct NUYIG and hold.
<p>⚠ Circling NA to Rwy 14 and 32. Rwy 27 helicopter visibility reduction below ¼ SM NA. Baro-VNAV NA. Use Yankton altimeter setting.</p>	

YKN AWOS-3PT <b>119.05</b>	MINNEAPOLIS CENTER <b>128.0 257.95</b>	AUNICOM <b>122.8 (CTAF) 1</b>
-------------------------------	---	----------------------------------



ELEV <b>1478</b>	TDZE <b>1476</b>
------------------	------------------



CATEGORY	A	B	C	D
LPV DA	1845-1	369 (400-1)		NA
LNAV/VNAV DA	2004-1½	528 (600-1½)		NA
LNAV MDA	1980-1	504 (600-1)		NA
<b>C</b> CIRCLING	2080-1	602 (700-1)		NA

NC-1, 22 FEB 2024 to 21 MAR 2024

NC-1, 22 FEB 2024 to 21 MAR 2024

MIRL Rwy 9-27 1

WAAS CH <b>53334</b> <b>W09A</b>	APP CRS <b>090°</b>	Rwy Idg TDZE <b>1478</b> Apt Elev <b>1478</b>
--	------------------------	---

# RNAV (GPS) RWY 9

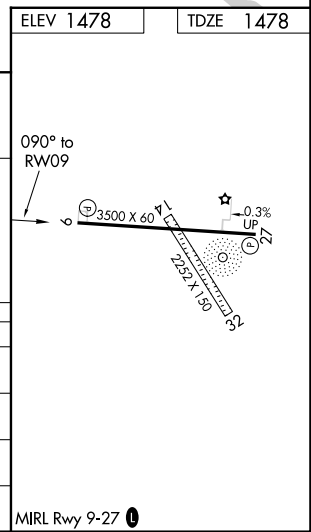
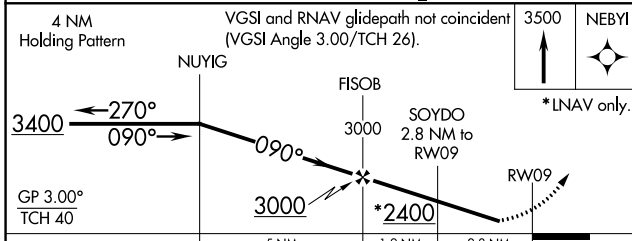
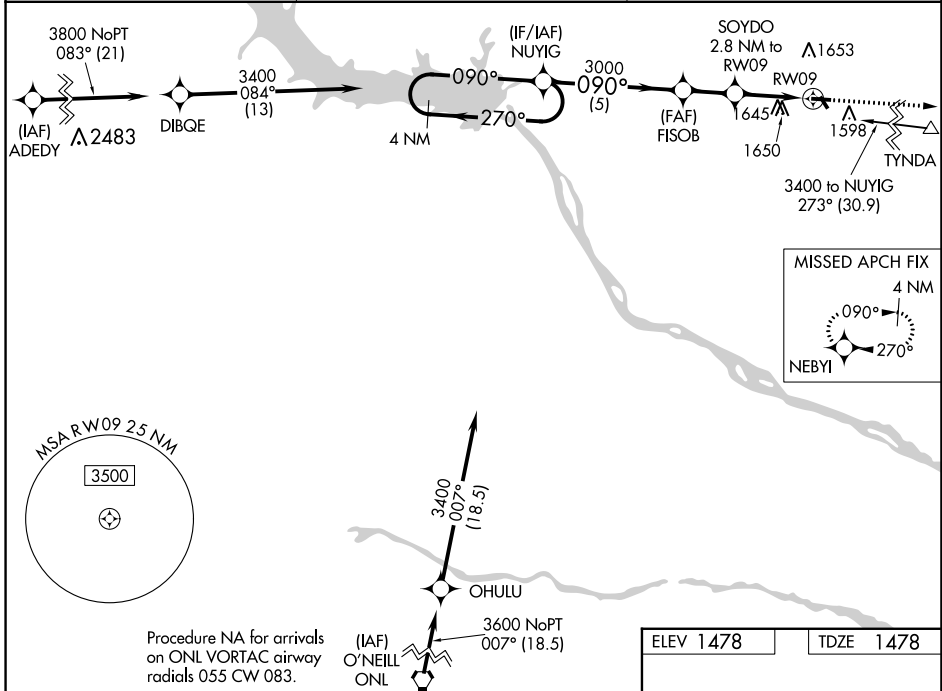
WAGNER MUNI (AGZ)

RNP APCH-GPS.

**NA** Rwy 9 helicopter visibility reduction below 3/4 SM NA. Circling NA to Rwy 14 and 32. Baro-VNAV NA. Use Yankton altimeter setting; when not received use O'Neill altimeter setting and increase all DA 51 feet, all MDA 60 feet and increase LPV all Cats visibility 1/8 mile, and LNAV/VNAV all Cats visibility 1/2 mile.

**MISSED APPROACH:**  
Climb to 3500 direct NEBYI and hold.

YKN AWOS-3PT <b>119.05</b>	MINNEAPOLIS CENTER <b>128.0 257.95</b>	AUNICOM <b>122.8 (CTAF) 0</b>
-------------------------------	---	----------------------------------



CATEGORY	A	B	C	D
LPV DA	1847-1	369 (400-1)		NA
LNAV/VNAV DA	2053-1 5/8	575 (600-1 5/8)		NA
LNAV MDA	2020-1	542 (600-1)		NA
<b>C</b> CIRCLING	2080-1	602 (700-1)		NA

NC-1, 22 FEB 2024 to 21 MAR 2024

NC-1, 22 FEB 2024 to 21 MAR 2024