

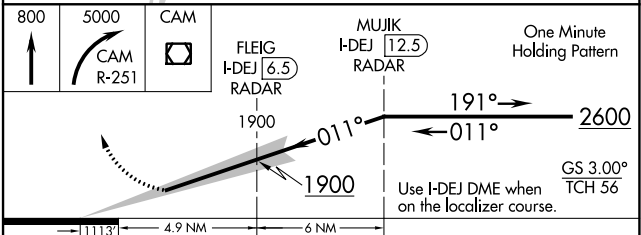
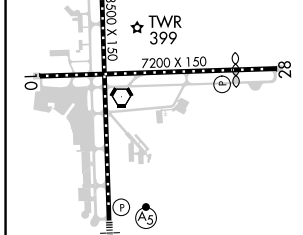
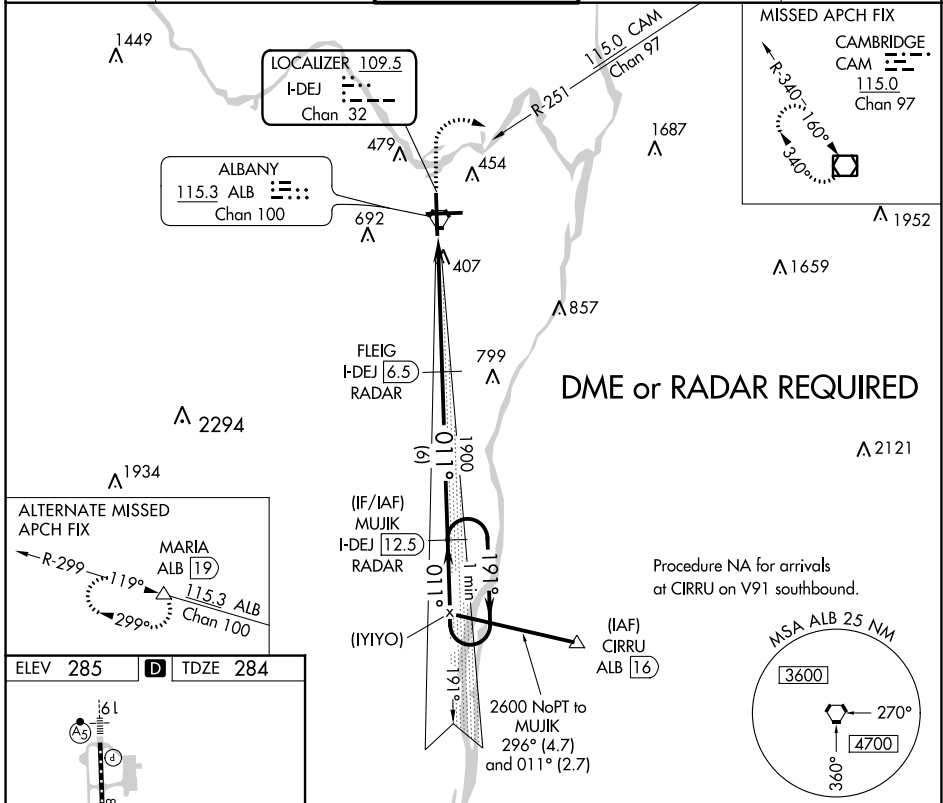
LOC/DME I-DEJ 109.5 Chan 32	APP CRS 011°	Rwy Idg TDZE Apt Elev	8500 284 285
--	------------------------	-----------------------------	---

ILS RWY 1 (SA CAT II)

ALBANY INTL (ALB)

▼ ▲	DME or RADAR required. Reduced Lighting: Requires specific OPSPEC, MSPEC, or LOA approval and use of autoland or HUD to touchdown.	MALSR 	MISSED APPROACH: Climb to 800 then climbing right turn to 5000 and on CAM VOR/DME R-251 to CAM VOR/DME and hold.
----------------------	--	-----------	--

D-ATIS 120.45	ALBANY APP CON 132.825 307.2	ALBANY TOWER 119.5 257.8	GND CON 121.7 348.6	CLNC DEL 127.50
-------------------------	--	------------------------------------	-------------------------------	---------------------------



CATEGORY	A	B	C	D
S-ILS 1	RA 100/12 100 DA 384			

SA CATEGORY II ILS - SPECIAL AIRCREW & AIRCRAFT CERTIFICATION REQUIRED

NE-2, 22 FEB 2024 to 21 MAR 2024

NE-2, 22 FEB 2024 to 21 MAR 2024

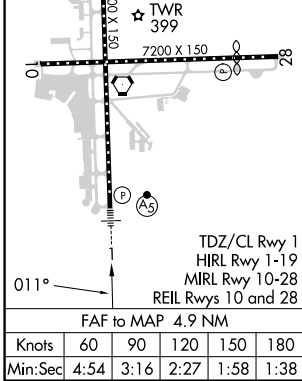
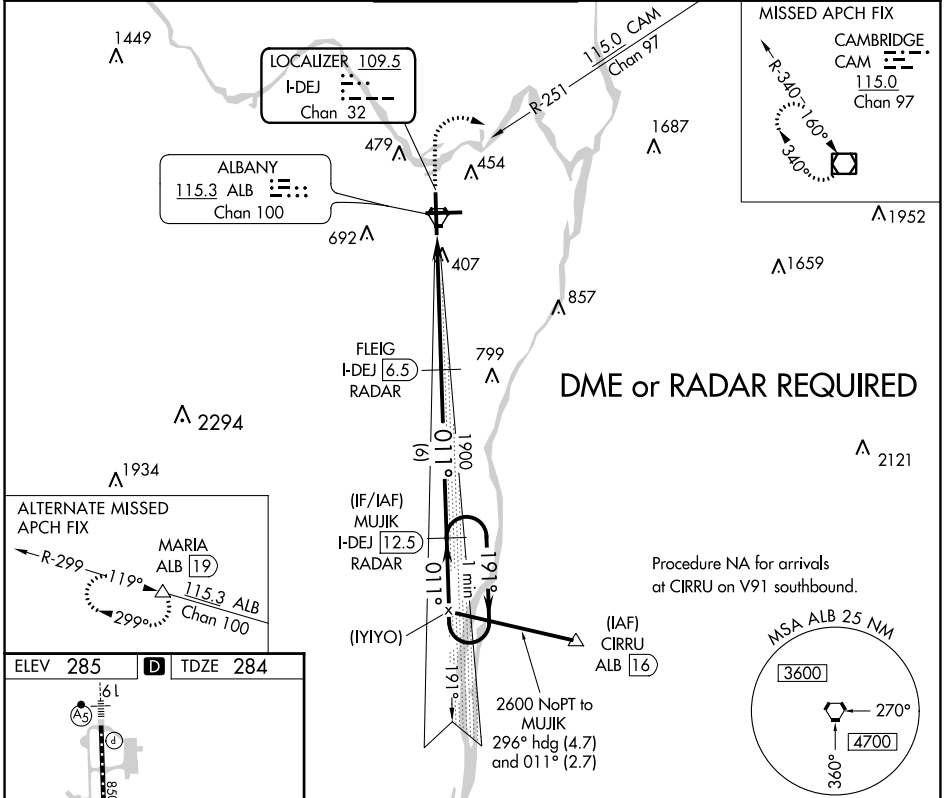
LOC/DME I-DEJ 109.5 Chan 32	APP CRS 011°	Rwy Idg TDZE Apt Elev	8500 284 285
--	------------------------	-----------------------------	---

ILS or LOC RWY 1

ALBANY INTL (ALB)

⚠ Circling NA west of Rwy 1-19. DME or RADAR required.	⚠ Circling Rwy 10 NA at night.	MALSR 	MISSED APPROACH: Climb to 800 then climbing right turn to 5000 and on CAM VOR/DME R-251 to CAM VOR/DME and hold.
---	---------------------------------------	-----------	--

D-ATIS 120.45	ALBANY APP CON 132.825 307.2	ALBANY TOWER 119.5 257.8	GND CON 121.7 348.6	CLNC DEL 127.50
-------------------------	--	------------------------------------	-------------------------------	---------------------------



800	5000	CAM	FLEIG I-DEJ RADAR	MUJIK I-DEJ RADAR	One Minute Holding Pattern
* LOC only.					
CATEGORY	A	B	C	D	
S-ILS 1	484/18		200 (200-1/2)		
S-LOC 1	720/24	436 (500-1/2)	720/40	436 (500-3/4)	
C CIRCLING	820-1	535 (600-1)	860-1 1/2	960-2 1/4	
			575 (600-1/2)	675 (700-2/4)	

NE-2, 22 FEB 2024 to 21 MAR 2024

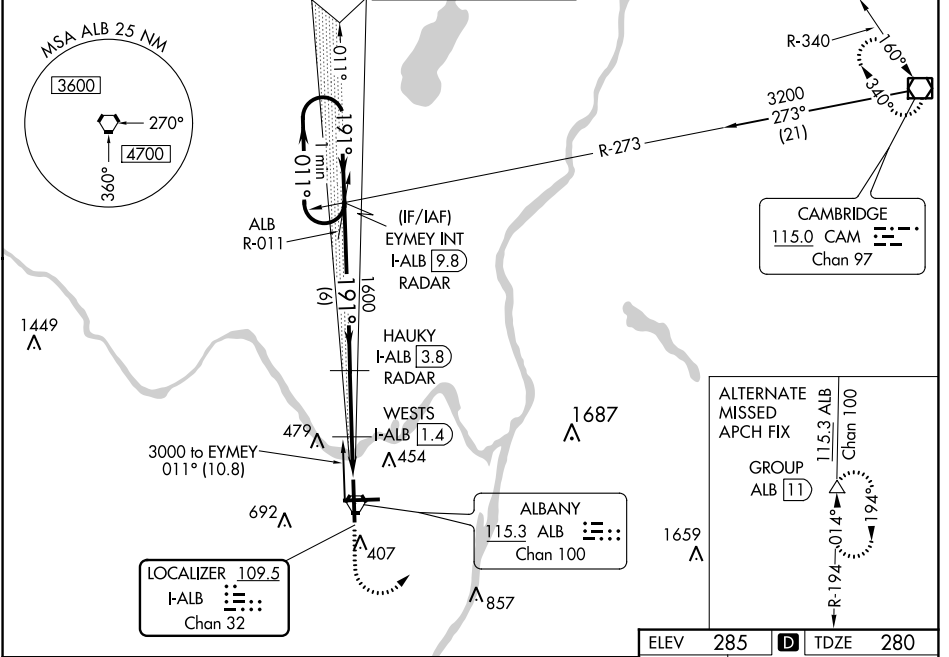
NE-2, 22 FEB 2024 to 21 MAR 2024

LOC/DME I-ALB 109.5 Chan 32	APP CRS 191°	Rwy Idg TDZE Apt Elev 8500 280 285
--	------------------------	--

ILS or LOC RWY 19

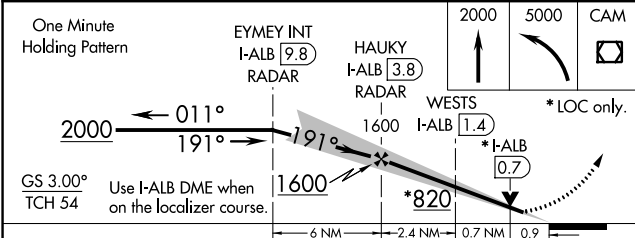
ALBANY INTL (ALB)

		MISSED APPROACH: Climb to 2000 then climbing left turn to 5000 direct CAM VOR/DME and hold.		
			D-ATIS 120.45	ALBANY APP CON 132.825 307.2



NE-2, 22 FEB 2024 to 21 MAR 2024

NE-2, 22 FEB 2024 to 21 MAR 2024



ELEV	285	D	TDZE	280
------	-----	----------	------	-----

FAF to MAP 4 NM					
Knots	60	90	120	150	180
Min:Sec	4:00	2:40	2:00	1:36	1:20

CATEGORY	A	B	C	D
S-ILS 19	480/18 200 (200-½)			
S-LOC 19	820/24	540 (600-½)	820/55	540 (600-1)
C CIRCLING	820-1	535 (600-1)	860-1½	960-2¼
WESTS FIX MINIMUMS				
S-LOC 19	620/24	340 (400-½)	620/26	340 (400-½)
C CIRCLING	820-1	535 (600-1)	820-1½	960-2¼

WAAS CH 97523 W10A	APP CRS 101°	Rwy Idg 6780 TDZE 278 Apt Elev 285
--	------------------------	---

RNAV (GPS) RWY 10

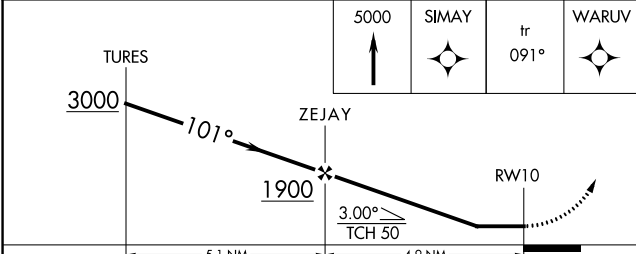
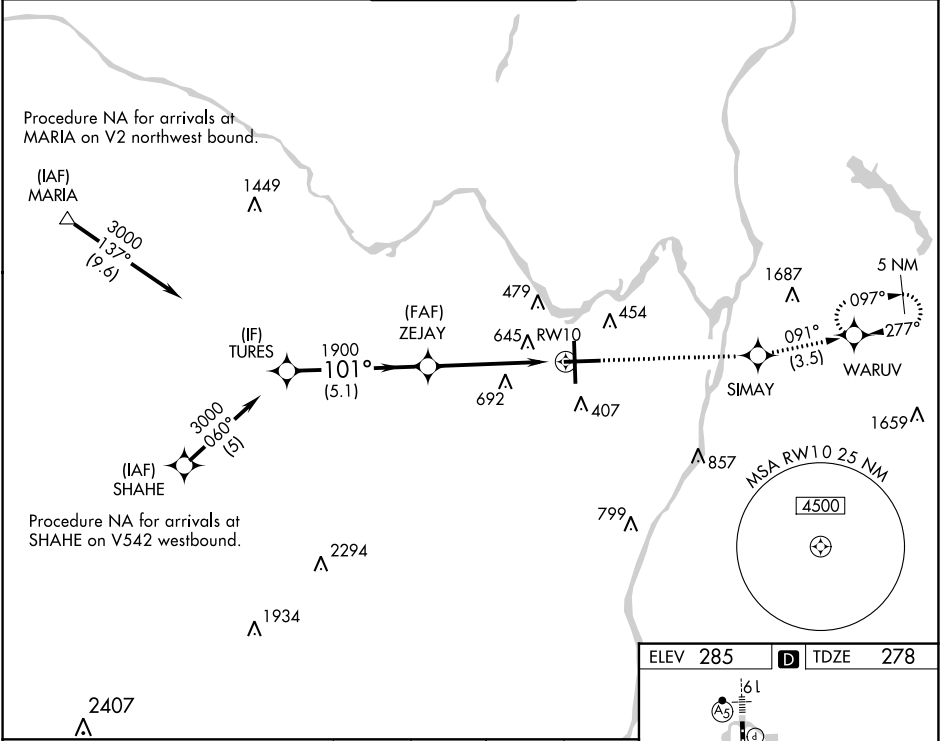
ALBANY INTL (ALB)

RNP APCH - GPS.

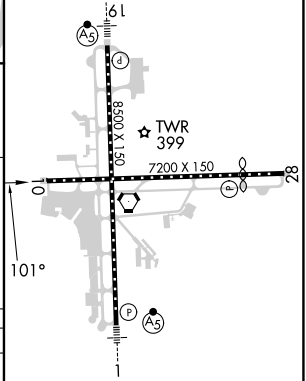
∇ Circling NA West of Rwy 1-19. Procedure NA at night.
▲ Rwy 10 helicopter visibility reduction below 1 SM NA.

MISSED APPROACH: Climb to 5000 direct SIMAY and on track 091° to WARUV and hold, continue climb-in-hold to 5000.

D-ATIS 120.45	ALBANY APP CON 132.825 307.2	ALBANY TOWER 119.5 257.8	GND CON 121.7 348.6	CLNC DEL 127.50
-------------------------	--	------------------------------------	-------------------------------	---------------------------



ELEV 285	D TDZE 278
----------	-------------------



CATEGORY	A	B	C	D
LP MDA	840-1 562 (600-1)		840-1 5/8 562 (600-1 5/8)	
LNAV MDA	900-1 622 (700-1)		900-1 3/4 622 (700-1 3/4)	
C CIRCLING	900-1 615 (700-1)		900-1 3/4 615 (700-1 3/4)	960-2 1/4 675 (700-2 1/4)

TDZ/CL Rwy 1
 HIRL Rwy 1-19
 MIRL Rwy 10-28
 REIL Rwy 10 and 28

NE-2, 22 FEB 2024 to 21 MAR 2024

NE-2, 22 FEB 2024 to 21 MAR 2024

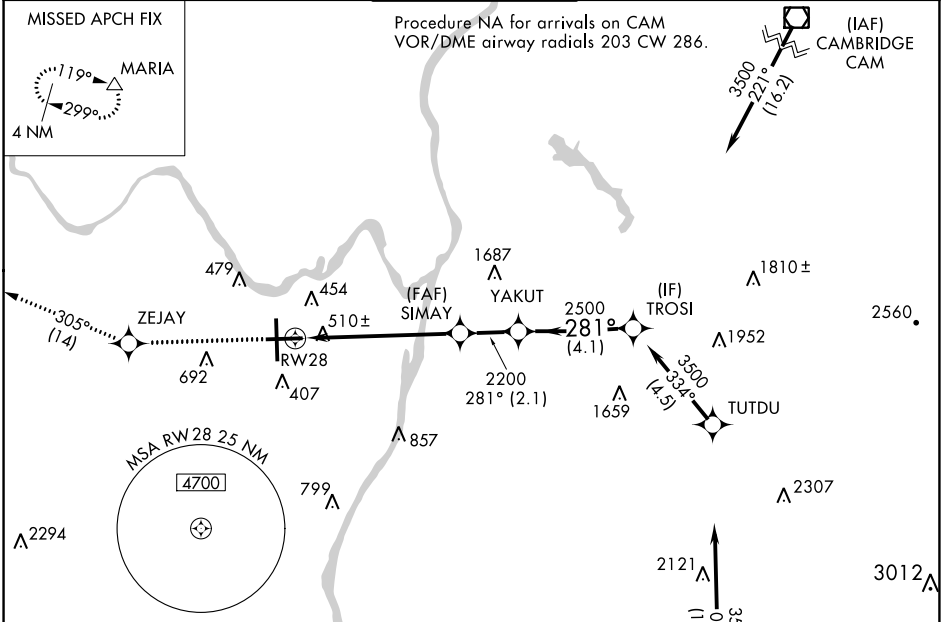
WAAS CH 78124 W28A	APP CRS 281°	Rwy Idg TDZE Apt Elev	6007 285 285
--	------------------------	-----------------------------	---

RNAV (GPS) RWY 28

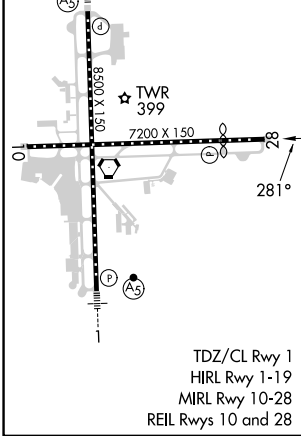
ALBANY INTL (ALB)

RNP APCH - GPS.		MISSED APPROACH: Climb to 3500 direct ZEJAY and on track 305° to MARIA and hold.	
<p>▼ For uncompensated Baro-VNAV systems, LNAV/VNAV NA below -18°C or above 42°C. Circling NA west of Rwy 1-19. Circling Rwy 10 NA at night. When VGSI inop, procedure NA at night. Rwy 28 helicopter visibility reduction below 1 SM NA.</p>			

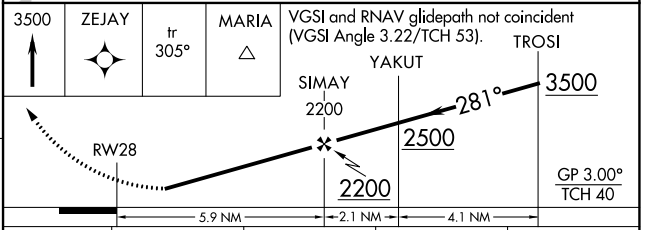
D-ATIS 120.45	ALBANY APP CON 132.825 307.2	ALBANY TOWER 119.5 257.8	GND CON 121.7 348.6	CLNC DEL 127.50
-------------------------	--	------------------------------------	-------------------------------	---------------------------



ELEV 285	D	TDZE 285
----------	----------	----------



Procedure NA for arrivals at CANAN on V487 southwest bound and V130 southeast bound.



CATEGORY	A	B	C	D
LPV DA	783-1 ³ / ₄ 498 (500-1 ³ / ₄)			
LNAV/VNAV DA	825-1 ⁷ / ₈ 540 (600-1 ⁷ / ₈)			
LNAV MDA	780-1	495 (500-1)	780-1 ³ / ₈	495 (500-1 ³ / ₈)
C CIRCLING	820-1	535 (600-1)	860-1 ¹ / ₂ 575 (600-1 ¹ / ₂)	960-2 ¹ / ₄ 675 (700-2 ¹ / ₄)

NE-2, 22 FEB 2024 to 21 MAR 2024

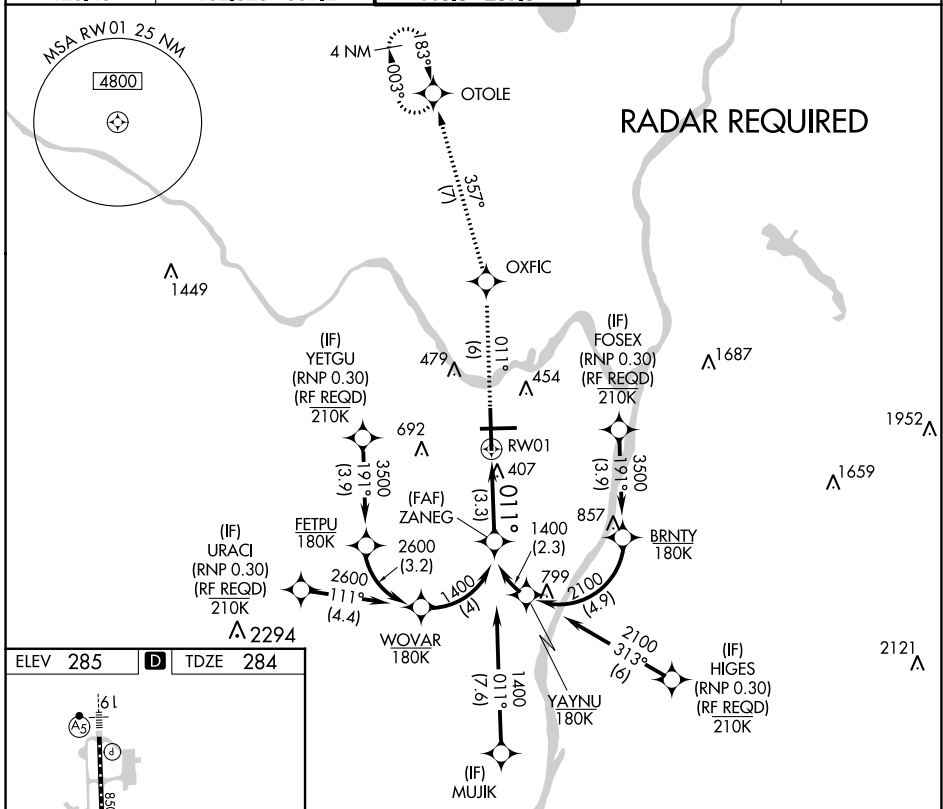
NE-2, 22 FEB 2024 to 21 MAR 2024

APP CRS	Rwy Idg	8500
011°	TDZE	284
	Apt Elev	285

RNAV (RNP) Z RWY 1

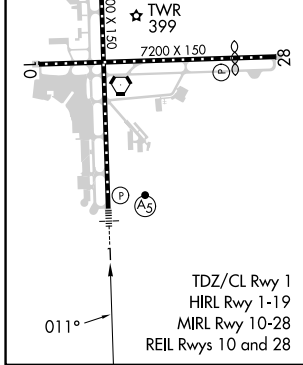
ALBANY INTL (ALB)

<p>▼ GPS required. For uncompensated Baro-VNAV systems, procedure NA below -15°C (3°F) or above 47°C (117°F). For inoperative MALSR, increase RNP 0.15 visibility to 1½ and RNP 0.30 visibility to 1½.</p>	<p>MALSR</p>		<p>MISSED APPROACH: Climb to 3000 on track 011° to OXFIC and on track 357° to OTOLE and hold.</p>		
	D-ATIS	ALBANY APP CON	ALBANY TOWER	GND CON	CLNC DEL
120.45	132.825 307.2	119.5 257.8	121.7 348.6	127.50	

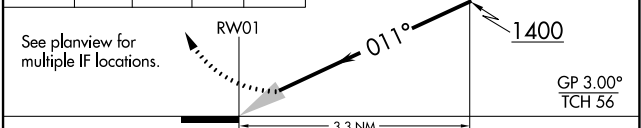


NE-2, 22 FEB 2024 to 21 MAR 2024

NE-2, 22 FEB 2024 to 21 MAR 2024



3000	OXFIC	OTOLE	ZANEG
↑	tr 011°	tr 357°	1400





CATEGORY	A	B	C	D
RNP 0.15 DA		656/40	372 (400-¾)	
RNP 0.30 DA		727/50	443 (500-1)	

AUTHORIZATION REQUIRED

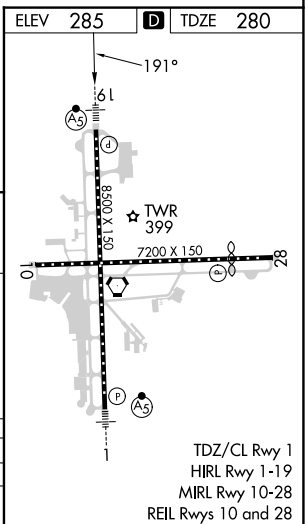
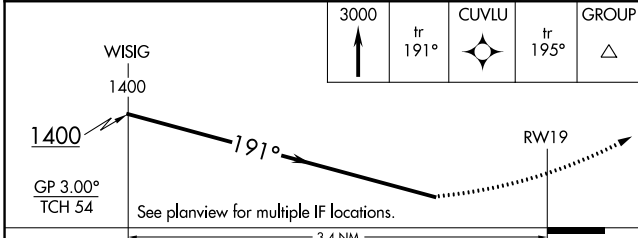
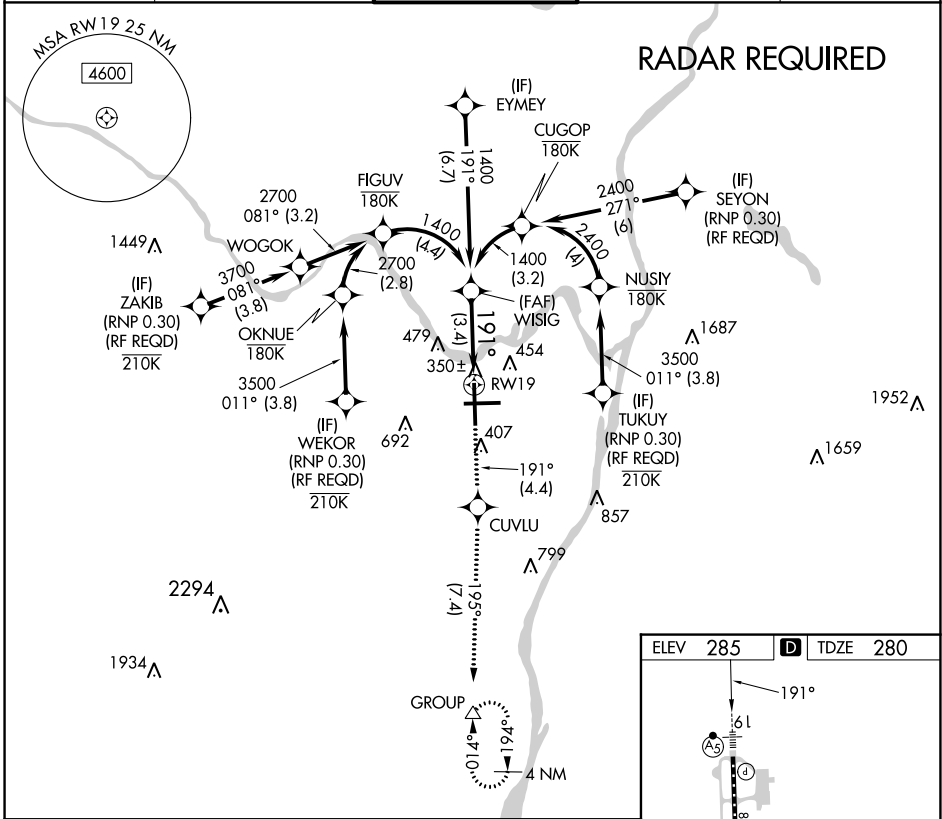
APP CRS	Rwy Idg	8500
191°	TDZE	280
	Apt Elev	285

RNAV (RNP) Z RWY 19

ALBANY INTL (ALB)

RNP AR APCH.	MALSR 	MISSED APPROACH: Climb to 3000 on track 191° to CUVLU and on track 195° to GROUP and hold.
 For uncompensated Baro-VNAV systems, procedure NA below -15°C or above 47°C. For inop ALS increase RNP 0.30 visibility to 1 1/2.		

D-ATIS 120.45	ALBANY APP CON 132.825 307.2	ALBANY TOWER 119.5 257.8	GND CON 121.7 348.6	CLNC DEL 127.50
-------------------------	--	------------------------------------	-------------------------------	---------------------------



CATEGORY	A	B	C	D
RNP 0.30 DA		763/50	483 (500-1)	

AUTHORIZATION REQUIRED

NE-2, 22 FEB 2024 to 21 MAR 2024

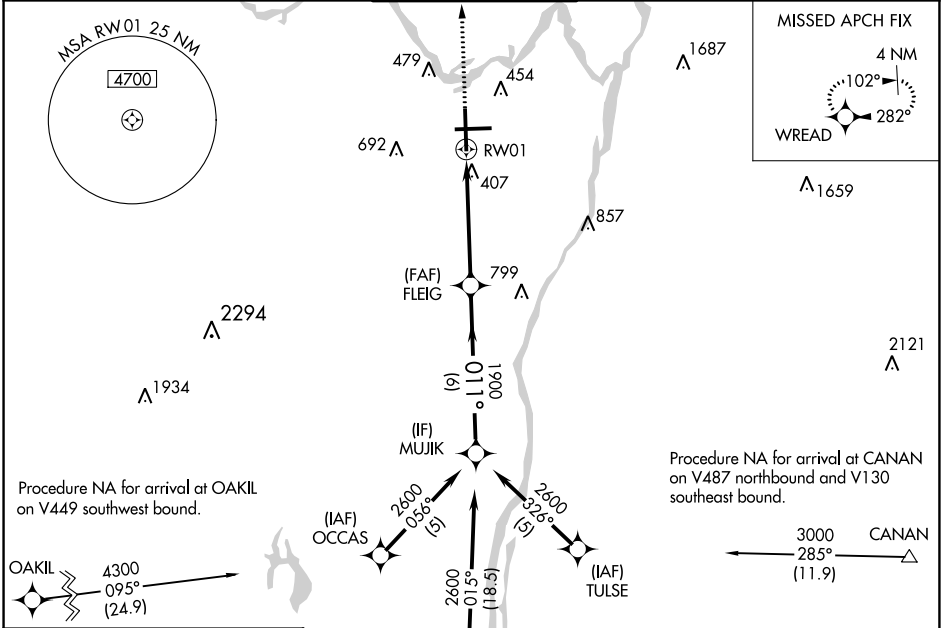
NE-2, 22 FEB 2024 to 21 MAR 2024

WAAS CH 97402	APP CRS 011°	Rwy Idg 8500 TDZE 284 Apt Elev 285
-------------------------	------------------------	---

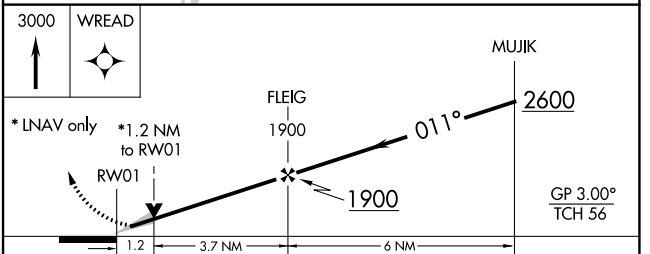
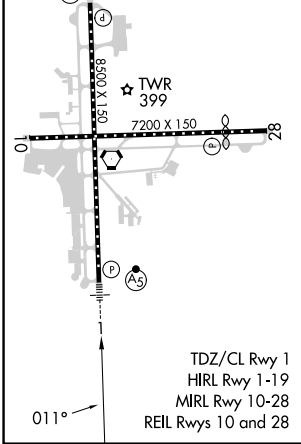
RNAV (GPS) Y RWY 1

ALBANY INTL (ALB)

RNP APCH - GPS.		MALSR		MISSED APPROACH: Climb to 3000 direct WREAD and hold, continue climb-in-hold to 3000.	
<p> For uncompensated Baro-VNAV systems, LNAV/VNAV NA below -18°C or above 42°C. Circling NA west of Rwy 1-19. Circling Rwy 10 NA at night.</p>					
D-ATIS 120.45	ALBANY APP CON 132.825 307.2	ALBANY TOWER 119.5 257.8	GND CON 121.7 348.6	CLNC DEL 127.50	



ELEV 285	D	TDZE 284
-----------------	----------	-----------------



CATEGORY	A	B	C	D
LPV DA	484/18		200 (200-½)	
LNAV/VNAV DA	687/45		403 (500-¾)	
LNAV MDA	720/24	436 (500-½)	720/40	436 (500-¾)
C CIRCLING	820-1	535 (600-1)	860-1½ 575 (600-1½)	960-2¼ 675 (700-2¼)

WAAS CH 56302 W19A	APP CRS 191°	Rwy Idg 8500 TDZE 280 Apt Elev 285
--	------------------------	---

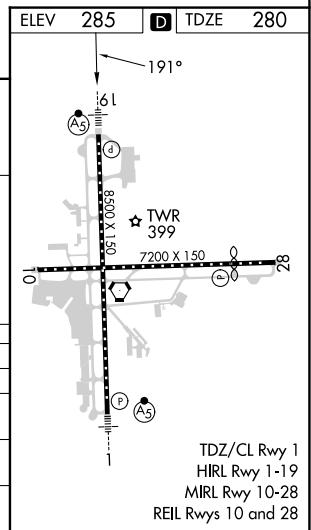
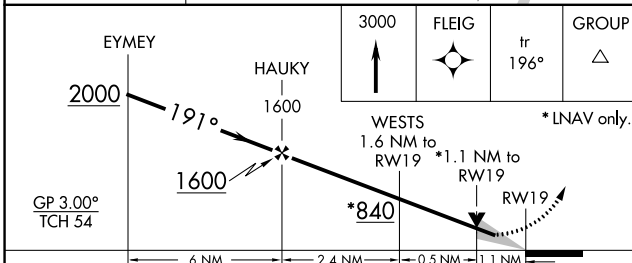
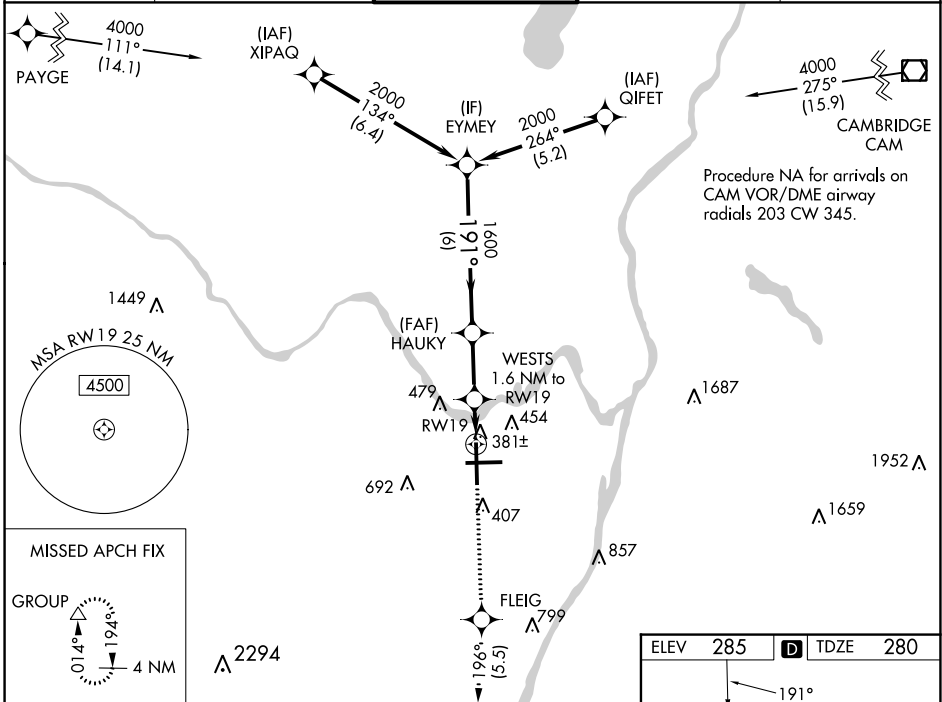
RNAV (GPS) Y RWY 19

ALBANY INTL (ALB)

⚠ For uncompensated Baro-VNAV systems, LNAV/VNAV NA below -5°C (23°F) or above 54°C (130°F). For inop ALS, increase LNAV/VNAV all Cats visibility to RVR 4500. Circling NA west of Rwy 1-19. Circling Rwy 10 NA at night. DME/DME RNP-0.3 NA.

MALSR MISSED APPROACH: Climb to 3000 direct FLEIG and on track 196° to GROUP and hold.

D-ATIS 120.45	ALBANY APP CON 132.825 307.2	ALBANY TOWER 119.5 257.8	GND CON 121.7 348.6	CLNC DEL 127.50
-------------------------	--	------------------------------------	-------------------------------	---------------------------



CATEGORY	A	B	C	D
LPV DA	480/18 200 (200-½)			
LNAV/VNAV DA	590/24 310 (400-½)			
LNAV MDA	680/24 400 (400-½)	680/35 400 (400-⅝)		
C CIRCLING	820-1 535 (600-1)	860-1½ 575 (600-½)	960-2¼ 675 (700-2¼)	

NE-2, 22 FEB 2024 to 21 MAR 2024

NE-2, 22 FEB 2024 to 21 MAR 2024

VORTAC ALB 115.3 Chan 100	APP CRS 275°	Rwy Idg TDZE Apt Elev	6007 285 285
---	------------------------	-----------------------------	---

VOR RWY 28

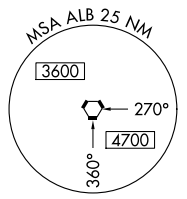
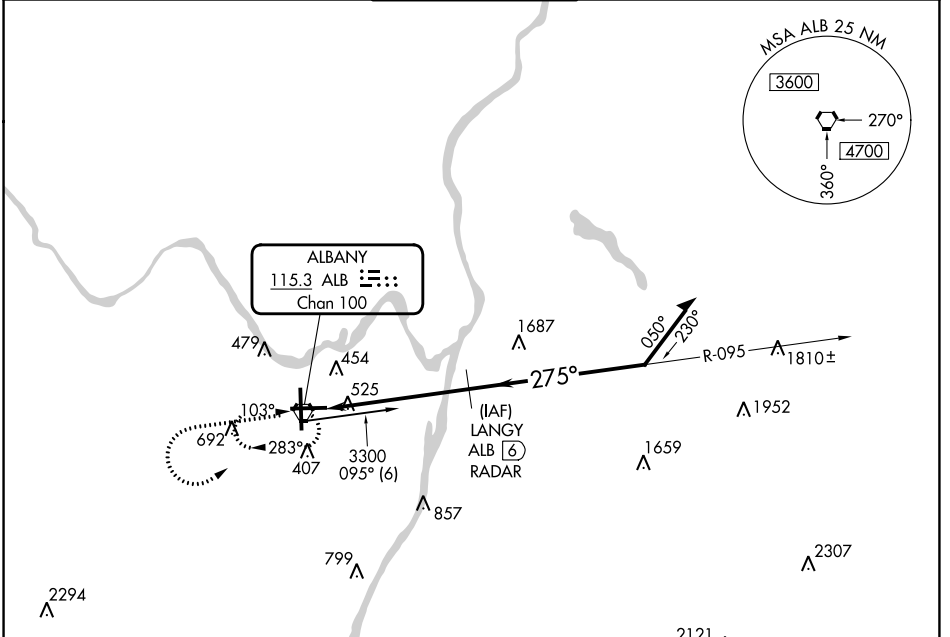
ALBANY INTL (ALB)

DME or RADAR required.

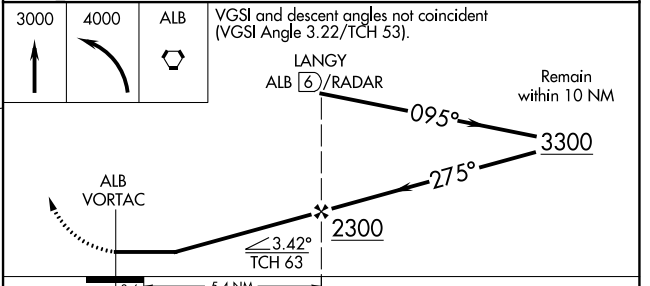
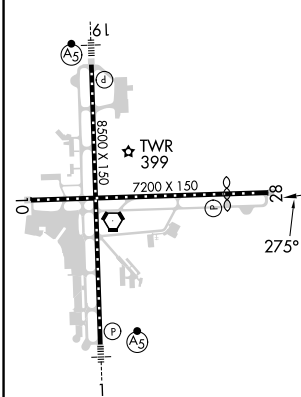
▼ Circling NA West of Rwy 1-19. Straight-in Rwy 28 NA at night, Circling Rwy 10, 28 NA at night. Rwy 28 helicopter visibility reduction below 1 SM NA.

MISSED APPROACH: Climb to 3000, then climbing left turn to 4000 direct ALB VORTAC and hold.

D-ATIS 120.45	ALBANY APP CON 132.825 307.2	ALBANY TOWER 119.5 257.8	GND CON 121.7 348.6	CLNC DEL 127.50
-------------------------	--	------------------------------------	-------------------------------	---------------------------



ELEV 285	D	TDZE 285
----------	----------	----------



CATEGORY	A	B	C	D
S-28	780-1 495 (500-1)		780-1¼ 495 (500-1¼)	780-1½ 495 (500-1½)
C CIRCLING	820-1 535 (600-1)		860-1½ 575 (600-1½)	960-2¼ 675 (700-2¼)

TDZ/CL Rwy 1
HIRL Rwy 1-19
MIRL Rwy 10-28
REIL Rws 10 and 28

NE-2, 22 FEB 2024 to 21 MAR 2024

NE-2, 22 FEB 2024 to 21 MAR 2024