

COULT SEVEN DEPARTURE
(COULT7.COULT) 29MARI8

(COULT7.COULT) 23334
COULT SEVEN DEPARTURE

ANOKA COUNTY/BLAINE (ANES FLD) (ANTE)
AL-5202 (FAA)
MINNEAPOLIS, MINNESOTA

MINNEAPOLIS DEP CON
126.5 335.65
ATIS
120.625
CLNC DEL
121.3
CLNC DEL
121.85 (when twr closed)
ANOKA TOWER★
132.4

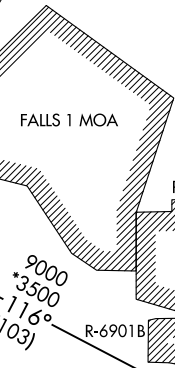
TAKEOFF MINIMUMS

Rwy 9: Standard with minimum climb of 205' per NM to 1200, or alternatively, with standard takeoff minimums and a normal 200' per NM climb gradient, takeoff must occur no later than 1200' prior to DER.
Rwy 18: 300-1 or standard with minimum climb of 370' per NM to 2600.
Rwys 27, 36: Standard.

GOPHER
117.3 GEP :---
Chan 120

FLYING CLOUD
117.7 FCM :---
Chan 124

EAU CLAIRE
113.65 EAU :--
Chan 83(Y)



DEPARTURE ROUTE DESCRIPTION

TAKEOFF ALL RUNWAYS: Fly assigned heading and altitude for RADAR vectors to intercept GEP R-119 to COULT INT/GEP 61 DME, thence

. . . . on transition or assigned route. Expect clearance to filed altitude/flight level 10 (ten) minutes after departure.

DELLS TRANSITION (COULT7.DLL): From over COULT INT on GEP R-119 to LMFRY INT, then on DLL R-296 to DLL VORTAC.

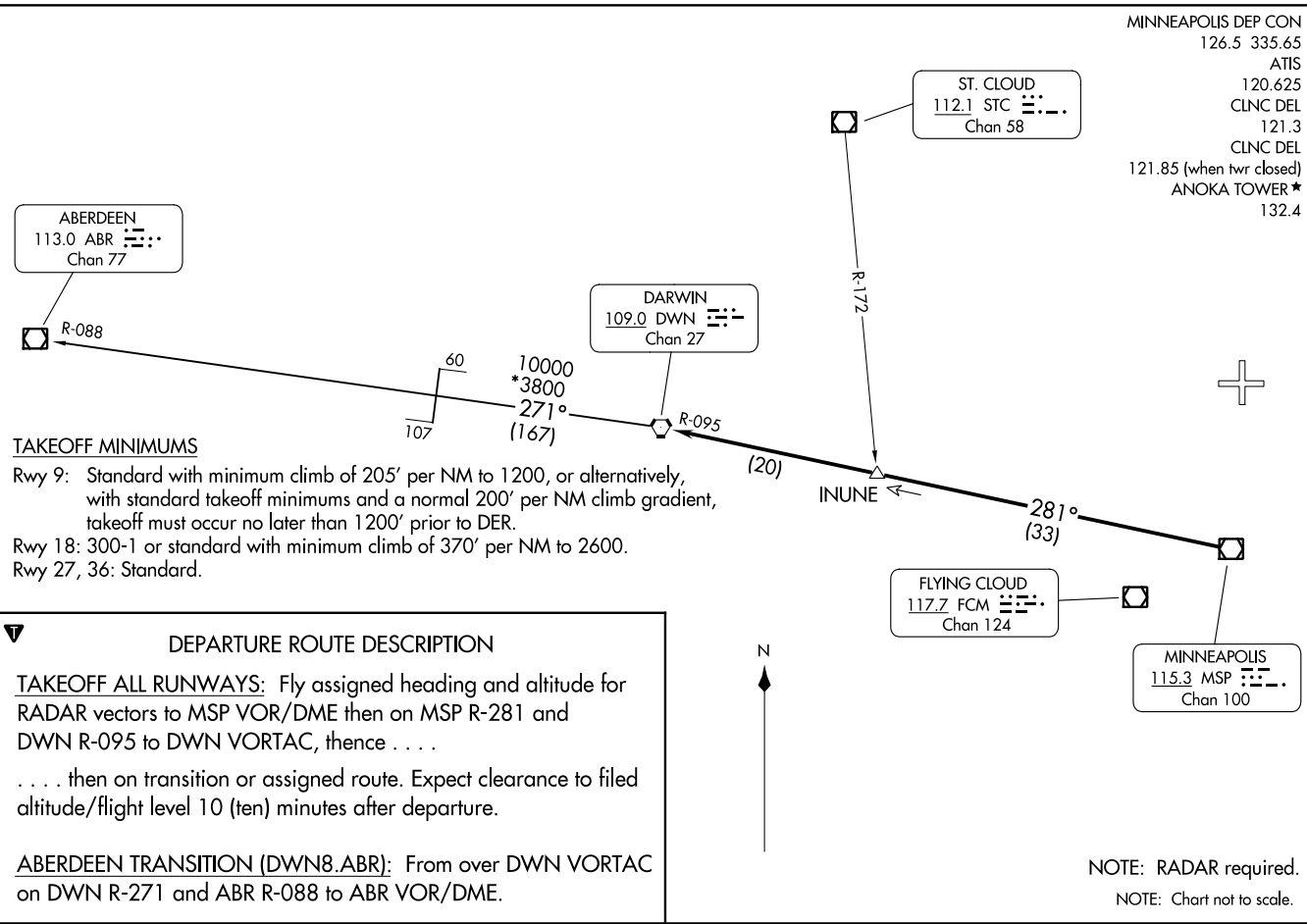
NOTE: RADAR required.

NOTE: Chart not to scale.

ANOKA COUNTY/BLAINE (ANES FLD) (ANTE)
MINNEAPOLIS, MINNESOTA

DARWIN EIGHT DEPARTURE
(DWN8.DWN) 05DECI 9

ANOKA COUNTY/BLAINE (JANES FLD) (ANTF)
MINNEAPOLIS, MINNESOTA



(DWN8.DWN) 23334
DARWIN EIGHT DEPARTURE

AL-5202 (FAA)

ANOKA COUNTY/BLAINE (JANES FLD) (ANTF)
MINNEAPOLIS, MINNESOTA

KBREW ONE DEPARTURE
(KBREW1.KBREW) 01FEB18

MINNEAPOLIS, MINNESOTA
ANOKA COUNTY/BLAINE (JANES FLD) (ANTE)

(KBREW1.KBREW) 23334
KBREW ONE DEPARTURE

ANOKA COUNTY/BLAINE (JANES FLD) (ANTE)
MINNEAPOLIS, MINNESOTA
AL-5202 (FAA)

**TOP ALTITUDE:
ASSIGNED BY ATC**

MINNEAPOLIS DEP CON
126.5 335.65
ATIS
120.625
CLNC DEL
121.3
CLNC DEL
121.85 (when twr closed)
ANOKA TOWER★
132.4

FARGO
116.2 FAR :--:--:
Chan 109



14000
+3300
296°
(120)

KBREW
14000

TAKEOFF MINIMUMS
 Rwy 9: Standard with minimum climb of 341' per NM to 3000.
 Rwy 18: Standard with minimum climb of 371' per NM to 3000.
 Rwy 27: Standard with minimum climb of 260' per NM to 2800.
 Rwy 36: Standard with minimum climb of 259' per NM to 2800.

(55)

(21)

(34) (13)

293°
(21)

NOTE: RADAR required.
NOTE: Chart not to scale.

GOPHER
117.3 GEP :--:--:
Chan 120

DEPARTURE ROUTE DESCRIPTON

TAKEOFF ALL RUNWAYS: Fly assigned heading and altitude for RADAR vectors to GEP VORTAC then on GEP R-293 to KBREW INT/GEP 55 DME, thence. . . .

. . . .on transition or assigned route. Expect clearance to filed altitude/flight level 10 (ten) minutes after departure.

FARGO TRANSITION (KBREW1.FAR): From over KBREW on FAR R-116 to FAR VOR/DME.

DARWIN
109.0 DWN :--:--:
Chan 27

FLYING CLOUD
117.7 FCM :--:--:
Chan 124

(ORSKY3.ORSKY) 23334
ORSKY THREE DEPARTURE

ANOKA COUNTY/BLAINE (JANES FLD) (ANE)
 AL-5202 (FAA) MINNEAPOLIS, MINNESOTA

MINNEAPOLIS DEP CON
 126.5 335.65
 ATIS
 120.625
 CLNC DEL
 121.3
 CLNC DEL
 121.85 (when twr closed)
 ANOKA TOWER ★
 132.4

**TOP ALTITUDE:
 ASSIGNED BY ATC**



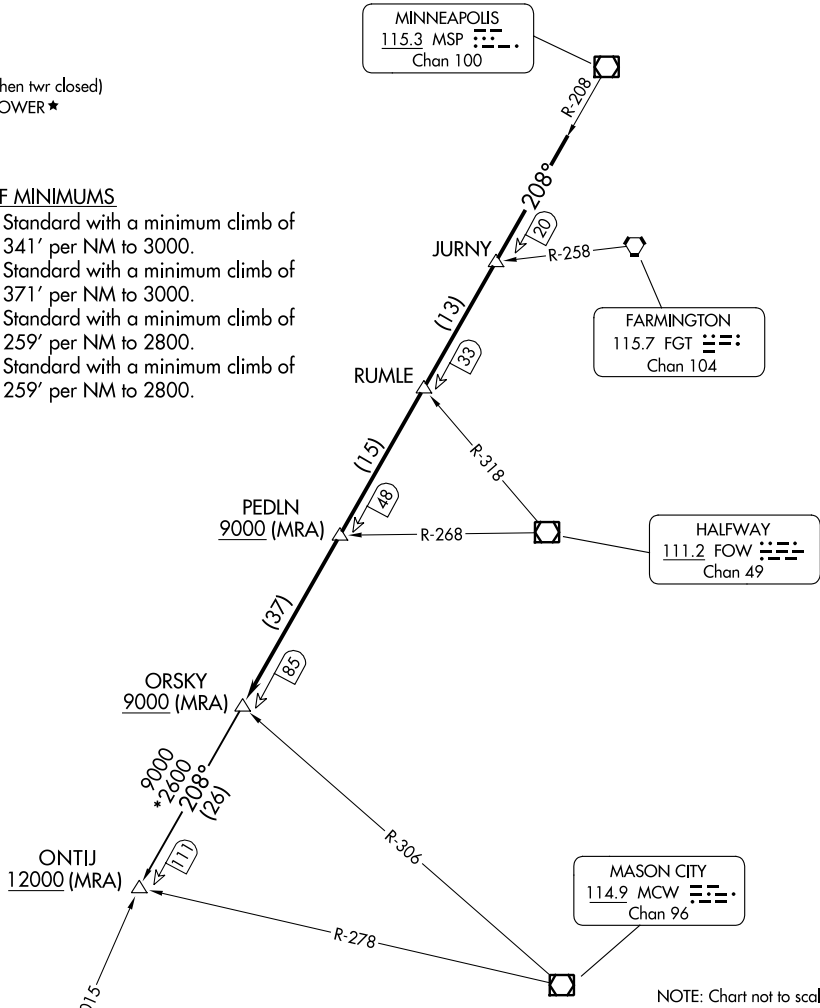
RADAR required.

TAKEOFF MINIMUMS

- Rwy 9: Standard with a minimum climb of 341' per NM to 3000.
- Rwy 18: Standard with a minimum climb of 371' per NM to 3000.
- Rwy 27: Standard with a minimum climb of 259' per NM to 2800.
- Rwy 36: Standard with a minimum climb of 259' per NM to 2800.

NC-1, 22 FEB 2024 to 21 MAR 2024

NC-1, 22 FEB 2024 to 21 MAR 2024



DEPARTURE ROUTE DESCRIPTOR

TAKEOFF ALL RUNWAYS: Climb on assigned heading for RADAR vectors to assigned fix on MSP R-208, then on depicted route to ORSKY, then on transition. Maintain ATC assigned altitude. Expect filed altitude 10 minutes after departure.

ONTIJ TRANSITION (ORSKY3.ONTIJ): From over ORSKY INT on MSP R-208 to ONTIJ INT.

(ORSKY3.ORSKY) 08SEP22
ORSKY THREE DEPARTURE

MINNEAPOLIS, MINNESOTA
 ANOKA COUNTY/BLAINE (JANES FLD) (ANE)

(RST1.RST) 23334

ROCHESTER ONE DEPARTURE

ANOKA COUNTY/BLAINE (JANES FLD) (A.N.E)

AL-5202 (FAA)

MINNEAPOLIS, MINNESOTA

MINNEAPOLIS DEP CON
 126.5 335.65
 ATIS
 120.625
 CLNC DEL
 121.3
 CLNC DEL
 121.85 (when twr closed)
 ANOKA TOWER*
 132.4



TOP ALTITUDE:
(JETS) 7000/
(PROPS) 5000

TAKEOFF MINIMUMS

Rwy 9: Standard with minimum climb of 341' per NM to 3000.
 Rwy 18: Standard with minimum climb of 371' per NM to 3000.
 Rwy 27: Standard with minimum climb of 260' per NM to 2800.
 Rwy 36: Standard with minimum climb of 259' per NM to 2800.

FLYING CLOUD
 117.7 FCM

 Chan 124

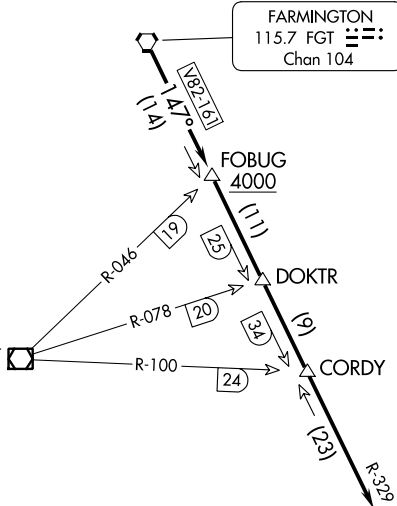
FARMINGTON
 115.7 FGT

 Chan 104

NOTE: RADAR required.

HALFWAY
 111.2 FOW

 Chan 49



ROCHESTER
 112.0 RST

 Chan 57

WATERLOO
 112.2 ALO

 Chan 59

DEPARTURE ROUTE DESCRIPTION

TAKEOFF ALL RUNWAYS: Fly assigned heading and altitude for RADAR vectors to FGT VORTAC then on FGT R-147 and RST R-329 to RST VOR/DME. Cross FOBUG INT/FGT 14 DME at or above 4000, thence

. . . .on assigned transition or assigned route. Expect clearance to filed altitude/flight level 10 (ten) minutes after departure.

WATERLOO TRANSITION (RST1.ALO): From over RST VOR/DME on RST R-168 and ALO R-353 to ALO VOR/DME.

NOTE: Chart not to scale.

NC-1, 22 FEB 2024 to 21 MAR 2024

NC-1, 22 FEB 2024 to 21 MAR 2024

ROCHESTER ONE DEPARTURE

(RST1.RST) 13SEP18

MINNEAPOLIS, MINNESOTA

ANOKA COUNTY/BLAINE (JANES FLD) (A.N.E)

SCHEP ONE DEPARTURE
(SCHEP1, SCHEP) 08SEP22

MINNEAPOLIS, MINNESOTA
ANOKA COUNTY/BLAINE (IANES FLD) (ANTE)

MINNEAPOLIS DEP CON
126.5 335.65
ATIS
120.625
CLNC DEL
121.3
CLNC DEL
121.85 (when twr closed)

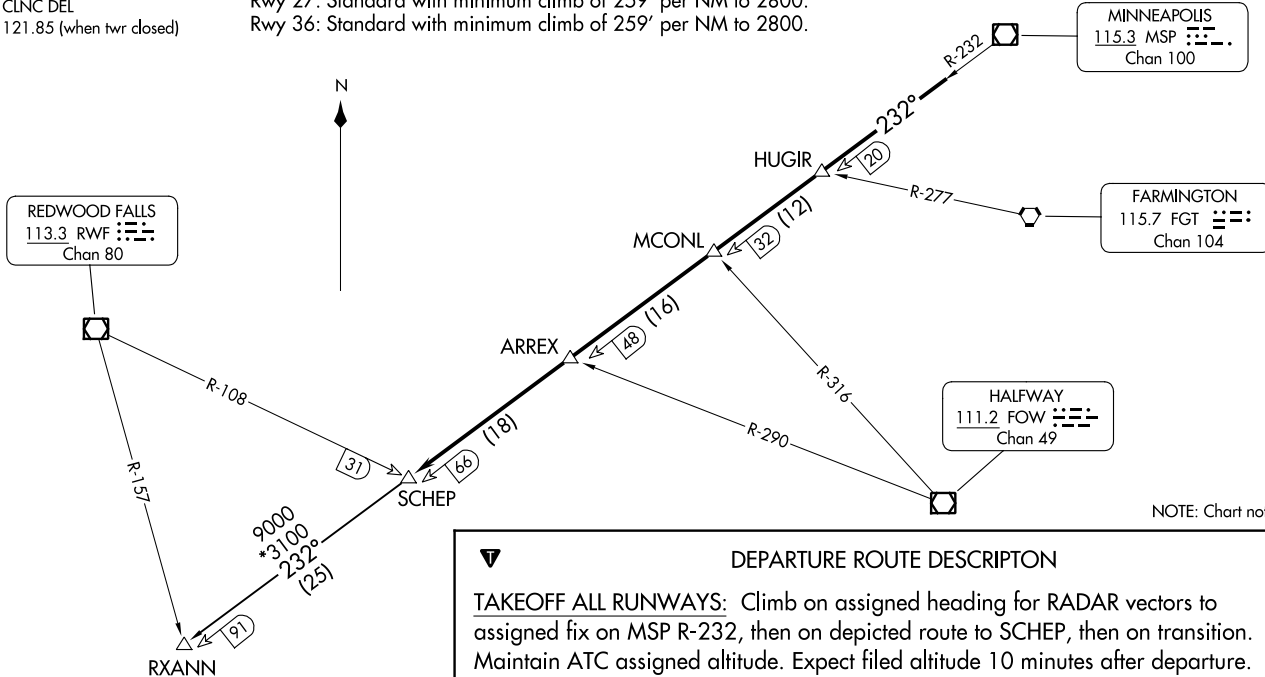
TAKEOFF MINIMUMS

Rwy 9: Standard with minimum climb of 341' per NM to 3000.
Rwy 18: Standard with minimum climb of 370' per NM to 3000.
Rwy 27: Standard with minimum climb of 259' per NM to 2800.
Rwy 36: Standard with minimum climb of 259' per NM to 2800.

RADAR required.



**TOP ALTITUDE:
ASSIGNED BY ATC**



NOTE: Chart not to scale.

DEPARTURE ROUTE DESCRIPTOR

TAKEOFF ALL RUNWAYS: Climb on assigned heading for RADAR vectors to assigned fix on MSP R-232, then on depicted route to SCHEP, then on transition. Maintain ATC assigned altitude. Expect filed altitude 10 minutes after departure.

RXANN TRANSITION (SCHEP1.RXANN): From over SCHEP INT on MSP R-232 to RXANN INT.

(SCHEP1, SCHEP) 23334
SCHEP ONE DEPARTURE

ANOKA COUNTY/BLAINE (IANES FLD) (ANTE)
MINNEAPOLIS, MINNESOTA
AL-5202 (FAA)

WLSTN SEVEN DEPARTURE
(WLSTN7.WLSTN) 17AUG17

MINNEAPOLIS, MINNESOTA
ANOKA COUNTY/BLAINE (JANES FLD) (ANIE)

TAKEOFF MINIMUMS

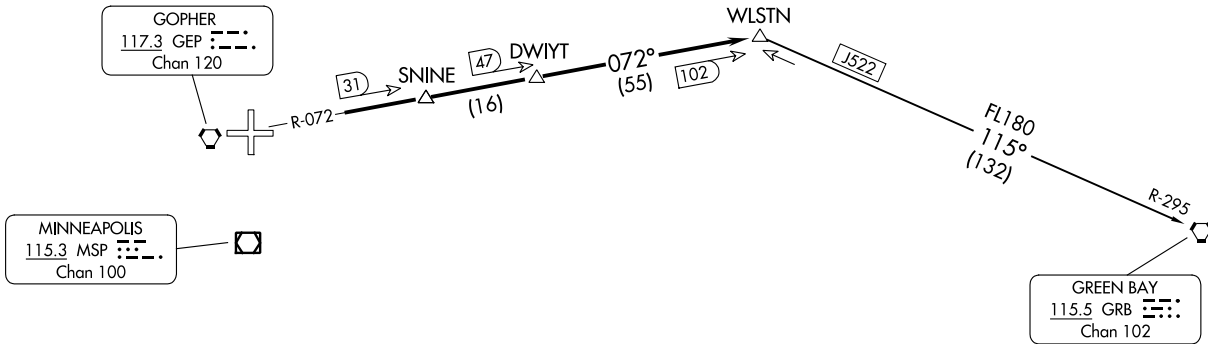
Rwy 9: Standard with minimum climb of 341' per NM to 3000.
Rwy 18: Standard with minimum climb of 371' per NM to 3000.
Rwy 27: Standard with minimum climb of 259' per NM to 2800.
Rwy 36: Standard with minimum climb of 259' per NM to 2800.

**TOP ALTITUDE:
(JETS) 7000/
(PROPS) 5000**

MINNEAPOLIS DEP CON
126.5 335.65
ATIS
120.625
CLNC DEL
121.3
CLNC DEL
121.85 (when twr closed)
ANOKA TOWER ★
132.4

(WLSTN7.WLSTN) 23334
WLSTN SEVEN DEPARTURE

ANOKA COUNTY/BLAINE (JANES FLD) (ANIE)
AL-5202 (FAA)
MINNEAPOLIS, MINNESOTA



DEPARTURE ROUTE DESCRIPTION

TAKEOFF ALL RUNWAYS: Fly assigned heading and altitude for RADAR vectors to GEP R-072 to WLSTN/GEP 102 DME. Thence

. . . .on assigned transition or assigned route. Expect clearance to filed altitude/flight level 10 (ten) minutes after departure.

GREEN BAY TRANSITION (WLSTN7.GRB): From over WLSTN on GRB R-295 to GRB VORTAC.

NOTE: RADAR required.
NOTE: Chart not to scale.

**TOP ALTITUDE:
(JETS) 7000/
(PROPS) 5000**

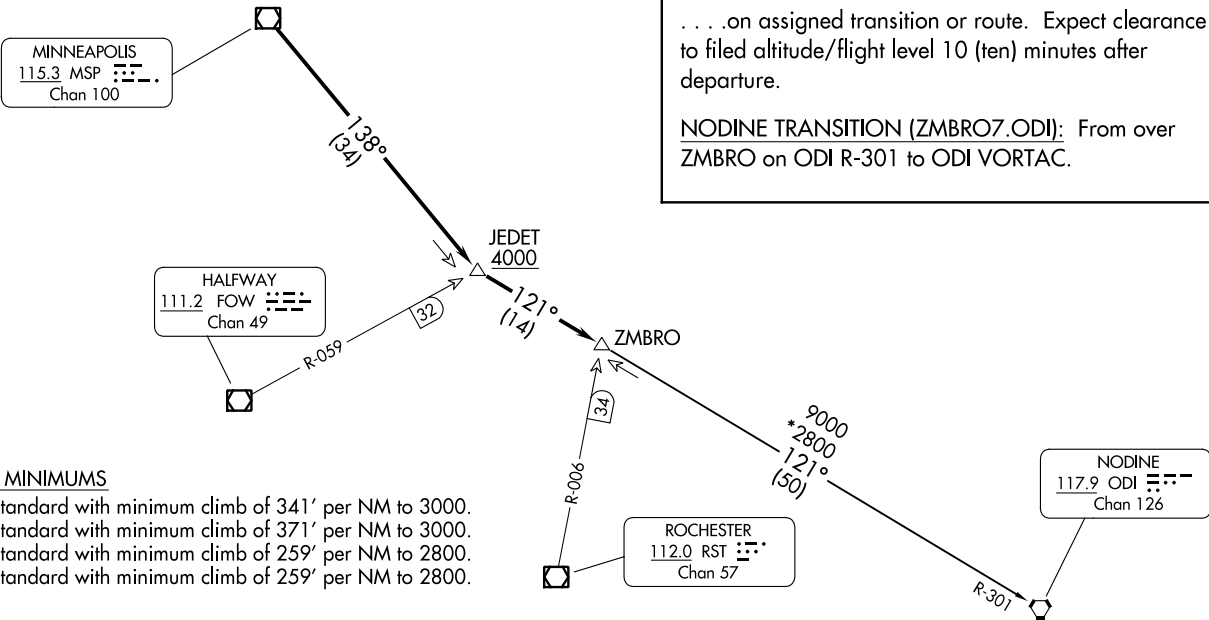
DEPARTURE ROUTE DESCRIPTION

TAKEOFF ALL RUNWAYS: Fly assigned heading and altitude for RADAR vectors to MSP VOR/DME then on MSP R-138 to cross JEDET INT/MSP 34 DME, at or above 4000; then on ODI R-301 to ZMBRO INT/ODI 50 DME, thence

. . . .on assigned transition or route. Expect clearance to filed altitude/flight level 10 (ten) minutes after departure.

NODINE TRANSITION (ZMBRO7.ODI): From over ZMBRO on ODI R-301 to ODI VORTAC.

MINNEAPOLIS DEP CON
126.5 335.65
ATIS
120.625
CLNC DEL
121.3
CLNC DEL
121.85 (when twr closed)
ANOKA TOWER*
132.4



TAKEOFF MINIMUMS

- Rwy 9: Standard with minimum climb of 341' per NM to 3000.
- Rwy 18: Standard with minimum climb of 371' per NM to 3000.
- Rwy 27: Standard with minimum climb of 259' per NM to 2800.
- Rwy 36: Standard with minimum climb of 259' per NM to 2800.

NOTE: RADAR required.

NOTE: Chart not to scale.

ZMBRO SEVEN DEPARTURE
(ZMBRO7.ZMBRO) 17AUG17

MINNEAPOLIS, MINNESOTA
ANOKA COUNTY/BLAINE (JANES FLD) (ANIE)

ZMBRO SEVEN DEPARTURE
(ZMBRO7.ZMBRO) 23334

ANOKA COUNTY/BLAINE (JANES FLD) (ANIE)
MINNEAPOLIS, MINNESOTA
AL-5202 (FAA)