

APP CRS	Rwy Idg	4000
232°	TDZE	995
	Apt Elev	995

RNAV (GPS) RWY 23

TRI-STATE STEUBEN COUNTY (A.N.Q.)

RNP APCH.

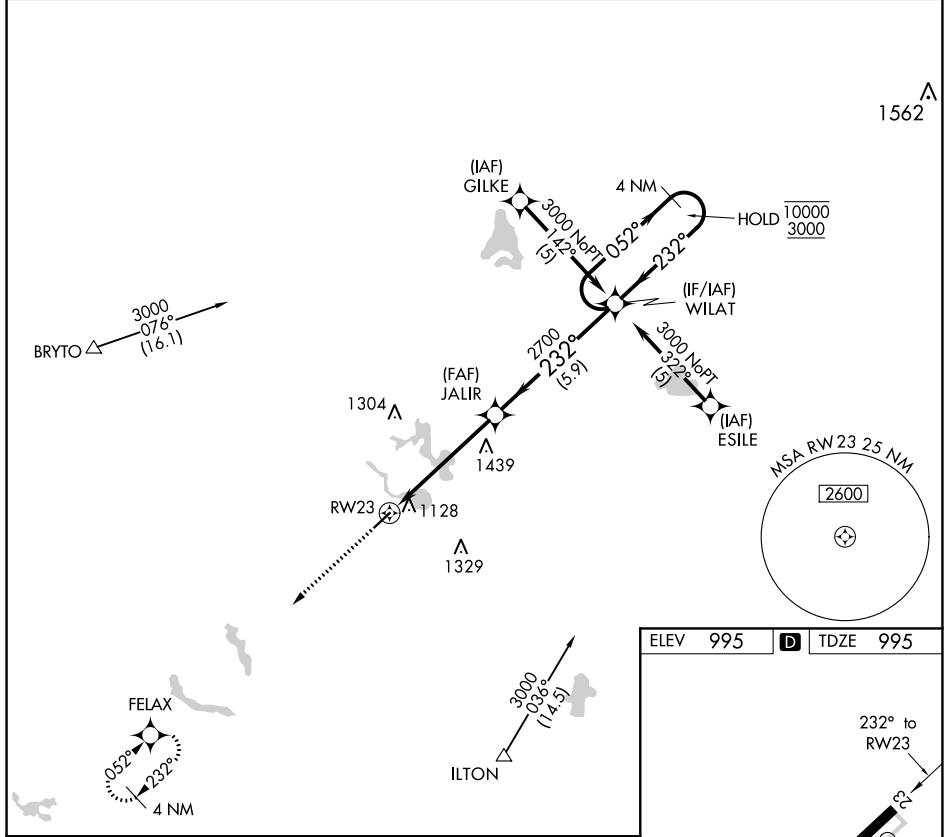
▼ Rwy 23 helicopter visibility reduction below 1 SM NA.
Procedure NA at night.

MISSED APPROACH: Climb to 3000
direct FELAX and hold.

AWOS-3
118.175

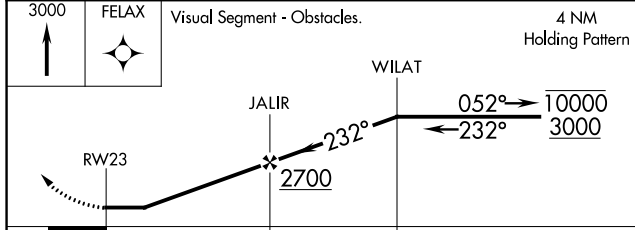
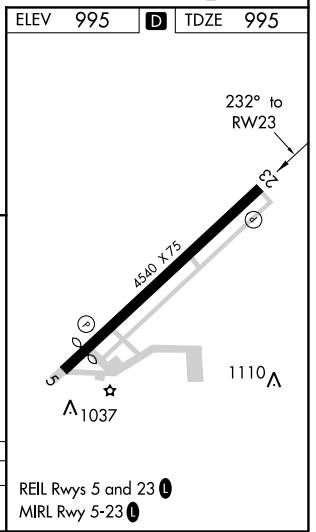
FORT WAYNE APP CON
127.2 284.6 (SW/NW)
132.15 284.6 (SE/NE)

UNICOM
123.075 (CTAF) **①**



EC-2, 08 SEP 2022 to 06 OCT 2022

EC-2, 08 SEP 2022 to 06 OCT 2022



CATEGORY	A	B	C	D
LNAV MDA	1700-1	705 (800-1)	1700-2 705 (800-2)	NA

REIL Rwys 5 and 23 **①**
MIRL Rwy 5-23 **①**

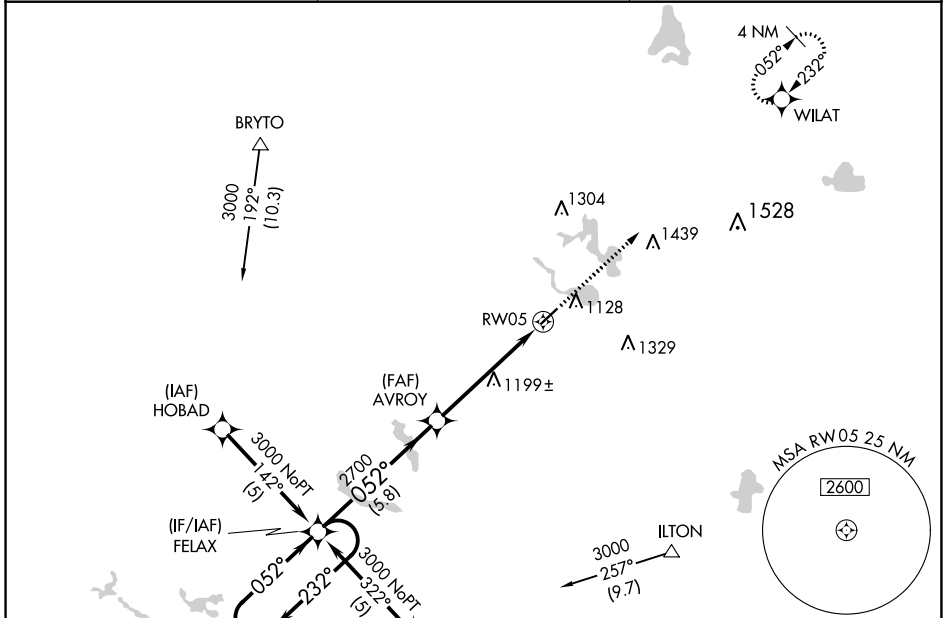
APP CRS	Rwy Idg	4000
052°	TDZE	990
	Apt Elev	995

RNAV (GPS) RWY 5

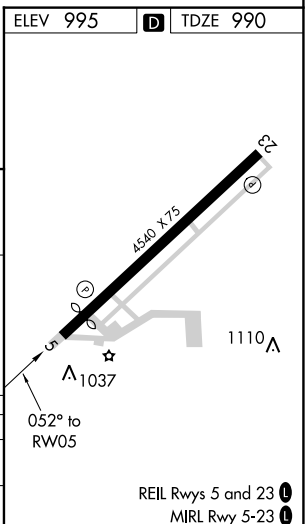
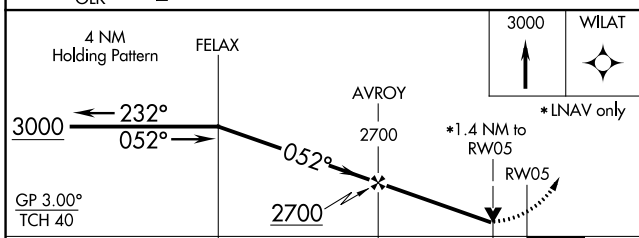
TRI-STATE STEUBEN COUNTY (ANQ)

RNP APCH.	<p>▼ For uncompensated Baro-VNAV systems, LNAV/VNAV NA below -16°C or above 54°C.</p> <p>▲ NA Rwy 5 helicopter visibility reduction below 3/4 SM NA.</p>	<p>MISSED APPROACH: Climb to 3000 direct WILAT and hold.</p>
-----------	--	--

<p>AWOS-3 118.175</p>	<p>FORT WAYNE APP CON 127.2 284.6 (SW/NW) 132.15 284.6 (SE/NE)</p>	<p>UNICOM 123.075 (CTAF) 1</p>
----------------------------------	--	--



ELEV 995	D TDZE 990
----------	-------------------



CATEGORY	A	B	C	D
LNAV/VNAV DA	1474-1 ³ / ₄	484 (500-1 ³ / ₄)		NA
LNAV MDA	1460-1	470 (500-1)	1460-1 ¹ / ₂ 470 (500-1 ¹ / ₂)	NA

EC-2, 08 SEP 2022 to 06 OCT 2022

EC-2, 08 SEP 2022 to 06 OCT 2022