

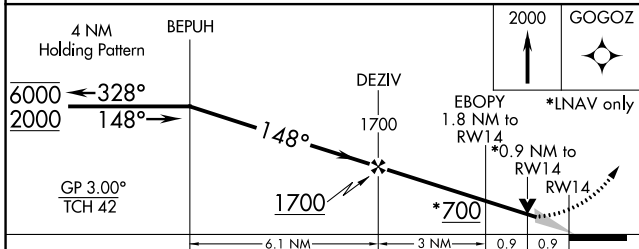
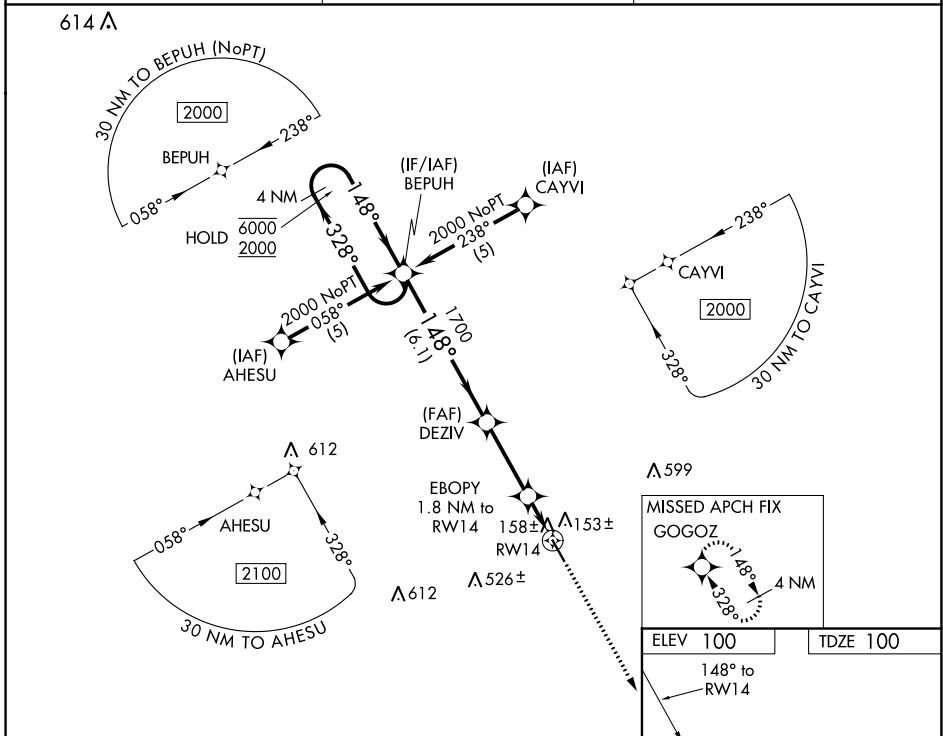
WAAS CH 77714 W14A	APP CRS 148°	Rwy Idg TDZE Apt Elev	5004 100 100
--	------------------------	-----------------------------	---

RNAV (GPS) RWY 14

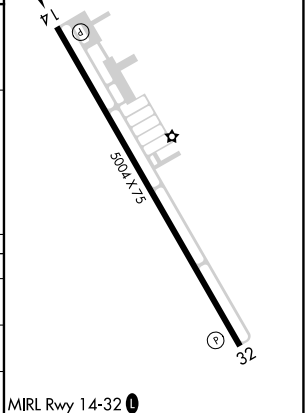
WHARTON RGNL (A.R.M)

RNP APCH. ▼ For uncompensated Baro-VNAV systems, LNAV/VNAV NA below -15°C or above 54°C.	MISSED APPROACH: Climb to 2000 direct GOGOZ and hold.
---	---

AWOS-3 118.475	HOUSTON CENTER 128.6 360.8	UNICOM 122.7 (CTAF)
--------------------------	--------------------------------------	-------------------------------



CATEGORY	A	B	C	D
LPV DA	396-1	296 (300-1)		NA
LNAV/VNAV DA	428-1¼	328 (400-1¼)		NA
LNAV MDA	420-1	320 (400-1)		NA



SC-5, 22 APR 2021 to 20 MAY 2021

SC-5, 22 APR 2021 to 20 MAY 2021

WAAS CH 58114 W32A	APP CRS 328°	Rwy Idg TDZE Apt Elev	5004 99 100
--	------------------------	-----------------------------	--

RNAV (GPS) RWY 32

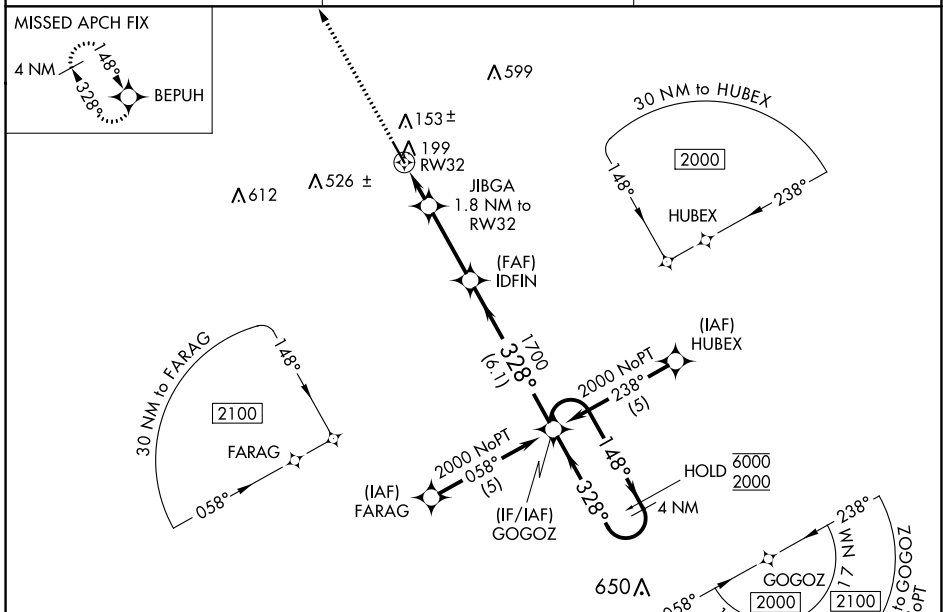
WHARTON RGNL (A.R.M)

RNP APCH.

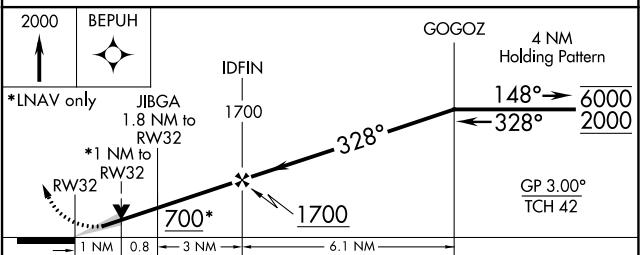
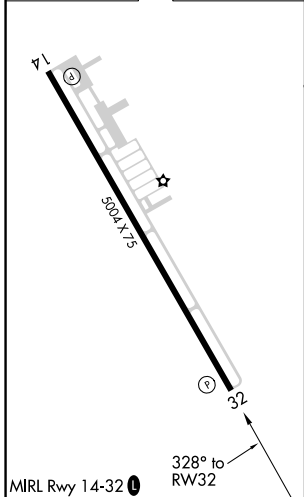
▼ For uncompensated Baro-VNAV systems, LNAV/VNAV NA below -15°C or above 54°C.

MISSED APPROACH: Climb to 2000 direct BEPUH and hold.

AWOS-3 118.475	HOUSTON CENTER 128.6 360.8	UNICOM 122.7 (CTAF) ①
--------------------------	--------------------------------------	---------------------------------



ELEV 100	TDZE 99
----------	---------



CATEGORY	A	B	C	D
LPV DA		349-1 250 (300-1)		NA
LNAV/VNAV DA		399-1 300 (300-1)		NA
LNAV MDA		460-1 361 (400-1)		NA

SC-5, 22 APR 2021 to 20 MAY 2021

SC-5, 22 APR 2021 to 20 MAY 2021

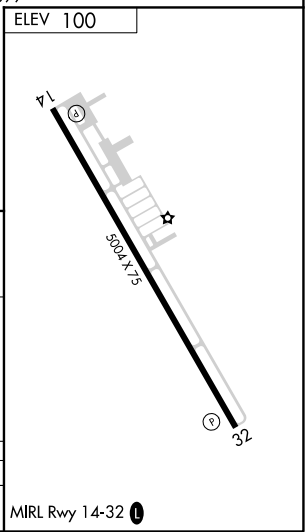
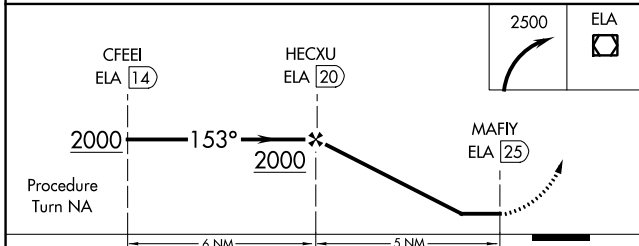
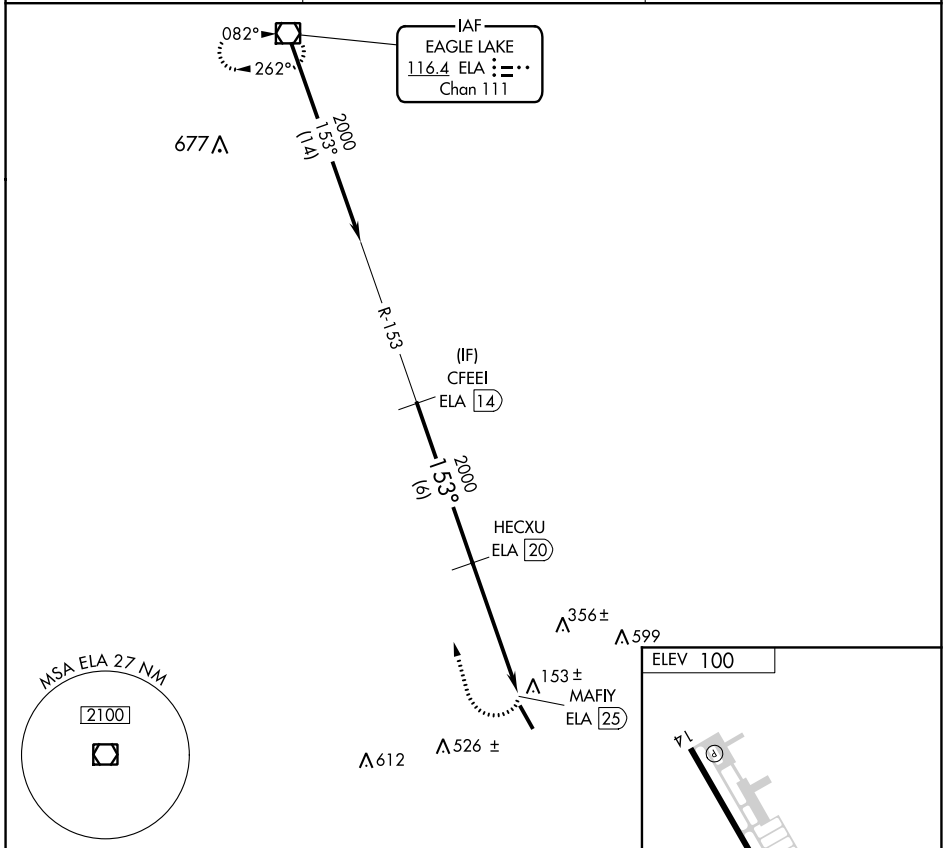
VOR/DME ELA 116.4 Chan 111	APP CRS 153°	Rwy Idg TDZE Apt Elev	N/A N/A 100
---	------------------------	-----------------------------	--

VOR/DME-A
WHARTON RGNL (A.R.M)

⚠ When local altimeter setting not received, use Victoria altimeter setting and increase all MDA 120 feet, increase Circling Cat C visibility ¼ mile.

⚠ MISSED APPROACH: Climbing right turn to 2500 direct ELA VOR/DME and hold.

AWOS-3 118.475	HOUSTON CENTER 128.6 360.8	UNICOM 122.7 (CTAF) ①
--------------------------	--------------------------------------	--



CATEGORY	A	B	C	D
CIRCLING	640-1 540 (600-1)	640-1¼ 540 (600-1¼)	640-1½ 540 (600-1½)	NA

SC-5, 22 APR 2021 to 20 MAY 2021

SC-5, 22 APR 2021 to 20 MAY 2021