

LOC I-AUG <b>108.7</b>	APP CRS <b>171°</b>	Rwy Idg <b>5002</b>	TDZE <b>348</b>
		Apt Elev <b>352</b>	

# ILS or LOC RWY 17

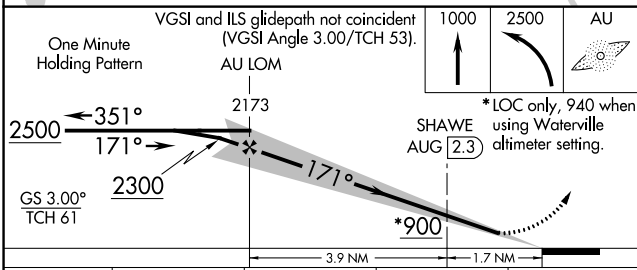
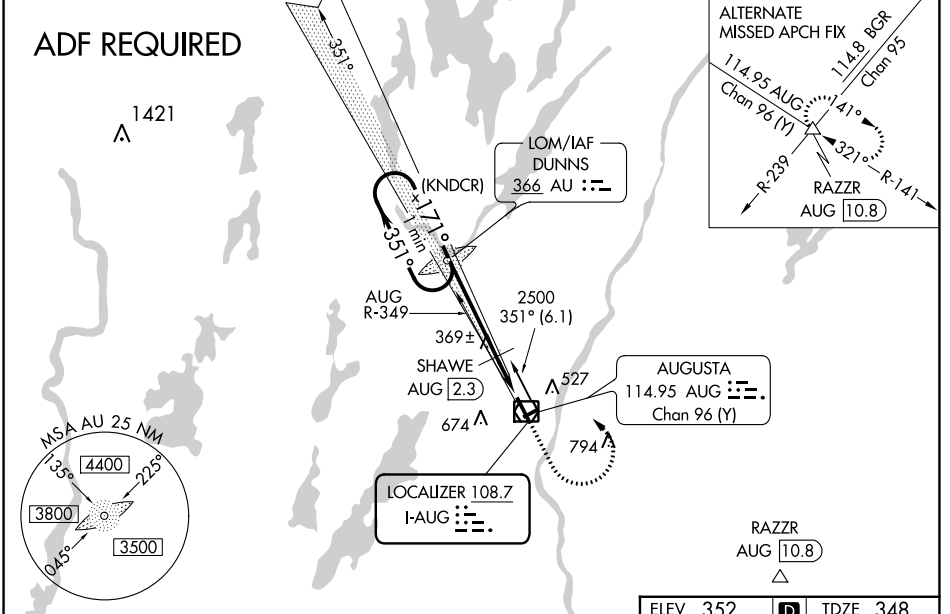
AUGUSTA STATE (AUG)

**ADF REQUIRED.** Localizer unusable from 0.5 NM to threshold above 1500 feet. When local altimeter setting not received, use Waterville altimeter setting; increase S-ILS 17 DA to 583; increase all MDAs 40 feet and visibility S-LOC 17 Cat C and D 1/8 SM, and Circling Cat D 1/4 SM; SHAWE fix minimums increase S-LOC 17 Cat C and D visibility 1/8 SM, and Circling Cat D visibility 1/4 SM. Glideslope unusable below 430 feet. When Circling to Rwy 8, 26 at night operational VGSI required remain on or above VGSI glidepath until threshold. % DME from AUG VOR/DME.

**MALSR**

**MISSED APPROACH:**  
Climb to 1000 then climbing left turn to 2500 direct DUNNS LOM and hold.

ASOS <b>118.325</b>	PORTLAND APP CON ★ <b>128.35 299.2</b>	CLNC DEL <b>119.95 299.2</b>	UNICOM <b>123.0 (CTAF) 0</b>
------------------------	---	---------------------------------	---------------------------------



ELEV 352	D	TDZE 348
----------	---	----------

171°

5002 x 100

2613 x 75

35

8

35

HIRL Rwy 17-35  $\bullet$

MIRL Rwy 8-26  $\bullet$

REIL Rwy 35  $\bullet$

FAF to MAP 5.6 NM					
Knots	60	90	120	150	180
Min:Sec	5:36	3:44	2:48	2:14	1:52

CATEGORY	A	B	C	D
S-ILS 17		548-1/2	200 (200-1/2)	
S-LOC 17	900-1/2	552 (600-1/2)	900-1 1/4	552 (600-1 1/4)
<b>C</b> CIRCLING	940-1 588 (600-1)	980-1 628 (700-1)	980-1 3/4 628 (700-1 3/4)	1160-2 1/2 808 (900-2 1/2)
SHAWE FIX MINIMUMS %				
S-LOC 17		620-1/2	272 (300-1/2)	
<b>C</b> CIRCLING	940-1 588 (600-1)	980-1 628 (700-1)	980-1 3/4 628 (700-1 3/4)	1160-2 1/2 808 (900-2 1/2)

NE-1, 22 FEB 2024 to 21 MAR 2024

NE-1, 22 FEB 2024 to 21 MAR 2024

WAAS CH <b>70720</b> <b>W17A</b>	APP CRS <b>171°</b>	Rwy Idg <b>5002</b> TDZE <b>348</b> Apt Elev <b>352</b>
--	------------------------	---

# RNAV (GPS) RWY 17

AUGUSTA STATE (AUG)

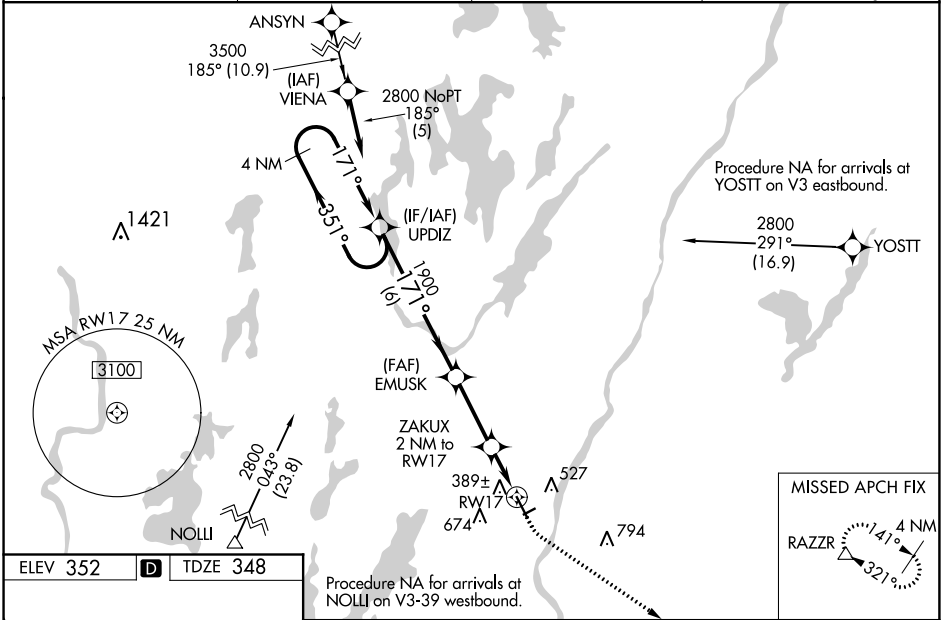
**⚠** DME/DME RNP-0.3 NA. For inop MALSR, increase LNAV/VNAV all Cats visibility to 1 mile. For inop MALSR when using Waterville altimeter setting, increase LNAV/VNAV all Cats visibility to 1½ mile. VDP and Baro-VNAV NA with Waterville altimeter setting. When local altimeter setting not received, use Waterville altimeter setting; increase LPV DA to 583 feet, LNAV/VNAV DA to 710 feet, and visibility LNAV/VNAV all Cats ½ SM; increase all MDA 40 feet and visibility LNAV Cats C and D ½ SM, and Circling Cat D ¼ SM. For uncompensated Baro-VNAV systems, LNAV/VNAV NA below -30°C (-22°F) or above 41°C (105°F). Rwy 8, 26 helicopter visibility below 1 SM NA. Circling Rwy 8 and 26 NA at night. When VGSI inop, Circling Rwy 35 NA at night.

MALSR

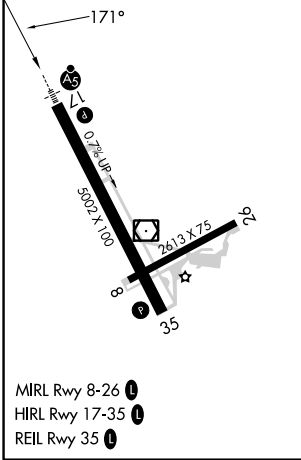


**MISSED APPROACH:**  
Climb to 800 then climbing left turn to 3000 direct RAZZR and hold.

ASOS <b>118.325</b>	PORTLAND APP CON * <b>128.35 299.2</b>	CLNC DEL <b>119.95 299.2</b>	UNICOM <b>123.0 (CTAF) 0</b>
------------------------	---	---------------------------------	---------------------------------



ELEV 352	<b>D</b>	TDZE 348
----------	----------	----------



4 NM Holding Pattern	VGSI and RNAV glidepath not coincident (VGSI Angle 3.00/TCH 53)	800	3000	RAZZR
2800	EMUSK 1900	ZAKUX 2 NM to RW17	*1000	*LNAV only.
GP 3.00° TCH 60	6 NM	2.8 NM	1.1 NM	0.9

CATEGORY	A	B	C	D
LPV DA		548-½	200 (200-½)	
LNAV/VNAV DA		675-⅝	327 (400-⅝)	
LNAV MDA		640-½	292 (300-½)	
<b>C</b> CIRCLING	960-1 608 (700-1)	980-1 628 (700-1)	980-¾ 628 (700-¾)	1160-2½ 808 (900-2½)

NE-1, 22 FEB 2024 to 21 MAR 2024

NE-1, 22 FEB 2024 to 21 MAR 2024

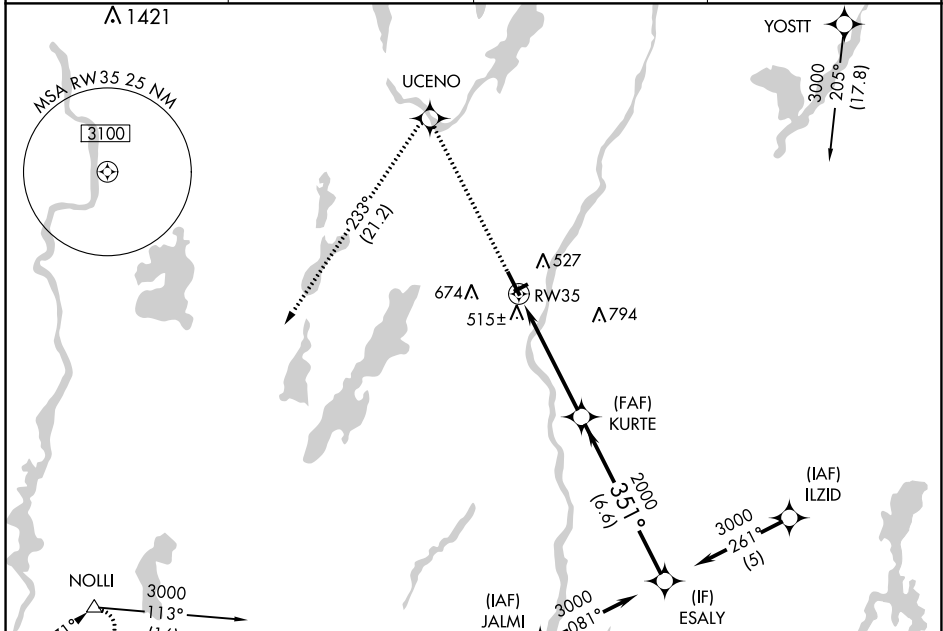
WAAS CH <b>70406</b> <b>W35A</b>	APP CRS <b>351°</b>	Rwy Idg TDZE Apt Elev	<b>5002</b> <b>350</b> <b>352</b>
--	------------------------	-----------------------------	---

# RNAV (GPS) RWY 35

AUGUSTA STATE (AUG)

RNP APCH. ⚠ Circling to Rwy 26 NA at night. Rwy 35 helicopter visibility reduction below 3/4 SM NA. ⚠ For uncompensated Baro-VNAV systems, LNAV/VNAV NA below -15°C or above 54°C.	MISSED APPROACH: Climb to 3000 direct UCENO and left turn on track 233° to NOLLI and hold.
--	--

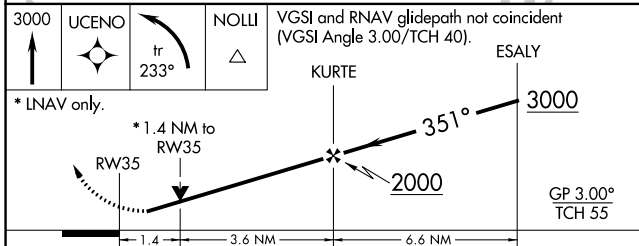
ASOS <b>118.325</b>	PORTLAND APP CON * <b>128.35 299.2</b>	CLNC DEL <b>119.95 299.2</b>	UNICOM <b>123.0 (CTAF) 0</b>
------------------------	---	---------------------------------	---------------------------------



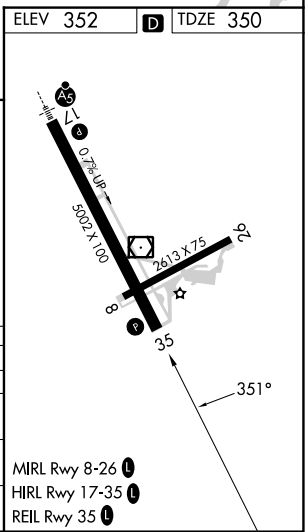
NE-1, 22 FEB 2024 to 21 MAR 2024

NE-1, 22 FEB 2024 to 21 MAR 2024

ELEV 352	<b>D</b> TDZE 350
----------	-------------------



CATEGORY	A	B	C	D
LPV DA	610-1 260 (300-1)			
LNAV/VNAV DA	850-1 3/4 500 (500-1 3/4)			
LNAV MDA	840-1 490 (500-1)	840-1 3/4 490 (500-1 3/4)	840-1 1/2 490 (500-1 1/2)	
CIRCLING	880-1 3/4 528 (600-1 3/4)	980-1 3/4 628 (700-1 3/4)	1160-2 1/2 808 (900-2 1/2)	



- MIRL Rwy 8-26 0
- HIRL Rwy 17-35 0
- REIL Rwy 35 0

VOR/DME AUG <b>114.95</b> Chan <b>96(Y)</b>	APP CRS <b>354°</b>	Rwy Idg TDZE <b>350</b> Apt Elev <b>352</b>	<b>5002</b>
---	------------------------	---	-------------

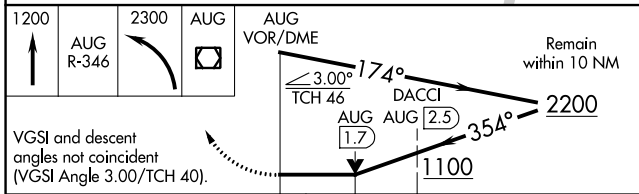
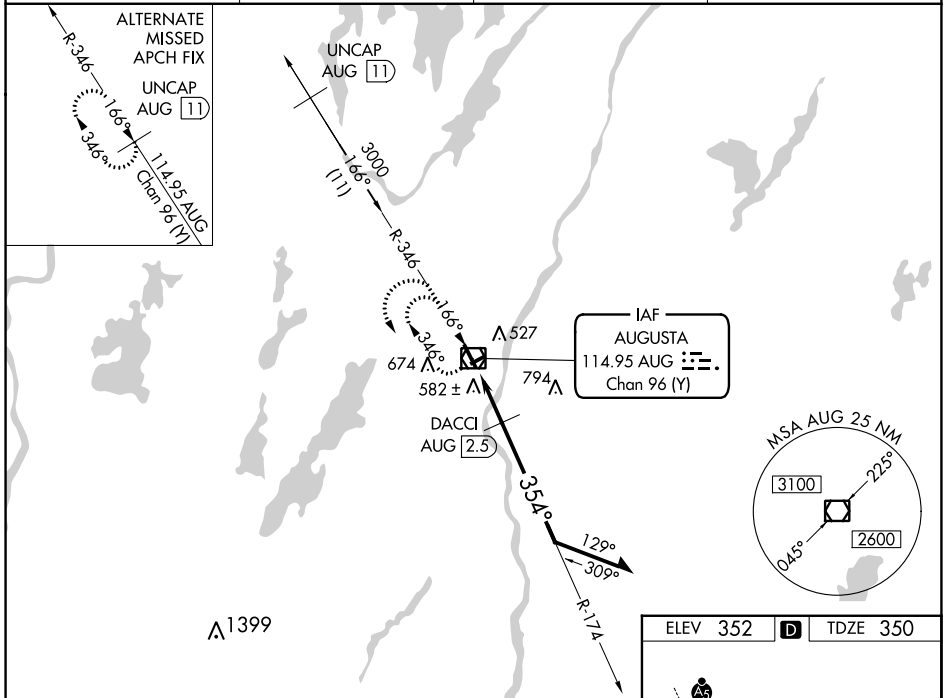
# VOR RWY 35

AUGUSTA STATE (AUG)

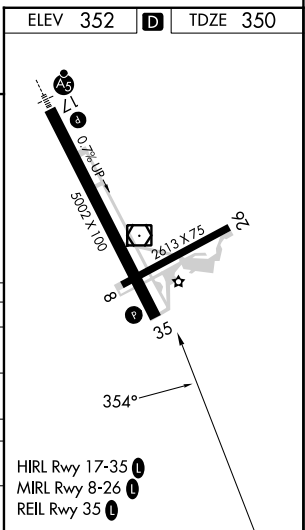
**⚠** Rwy 35 helicopter visibility reduction below 3/4 SM NA. When local altimeter setting not received, use Waterville altimeter setting: increase all MDA 40 feet and visibility S-35 Cats C and D 1/2 SM, and Circling Cat D 1/4 SM; DACCI fix minimums increase visibility S-35 Cats C and D 1/2 SM, and Circling Cat D 1/4 SM. Rwy 8, 26 helicopter visibility reduction below 1 SM NA. Circling Rwy 8, 26 NA at night.

**MISSED APPROACH:** Climb to 1200 on AUG VOR/DME R-346, then climbing left turn to 2300 direct AUG VOR/DME and hold.

ASOS <b>118.325</b>	PORTLAND APP CON * <b>128.35 299.2</b>	CLNC DEL <b>119.95 299.2</b>	UNICOM <b>123.0 (CTAF) 0</b>
------------------------	---	---------------------------------	---------------------------------



VGS1 and descent angles not coincident (VGS1 Angle 3.00/TCH 40).				
CATEGORY	A	B	C	D
S-35	1100-1 750 (800-1)	1100-1 1/4 750 (800-1 1/4)	1100-2	750 (800-2)
<b>C</b> CIRCLING	1100-1 748 (800-1)	1100-1 1/4 748 (800-1 1/4)	1100-2 1/4 748 (800-2 1/4)	1160-2 1/2 808 (900-2 1/2)
DACCI FIX MINIMUMS				
S-35	840-1	490 (500-1)	840-1 3/8	490 (500-1 3/8)
<b>C</b> CIRCLING	960-1 608 (700-1)	980-1 628 (700-1)	980-1 1/4 628 (700-1 1/4)	1160-2 1/2 808 (900-2 1/2)



NE-1, 22 FEB 2024 to 21 MAR 2024

NE-1, 22 FEB 2024 to 21 MAR 2024

HIRL Rwy 17-35 0  
MIRL Rwy 8-26 0  
REIL Rwy 35 0