

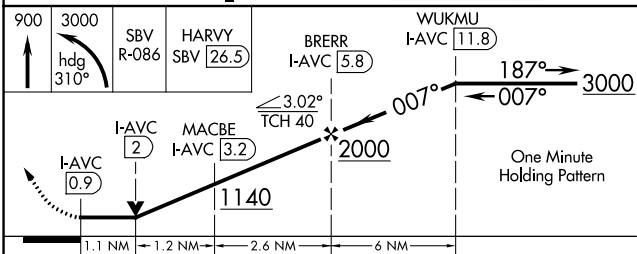
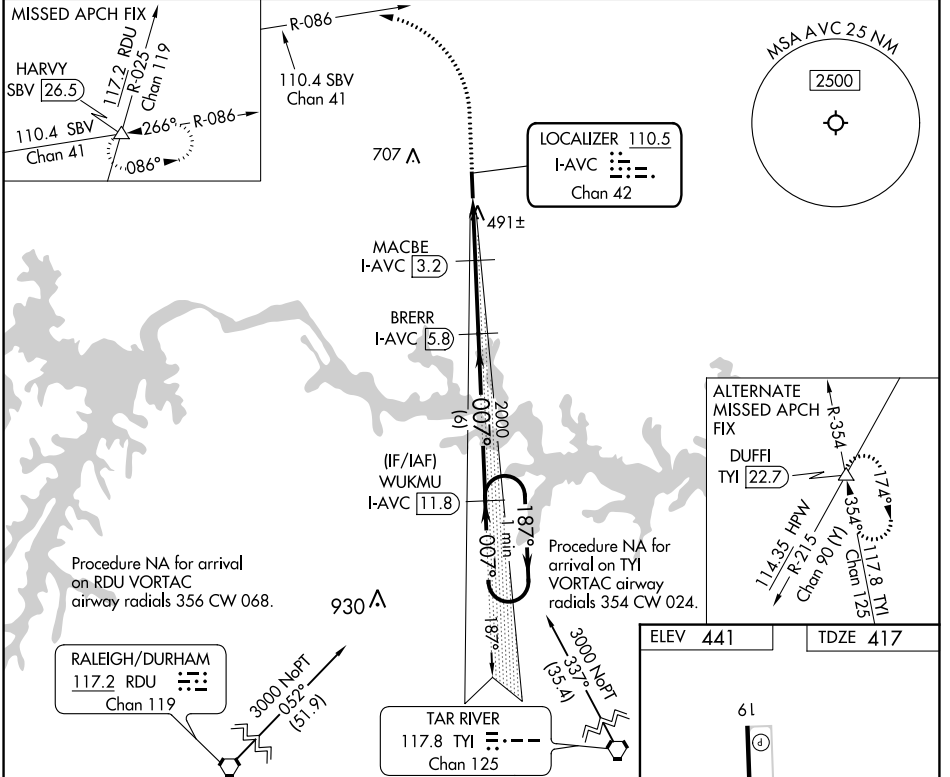
| | | | |
|--|------------------------|-----------------------------|---|
| LOC/DME I-AVC 110.5 Chan 42 | APP CRS 007° | Rwy Idg TDZE Apt Elev | 5002 417 441 |
|--|------------------------|-----------------------------|---|

LOC RWY 1

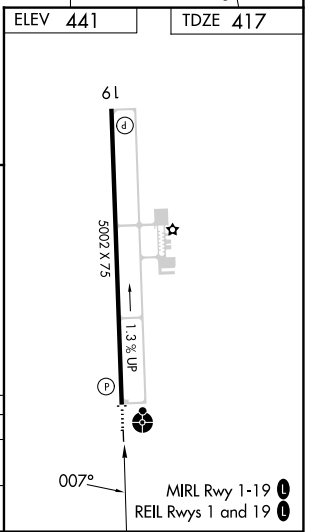
MECKLENBURG-BRUNSWICK RGNL (AVC)

| | | |
|--|--------------|--|
| DME required. DME required for procedure entry. | ODALS ⦿ ⋮ | MISSED APPROACH: Climb to 900 then climbing left turn to 3000 on heading 310° and SBV VORTAC R-086 to HARVY INT/SBV 26.5 DME and hold. |
| ⚠ Rwy 1 helicopter visibility reduction below 3/4 SM NA. | | |
| ⚠ Inop table does not apply. | | |

| | | |
|--------------------------|--|---------------------------------|
| AWOS-3 127.525 | WASHINGTON CENTER 118.75 377.1 | UNICOM 122.8 (CTAF) 0 |
|--------------------------|--|---------------------------------|



| | | | | |
|----------|----------------------|----------------------|-------------------------------|-----------------------|
| CATEGORY | A | B | C | D |
| S-01 | | 760-1 | 343 (400-1) | |
| CIRCLING | 860-1 419 (500-1) | 900-1 459 (500-1) | 1060-1 3/4 619 (700-1 3/4) | 1060-2 619 (700-2) |



NE-3, 22 FEB 2024 to 21 MAR 2024

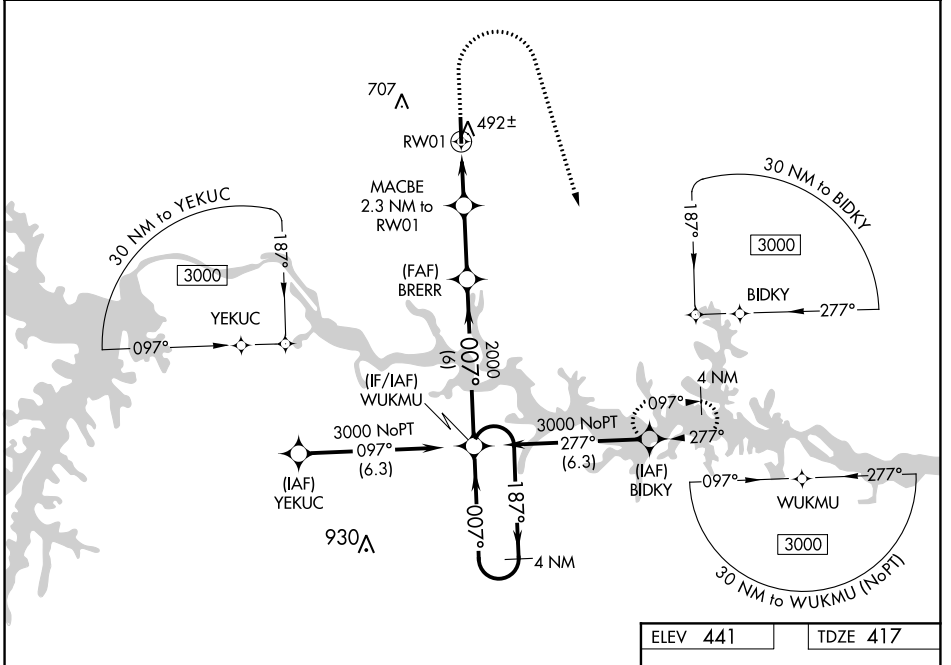
NE-3, 22 FEB 2024 to 21 MAR 2024

| | | | |
|--|------------------------|---|-------------|
| WAAS CH 63118 W01A | APP CRS 007° | Rwy Idg TDZE 417 Apt Elev 441 | 5002 |
|--|------------------------|---|-------------|

RNAV (GPS) RWY 1

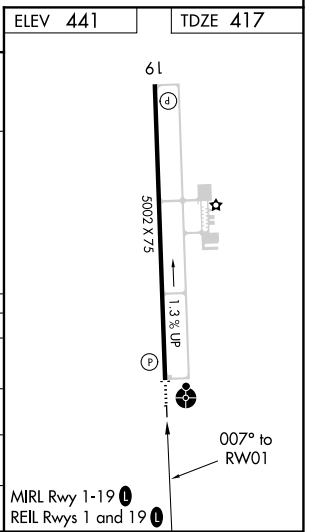
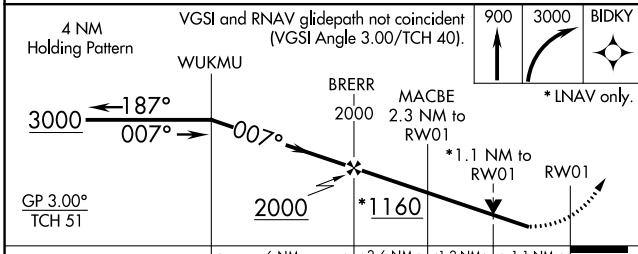
MECKLENBURG-BRUNSWICK RGNL (A/C)

| | | |
|--|--|--|
| <p>▼ For uncompensated Baro-VNAV systems, LNAV/VNAV NA below -15°C (5°F) or above 54°C (130°F). DME/DME RNP-0.3 NA. Rwy 1 helicopter visibility reduction below 3/4 SM NA. For inop ALS, increase LPV all visibility to 1 1/2 SM.</p> | <p>ODALS</p> | <p>MISSED APPROACH: Climb to 900 then climbing right turn to 3000 direct BIDKY and hold.</p> |
| <p>AWOS-3 127.525</p> | <p>WASHINGTON CENTER 118.75 377.1</p> | <p>UNICOM 122.8 (CTAF) 0</p> |



NE-3, 22 FEB 2024 to 21 MAR 2024

NE-3, 22 FEB 2024 to 21 MAR 2024



| CATEGORY | A | B | C | D |
|--------------|-------------|-------------|-----------------|-------------|
| LPV DA | | 714-1 | 297 (300-1) | |
| LNAV/VNAV DA | | 692-1 | 275 (300-1) | |
| LNAV MDA | | 760-1 | 343 (400-1) | |
| CIRCLING | 860-1 | 900-1 | 1060-1 3/4 | 1060-2 |
| | 419 (500-1) | 459 (500-1) | 619 (700-1 3/4) | 619 (700-2) |

