

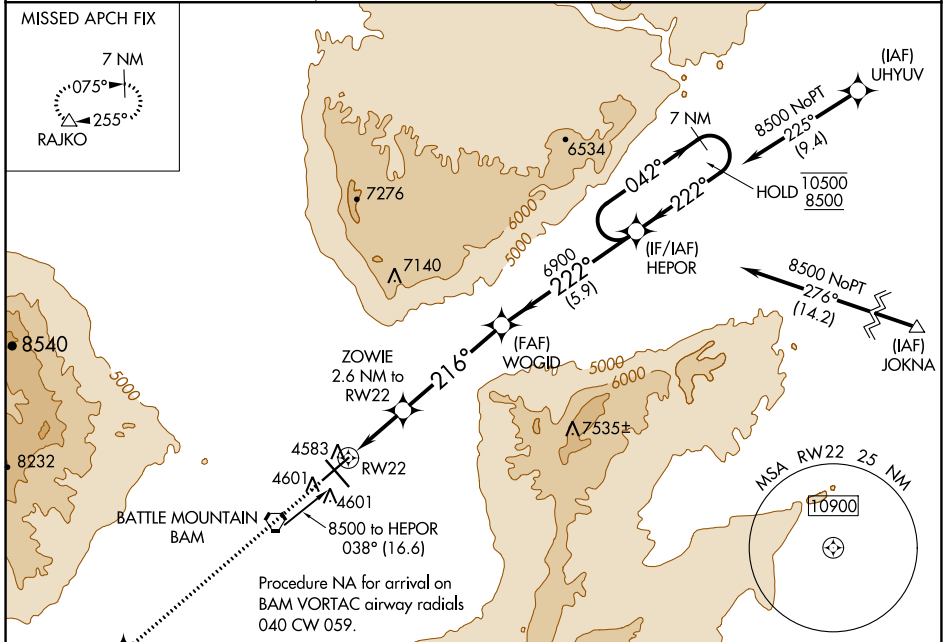
WAAS CH 82741 W22A	APP CRS 216°	Rwy Idg TDZE 4533 Apt Elev 4536	7300 4533 4536
--	------------------------	---	---

RNAV (GPS) RWY 22

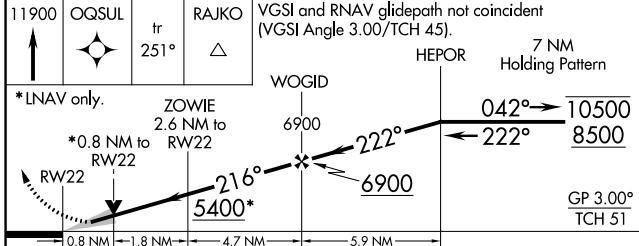
BATTLE MOUNTAIN (BAM)

RNP APCH.	MISSED APPROACH: Climb to 11900 direct OQSUL and track 251° to RAJKO and hold, continue climb-in-hold to 11900.
	Baro-VNAV NA.

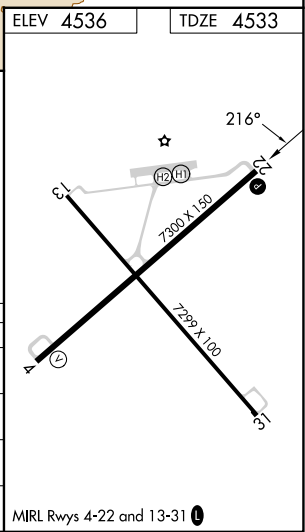
AWOS-3 119.45	SALT LAKE CITY CENTER 132.25 338.35	UNICOM 122.8 (CTAF)
-------------------------	---	-------------------------------



ELEV 4536	TDZE 4533
-----------	-----------



CATEGORY	A	B	C	D
LPV DA		4753-1	220 (300-1)	
RNAV/VNAV DA		4808-1	275 (300-1)	
RNAV MDA	4980-1	447 (500-1)	4980-1 $\frac{3}{8}$	447 (500-1 $\frac{3}{8}$)
CIRCLING	4980-1 444 (500-1)	5000-1 464 (500-1)	5000-1 $\frac{1}{2}$ 464 (500-1 $\frac{1}{2}$)	5460-3 924 (1000-3)



SW-4, 22 FEB 2024 to 21 MAR 2024

SW-4, 22 FEB 2024 to 21 MAR 2024

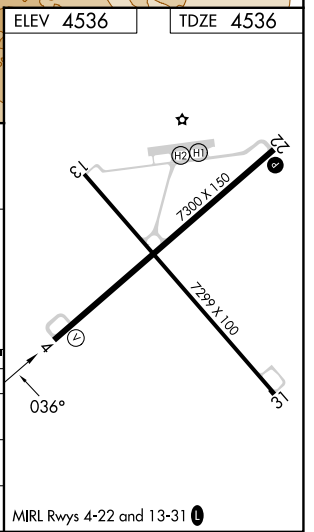
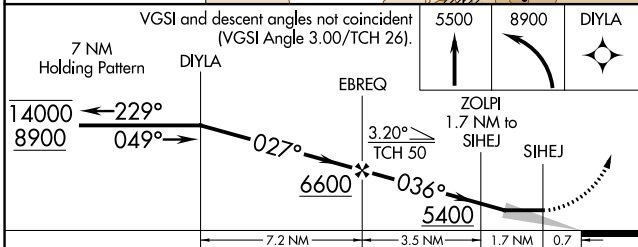
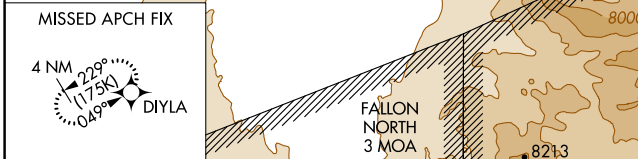
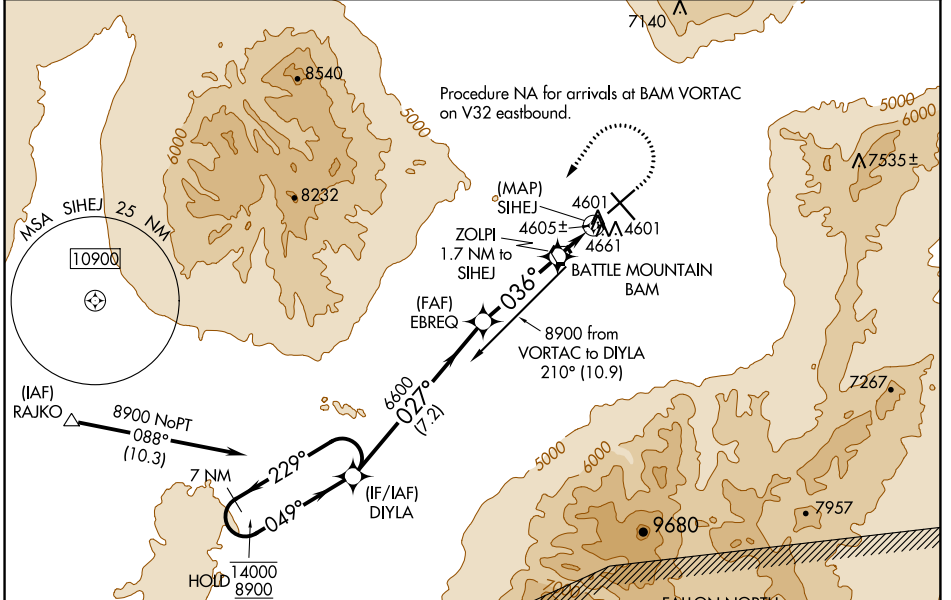
MRL Rwy 4-22 and 13-31

WAAS CH 90143 W04A	APP CRS 036°	Rwy Idg TDZE Apt Elev	7300 4536 4536
--	------------------------	-----------------------------	---

RNAV (GPS) RWY 4

BATTLE MOUNTAIN (BAM)

RNP APCH.	MISSED APPROACH: (Do not exceed 175K until DIYLA) Climb to 5500 then climbing left turn to 8900 direct DIYLA and hold, do not exceed 230K when continuing climb-in-hold to 8900.	
AWOS-3 119.45	SALT LAKE CITY CENTER 132.25 338.35	UNICOM 122.8 (CTAF)



CATEGORY	A	B	C	D
LP MDA	4860-1	324 (400-1)		NA
LNAV MDA	5020-1	484 (500-1)		NA
C CIRCLING	5020-1	484 (500-1)		NA

SW-4, 22 FEB 2024 to 21 MAR 2024

SW-4, 22 FEB 2024 to 21 MAR 2024

VORTAC BAM 112.2 Chan 59	APP CRS 036°	Rwy Idg TDZE Apt Elev 7300 4536 4536
--	------------------------	--

VOR RWY 4

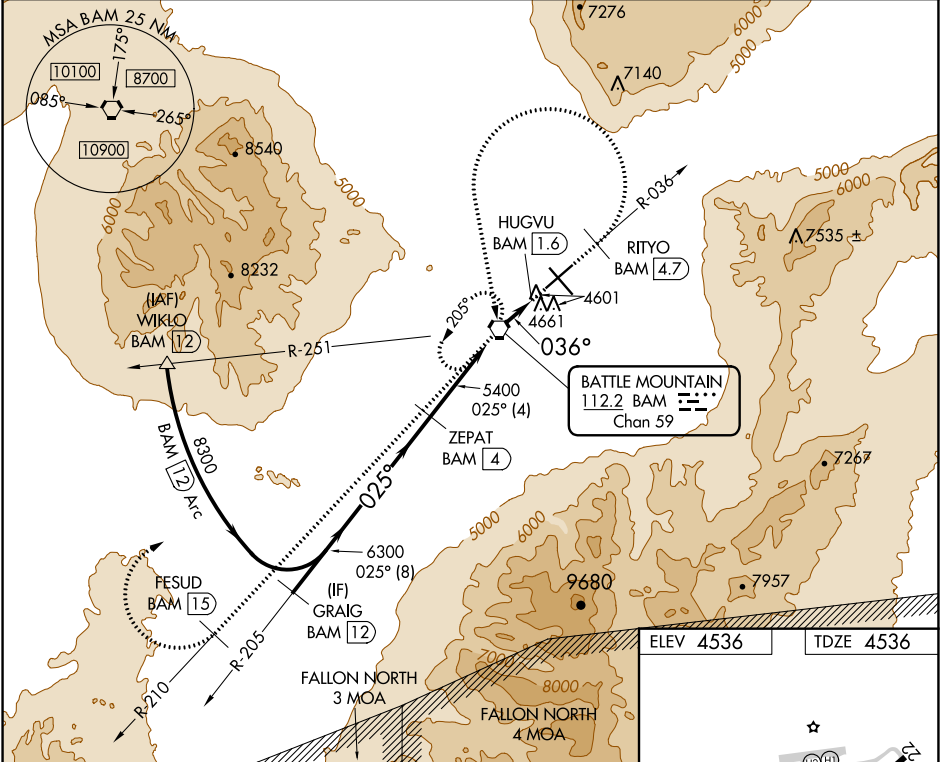
BATTLE MOUNTAIN (BAM)

DME required.

▽
▲

MISSED APPROACH: Climb to 10000 on BAM VORTAC R-036 to RITYO/BAM VORTAC 4.7 DME and left turn direct BAM VORTAC and on BAM VORTAC R-210 to FESUD/BAM 15 DME and right turn direct BAM VORTAC and hold.

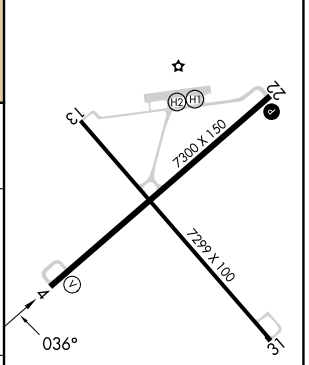
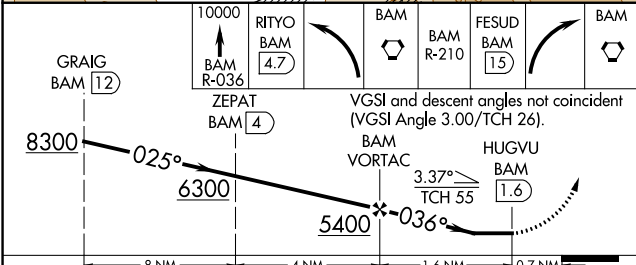
AWOS-3 119.45	SALT LAKE CITY CENTER 132.25 338.35	UNICOM 122.8 (CTAF)
-------------------------	---	-------------------------------



SW-4, 22 FEB 2024 to 21 MAR 2024

SW-4, 22 FEB 2024 to 21 MAR 2024

ELEV 4536	TDZE 4536
-----------	-----------



CATEGORY	A	B	C	D
S-4	4920-1	384 (400-1)		NA
CIRCLING	4980-1 444 (500-1)	5000-1 464 (500-1)		NA

MIRL Rwy 4-22 and 13-31