

WAAS CH <b>53608</b> <b>W17A</b>	APP CRS <b>173°</b>	Rwy Idg <b>4605</b> TDZE <b>1827</b> Apt Elev <b>1827</b>
--	------------------------	---

# RNAV (GPS) RWY 17

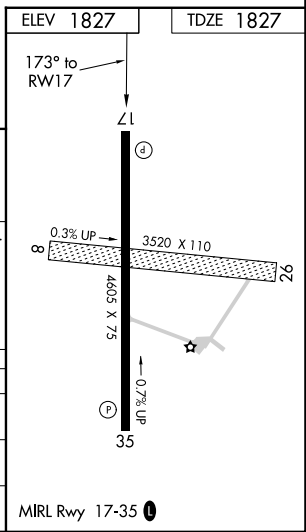
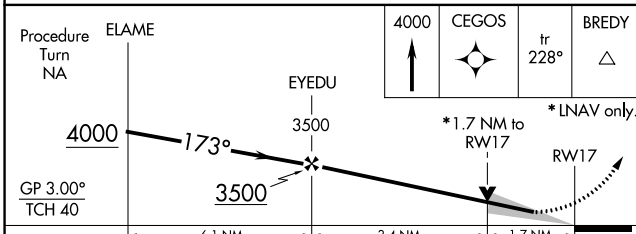
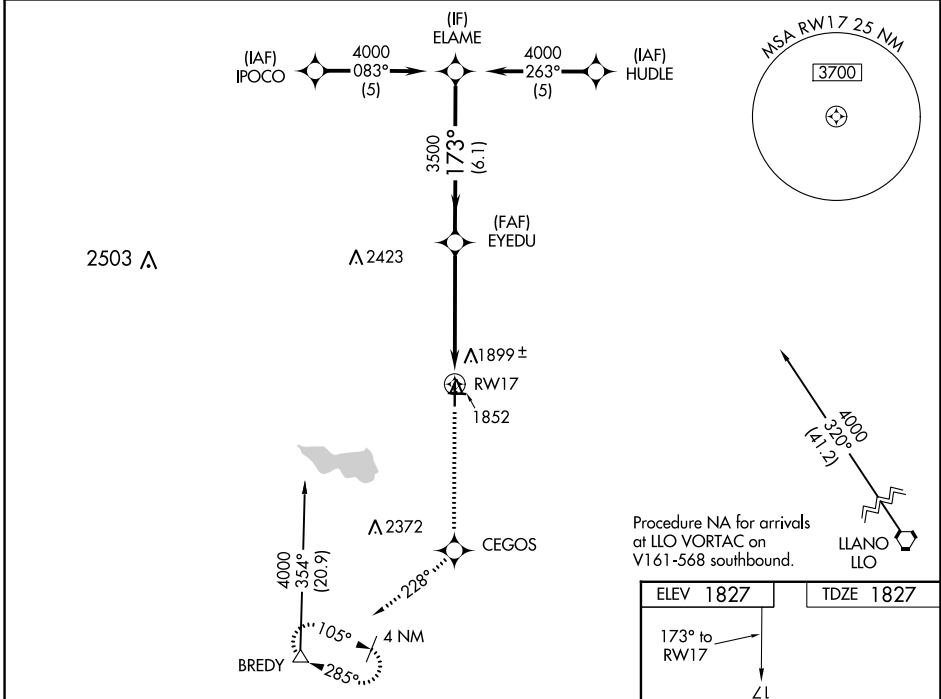
CURTIS FLD (BBD)

RNP APCH.

**⚠** For uncompensated Baro-VNAV systems, LNAV/VNAV NA below -18°C (0°F) or above 54°C (130°F). When local altimeter setting not received, use Junction altimeter setting and increase all DA/MDA 120 feet, increase LPV all Cnts visibility ¼ mile, LNAV/VNAV all Cnts visibility ½ mile, and LNAV Cat C visibility ½ mile. VDP and Baro-VNAV NA when using Junction altimeter setting.

MISSED APPROACH: Climb to 4000 direct CEGOS and on track 228° to BREDY and hold.

AWOS-3 <b>118.375</b>	HOUSTON CENTER <b>132.35 317.5</b>	UNICOM <b>122.8 (CTAF) 0</b>
--------------------------	---------------------------------------	---------------------------------



CATEGORY	A	B	C	D
LPV DA	2077-1	250 (300-1)		NA
LNAV/VNAV DA	2191-1¼	364 (400-1¼)		NA
LNAV MDA	2420-1	593 (600-1)	2420-1½ 593 (600-1½)	NA

SC-3, 22 FEB 2024 to 21 MAR 2024

SC-3, 22 FEB 2024 to 21 MAR 2024

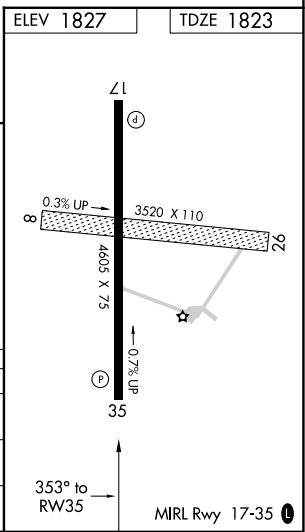
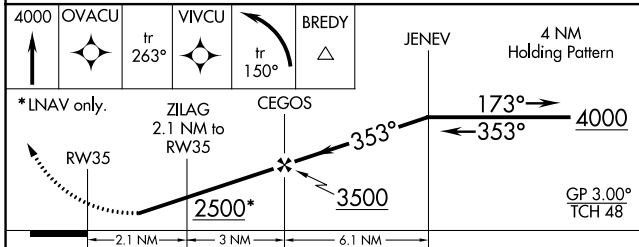
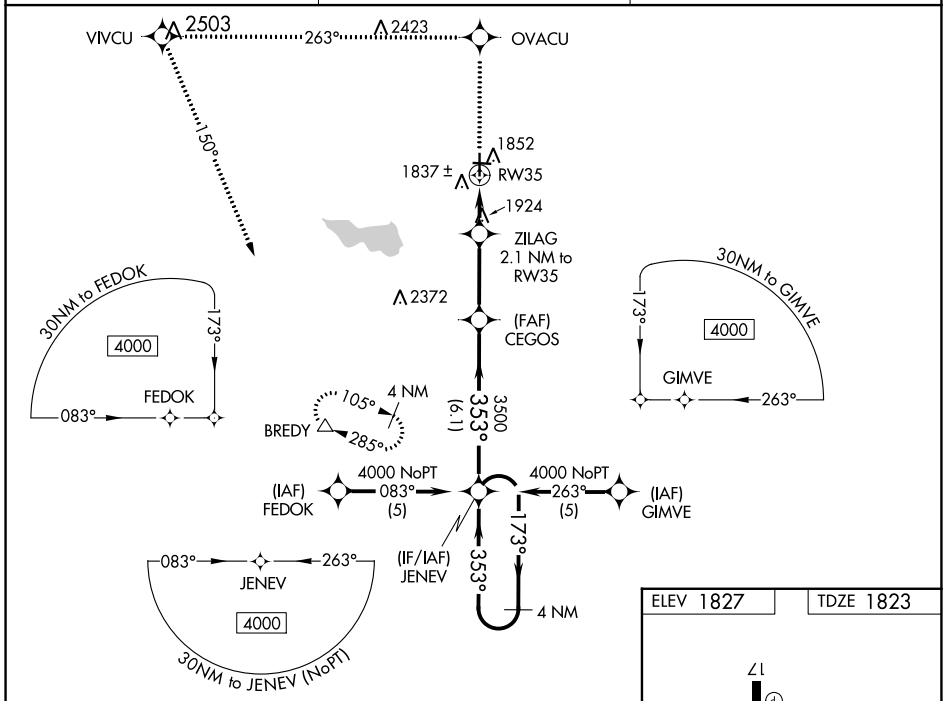
WAAS CH <b>49108</b> <b>W35A</b>	APP CRS <b>353°</b>	Rwy Idg <b>4605</b> TDZE <b>1823</b> Apt Elev <b>1827</b>
--	------------------------	---

# RNAV (GPS) RWY 35

CURTIS FLD (BBD)

RNP APCH.	<p><b>⚠</b> For uncompensated Baro-VNAV systems, LNAV/VNAV NA below -18°C (0°F) or above 54°C (130°F). When local altimeter setting not received, use Junction altimeter setting and increase all DA/MDA 120 feet, increase LPV, LNAV/VNAV all Cats visibility ½ mile, LNAV Cat C visibility ¼ mile. Baro-VNAV NA when using Junction altimeter setting. Rwy 35 helicopter visibility reduction below ¾ SM NA.</p>	<p>MISSED APPROACH: Climb to 4000 direct OVACU and via 263° track to VIVCU and left turn via 150° track to BREDY and hold.</p>
-----------	--	--

AWOS-3 <b>118.375</b>	HOUSTON CENTER <b>132.35 317.5</b>	UNICOM <b>122.8 (CTAF)</b>
--------------------------	---------------------------------------	-------------------------------



CATEGORY	A	B	C	D
LPV DA	2073-1 250 (300-1)			NA
LNAV/VNAV DA	2107-1 284 (300-1)			NA
LNAV MDA	2240-1 417 (500-1)		2240-1¼ 417 (500-1¼)	NA

SC-3, 22 FEB 2024 to 21 MAR 2024

SC-3, 22 FEB 2024 to 21 MAR 2024