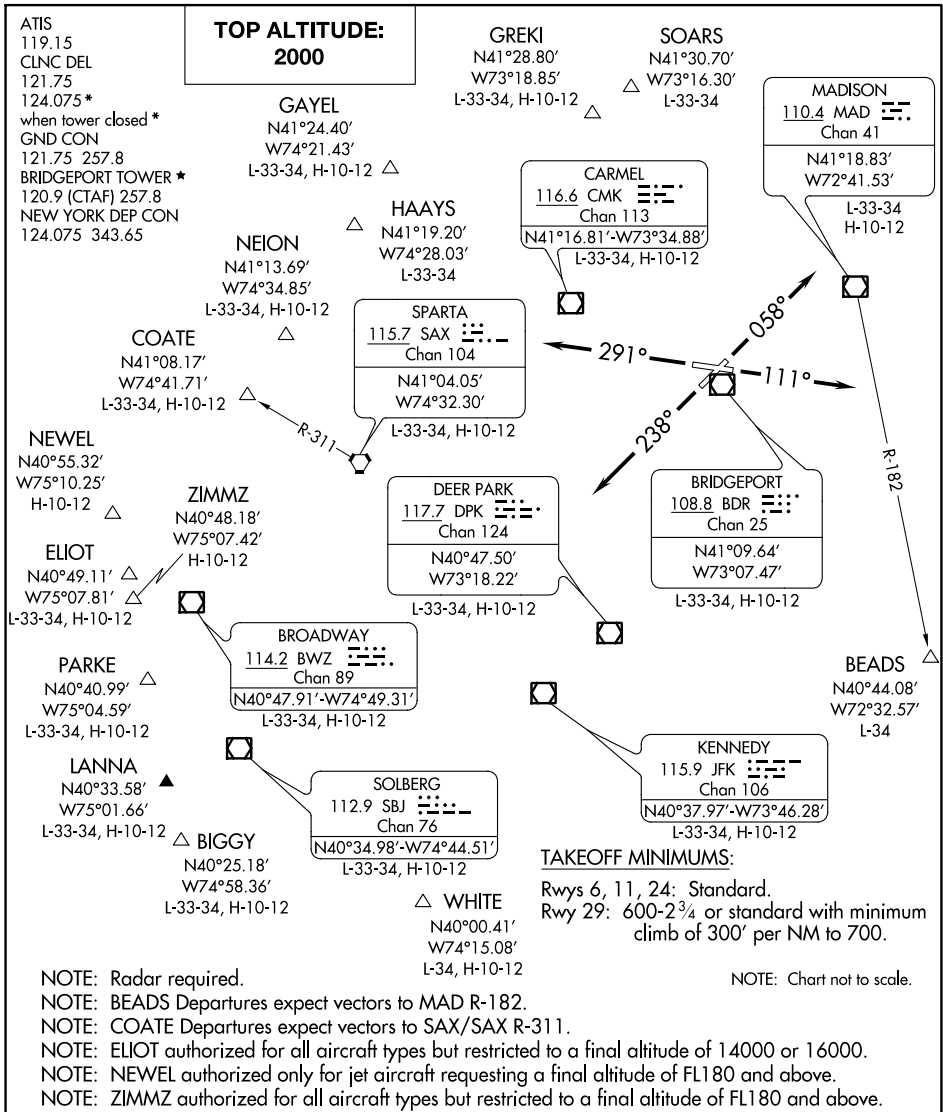


# BRIDGEHAVEN NINE DEPARTURE

AL-621 (FAA)

BRIDGEPORT, CONNECTICUT



NE-1, 09 SEP 2021 to 07 OCT 2021

NE-1, 09 SEP 2021 to 07 OCT 2021

## DEPARTURE ROUTE DESCRIPTION

- TAKEOFF RUNWAY 6:** Climb heading 058°, thence. . .
  - TAKEOFF RUNWAY 11:** Climb heading 111°, thence. . .
  - TAKEOFF RUNWAY 24:** Climb heading 238°, thence. . .
  - TAKEOFF RUNWAY 29:** Climb heading 291°, thence. . .
- . . . expect vectors to assigned route/fix. Maintain 2000. Expect clearance to filed altitude/flight level within ten (10) minutes after departure.

# BRIDGEHAVEN NINE DEPARTURE

BRIDGEPORT, CONNECTICUT



DEPARTURE ROUTE DESCRIPTION

TAKEOFF RUNWAY 6: Climb heading 058°, thence. . . .

TAKEOFF RUNWAY 11: Climb heading 111°, thence. . . .

TAKEOFF RUNWAY 24: Climb heading 238°, thence. . . .

TAKEOFF RUNWAY 29: Climb heading 291°, thence. . . .

. . . .Expect vectors to assigned route/fix. Maintain 2000. Expect clearance to filed altitude/flight level within ten (10) minutes after departure.

NE-1, 09 SEP 2021 to 07 OCT 2021

NE-1, 09 SEP 2021 to 07 OCT 2021