

LOC/DME I-BDR <b>110.7</b> Chan 44	APP CRS <b>060°</b>	Rwy Idg TDZE Apt Elev	<b>4677</b> <b>7</b> <b>9</b>
--	------------------------	-----------------------------	-------------------------------------

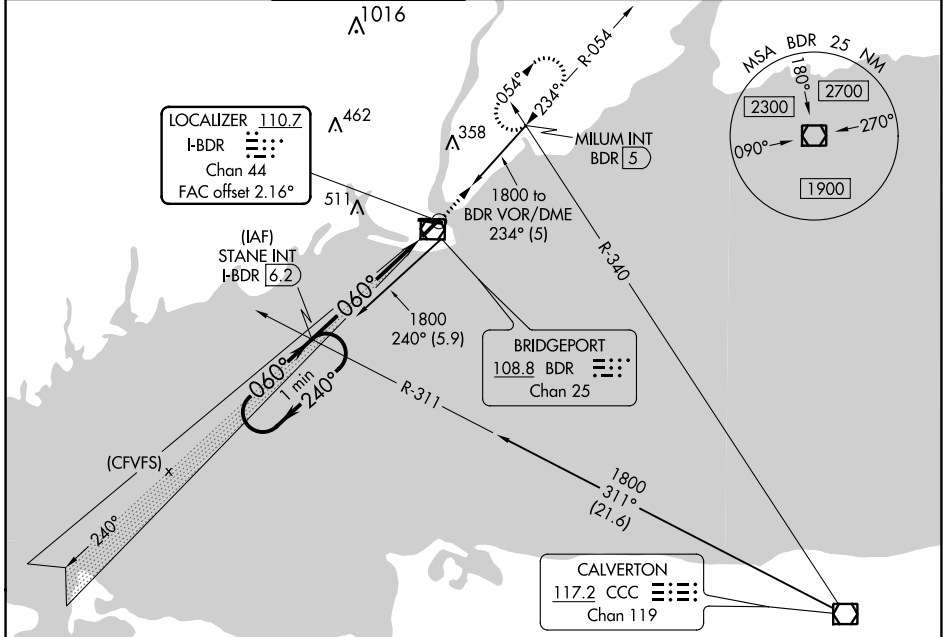
# ILS or LOC RWY 6

IGOR I SIKORSKY MEML (BDR)

**Autopilot coupled approach NA below 350.**  
**When VGSI inop, Circling Rwy 11 NA at night.**

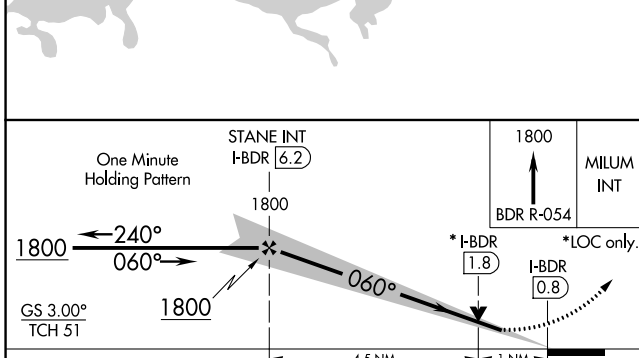
**MISSED APPROACH: Climb to 1800 on the BDR VOR/DME R-054 to MILUM INT and hold.**

ATIS <b>119.15</b>	NEW YORK APP CON <b>124.075 343.65</b>	BRIDGEPORT TOWER* <b>120.9</b> (CTAF) <b>257.8</b>	GND CON <b>121.75 257.8</b>	CLNC DEL <b>121.75</b>	CLNC DEL <b>124.075</b> (When twr closed)	UNICOM <b>123.0</b>
-----------------------	---	---	--------------------------------	---------------------------	---	------------------------

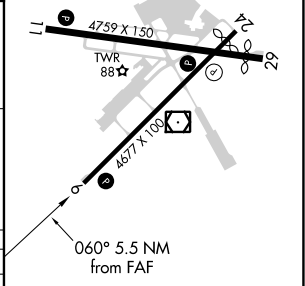


NE-1, 09 SEP 2021 to 07 OCT 2021

NE-1, 09 SEP 2021 to 07 OCT 2021



ELEV	9	D	TDZE	7
------	---	---	------	---



CATEGORY	A	B	C	D
S-ILS 6		257-¾	250 (300-¾)	
S-LOC 6		380-1	373 (400-1)	
<b>C</b> CIRCLING	480-1 471 (500-1)	620-1 611 (700-1)	820-2½ 811 (900-2½)	820-2¾ 811 (900-2¾)

REIL Rwy 6, 11, 24, and 29	
HIRL Rwy 6-24 and 11-29	
FAF to MAP 5.5 NM	
Knots	60 90 120 150 180
Min:Sec	5:30 3:40 2:45 2:12 1:50

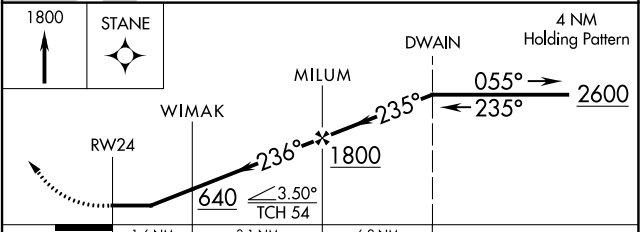
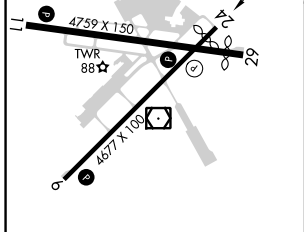
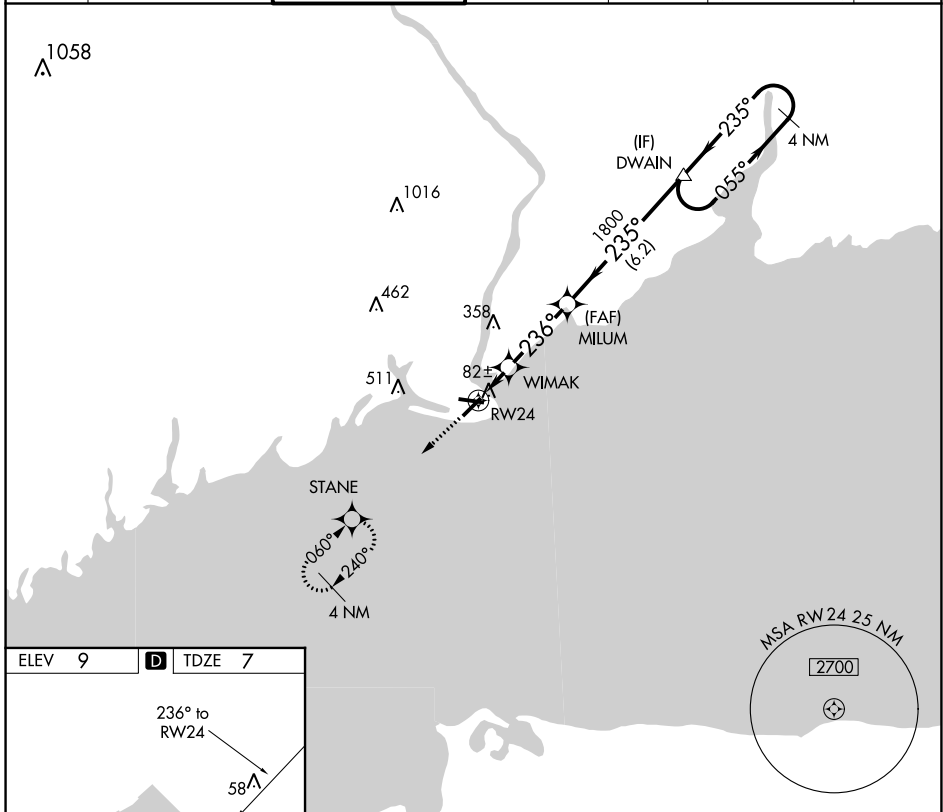
APP CRS <b>236°</b>	Rwy Idg TDZE Apt Elev	<b>4357</b> <b>7</b> <b>9</b>
------------------------	-----------------------------	-------------------------------------

# RNAV (GPS) RWY 24

IGOR I SIKORSKY MEML (BDR)

RNP APCH.	MISSED APPROACH: Climb to 1800 direct STANE and hold.
<p><b>V</b> Rwy 24 helicopter visibility reduction below 1 SM NA.  <b>A</b> When VGSI inop, Circling Rwy 11 NA at night.</p>	

ATIS <b>119.15</b>	NEW YORK APP CON <b>124.075 343.65</b>	BRIDGEPORT TOWER* <b>120.9</b> (CTAF) <b>257.8</b>	GND CON <b>121.75 257.8</b>	CLNC DEL <b>121.75</b>	CLNC DEL <b>124.075</b> (When twr closed)	UNICOM <b>123.0</b>
-----------------------	---	---	--------------------------------	---------------------------	---	------------------------



ELEV 9	<b>D</b> TDZE 7			
REIL Rwy 6, 11, 24, and 29	HIRL Rwy 6-24 and 11-29			
CATEGORY	A	B	C	D
LNAV MDA	340-1 333 (400-1)			
<b>C</b> CIRCLING	480-1 471 (500-1)	620-1 611 (700-1)	820-2½ 811 (900-2½)	820-2¾ 811 (900-2¾)

NE-1, 09 SEP 2021 to 07 OCT 2021

NE-1, 09 SEP 2021 to 07 OCT 2021

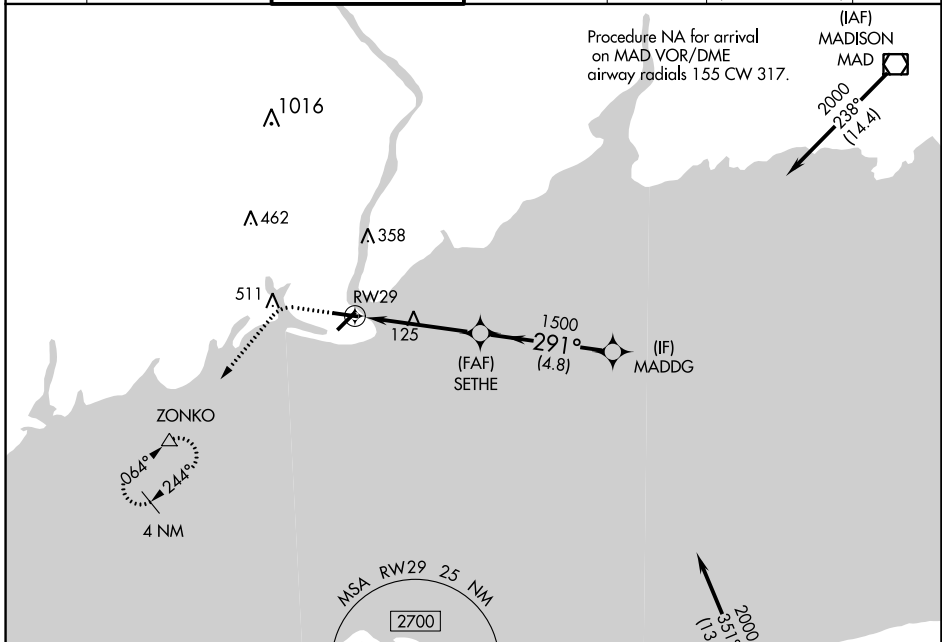
APP CRS <b>291°</b>	Rwy Idg <b>4395</b>
	TDZE <b>7</b>
	Apt Elev <b>9</b>

# RNAV (GPS) RWY 29

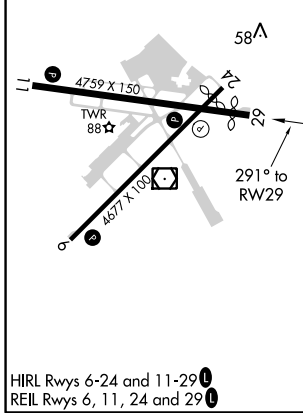
IGOR I SIKORSKY MEML (BDR)

RNP APCH.	MISSED APPROACH: Climb to 500 then climbing left turn to 2000 direct ZONKO and hold.
Rwy 29 helicopter visibility reduction below 1 SM NA.	

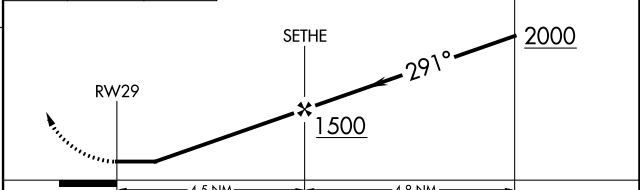
ATIS <b>119.15</b>	NEW YORK APP CON <b>124.075 343.65</b>	BRIDGEPORT TOWER* <b>120.9</b> (CTAF) <b>257.8</b>	GND CON <b>121.75 257.8</b>	CLNC DEL <b>121.75</b>	CLNC DEL <b>124.075</b> (When twr closed)	UNICOM <b>123.0</b>
-----------------------	---	---	--------------------------------	---------------------------	---	------------------------



ELEV 9	<b>D</b>	TDZE 7
--------	----------	--------



500	2000	ZONKO	Visual Segment-Obstacles.



CATEGORY	A	B	C	D
LNAV MDA	380-1		373 (400-1)	
CIRCLING	480-1 471 (500-1)	620-1 611 (700-1)	820-2½ 811 (900-2½)	820-2¾ 811 (900-2¾)

NE-1, 09 SEP 2021 to 07 OCT 2021

NE-1, 09 SEP 2021 to 07 OCT 2021

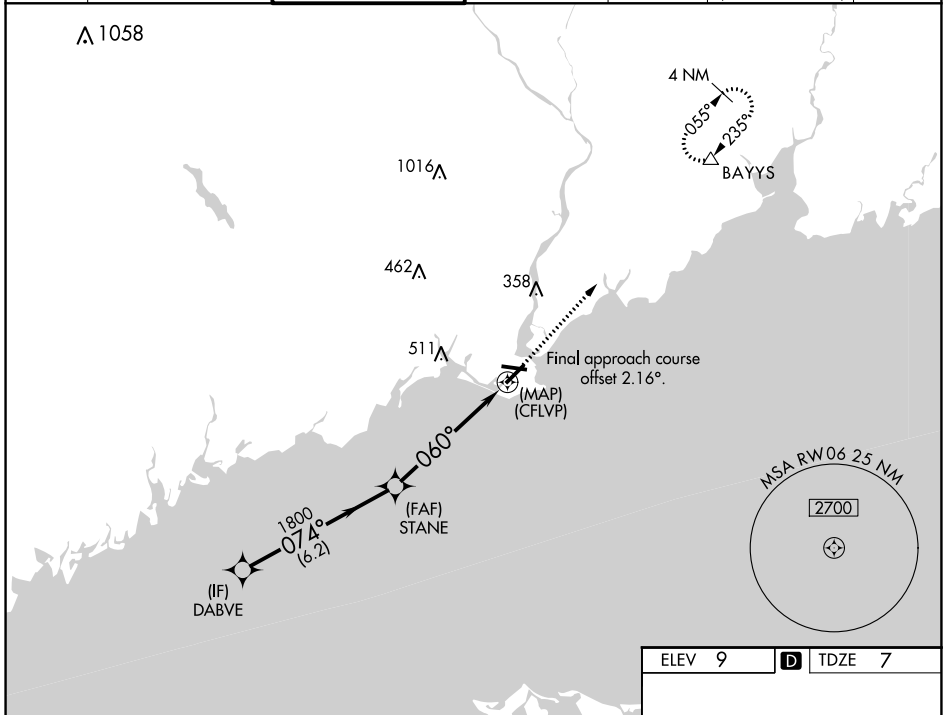
WAAS CH <b>78140</b> <b>W06A</b>	APP CRS <b>060°</b>	Rwy Idg TDZE Apt Elev	<b>4677</b> <b>7</b> <b>9</b>
--	------------------------	-----------------------------	-------------------------------------

# RNAV (GPS) RWY 6

IGOR I SIKORSKY MEML (BDR)

RNP APCH.		When VGSI inop, Circling Rwy 11 NA at night. For uncompensated Baro-VNAV systems, LNAV/VNAV NA below -15°C (5°F) or above 54°C (130°F).			MISSED APPROACH: Climb to 2600 direct BAYYS and hold.	
-----------	--	---	--	--	---	--

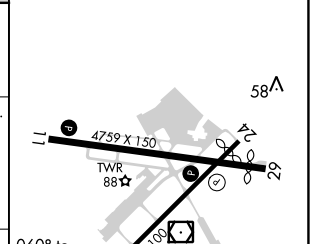
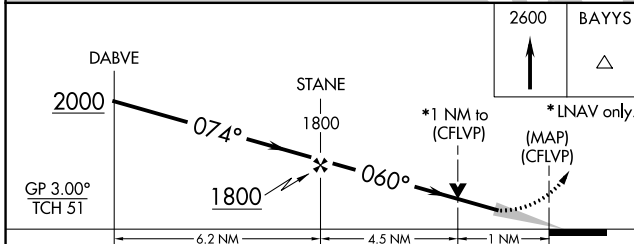
ATIS <b>119.15</b>	NEW YORK APP CON <b>124.075 343.65</b>	BRIDGEPORT TOWER* <b>120.9</b> (CTAF) <b>257.8</b>	GND CON <b>121.75 257.8</b>	CLNC DEL <b>121.75</b>	CLNC DEL <b>124.075</b> (When twr closed)	UNICOM <b>123.0</b>
-----------------------	---	---	--------------------------------	---------------------------	---	------------------------



NE-1, 09 SEP 2021 to 07 OCT 2021

NE-1, 09 SEP 2021 to 07 OCT 2021

ELEV 9	<b>D</b> TDZE 7
--------	-----------------



CATEGORY	A	B	C	D
LPV DA		257-3/4	250 (300-3/4)	
LNAV/VNAV DA		273-7/8	266 (300-7/8)	
LNAV MDA		380-1	373 (400-1)	
<b>C</b> CIRCLING	480-1 471 (500-1)	620-1 611 (700-1)	820-2 1/2 811 (900-2 1/2)	820-2 3/4 811 (900-2 3/4)

REIL Rwys 6, 11, 24, and 29 **L**  
HIRL Rwys 6-24 and 11-29 **L**