

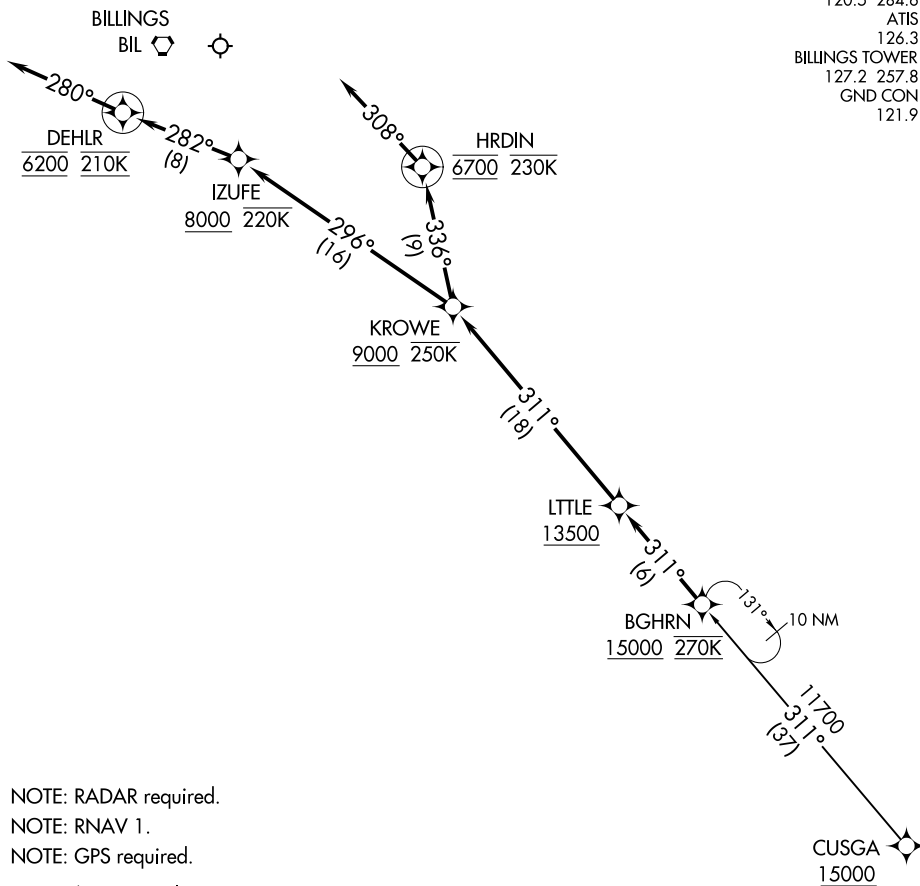
(BGHRN.BGHRN3) 18256

BGHRN THREE ARRIVAL (RNAV)

AI-48 (FAA)

BILLINGS LOGAN INTL (BIL)
BILLINGS, MONTANA

BILLINGS APP CON	120.5	284.6
ATIS	126.3	
BILLINGS TOWER	127.2	257.8
GND CON	121.9	



- NOTE: RADAR required.
- NOTE: RNAV 1.
- NOTE: GPS required.
- NOTE: Chart not to scale.

ARRIVAL ROUTE DESCRIPTION

CUSGA TRANSITION (CUSGA.BGHRN3)

From BGHRN on track 311° to cross LITTLE at or above 13500, then on track 311° to cross KROWE at or above 9000 and at or below 250K.

LANDING RUNWAY 10L: From KROWE on track 296° to cross IZUFE at or above 8000 and at or below 220K, then on track 282° to cross DEHLR at 6200 and at 210K, then on heading 280° or as assigned by ATC. Expect assigned approach or RADAR vectors to final approach course.

LANDING RUNWAY 28R: From KROWE on track 336° to cross HRDIN at 6700 and at or below 230K, then on heading 308° or as assigned by ATC. Expect assigned approach or RADAR vectors to final approach course.

BGHRN THREE ARRIVAL (RNAV)

(BGHRN.BGHRN3) 13SEP18

BILLINGS, MONTANA
BILLINGS LOGAN INTL (BIL)

NW-1, 22 FEB 2024 to 21 MAR 2024

NW-1, 22 FEB 2024 to 21 MAR 2024

CRAZI FOUR ARRIVAL (RNAV)
(CRAZI.CRAZI4) 20APR23

BILLINGS APP CON
120.5 284.6
ATIS
126.3
BILLINGS TOWER
127.2 257.8
GND CON
121.9

RNAV 1 - GPS
RADAR required.

ARRIVAL ROUTE DESCRIPTION

BYRCH TRANSITION (BYRCH.CRAZI4)
EDYTH TRANSITION (EDYTH.CRAZI4)
LOKOW TRANSITION (LOKOW.CRAZI4)

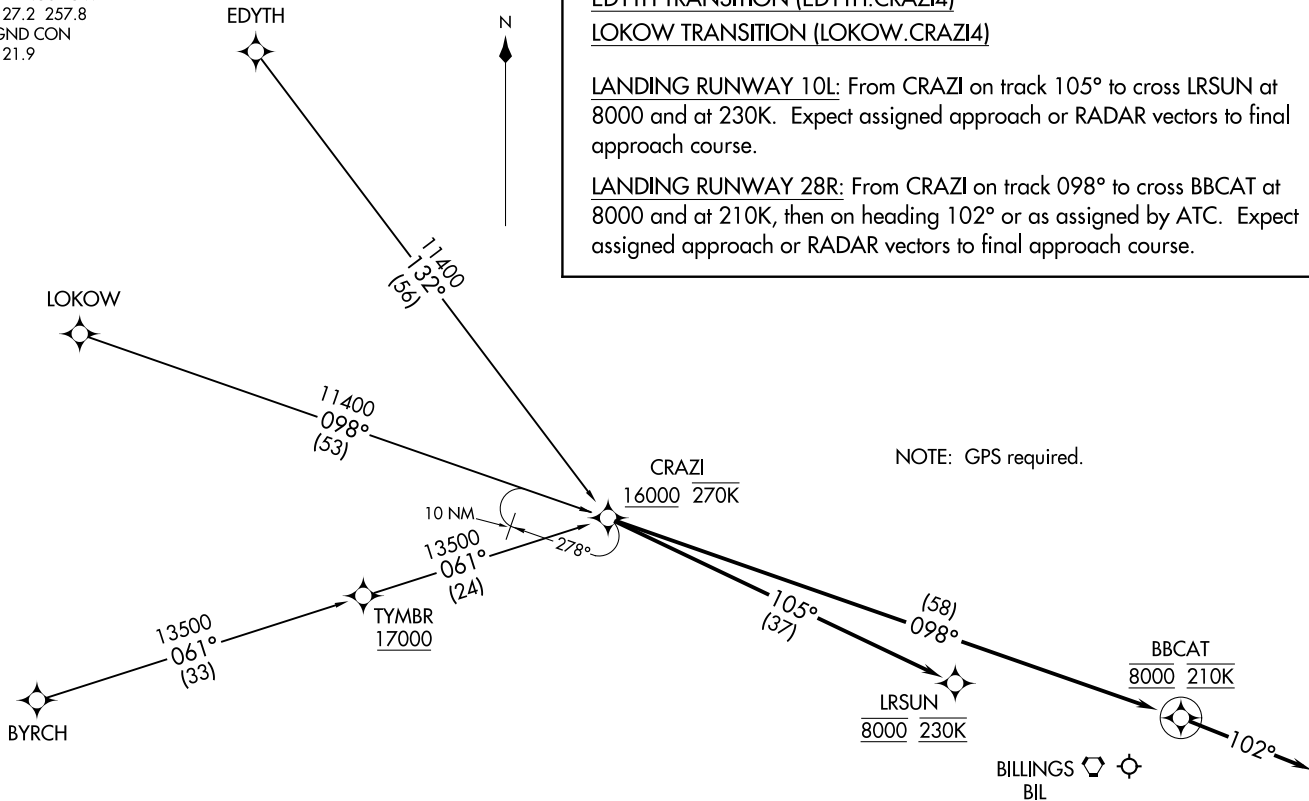
LANDING RUNWAY 10L: From CRAZI on track 105° to cross LRSUN at 8000 and at 230K. Expect assigned approach or RADAR vectors to final approach course.

LANDING RUNWAY 28R: From CRAZI on track 098° to cross BBCAT at 8000 and at 210K, then on heading 102° or as assigned by ATC. Expect assigned approach or RADAR vectors to final approach course.

(CRAZI.CRAZI4) 23110
CRAZI FOUR ARRIVAL (RNAV)

AL-48 (FAA)

BILLINGS LOGAN INTL (BITL)
BILLINGS, MONTANA



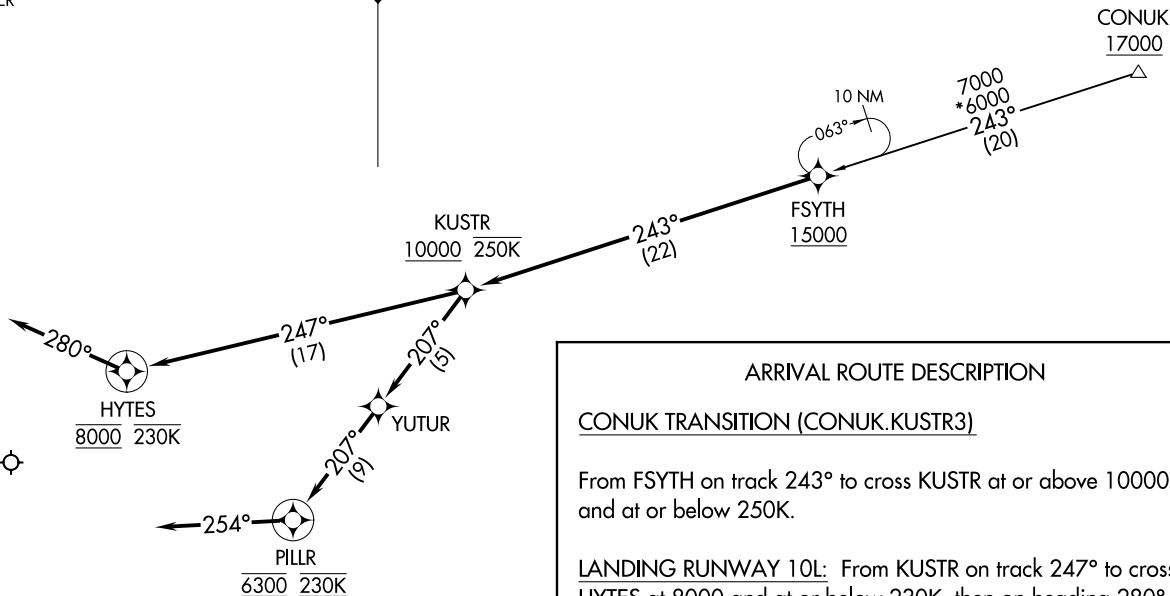
NOTE: GPS required.

NOTE: Chart not to scale.

BILLINGS, MONTANA
BILLINGS LOGAN INTL (BITL)

KUSTR THREE ARRIVAL (RNAV)
(FSYTH, KUSTR3) 13SEP18

BILLINGS APP CON
120.5 284.6
ATIS
126.3
BILLINGS TOWER
127.2 257.8
GND CON
121.9



ARRIVAL ROUTE DESCRIPTION

CONUK TRANSITION (CONUK.KUSTR3)

From FSYTH on track 243° to cross KUSTR at or above 10000 and at or below 250K.

LANDING RUNWAY 10L: From KUSTR on track 247° to cross HYTES at 8000 and at or below 230K, then on heading 280° or as assigned by ATC. Expect RADAR vectors to final approach course.

LANDING RUNWAY 28R: From KUSTR on track 207° to YUTUR, then on track 207° to cross PILLR at 6300 and at 230K, then on heading 254° or as assigned by ATC. Expect assigned approach or RADAR vectors to final approach course.

NOTE: RADAR required.
NOTE: RNAV 1.
NOTE: GPS required.
NOTE: Chart not to scale.

BILLINGS, MONTANA
BILLINGS LOGAN INTL (BITL)

(FSYTH, KUSTR3) 18256
KUSTR THREE ARRIVAL (RNAV)

AL-48 (FAA)

BILLINGS LOGAN INTL (BITL)
BILLINGS, MONTANA

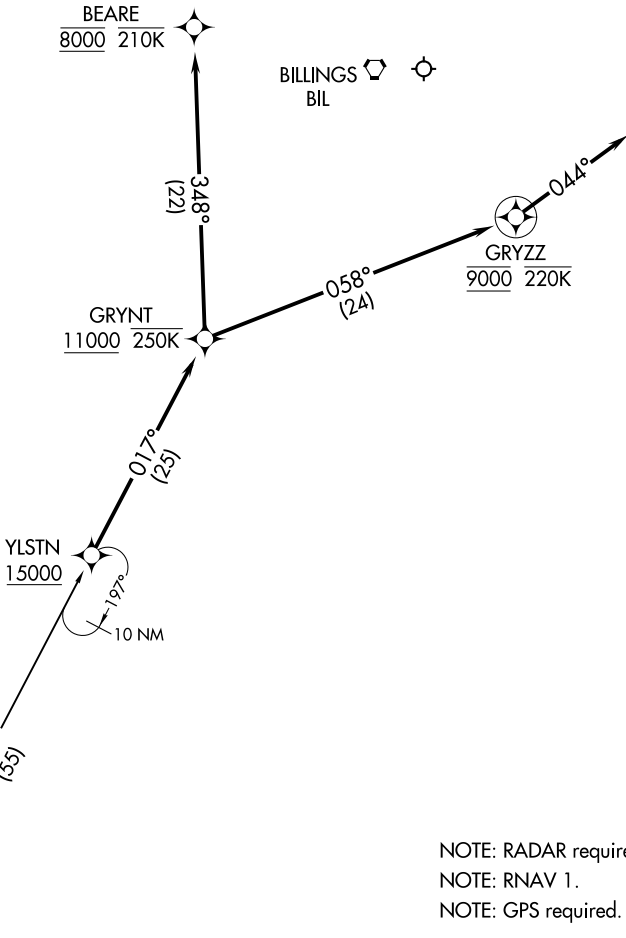
(YLSTN.YLSTN3) 18256

YLSTN THREE ARRIVAL (RNAV)

AL-48 (FAA)

BILLINGS LOGAN INTL (BIL)
BILLINGS, MONTANA

BILLINGS APP CON
120.5 284.6
ATIS
126.3
BILLINGS TOWER
127.2 257.8
GND CON
121.9



NOTE: RADAR required.
NOTE: RNAV 1.
NOTE: GPS required.

NOTE: Chart not to scale.

ARRIVAL ROUTE DESCRIPTION

JEKUG TRANSITION (JEKUG.YLSTN3)

From YLSTN on track 017° to cross GRYNT at or above 11000 and at or below 250K.

LANDING RUNWAY 10L: From GRYNT on track 348° to cross BEARE at 8000 and at or below 210K. Expect assigned approach or RADAR vectors to final approach course.

LANDING RUNWAY 28R: From GRYNT on track 058° to cross GRYZZ at 9000 and at or below 220K, then on heading 044°. Expect assigned approach or RADAR vectors to final approach course.

YLSTN THREE ARRIVAL (RNAV)

(YLSTN.YLSTN3) 13SEP18

BILLINGS, MONTANA
BILLINGS LOGAN INTL (BIL)

NW-1, 22 FEB 2024 to 21 MAR 2024

NW-1, 22 FEB 2024 to 21 MAR 2024