

WAAS CH 90133 W13A	APP CRS 125°	Rwy Idg TDZE Apt Elev	5085 3370 3373
--	------------------------	-----------------------------	---

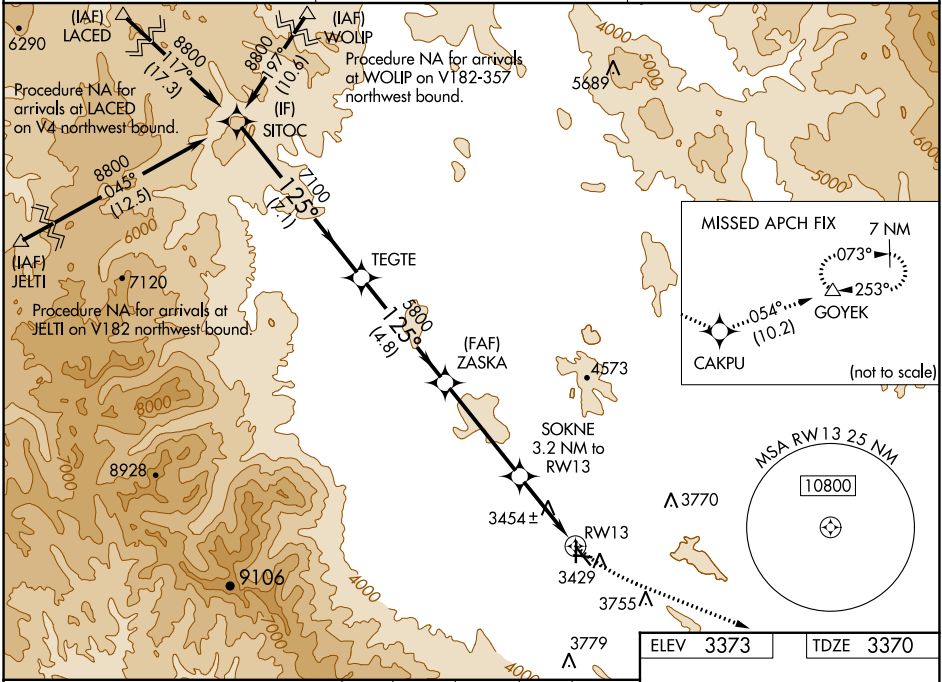
RNAV (GPS) RWY 13

BAKER CITY MUNI (BKE)

⚠ For uncompensated Baro-VNAV systems, LNAV/VNAV NA below -22°C (-7°F) or above 51°C (124°F). Rwy 13 helicopter visibility reduction below 3/4 SM NA. DME/DME RNP-0.3 NA. Circling Rwy 8, 17, 26, and 35 NA at night.

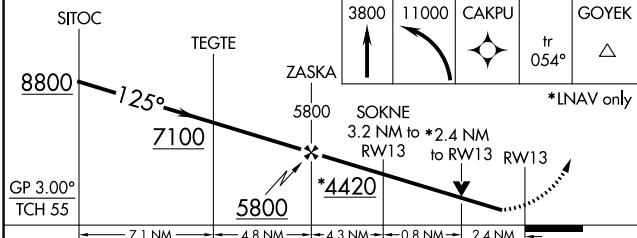
MISSED APPROACH: Climb to 3800 then climbing left turn to 11000 direct CAKPU and on track 054° to GOYEK and hold, continue climb-in-hold to 11000. # Missed approach requires minimum climb of 266 feet per NM to 4580.

ASOS 134.275	SALT LAKE CENTER 128.05 306.95	UNICOM 123.0 (CTAF)
-------------------------------	---	--------------------------------------



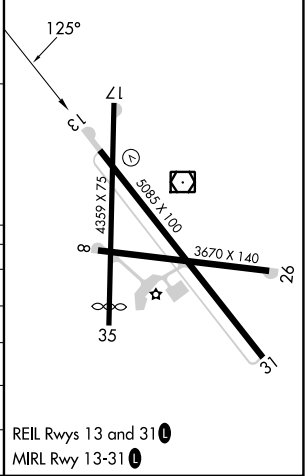
NW-1, 22 FEB 2024 to 21 MAR 2024

NW-1, 22 FEB 2024 to 21 MAR 2024



ELEV	3373	TDZE	3370
------	------	------	------

CATEGORY	A	B	C	D
LPV DA #		3621-3/4	251 (300-3/4)	
LPV DA		3833-1 1/2	463 (500-1 1/2)	
LNAV/VNAV DA		3916-1 7/8	546 (600-1 7/8)	
LNAV MDA	4200-1 830 (900-1)	4200-1 1/4 830 (900-1 1/4)	4200-2 1/2	830 (900-2 1/2)
C CIRCLING	4200-1 1/4	827 (900-1 1/4)	4560-3 1187 (1200-3)	4720-3 1347 (1400-3)



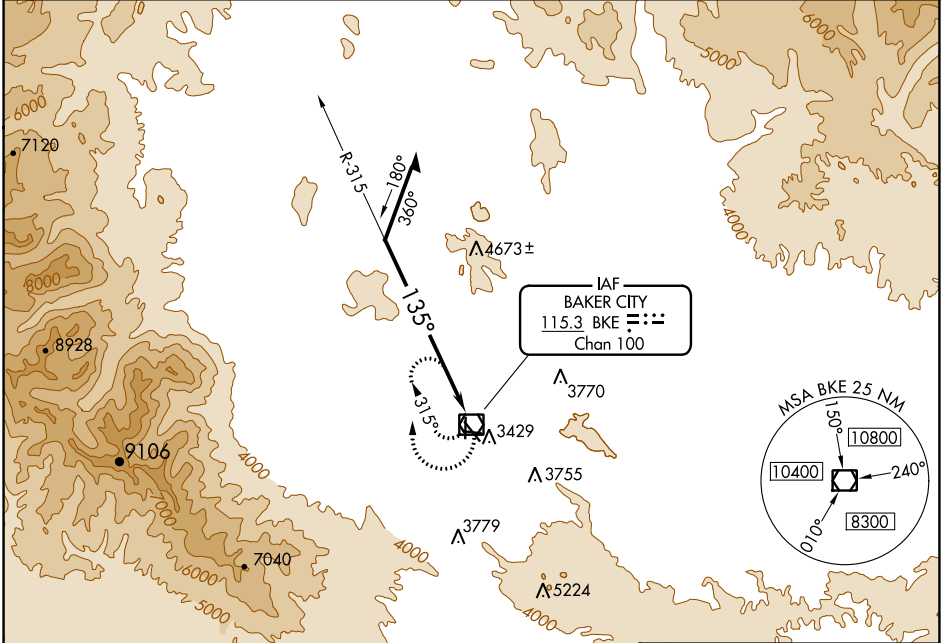
VOR/DME BKE 115.3 Chan 100	APP CRS 135°	Rwy Idg TDZE Apt Elev 3373	N/A N/A 3373
--	------------------------	--------------------------------------	--------------------

VOR-A

BAKER CITY MUNI (BKE)

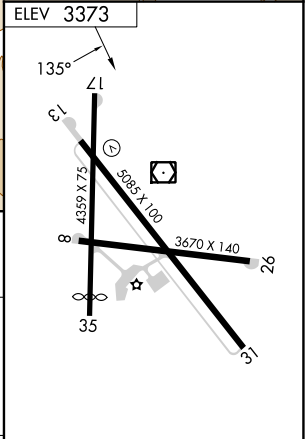
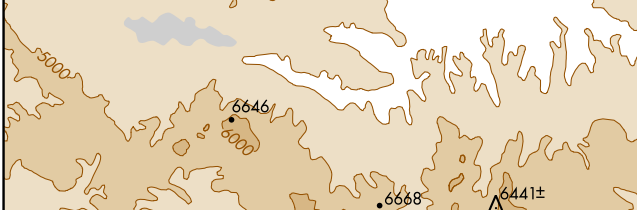
<p>Circling to Rwy 8/17/26/35 NA at night. Helicopter visibility reduction below 1 SM NA.</p>	<p>MISSED APPROACH: Climbing right turn to 6900 in BKE VOR/DME holding pattern.</p>
---	---

ASOS 134.275	SALT LAKE CENTER 128.05 306.95	UNICOM 123.0 (CTAF) 0
------------------------	--	---------------------------------



NW-1, 22 FEB 2024 to 21 MAR 2024

NW-1, 22 FEB 2024 to 21 MAR 2024



Remain within 10 NM	BKE VOR/DME	6900	BKE

CATEGORY	A	B	C	D
CIRCLING	5200-1¼ 1827 (1900-1¼)	5200-1½ 1827 (1900-1½)	5200-3	1827 (1900-3)

REIL Rwys 13 and 31

MIRL Rwy 13-31

VOR/DME BKE 115.3 Chan 100	APP CRS 118°	Rwy Idg TDZE Apt Elev 5085 3370 3373
--	------------------------	--

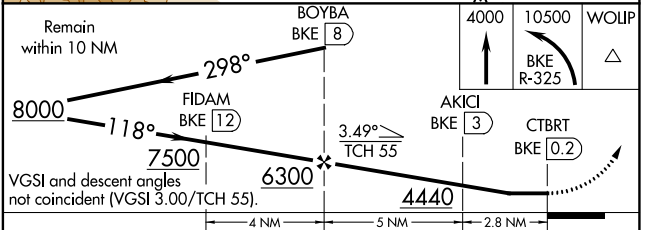
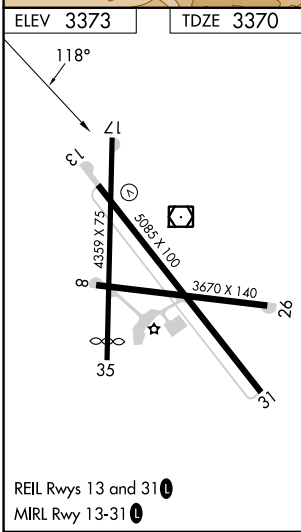
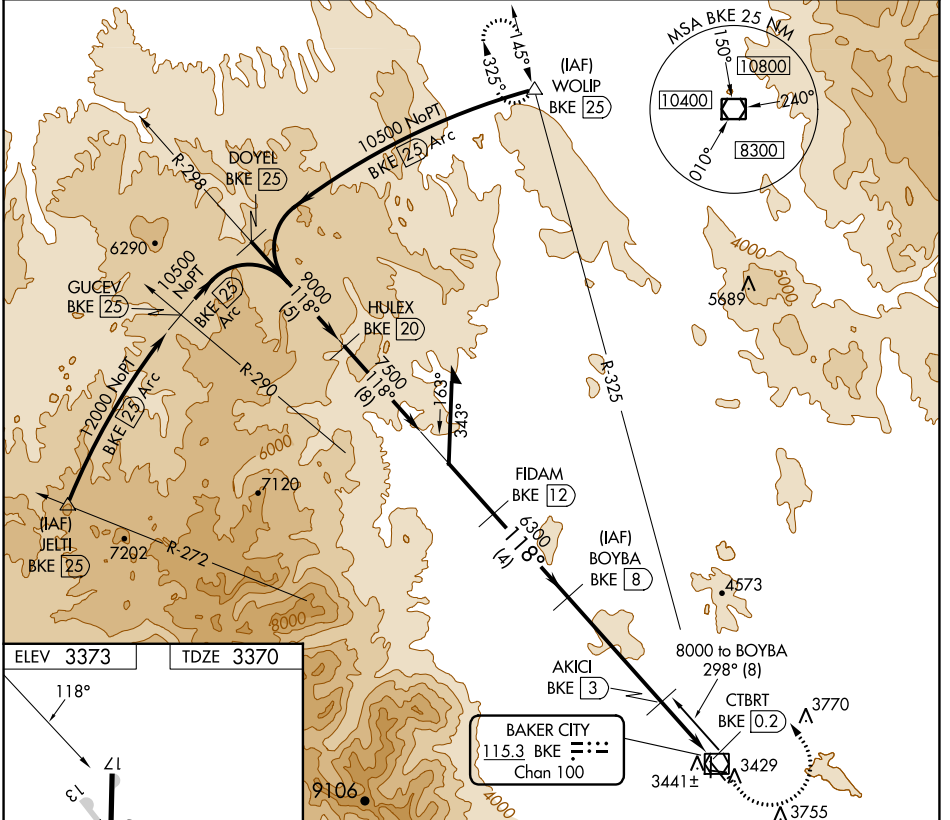
VOR/DME RWY 13

BAKER CITY MUNI (BKE)

⚠ Circling to Rwy 8/17/26/35 NA at night.
⚠ Helicopter visibility reduction below 1 SM NA.

MISSED APPROACH: Climb to 4000 then climbing left turn to 10500 via BKE R-325 to WOLIP and hold.

ASOS 134.275	SALT LAKE CENTER 128.05 306.95	UNICOM 123.0 (CTAF)
------------------------	--	-------------------------------



CATEGORY	A	B	C	D
S-13	4000-1	630 (700-1)	4000-1¾ 630 (700-1¾)	4000-2 630 (700-2)
C CIRCLING	4000-1	627 (700-1)	4560-3 1187 (1200-3)	4720-3 1347 (1400-3)

NW-1, 22 FEB 2024 to 21 MAR 2024

NW-1, 22 FEB 2024 to 21 MAR 2024