

LOC/DME I-BFT 109.75 Chan 34 (Y)	APP CRS 245°	Rwy Idg THRE 6003 Apt Elev 583	24R 5199 583 584	24L 5199 583 584
--	------------------------	--	---	---

ILS or LOC RWY 24R

BURKE LAKEFRONT (BKL)

RADAR or DME required for procedure entry.

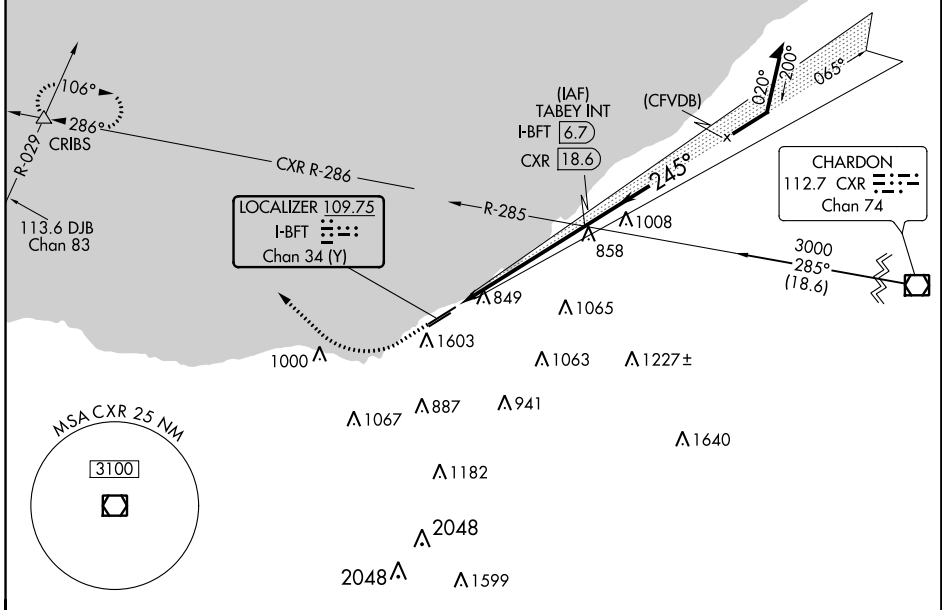
MALS F

MISSED APPROACH: Climb to 1000 then climbing right turn to 2000 on heading 350° to CXR R-286 then climb to 3000 on CXR VOR/DME R-286 to CRIBS INT and hold.

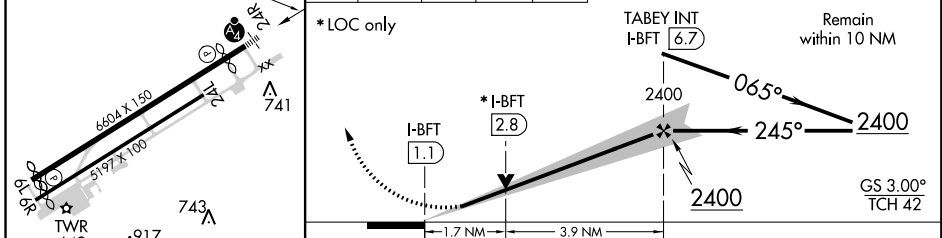
⚠ Circling Rwy 6R NA at night. Rwy 24R helicopter visibility reduction below 3/4 SM NA. Circling NA southeast of Rwy 6R and 24L. S-ILS minimums NA when control tower closed.

❄ -23°C

ATIS 125.25	CLEVELAND APP CON 124.0 354.025	LAKEFRONT TOWER ★ 124.3 (CTAF) 0 339.8	GND CON 121.9 339.8	CLNC DEL 339.8 (when tower closed)	UNICOM 122.95
-----------------------	---	--	-------------------------------	---	-------------------------



ELEV 584	D THRE 24R 583 THRE 24L 583	1000	2000	3000	CRIBS	VGSI and ILS glidepath not coincident (VGSI Angle 3.00/TCH 42).
	245° 5.6 NM from FAF	↑	hdg 350°	CXR R-286	△	



CATEGORY	A	B	C	D
S-ILS 24R	917-3/4 334 (400-3/4)			
S-LOC 24R	1160-3/4	577 (600-3/4)	1160-1 3/8	577 (600-1 3/8)
SIDESTEP 24L	1160-1	577 (600-1)	1160-1 5/8	577 (600-1 5/8)
CIRCLING	1160-1	577 (600-1)	1160-1 5/8	1160-2
			577 (600-1 5/8)	577 (600-2)

EC-2, 11 OCT 2018 to 08 NOV 2018

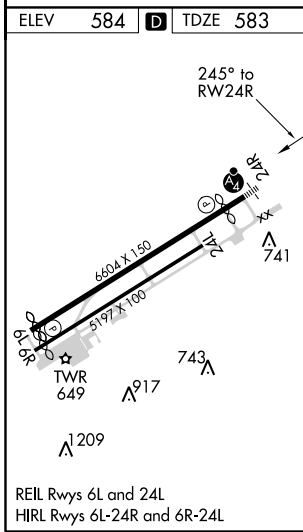
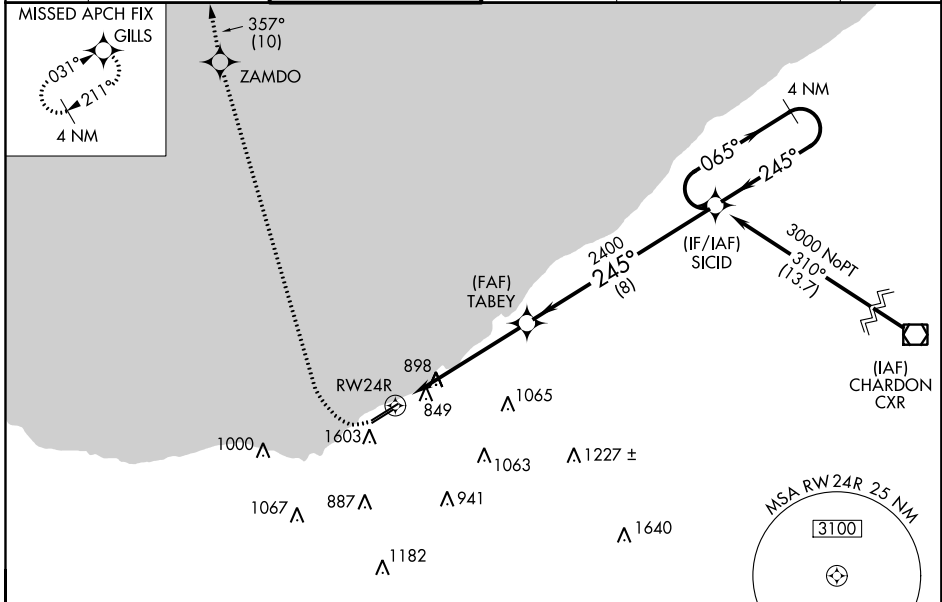
EC-2, 11 OCT 2018 to 08 NOV 2018

WAAS CH 77621 W24A	APP CRS 245°	Rwy Idg TDZE Apt Elev	6003 583 584
--	------------------------	-----------------------------	---

RNAV (GPS) RWY 24R

BURKE LAKEFRONT (BKL)

RNP APCH.		<p>MAVSF</p> <p>For uncompensated Baro-VNAV systems, LNAV/VNAV NA below -16°C (4°F) or above 40°C (104°F). Circling Rwy 6R NA at night. Rwy 24R helicopter visibility reduction below ¾ SM NA. Circling NA southeast of Rwy 6R and 24L. For inop ALS, increase LNAV Cat C and D visibility to 3 SM.</p>		<p>MISSED APPROACH: Climbing right turn to 2000 direct ZAMDO then climb to 4000 on track 357° to GILLS and hold. # Missed approach requires minimum climb of 421 feet per NM to 1900.</p>	
ATIS 125.25	CLEVELAND APP CON 124.0 354.025	LAKEFRONT TOWER ★ 124.3 (CTAF) 0 339.8	GND CON 121.9 339.8	CLNC DEL 339.8 (when tower closed)	UNICOM 122.95



ELEV 584	D	TDZE 583		
<p>2000 ZAMDO 4000 GILLS</p> <p>VGSI and RNAV glidepath not coincident (VGSI Angle 3.00/TCH 42).</p> <p>4 NM Holding Pattern</p> <p>*LNAV only.</p> <p>TABEY</p> <p>*3.1 NM to RWY24R</p> <p>2400</p> <p>245°</p> <p>2400</p> <p>065°</p> <p>3000</p> <p>GP 3.00° TCH 42</p>				
CATEGORY	A	B	C	D
LPV DA	1401-2½		818 (900-2½)	
LPV DA #	NA		1249-1⅞ 666 (700-1⅞)	
LNAV/VNAV DA	1324-2½		741 (800-2½)	
LNAV MDA	1620-1 1037 (1100-1)	1620-1¼ 1037 (1100-1¼)	1620-2½ 1037 (1100-2½)	
CIRCLING	1620-1¼ 1036 (1100-1¼)		1620-3 1036 (1100-3)	

EC-2, 11 OCT 2018 to 08 NOV 2018

EC-2, 11 OCT 2018 to 08 NOV 2018