

WAAS CH <b>53640</b> <b>W17A</b>	APP CRS <b>174°</b>	Rwy ldg <b>6006</b> TDZE <b>111</b> Apt Elev <b>112</b>
--	------------------------	---

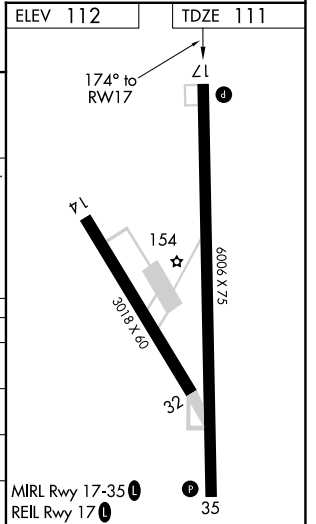
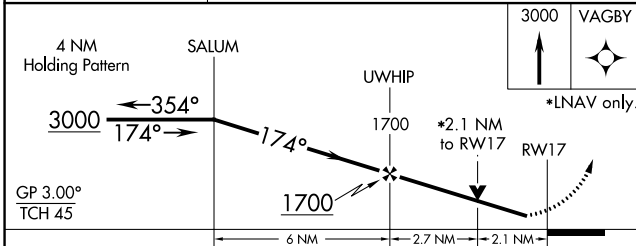
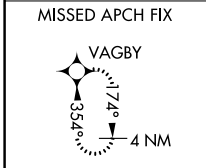
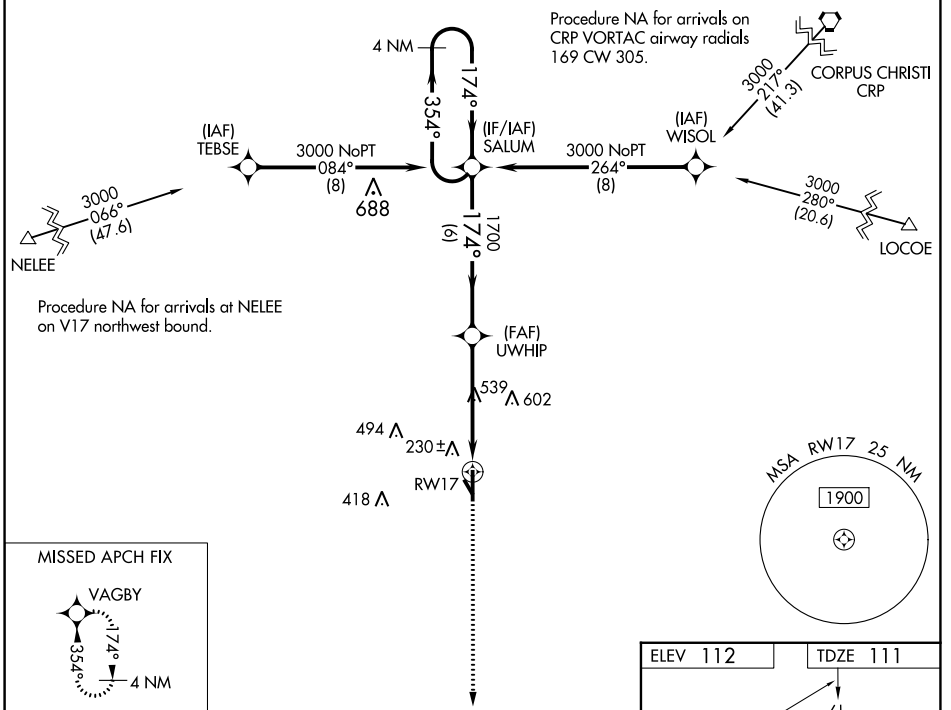
# RNAV (GPS) RWY 17

BROOKS COUNTY (BKS)

**⚠** For uncompensated Baro-VNAV systems, LNAV/VNAV NA below -15°C (5°F) or above 54°C (130°F).  
**⚠** Circling Rwy 14 NA at night. Rwy 17 helicopter visibility reduction below ¾ M NA.  
 DME/DME RNP-0.3 NA. Circling NA for Cat D west of Rwy 17-35.

MISSED APPROACH: Climb to 3000 direct VAGBY and hold.

AWOS-3PT <b>118.125</b>	KINGSVILLE APP CON * <b>119.9 290.45</b>	UNICOM <b>122.8 (CTAF) 0</b>
----------------------------	---	---------------------------------



CATEGORY	A	B	C	D
LPV DA	361-1 250 (300-1)			
LNAV/VNAV DA	361-1 250 (300-1)			
LNAV MDA	840-1 729 (800-1)		840-2 729 (800-2)	
<b>C</b> CIRCLING	840-1 728 (800-1)		940-2½ 828 (900-2½)	940-2¾ 828 (900-2¾)

WAAS CH <b>49140</b> <b>W35A</b>	APP CRS <b>354°</b>	Rwy Idg TDZE <b>112</b> Apt Elev <b>112</b>	<b>6006</b>
--	------------------------	---	-------------

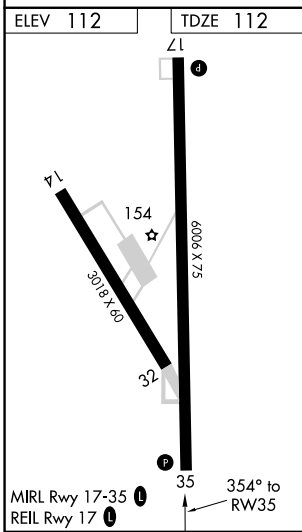
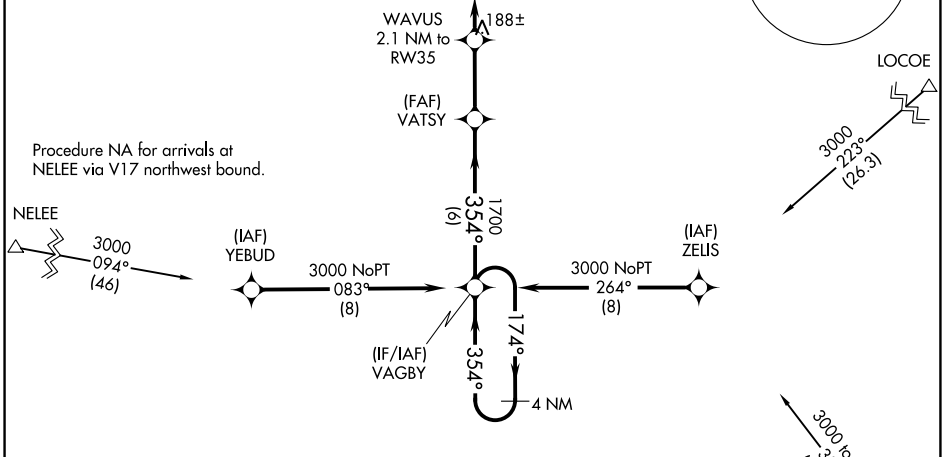
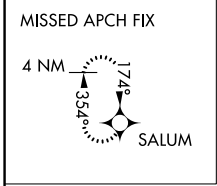
# RNAV (GPS) RWY 35

BROOKS COUNTY (BKS)

**⚠** For uncompensated Baro-VNAV systems, LNAV/VNAV NA below -15°C (5°F) or above 54°C (130°F). Circling Rwy 14 NA at night. DME/DME RNP-0.3 NA.

MISSED APPROACH: Climb to 3000 direct SALUM and hold.

AWOS-3PT <b>118.125</b>	KINGSVILLE APP CON * <b>119.9 290.45</b>	UNICOM <b>122.8</b> (CTAF) <b>0</b>
----------------------------	---	--



3000	SALUM	WAVUS 2.1 NM to RW35	VATSY 1700	VAGBY	4 NM Holding Pattern
*LNAV only. *0.9 NM to RW35		*820	354°	174°	3000
0.9	1.2	2.8 NM	6 NM	GP 3.00° TCH 45	
CATEGORY	A	B	C	D	
LPV DA	362-1		250 (300-1)		
LNAV/VNAV DA	362-1		250 (300-1)		
LNAV MDA	440-1		328 (400-1)		
<b>CIRCLING</b>	580-1 468 (500-1)	680-1 568 (600-1)	940-2½ 828 (900-2½)	940-2¾ 828 (900-2¾)	

SC-3, 22 FEB 2024 to 21 MAR 2024

SC-3, 22 FEB 2024 to 21 MAR 2024