

LOC/DME H-BTV 110.3 Chon 40	APCH CRS 146° Appr Elev 335	Rwy Idg 326 7820
-----------------------------------	-----------------------------------	------------------------

AL-70 (USAF)

PATRICK LEAHY BURLINGTON INTL (KBTV)

TACAN required	ATIS 123.8 269.9	APP CON 121.1 278.8
----------------	---------------------	------------------------

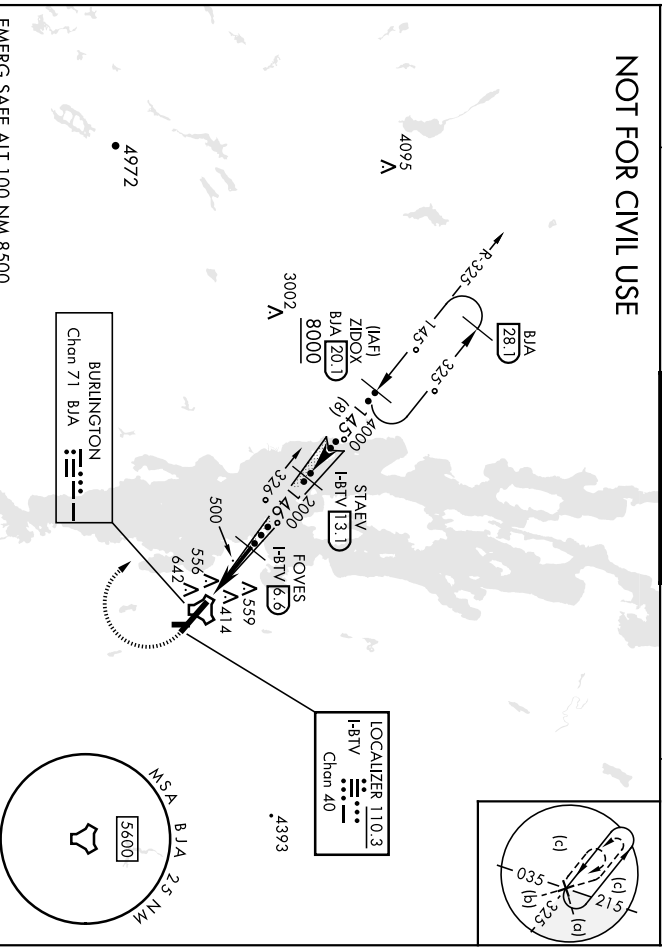


MISSED APPROACH: Climb to 1000, then climbing right turn to 8000 on BIA TACAN R-325 to ZIDOX/BIA 20.1 DME and hold, continue climb-in-hold to 8000.

TOWER * 118.3 (CTAF) 257.8	GND CON 126.3 348.6
-------------------------------	------------------------

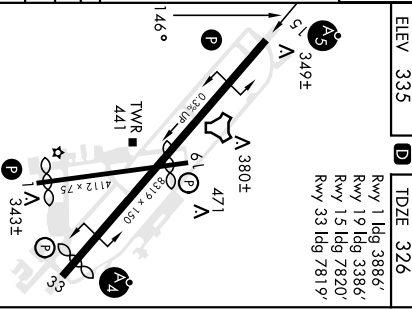
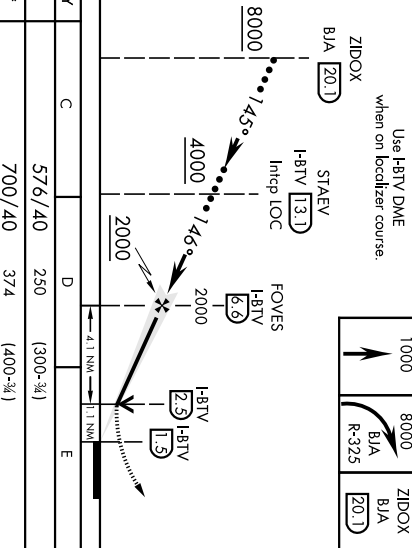
CINC DEL 119.15

NOT FOR CIVIL USE



EMERG SAFE ALT 100 NM 8500

CATEGORY	C	D	E	ELEV 335	D	TDZE 326	
	S-ILS 15	576/40	250				(300-¾)
	S-LOC 15*	700/40	374				(400-¾)
CIRCLING	1220-2¾	1380-3	1500-3	MIRL Rwy 1-19	Rwy 1 Idg 3886'	Rwy 19 Idg 3386'	
	885 (900-2¾)	1045 (1100-3)	1165 (1200-3)	HREL Rwy 15-33			Rwy 15 Idg 7820'



LOC/DME I-VOE Chon 40	APCH CRS 326°	Rwy Idg 781.9
110.3	TDZE 334	APpr Elev 335

AL-70 (USA)F

PATRICK LEAHY BURLINGTON INTL (KBTV)

DME required * When AIS inop, increase CAT DE visibility to 1 1/2 mile.	MAISF A4
--	-------------

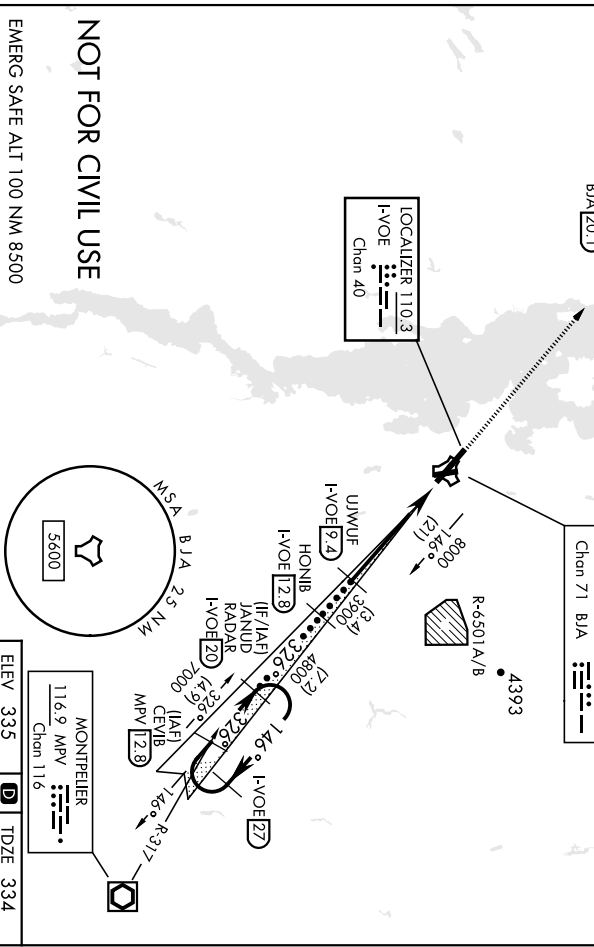
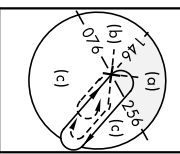
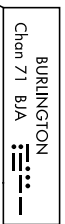
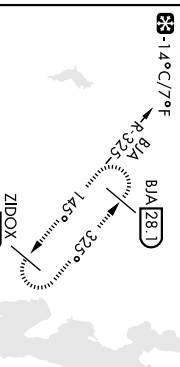
MISSED APPROACH: Climb to 7000 on BJA TACAN R-325 to ZIDOX/BJA 20.1 DME and hold, continue climb-in-hold to 7000.

ATS 123.8 269.9	APP CON 121.1 278.8
--------------------	------------------------

TOWER * 118.3 (CTAF) 0257.8

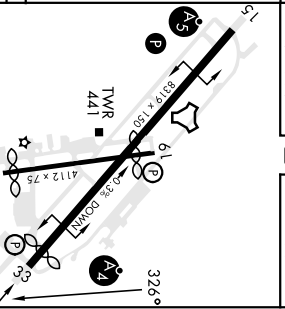
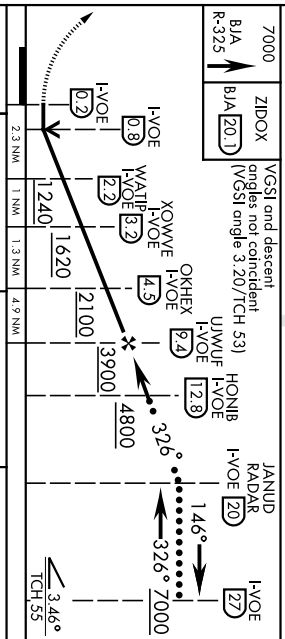
GND CON 126.3 348.6

CINCL DEL 119.15



NOT FOR CIVIL USE

EMERG SAFE ALT 100 NM 8500



CATEGORY	C	D	E
S-LOC 33 *	760/50	426 (500-1)	
CIRCLING	1200-21% 865 (900-21%)	1380-3 1045 (1100-3)	1420-3 1085 (1100-3)

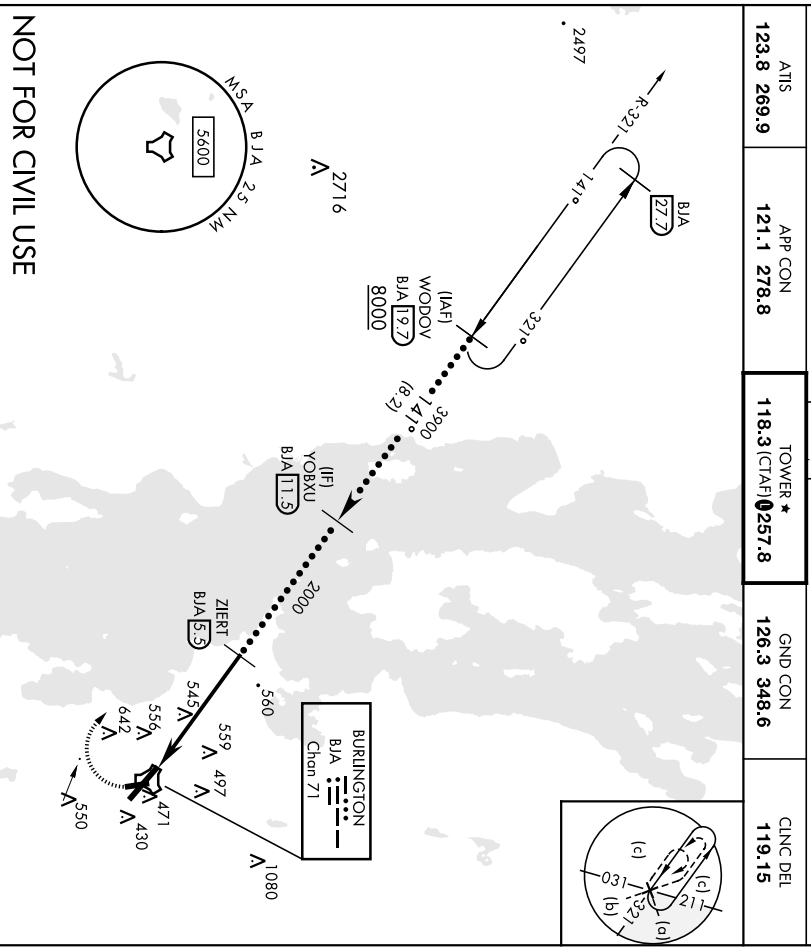
BURLINGTON, VERMONT
 44°28'N-73°09'W PATRICK LEAHY BURLINGTON INTL (KBTV)
 Orig 20JUL17

HI-LOC RWY 33

TACAN BJA Chan 71	APCH CRS 141°	Rwy Idg 7820 TDZE 326 Appt Elev 335	AL-70 (USAF)	PATRICK LEAHY BURLINGTON INTL (KBTV)
<p>▲ * When AIS Inop, increase CAT CDE vis to 1 3/8 mile.</p>		<p>MAISR MISSED APPROACH: Climbing tight turn to 8000 on BJA R-321 to WODOV / BJA 19.7 DME and hold, continue climb-in-hold to 8000.</p>		
AITS 123.8 269.9	APP CON 121.1 278.8	TOWER * 118.3 (CTAF) 1257.8	GND CON 126.3 348.6	CINCL DEL 119.15

NOT FOR CIVIL USE
EMERG SAFE ALT 100 NM 8500

ELEV 335 **D** IDZE 326



WODOV [19.7]	8000	BJA R-321	WODOV [19.7]	ELEV 335	D	IDZE 326
YOBXU [17.5]	3900	ZIERT [5.5]	ZIERT [5.5]	349		Rwy 1 Idg 3386'
			ZIBVO [0.5]			Rwy 19 Idg 3386'
						Rwy 15 Idg 7820'
						Rwy 33 Idg 7819'
3.05° TCH 51						
CATEGORY	C	D	E			
S-15*	820/50	494	(500-1)			
CIRCLING	1220-234 885 (900-234)	1380-3 1045 (1100-3)	1500-3 1165 (1200-3)			
				MIRL Rwy 1-19		
				HIRL Rwy 15-33		

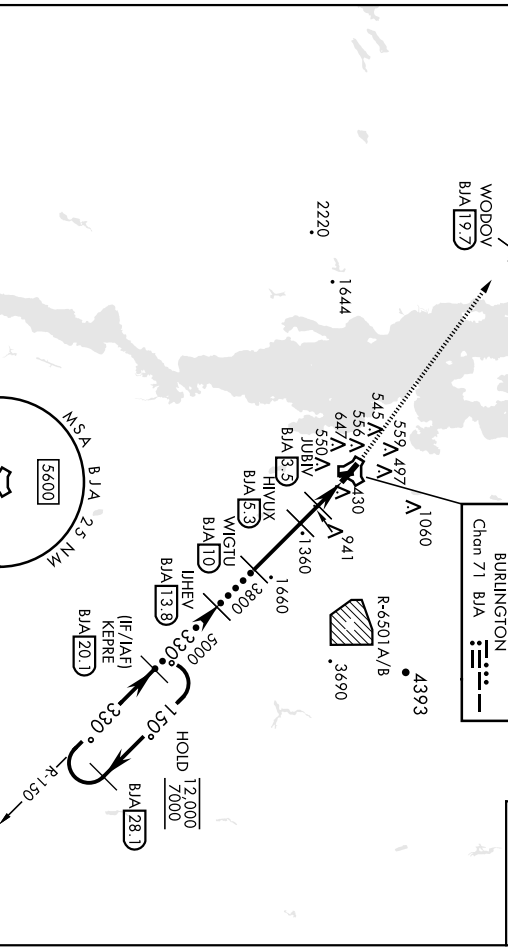
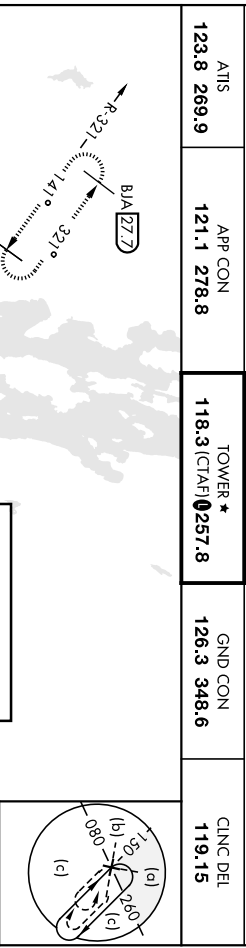
BURLINGTON, VERMONT 44°28'N-73°09'W PATRICK LEAHY BURLINGTON INTL (KBTV)
Orig-A 04NOV21

HI-TACAN RWY 15

BURLINGTON, VERMONT

HI-TACAN RWY 33
23278

TACAN BIA Chan 71	APCH CRS 330°	Rwy Idg 781.9	TDZE 334	Appt Elev 335
ATIS 123.8 269.9	APP CON 121.1 278.8	TOWER * 118.3 (CTAF)	GND CON 126.3 348.6	CINC DEL 119.15
MAISF MISSED APPROACH: Climb to 8000 on BIA TACAN R-321 to WODOV/BIA 19.7 DME and hold, continue climb-in-hold to 8000.				

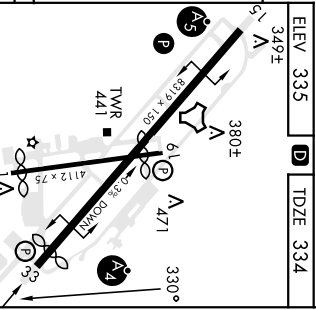


NOT FOR CIVIL USE

EMERG SAFE ALT 100 NM 8500

8000 WODOV BJA [197]	VGSI and descent angles not coincident (VGSI Angle 3.20°/TCH 53)	KEPPE [201]	[281]
TACAN ZOKOD [09]	JUBIV [35]	HWUX [E3]	WIGTU [10]
1360	2040	3800	5000
2.6 NM	1.8 NM	4.8 NM	
3.30°	3.30°	1.50°	12000
			7000
			TCH 53
			3.50°

CATEGORY	C	D	E
S-33	1200-2 1/2	866	(900-2 1/2)
◻ CIRCLING	1220-2 3/4 885 (900-2 3/4)	1380-3 1045 (1100-3)	1500-3 1145 (1200-3)



BURLINGTON, VERMONT 44°28'N-73°09'W PATRICK LEAHY BURLINGTON INTL (KBTV)
Orig-A 04NOV21

HI-TACAN RWY 33




LOC/DME I-BTV 110.3 Chan 40	APP CRS 146°	Rwy ldg TDZE Apt Elev 7820 326 335
---	------------------------	--

ILS or LOC RWY 15

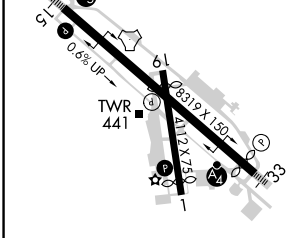
PATRICK LEAHY BURLINGTON INTL (BTV)

RNP APCH - GPS, DME or RADAR required for LOC only.

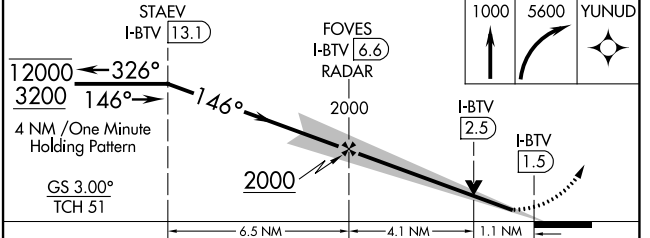
⚠ Rwy 15 helicopter visibility reduction below $\frac{3}{4}$ SM NA.
⚠ For inop ALS, increase S-LOC 15 all Cats visibility to RVR 5500.
⚠ Inop table does not apply to S-ILS 15.

MALS  MISSED APPROACH: Climb to 1000 then climbing right turn to 5600 direct YUNUD and hold, continue climb-in-hold to 5600.

ATIS 123.8 269.9	BURLINGTON APP CON * 121.1 278.8	BURLINGTON TOWER * 118.3 (CTAF) 257.8	GND CON 126.3 348.6	CLNC DEL 119.15	UNICOM 122.95
----------------------------	--	---	-------------------------------	---------------------------	-------------------------



ELEV 335	D	TDZE 326			
<p>MIRL Rwy 1-19 Ⓛ HIRL Rwy 15-33 Ⓛ</p> <p>FAF to MAP 5.2 NM</p>					
Knots	60	90	120	150	180
Min:Sec	5:12	3:28	2:36	2:05	1:44



CATEGORY	A	B	C	D	E
S-ILS 15		576/40	250 (300- $\frac{3}{4}$)		
S-LOC 15		700/40	374 (400- $\frac{3}{4}$)		
C CIRCLING	840-1 505 (600-1)	860-1 525 (600-1)	1220-2 $\frac{3}{4}$ 885 (900-2 $\frac{3}{4}$)	1400-3 1065 (1100-3)	1460-3 1125 (1200-3)

NE-1, 22 FEB 2024 to 21 MAR 2024

NE-1, 22 FEB 2024 to 21 MAR 2024

LOC/DME I-VOE 110.3 Chan 40	APP CRS 326°	Rwy Idg TDZE Apt Elev	7819 334 335
--	------------------------	-----------------------------	---

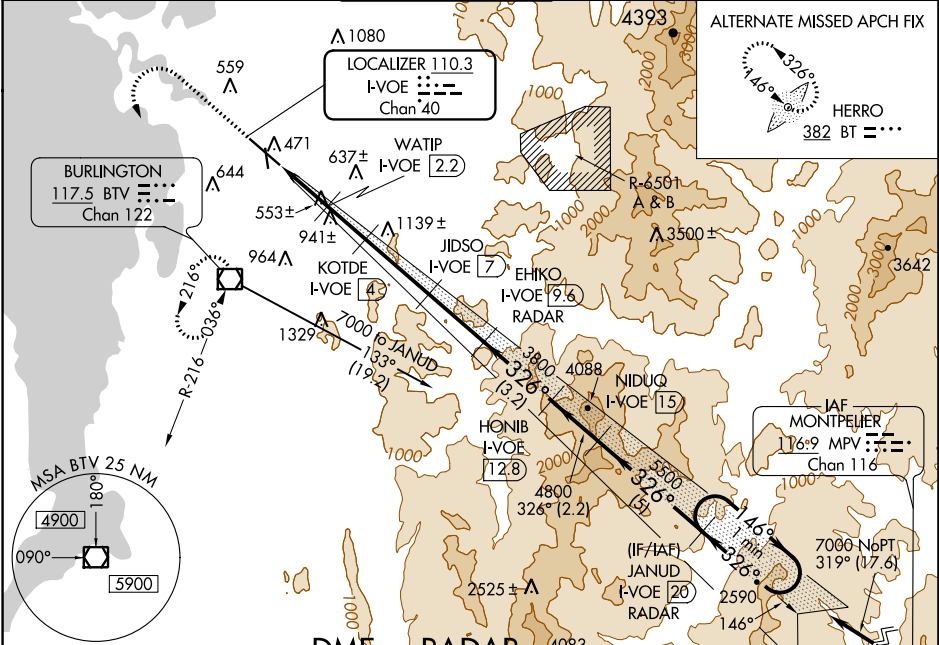
ILS or LOC/DME RWY 33

PATRICK LEAHY BURLINGTON INTL (BTV)

⚠ Circling to Rwy 1 NA at night. For inop ALS, increase S-ILS 33 Cat A/B visibility to RVR 4500 and S-LOC 33 Cat E to 2 SM. Rwy 33 helicopter visibility reduction below RVR 4000 NA.
❄ -10°C Autopilot coupled approaches NA.

MALSF MISSED APPROACH: Climb to 1200 then climbing left turn to 2800 direct BTV VOR/DME and hold, continue climb-in-hold to 2800.

ATIS 123.8 269.9	BURLINGTON APP CON * 121.1 278.8	BURLINGTON TOWER * 118.3 (CTAF) 0 257.8	GND CON 126.3 348.6	CLNC DEL 119.15	UNICOM 122.95
----------------------------	--	---	-------------------------------	---------------------------	-------------------------

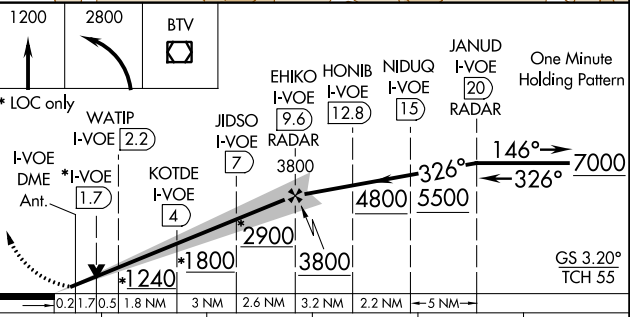
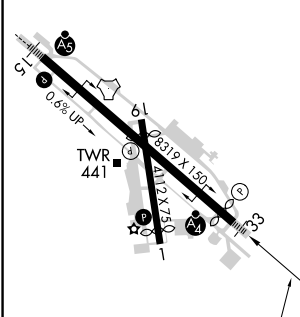


NE-1, 22 FEB 2024 to 21 MAR 2024

NE-1, 22 FEB 2024 to 21 MAR 2024

ELEV 335	D	TDZE 334
----------	----------	----------

DME or RADAR REQUIRED



CATEGORY	A	B	C	D	E
S-ILS 33	608/40	274 (300-¾)	608/50	274 (300-1)	NA
S-LOC 33	1020/40	686 (700-¾)	1020-1¾	686 (700-1¾)	
C CIRCLING	1020-1	685 (700-1)	1220-2¾ 885 (900-2¾)	1380-3	1045 (1100-3)

WAAS CH 58044 W01A	APP CRS 006°	Rwy Idg TDZE 334 Apt Elev 335
--	------------------------	---

RNAV (GPS) RWY 1

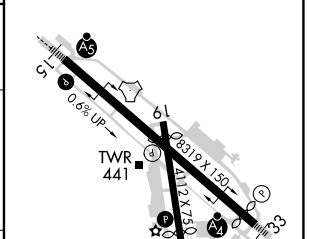
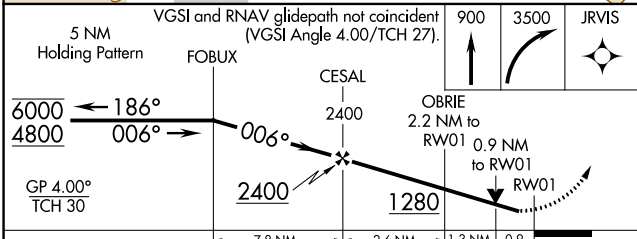
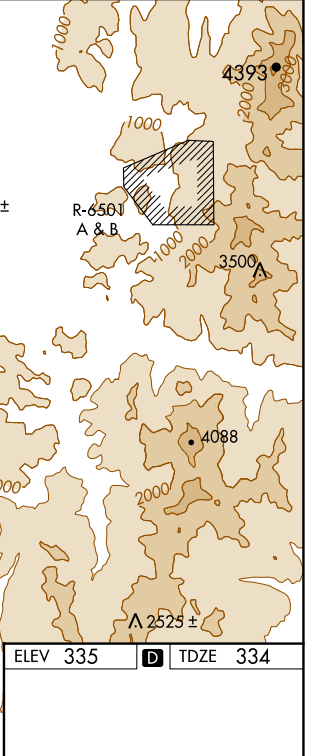
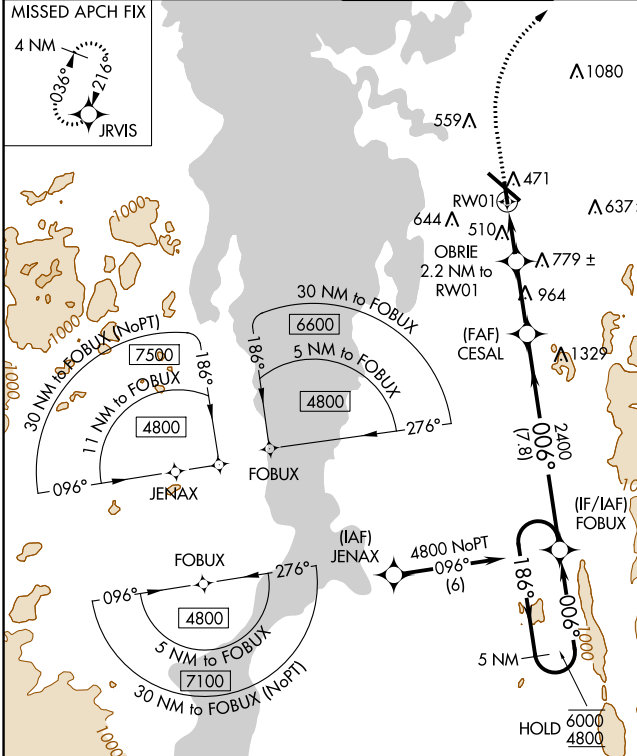
PATRICK LEAHY BURLINGTON INTL (BTV)

RNP APCH - GPS.

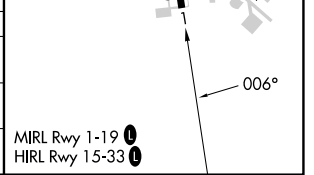
-10°C Rwy 1 helicopter visibility reduction below 3/4 SM NA.

MISSED APPROACH: Climb to 900 then climbing right turn to 3500 direct JRVIS and hold, continue climb-in-hold to 3500.

ATIS 123.8 269.9	BURLINGTON APP CON * 121.1 278.8	BURLINGTON TOWER * 118.3 (CTAF) 0 257.8	GND CON 126.3 348.6	CINC DEL 119.15	UNICOM 122.95
----------------------------	--	---	-------------------------------	---------------------------	-------------------------



CATEGORY	A	B	C	D
LPV DA	661-1	327 (400-1)		NA
LNAV MDA	760-1	426 (500-1)		NA
CIRCLING	840-1 505 (600-1)	860-1 525 (600-1)		NA



NE-1, 22 FEB 2024 to 21 MAR 2024

NE-1, 22 FEB 2024 to 21 MAR 2024

WAAS CH 72736 W15A	APP CRS 146°	Rwy Idg TDZE Apt Elev	7820 326 335
--	------------------------	-----------------------------	---

RNAV (GPS) RWY 15

PATRICK LEAHY BURLINGTON INTL (BTV)

RNP APCH - GPS.

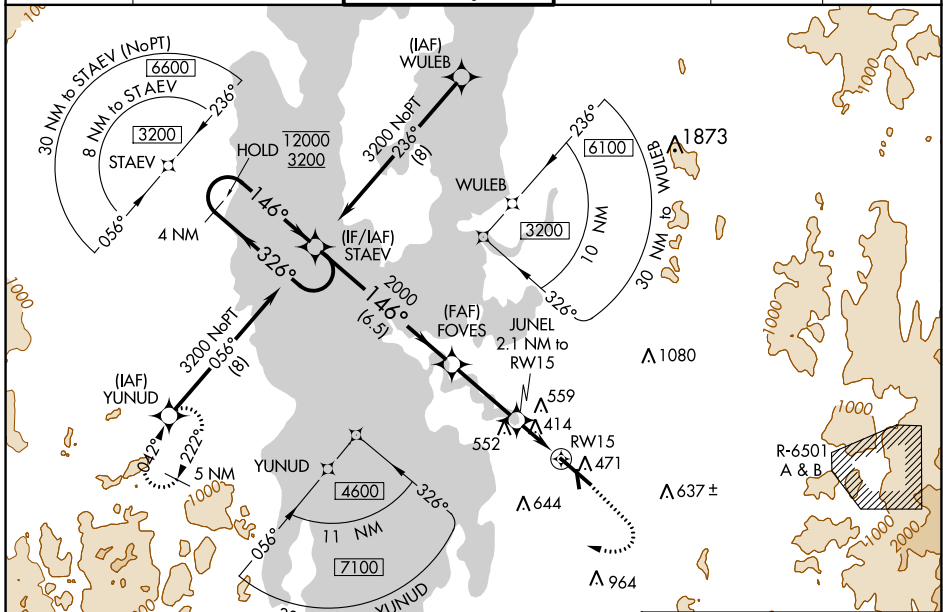
⚠ Circling Rwy 1 NA at night. Rwy 15 helicopter visibility reduction below RVR 4000 NA. Inop table does not apply to LPV. For uncompensated Baro-VNAV systems, LNAV/VNAV NA below -22°C or above 54°C. For inop ALS, increase LNAV/VNAV all Cats visibility to RVR 4500 and LNAV all Cats visibility to RVR 5500.

MALSR



MISSED APPROACH: Climb to 1000 then climbing right turn to 5600 direct YUNUD and hold, continue climb-in-hold to 5600.

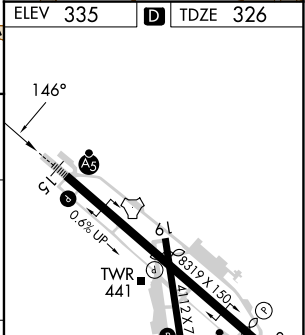
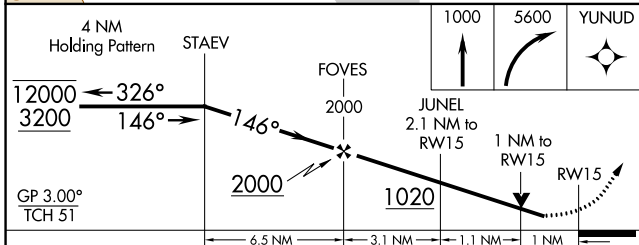
ATIS 123.8 269.9	BURLINGTON APP CON * 121.1 278.8	BURLINGTON TOWER * 118.3 (CTAF) 257.8	GND CON 126.3 348.6	CLNC DEL 119.15	UNICOM 122.95
----------------------------	--	---	-------------------------------	---------------------------	-------------------------



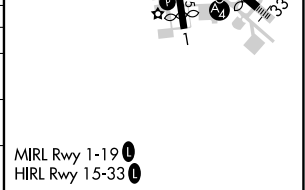
NE-1, 22 FEB 2024 to 21 MAR 2024

NE-1, 22 FEB 2024 to 21 MAR 2024

ELEV 335	D TDZE 326
----------	-------------------



CATEGORY	A	B	C	D
LPV DA		576/40	250 (300-¾)	
LNAV/VNAV DA		645/40	319 (400-¾)	
LNAV MDA		680/40	354 (400-¾)	
C CIRCLING	840-1 505 (600-1)	860-1 525 (600-1)	1220-2¾ 885 (900-2¾)	1380-3 1045 (1100-3)



APP CRS	Rwy Idg	7819
311°	TDZE	334
	Apt Elev	335

RNAV (GPS) Y RWY 33

PATRICK LEAHY BURLINGTON INTL (BTV)

RNP APCH.

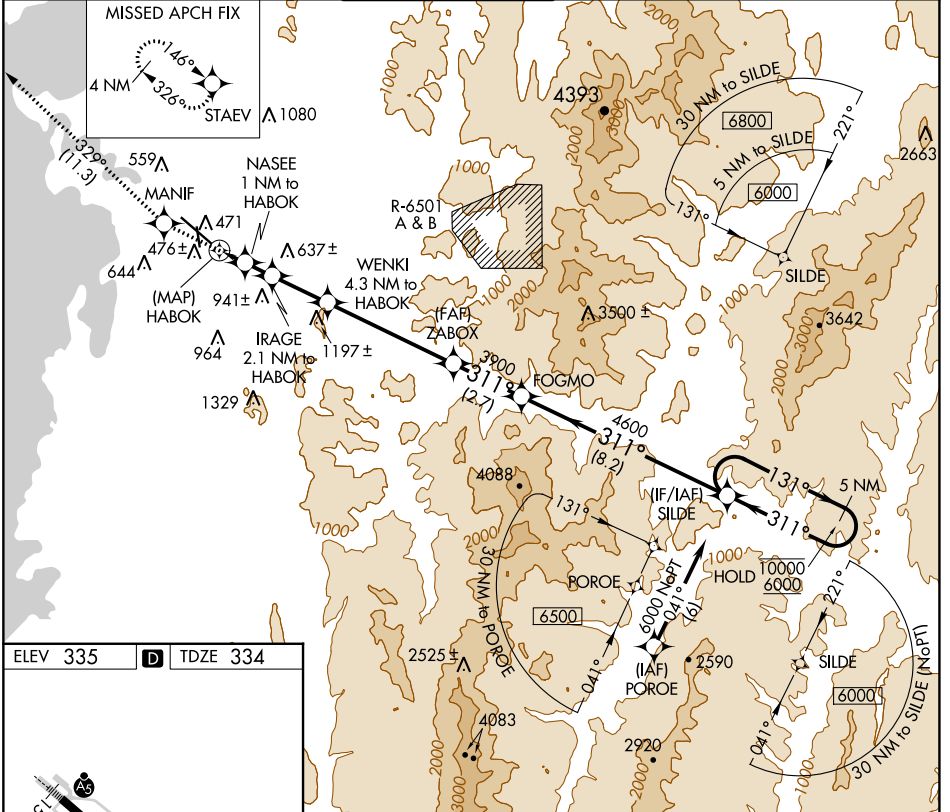
⚠ Circling Rwy 1 NA at night.
⚠ Rwy 33 helicopter visibility reduction below 3/4 SM NA.
⚠ -10°C For inop ALS, increase LNAV Cat C visibility to RVR 6000.

MALSF



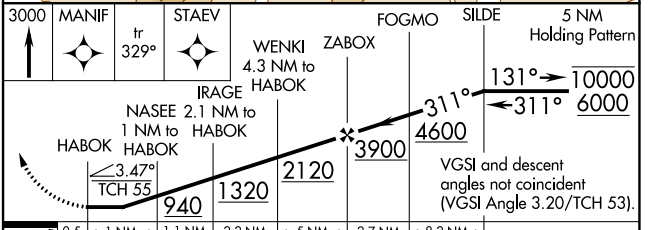
MISSED APPROACH: Climb to 3000 direct MANIF and on track 329° to STAEV and hold.

ATIS	BURLINGTON APP CON *	BURLINGTON TOWER *	GND CON	CLNC DEL	UNICOM
123.8 269.9	121.1 278.8	118.3 (CTAF) 0 257.8	126.3 348.6	119.15	122.95



ELEV 335 **D** TDZE 334

MIRL Rwy 1-19 **Ⓛ**
 HIRL Rwy 15-33 **Ⓛ**



CATEGORY	A	B	C	D	E
LNAV MDA	740/40	406 (500-3/4)	740/50 406 (500-1)	740/60	406 (500-1 1/4)
C CIRCLING	840-1 505 (600-1)	860-1 525 (600-1)	1200-2 1/2 865 (900-1 1/2)	1380-3 1045 (1100-3)	1500-3 1165 (1200-3)

NE-1, 22 FEB 2024 to 21 MAR 2024

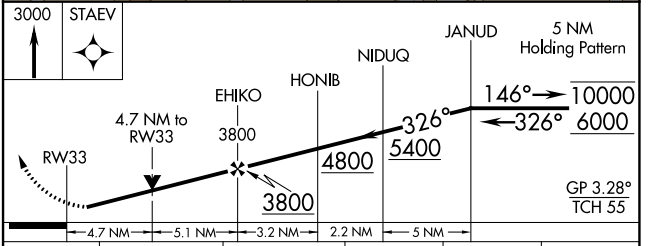
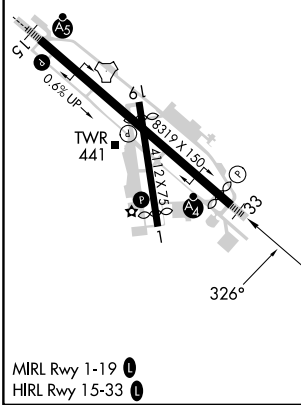
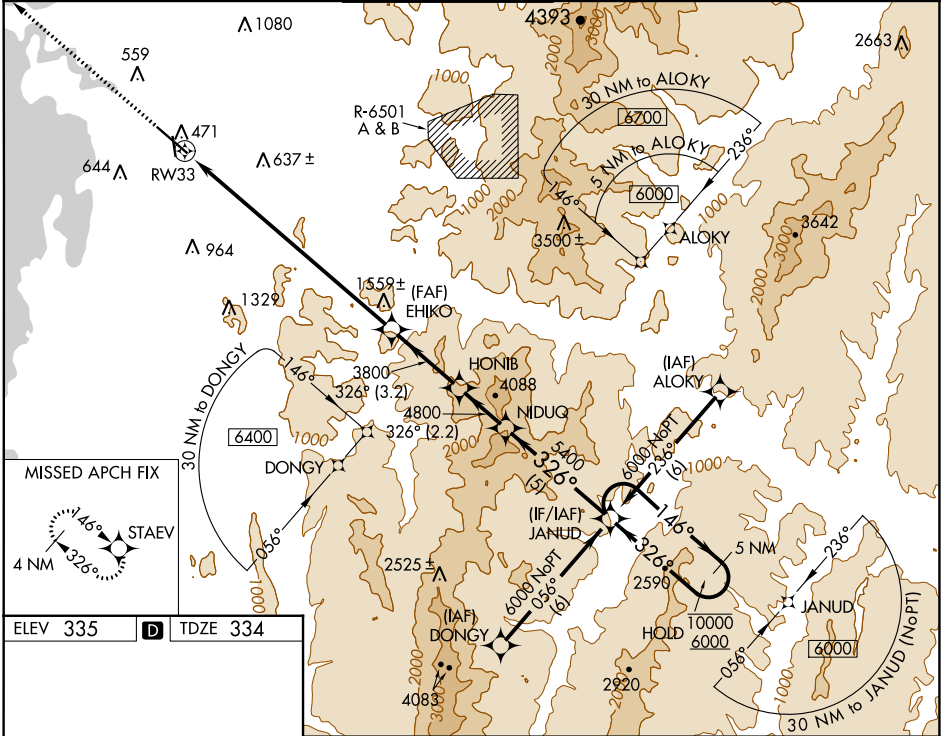
NE-1, 22 FEB 2024 to 21 MAR 2024

WAAS CH 65812 W33A	APP CRS 326°	Rwy Idg 7819 TDZE 334 Apt Elev 335
--	------------------------	---

RNAV (GPS) Z RWY 33

PATRICK LEAHY BURLINGTON INTL (BTV)

RNP APCH - GPS.		MALSF		MISSED APPROACH: Climb to 3000 direct STAEV and hold.	
<p>▼ Inop table does not apply. For uncompensated Baro-VNAV systems, LNAV/VNAV NA below -15°C or above 54°C.</p> <p>⚠ -10°C Rwy 33 helicopter visibility reduction below ¾ SM NA.</p>					
ATIS 123.8 269.9	BURLINGTON APP CON * 121.1 278.8	BURLINGTON TOWER * 118.3 (CTAF) 0 257.8	GND CON 126.3 348.6	CLNC DEL 119.15	UNICOM 122.95



CATEGORY	A	B	C	D	E
LPV DA		584/40	250 (300-¾)		
LNAV/VNAV DA		1782-5	1448 (1500-5)		
LNAV MDA	2000-1¼	1666 (1700-1¼)		2000-3	1666 (1700-3)

NE-1, 22 FEB 2024 to 21 MAR 2024

NE-1, 22 FEB 2024 to 21 MAR 2024

VOR/DME BTV 117.5 Chan 122	APP CRS 036°	Rwy Idg TDZE 334 Apt Elev 335	3386
--	------------------------	---	-------------

VOR RWY 1

PATRICK LEAHY BURLINGTON INTL (BTV)

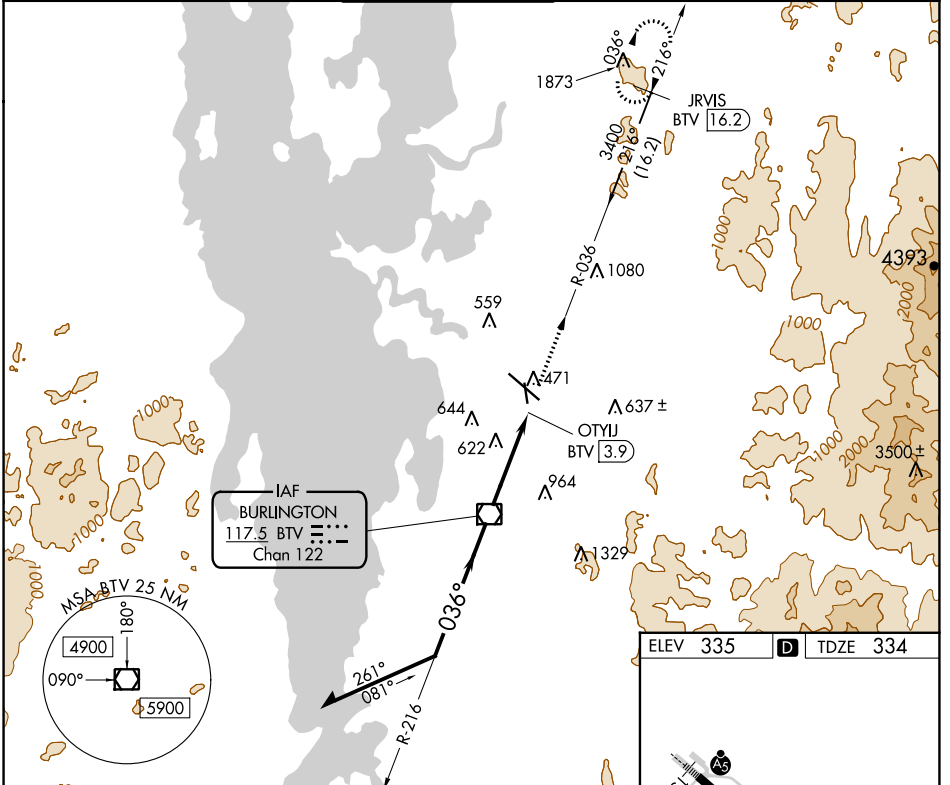
DME required.

▼
▲
⊠ -10°C

Rwy 1 helicopter visibility reduction below 1 SM NA.
Straight-in and Circling Rwy 1 NA at night.

MISSED APPROACH: Climb to 3400 on BTV VOR/DME R-036 to JRVIS 16.2 DME and hold.

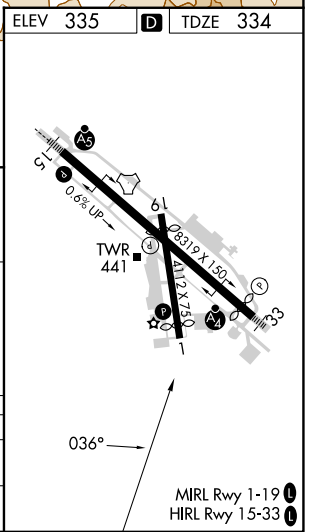
ATIS 123.8 269.9	BURLINGTON APP CON * 121.1 278.8	BURLINGTON TOWER * 118.3 (CTAF) 257.8	GND CON 126.3 348.6	CLNC DEL 119.15	UNICOM 122.95
----------------------------	--	---	-------------------------------	---------------------------	-------------------------



NE-1, 22 FEB 2024 to 21 MAR 2024

NE-1, 22 FEB 2024 to 21 MAR 2024

Remain within 10 NM	BTV VOR/DME		3400	JRVIS BTV 16.2
	216°	036°	BTV R-036	
VGSI and descent angles not coincident (VGSI Angle 4.00/TCH 27).	2800	1700	3.00°	OTYIJ BTV 3.9
			TCH 40	
			3.9 NM	0.4
CATEGORY	A	B	C	D
S-1	880-1	546 (600-1)	880-1½ 546 (600-1½)	NA
C CIRCLING	880-1	545 (600-1)	1200-2½ 865 (900-2½)	1380-3 1045 (1100-3)



VOR RWY 1