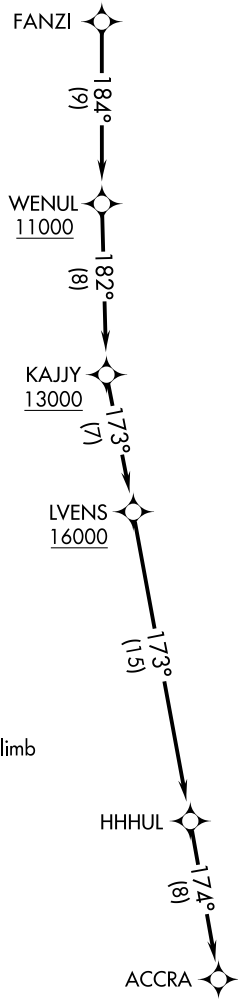


AWOS-3
125.275
MILWAUKEE DEP CON
135.875 307.0

**TOP ALTITUDE:
ASSIGNED BY ATC**



TAKEOFF MINIMUMS

Rwys 1, 19: NA - Environmental.
Rwy 11: Standard.
Rwy 29: 300-1 or standard with minimum climb of 325' per NM to 1000.

- NOTE: RNAV 1.
- NOTE: GPS or DME/DME/IRU required.
- NOTE: RADAR required.
- NOTE: Turbojet aircraft maintain 250K until advised by ATC.
- NOTE: Advise ATC if unable to comply with crossing restrictions.

NOTE: Chart not to scale.



DEPARTURE ROUTE DESCRIPTION

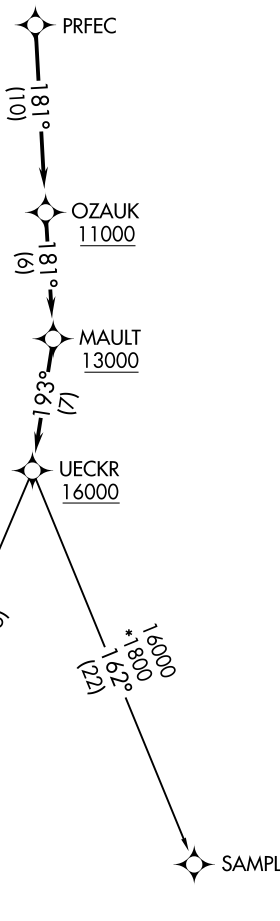
Climb on assigned heading for RADAR vectors to FANZI, thence. . . .
. . . .on track 184° to cross WENUL at or above 11000, then on track 182° to cross KAJJY at or above 13000, then on track 173° to cross LVENS at or above 16000, then on track 173° to HHHUL, then on track 174° to ACCRA. Maintain ATC assigned altitude, expect filed altitude ten minutes after departure.

EC-3: 05 DEC 2019 to 02 JAN 2020

EC-3: 05 DEC 2019 to 02 JAN 2020

AWOS-3
125.275
MILWAUKEE DEP CON
135.875 307.0

**TOP ALTITUDE:
ASSIGNED BY ATC**



TAKEOFF MINIMUMS

Rwys 1, 19: NA - Environmental.
Rwy 11: Standard.
Rwy 29: 300-1 or standard with a minimum climb of 325' per NM to 1000.

- NOTE: RNAV 1.
- NOTE: GPS or DME/DME/IRU required.
- NOTE: RADAR required.
- NOTE: Turbojet aircraft maintain 250K until advised by ATC.
- NOTE: Notify ATC if unable to comply with crossing restrictions.

NOTE: Chart not to scale.

DEPARTURE ROUTE DESCRIPTION

Climb on assigned heading for RADAR vectors to PRFEC, thence. . . .
. . . .on track 181° to cross OZAUK at or above 11000, then on track 181° to cross MAULT at or above 13000, then on track 193° to cross UECKR at or above 16000, then on (transition).
Maintain ATC assigned altitude, expect filed altitude ten minutes after departure.

- DELHI TRANSITION (UECKR5.DELHI)
- SAMPL TRANSITION (UECKR5.SAMPL)