

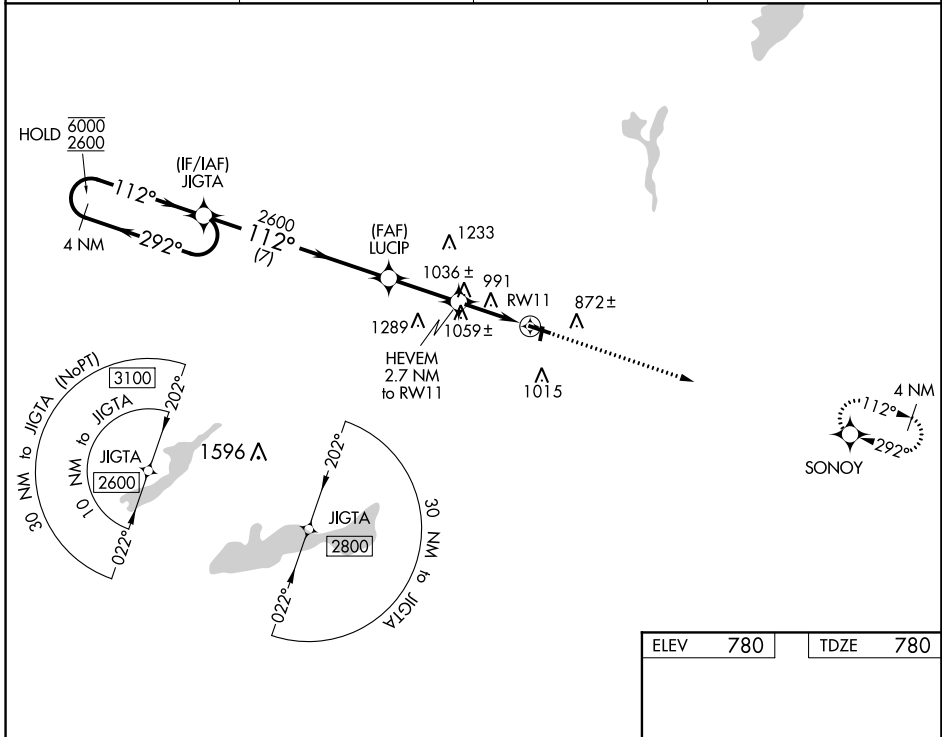
WAAS CH <b>90134</b> <b>W11A</b>	APP CRS <b>112°</b>	Rwy Idg TDZE Apt Elev	<b>4300</b> <b>780</b> <b>780</b>
--	------------------------	-----------------------------	---

# RNAV (GPS) RWY 11

BURLINGTON MUNI (BUU)

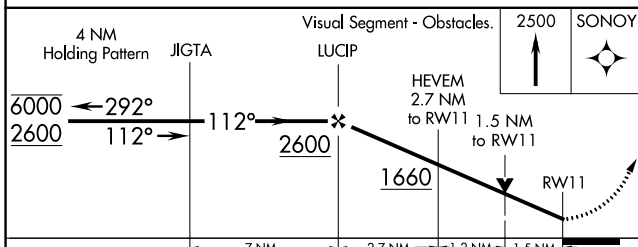
RNP APCH.	MISSED APPROACH: Climb to 2500 direct SONOY and hold.
<p>▼ Circling NA to Rws 1 and 19. Circling Rwy 29 NA at night.</p> <p>▲ Rwy 11 helicopter visibility reduction below 3/4 SM NA.</p>	

AWOS-3 <b>125.275</b>	MILWAUKEE APP CON <b>135.875 307.0</b>	GCO <b>121.725</b>	UNICOM <b>123.05</b> (CTAF) <b>0</b>
--------------------------	---	-----------------------	---

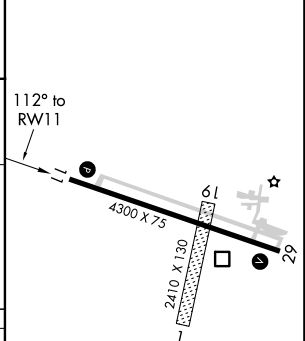


EC-3, 05 DEC 2019 to 02 JAN 2020

EC-3, 05 DEC 2019 to 02 JAN 2020



ELEV	780	TDZE	780
------	-----	------	-----



CATEGORY	A	B	C	D
LP MDA	1300-1	520 (600-1)	1300-1½	520 (600-1½)
LNAV MDA	1320-1	540 (600-1)	1320-1⅝	540 (600-1⅝)
<b>CIRCLING</b>	1320-1 540 (600-1)	1380-1 600 (600-1)	1380-1⅝ 600 (600-1⅝)	1560-2½ 780 (800-2½)

MIRL Rwy 11-29 **0**  
REIL Rws 11 and 29 **0**

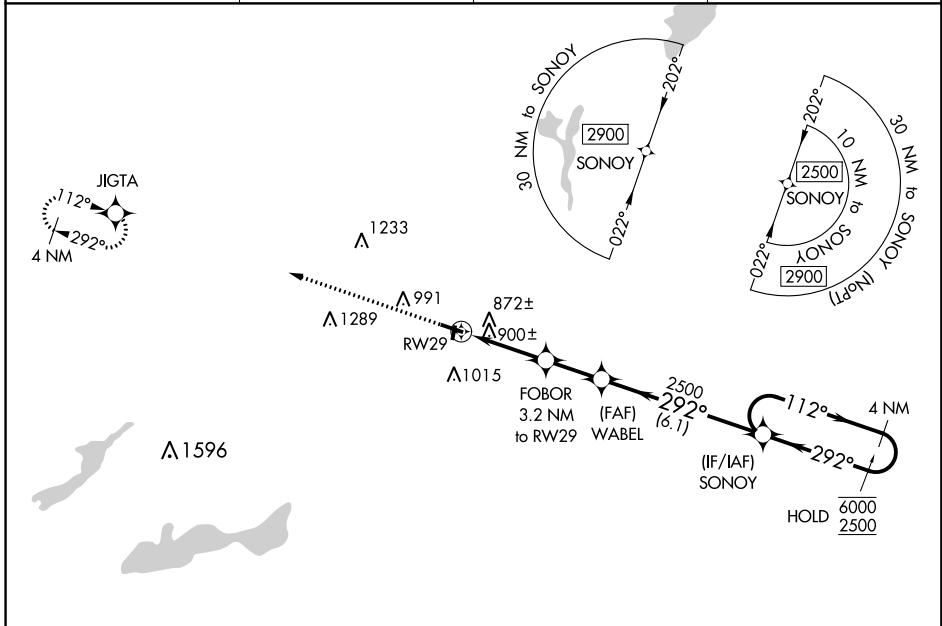
WAAS CH <b>82732</b> <b>W29A</b>	APP CRS <b>292°</b>	Rwy Idg TDZE Apt Elev	<b>4300</b> <b>780</b> <b>780</b>
--	------------------------	-----------------------------	---

# RNAV (GPS) RWY 29

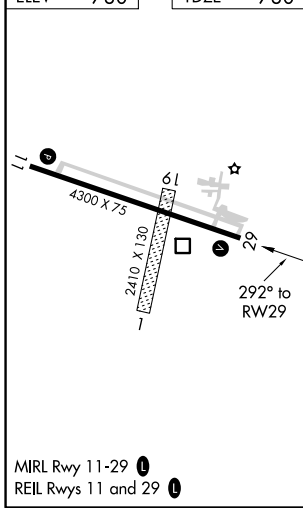
BURLINGTON MUNI (BUU)

RNP APCH.	MISSED APPROACH: Climb to 2600 direct JIGTA and hold.
<b>⚠</b> Circling NA to Rwy 1 and 19. Rwy 29 helicopter visibility reduction below 1 SM NA. Straight-in and Circling Rwy 29 NA at night.	

AWOS-3 <b>125.275</b>	MILWAUKEE APP CON <b>135.875 307.0</b>	GCO <b>121.725</b>	UNICOM <b>123.05 (CTAF) 0</b>
--------------------------	---	-----------------------	----------------------------------



ELEV <b>780</b>	TDZE <b>780</b>
-----------------	-----------------



2600	JIGTA	Visual Segment - Obstacles.		SONYO 4 NM Holding Pattern
↑	⬠	FOBOR 3.2 NM to RW29	WABEL	SONYO
		1820	2500	6000 / 2500
		3.2 NM	2.1 NM	6.1 NM
CATEGORY	A	B	C	D
LP MDA	1160-1	380 (400-1)	1160-1½	380 (400-1½)
LNAV MDA	1280-1	500 (500-1)	1280-1¾	500 (500-1¾)
<b>C</b> CIRCLING	1300-1 520 (600-1)	1380-1 600 (600-1)	1380-1½ 600 (600-1½)	1560-2½ 780 (800-2½)

EC-3, 05 DEC 2019 to 02 JAN 2020

EC-3, 05 DEC 2019 to 02 JAN 2020

VOR/DME BAE	APP CRS	Rwy ldg TDZE	N/A
<b>116.4</b>	<b>180°</b>		<b>N/A</b>
Chan <b>111</b>		Apt Elev	<b>780</b>

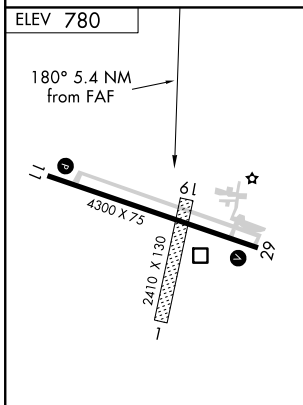
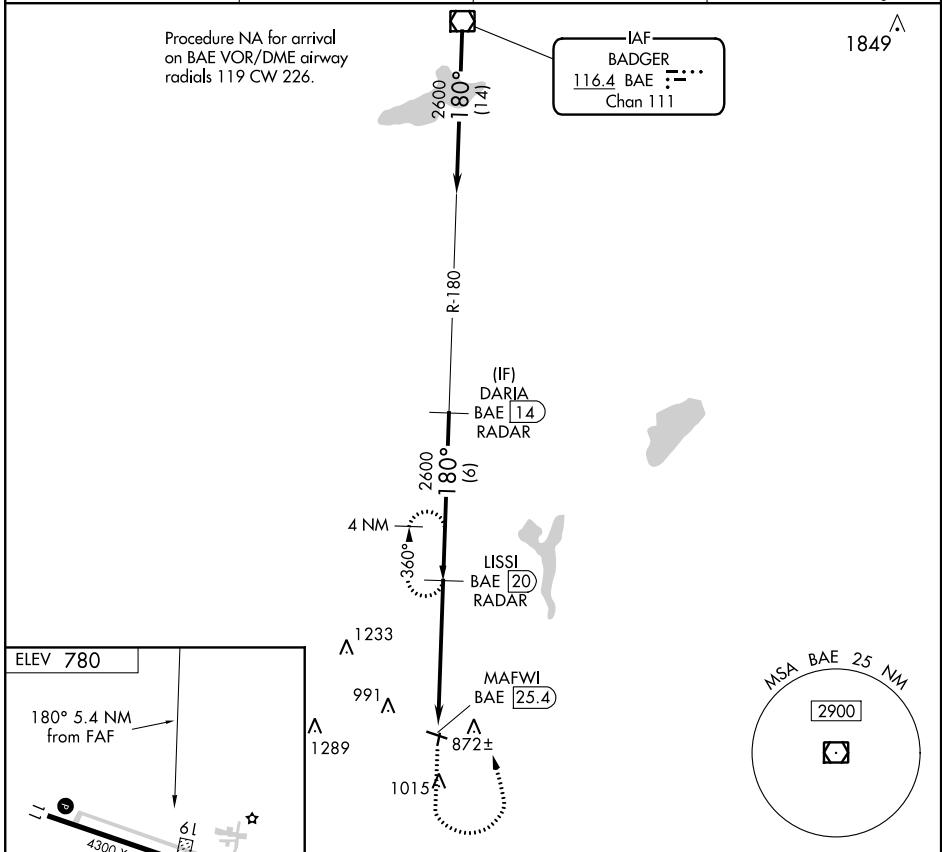
**VOR-A**  
BURLINGTON MUNI (BUU)

DME or RADAR required.

**▼** Circling NA to Rwy 1 and 19. Circling Rwy 29 NA at night. When local altimeter setting not received, use General Mitchell Intl altimeter setting and increase all MDA 80 feet, increase Circling Cat C/D visibility ¼ SM.

**▲** MISSED APPROACH: Climb to 2600 then left turn on BAE VOR/DME R-180 to LISSI/20 DME/RADAR and hold.

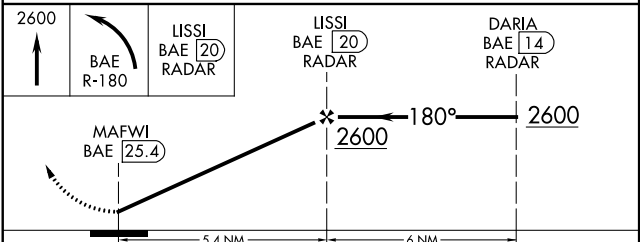
AWOS-3 <b>125.275</b>	MILWAUKEE APP CON <b>135.875 307.0</b>	GCO <b>121.725</b>	UNICOM <b>123.05 (CTAF) 0</b>
--------------------------	---	-----------------------	----------------------------------



MIRL Rwy 11-29

REIL Rwy 11 and 29

FAF to MAP 5.4 NM					
Knots	60	90	120	150	180
Min:Sec	5:24	3:36	2:42	2:10	1:48



CATEGORY	A	B	C	D
<b>☑</b> CIRCLING	1400-1	620 (700-1)	1400-1¾ 620 (700-1¾)	1560-2½ 780 (800-2½)

EC-3, 05 DEC 2019 to 02 JAN 2020

EC-3, 05 DEC 2019 to 02 JAN 2020