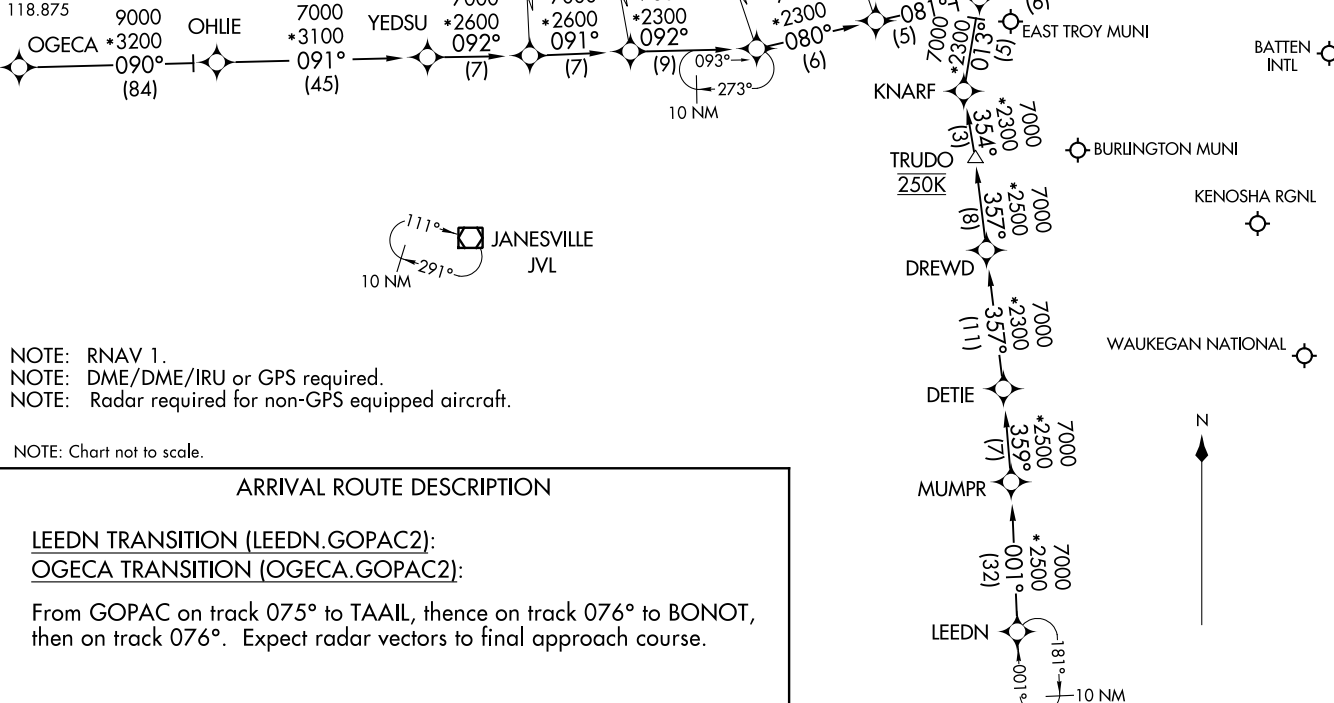


GOPAC TWO ARRIVAL (RNAV)
 (GOPAC.GOPAC2) 07DEC17

MILWAUKEE APP CON
 126.5 307.0
 GENERAL MITCHELL INTL D-ATIS
 126.4
 LAWRENCE J TIMMERMAN ATIS
 128.3
 WAUKEGAN NATIONAL ATIS
 132.4
 KENOSHA RGNL ATIS
 127.175
 WAUKESHA COUNTY ATIS
 118.875



NOTE: RNAV 1.
 NOTE: DME/DME/IRU or GPS required.
 NOTE: Radar required for non-GPS equipped aircraft.

NOTE: Chart not to scale.

ARRIVAL ROUTE DESCRIPTION

LEEDN TRANSITION (LEEDN.GOPAC2):
OGECA TRANSITION (OGECA.GOPAC2):

From GOPAC on track 075° to TAAIL, thence on track 076° to BONOT, then on track 076°. Expect radar vectors to final approach course.

(GOPAC.GOPAC2) 17341
 GOPAC TWO ARRIVAL (RNAV)

AL-262 (FAA)

MILWAUKEE, WISCONSIN