

WAAS CH 99540 W36A	APP CRS 360°	Rwy Idg TDZE Apt Elev	3200 968 968
--	------------------------	-----------------------------	---

RNAV (GPS) RWY 36

BUFFALO MUNI (CFE)

▼ For uncompensated Baro-VNAV systems, LNAV/VNAV NA below -16°C (4°F) or above 54°C (130°F). Circling Rwy 18 NA at night. Rwy 36 helicopter visibility reduction below ¾ SM NA. DME/DME RNP-0.3 NA.

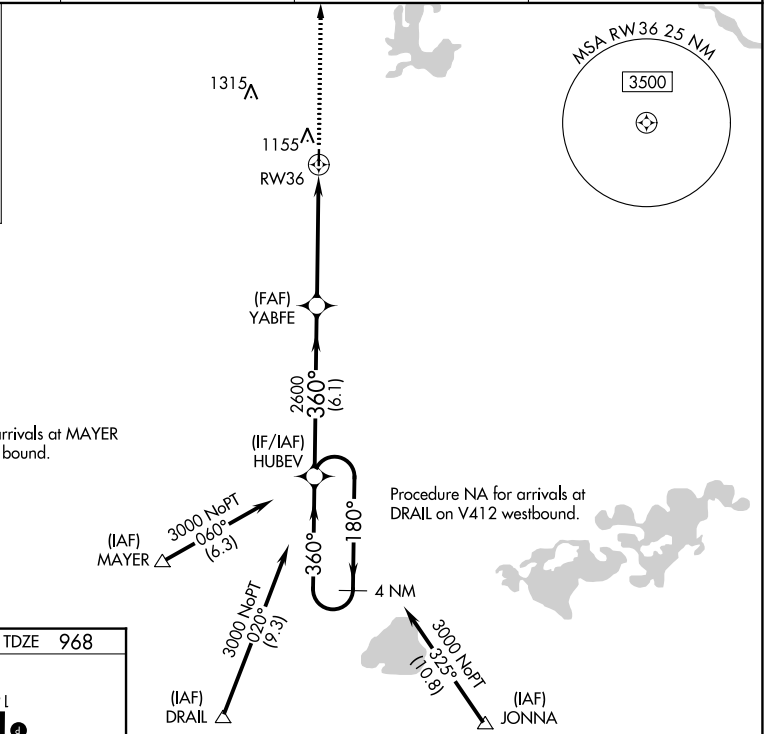
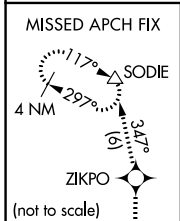
MISSED APPROACH: Climb to 3400 direct ZIKPO and track 347° to SODIE and hold.

AWOS-3PT
120.45

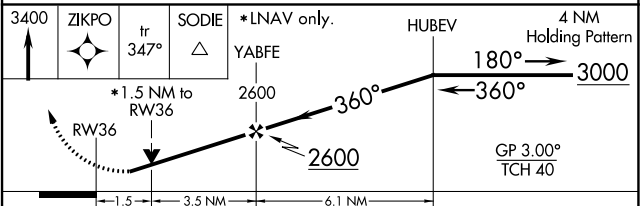
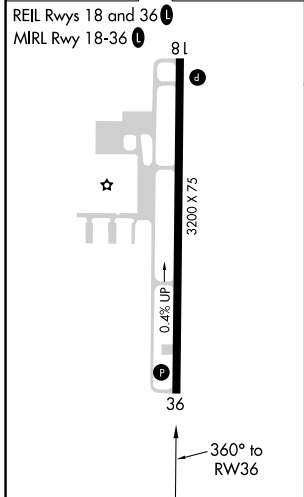
MINNEAPOLIS APP CON
126.5 335.65

GCO
121.725

UNICOM
122.8 (CTAF) **📻**



ELEV 968	TDZE 968
----------	----------



CATEGORY	A	B	C	D
LPV DA	1280-1 1/8	312 (400-1 1/8)		NA
LNAV/VNAV DA	1396-1 1/2	428 (500-1 1/2)		NA
LNAV MDA	1460-1	492 (500-1)	1460-1 3/8 492 (500-1 3/8)	NA
C CIRCLING	1460-1	492 (500-1)	1540-1 1/2 572 (600-1 1/2)	NA

NC-1, 22 FEB 2024 to 21 MAR 2024

NC-1, 22 FEB 2024 to 21 MAR 2024

VORTAC GEP 117.3 Chan 120	APP CRS 266°	Rwy Idg TDZE Apt Elev	N/A N/A 968
---	------------------------	-----------------------------	--

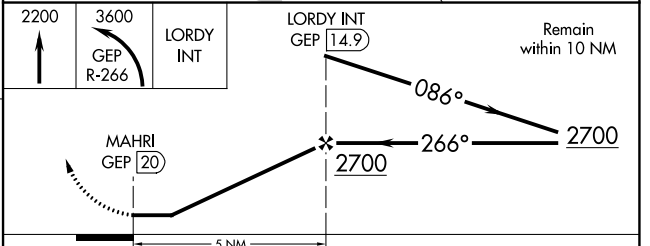
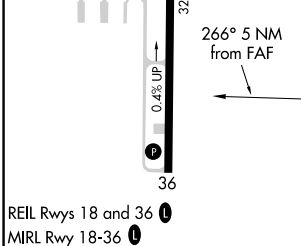
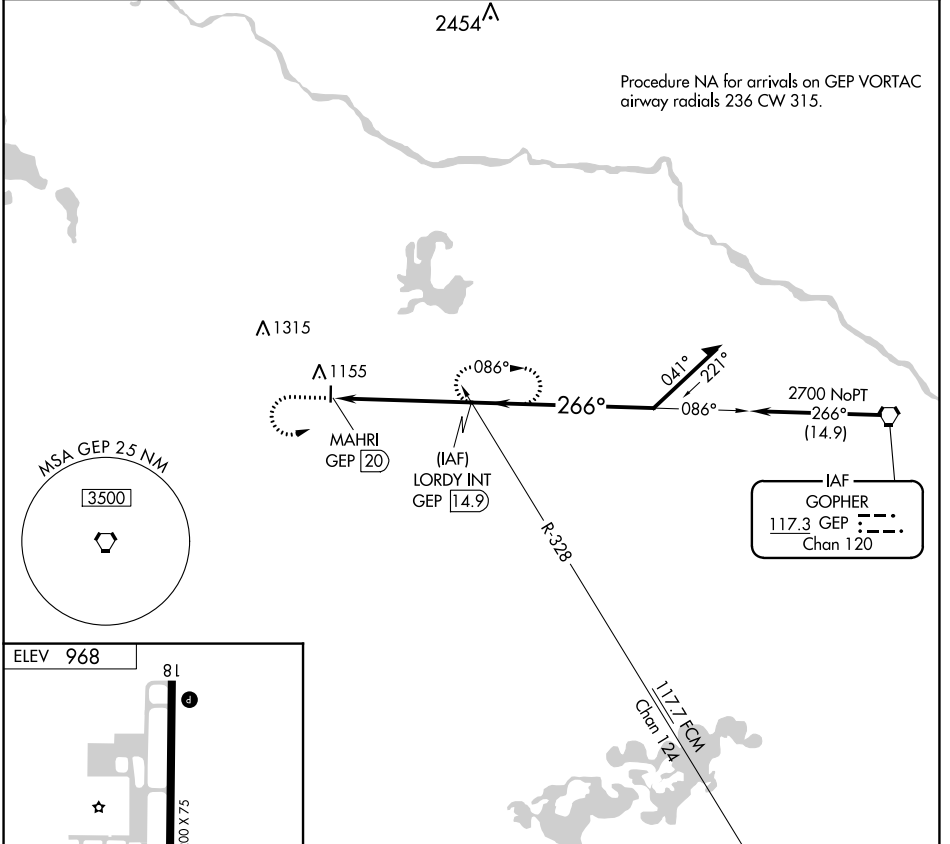
VOR-A

BUFFALO MUNI (CFE)

⚠ When local altimeter setting not received, use Maple Lake altimeter setting. When VGSI inoperative, procedure NA at night.

MISSED APPROACH: Climb to 2200 then climbing left turn to 3600 via GEP VORTAC R-266 to LORDY INT/GEP VORTAC 14.9 DME and hold.

AWOS-3PT 120.45	MINNEAPOLIS APP CON 126.5 335.65	GCO 121.725	UNICOM 122.8 (CTAF) 0
---------------------------	--	-----------------------	--



FAF to MAP 5 NM					CATEGORY	A	B	C	D		
Knots	60	90	120	150	180	CIRCLING	1580-1	612 (700-1)	1580-1 ³ / ₄	612 (700-1 ³ / ₄)	NA
Min:Sec	5:00	3:20	2:30	2:00	1:40						

NC-1, 22 FEB 2024 to 21 MAR 2024

NC-1, 22 FEB 2024 to 21 MAR 2024