


LOC I-CPS 109.1	APP CRS 302°	Rwy Idg 7002
	TDZE 412	
	Apt Elev 413	

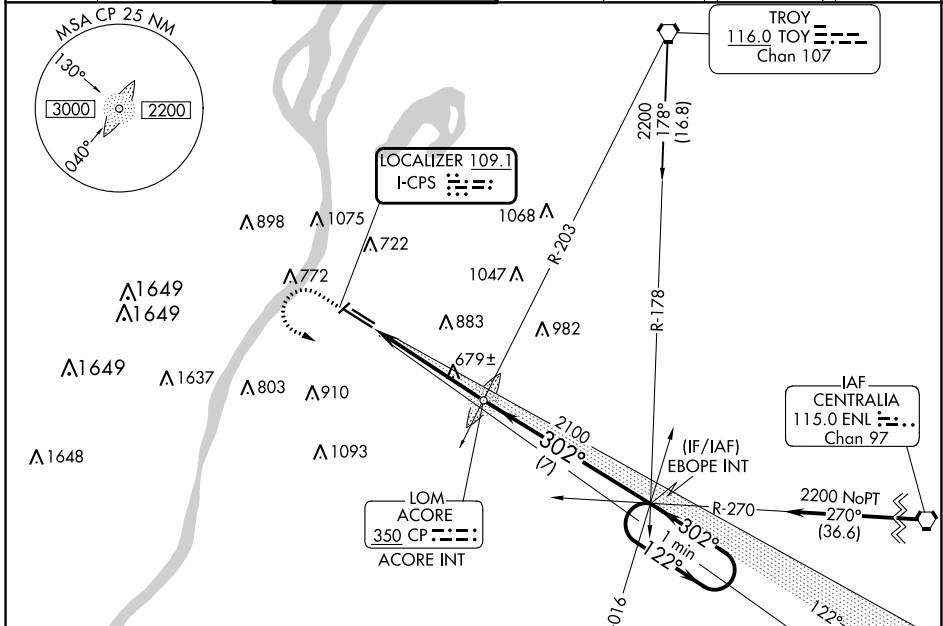
ILS or LOC RWY 30L

ST LOUIS DOWNTOWN (CPS)

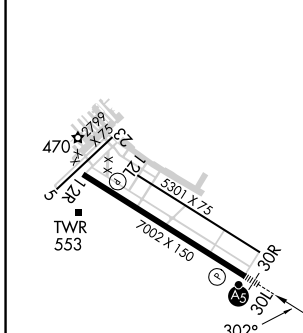
⚠ When local altimeter setting not received, use St Louis Lambert Intl altimeter setting: increase DA to 674 feet, increase all MDAs 80 feet and visibility S-LOC 30L Cats C/D and Circling Cat C ¼ SM. For inop ALS when using St Louis Lambert Intl altimeter setting, increase S-ILS 30L visibility ¼ SM. Circling Rwy 5 NA at night.

MALSR  MISSED APPROACH: Climb to 1400 then climbing left turn to 2200 on heading 080° and on I-CPS SE course (122°) to EBOPE INT and hold.

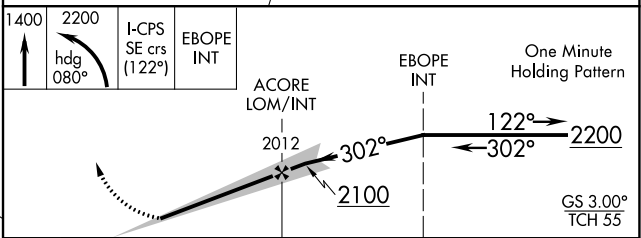
ATIS 121.45	ST LOUIS APP CON 123.7 371.875	DOWNTOWN TOWER * 119.925 (CTAF) 0 379.3	GND CON 121.8	CLNC DEL 118.275	CLNC DEL 121.8 (when twr closed)	UNICOM 122.95
-----------------------	--	---	-------------------------	----------------------------	---	-------------------------



ELEV 413	D	TDZE 412
----------	----------	----------



HIRL Rwy 12R-30L					
REIL Rwys 12L and 12R					
REIL Rwy 30R					
MIRL Rwys 5-23 and 12L-30R					
FAF to MAP 4.8 NM					
Knots	60	90	120	150	180
Min:Sec	4:48	3:12	2:24	1:55	1:36



CATEGORY	A	B	C	D
S-ILS 30L		612-½	200 (200-½)	
S-LOC 30L	940-½	528 (600-½)	940-1 528 (600-1)	940-1¼ 528 (600-1¼)
CIRCLING	940-1 527 (600-1)	1120-1 707 (800-1)	1240-2½ 827 (900-1½)	1380-3 967 (1000-3)

EC-3, 22 FEB 2024 to 21 MAR 2024

EC-3, 22 FEB 2024 to 21 MAR 2024

APP CRS	Rwy Idg	7002
107°	TDZE	413
	Apt Elev	413

RNAV (GPS) RWY 12R

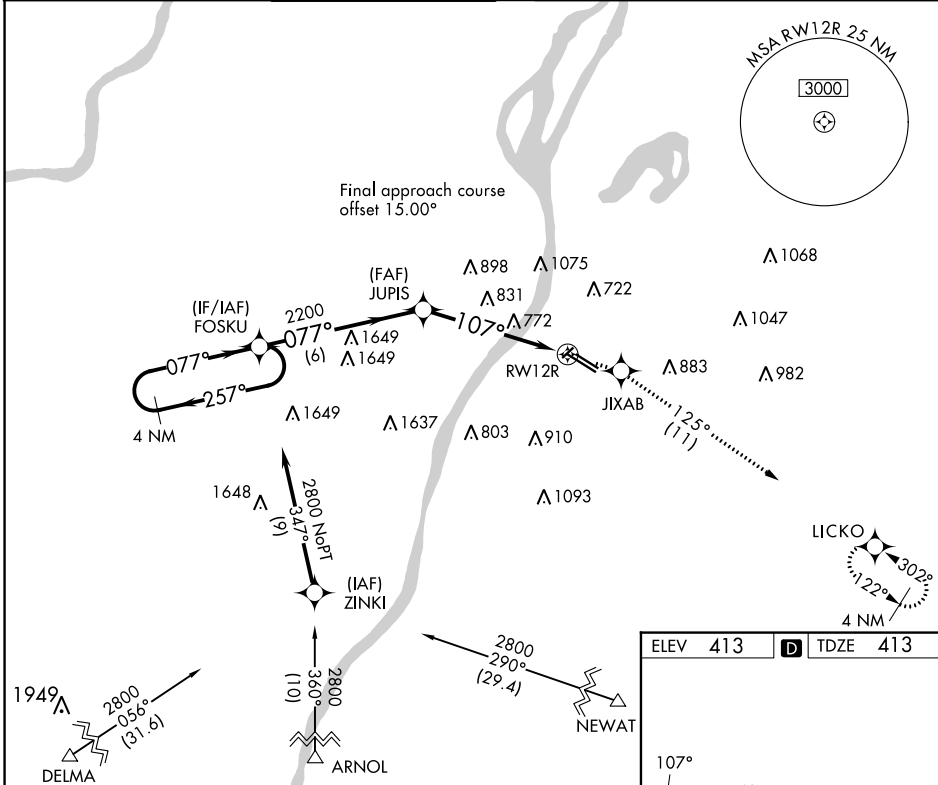
ST LOUIS DOWNTOWN (CPS)

RNP APCH.

▼ When local altimeter setting not received, use St Louis Lambert Intl altimeter setting and increase all MDAs 80 feet; increase RNAV Cats B/C/D and Circling Cat C visibility ¼ SM. Circling Rwy 5 NA at night. Rwy 12R helicopter visibility reduction below ¼ SM NA.

MISSED APPROACH: Climb to 2200 direct JIXAB and right turn on 125° track to LICKO and hold.

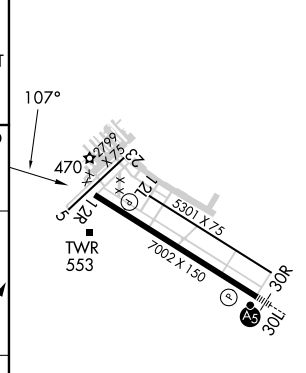
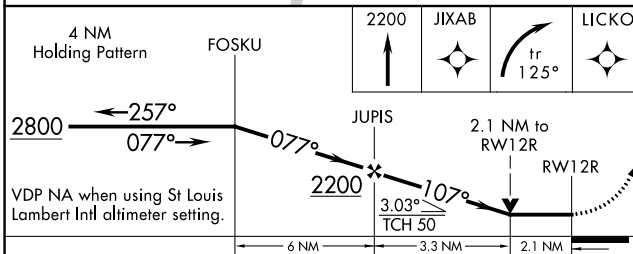
ATIS	ST LOUIS APP CON	DOWNTOWN TOWER ★	GND CON	CLNC DEL	CLNC DEL	UNICOM
121.45	123.7 371.875	119.925 (CTAF) 0 379.3	121.8	118.275	121.8 (when twr closed)	122.95



EC-3, 22 FEB 2024 to 21 MAR 2024

EC-3, 22 FEB 2024 to 21 MAR 2024

ELEV	413	TDZE	413
------	-----	------	-----



CATEGORY	A	B	C	D
RNAV MDA	1140-1 727 (800-1)		1140-2 727 (800-2)	1140-2¼ 727 (800-2¼)
CIRCLING	1140-1 727 (800-1)		1240-2½ 827 (900-2½)	1380-3 967 (1000-3)

HIRL Rwy 12R-30L
 REIL Rwys 12L and 12R
 REIL Rwy 30R
 MIRL Rwys 5-23 and 12L-30R

WAAS CH 70521 W30A	APP CRS 302°	Rwy Idg TDZE 411 Apt Elev 413	7002
--	------------------------	---	-------------

RNAV (GPS) RWY 30L

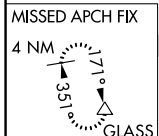
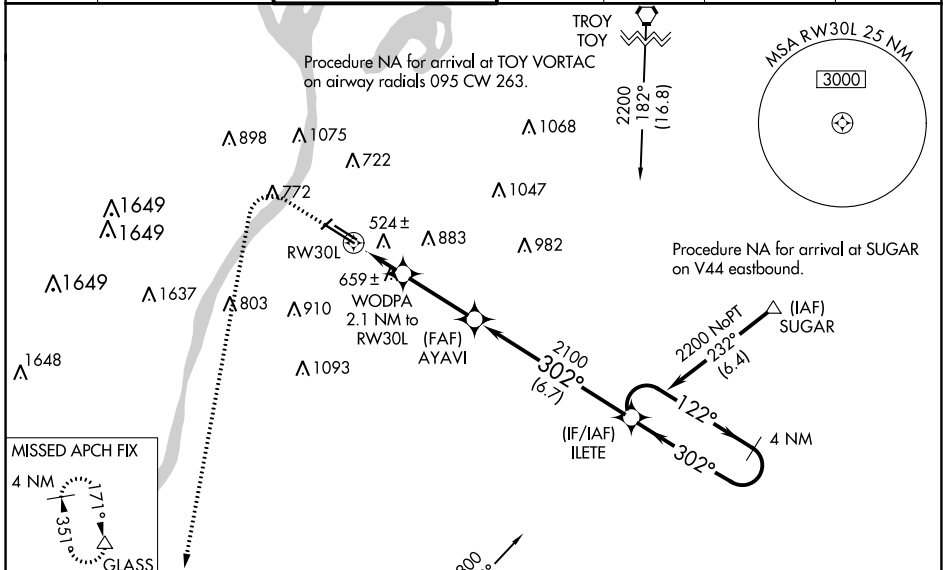
ST LOUIS DOWNTOWN (CPS)

⚠ DME/DME RNP-0.3 NA. When local altimeter setting not received, use St Louis Lambert Intl altimeter setting and increase LPV DA to 674 feet, LNAV/VNAV DA to 890 feet, and all MDA 80 feet; increase LNAV/VNAV all Cats visibility $\frac{1}{4}$ SM, LNAV Cats C/D visibility $\frac{3}{8}$ SM, and Circling Cat C visibility $\frac{1}{4}$ SM. VDP and Baro-VNAV NA with St Louis Lambert Intl altimeter setting. For uncompensated Baro-VNAV systems, LNAV/VNAV NA below -1.5°C (5°F) or above 41°C (105°F). When using St Louis Lambert Intl altimeter setting; for inop MALS, increase LPV all Cats visibility to $\frac{3}{8}$ mile and LNAV Cats C/D visibility to $1\frac{3}{8}$ mile. Night landing: Rwy 5 NA.

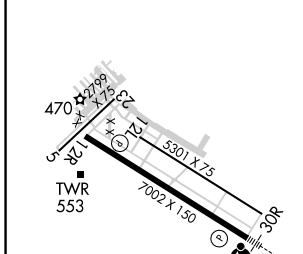


MISSED APPROACH:
Climb to 1000 then climbing left turn to 3000 direct GLASS and hold.

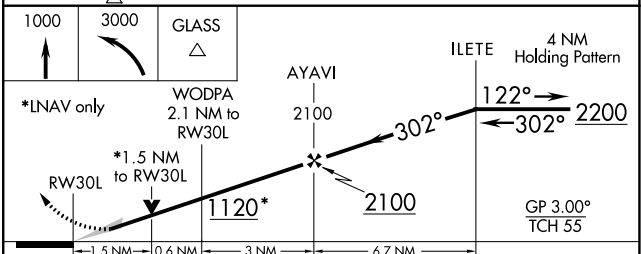
ATIS 121.45	ST LOUIS APP CON 123.7 371.875	DOWNTOWN TOWER * 119.925 (CTAF) 0 379.3	GND CON 121.8	CLNC DEL 118.275	CLNC DEL 121.8 (when twr closed)	UNICOM 122.95
-----------------------	--	--	-------------------------	----------------------------	---	-------------------------



ELEV 413	D	TDZE 411
----------	----------	----------



Procedure NA for arrivals at GLASS on V234 westbound and on V9-335 southbound and on V335 westbound.



CATEGORY	A	B	C	D
LPV DA		611- $\frac{1}{2}$	200 (200- $\frac{1}{2}$)	
LNAV/VNAV DA		827- $\frac{7}{8}$	416 (500- $\frac{7}{8}$)	
LNAV MDA	940- $\frac{1}{2}$	529 (600- $\frac{1}{2}$)	940-1	529 (600-1)
CIRCLING	940-1 527 (600-1)	1120-1 707 (800-1)	1240-2 $\frac{1}{2}$ 827 (900-2 $\frac{1}{2}$)	1380-3 967 (1000-3)

HIRL Rwy 12R-30L
REIL Rwy 12L and 12R
REIL Rwy 30R
MIRL Rwy 5-23 and 12L-30R

EC-3, 22 FEB 2024 to 21 MAR 2024

EC-3, 22 FEB 2024 to 21 MAR 2024

APP CRS	Rwy Idg	5300
302°	TDZE	408
	Apt Elev	413

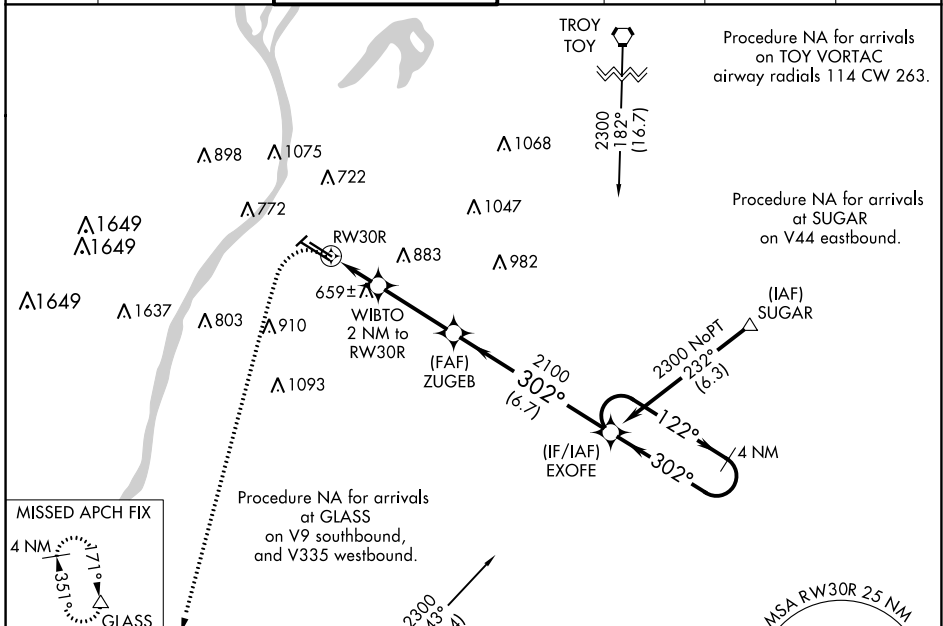
RNAV (GPS) RWY 30R

ST LOUIS DOWNTOWN (CPS)

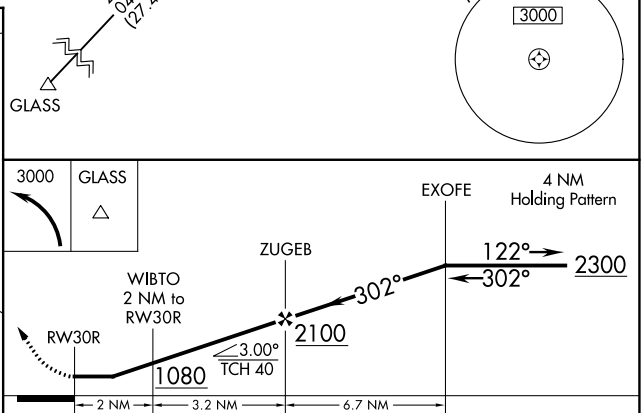
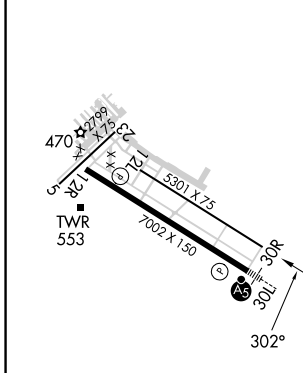
▼ Circling Rwy 5 NA at night. DME/DME RNP-0.3 NA. Rwy 30R helicopter visibility reduction below ¼ SM NA. When local altimeter setting not received, use St Louis Lambert Intl altimeter setting and increase all MDA 80 feet, increase LNAV Cats C/D visibility ½ SM and Circling Cat C visibility ¼ SM.

▲ MISSED APPROACH: Climbing left turn to 3000 direct GLASS and hold.

ATIS 121.45	ST LOUIS APP CON 123.7 371.875	DOWNTOWN TOWER ★ 119.925 (CTAF) 0 379.3	GND CON 121.8	CLNC DEL 118.275	CLNC DEL 121.8 (when twr closed)	UNICOM 122.95
-----------------------	--	---	-------------------------	----------------------------	---	-------------------------



ELEV	413	D	TDZE	408
------	------------	----------	------	------------



CATEGORY	A	B	C	D
LNAV MDA	920-1	512 (600-1)	920-1½	512 (600-1½)
CIRCLING	920-1 507 (600-1)	1120-1 707 (800-1)	1240-2½ 827 (900-2½)	1380-3 967 (1000-3)

EC-3, 22 FEB 2024 to 21 MAR 2024

EC-3, 22 FEB 2024 to 21 MAR 2024