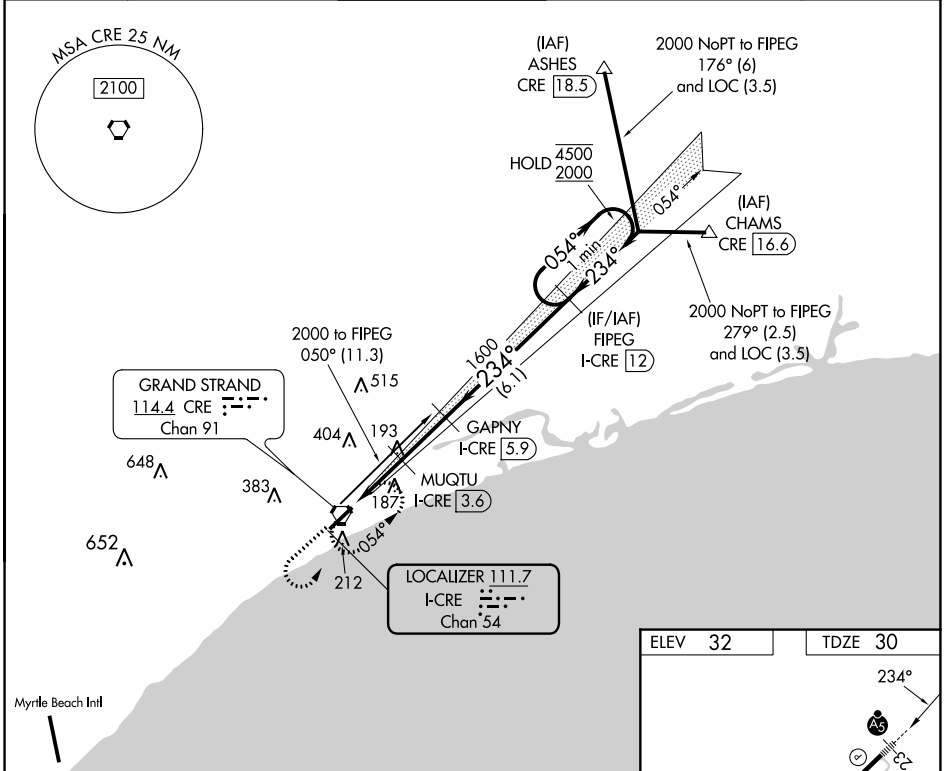


LOC/DME I-CRE 111.7 Chan 54	APP CRS 234°	Rwy Idg TDZE 30 Apt Elev 32	5997
---	------------------------	---	-------------

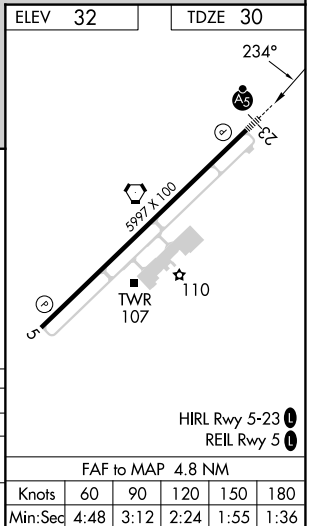
ILS or LOC RWY 23

GRAND STRAND (CRE)

DME required.		MALSR		MISSED APPROACH: Climb to 1000 then climbing left turn to 2000 direct CRE VORTAC and hold, continue climb-in-hold to 2000.	
Rwy 23 helicopter visibility reduction below 3/4 SM NA. For inop ALS, increase S-LOC 23 Cat A/B visibility to 1 SM.					
ATIS 119.625	MYRTLE BEACH APP CON * 119.2 350.3	STRAND TOWER * 124.6 (CTAF) 0 257.6	GND CON 121.8 257.6	CLNC DEL 121.8	UNICOM 122.95



1000	2000	CRE	One Minute Holding Pattern			
			GAPNY I-CRE 5.9	FIPEG I-CRE 12		
			MUQTU I-CRE 3.6	1600	054° → 4500	← 234° 2000
			I-CRE 1.1	I-CRE 2.3	GS 3.00° TCH 55	
			880	1600		
			1.2 NM	1.3 NM	2.3 NM	6.1 NM
CATEGORY	A		B		C	
S-ILS 23	230-1/2		200 (200-1/2)			
S-LOC 23	460-3/4		430 (500-3/4)			
CIRCLING	520-1 488 (500-1)		720-2 688 (700-2)		720-2 1/4 688 (700-2 1/4)	



SE-2, 22 FEB 2024 to 21 MAR 2024

SE-2, 22 FEB 2024 to 21 MAR 2024

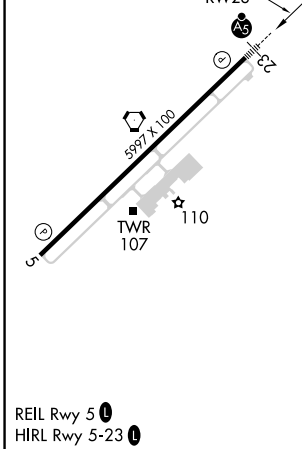
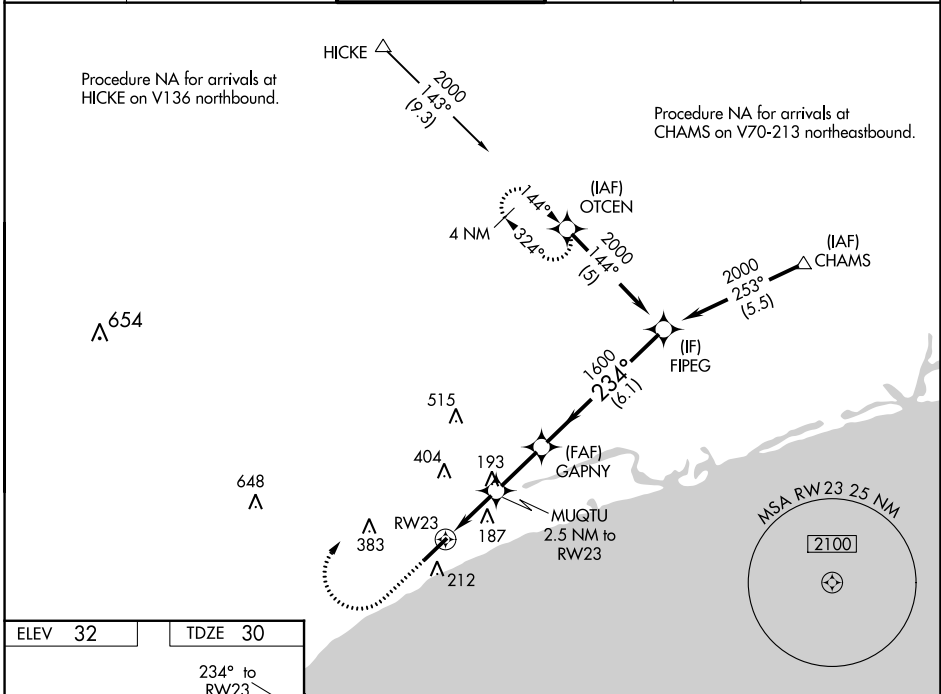
WAAS CH 42819 W23A	APP CRS 234°	Rwy Idg TDZE 30 Apt Elev 32	5997
--	------------------------	---	-------------

RNAV (GPS) RWY 23

GRAND STRAND (CRE)

RNP APCH-GPS.		MALSR	MISSED APPROACH: Climb to 1000 then climbing right turn to 2000 direct OTCEN and hold.
<p>▼ Rwy 23 helicopter visibility reduction below 3/4 SM NA. For uncompensated Baro-VNAV systems, LNAV/VNAV NA below -7°C or above 54°C. For inop ALS, increase LNAV/VNAV all Cats visibility to 1 1/8 SM; increase LNAV Cats A/B visibility to 1 SM.</p>			

ATIS 119.625	MYRTLE BEACH APP CON* 119.2 350.3	STRAND TOWER* 124.6 (CTAF) 0 257.6	GND CON 121.8 257.6	CLNC DEL 121.8	UNICOM 122.95
------------------------	---	--	-------------------------------	--------------------------	-------------------------



1000	2000	OTCEN	FIPEG	
MUGTU 1600		234°		2000
1.3 NM to RWY 23		2.5 NM to RWY 23		GP 3.00° TCH 55
880		1600		
1.3 NM		1.2 NM		2.3 NM
6.1 NM				
CATEGORY	A	B	C	D
LPV DA		230-1/2	200 (200-1/2)	
LNAV/VNAV DA		412-3/4	382 (400-3/4)	
LNAV MDA	480-3/4	450 (500-3/4)	480-7/8	450 (500-7/8)
CIRCLING	520-1	488 (500-1)	720-2	720-2 1/4
			688 (700-2)	688 (700-2 1/4)

SE-2, 22 FEB 2024 to 21 MAR 2024

SE-2, 22 FEB 2024 to 21 MAR 2024

WAAS CH 82519 W05A	APP CRS 054°	Rwy Idg TDZE Apt Elev	5997 31 31
--	------------------------	-----------------------------	---------------------------------------

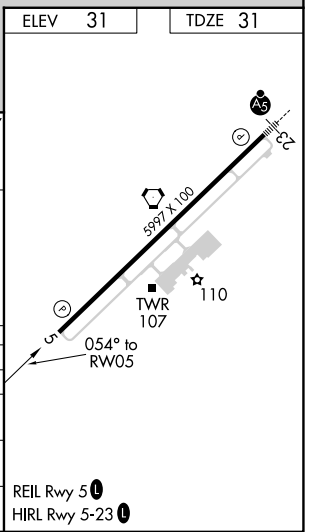
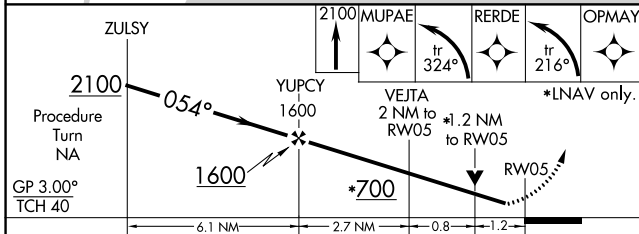
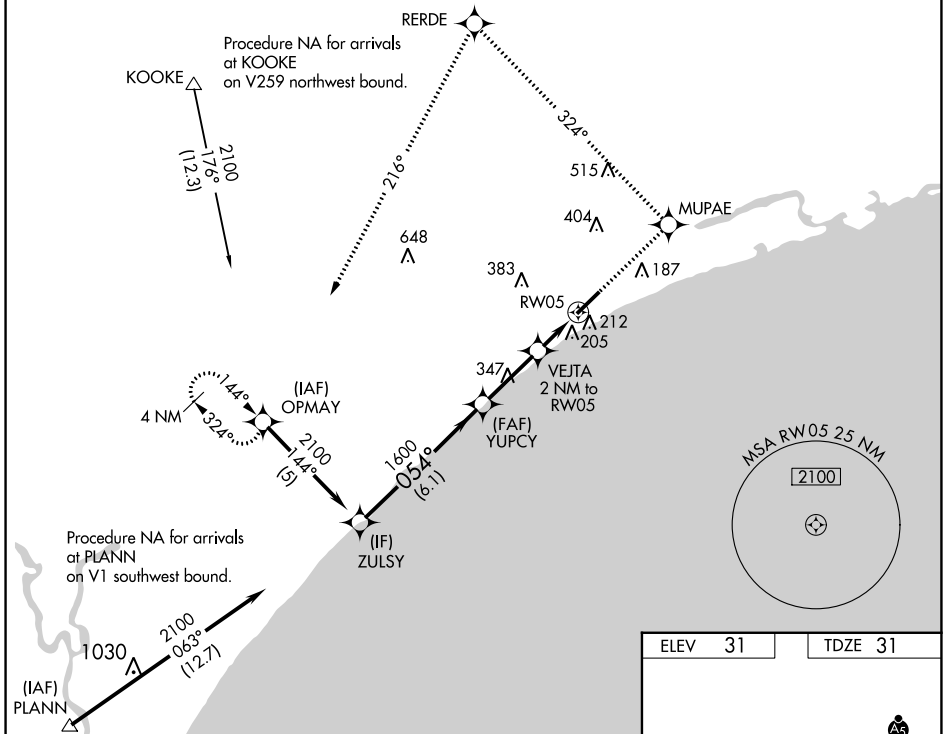
RNAV (GPS) RWY 5

GRAND STRAND (CRE)

⚠ For uncompensated Baro-VNAV systems, LNAV/VNAV NA below -15°C (5°F) or above 48°C (118°F). DME/DME RNP-0.3 NA. Visibility reduction by helicopters NA. When local altimeter setting not received use Myrtle Beach Intl altimeter setting and increase all DA 31 feet and all MDA 40 feet. VDP and Baro-VNAV NA with Myrtle Beach Intl altimeter setting.

⚠ MISSED APPROACH: Climb to 2100 direct MUPAE and left turn on track 324° to RERDE and left turn on track 216° to OPMAY and hold.

ATIS 119.625	MYRTLE BEACH APP CON* 119.2 350.3	STRAND TOWER* 124.6 (CTAF) 0 257.6	GND CON 121.8 257.6	CLNC DEL 121.8	UNICOM 122.95
------------------------	---	--	-------------------------------	--------------------------	-------------------------



CATEGORY	A	B	C	D
LPV DA		281-1	250 (300-1)	
LNAV/VNAV DA		496-1¾	465 (500-1¾)	
LNAV MDA	460-1	429 (500-1)	460-1½ 429 (500-1½)	460-1½ 429 (500-1½)
CIRCLING	520-1	489 (500-1)	720-2 689 (700-2)	720-2½ 689 (700-2½)

SE-2, 22 FEB 2024 to 21 MAR 2024

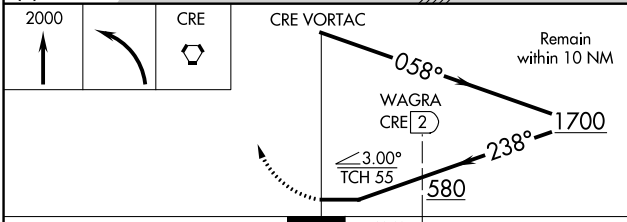
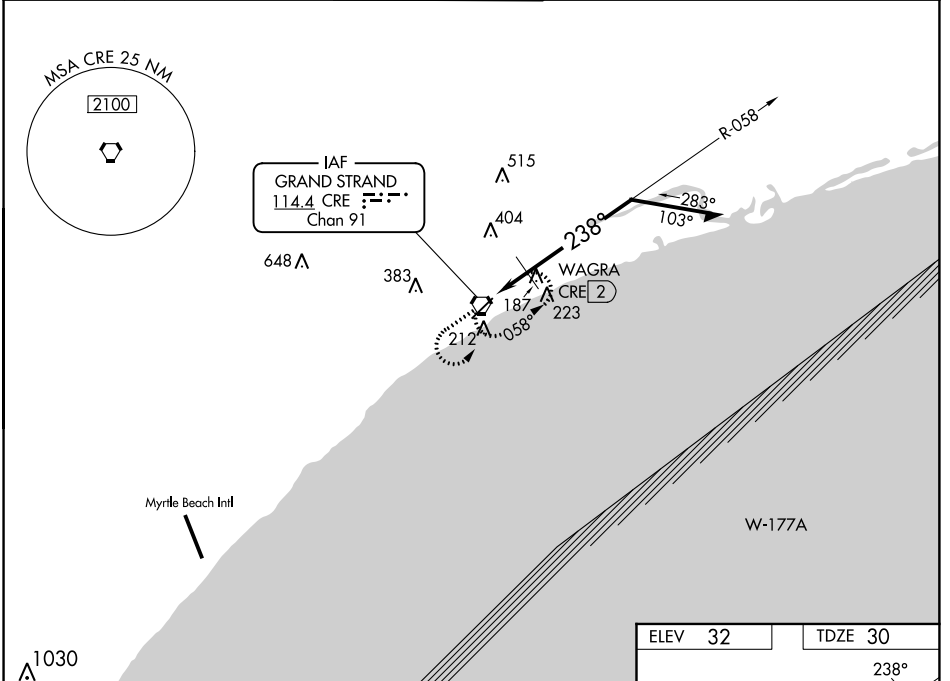
SE-2, 22 FEB 2024 to 21 MAR 2024

VORTAC CRE 114.4 Chan 91	APP CRS 238°	Rwy Idg 5997 TDZE 30 Apt Elev 32
--	------------------------	---

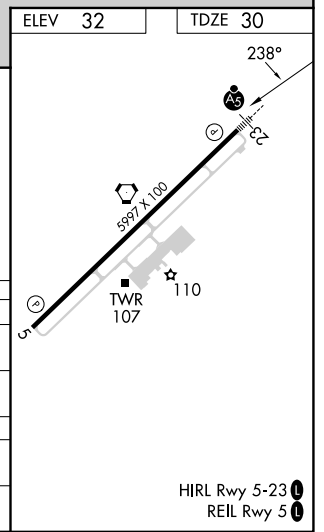
VOR RWY 23

GRAND STRAND (CRE)

<p>⚠ Rwy 23 helicopter visibility reduction below $\frac{3}{4}$ SM NA. For inop ALS, increase S-23 Cats A/B visibility to 1 SM.</p>		<p>MALSR</p>	<p>MISSED APPROACH: Climb to 2000 then left turn direct CRE VORTAC and hold.</p>			
ATIS 119.625	MYRTLE BEACH APP CON* 119.2 350.3	STRAND TOWER* 124.6 (CTAF) 257.6		GND CON 121.8 257.6	CLNC DEL 121.8	UNICOM 122.95



CATEGORY	A	B	C	D
S-23	580- $\frac{3}{4}$	550 (600- $\frac{3}{4}$)	580-1 $\frac{1}{8}$	550 (600-1 $\frac{1}{8}$)
C CIRCLING	580-1	548 (600-1)	720-2 688 (700-2)	720-2 $\frac{1}{4}$ 688 (700-2 $\frac{1}{4}$)
WAGRA FIX MINIMUMS				
S-23	480- $\frac{3}{4}$	450 (500- $\frac{3}{4}$)	480- $\frac{7}{8}$	450 (500- $\frac{7}{8}$)
C CIRCLING	520-1	488 (500-1)	720-2 688 (700-2)	720-2 $\frac{1}{4}$ 688 (700-2 $\frac{1}{4}$)



SE-2, 22 FEB 2024 to 21 MAR 2024

SE-2, 22 FEB 2024 to 21 MAR 2024

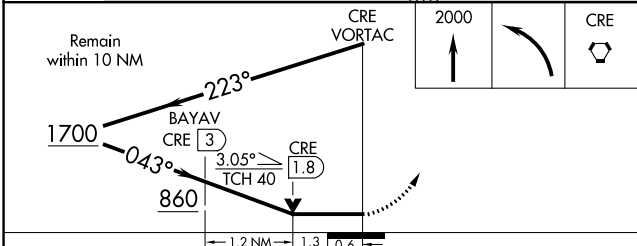
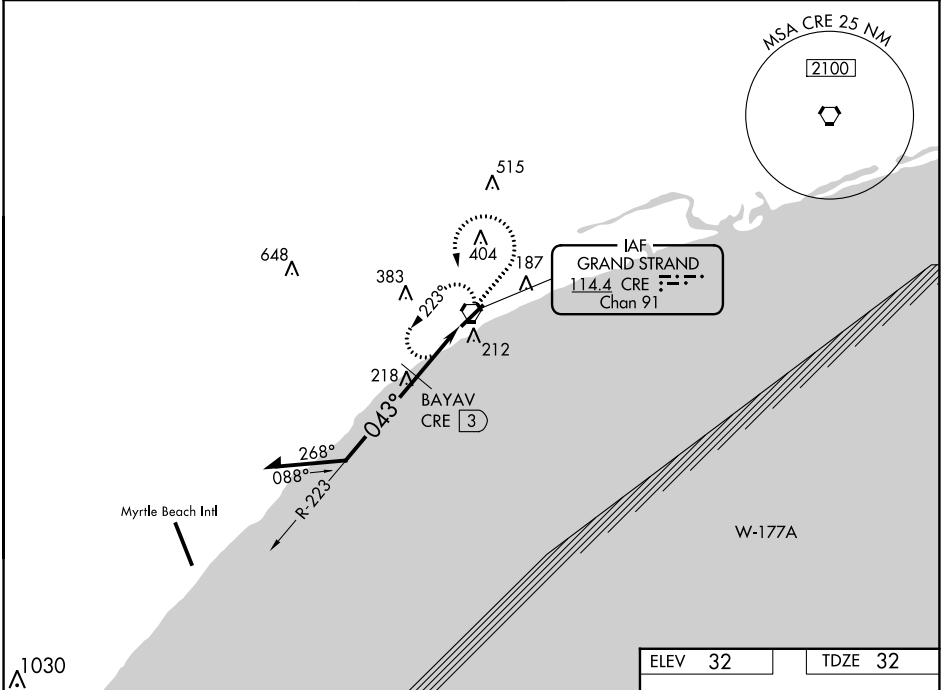
VORTAC CRE 114.4 Chan 91	APP CRS 043°	Rwy Idg 5997 TDZE 32 Apt Elev 32
--	------------------------	---

VOR RWY 5

GRAND STRAND (CRE)

▽ Rwy 5 helicopter visibility reduction below ¾ SM NA. MISSED APPROACH: Climb to 2000 then left turn direct CRE VORTAC and hold.

ATIS 119.625	MYRTLE BEACH APP CON * 119.2 350.3	STRAND TOWER * 124.6 (CTAF) 0 257.6	GND CON 121.8 257.6	CLNC DEL 121.8	UNICOM 122.95
------------------------	--	---	-------------------------------	--------------------------	-------------------------



ELEV 32	TDZE 32
---------	---------

REIL Rwy 5 **0**
HIRL Rwy 5-23 **0**

CATEGORY	A	B	C	D
S-5	860-1 828 (900-1)	860-1¼ 828 (900-1¼)	860-2½	828 (900-2½)
C CIRCLING	860-1¼	828 (900-1¼)	860-2½ 828 (900-2½)	860-2¾ 828 (900-2¾)
BAYAV FIX MINIMUMS				
S-5	480-1	448 (500-1)	480-1¾	448 (500-1¾)
C CIRCLING	520-1	488 (500-1)	720-2 688 (700-2)	720-2¼ 688 (700-2¼)

SE-2, 22 FEB 2024 to 21 MAR 2024

SE-2, 22 FEB 2024 to 21 MAR 2024