



ARRIVAL ROUTE DESCRIPTION

From CESAN on track 185° to CREPO, then on track 196° to PLEDO.

LANDING HOU RWYS 13L/R: From PLEDO on track 196° to FRITZ, then on track 196° to SSERA, then on track 244° to LLEGS, then on track 239° to FRDDY, then on track 289° to FIGGG, then on track 278° to IVEEE, then on track 280° to VILLI, then on track 311° to ALLY, then on track 311°. Expect vectors to final approach course.

LANDING HOU RWY 4: From PLEDO on track 196° to FRITZ, then on track 196° to SSERA, then on track 244° to LLEGS, then on track 239° to FRDDY, then on track 289° to FIGGG, then on track 255° to SHUUG, then on track 222° to EMARR, then on track 222°. Expect vectors to approach course.

LANDING HOU RWY 22: From PLEDO on track 196° to FRITZ, then on track 196° to SSERA, then on track 244° to LLEGS, then on track 273° to WWILD, then on track 310° to JCNT0, then on track 310°. Expect vectors to final approach course.

LANDING HOU RWYS 31L/R: From PLEDO on track 196° to FRITZ, then on track 196° to SSERA, then on track 244° to LLEGS, then on track 220° to MMOOW, then on track 274°. Expect vectors to final approach course.

ALL OTHER AIRPORTS: From CESAN on track 185° to CREPO, then on track 196° to PLEDO, then on track 196° to FRITZ, then on track 196° to SSERA, then on track 244° to KAANE, then on track 215°. Expect vectors to final approach course.

SC-5, 22 FEB 2024 to 21 MAR 2024

SC-5, 22 FEB 2024 to 21 MAR 2024

HUDZY FOUR ARRIVAL  
(HUDZY,HUDZY4) 100CT19

HUDZY FOUR ARRIVAL  
23054

AL-198 (FAA)

HOUSTON, TEXAS

HOUSTON APP CON  
120.05 379.1  
CXO ATIS  
118.325  
DWH ATIS  
128.375  
EFD ATIS  
135.575 269.9  
HOU D-ATIS  
124.6  
IAH D-ATIS  
124.05  
SGR ATIS \*  
118.125  
TME ATIS  
119.525

LUFKIN  
112.1 LFK  
Chan 58

SAWMILL  
113.75 SWB  
Chan 84 (Y)  
N31°58.39-W92°40.63'  
L-22, H-6

BRWCK  
N30°35.23'  
W93°42.36'

ALEXANDRIA  
116.1 AEX  
Chan 108  
N31°15.40-W92°30.06'  
L-21-22, H-6

LAKE CHARLES  
113.4 LCH  
Chan 81

SABINE PASS  
115.4 SBI  
Chan 101

WAPPL  
N30°13.91'  
W94°19.84'  
**VERTICAL NAVIGATION  
PLANNING INFORMATION**

CLEVELAND MUNI

CLWSN  
N30°04.42'  
W94°55.13'

HUDZY  
N30°06.21'  
W94°48.53'  
**TURBOJET:**  
Expect 14000 280K

CHAMBERS  
COUNTY

TRINITY  
114.75 MHF  
Chan 94(Y)

HUMBLE  
116.6 IAH  
Chan 113

CONROE/NORTH  
HOUSTON RGNL

DAVID WAYNE HOOKS MEML

GEORGE BUSH  
INTCNTL/HOUSTON

WEST HOUSTON

HOUSTON EXEC

WILLIAM P  
HOBBY

PEARLAND  
RGNL

HOUSTON/SOUTHWEST

TEXAS GULF  
COAST RGNL

LA PORTE MUNI

ELLINGTON

SCHOLES INTL  
AT GALVESTON

BAYTOWN  
RWJ  
AIRPARK



- NOTE: RADAR required.
- NOTE: For use by Turbojet and Turboprop aircraft capable of 280K or greater only.
- NOTE: DME/DME/IRU or GPS equipped aircraft must file the WAPPL (RNAV) STAR.
- NOTE: ATC assigned only for aircraft landing CXO, DWH, IAH, T78, and 6R3.

(NARRATIVE ON FOLLOWING PAGE) NOTE: Chart not to scale.

HOUSTON, TEXAS

ARRIVAL ROUTE DESCRIPTION

ALEXANDRIA TRANSITION (AEX.HUDZY4): From over AEX VORTAC on AEX R-235 to WAPPL, then on IAH R-067 to HUDZY. Thence. . . .

SAWMILL TRANSITION (SWB.HUDZY4): From over SWB VOR/DME on SWB R-211 to BRWCK, then on AEX R-235 to WAPPL, then on IAH R-067 to HUDZY. Thence. . . .

. . . .from over HUDZY on IAH R-067 to CLWSN, then on IAH R-067 to SWWAA, then on heading 190°. Expect RADAR vectors to final approach course.

SC-5, 22 FEB 2024 to 21 MAR 2024

SC-5, 22 FEB 2024 to 21 MAR 2024

OHIO FOUR ARRIVAL  
(OHIO.OHIO4) 22JUN17

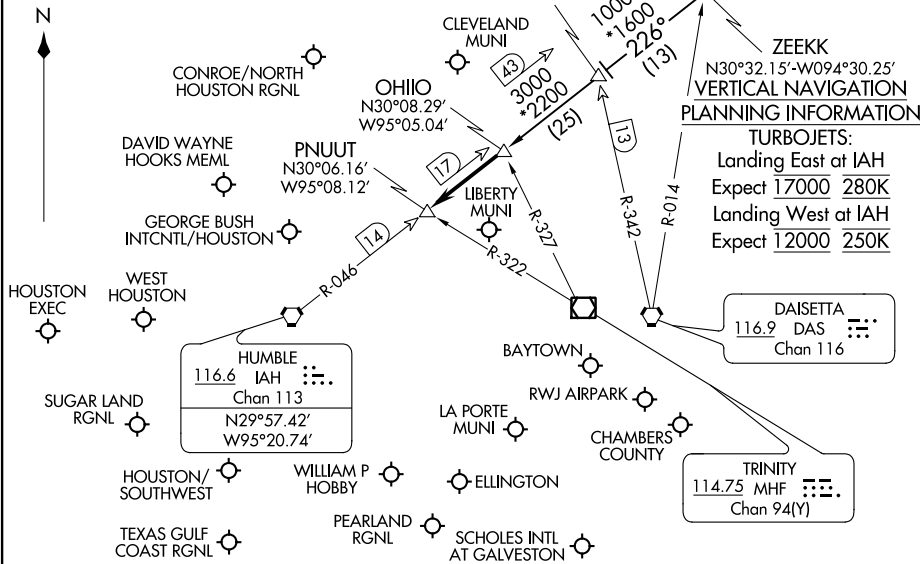
OHIO FOUR ARRIVAL  
(OHIO.OHIO4) 23222

HOUSTON APP CON  
120.05 379.1  
CXO ATIS  
118.325  
DWH ATIS  
128.375  
EFD ATIS  
135.575 269.9  
HOU D-ATIS  
124.6  
IAH D-ATIS  
124.05  
SGR ATIS\*  
118.125  
TME ATIS  
119.525

NOTE: DME/DME/IRU or GPS equipped turbojet aircraft landing IAH must file the GESNR/ZEEKK or DOOBI/SKNRD (RNAV) STAR.

NOTE: ATC assigned only for airports other than KIAH, KDWH and KCXO, T78 and 6R3.

NOTE: Chart not to scale.



**ARRIVAL ROUTE DESCRIPTION**

**ALEXANDRIA TRANSITION (AEX.OHIO4):**  
From over AEX VORTAC via AEX R-251 to LYMBO INT, then on IAH R-046 to OHIO INT. Thence . . .

**LUFKIN TRANSITION (LFK.OHIO4):**  
From over LFK VORTAC on LFK R-159 to ZEEKK INT, then on IAH R-046 to OHIO INT. Thence . . .

**GEORGE BUSH INT/CNTL AIRPORT /HOUSTON (IAH):**  
. . . from OHIO INT on IAH R-046 to PNUUT. Thence . . .  
**LANDING RUNWAYS 8L/R or 9:**  
. . . fly heading 265° for vectors to final approach course.

**LANDING ALL OTHER RUNWAYS:**  
. . . expect vectors to final approach course at or prior to PNUUT.

**FOR ALL OTHER AIRPORTS:**  
. . . from OHIO INT on IAH R-046 to PNUUT. Expect vectors to final approach course at or prior to PNUUT.

**PLANNING INFORMATION**

**TURBOJET:**  
Landing East at IAH  
Expect 17000 280K  
Landing West at IAH  
Expect 12000 250K

**DAISETTA**  
116.9 DAS  
Chan 116

**TRINITY**  
114.75 MHF  
Chan 94(Y)

**LUFKIN**  
112.1 LFK  
Chan 58  
N31°09.75'  
W94°43.00'

**HUMBLES IAH**  
116.6 IAH  
Chan 113  
N29°57.42'  
W95°20.74'

**ALEXANDRIA**  
116.1 AEX  
Chan 108  
N31°15.40'  
W92°30.06'

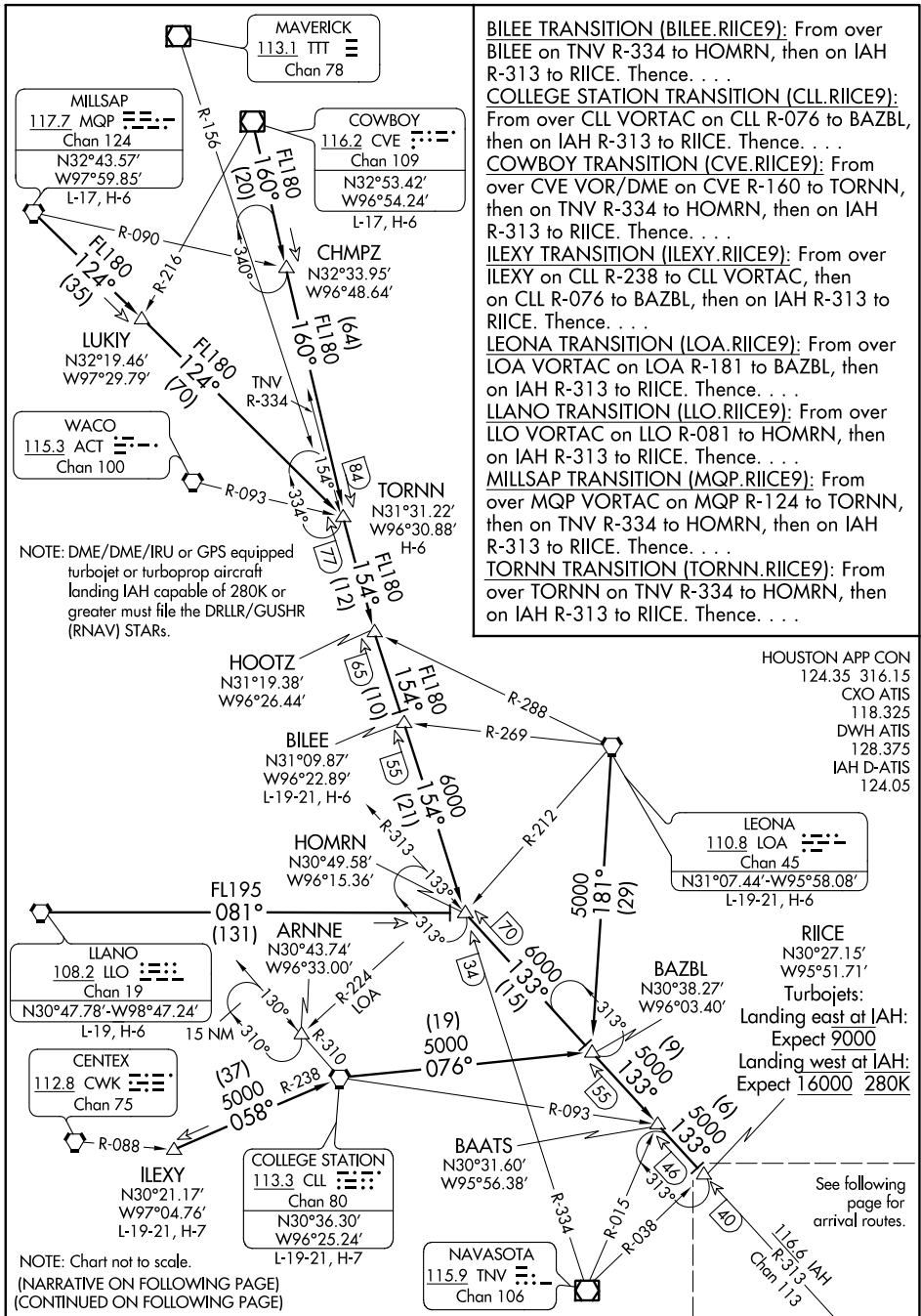
HOUSTON, TEXAS

HOUSTON, TEXAS

# RIICE NINE ARRIVAL

## Transition Routes

HOUSTON, TEXAS



SC-5, 22 FEB 2024 to 21 MAR 2024

SC-5, 22 FEB 2024 to 21 MAR 2024

# RIICE NINE ARRIVAL

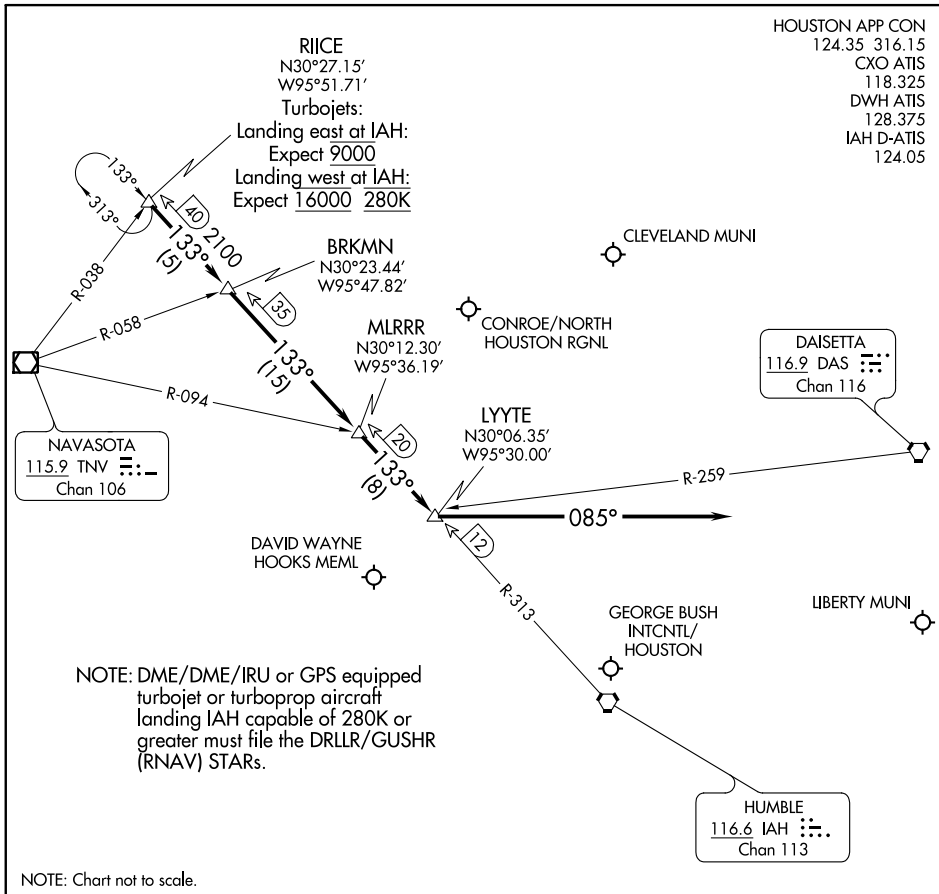
## Transition Routes

HOUSTON, TEXAS

# RIICE NINE ARRIVAL

## Arrival Routes

HOUSTON, TEXAS



SC-5, 22 FEB 2024 to 21 MAR 2024

SC-5, 22 FEB 2024 to 21 MAR 2024

### ARRIVAL ROUTE DESCRIPTION

GEORGE BUSH INTCNL/HOUSTON (IAH):

... From over RIICE on IAH R-313 to BRKMN, to MLRRR, to LYYTE.

LANDING RUNWAY 26L/R or 27:

... Fly heading 085° for vectors to final approach course.

LANDING ALL OTHER RUNWAYS:

... Expect vectors to final approach course at or prior to LYYTE.

FOR ALL OTHER AIRPORTS:

... From over RIICE on IAH R-313 to BRKMN, thence as depicted to LYYTE expect vectors to final approach course at or prior to LYYTE.

(WHAEL.PIEGY1) 22363

AL-5573 (FAA)

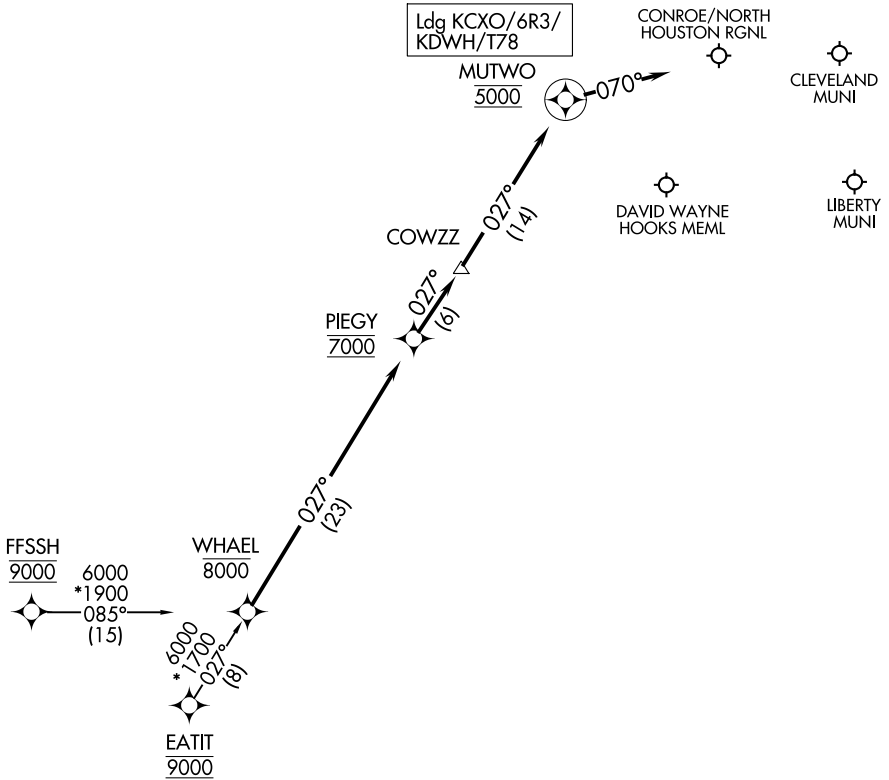
# PIEGY ONE ARRIVAL (RNAV)

HOUSTON, TEXAS

HOUSTON APP CON  
119.7 281.4  
CXO ATIS  
118.325  
DWH ATIS  
128.375

RNAV 1 - DME/DME/IRU or GPS.

RADAR required.



NOTE: Chart not to scale.

## ARRIVAL ROUTE DESCRIPTION

EATIT TRANSITION (EATIT.PIEGY1)  
FFSSH TRANSITION (FFSSH.PIEGY1)

LANDING ALL AIRPORTS: From WHAEL on track 027° to cross PIEGY at 7000, then on track 027° to COWZZ, then on track 027° to cross MUTWO at 5000, then on track 070°. Expect RADAR vectors to final approach course.

PIEGY ONE ARRIVAL (RNAV)

HOUSTON, TEXAS

(WHAEL.PIEGY1) 29DEC22

SC-5, 22 FEB 2024 to 21 MAR 2024

SC-5, 22 FEB 2024 to 21 MAR 2024