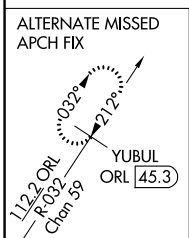
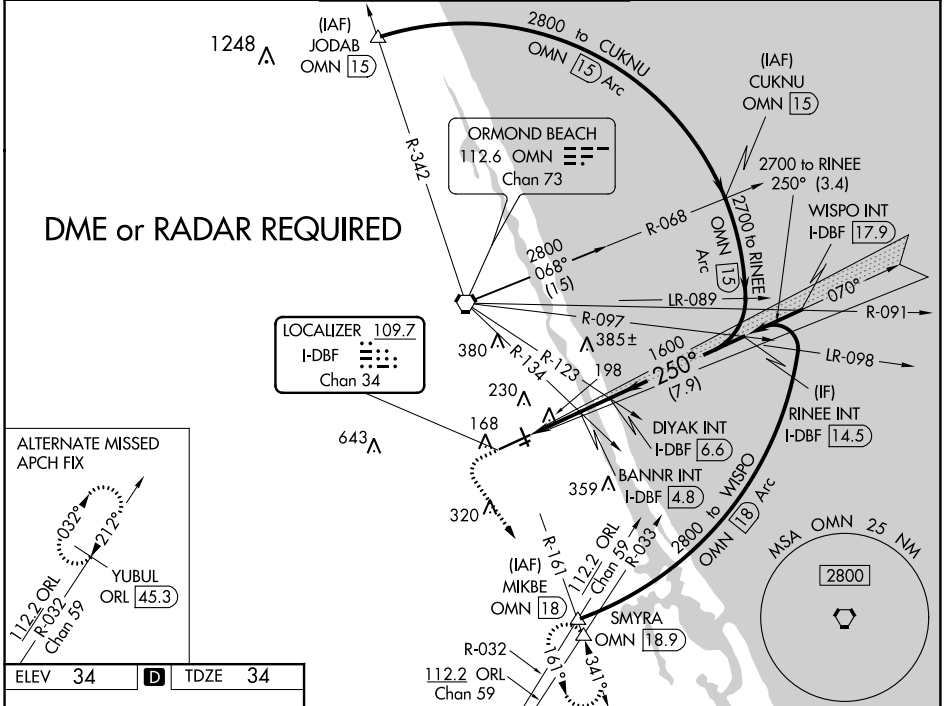


LOC/DME I-DBF 109.7 Chan 34	APP CRS 250°	Rwy Idg TDZE 34 Apt Elev 34	10293
--	------------------------	--	--------------

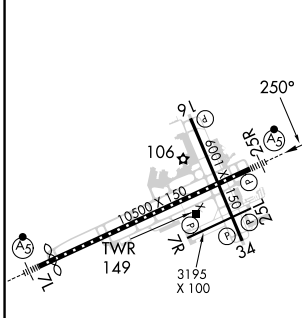
ILS or LOC RWY 25R

DAYTONA BEACH INTL (DAB)

	MALSR MISSED APPROACH: Climb to 500 then climbing left turn to 3000 on heading 150° and OMN VORTAC R-161 to SMYRA INT/OMN 18.9 DME and hold, continue climb-in-hold to 3000.			
	ATIS 132.875	DAYTONA APP CON 125.8 269.075	DAYTONA TOWER 120.7 257.8	GND CON 121.9 348.6

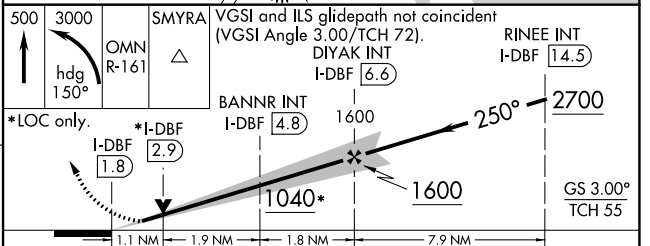


ELEV 34	D	TDZE 34
---------	----------	---------



TDZ/CL Rwy 7L
HIRL Rwy 7L-25R
MIRL Rws 7R-25L and 16-34
REIL Rws 7R, 16, 25L and 34

FAF to MAP 4.8 NM					
Knots	60	90	120	150	180
Min:Sec	4:48	3:12	2:24	1:55	1:36



CATEGORY	A	B	C	D
S-ILS 25R	234-1/2		200 (200-1/2)	
S-LOC 25R	1040-3/4 1006 (1100-3/4)	1040-1 1006 (1100-1)	1040-2 1/2	1006 (1100-2 1/2)
C CIRCLING	1040-1 1/4 1006 (1100-1 1/4)	1040-1 1/2 1006 (1100-1 1/2)	1040-3	1006 (1100-3)
BANNR FIX MINIMUMS (DUAL VOR RECEIVERS or DME REQUIRED)				
S-LOC 25R	440-1/2	406 (500-1/2)	440-3/4	406 (500-3/4)
C CIRCLING	540-1	506 (600-1)	680-1 1/4 646 (700-1 1/4)	700-2 666 (600-2)

SE-3, 22 FEB 2024 to 21 MAR 2024

SE-3, 22 FEB 2024 to 21 MAR 2024

LOC I-DAB 109.7	APP CRS 070°	Rwy Idg TDZE Apt Elev	9810 30 34
---------------------------	------------------------	-----------------------------	---------------------------------------

ILS or LOC RWY 7L

DAYTONA BEACH INTL (DAB)

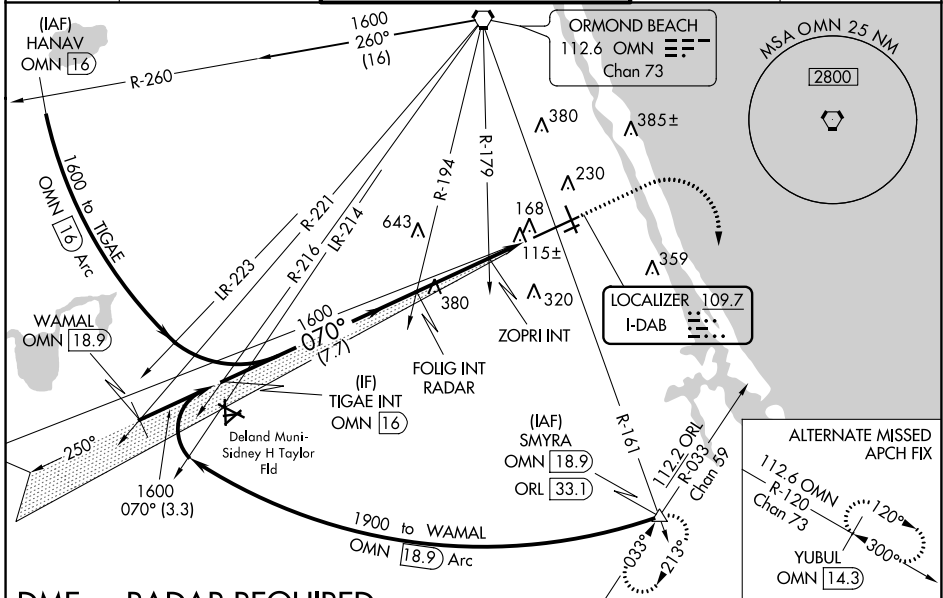
⚠ Inoperative table does not apply to S-ILS 07L. Helicopter visibility reduction below RVR 4000 NA. For inop MALSR, increase S-LOC 07L Cat A and B and ZOPRI fix minimums S-LOC 07L all Cats visibility to RVR 5500. Autopilot coupled approach NA below 535.

MALSR

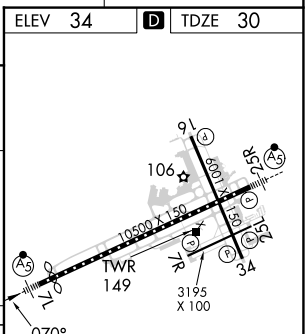
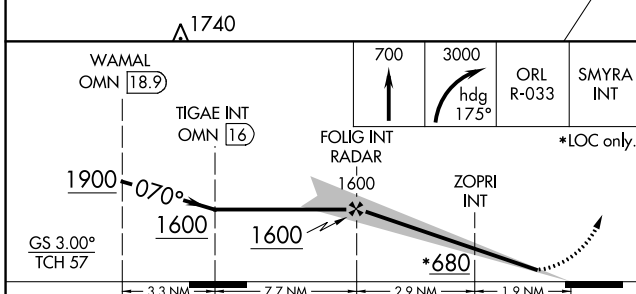


MISSED APPROACH: Climb to 700 then climbing right turn to 3000 on heading 175° and ORL VORTAC R-033 to SMYRA/ORL 33.1 DME and hold.

ATIS 132.875	DAYTONA APP CON 125.8 269.075	DAYTONA TOWER 120.7 257.8	GND CON 121.9 348.6	CLNC DEL 119.3
------------------------	---	-------------------------------------	-------------------------------	--------------------------



DME or RADAR REQUIRED



CATEGORY	A		B		C		D	
S-ILS 07L	230/40				200 (200-¾)			
S-LOC 07L	680-40	650 (700-¾)	680-1⅛		650 (700-1⅞)			
◻ CIRCLING	680-1	646 (700-1)	646 (700-1⅞)		666 (700-2)			
ZOPRI FIX MINIMUMS (DUAL VOR RECEIVERS REQUIRED)								
S-LOC 07L	380/40		350 (400-¾)		680-1¾			
◻ CIRCLING	540-1	506 (600-1)	646 (700-1¾)		666 (700-2)			

TDZ/CL Rwy 7L					
HIRL Rwy 7L-25R					
MIRL Rws 7R-25L and 16-34					
REIL Rws 7R, 16, 25L and 34					
FAF to MAP 4.8 NM					
Knots	60	90	120	150	180
Min:Sec	4:48	3:12	2:24	1:55	1:36

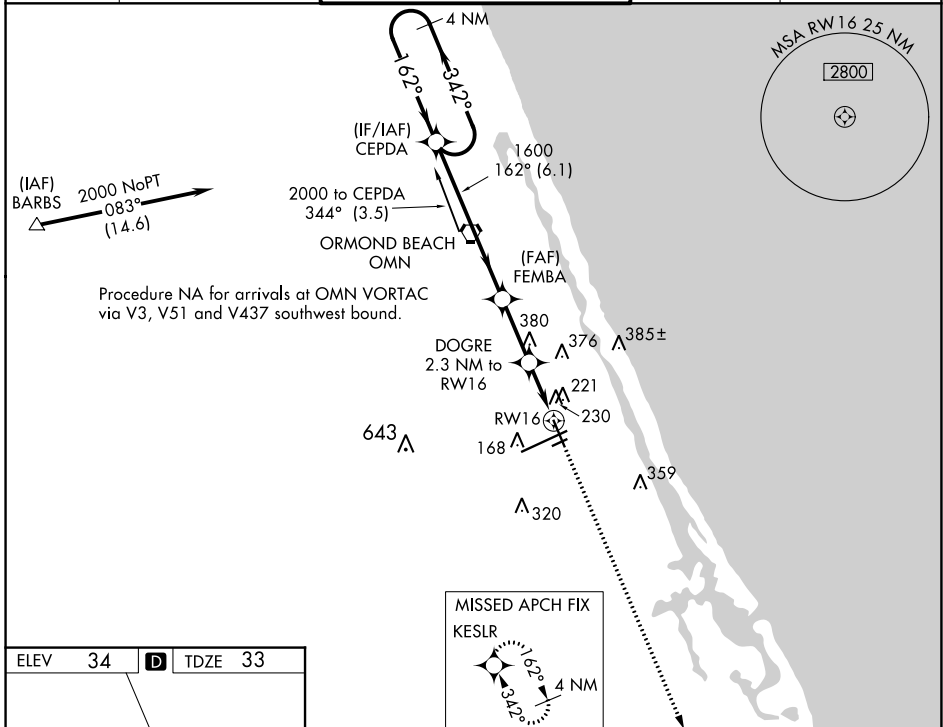
WAAS CH 45529 W 16A	APP CRS 162°	Rwy Idg TDZE Apt Elev	5969 33 34
---	------------------------	-----------------------------	---------------------------------------

RNAV (GPS) RWY 16

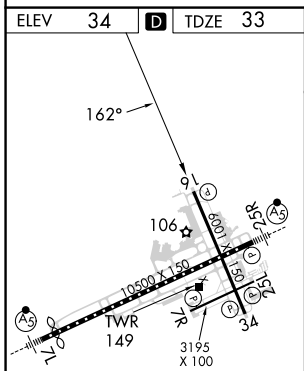
DAYTONA BEACH INTL (DAB)

<p>Baro-VNAV NA below -15° C (5° F). DME/DME RNP-0.3 NA. Helicopter visibility reduction below ¾ SM NA.</p>	<p>MISSED APPROACH: Climb to 1700 direct KESLR and hold.</p>
---	--

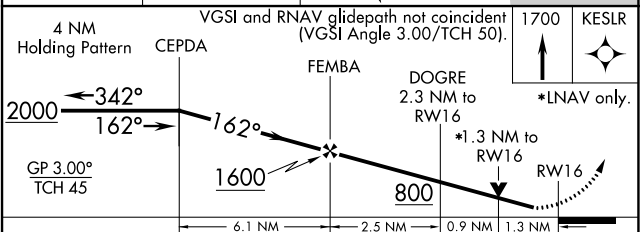
<p>ATIS 132.875</p>	<p>DAYTONA APP CON 125.8 269.075</p>	<p>DAYTONA TOWER 120.7 257.8</p>	<p>GND CON 121.9 348.6</p>	<p>CLNC DEL 119.3</p>
--------------------------------	---	---	---------------------------------------	----------------------------------



Procedure NA for arrivals at OMN VORTAC via V3, V51 and V437 southwest bound.



TDZ/CL Rwy 7L
HIRL Rwy 7L-25R
REIL Rwy 7R, 16, 25L and 34
MIRL Rwy 7R-25L and 16-34



CATEGORY	A	B	C	D
LPV DA	358-1¼		325 (400-1¼)	
LNAV/VNAV DA	479-1½		446 (500-1½)	
LNAV MDA	500-1	467 (500-1)	500-1¼ 467 (500-1¼)	500-1½ 467 (500-1½)
C CIRCLING	540-1½	506 (600-1½)	680-1¾ 646 (700-1¾)	700-2 666 (700-2)

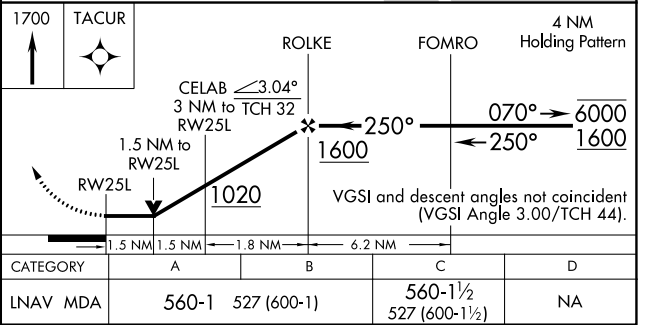
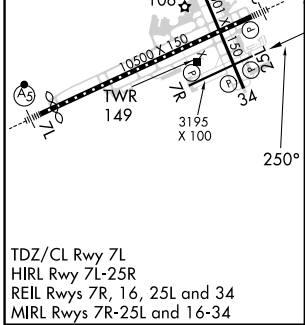
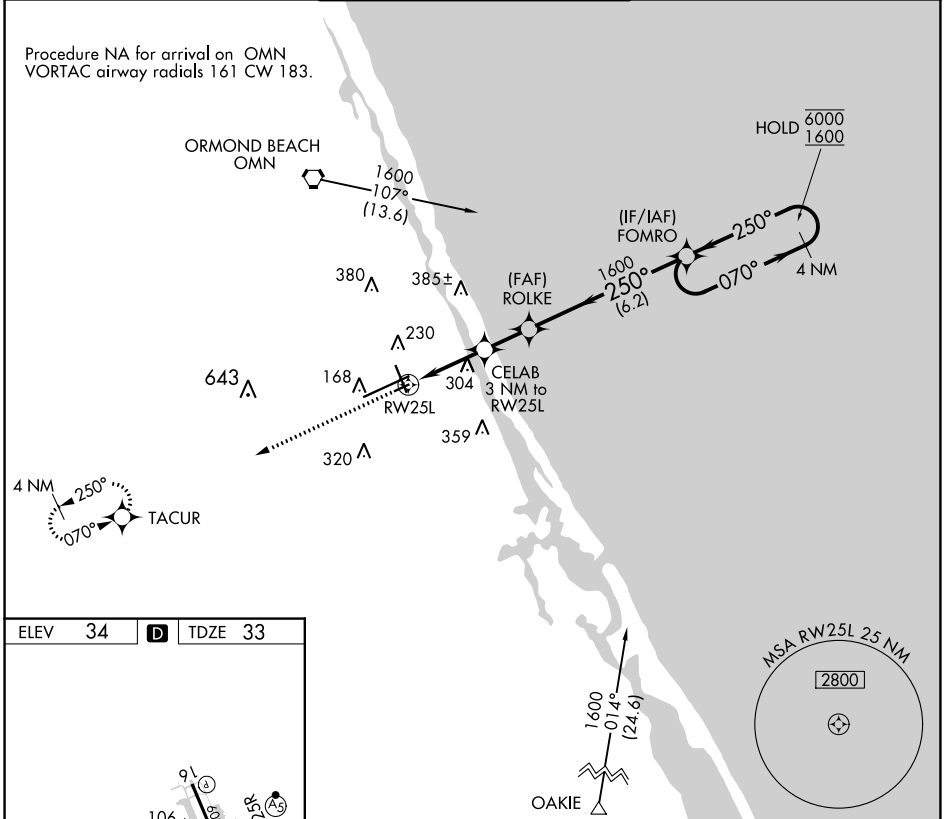
APP CRS	Rwy Idg	3195
250°	TDZE	33
	Apt Elev	34

RNAV (GPS) RWY 25L

DAYTONA BEACH INTL (DAB)

RNP APCH-GPS.		MISSED APPROACH: Climb to 1700 direct TACUR and hold.	
Rwy 25L helicopter visibility reduction below 3/4 SM NA.			

ATIS	DAYTONA APP CON	DAYTONA TOWER	GND CON	CLNC DEL
132.875	125.8 269.075	120.7 257.8	121.9 348.6	119.3



SE-3, 22 FEB 2024 to 21 MAR 2024

SE-3, 22 FEB 2024 to 21 MAR 2024

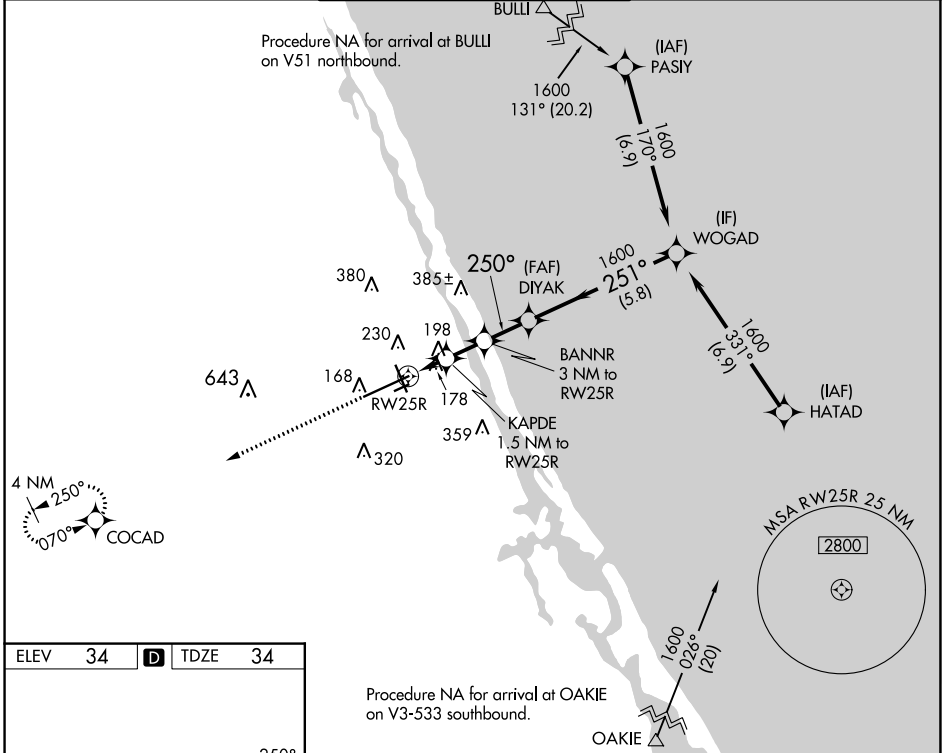
WAAS CH 77533 W25A	APP CRS 250°	Rwy Idg 10293 TDZE 34 Apt Elev 34
--	------------------------	--

RNAV (GPS) RWY 25R

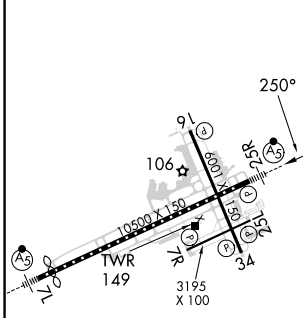
DAYTONA BEACH INTL (DAB)

DME/DME RNP-0.3 NA.		MALSR 	MISSED APPROACH: Climb to 1700 direct COCAD and hold.	
---------------------	--	-----------	---	--

ATIS 132.875	DAYTONA APP CON 125.8 269.075	DAYTONA TOWER 120.7 257.8	GND CON 121.9 348.6	CLNC DEL 119.3
------------------------	---	-------------------------------------	-------------------------------	--------------------------



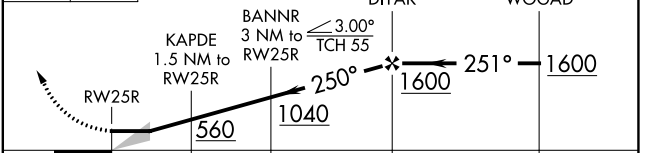
ELEV 34	D	TDZE 34
---------	----------	---------



Procedure NA for arrival at OAKIE on V3-533 southbound.

OAKIE

1700 COCAD VGSI and descent angles not coincident (VGSI Angle 3.00/TCH 72)



		A	B	C	D
CATEGORY		A	B	C	D
LP	MDA	440- ¹ / ₂	407 (500- ¹ / ₂)	440- ³ / ₄	407 (500- ³ / ₄)
LNAV	MDA	460- ¹ / ₂	426 (500- ¹ / ₂)	460- ³ / ₄	426 (500- ³ / ₄)
C	CIRCLING	540-1	506 (600-1)	680- ¹ / ₄ 646 (700- ¹ / ₄)	700-2 666 (700-2)

TDZ/CL Rwy 7L
HIRL Rwy 7L-25R
MIRL Rwys 7R-25L and 16-34
REIL Rwys 7R, 16, 25L and 34

WAAS CH 78221 W34A	APP CRS 342°	Rwy Idg TDZE Apt Elev	6001 34 34
--	------------------------	-----------------------------	---------------------------------------

RNAV (GPS) RWY 34

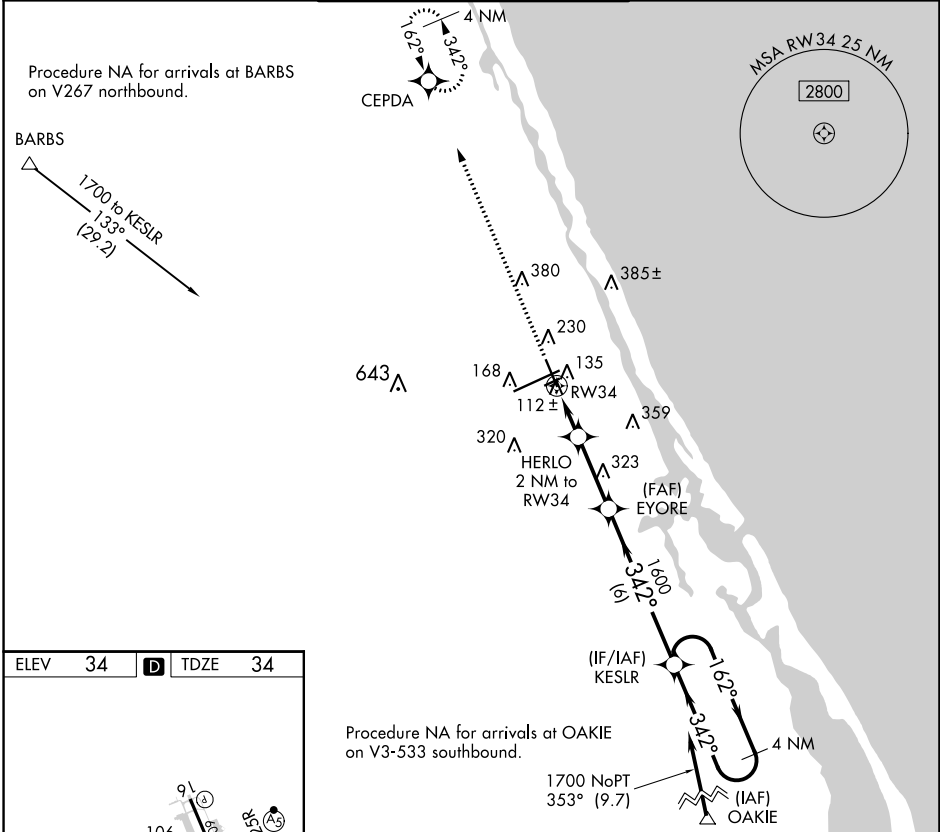
DAYTONA BEACH INTL (DAB)

RNP APCH-GPS.

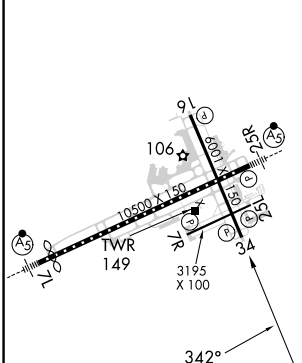
Rwy 34 helicopter visibility reduction below 1 SM NA. Procedure NA at night.

MISSED APPROACH: Climb to 2000 direct CEPDA and hold.

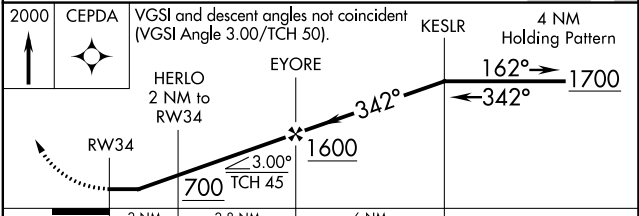
ATIS 132.875	DAYTONA APP CON 125.8 269.075	DAYTONA TOWER 120.7 257.8	GND CON 121.9 348.6	CLNC DEL 119.3
------------------------	---	-------------------------------------	-------------------------------	--------------------------



ELEV 34	D	TDZE 34
---------	----------	---------



TDZ/CL Rwy 7L	HIRL Rwy 7L-25R	REIL Rwy 7R, 16, 25L and 34	MIRL Rwy 7R-25L and 16-34
---------------	-----------------	-----------------------------	---------------------------



CATEGORY	A	B	C	D
LP MDA	380-1 346 (400-1)			
LNAV MDA	420-1 386 (400-1)		420-1½ 386 (400-1½)	

SE-3, 22 FEB 2024 to 21 MAR 2024

SE-3, 22 FEB 2024 to 21 MAR 2024

WAAS CH 45500 W07A	APP CRS 070°	Rwy Idg TDZE Apt Elev	9810 30 34
--	------------------------	-----------------------------	---------------------------------------

RNAV (GPS) RWY 7L

DAYTONA BEACH INTL (DAB)

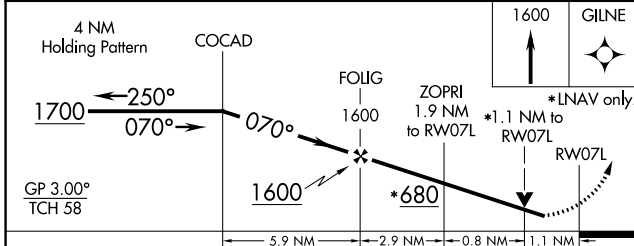
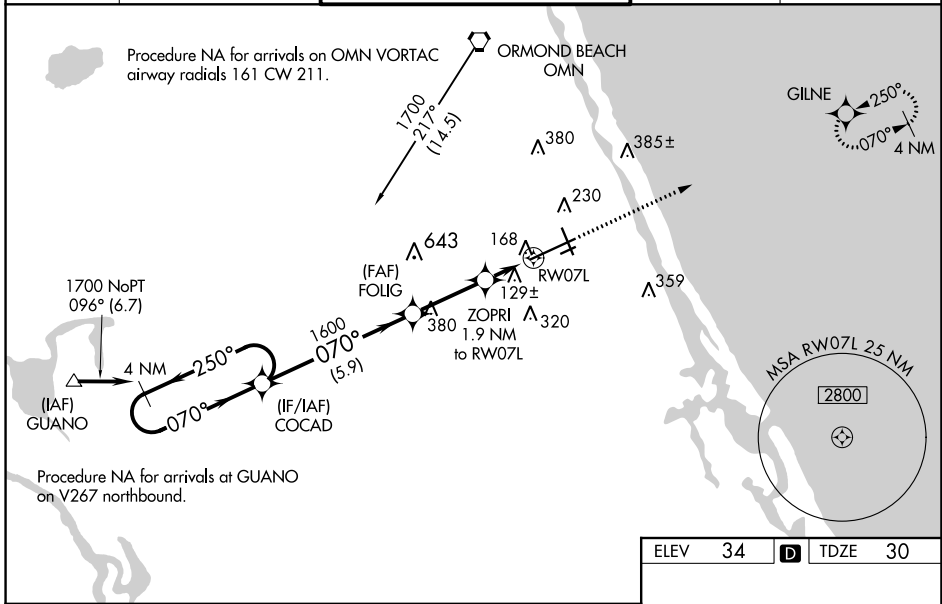
▼

Inoperative table does not apply to LPV all Cats. For uncompensated Baro-VNAV systems, LNAV/VNAV NA below -15°C (5°F) or above 43°C (109°F). DME/DME RNP-0.3 NA. Helicopter visibility reduction below ¾ SM NA. For inoperative MALSR, increase LNAV/VNAV visibility all Cats to ¼ and increase LNAV Cats A/B visibility to RVR 5000 and Cats C/D visibility to RVR 6000.

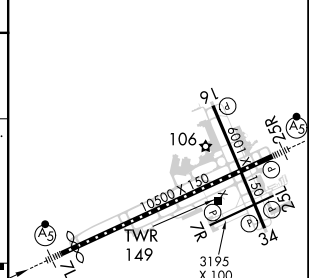
MALSR

MISSED APPROACH: Climb to 1600 direct GILNE and hold.

ATIS 132.875	DAYTONA APP CON 125.8 269.075	DAYTONA TOWER 120.7 257.8	GND CON 121.9 348.6	CLNC DEL 119.3
------------------------	---	-------------------------------------	-------------------------------	--------------------------



ELEV 34	D	TDZE 30
---------	----------	---------



CATEGORY	A	B	C	D
LPV DA		230/40	200 (200-¾)	
LNAV/VNAV DA		429/45	399 (400-7/8)	
LNAV MDA		420/40	390 (400-¾)	
C CIRCLING	540-1	506 (600-1)	680-1¾ 646 (700-1¾)	700-2 666 (700-2)

TDZ/CL Rwy 7L
HIRL Rwy 7L-25R
REIL Rwy 7R, 16, 25L, and 34
MIRL Rwy 7R-25L and 16-34

SE-3, 22 FEB 2024 to 21 MAR 2024

SE-3, 22 FEB 2024 to 21 MAR 2024

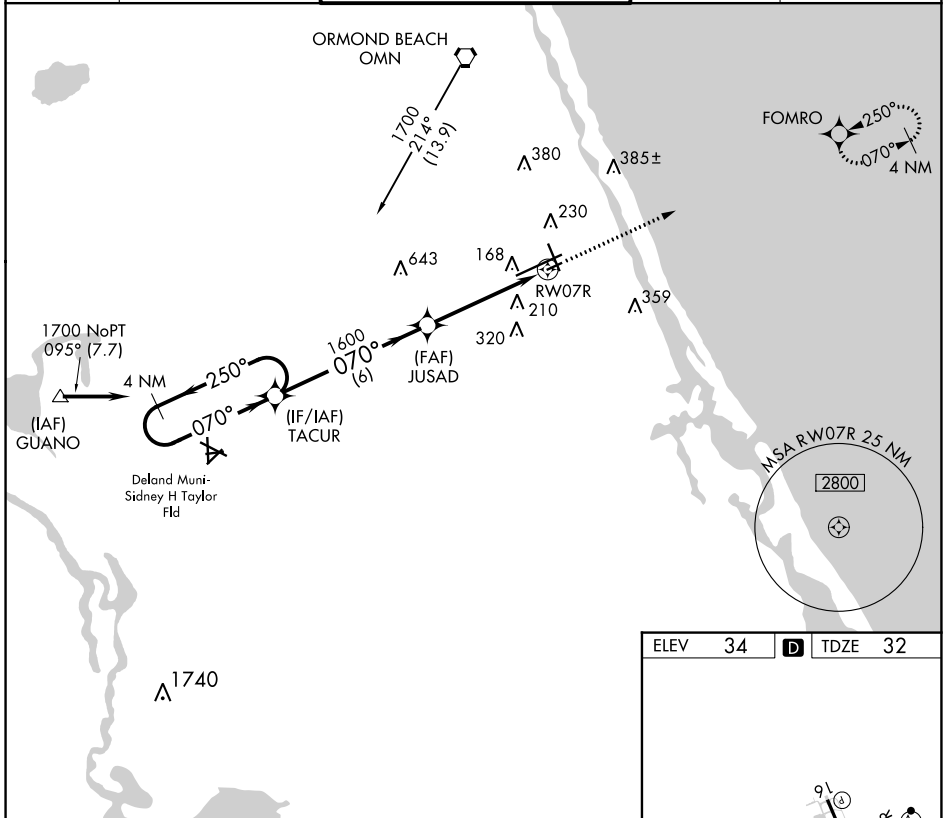
APP CRS	Rwy Idg	3195
070°	TDZE	32
	Apt Elev	34

RNAV (GPS) RWY 7R

DAYTONA BEACH INTL (DAB)

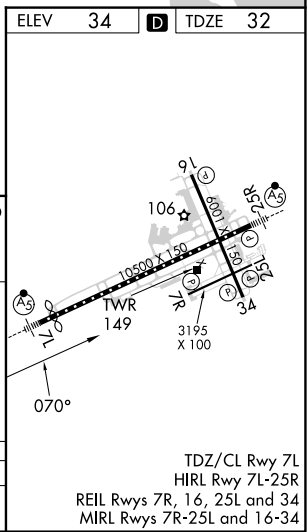
RNP APCH.		MISSED APPROACH: Climb to 1600 direct FOMRO WP and hold.
Rwy 7R helicopter visibility reduction below 3/4 SM NA.		

ATIS 132.875	DAYTONA APP CON 125.8 269.075	DAYTONA TOWER 120.7 257.8	GND CON 121.9 348.6	CLNC DEL 119.3
------------------------	---	-------------------------------------	-------------------------------	--------------------------



SE-3, 22 FEB 2024 to 21 MAR 2024

SE-3, 22 FEB 2024 to 21 MAR 2024



4 NM Holding Pattern		VGSI and descent angles not coincident (VGSI Angle 3.00/TCH 48).		1600	FOMRO
TACUR		JUSAD			
1700 ← 250° 070° →		3.04° TCH 40			
		1600		RWY 07R	
		6 NM		4.7 NM	

CATEGORY	A	B	C	D
LNAV MDA	480-1	448 (500-1)	480-1 1/4 448 (500-1 1/4)	NA