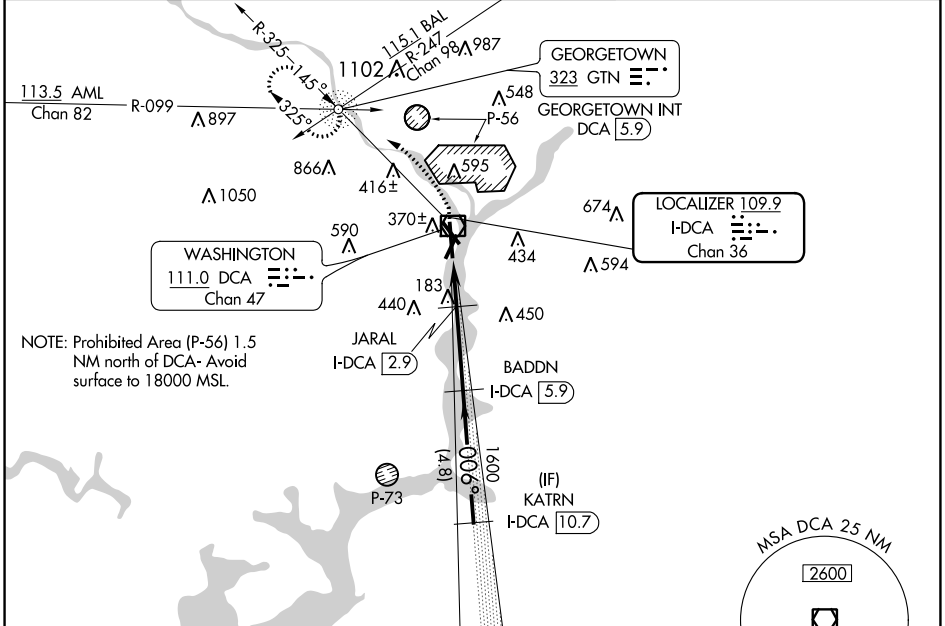


LOC/DME I-DCA	APP CRS	Rwy Idg	6869
109.9	006°	TDZE	14
Chan 36		Apt Elev	15

COPTER ILS or LOC/DME RWY 1

RONALD REAGAN WASHINGTON NTL (DCA)

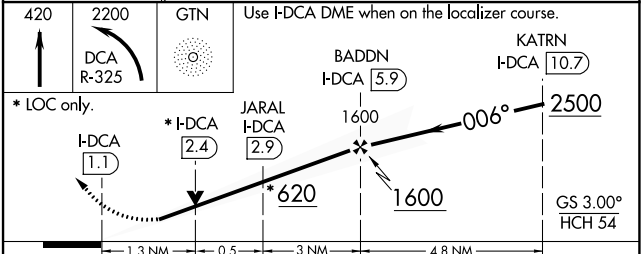
NA	POTOMAC APP CON D-ATIS 132.65 119.85 239.25 (WEST/SOUTH) 124.2 360.8 (EAST)		WASHINGTON TOWER 119.1 257.6	GND CON 121.7 257.6	CLNC DEL 128.25	CPDLC
	MISSED APPROACH: Climb to 420 then climbing left turn to 2200 on DCA VOR/DME R-325 to GTN NDB/INT/DCA 5.9 DME and hold.					



NE-3, 22 FEB 2024 to 21 MAR 2024

NE-3, 22 FEB 2024 to 21 MAR 2024

ELEV 15	D	TDZE 14
REIL Rwys 4, 22, 15 and 33 HIRL Rwys 1-19 and 15-33 MIRL Rwy 4-22 TDZ/CL Rwy 1		



CATEGORY	COPTER	
H-ILS 1	114/12	100 (100-1/8)
H-LOC 1	480/24	466 (500-1/2)
H-ILS 1	CAT II RA 106	

COPTER ILS CATEGORY II - SPECIAL AIRCREW & AIRCRAFT CERTIFICATION REQUIRED

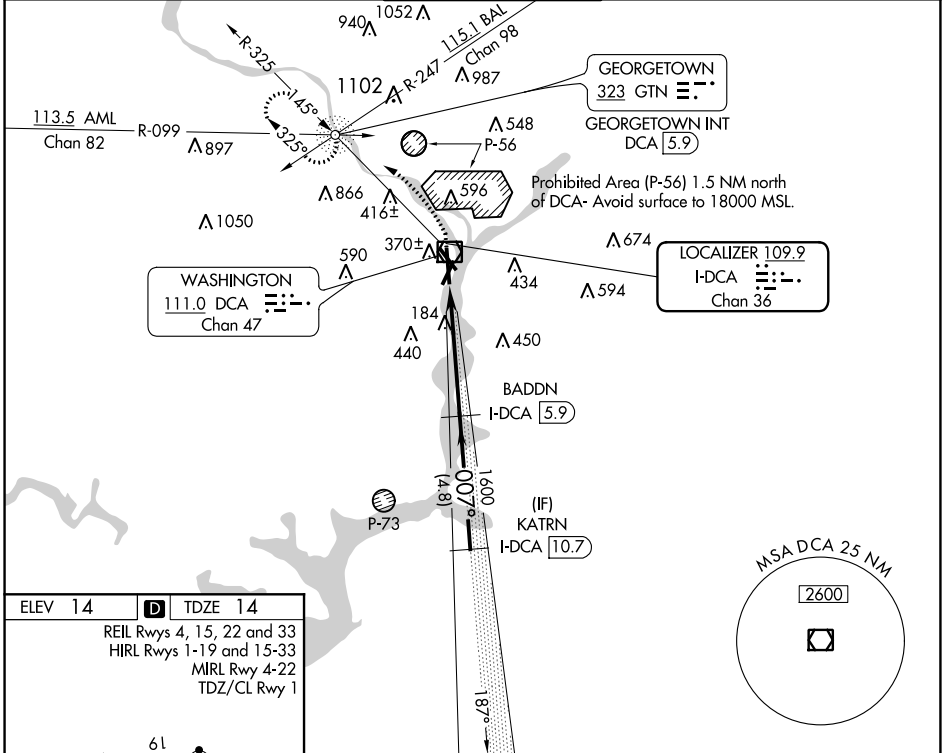
LOC/DME I-DCA 109.9 Chan 36	APP CRS 007°	Rwy Idg 6869 TDZE 14 Apt Elev 14
---	------------------------	---

ILS RWY 1 (CAT II)

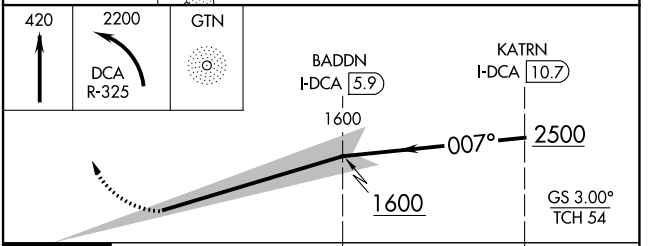
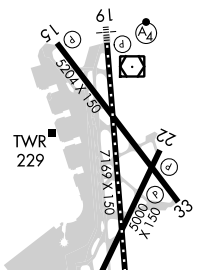
RONALD REAGAN WASHINGTON NTL (DCA)

DME required. RADAR required for procedure entry.		ALSF-2 	MISSED APPROACH: Climb to 420 then climbing left turn to 2200 on DCA VOR/DME R-325 to GTN NDB/INT/DCA 5.9 DME and hold.		
---	--	------------	---	--	--

D-ATIS 132.65	POTOMAC APP CON 119.85 239.25 (WEST/SOUTH) 124.2 360.8 (EAST)	WASHINGTON TOWER 119.1 257.6	GND CON 121.7 257.6	CLNC DEL 128.25	CPDLC
-------------------------	---	--	-------------------------------	---------------------------	-------



ELEV 14	D	TDZE 14
REIL Rwys 4, 15, 22 and 33 HIRL Rwys 1-19 and 15-33 MIRL Rwy 4-22 TDZ/CL Rwy 1		



CATEGORY	A	B	C	D
S-ILS 1	RA 106/12 100 DA 114			

CATEGORY II ILS- SPECIAL AIRCREW & AIRCRAFT CERTIFICATION REQUIRED

NE-3, 22 FEB 2024 to 21 MAR 2024

NE-3, 22 FEB 2024 to 21 MAR 2024

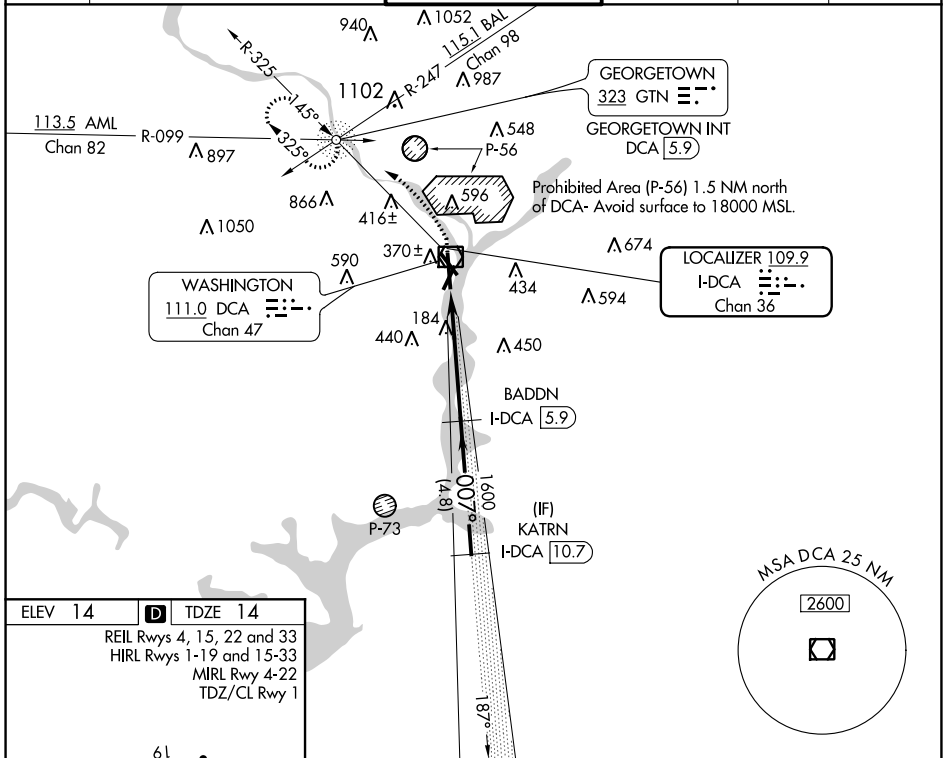
LOC/DME I-DCA 109.9 Chan 36	APP CRS 007°	Rwy Idg 6869 TDZE 14 Apt Elev 14
---	------------------------	---

ILS RWY 1 (SA CAT I)

RONALD REAGAN WASHINGTON NTL (DCA)

DME required. RADAR required for procedure entry. Requires specific OPSPEC, MSPEC, or LOA approval.		ALSF-2 	MISSED APPROACH: Climb to 420 then climbing left turn to 2200 on DCA VOR/DME R-325 to GTN NDB/INT/DCA 5.9 DME and hold.		
--	--	------------	---	--	--

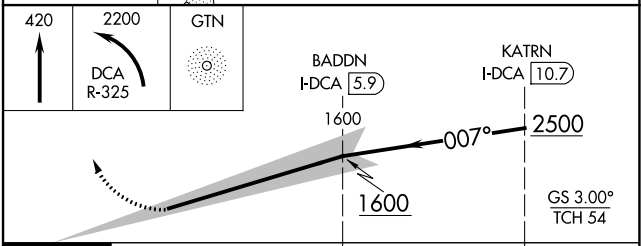
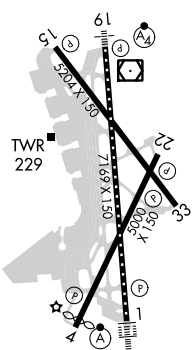
D-ATIS 132.65	POTOMAC APP CON 119.85 239.25 (WEST/SOUTH) 124.2 360.8 (EAST)	WASHINGTON TOWER 119.1 257.6	GND CON 121.7 257.6	CLNC DEL 128.25	CPDLC
-------------------------	---	--	-------------------------------	---------------------------	-------



NE-3, 22 FEB 2024 to 21 MAR 2024

NE-3, 22 FEB 2024 to 21 MAR 2024

ELEV 14	D	TDZE 14
REIL Rwys 4, 15, 22 and 33 HIRL Rwys 1-19 and 15-33 MIRL Rwy 4-22 TDZ/CL Rwy 1		



100%	4.8 NM	4.8 NM		
CATEGORY	A	B	C	D
S-ILS 1	RA 156/14		150 DA 164	

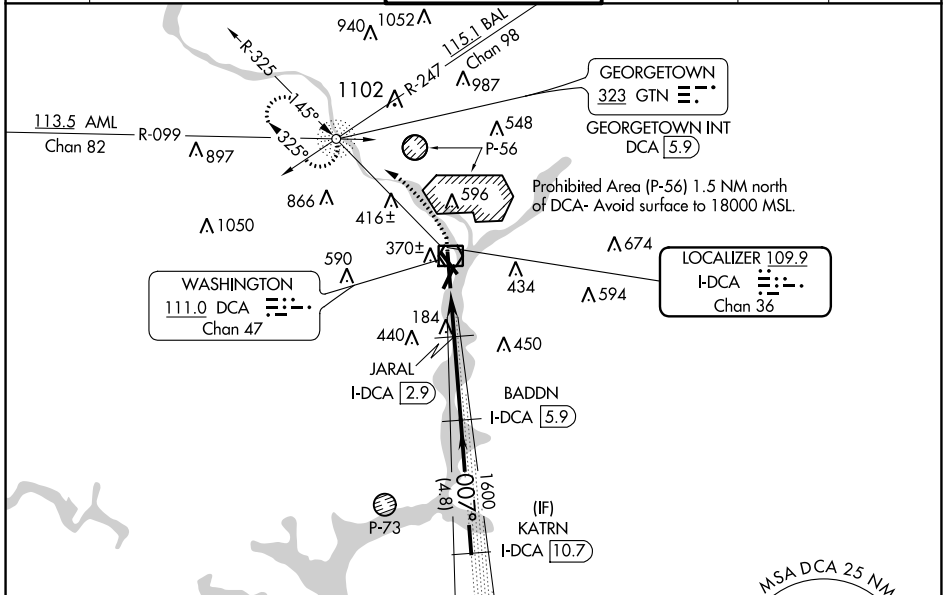
SA CATEGORY I ILS- SPECIAL AIRCREW & AIRCRAFT CERTIFICATION REQUIRED

LOC/DME I-DCA 109.9 Chan 36	APP CRS 007°	Rwy Idg 6869 TDZE 14 Apt Elev 14
---	------------------------	---

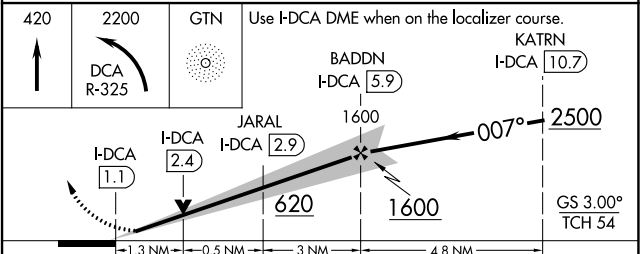
ILS or LOC RWY 1
RONALD REAGAN WASHINGTON NTL (DCA)

DME required. RADAR required for procedure entry.		ALSIF-2 	MISSED APPROACH: Climb to 420 then climbing left turn to 2200 on DCA VOR/DME R-325 to GTN NDB/INT/DCA 5.9 DME and hold.	
Circling NA northeast of Rwy 15-33. For inop ALS, increase S-LOC 1 Cats C and D visibility to 1 3/8 SM.				

D-ATIS 132.65	POTOMAC APP CON 119.85 239.25 (WEST/SOUTH) 124.2 360.8 (EAST)	WASHINGTON TOWER 119.1 257.6	GND CON 121.7 257.6	CLNC DEL 128.25	CPDLC
-------------------------	---	--	-------------------------------	---------------------------	-------



ELEV 14	D	TDZE 14
REIL Rwys 4, 15, 22 and 33 HIRL Rwys 1-19 and 15-33 MIRL Rwy 4-22 TDZ/CL Rwy 1		



FAF to MAP 4.8 NM					
Knots	60	90	120	150	180
Min:Sec	4:48	3:12	2:24	1:55	1:36
C CIRCLING	A		B		D
S-ILS 1	214/18				200 (200-1/2)
S-LOC 1	480/24	466 (500-1/2)	480/50	466 (500-1)	
	720-1	900-1 1/4	900-2 3/4	900-3	
	706 (800-1)	886 (900-1 1/4)	886 (900-2 3/4)	886 (900-3)	

NE-3, 22 FEB 2024 to 21 MAR 2024

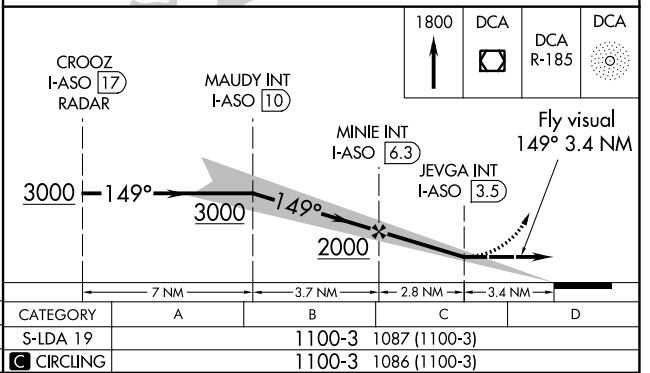
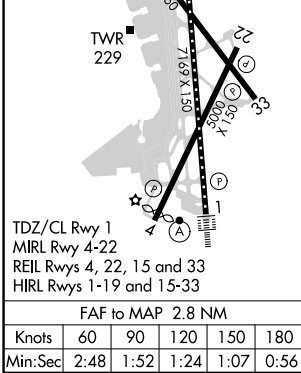
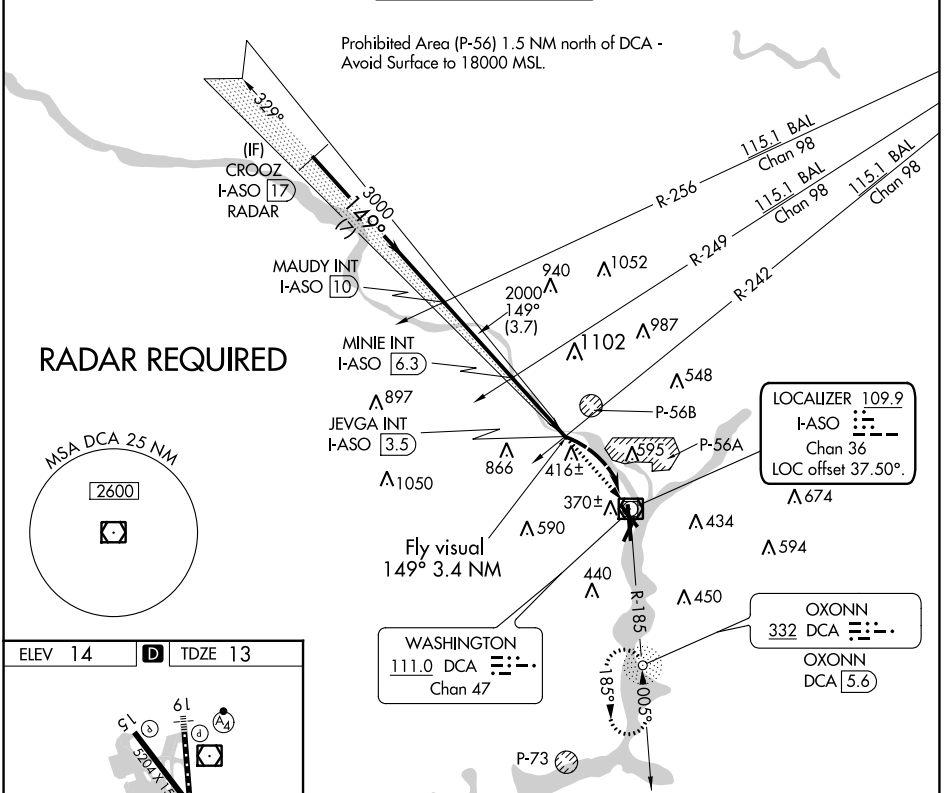
NE-3, 22 FEB 2024 to 21 MAR 2024

LOC/DME I-ASO 109.9 Chan 36	APP CRS 149°	Rwy Idg TDZE Apt Elev	6869 13 14
---	------------------------	-----------------------------	---------------------------------------

LDA Y RWY 19

RONALD REAGAN WASHINGTON NTL (DCA)

D-ATIS 132.65	POTOMAC APP CON 119.85 239.25 (WEST/SOUTH) 124.2 360.8 (EAST)	WASHINGTON TOWER 119.1 257.6	GND CON 121.7 257.6	CLNC DEL 128.25	CPDLC
	<p>Inoperative table does not apply. Circling NA northeast of Rwy 15-33. ADF or DME required.</p>				



NE-3, 22 FEB 2024 to 21 MAR 2024

NE-3, 22 FEB 2024 to 21 MAR 2024

LOC/DME I-VVWH 108.5 Chan 22	APP CRS 147°	Rwy Idg 6869 TDZE 13 Apt Elev 14
--	------------------------	---

LDA Z RWY 19

RONALD REAGAN WASHINGTON NTL (DCA)

⚠ Inop table does not apply. Circling NA northeast of Rwy 15-33. Rwy 19 helicopter visibility reduction below 1 SM NA. DME required.

MALSF
MISSED APPROACH: Climbing right turn to 3000 on DCA VOR/DME R-185 to BADDN/DCA VOR/DME 5.9 DME and hold, continue climb-in-hold to 3000.

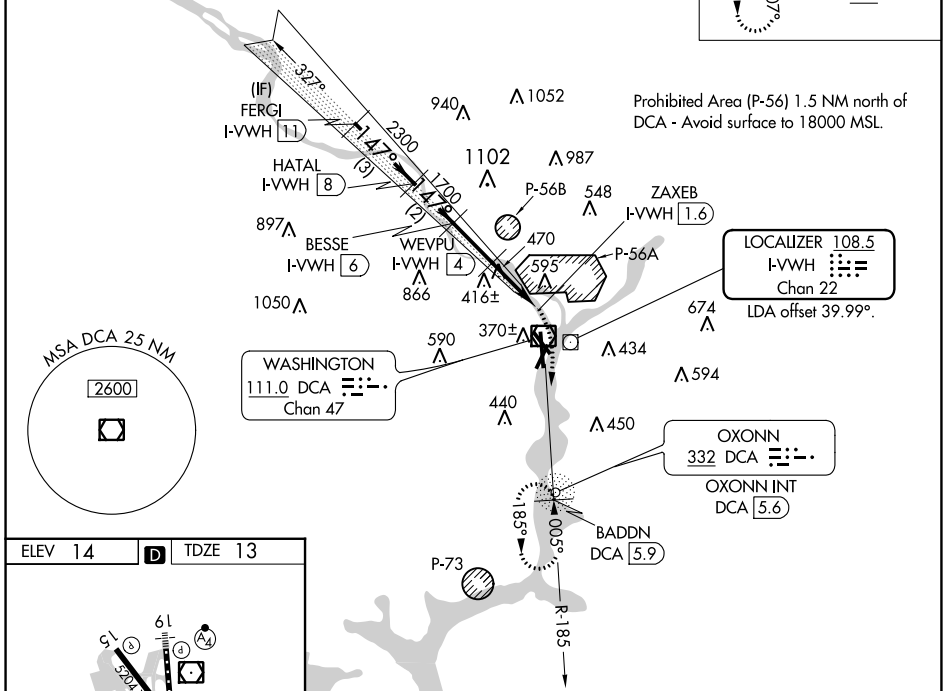
D-ATIS 132.65	POTOMAC APP CON 119.85 239.25 124.2 360.8 (WEST/SOUTH) (EAST)	WASHINGTON TOWER 119.1 257.6	GND CON 121.7 257.6	CLNC DEL 128.25	CPDLC
-------------------------	---	--	-------------------------------	---------------------------	-------

ALTERNATE MISSED APCH FIX

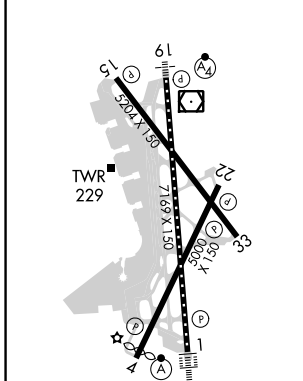


RADAR REQUIRED

Prohibited Area (P-56) 1.5 NM north of DCA - Avoid surface to 18000 MSL.



ELEV 14	D	TDZE 13
---------	----------	---------



TDZ/CL Rwy 1
MIRL Rwy 4-22
REIL Rwys 4, 22, 15 and 33
HIRL Rwys 1-19 and 15-33

	FERGI I-VVWH 11	HATAL I-VVWH 8	BESSE I-VVWH 6	WEVPU I-VVWH 4	ZAXEB I-VVWH 1.6	3000	BADDN DCA 5.9
	3000	2300	1700	1100			
	147°			3.04°	TCH 50		
	3 NM	2 NM	2 NM	2.4 NM	0.8		
CATEGORY	A		B		C		D
S-19	720/55		707 (800-1)		720-2		707 (800-2)
C CIRCLING	720-1		706 (800-1)		840-1½ 826 (900-1½)		900-3 886 (900-3)

NE-3, 22 FEB 2024 to 21 MAR 2024

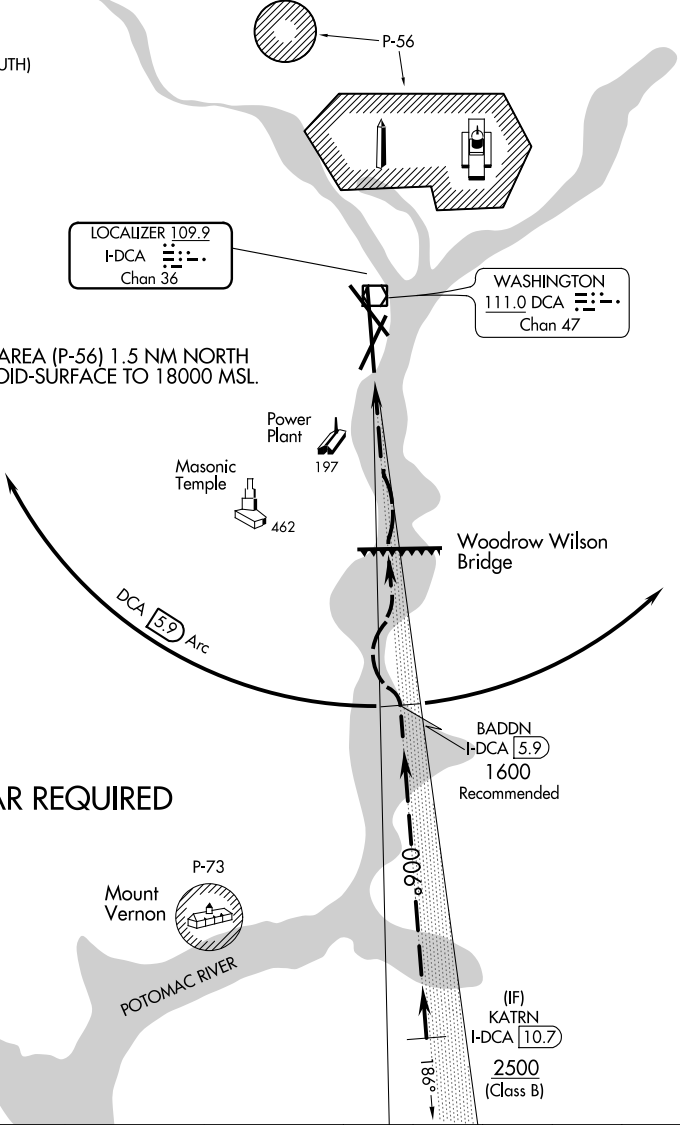
NE-3, 22 FEB 2024 to 21 MAR 2024

D-ATIS 132.65
 POTOMAC APP CON
 119.85 239.25 (WEST/SOUTH)
 124.2 360.8 (EAST)
 WASHINGTON TOWER
 119.1 257.6
 GND CON
 121.7 257.6
 CLNC DEL
 128.25
 CPDLC

LOCALIZER 109.9
 I-DCA Chan 36

WASHINGTON
 111.0 DCA Chan 47

NOTE: PROHIBITED AREA (P-56) 1.5 NM NORTH OF DCA-AVOID-SURFACE TO 18000 MSL.



RADAR REQUIRED

Vertical Guidance
 Navaid and Angle:
 I-DCA 3.00°

Weather Minimums: 3000
 feet ceiling and 4 mile
 visibility.

1 NM	2	3	4	5	6	7	8	9	10	11	12	13
------	---	---	---	---	---	---	---	---	----	----	----	----

Aircraft may proceed via DCA VOR/DME R-185 (inbound 005°), or via the ILS or LOC/DME RWY 1 approach to 5.9 DME, then follow the Potomac River to the airport.

NE-3, 22 FEB 2024 to 21 MAR 2024

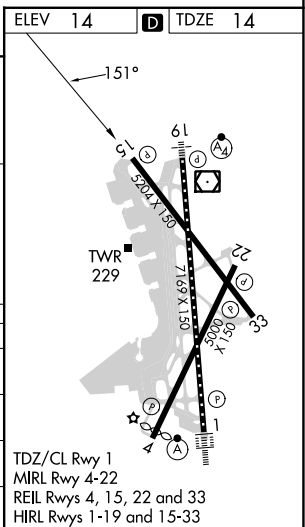
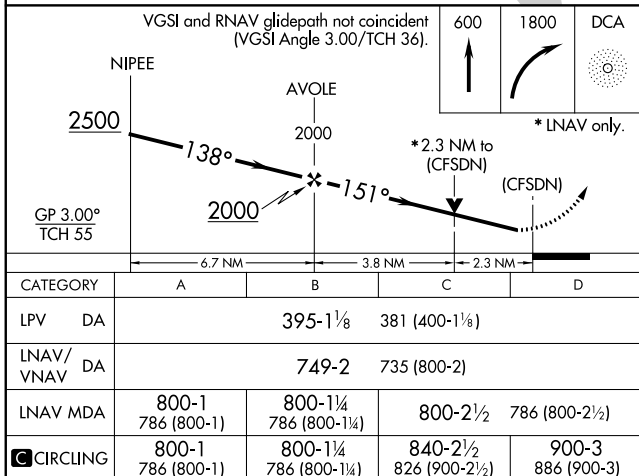
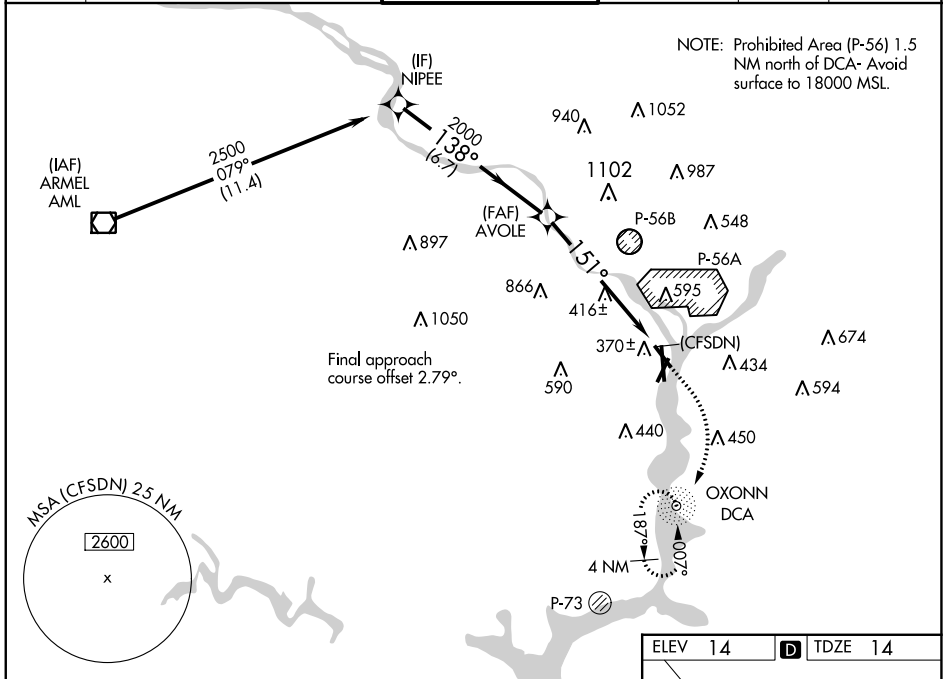
NE-3, 22 FEB 2024 to 21 MAR 2024

WAAS CH 70737 W15A	APP CRS 151°	Rwy Idg 5204 TDZE 14 Apt Elev 14
--	------------------------	---

RNAV (GPS) RWY 15

RONALD REAGAN WASHINGTON NTL (DCA)

RNP APCH.		MISSED APPROACH: (Do not exceed 210 KIAS until reaching 600 MSL) Climb to 600 then climbing right turn to 1800 direct DCA NDB and hold.		
<p>▼ Circling NA northeast of Rwy 15-33. Rwy 15 helicopter visibility reduction below 3/4 SM NA. For uncompensated Baro-VNAV systems, LNAV/VNAV NA below -11°C or above 54°C.</p> <p>▲</p>				
D-ATIS 132.65	POTOMAC APP CON 119.85 239.25 (WEST/SOUTH) 124.2 360.8 (EAST)	WASHINGTON TOWER 119.1 257.6	GND CON 121.7 257.6	CLNC DEL 128.25
		CPDLC		



NE-3, 22 FEB 2024 to 21 MAR 2024

NE-3, 22 FEB 2024 to 21 MAR 2024

APP CRS	Rwy Idg	5204
334°	TDZE	13
	Apt Elev	14

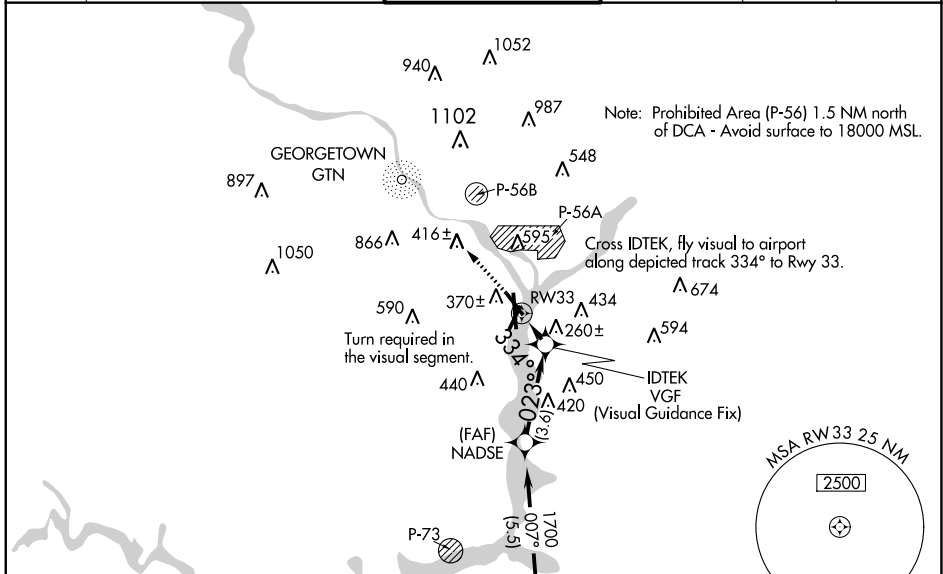
RNAV (GPS) RWY 33

RONALD REAGAN WASHINGTON NTL (DCA)

RNP APCH - GPS.
 RADAR required.

MISSED APPROACH: (Do not exceed 210K until Rwy 33)
 Climb to 2200 on the FMS lateral path to Rwy 33 and direct to GTN NDB and hold, continue climb-in-hold to 2200.

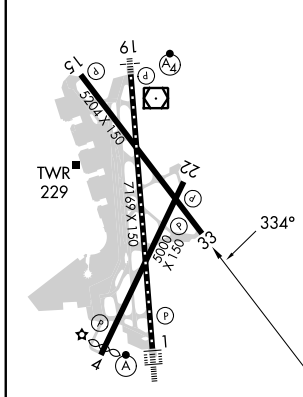
D-ATIS	POTOMAC APP CON	WASHINGTON TOWER	GND CON	CLNC DEL	CPDLC
132.65	119.85 239.25 (WEST/SOUTH) 124.2 360.8 (EAST)	119.1 257.6	121.7 257.6	128.25	



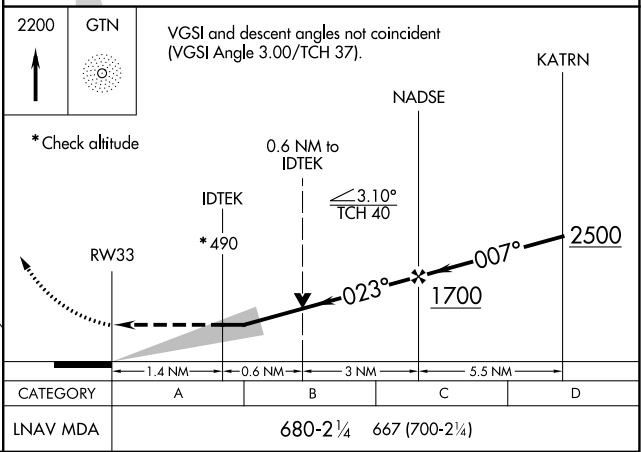
NE-3, 22 FEB 2024 to 21 MAR 2024

NE-3, 22 FEB 2024 to 21 MAR 2024

ELEV 14	D	TDZE 13
---------	----------	---------

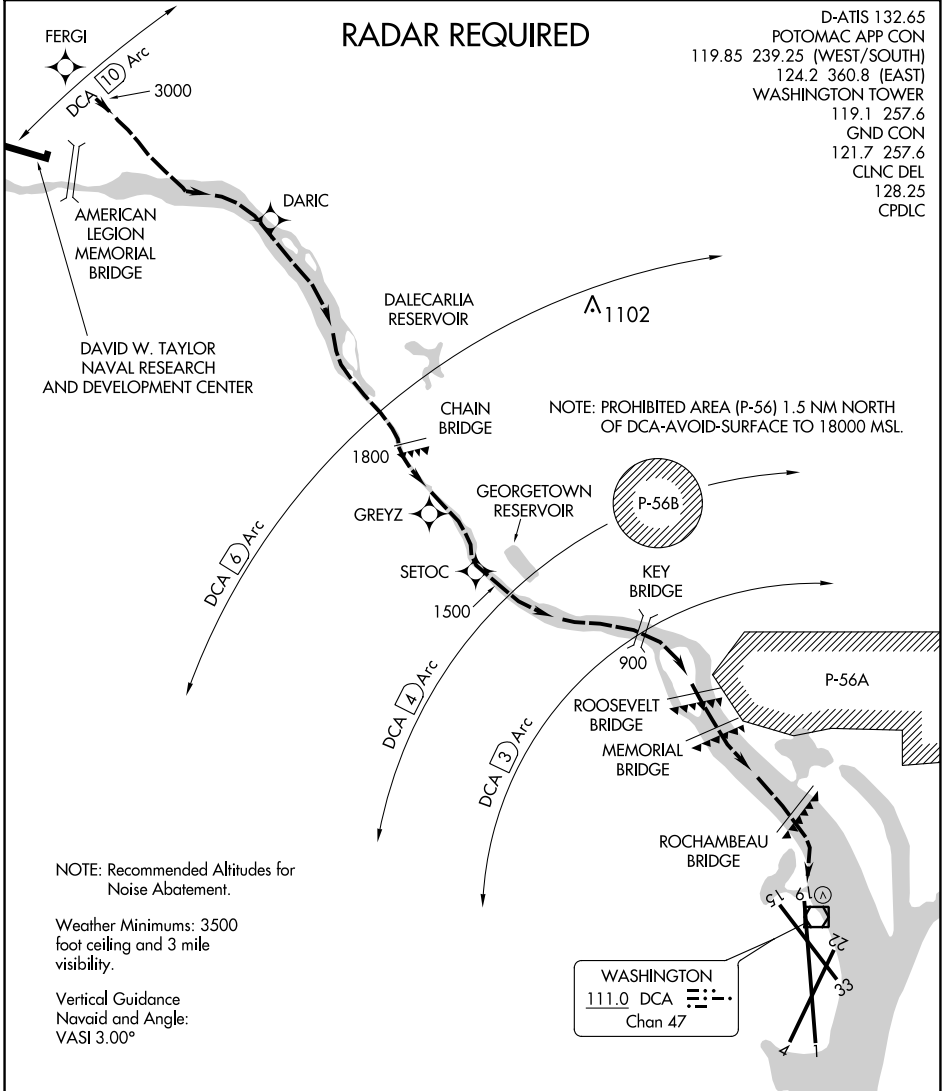


TDZ/CL Rwy 1
 MIRL Rwy 4-22
 REIL Rws 4, 15, 22 and 33
 HIRL Rws 1-19 and 15-33



RADAR REQUIRED

D-ATIS 132.65
 POTOMAC APP CON
 119.85 239.25 (WEST/SOUTH)
 124.2 360.8 (EAST)
 WASHINGTON TOWER
 119.1 257.6
 GND CON
 121.7 257.6
 CLNC DEL
 128.25
 CPDLC



NOTE: Recommended Altitudes for Noise Abatement.

Weather Minimums: 3500 foot ceiling and 3 mile visibility.

Vertical Guidance
 Navaid and Angle:
 VASI 3.00°

NOTE: PROHIBITED AREA (P-56) 1.5 NM NORTH OF DCA-AVOID-SURFACE TO 18000 MSL.

NE-3, 22 FEB 2024 to 21 MAR 2024

NE-3, 22 FEB 2024 to 21 MAR 2024

1 NM	2	3	4	5	6	7	8
------	---	---	---	---	---	---	---

RIVER VISUAL RWY 19

Aircraft may visually follow the river to the airport, or may proceed via the RNAV (RNP) RWY 19 Approach to SETOC waypoint, then follow the river to the airport.


NOTE: Clearance for visual approach does not authorize penetration of P-56.

APP CRS	Rwy Idg	6869
007°	TDZE	14
	Apt Elev	14

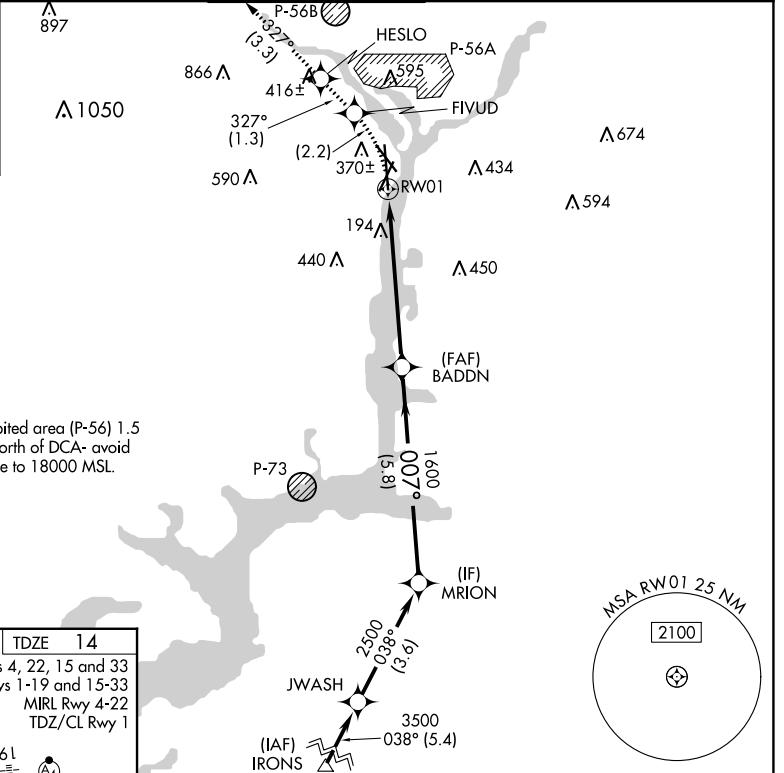
RNAV (RNP) RWY 1

RONALD REAGAN WASHINGTON NTL (DCA)

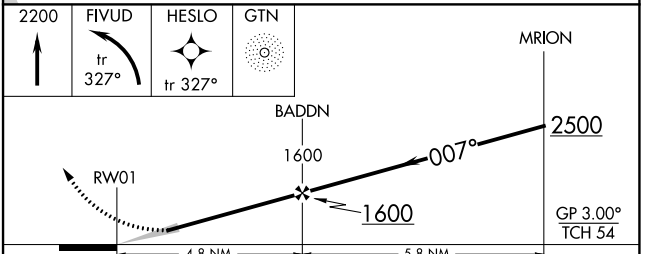
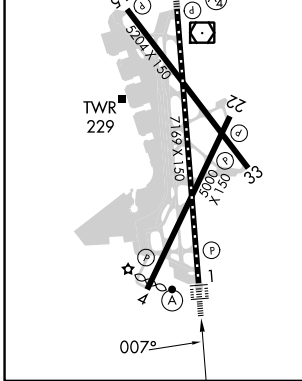
▽ For uncompensated Baro-VNAV systems, procedure NA below -10°C (14°F) or above 48°C (120°F). RF required. GPS required. Missed approach requires RNP less than 1.0. For inop ALS, increase RNP 0.30 all Cats visibility to 1¼ mile.

ALSF-2  **MISSED APPROACH:** (Do not exceed 185K until FIVUD) Climb to 2200 left turn to FIVUD and on track 327° to HESLO and on track 327° to GTN NDB and hold.

D-ATIS 132.65	POTOMAC APP CON 119.85 239.25 (WEST/SOUTH) 124.2 360.8 (EAST)	WASHINGTON TOWER 119.1 257.6	GND CON 121.7 257.6	CLNC DEL 128.25	CPDLC
-------------------------	---	--	-------------------------------	---------------------------	-------



ELEV 14	D	TDZE 14
REIL Rwy 4, 22, 15 and 33		
HIRL Rwy 1-19 and 15-33		
MIRL Rwy 4-22		
TDZ/CL Rwy 1		



CATEGORY	A	B	C	D
RNP 0.30 DA	552/60		538 (600-1¼)	

AUTHORIZATION REQUIRED

NE-3, 22 FEB 2024 to 21 MAR 2024

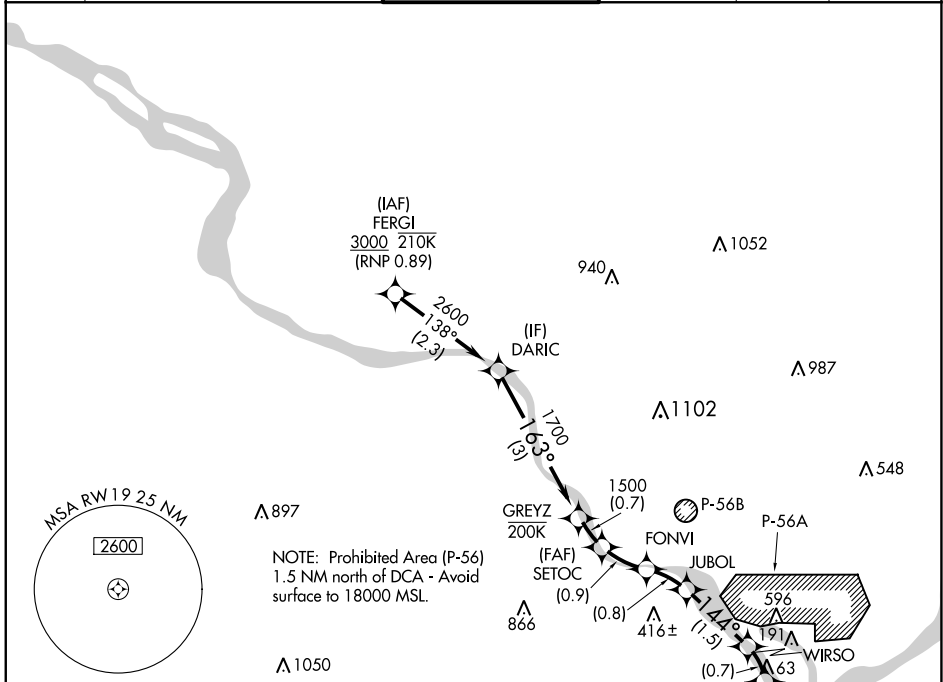
NE-3, 22 FEB 2024 to 21 MAR 2024

APP CRS	Rwy Idg	6869
187°	TDZE	13
	Apt Elev	14

RNAV (RNP) RWY 19

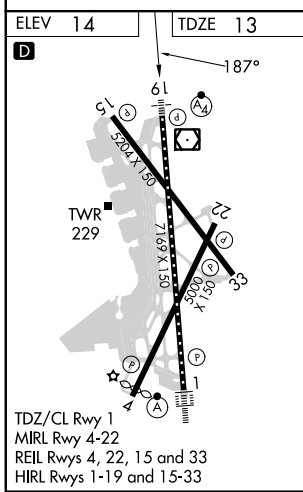
RONALD REAGAN WASHINGTON NTL (DCA)

D-ATIS 132.65	POTOMAC APP CON	WASHINGTON TOWER	GND CON	CLNC DEL	CPDLC
	119.85 239.25 (WEST/SOUTH) 124.2 360.8 (EAST)	119.1 257.6	121.7 257.6	128.25	



NE-3, 22 FEB 2024 to 21 MAR 2024

NE-3, 22 FEB 2024 to 21 MAR 2024



ELEV 14	TDZE 13	MISSED APCH FIX																														
<table border="1"> <tr> <td>DARIC</td> <td>GREYZ</td> <td>SETOC</td> <td>FONVI</td> <td>JUBOL</td> <td>WIRSO</td> <td>FIROP</td> <td>Final App tr to RWY19</td> <td>BADDN</td> </tr> <tr> <td>2600</td> <td>1700</td> <td>1500</td> <td>1214</td> <td>955</td> <td>480</td> <td>253</td> <td></td> <td></td> </tr> <tr> <td colspan="2">3 NM</td> <td>0.7 NM</td> <td>0.9 NM</td> <td>0.8 NM</td> <td>1.5 NM</td> <td>0.7</td> <td>0.6 NM</td> <td></td> </tr> </table>		DARIC	GREYZ	SETOC	FONVI	JUBOL	WIRSO	FIROP	Final App tr to RWY19	BADDN	2600	1700	1500	1214	955	480	253			3 NM		0.7 NM	0.9 NM	0.8 NM	1.5 NM	0.7	0.6 NM					
DARIC	GREYZ	SETOC	FONVI	JUBOL	WIRSO	FIROP	Final App tr to RWY19	BADDN																								
2600	1700	1500	1214	955	480	253																										
3 NM		0.7 NM	0.9 NM	0.8 NM	1.5 NM	0.7	0.6 NM																									
<table border="1"> <tr> <td>CATEGORY</td> <td>A</td> <td>B</td> <td>C</td> <td>D</td> </tr> <tr> <td>RNP 0.11 DA</td> <td></td> <td>491-1½</td> <td>478 (500-1½)</td> <td></td> </tr> <tr> <td>RNP 0.30 DA</td> <td></td> <td>550-1¾</td> <td>537 (600-1¾)</td> <td></td> </tr> </table>		CATEGORY	A	B	C	D	RNP 0.11 DA		491-1½	478 (500-1½)		RNP 0.30 DA		550-1¾	537 (600-1¾)		<h2>AUTHORIZATION REQUIRED</h2>															
CATEGORY	A	B	C	D																												
RNP 0.11 DA		491-1½	478 (500-1½)																													
RNP 0.30 DA		550-1¾	537 (600-1¾)																													