

# AKUNA NINE DEPARTURE (RNAV)

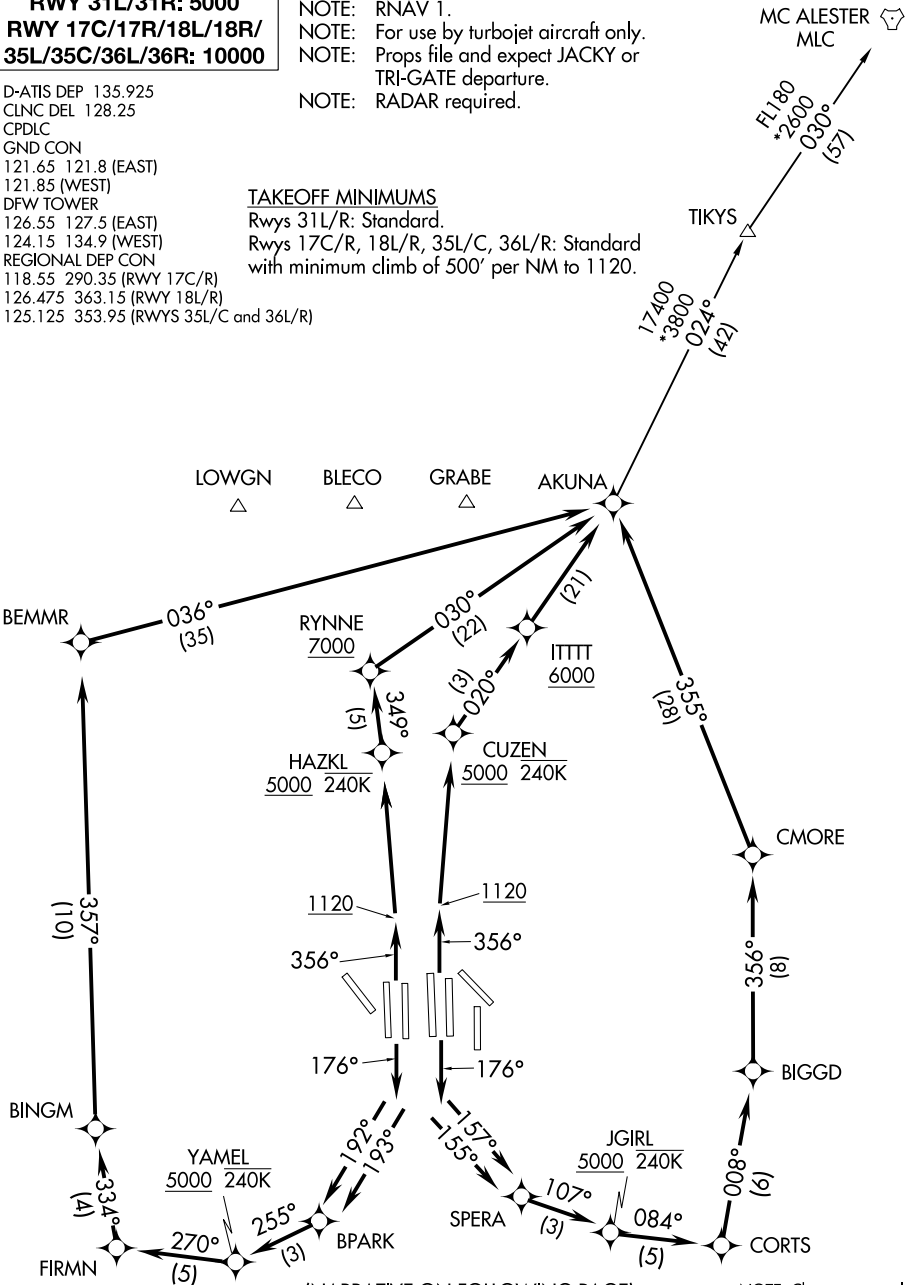
**TOP ALTITUDE:**  
**RWY 31L/31R: 5000**  
**RWY 17C/17R/18L/18R/**  
**35L/35C/36L/36R: 10000**

- NOTE: DME/DME/IRU or GPS required.
- NOTE: RNAV 1.
- NOTE: For use by turbojet aircraft only.
- NOTE: Props file and expect JACKY or TRI-GATE departure.
- NOTE: RADAR required.

D-ATIS DEP 135.925  
 CLNC DEL 128.25  
 CPDLC  
 GND CON  
 121.65 121.8 (EAST)  
 121.85 (WEST)  
 DFW TOWER  
 126.55 127.5 (EAST)  
 124.15 134.9 (WEST)  
 REGIONAL DEP CON  
 118.55 290.35 (RWY 17C/R)  
 126.475 363.15 (RWY 18L/R)  
 125.125 353.95 (RWYS 35L/C and 36L/R)

### TAKEOFF MINIMUMS

Rwys 31L/R: Standard.  
 Rwys 17C/R, 18L/R, 35L/C, 36L/R: Standard  
 with minimum climb of 500' per NM to 1120.



SC-2, 22 FEB 2024 to 21 MAR 2024

SC-2, 22 FEB 2024 to 21 MAR 2024

(NARRATIVE ON FOLLOWING PAGE)

NOTE: Chart not to scale.

# AKUNA NINE DEPARTURE (RNAV)



DEPARTURE ROUTE DESCRIPTION

TAKEOFF RUNWAY 17C: Climb on heading 176° to intercept course 157° to SPERA, then on track 107° to cross JGIRL at or above 5000 and at or below 240K, then on depicted route to AKUNA, thence. . . .

TAKEOFF RUNWAY 17R: Climb on heading 176° to intercept course 155° to SPERA, then on track 107° to cross JGIRL at or above 5000 and at or below 240K, then on depicted route to AKUNA, thence. . . .

TAKEOFF RUNWAY 18L: Climb on heading 176° to intercept course 193° to BPARK, then on track 255° to cross YAMEL at or above 5000 and at or below 240K, then on depicted route to AKUNA, thence. . . .

TAKEOFF RUNWAY 18R: Climb on heading 176° to intercept course 192° to BPARK, then on track 255° to cross YAMEL at or above 5000 and at or below 240K, then on depicted route to AKUNA, thence. . . .

TAKEOFF RUNWAYS 35L/C: Climb on heading 356° to 1120, then direct CUZEN, cross CUZEN at or above 5000 and at or below 240K, then on track 020° to cross ITTTT at or above 6000, then on depicted route to AKUNA, thence. . . .

TAKEOFF RUNWAYS 36L/R: Climb on heading 356° to 1120, then direct HAZKL, cross HAZKL at or above 5000 and at or below 240K, then on track 349° to cross RYNNE at or above 7000, then on depicted route to AKUNA, thence. . . .

. . . .on (transition) maintain 10000. Expect filed altitude 10 minutes after departure.

TAKEOFF RUNWAYS 31L/R: Climb on heading assigned by ATC, expect RADAR vectors to AKUNA, thence. . . .

. . . .on (transition) maintain 5000. Expect filed altitude 10 minutes after departure.

MC ALESTER TRANSITION (AKUNA9.MLC)

SC-2, 22 FEB 2024 to 21 MAR 2024

SC-2, 22 FEB 2024 to 21 MAR 2024

ALIAN TWO DEPARTURE (RNAV)  
(ALIAN2:ALIAN) 04FEB16

DALLAS-FORT WORTH, TEXAS  
DALLAS-FORT WORTH INTL (DFW)

**TOP ALTITUDE:**  
**RWY 17C/R, 18L/R,**  
**35C/L, 36L/R: 10000**  
**RWY 31L/R: 5000**

TAKEOFF MINIMUMS

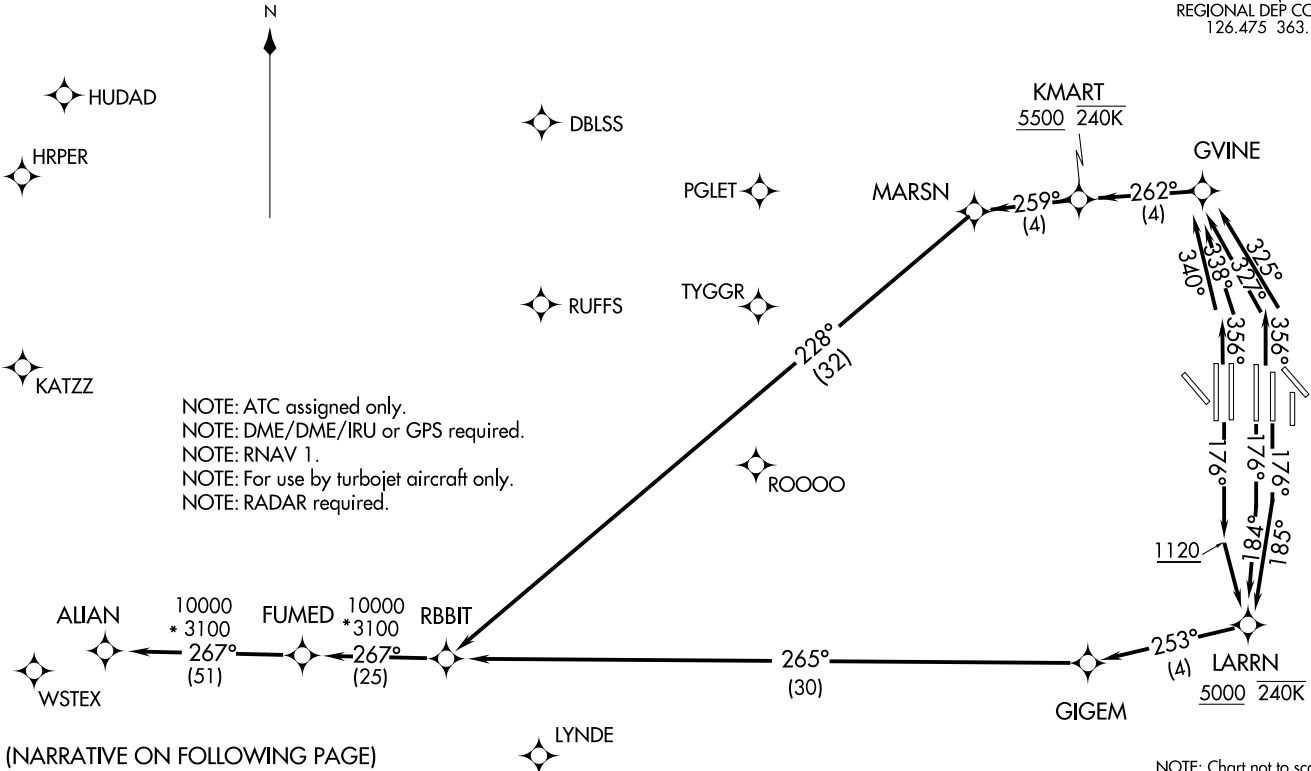
Rwys 31L/R: Standard.  
Rwys 17C/R, 18L/R, 35L/C, 36L/R:  
Standard with minimum climb of 500' per  
NM to 1120.

D-ATIS DEP 135.925  
CLNC DEL 128.25  
CPDLC  
GND CON  
121.65 121.8 (EAST)  
121.85 (WEST)  
DFW TOWER  
126.55 127.5 (EAST)  
124.15 134.9 (WEST)  
REGIONAL DEP CON  
126.475 363.15

(ALIAN2:ALIAN) 23334  
ALIAN TWO DEPARTURE (RNAV)

AL-6039 (FAA)

DALLAS-FORT WORTH INTL (DFW)  
DALLAS-FORT WORTH, TEXAS



(NARRATIVE ON FOLLOWING PAGE)

NOTE: Chart not to scale



DEPARTURE ROUTE DESCRIPTION

TAKEOFF RWY 17C: Climb heading 176° to intercept course 185° to cross LARRN at or above 5000, then on track 253° to GIGEM, then on track 265° to RBBIT, thence. . . .

TAKEOFF RWY 17R: Climb heading 176° to intercept course 184° to cross LARRN at or above 5000, then on track 253° to GIGEM, then on track 265° to RBBIT, thence. . . .

TAKEOFF RWY 18L/R: Climb heading 176° to 1120, then direct to cross LARRN at or above 5000, then on track 253° to GIGEM, then on track 265° to RBBIT, thence. . . .

TAKEOFF RWY 35C: Climb heading 356° to intercept course 325° to GVINE, then on track 262° to cross KMART at or above 5500, then on track 259° to MARSN, then on track 228° to RBBIT, thence. . . .

TAKEOFF RWY 35L: Climb heading 356° to intercept course 327° to GVINE, then on track 262° to cross KMART at or above 5500, then on track 259° to MARSN, then on track 228° to RBBIT, thence. . . .

TAKEOFF RWY 36L: Climb heading 356° to intercept course 340° to GVINE, then on track 262° to cross KMART at or above 5500, then on track 259° to MARSN, then on track 228° to RBBIT, thence. . . .

TAKEOFF RWY 36R: Climb heading 356° to intercept course 338° to GVINE, then on track 262° to cross KMART at or above 5500, then on track 259° to MARSN, then on track 228° to RBBIT, thence. . . .

. . . .on track 267° to FUMED, then on track 267° to ALIAN.  
Maintain 10000, expect filed altitude ten minutes after departure.

TAKEOFF RWY 31L/R: Climb heading assigned by ATC, expect radar vectors to RBBIT, thence. . . .

. . . .on track 267° to FUMED, then on track 267° to ALIAN.  
Maintain 5000, expect filed altitude ten minutes after departure.

SC-2, 22 FEB 2024 to 21 MAR 2024

SC-2, 22 FEB 2024 to 21 MAR 2024



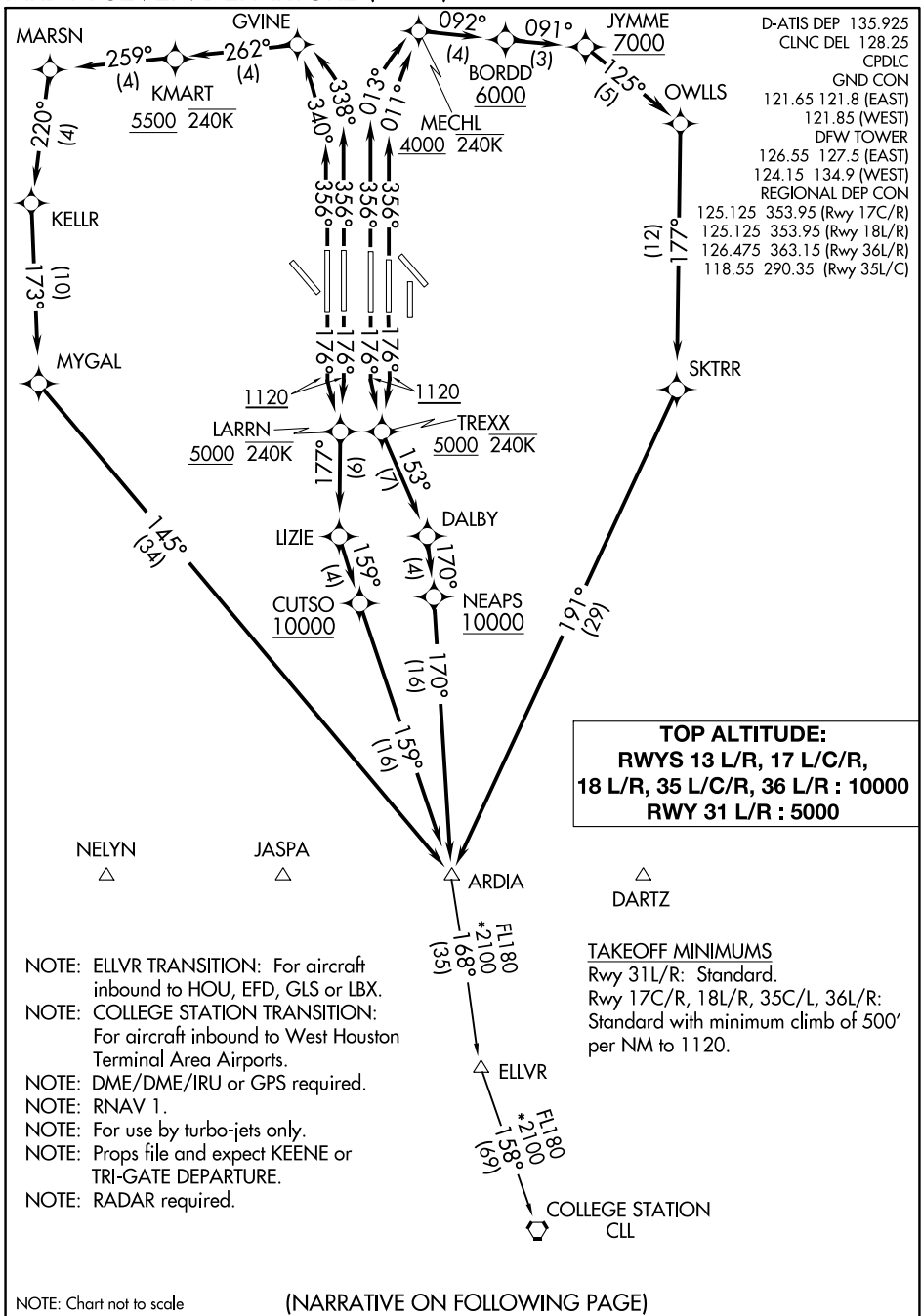
(ARDIA7.ARDIA) 23334

AL-6039 (FAA)

DALLAS-FORT WORTH INTL (DFW)

# ARDIA SEVEN DEPARTURE (RNAV)

DALLAS-FORT WORTH, TEXAS



SC-2, 22 FEB 2024 to 21 MAR 2024

SC-2, 22 FEB 2024 to 21 MAR 2024

(NARRATIVE ON FOLLOWING PAGE)

# ARDIA SEVEN DEPARTURE (RNAV)

(ARDIA7.ARDIA) 10OCT19

DALLAS-FORT WORTH, TEXAS

DALLAS-FORT WORTH INTL (DFW)



DEPARTURE ROUTE DESCRIPTION

TAKEOFF RUNWAYS 17C/R: Climb on heading 176° to 1120, then direct TREXX, cross TREXX at or above 5000 and at or below 240K, then on track 153° to DALBY, then on track 170° to cross NEAPS at or above 10000, then on depicted route to ARDIA, thence . . . .

TAKEOFF RUNWAYS 18L/R: Climb on heading 176° to 1120, then direct LARRN, cross LARRN at or above 5000 and at or below 240K, then on track 177° to LIZIE, then on track 159° to cross CUTSO at or above 10000, then on depicted route to ARDIA, thence . . . .

TAKEOFF RUNWAYS 31L/R: Climb on heading assigned by ATC, for RADAR vectors to ARDIA, maintain 5000, expect filed altitude ten minutes after departure.

TAKEOFF RUNWAY 35C: Climb on heading 356° to intercept course 011° to cross MECHL at or above 4000 and at or below 240K, then on track 092° to cross BORDD at or above 6000, then on track 091° to cross JYMME at or above 7000, then on depicted route to ARDIA, thence . . . .

TAKEOFF RUNWAY 35L: Climb on heading 356° to intercept course 013° to cross MECHL at or above 4000 and at or below 240K, then on track 092° to cross BORDD at or above 6000, then on track 091° to cross JYMME at or above 7000, then on depicted route to ARDIA, thence . . . .

TAKEOFF RUNWAY 36L: Climb on heading 356° to intercept course 340° to GVINE, then on course 262° to cross KMART at or above 5500 and at or below 240K, then on depicted route to ARDIA, thence . . . .

TAKEOFF RUNWAY 36R: Climb heading 356° to intercept course 338° to GVINE, then on course 262° to cross KMART at or above 5500 and at or below 240K, then on depicted route to ARDIA, thence . . . .

. . . . (transition) Maintain 10000, expect filed altitude ten minutes after departure.

COLLEGE STATION TRANSITION (ARDIA7.CLL):

ELLVR TRANSITION (ARDIA7.ELLVR):

SC-2, 22 FEB 2024 to 21 MAR 2024

SC-2, 22 FEB 2024 to 21 MAR 2024

(BLECO8.BLECO) 23334

AL-6039 (FAA)

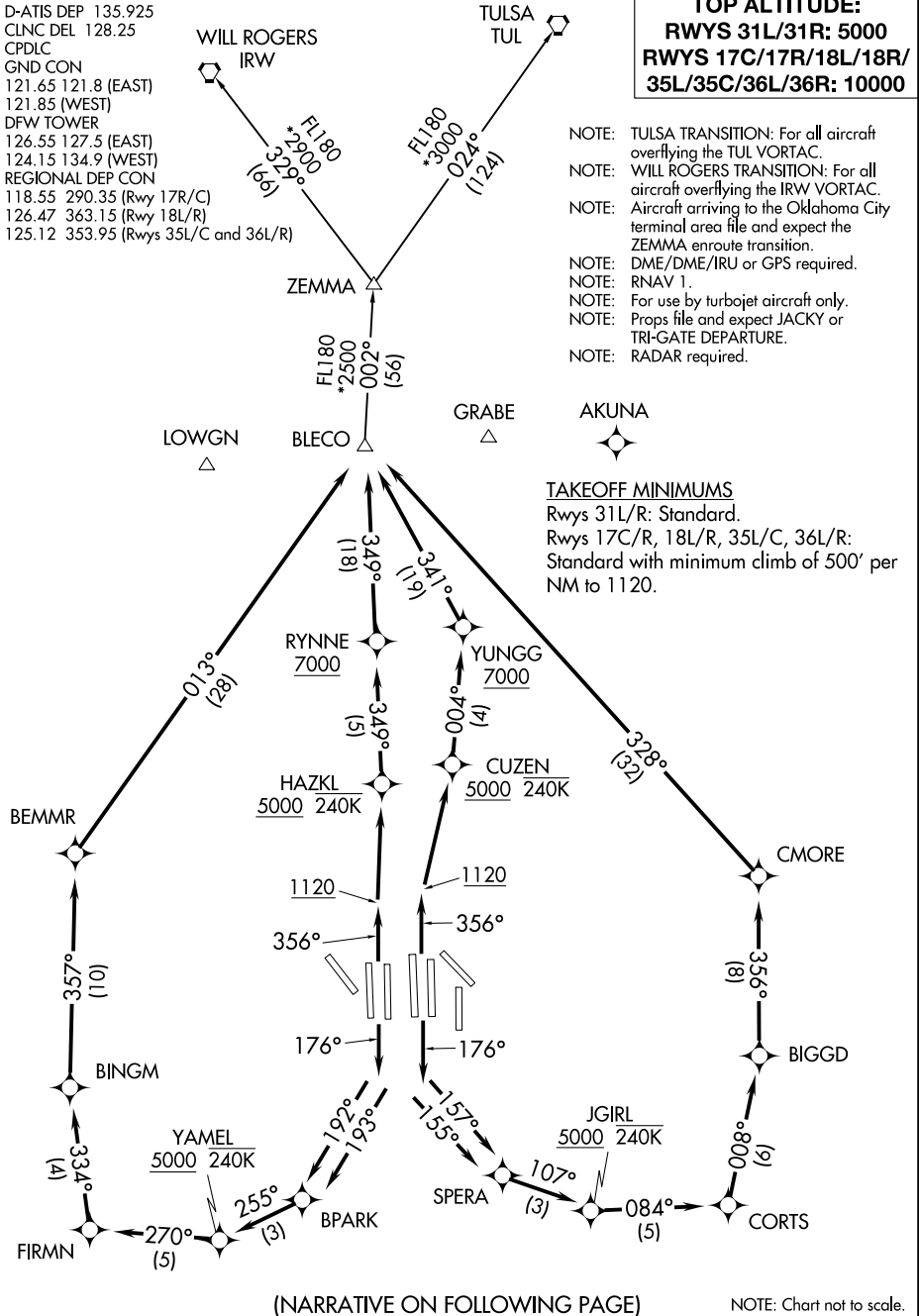
DALLAS-FORT WORTH INTL (DFW)  
DALLAS-FORT WORTH, TEXAS

# BLECO EIGHT DEPARTURE (RNAV)

D-ATIS DEP 135.925  
 CLNC DEL 128.25  
 CPDLC  
 GND CON  
 121.65 121.8 (EAST)  
 121.85 (WEST)  
 DFW TOWER  
 126.55 127.5 (EAST)  
 124.15 134.9 (WEST)  
 REGIONAL DEP CON  
 118.55 290.35 (Rwy 17R/C)  
 126.47 363.15 (Rwy 18L/R)  
 125.12 353.95 (Rwys 35L/C and 36L/R)

**TOP ALTITUDE:**  
**RWYS 31L/31R: 5000**  
**RWYS 17C/17R/18L/18R/  
 35L/35C/36L/36R: 10000**

- NOTE: TULSA TRANSITION: For all aircraft overflying the TUL VORTAC.
- NOTE: WILL ROGERS TRANSITION: For all aircraft overflying the IRW VORTAC.
- NOTE: Aircraft arriving to the Oklahoma City terminal area file and expect the ZEMMA enroute transition.
- NOTE: DME/DME/IRU or GPS required.
- NOTE: RNAV 1.
- NOTE: For use by turbojet aircraft only.
- NOTE: Props file and expect JACKY or TRI-GATE DEPARTURE.
- NOTE: RADAR required.



(NARRATIVE ON FOLLOWING PAGE)

SC-2, 22 FEB 2024 to 21 MAR 2024

SC-2, 22 FEB 2024 to 21 MAR 2024

# BLECO EIGHT DEPARTURE (RNAV)

(BLECO8.BLECO) 29MAR18

DALLAS-FORT WORTH, TEXAS  
DALLAS-FORT WORTH INTL (DFW)



DEPARTURE ROUTE DESCRIPTION

TAKEOFF RWY 17C: Climb heading 176° to intercept course 157° to SPERA, then on track 107° to cross JGIRL at or above 5000, then on depicted route to BLECO, thence. . . .

TAKEOFF RWY 17R: Climb heading 176° to intercept course 155° to SPERA, then on track 107° to cross JGIRL at or above 5000, then on depicted route to BLECO, thence. . . .

TAKEOFF RWY 18L: Climb heading 176° to intercept course 193° to BPARK, then on track 255° to cross YAMEL at or above 5000, then on depicted route to BLECO, thence. . . .

TAKEOFF RWY 18R: Climb heading 176° to intercept course 192° to BPARK, then on track 255° to cross YAMEL at or above 5000, then on depicted route to BLECO, thence. . . .

TAKEOFF RWYS 35L/C: Climb heading 356° to 1120, then direct CUZEN, cross CUZEN at or above 5000, then on track 004° to cross YUNGG at or above 7000, then on depicted route to BLECO, thence. . . .

TAKEOFF RWYS 36L/R: Climb heading 356° to 1120, then direct HAZKL, cross HAZKL at or above 5000, then on track 349° to cross RYNNE at or above 7000, then on depicted route to BLECO, thence. . . .

. . . .on (transition) maintain 10000. Expect filed altitude ten minutes after departure.

TAKEOFF RWYS 31L/R: Climb heading assigned by ATC, expect RADAR vectors to BLECO, thence. . . .

. . . .on (transition) maintain 5000. Expect filed altitude ten minutes after departure.

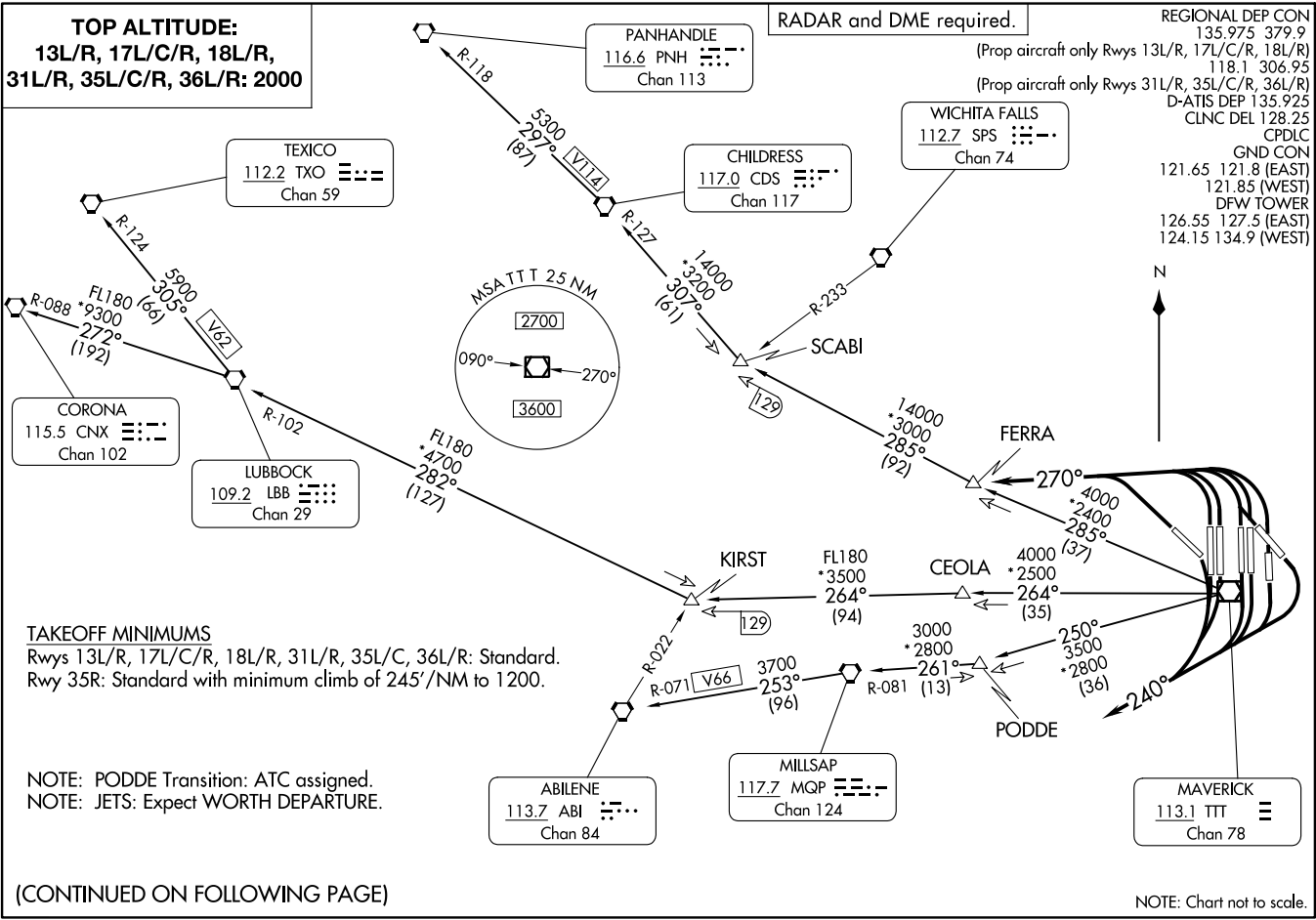
- TULSA TRANSITION (BLECO8.TUL)
- WILL ROGERS TRANSITION (BLECO8.IRW)
- ZEMMA TRANSITION (BLECO8.ZEMMA)

SC-2, 22 FEB 2024 to 21 MAR 2024

SC-2, 22 FEB 2024 to 21 MAR 2024

COYOTE FOUR DEPARTURE  
(CYOTE4.TTT) 25JAN24

DALLAS-FORT WORTH, TEXAS  
DALLAS-FORT WORTH INTL (DFW)



(CONTINUED ON FOLLOWING PAGE)

(CYOTE4.TTT) 24025

AL-6039 (FAA)

DALLAS-FORT WORTH INTL (DFW)  
DALLAS-FORT WORTH, TEXAS

# COYOTE FOUR DEPARTURE



## DEPARTURE ROUTE DESCRIPTION

TAKEOFF RUNWAYS 13L/R, 17L/C/R, 18L/R: Climb on heading 240° for RADAR vectors to appropriate route, thence. . . .

TAKEOFF RUNWAYS 31L/R, 35L/C/R, 36L/R: Climb on heading 270° for RADAR vectors to appropriate route, thence. . . .

. . . .maintain 2000 and expect filed altitude 10 minutes after departure.

ABILENE TRANSITION (CYOTE4.ABI): From over TTT VOR/DME on TTT R-250 to PODDE, then on MQP R-081 to MQP VORTAC, then on MQP R-253 and ABI R-071 to ABI VORTAC.

CHILDRESS TRANSITION (CYOTE4.CDS): From over TTT VOR/DME on TTT R-285 to SCABI, then on CDS R-127 to CDS VORTAC.

CORONA TRANSITION (CYOTE4.CNX): From over TTT VOR/DME on TTT R-264 to KIRST, then on LBB R-102 to LBB VORTAC, then on LBB R-272 and CNX R-088 to CNX VORTAC.

LUBBOCK TRANSITION (CYOTE4.LBB): From over TTT VOR/DME on TTT R-264 to KIRST, then on LBB R-102 to LBB VORTAC.

MILLSAP TRANSITION (CYOTE4.MQP): From over TTT VOR/DME on TTT R-250 to PODDE, then on MQP R-081 to MQP VORTAC.

PANHANDLE TRANSITION (CYOTE4.PNH): From over TTT VOR/DME on TTT R-285 to SCABI, then on CDS R-127 to CDS VORTAC, then on CDS R-297 and PNH R-118 to PNH VORTAC.

PODDE TRANSITION (CYOTE4.PODDE): From over TTT VOR/DME on TTT R-250 to PODDE.

TEXICO TRANSITION (CYOTE4.TXO): From over TTT VOR/DME on TTT R-264 to KIRST, then on LBB R-102 to LBB VORTAC, then on LBB R-305 and TXO R-124 to TXO VORTAC.

SC-2, 22 FEB 2024 to 21 MAR 2024

SC-2, 22 FEB 2024 to 21 MAR 2024

# COYOTE FOUR DEPARTURE

DALLAS THREE DEPARTURE  
(DAL3 TTT) 25JAN24

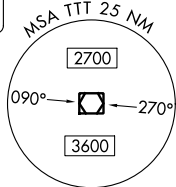
DALLAS-FORT WORTH INTL (DFW)  
DALLAS-FORT WORTH, TEXAS

REGIONAL DEP CON  
118.55 290.35  
D-ATIS DEP 135.925  
CLNC DEL 128.25  
CPDLC  
GND CON  
121.65 121.8 (EAST)  
121.85 (WEST)  
DFW TOWER  
126.55 127.5 (EAST)  
124.15 134.9 (WEST)

RADAR and DME required.

TAKEOFF MINIMUMS  
Rwys 13L/R, 17L/C/R, 18L/R,  
31L/R, 35L/C, 36L/R: Standard.  
Rwy 35R: Standard with minimum  
climb of 245' /NM to 1200.

LITTLE ROCK  
113.9 LIT  
Chan 86



TEXARKANA  
116.3 TXK  
Chan 110

TOP ALTITUDE:  
Rwys 13 L/R, 17 L/C/R, 18 L/R,  
35 L/C/R, 36 L/R: 10000  
Rwys 31 L/R: 5000

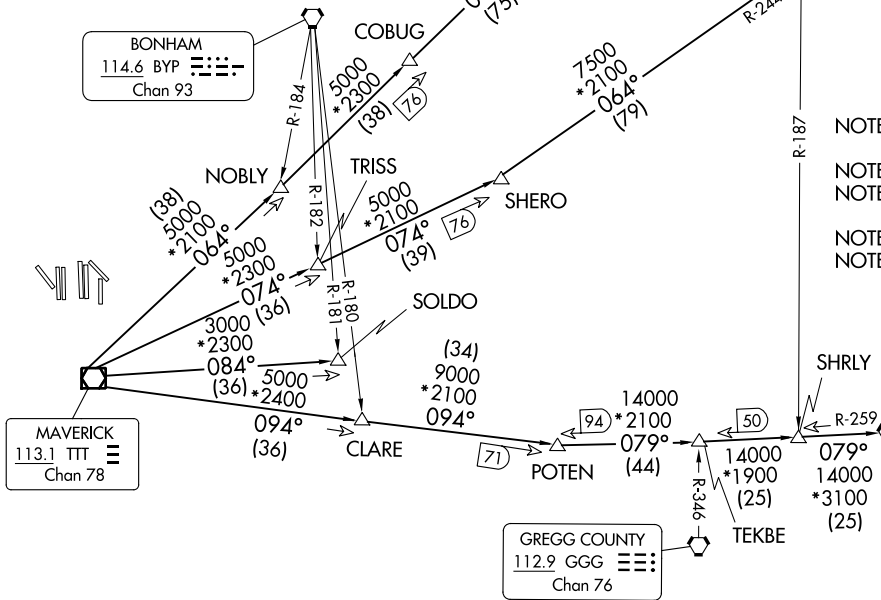
NOTE: BELCHER Transition: For aircraft inbound to the JAN, MLU, and SHV terminal areas only.  
NOTE: SOLD0 Transition: ATC assigned.  
NOTE: For all aircraft requesting FL230 and below expect GARLAND departure.  
NOTE: For all aircraft requesting FL240 and above.  
NOTE: Dallas-Fort Worth Intl Departures: Jets maintain 240K until leaving 5000.



DALLAS THREE DEPARTURE  
(DAL3 TTT) 24025

AL-6039 (FAA)

DALLAS-FORT WORTH INTL (DFW)  
DALLAS-FORT WORTH, TEXAS



(CONTINUED ON FOLLOWING PAGE)

NOTE: Chart not to scale.

# DALLAS THREE DEPARTURE



## DEPARTURE ROUTE DESCRIPTION

TAKEOFF RUNWAYS 31L/R: Climb on assigned heading, maintain 5000, thence. . . .

TAKEOFF RUNWAYS 13L/R, 17L/C/R, 18L/R, 35L/C/R, 36L/R: Climb on assigned heading, maintain 10000, thence. . . .

. . . .for RADAR vectors to appropriate route and expect filed altitude 10 minutes after departure.

BELCHER TRANSITION (DALL3.EIC): From over TTT VOR/DME on TTT R-094 to POTEN, then on EIC R-259 to EIC VORTAC.

LITTLE ROCK TRANSITION (DALL3.LIT): From over TTT VOR/DME on TTT R-064 to ORTRO, then on LIT R-235 to LIT VORTAC.

SOLDO TRANSITION (DALL3.SOLDO): From over TTT VOR/DME on TTT R-084 to SOLDO.

TEXARKANA TRANSITION (DALL3.TXK): From over TTT VOR/DME on TTT R-074 to SHERO, then on TXK R-244 to TXK VORTAC.

SC-2, 22 FEB 2024 to 21 MAR 2024

SC-2, 22 FEB 2024 to 21 MAR 2024



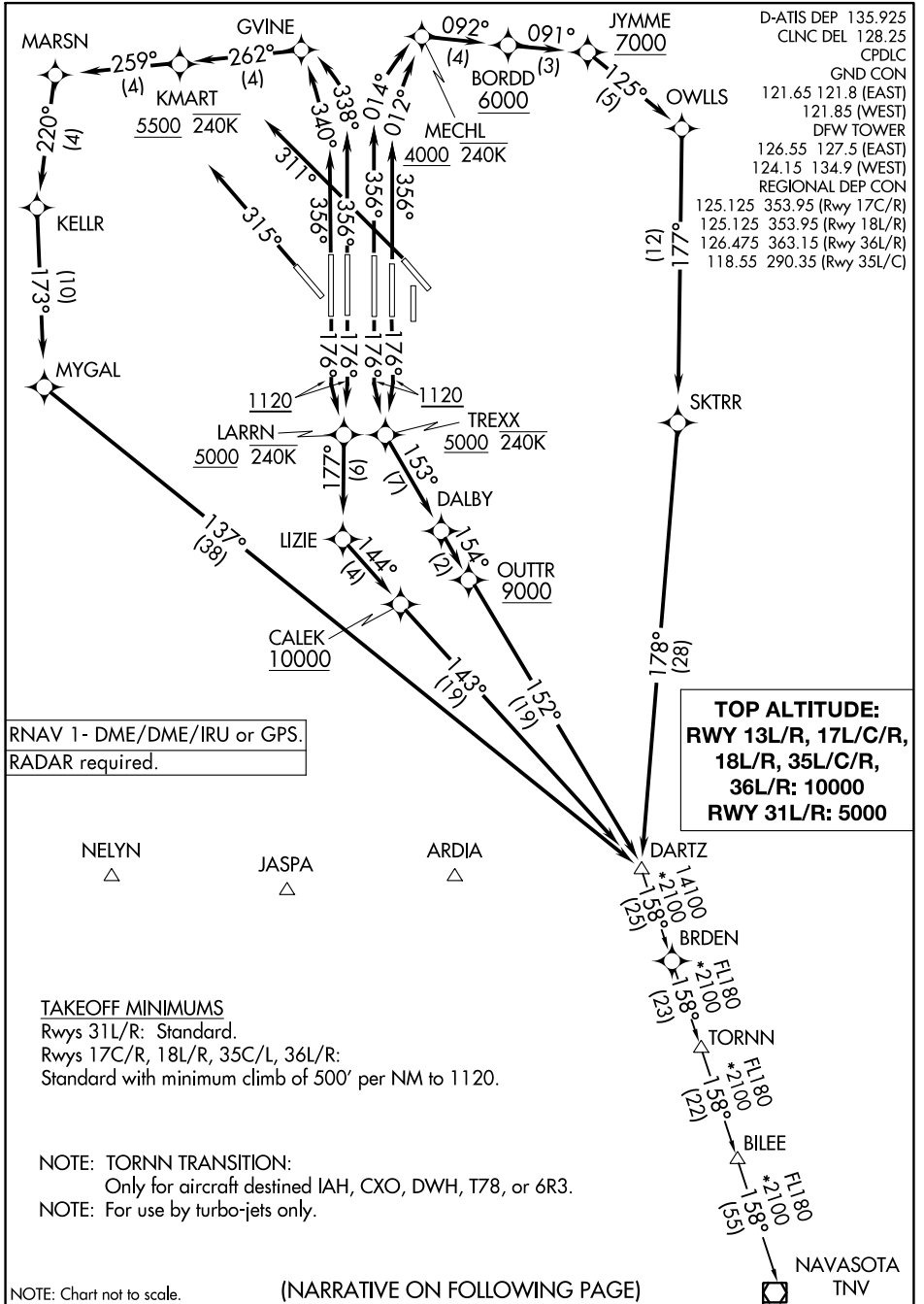
(DARTZ9.DARTZ) 23334

AL-6039 (FAA)

DALLAS-FORT WORTH INTL (DFW)

# DARTZ NINE DEPARTURE (RNAV)

DALLAS-FORT WORTH, TEXAS



SC-2, 22 FEB 2024 to 21 MAR 2024

SC-2, 22 FEB 2024 to 21 MAR 2024

# DARTZ NINE DEPARTURE (RNAV)

(DARTZ9.DARTZ) 03NOV22

DALLAS-FORT WORTH, TEXAS

DALLAS-FORT WORTH INTL (DFW)

# DARTZ NINE DEPARTURE (RNAV)



## DEPARTURE ROUTE DESCRIPTION

TAKEOFF RUNWAYS 17C/R: Climb on heading 176° to 1120, then direct TREXX, cross TREXX at or above 5000 and at or below 240K, then on track 153° to DALBY, then on track 154° to cross OUTTR at or above 9000, then on track 152° to DARTZ, thence. . .

TAKEOFF RUNWAYS 18L/R: Climb on heading 176° to 1120, then direct LARRN, cross LARRN at or above 5000 and at or below 240K, then on track 177° to LIZIE, then on track 144° to cross CALEK at or above 10000, then on track 143° to DARTZ, thence. . .

TAKEOFF RUNWAY 35C: Climb on heading 356° to intercept course 012° to cross MECHL at or above 4000 and at or below 240K, then on track 092° to cross BORDD at or above 6000, then on track 091° to cross JYMME at or above 7000, then on track 125° to OWLLS, then on track 177° to SKTRR, then track 178° to DARTZ, thence. . . .

TAKEOFF RUNWAY 35L: Climb on heading 356° to intercept course 014° to cross MECHL at or above 4000 and at or below 240K, then on track 092° to cross BORDD at or above 6000, then on track 091° to cross JYMME at or above 7000, then on track 125° to OWLLS, then on track 177° to SKTRR, then on track 178° to DARTZ, thence. . .

TAKEOFF RUNWAY 36L: Climb on heading 356° to intercept course 340° to GVINE, then on track 262° to cross KMART at or above 5500 and at or below 240K, then on track 259° to MARSN, then on track 220° to KELLR, then on track 173° to MYGAL, then on on track 137° to DARTZ, thence. . .

TAKEOFF RUNWAY 36R: Climb on heading 356° to intercept course 338° to GVINE, then on track 262° to cross KMART at or above 5500 and at or below 240K, then on track 259° to MARSN, then on track 220° to KELLR, then on track 173° to MYGAL, then on track 137° to DARTZ, thence. . .

TAKEOFF RUNWAY 31L: Climb on heading 315° or as assigned by ATC, for vectors to DARTZ, maintain 5000, expect filed altitude 10 minutes after departure.

TAKEOFF RUNWAY 31R: Climb on heading 311° or as assigned by ATC, for vectors to DARTZ, maintain 5000, expect filed altitude 10 minutes after departure.

. . . (transition) maintain 10000, expect filed altitude 10 minutes after departure.

NAVASOTA TRANSITION (DARTZ9.TNV):

TORNIN TRANSITION (DARTZ9.TORNN):

SC-2, 22 FEB 2024 to 21 MAR 2024

SC-2, 22 FEB 2024 to 21 MAR 2024

FORCK THREE DEPARTURE (RNAV)  
(FORCK3.FORCK) 08SEF22

DALLAS-FORT WORTH, TEXAS  
DALLAS-FORT WORTH INTL (DFW)

**TOP ALTITUDE:**  
**RWYS 31L/R: 5000**  
**RWYS 17C/R, 18L/R,**  
**35L/C, 36L/R: 10000**

RNAV 1 - DME/DME/IRU or GPS.  
RADAR required.

**TAKEOFF MINIMUMS**  
Rwys 31L/R: Standard.  
Rwys 17C/R, 18L/R, 35L/C, 36L/R:  
Standard with minimum climb of 500' per  
NM to 1120.

D-ATIS DEP 135.925  
CLNC DEL 128.25  
CPDLC  
GND CON  
121.65 121.8 (EAST)  
121.85 (WEST)  
DFW TOWER  
126.55 127.5 (EAST)  
124.15 134.9 (WEST)  
REGIONAL DEP CON  
118.55 290.35

ZACHH ✧

TRYTN ✧

SWDIA ✧

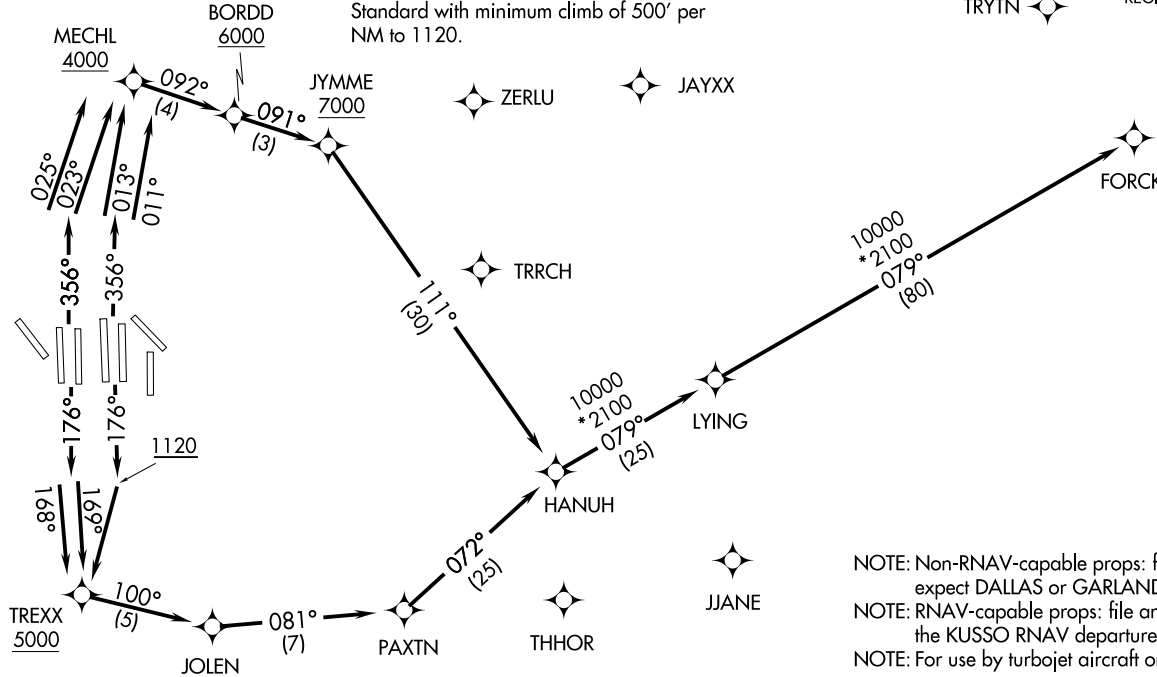
ZERLU ✧

JAYXX ✧



FORCK ✧

MRSSH ✧



NOTE: Non-RNAV-capable props: file and expect DALLAS or GARLAND departure.  
NOTE: RNAV-capable props: file and expect the KUSSO RNAV departure.  
NOTE: For use by turbojet aircraft only.

NOTE: Chart not to scale.

(NARRATIVE ON FOLLOWING PAGE)

(FORCK3.FORCK) 23334  
FORCK THREE DEPARTURE (RNAV)

AL-6039 (FAA)

DALLAS-FORT WORTH INTL (DFW)  
DALLAS-FORT WORTH, TEXAS



DEPARTURE ROUTE DESCRIPTION

TAKEOFF RUNWAYS 17C/R: Climb on heading 176° to 1120, then direct to cross TREXX at or above 5000, then on track 100° to JOLEN, then on track 081° to PAXTN, then on track 072° to HANUH, thence. . . .

TAKEOFF RUNWAY 18L: Climb on heading 176° to intercept course 169° to cross TREXX at or above 5000, then on track 100° to JOLEN, then on track 081° to PAXTN, then on track 072° to HANUH, thence. . . .

TAKEOFF RUNWAY 18R: Climb on heading 176° to intercept course 168° to cross TREXX at or above 5000, then on track 100° to JOLEN, then on track 081° to PAXTN, then on track 072° to HANUH, thence. . . .

TAKEOFF RUNWAY 35C: Climb on heading 356° to intercept course 011° to cross MECHL at or above 4000, then on track 092° to cross BORDD at or above 6000, then on track 091° to cross JYMME at or above 7000, then on track 111° to HANUH, thence. . . .

TAKEOFF RUNWAY 35L: Climb on heading 356° to intercept course 013° to cross MECHL at or above 4000, then on track 092° to cross BORDD at or above 6000, then on track 091° to cross JYMME at or above 7000, then on track 111° to HANUH, thence. . . .

TAKEOFF RUNWAY 36L: Climb on heading 356° to intercept course 025° to cross MECHL at or above 4000, then on track 092° to cross BORDD at or above 6000, then on track 091° to cross JYMME at or above 7000, then on track 111° to HANUH, thence. . . .

TAKEOFF RUNWAY 36R: Climb on heading 356° to intercept course 023° to cross MECHL at or above 4000, then on track 092° to cross BORDD at or above 6000, then on track 091° to cross JYMME at or above 7000, then on track 111° to HANUH, thence. . . .

. . . .on track 079° to LYING, then on track 079° to FORCK. Maintain 10000, expect filed altitude ten minutes after departure.

TAKEOFF RUNWAY 31L/R: Climb on heading assigned by ATC for RADAR vectors to HANUH, thence. . . .

. . . .on track 079° to LYING, then on track 079° to FORCK. Maintain 5000, expect filed altitude ten minutes after departure.

SC-2, 22 FEB 2024 to 21 MAR 2024

SC-2, 22 FEB 2024 to 21 MAR 2024

GARLAND FIVE DEPARTURE  
(GARLS.TT) 251AN24

DALLAS-FORT WORTH INTL (DFW)  
DALLAS-FORT WORTH, TEXAS

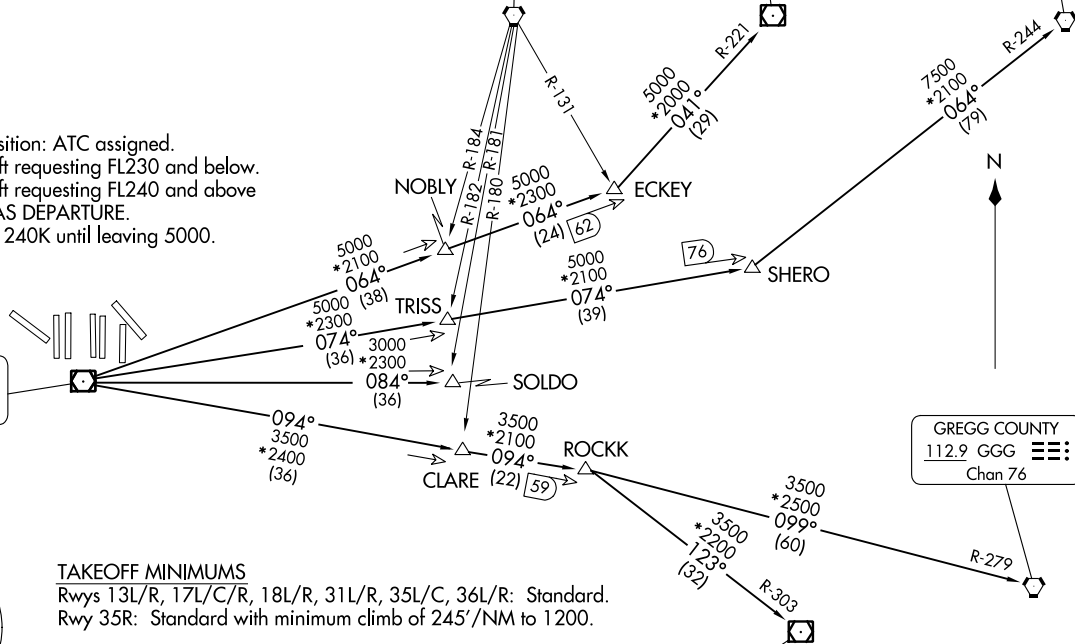
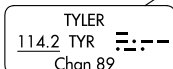
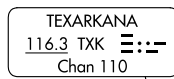
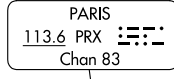
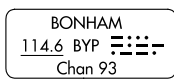
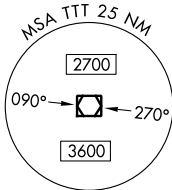
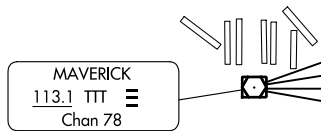
REGIONAL DEP CON  
118.55 290.35  
D-ATIS DEP  
135.925  
CLNC DEL  
128.25  
CPDLC  
GND CON  
121.65 121.8 (EAST)  
121.85 (WEST)  
DFW TOWER  
126.55 127.5 (EAST)  
124.15 134.9 (WEST)

**TOP ALTITUDE:**  
Rwys 13L/R, 17L/C/R, 18L/R,  
35L/C/R: 10000  
Rwys 31L/R: 5000

RADAR and DME required.

NOTE: SOLDO Transition: ATC assigned.  
NOTE: For all aircraft requesting FL230 and below.  
NOTE: For all aircraft requesting FL240 and above  
expect DALLAS DEPARTURE.  
NOTE: Jets maintain 240K until leaving 5000.

NOTE: Chart not to scale.



**TAKEOFF MINIMUMS**  
Rwys 13L/R, 17L/C/R, 18L/R, 31L/R, 35L/C, 36L/R: Standard.  
Rwy 35R: Standard with minimum climb of 245'/NM to 1200.

(GARLS.TT) 24025  
GARLAND FIVE DEPARTURE

AL-6039 (FAA)

DALLAS-FORT WORTH INTL (DFW)  
DALLAS-FORT WORTH, TEXAS

(CONTINUED ON FOLLOWING PAGE)

# GARLAND FIVE DEPARTURE



## DEPARTURE ROUTE DESCRIPTION

TAKEOFF RUNWAYS 31L/R: Climb on assigned heading, maintain 5000, thence. . .

TAKEOFF RUNWAYS 13L/R, 17L/C/R, 18L/R, 35L/C/R, 36L/R: Climb on assigned heading, maintain 10000, thence. . .

. . .for RADAR vectors to appropriate route and expect filed altitude 10 minutes after departure.

GREGG COUNTY TRANSITION (GARL5.GGG): From over TTT VOR/DME on TTT R-094 to ROCKK, then on GGG R-279 to GGG VORTAC.

PARIS TRANSITION (GARL5.PRX): From over TTT VOR/DME on TTT R-064 to ECKEY, then on PRX R-221 to PRX VOR/DME.

SOLDO TRANSITION (GARL5.SOLDO): From over TTT VOR/DME on TTT R-084 to SOLDO.

TEXARKANA TRANSITION (GARL5.TXK): From over TTT VOR/DME on TTT R-074 to SHERO, then on TXK R-244 to TXK VORTAC.

TYLER TRANSITION (GARL5.TYR): From over TTT VOR/DME on TTT R-094 to ROCKK, then on TYR R-303 to TYR VOR/DME.

SC-2, 22 FEB 2024 to 21 MAR 2024

SC-2, 22 FEB 2024 to 21 MAR 2024

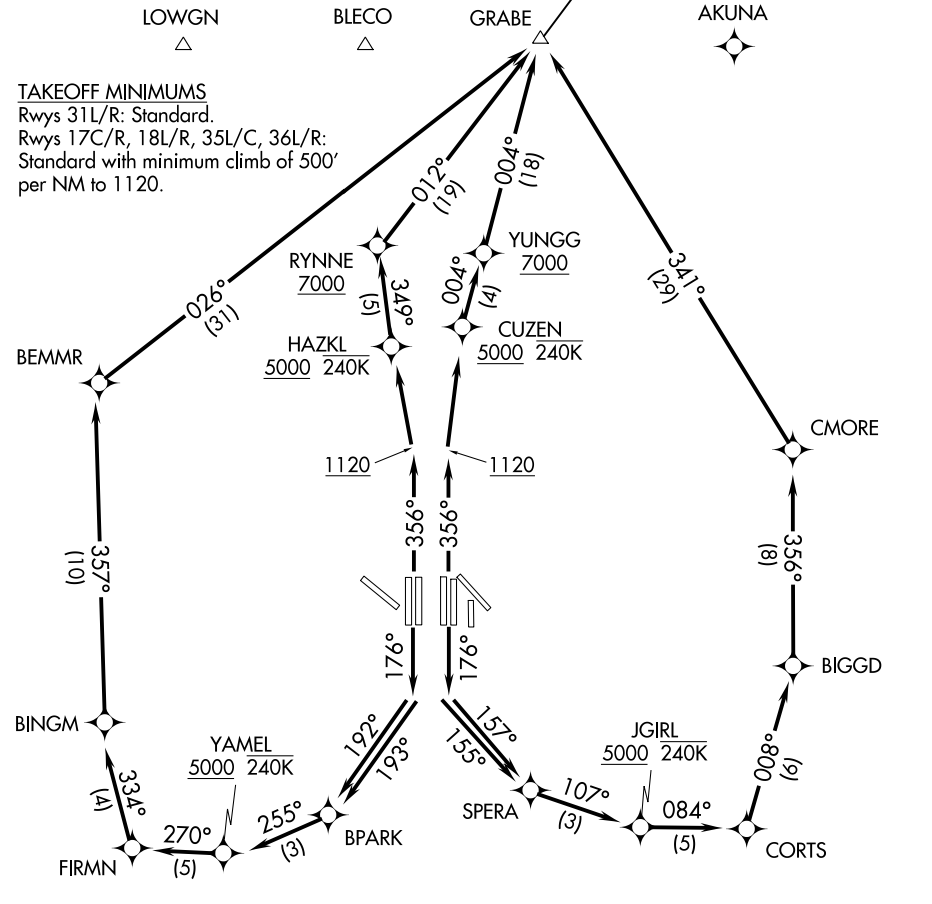
# GRABE EIGHT DEPARTURE (RNAV)

D-ATIS DEP 135.925  
 CLNC DEL 128.25  
 CPDLC  
 GND CON  
 121.65 121.8 (EAST)  
 121.85 (WEST)  
 DFW TOWER  
 126.55 127.5 (EAST)  
 124.15 134.9 (WEST)  
 REGIONAL DEP CON  
 118.55 290.35 (Rwy 17R/C)  
 126.47 363.15 (Rwy 18L/R)  
 125.12 353.95 (Rwys 35L/C and 36L/R)

NOTE: EAKER TRANSITION: For aircraft inbound to the Tulsa terminal area.  
 NOTE: OKMULGEE TRANSITION: For all aircraft overflying the OKM VOR/DME proceeding via J181 to BDF VORTAC then to destinations in the Chicago terminal area and north.  
 NOTE: DME/DME/IRU or GPS required.  
 NOTE: RNAV 1.  
 NOTE: For use by turbojet aircraft only.  
 NOTE: Props file and expect JACKY or TRI-GATE DEPARTURE.  
 NOTE: RADAR required.

OKMULGEE  
OKM

**TOP ALTITUDE:**  
**RWYS 31L/31R: 5000**  
**RWYS 17C/17R/18L/18R/  
 35L/35C/36L/36R: 10000**



TAKEOFF MINIMUMS  
 Rwys 31L/R: Standard.  
 Rwys 17C/R, 18L/R, 35L/C, 36L/R:  
 Standard with minimum climb of 500'  
 per NM to 1120.

(NARRATIVE ON FOLLOWING PAGE)

NOTE: Chart not to scale.

# GRABE EIGHT DEPARTURE (RNAV)

# GRABE EIGHT DEPARTURE (RNAV)



## DEPARTURE ROUTE DESCRIPTION

TAKEOFF RWY 17C: Climb heading 176° to intercept course 157° to SPERA, then on track 107° to cross JGIRL at or above 5000, then on depicted route to GRABE, thence. . . .

TAKEOFF RWY 17R: Climb heading 176° to intercept course 155° to SPERA, then on track 107° to cross JGIRL at or above 5000, then on depicted route to GRABE, thence. . . .

TAKEOFF RWY 18L: Climb heading 176° to intercept course 193° to BPARK, then on track 255° to cross YAMEL at or above 5000, then on depicted route to GRABE, thence. . . .

TAKEOFF RWY 18R: Climb heading 176° to intercept course 192° to BPARK, then on track 255° to cross YAMEL at or above 5000, then on depicted route to GRABE, thence. . . .

TAKEOFF RWYS 35L/C: Climb heading 356° to 1120, then direct CUZEN, cross CUZEN at or above 5000, then on track 004° to cross YUNGG at or above 7000, then on depicted route to GRABE, thence. . . .

TAKEOFF RWYS 36L/R: Climb heading 356° to 1120, then direct HAZKL, cross HAZKL at or above 5000, then on track 349° to cross RYNNE at or above 7000, then on depicted route to GRABE, thence. . . .

. . . .on (transition) maintain 10000. Expect filed altitude ten minutes after departure.

TAKEOFF RWYS 31L/R: Climb heading assigned by ATC, expect RADAR vectors to GRABE, thence. . . .

. . . .on (transition) maintain 5000. Expect filed altitude ten minutes after departure.

EAKER TRANSITION (GRABE8.EAKER)

OKMULGEE TRANSITION (GRABE8.OKM)

SC-2, 22 FEB 2024 to 21 MAR 2024

SC-2, 22 FEB 2024 to 21 MAR 2024



HRPER THREE DEPARTURE (RNAV)  
(HRPER3, HRPER) 04FEB16

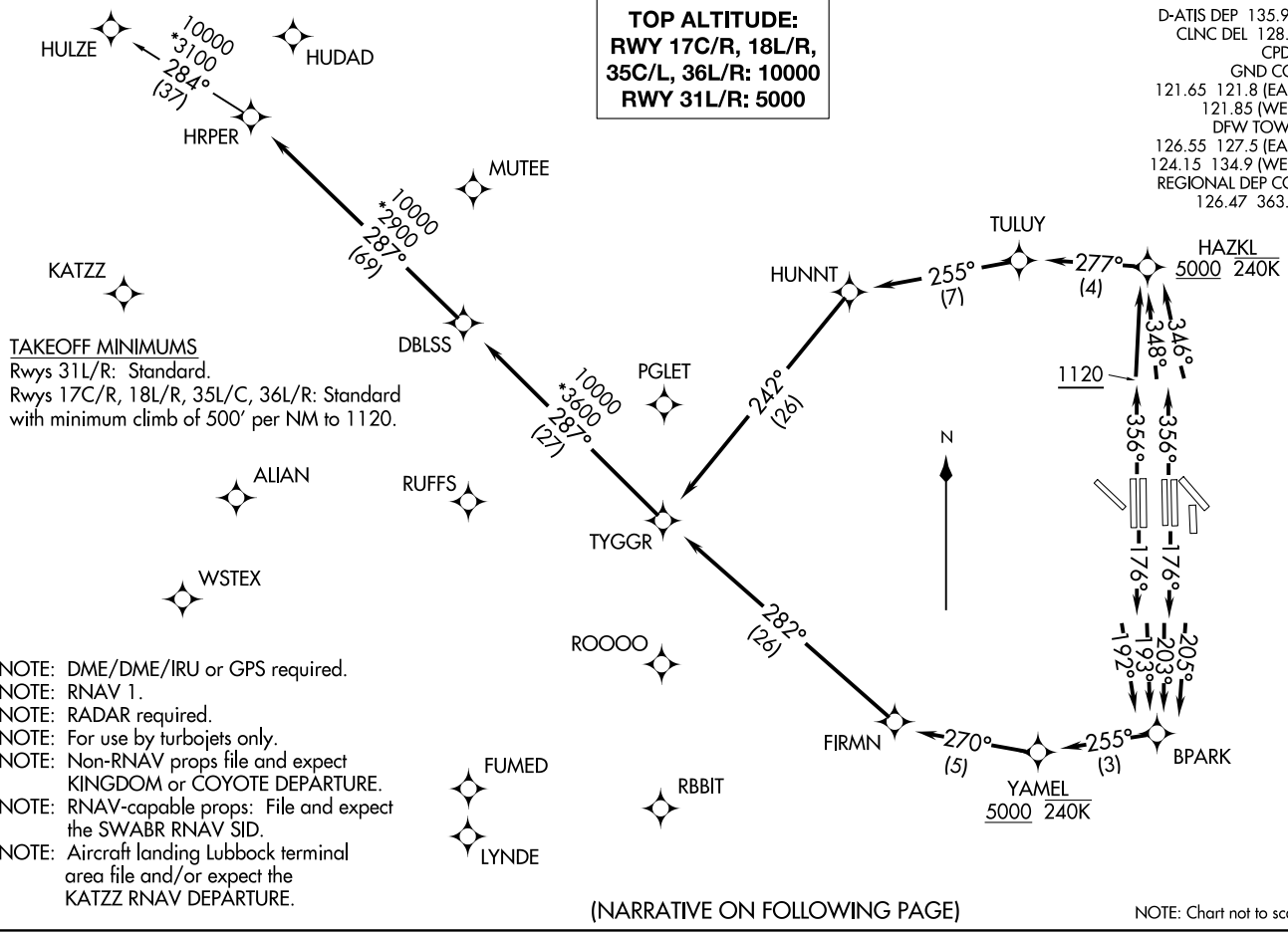
DALLAS-FORT WORTH, TEXAS  
DALLAS-FORT WORTH INTL (DFW)

(HRPER3, HRPER) 23334  
HRPER THREE DEPARTURE (RNAV)

AL-6039 (FAA)  
DALLAS-FORT WORTH INTL (DFW)  
DALLAS-FORT WORTH, TEXAS

**TOP ALTITUDE:**  
**RWY 17C/R, 18L/R,**  
**35C/L, 36L/R: 10000**  
**RWY 31L/R: 5000**

D-ATIS DEP 135.925  
CLNC DEL 128.25  
CPDLC  
GND CON  
121.65 121.8 (EAST)  
121.85 (WEST)  
DFW TOWER  
126.55 127.5 (EAST)  
124.15 134.9 (WEST)  
REGIONAL DEP CON  
126.47 363.15



**TAKEOFF MINIMUMS**  
Rwys 31L/R: Standard.  
Rwys 17C/R, 18L/R, 35L/C, 36L/R: Standard  
with minimum climb of 500' per NM to 1120.

- NOTE: DME/DME/IRU or GPS required.
- NOTE: RNAV 1.
- NOTE: RADAR required.
- NOTE: For use by turbojets only.
- NOTE: Non-RNAV props file and expect KINGDOM or COYOTE DEPARTURE.
- NOTE: RNAV-capable props: File and expect the SWABR RNAV SID.
- NOTE: Aircraft landing Lubbock terminal area file and/or expect the KATZZ RNAV DEPARTURE.

(NARRATIVE ON FOLLOWING PAGE)

NOTE: Chart not to scale.



DEPARTURE ROUTE DESCRIPTION

TAKEOFF RUNWAY 17C: Climb heading 176° to intercept course 205° to BPARK, then on track 255° to cross YAMEL at or above 5000, then on track 270° to FIRMN, then on track 282° to TYGGR, thence . . . .

TAKEOFF RUNWAY 17R: Climb heading 176° to intercept course 203° to BPARK, then on track 255° to cross YAMEL at or above 5000, then on track 270° to FIRMN, then on track 282° to TYGGR, thence . . . .

TAKEOFF RUNWAY 18L: Climb heading 176° to intercept course 193° to BPARK, then on track 255° to cross YAMEL at or above 5000, then on track 270° to FIRMN, then on track 282° to TYGGR, thence . . . .

TAKEOFF RUNWAY 18R: Climb heading 176° to intercept course 192° to BPARK, then on track 255° to cross YAMEL at or above 5000, then on track 270° to FIRMN, then on track 282° to TYGGR, thence . . . .

TAKEOFF RUNWAY 35C: Climb heading 356° to intercept course 346° to cross HAZKL at or above 5000, then on track 277° to TULUY, then on track 255° to HUNNT, then on track 242° to TYGGR, thence . . . .

TAKEOFF RUNWAY 35L: Climb heading 356° to intercept course 348° to cross HAZKL at or above 5000, then on track 277° to TULUY, then on track 255° to HUNNT, then on track 242° to TYGGR, thence . . . .

TAKEOFF RUNWAYS 36L/R: Climb heading 356° to 1120, then direct to cross HAZKL at or above 5000, then on track 277° to TULUY, then on track 255° to HUNNT, then on track 242° to TYGGR, thence . . . .

. . . . on track 287° to DBLSS, then on track 287° to HRPER, then on (transition).  
Maintain 10000, expect filed altitude ten minutes after departure.

TAKEOFF RUNWAYS 31L/R: Climb heading assigned by ATC, expect RADAR vectors to TYGGR, thence . . . .

. . . . on track 287° to DBLSS, then on track 287° to HRPER, then on (transition).  
Maintain 5000, expect filed altitude ten minutes after departure.

HULZE TRANSITION (HRPER3.HULZE)

SC-2, 22 FEB 2024 to 21 MAR 2024

SC-2, 22 FEB 2024 to 21 MAR 2024

HUDAD TWO DEPARTURE (RNAV)  
(HUDAD2, HUDAD) 04FEB16

DALLAS-FORT WORTH INTL (DFW)  
DALLAS-FORT WORTH, TEXAS

D-ATIS DEP 135.925  
CLNC DEL 128.25  
CPDLC  
GND CON  
121.65 121.8 (EAST)  
121.85 (WEST)  
DFW TOWER  
126.55 127.5 (EAST)  
124.15 134.9 (WEST)  
REGIONAL DEP CON  
126.47 363.15

**TOP ALTITUDE:**  
**RWY 17C/R, 18L/R,**  
**35C/L, 36L/R: 10000**  
**RWY 31L/R: 5000**

**TAKEOFF MINIMUMS**

Rwys 31L/R: Standard.  
Rwys 17C/R, 18L/R, 35C/L, 36L/R: Standard  
with minimum climb of 500' per NM to 1120.

HUDAD

HRPER

KATZZ

ALIAN

WSTEX

FUMED

LYNDE

DBLSS

RUFFS

TYGGR

ROOOO

RBBIT

MUTEE

PGLET

TULUY

HAZKL  
5000 240K

FIRMN

YAMEL  
5000 240K

BPARK

10000  
\*3000  
290°  
(69)

10000  
\*3600  
290°  
(27)

255°  
(311)

277°  
(4)

294°  
(28)

270°  
(5)

255°  
(3)

346°  
348°

1120

356°  
356°

176°  
176°

192°  
193°  
203°  
205°



- NOTE: DME/DME/IRU or GPS required.
- NOTE: RNAV 1.
- NOTE: For use by turbojet aircraft only.
- NOTE: RNAV-Capable props: File and expect SWABR RNAV SID.
- NOTE: Non-RNAV-Capable props: File and expect KINGDOM or COYOTE DEPARTURE.
- NOTE: RADAR required.

(NARRATIVE ON FOLLOWING PAGE)

NOTE: Chart not to scale

(HUDAD2, HUDAD) 23334  
HUDAD TWO DEPARTURE (RNAV)

AL-6039 (FAA)

DALLAS-FORT WORTH INTL (DFW)  
DALLAS-FORT WORTH, TEXAS



DEPARTURE ROUTE DESCRIPTION

TAKEOFF RUNWAY 17C: Climb heading 176° to intercept course 205° to BPARK, then on track 255° to cross YAMEL at or above 5000, then on track 270° to FIRMN, then on track 294° to PGLET, thence. . . .

TAKEOFF RUNWAY 17R: Climb heading 176° to intercept course 203° to BPARK, then on track 255° to cross YAMEL at or above 5000, then on track 270° to FIRMN, then on track 294° to PGLET, thence. . . .

TAKEOFF RUNWAY 18L: Climb heading 176° to intercept course 193° to BPARK, then on track 255° to cross YAMEL at or above 5000, then on track 270° to FIRMN, then on track 294° to PGLET, thence. . . .

TAKEOFF RUNWAY 18R: Climb heading 176° to intercept course 192° to BPARK, then on track 255° to cross YAMEL at or above 5000, then on track 270° to FIRMN, then on track 294° to PGLET, thence. . . .

TAKEOFF RUNWAY 35C: Climb heading 356° to intercept course 346° to cross HAZKL at or above 5000, then on track 277° to TULUY, then on track 255° to PGLET, thence. . . .

TAKEOFF RUNWAY 35L: Climb heading 356° to intercept course 348° to cross HAZKL at or above 5000, then on track 277° to TULUY, then on track 255° to PGLET, thence. . . .

TAKEOFF RUNWAYS 36L/R: Climb heading 356° to 1120, then direct to cross HAZKL at or above 5000, then on track 277° to TULUY, then on track 255° to PGLET, thence. . . .

. . . .on track 290° to MUTEE, then on track 290° to HUDDAD. Maintain 10000, expect filed altitude ten minutes after departure.

TAKEOFF RUNWAYS 31L/R: Climb heading assigned by ATC, expect RADAR vectors to PGLET, thence. . . .

. . . .on track 290° to MUTEE, then on track 290° to HUDDAD. Maintain 5000, expect filed altitude ten minutes after departure.

SC-2, 22 FEB 2024 to 21 MAR 2024

SC-2, 22 FEB 2024 to 21 MAR 2024

# JACKY ONE DEPARTURE

DALLAS-FORT WORTH, TEXAS

**TOP ALTITUDE:  
2000**

RNAV 1 - GPS. From BLECO, DECKK,  
NOOGY, ROLLS, ZEMMA.

RADAR required.

REGIONAL DEP CON

118.1 306.95

(Rwys 31L/R, 35L/C/R, 36 L/R)

135.975 379.9

(Rwys 13L/R, 17L/C/R, 18L/R)

D-ATIS DEP

135.925

CLNC DEL

128.25

CPDLC

GND CON

121.65 121.8 (EAST)

121.85 (WEST)

DFW TOWER

126.55 127.5 (EAST)

124.15 134.9 (WEST)

△ ROLLS

TULSA  
114.4 TUL  
Chan 91

### TAKEOFF MINIMUMS

Rwys 13L/R, 17L/C/R, 18L/R, 31L/R, 35L/C, 36L/R: Standard.

Rwy 35R: Standard with minimum climb of 245'/NM to 1200.

WILL ROGERS  
114.1 IRW  
Chan 88

DECKK  
△

NOOGY

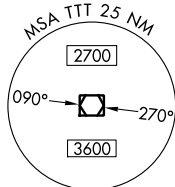
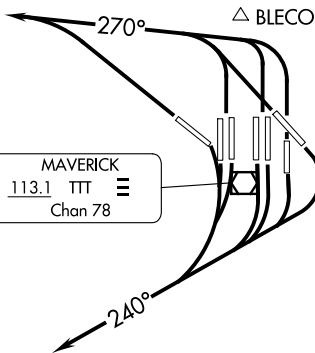
△

ZEMMA

ARDMORE  
116.7 ADM  
Chan 114

NOTE: Applicable in RADAR environment and for non-turbojet aircraft.

NOTE: BLECO Transition: ATC assigned.



NOTE: Chart not to scale.



### DEPARTURE ROUTE DESCRIPTION

#### NON-TURBOJET AIRCRAFT ONLY

TAKEOFF RUNWAYS 13L/R, 17L/C/R, 18L/R: Climb on heading 240° for RADAR vectors to appropriate route, thence....

TAKEOFF RUNWAYS 31L/R, 35L/C/R, 36L/R: Climb on heading 270° for RADAR vectors to appropriate route, thence....

....maintain 2000 and expect filed altitude 10 minutes after departure.

# JACKY ONE DEPARTURE

(JASPA7.JASPA) 23334

AL-6039 (FAA)

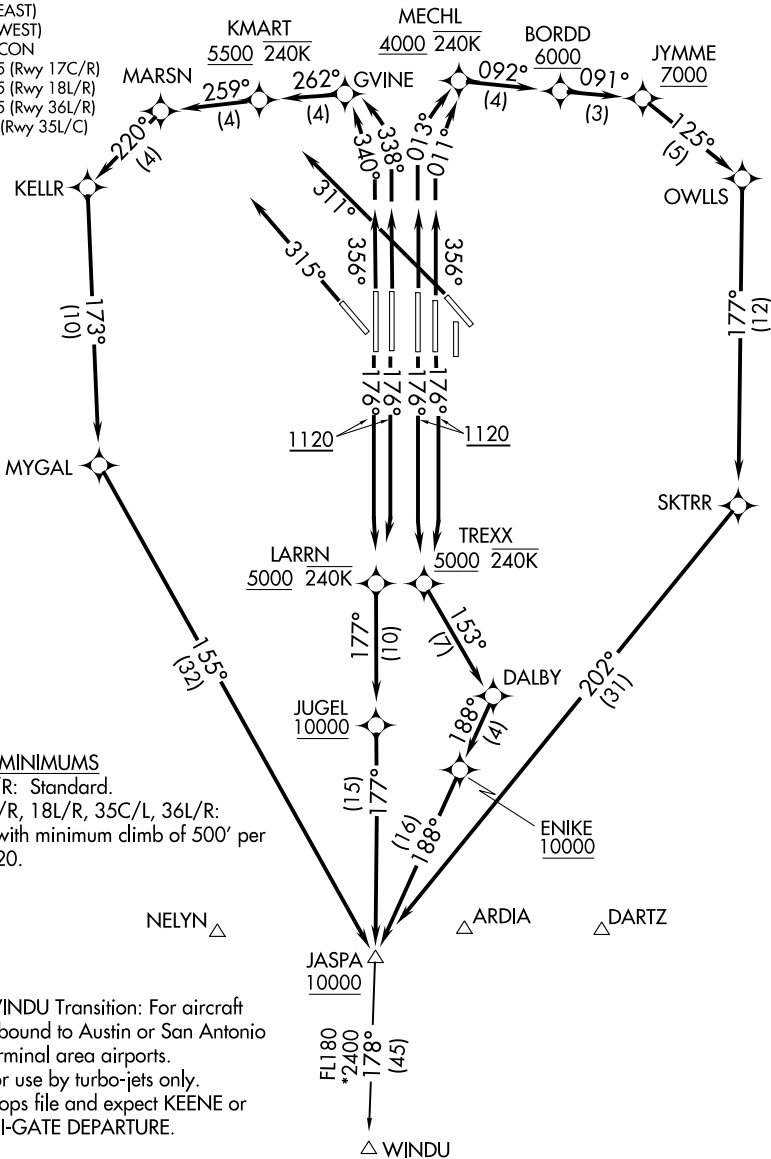
DALLAS-FORT WORTH INTL (DFW)  
DALLAS-FORT WORTH, TEXAS

# JASPA SEVEN DEPARTURE (RNAV)

D-ATIS DEP 135.925  
 CLNC DEL 128.25  
 CPDLC  
 GND CON  
 121.65 121.8 (EAST)  
 121.85 (WEST)  
 DFW TOWER  
 126.55 127.5 (EAST)  
 124.15 134.9 (WEST)  
 REGIONAL DEP CON  
 125.125 353.95 (Rwy 17C/R)  
 125.125 353.95 (Rwy 18L/R)  
 126.475 363.15 (Rwy 36L/R)  
 118.55 290.35 (Rwy 35L/C)

RNAV 1- DME/DME/IRU or GPS.  
 RADAR required.

**TOP ALTITUDE:**  
**RWY 13L/R, 17L/C/R,**  
**18L/R, 35L/C/R, 36L/R: 10000**  
**RWY 31L/R: 5000**



**TAKEOFF MINIMUMS**  
 Rws 31L/R: Standard.  
 Rws 17C/R, 18L/R, 35C/L, 36L/R:  
 Standard with minimum climb of 500' per  
 NM to 1120.

NOTE: WINDU Transition: For aircraft  
 inbound to Austin or San Antonio  
 terminal area airports.  
 NOTE: For use by turbo-jets only.  
 NOTE: Props file and expect KEENE or  
 TRI-GATE DEPARTURE.

(NARRATIVE ON FOLLOWING PAGE)

NOTE: Chart not to scale.

# JASPA SEVEN DEPARTURE (RNAV)

(JASPA7.JASPA) 03NOV22

DALLAS-FORT WORTH, TEXAS  
DALLAS-FORT WORTH INTL (DFW)

SC-2, 22 FEB 2024 to 21 MAR 2024

SC-2, 22 FEB 2024 to 21 MAR 2024



DEPARTURE ROUTE DESCRIPTION

TAKEOFF RUNWAYS 17C/R: Climb on heading 176° to 1120, then direct TREXX, cross TREXX at or above 5000 and at or below 240K, then on track 153° to DALBY, then on track 188° to cross ENIKE at or above 10000, then on track 188° to cross JASPA at or above 10000, thence. . . .

TAKEOFF RUNWAYS 18L/R: Climb on heading 176° to 1120, then direct LARRN, cross LARRN at or above 5000 and at or below 240K, then on track 177° to cross JUGEL at or above 10000, then on track 177° to cross JASPA at or above 10000, thence. . . .

TAKEOFF RUNWAY 35C: Climb on heading 356° to intercept course 011° to cross MECHL at or above 4000 and at or below 240K, then on track 092° to cross BORDD at or above 6000, then on track 091° to cross JYMME at or above 7000, then on track 125° to OWLLS, then on track 177° to SKTRR, then on track 202° to cross JASPA at or above 10000, thence..

TAKEOFF RUNWAY 35L: Climb on heading 356° to intercept course 013° to cross MECHL at or above 4000 and at or below 240K, then on track 092° to cross BORDD at or above 6000, then on track 091° to cross JYMME at or above 7000, then on track 125° to OWLLS, then on track 177° to SKTRR, then on track 202° to cross JASPA at or above 10000, thence. . . .

TAKEOFF RUNWAY 36L: Climb on heading 356° to intercept course 340° to GVINE, then on track 262° to cross KMART at or above 5500 and at or below 240K, then on track 259° to MARSN, then on track 220° to KELLR, then on track 173° to MYGAL, then on track 155° to cross JASPA at or above 10000, thence..

TAKEOFF RUNWAY 36R: Climb on heading 356° to intercept course 338° to GVINE, then on track 262° to cross KMART at or above 5500 and at or below 240K, then on track 259° to MARSN, then on track 220° to KELLR, then on track 173° to MYGAL, then on track 155° to cross JASPA at or above 10000, thence..

. . . (transition) maintain 10000, expect filed altitude 10 minutes after departure.

TAKEOFF RUNWAY 31L: Climb on heading 315° or as assigned by ATC, for vectors to JASPA, maintain 5000, expect filed altitude 10 minutes after departure.

TAKEOFF RUNWAY 31R: Climb on heading 311° or as assigned by ATC, for vectors to JASPA, maintain 5000, expect filed altitude 10 minutes after departure.

. . . (transition) maintain 10000, expect filed altitude 10 minutes after departure.

WINDU TRANSITION (JASPA7.WINDU):

SC-2, 22 FEB 2024 to 21 MAR 2024

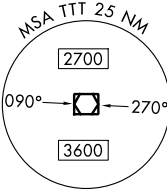
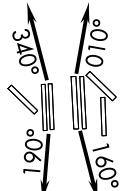
SC-2, 22 FEB 2024 to 21 MAR 2024

# JOE POOL SEVEN DEPARTURE

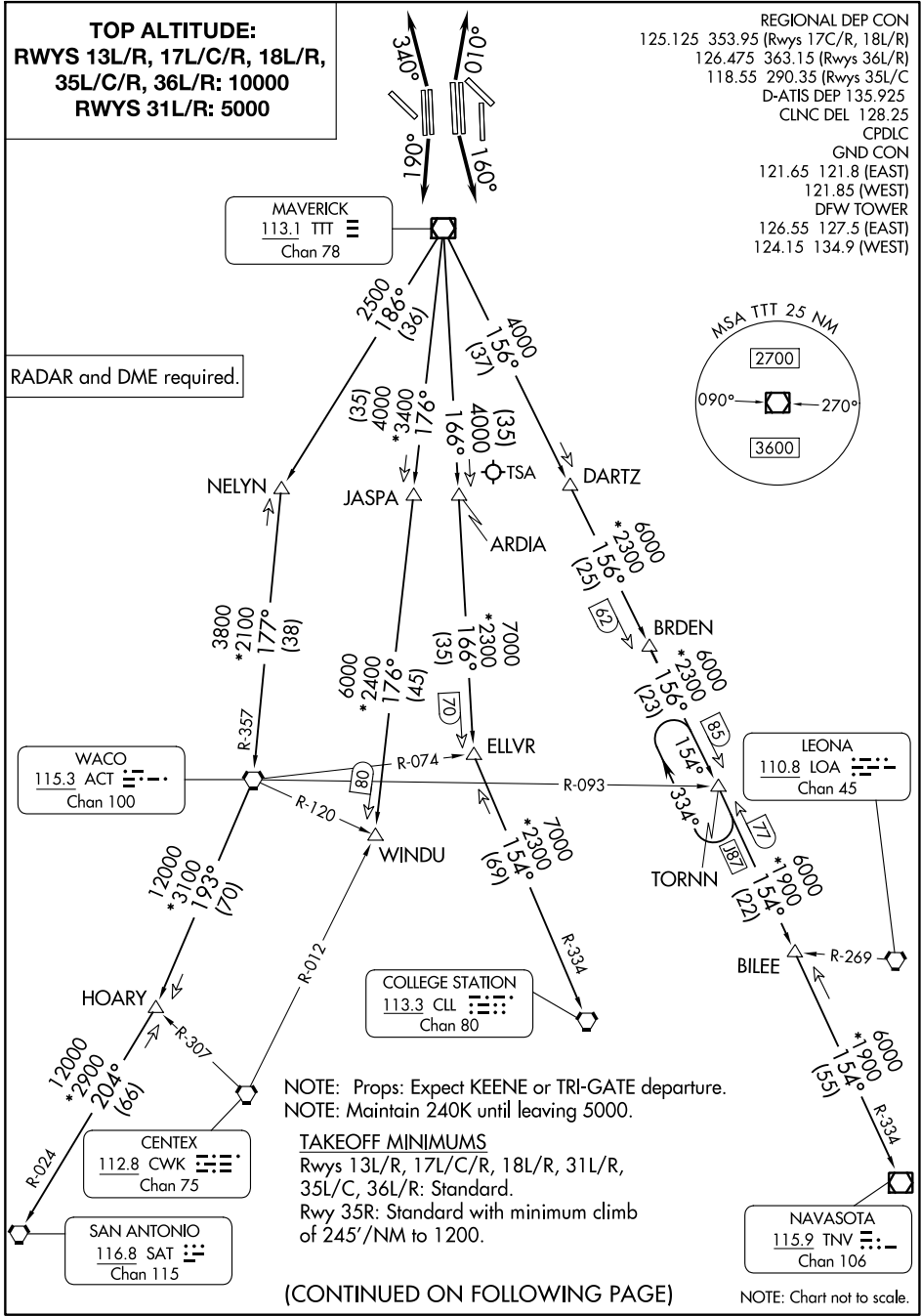
**TOP ALTITUDE:**  
RWYS 13L/R, 17L/C/R, 18L/R,  
35L/C/R, 36L/R: 10000  
RWYS 31L/R: 5000

REGIONAL DEP CON  
125.125 353.95 (Rwys 17C/R, 18L/R)  
126.475 363.15 (Rwys 36L/R)  
118.55 290.35 (Rwys 35L/C  
D-ATIS DEP 135.925  
CLNC DEL 128.25  
CPDLC  
GND CON  
121.65 121.8 (EAST)  
121.85 (WEST)  
DFW TOWER  
126.55 127.5 (EAST)  
124.15 134.9 (WEST)

MAVERICK  
113.1 TTT  
Chan 78



RADAR and DME required.



NOTE: Props: Expect KEENE or TRI-GATE departure.  
NOTE: Maintain 240K until leaving 5000.

**TAKEOFF MINIMUMS**

Rwys 13L/R, 17L/C/R, 18L/R, 31L/R,  
35L/C, 36L/R: Standard.  
Rwy 35R: Standard with minimum climb  
of 245'/NM to 1200.

(CONTINUED ON FOLLOWING PAGE)

NOTE: Chart not to scale.

SC-2, 22 FEB 2024 to 21 MAR 2024

SC-2, 22 FEB 2024 to 21 MAR 2024

# JOE POOL SEVEN DEPARTURE



# JOE POOL SEVEN DEPARTURE

## DEPARTURE ROUTE DESCRIPTION

TAKEOFF RUNWAYS 31L/R: Climb on assigned heading, maintain 5000, thence....  
TAKEOFF RUNWAYS 13L/R, 17L, 35R: Climb on assigned heading, maintain 10000, thence. . .  
TAKEOFF RUNWAYS 17C/R: Climb on heading 160°, maintain 10000, thence. . . .  
TAKEOFF RUNWAYS 18L/R: Climb on heading 190°, maintain 10000, thence. . . .  
TAKEOFF RUNWAYS 35L/C: Climb on heading 010°, maintain 10000, thence. . . .  
TAKEOFF RUNWAYS 36L/R: Climb on heading 340°, maintain 10000, thence. . . .

. . . for RADAR vectors to appropriate route and expect filed altitude 10 minutes after departure.

COLLEGE STATION TRANSITION (JPOOL7.CLL): From over TTT VOR/DME on TTT R-166 to ELLVR, then on CLL R-334 to CLL VORTAC.

ELLVR TRANSITION (JPOOL7.ELLVR): From over TTT VOR/DME on TTT R-166 to ELLVR.

HOARY TRANSITION (JPOOL7.HOARY): From over TTT VOR/DME on TTT R-186 to NELYN, then on ACT R-357 to ACT VORTAC, then on ACT R-193 to HOARY.

NAVASOTA TRANSITION (JPOOL7.TNV): From over TTT VOR/DME on TTT R-156 to TORNN, then on TNV R-334 to TNV VOR/DME.

SAN ANTONIO TRANSITION (JPOOL7.SAT): From over TTT VOR/DME on TTT R-186 to NELYN, then on ACT R-357 to ACT VORTAC, then on ACT R-193 to HOARY, then on SAT R-024 to SAT VORTAC.

TORNNN TRANSITION (JPOOL7.TORNNN): From over TTT VOR/DME on TTT R-156 to TORNN.

WACO TRANSITION (JPOOL7.ACT): From over TTT VOR/DME on TTT R-186 to NELYN, then on ACT R-357 to ACT VORTAC.

WINDU TRANSITION (JPOOL7.WINDU): From over TTT VOR/DME on TTT R-176 to WINDU.

NOTE: COLLEGE STATION Transition: For piston and turboprop aircraft destined to HOU, EFD, GLS, or LBX. Also for all other aircraft types destined to all other Houston terminal area airports except IAH, CXO, DWH, T78 or 6R3.

NOTE: ELLVR Transition: For turbojet aircraft destined to HOU, EFD, GLS, or LBX.

NOTE: SAN ANTONIO Transition: For aircraft overflying Centex and San Antonio.

NOTE: TORNNN Transition: Only for aircraft destined IAH, CXO, DWH, T78 or 6R3.

NOTE: WACO Transition: For aircraft inbound to Waco or Gray terminal area airports.

NOTE: WINDU Transition: For aircraft inbound to Austin or San Antonio terminal area.

SC-2, 22 FEB 2024 to 21 MAR 2024

SC-2, 22 FEB 2024 to 21 MAR 2024

**TOP ALTITUDE:**  
RWY 17C/R, 18L/R,  
35C/L, 36L/R: 10000  
RWY 31L/R: 5000

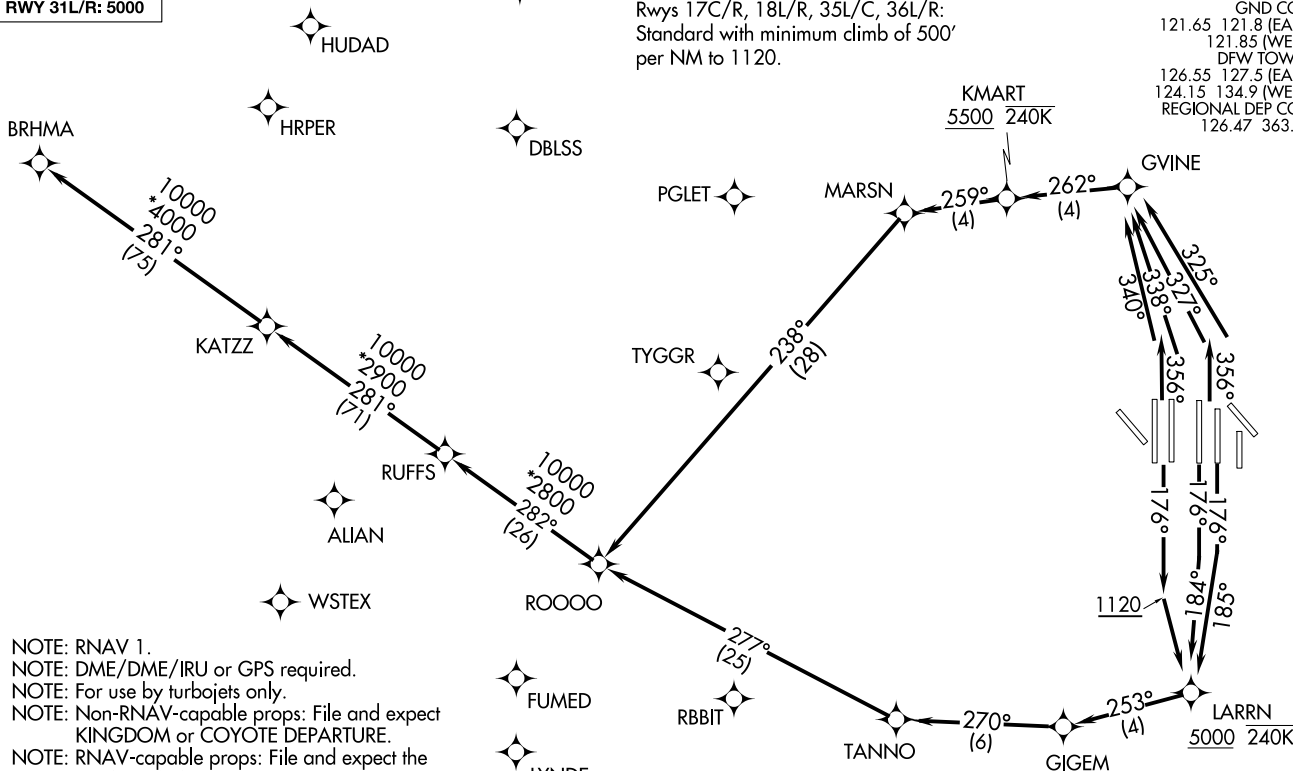
TAKEOFF MINIMUMS

Rwys 31L/R: Standard.  
Rwys 17C/R, 18L/R, 35L/C, 36L/R:  
Standard with minimum climb of 500'  
per NM to 1120.

D-ATIS DEP 135.925  
CLNC DEL 128.25  
CPDLC  
GND CON  
121.65 121.8 (EAST)  
121.85 (WEST)  
DFW TOWER  
126.55 127.5 (EAST)  
124.15 134.9 (WEST)  
REGIONAL DEP CON  
126.47 363.15

KATZZ TWO DEPARTURE (RNAV)  
(KATZZ2.KATZZ) 04FEB16

DALLAS-FORT WORTH, TEXAS  
DALLAS-FORT WORTH INTL (DFW)



NOTE: RNAV 1.  
NOTE: DME/DME/IRU or GPS required.  
NOTE: For use by turbojets only.  
NOTE: Non-RNAV-capable props: File and expect KINGDOM or COYOTE DEPARTURE.  
NOTE: RNAV-capable props: File and expect the SWABR RNAV SID.  
NOTE: RADAR required.

(NARRATIVE ON FOLLOWING PAGE)

NOTE: Chart not to scale

(KATZZ2.KATZZ) 23334  
KATZZ TWO DEPARTURE (RNAV)

AL-6039 (FAA)

DALLAS-FORT WORTH INTL (DFW)  
DALLAS-FORT WORTH, TEXAS



DEPARTURE ROUTE DESCRIPTION

TAKEOFF RWY 17C: Climb heading 176° to intercept course 185° to cross LARRN at or above 5000, then on track 253° to GIGEM, then on track 270° to TANNO, then on track 277° to ROOOO, thence. . . .

TAKEOFF RWY 17R: Climb heading 176° to intercept course 184° to cross LARRN at or above 5000, then on track 253° to GIGEM, then on track 270° to TANNO, then on track 277° to ROOOO, thence. . . .

TAKEOFF RWY 18L/R: Climb heading 176° to 1120, then direct to cross LARRN at or above 5000, then on track 253° to GIGEM, then on track 270° to TANNO, then on track 277° to ROOOO, thence. . . .

TAKEOFF RWY 35C: Climb heading 356° to intercept course 325° to GVINE, then on track 262° to cross KMART at or above 5500, then on track 259° to MARSN, then on track 238° to ROOOO, thence. . . .

TAKEOFF RWY 35L: Climb heading 356° to intercept course 327° to GVINE, then on track 262° to cross KMART at or above 5500, then on track 259° to MARSN, then on track 238° to ROOOO, thence. . . .

TAKEOFF RWY 36L: Climb heading 356° to intercept course 340° to GVINE, then on course 262° to cross KMART at or above 5500, then on track 259° to MARSN, then on track 238° to ROOOO, thence. . . .

TAKEOFF RWY 36R: Climb heading 356° to intercept course 338° to GVINE, then on course 262° to cross KMART at or above 5500, then on track 259° to MARSN, then on track 238° to ROOOO, thence. . . .

. . . .on track 282° to RUFFS, then on track 281° to KATZZ, then on (transition).  
Maintain 10000, expect filed altitude 10 minutes after departure.

TAKEOFF RWY 31L/R: Climb heading assigned by ATC, expect radar vectors to ROOOO, thence. . . .

. . . .on track 282° to RUFFS, then on track 281° to KATZZ, then on (transition).  
Maintain 5000, expect filed altitude ten minutes after departure.

BRHMA TRANSITION (KATZZ2.BRHMA)

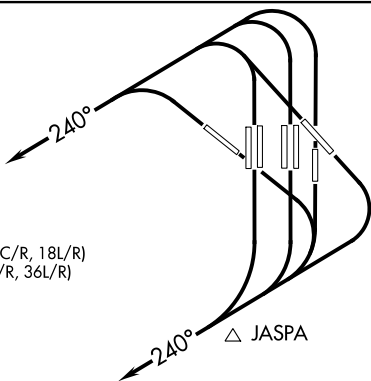
SC-2, 22 FEB 2024 to 21 MAR 2024

SC-2, 22 FEB 2024 to 21 MAR 2024

# KEENE FOUR DEPARTURE

**TOP ALTITUDE:  
2000**

D-ATIS DEP  
 135.925  
 CLNC DEL  
 128.25  
 CPDLC  
 GND CON  
 121.65 121.8 (EAST)  
 121.85 (WEST)  
 DFW TOWER  
 126.55 127.5 (EAST)  
 124.15 134.9 (WEST)  
 REGIONAL DEP CON  
 135.975 379.9 (Rwys 13L/R, 17L/C/R, 18L/R)  
 118.1 306.95 (Rwys 31L/R, 35L/C/R, 36L/R)



WACO  
 115.3 ACT   
 Chan 100



ELLVR  
△

WINDU  
△

TORNN  
△

BILEE  
△

NOTE: For non-Turbojet aircraft only.  
 NOTE: RADAR required.  
 NOTE: JASPA TRANSITION: ATC assigned.

COLLEGE STATION  
 113.3 CLL   
 Chan 80



NAVASOTA  
 115.9 TNV   
 Chan 106



### TAKEOFF MINIMUMS

Rwys 13L/R, 17L/C/R, 18L/R, 31L/R, 35L/C, 36L/R: Standard.  
 Rwy 35R: 300-1¾ or standard with minimum climb of 230' per NM to 800, or alternatively, with standard takeoff minimums and a normal 200' per NM climb gradient, takeoff must occur no later than 1700' prior to DER.

NOTE: Chart not to scale.



### DEPARTURE ROUTE DESCRIPTION

#### NON-TURBOJET AIRCRAFT ONLY

TAKEOFF ALL RUNWAYS: Climb on heading 240° for RADAR vectors to appropriate fix.  
 Maintain 2000 and expect filed altitude 10 minutes after departure.

KINGDOM FOUR DEPARTURE  
(KING4.TTT) 25JAN24

DALLAS-FORT WORTH, TEXAS  
DALLAS-FORT WORTH INTL (DFW)

(KING4.TTT) 24053  
KINGDOM FOUR DEPARTURE

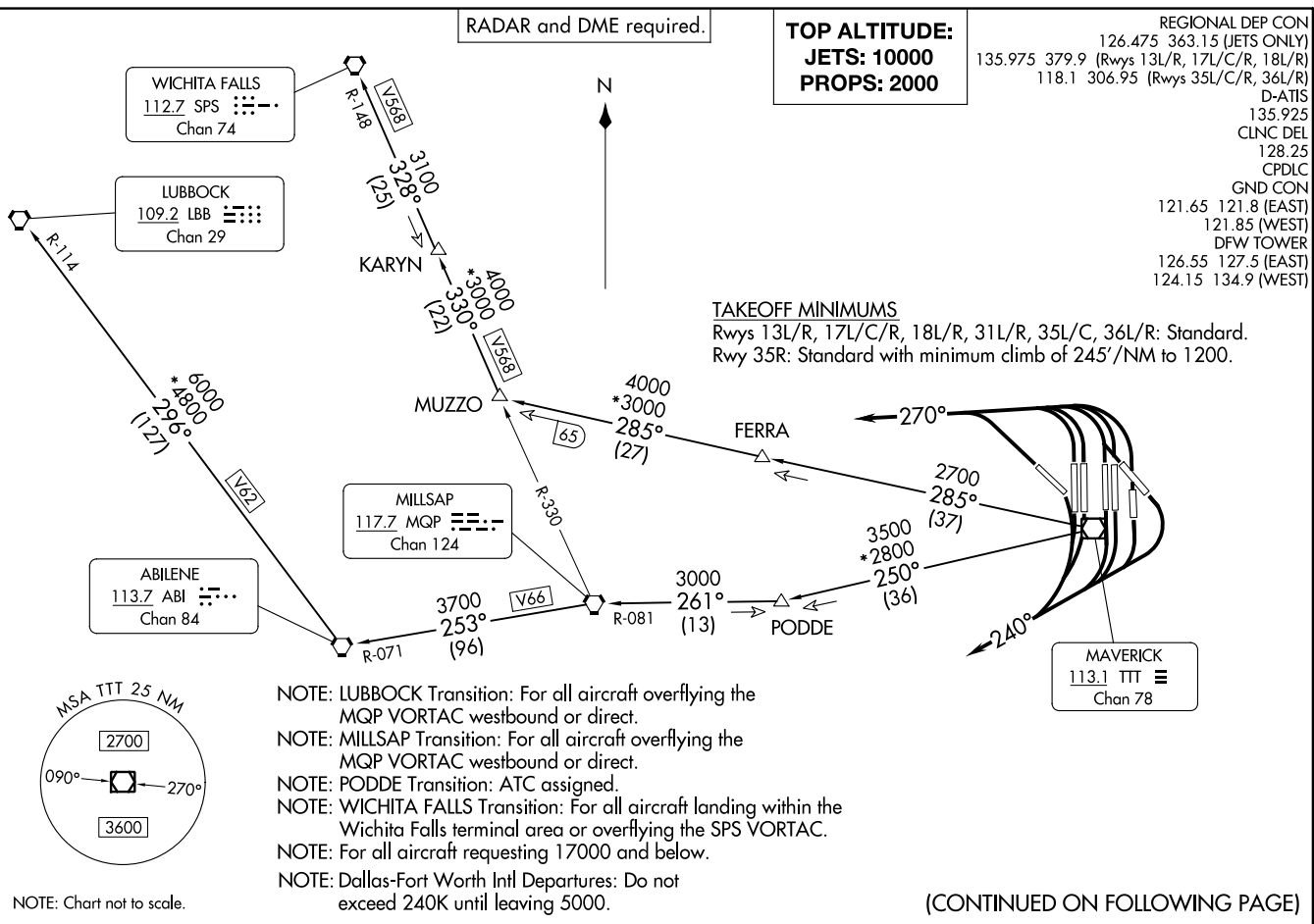
AL-6039 (FAA)

DALLAS-FORT WORTH INTL (DFW)  
DALLAS-FORT WORTH, TEXAS

REGIONAL DEP CON  
126.475 363.15 (JETS ONLY)  
135.975 379.9 (Rwys 13L/R, 17L/C/R, 18L/R)  
118.1 306.95 (Rwys 35L/C/R, 36L/R)  
D-ATIS 135.925  
CLNC DEL 128.25  
CPDLC 128.25  
GND CON 121.65 121.8 (EAST)  
121.85 (WEST)  
DFW TOWER 126.55 127.5 (EAST)  
124.15 134.9 (WEST)

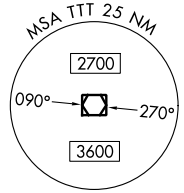
**TOP ALTITUDE:**  
**JETS: 10000**  
**PROPS: 2000**

RADAR and DME required.



TAKEOFF MINIMUMS  
Rwys 13L/R, 17L/C/R, 18L/R, 31L/R, 35L/C, 36L/R: Standard.  
Rwy 35R: Standard with minimum climb of 245'/NM to 1200.

- NOTE: LUBBOCK Transition: For all aircraft overflying the MQP VORTAC westbound or direct.
- NOTE: MILLSAP Transition: For all aircraft overflying the MQP VORTAC westbound or direct.
- NOTE: PODDE Transition: ATC assigned.
- NOTE: WICHITA FALLS Transition: For all aircraft landing within the Wichita Falls terminal area or overflying the SPS VORTAC.
- NOTE: For all aircraft requesting 17000 and below.
- NOTE: Dallas-Fort Worth Intl Departures: Do not exceed 240K until leaving 5000.



NOTE: Chart not to scale.

(CONTINUED ON FOLLOWING PAGE)

# KINGDOM FOUR DEPARTURE



## DEPARTURE ROUTE DESCRIPTION

### JETS

TAKEOFF RUNWAYS 13L/R, 17L/C/R, 18L/R, 31L/R, 35L/C/R, 36L/R: Climb on assigned heading for RADAR vectors to appropriate route, thence. . .

. . .maintain 10000 and expect filed altitude 10 minutes after departure.

### PROPS

TAKEOFF RUNWAYS 13L/R, 17L/C/R, 18L/R: Climb on heading 240° then on assigned heading for RADAR vectors to appropriate route, thence. . .

TAKEOFF RUNWAYS 31L/R, 35L/C/R, 36L/R: Climb on heading 270° then on assigned heading for RADAR vectors to appropriate route, thence. . .

. . .maintain 2000 and expect filed altitude 10 minutes after departure.

LUBBOCK TRANSITION (KING4.LBB): From over TTT VOR/DME on TTT R-250 to PODDE, then on MQP R-081 to MQP VORTAC, then on MQP R-253 and ABI R-071 to ABI VORTAC, then on ABI R-296 and LBB R-114 to LBB VORTAC.

MILLSAP TRANSITION (KING4.MQP): From over TTT VOR/DME on TTT R-250 to PODDE, then on MQP R-081 to MQP VORTAC.

PODDE TRANSITION (KING4.PODDE): From over TTT VOR/DME on TTT R-250 to PODDE.

WICHITA FALLS TRANSITION (KING4.SPS): From over TTT VOR/DME on TTT R-285 to MUZZO, then on MQP R-330 and SPS R-148 to KARYN, then on SPS R-148 to SPS VORTAC.

SC-2, 22 FEB 2024 to 21 MAR 2024

SC-2, 22 FEB 2024 to 21 MAR 2024

KUSSO ONE DEPARTURE (RNAV)  
(KUSSO1 .KUSSO) 24MAR22

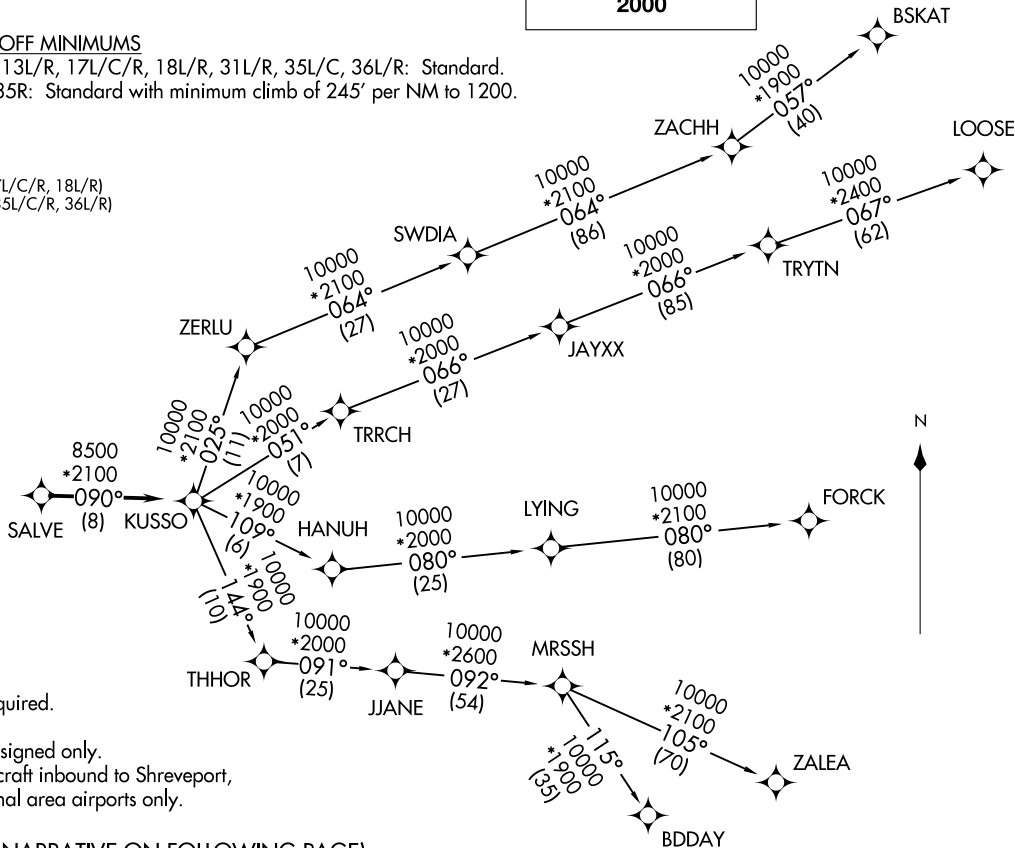
DALLAS-FORT WORTH, TEXAS  
DALLAS-FORT WORTH INTL (DFW)

D-ATIS DEP  
135.925  
CLNC DEL  
128.25  
CPDLC  
GND CON  
121.65 121.8 (EAST)  
121.85 (WEST)  
DFW TOWER  
126.55 127.5 (EAST)  
124.15 134.9 (WEST)  
REGIONAL DEP CON  
125.2 343.65 (Props Only Rwy 13L/R, 17L/C/R, 18L/R)  
124.3 282.275 (Props Only Rwy 31L/R, 35L/C/R, 36L/R)

TAKEOFF MINIMUMS

Rwys 13L/R, 17L/C/R, 18L/R, 31L/R, 35L/C, 36L/R: Standard.  
Rwy 35R: Standard with minimum climb of 245' per NM to 1200.

**TOP ALTITUDE:  
2000**



- NOTE: RADAR required.
- NOTE: RNAV 1.
- NOTE: DME/DME/IRU or GPS required.
- NOTE: Props only.
- NOTE: BDDAY Transition: ATC assigned only.
- NOTE: MRSSH Transition: For aircraft inbound to Shreveport, Jackson and Monroe terminal area airports only.

(NARRATIVE ON FOLLOWING PAGE)

NOTE: Chart not to scale.

(KUSSO1 .KUSSO) 23334  
KUSSO ONE DEPARTURE (RNAV)

DALLAS-FORT WORTH INTL (DFW)  
DALLAS-FORT WORTH, TEXAS

AL-6039 (FAA)

# KUSSO ONE DEPARTURE (RNAV)



## DEPARTURE ROUTE DESCRIPTION

TAKEOFF RUNWAYS 13L/R, 17L/C/R, 18L/R, 31L/R, 35L/C/R, 36L/R: Climb on assigned heading for RADAR vectors to SALVE. Thence . . . .

. . . . on track 090° to KUSSO, then on (transition). Maintain 2000. Expect filed altitude 10 minutes after departure.

- BDDAY TRANSITION (KUSSO1.BDDAY)
- BSKAT TRANSITION (KUSSO1.BSKAT)
- FORCK TRANSITION (KUSSO1.FORCK)
- LOOSE TRANSITION (KUSSO1.LOOSE)
- MRSSH TRANSITION (KUSSO1.MRSSH)
- ZALEA TRANSITION (KUSSO1.ZALEA)

SC-2, 22 FEB 2024 to 21 MAR 2024

SC-2, 22 FEB 2024 to 21 MAR 2024



# LOWGN EIGHT DEPARTURE (RNAV)

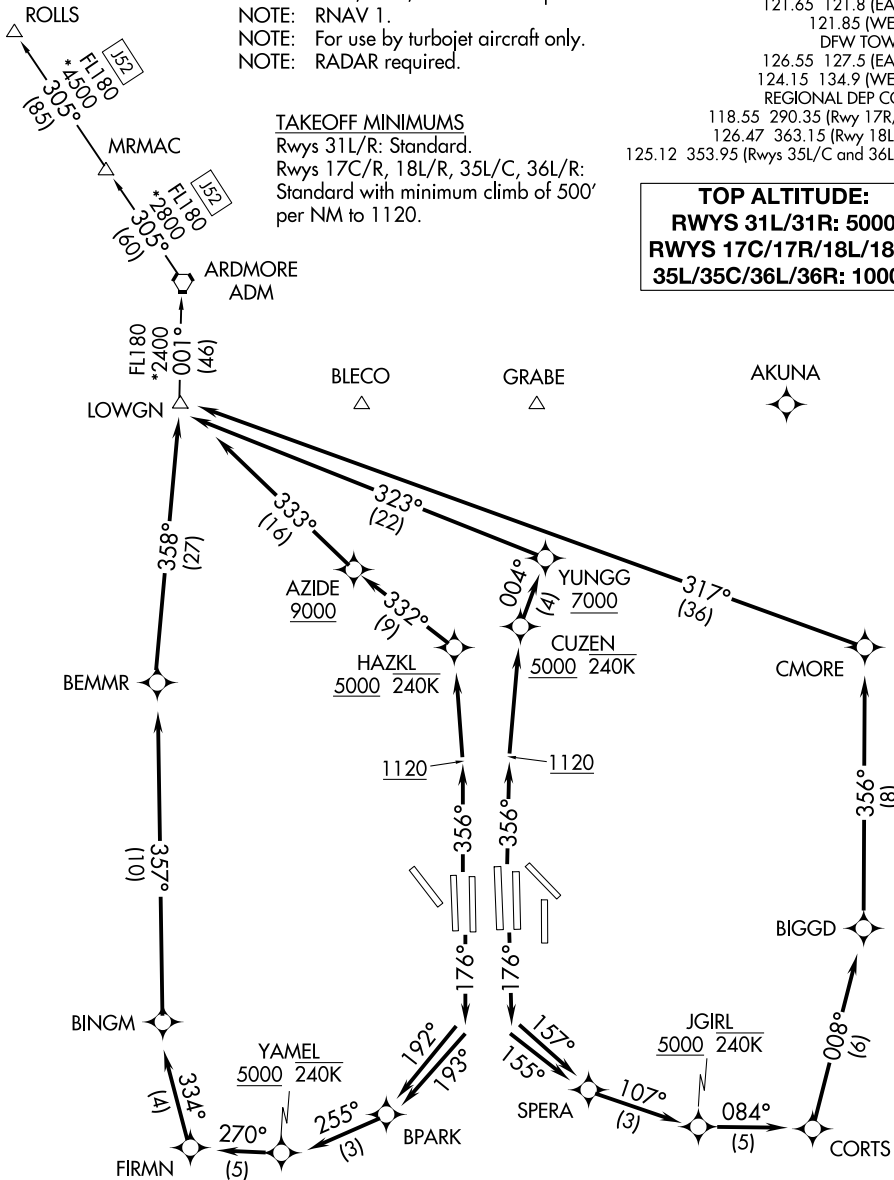
NOTE: ROLLS TRANSITION: For all aircraft proceeding northwest bound on J52.  
 NOTE: DME/DME/IRU or GPS required.  
 NOTE: RNAV 1.  
 NOTE: For use by turbojet aircraft only.  
 NOTE: RADAR required.

D-ATIS DEP 135.925  
 CLNC DEL 128.25  
 CPDLC  
 GND CON  
 121.65 121.8 (EAST)  
 121.85 (WEST)  
 DFW TOWER  
 126.55 127.5 (EAST)  
 124.15 134.9 (WEST)  
 REGIONAL DEP CON  
 118.55 290.35 (Rwy 17R/C)  
 126.47 363.15 (Rwy 18L/R)  
 125.12 353.95 (Rwys 35L/C and 36L/R)

### TAKEOFF MINIMUMS

Rwys 31L/R: Standard.  
 Rwys 17C/R, 18L/R, 35L/C, 36L/R:  
 Standard with minimum climb of 500'  
 per NM to 1120.

**TOP ALTITUDE:**  
**RWYS 31L/31R: 5000**  
**RWYS 17C/17R/18L/18R/  
 35L/35C/36L/36R: 10000**



NOTE: Chart not to scale.

(NARRATIVE ON FOLLOWING PAGE)

SC-2, 22 FEB 2024 to 21 MAR 2024

SC-2, 22 FEB 2024 to 21 MAR 2024

# LOWGN EIGHT DEPARTURE (RNAV)

LOWGN EIGHT DEPARTURE (RNAV)



DEPARTURE ROUTE DESCRIPTION

TAKEOFF RWY 17C: Climb heading 176° to intercept course 157° to SPERA, then on track 107° to cross JGIRL at or above 5000 and at or below 240K, then on depicted route to LOWGN, thence. . . .

TAKEOFF RWY 17R: Climb heading 176° to intercept course 155° to SPERA, then on track 107° to cross JGIRL at or above 5000 and at or below 240K, then on depicted route to LOWGN, thence. . . .

TAKEOFF RWY 18L: Climb heading 176° to intercept course 193° to BPARK, then on track 255° to cross YAMEL at or above 5000 and at or below 240K, then on depicted route to LOWGN, thence. . . .

TAKEOFF RWY 18R: Climb heading 176° to intercept course 192° to BPARK, then on track 255° to cross YAMEL at or above 5000 and at or below 240K, then on depicted route to LOWGN, thence. . . .

TAKEOFF RWYS 35C/L: Climb heading 356° to 1120, then direct CUZEN, cross CUZEN at or above 5000 and at or below 240K, then on track 004° to cross YUNGG at or above 7000, then on depicted route to LOWGN, thence. . . .

TAKEOFF RWYS 36L/R: Climb heading 356° to 1120, then direct HAZKL, cross HAZKL at or above 5000 and at or below 240K, then on track 332° to cross AZIDE at or above 9000, then on depicted route to LOWGN, thence. . . .

. . . .on (transition) maintain 10000. Expect filed altitude ten minutes after departure.

TAKEOFF RWYS 31L/R: Climb heading assigned by ATC, expect RADAR vectors to LOWGN, thence. . . .

. . . .on (transition) maintain 5000. Expect filed altitude ten minutes after departure.

ARDMORE TRANSITION (LOWGN8.ADM)

ROLLS TRANSITION (LOWGN8.ROLLS)

SC-2, 22 FEB 2024 to 21 MAR 2024

SC-2, 22 FEB 2024 to 21 MAR 2024

MRSSH THREE DEPARTURE (RNAV)  
 (MRSSH3.MRSSH) 08SEP22  
 DALLAS-FORT WORTH, TEXAS  
 DALLAS-FORT WORTH INTL (DFW)

D-ATIS DEP 135.925  
 CLNC DEL 128.25  
 CPDLC  
 GND CON  
 121.65 121.8 (EAST)  
 121.85 (WEST)  
 DFW TOWER  
 126.55 127.5 (EAST)  
 124.15 134.9 (WEST)  
 REGIONAL DEP CON  
 118.55 290.35

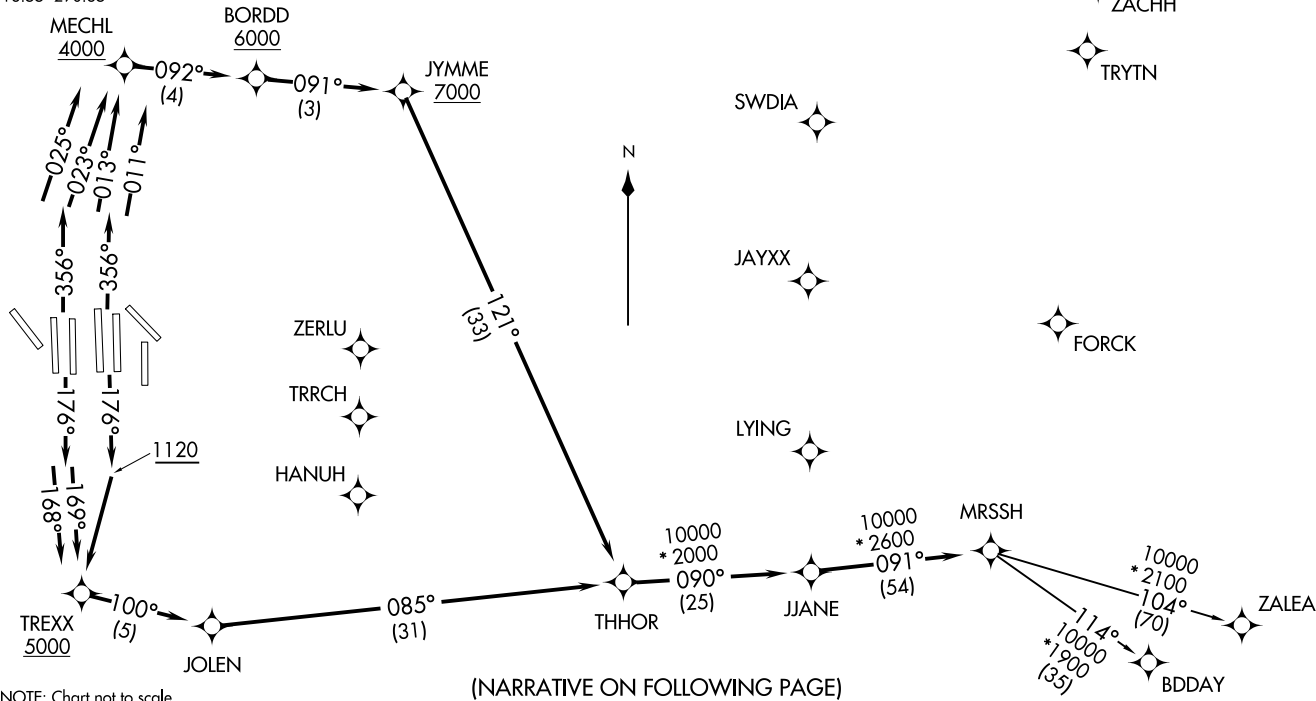
NOTE: BDDAY Transition: ATC assigned only.  
 NOTE: For use by turbojet aircraft only.  
 NOTE: Non-RNAV capable props: file and expect DALLAS or GARLAND DEPARTURE.  
 NOTE: RNAV-capable props: file and expect the KUSSO RNAV DEPARTURE.

RNAV 1 - DME/DME/IRU or GPS.  
 RADAR required.

**TOP ALTITUDE:**  
**RWYS 31L/R: 5000**  
**RWYS 17C/R, 18L/R, 35L/C, 36L/R: 10000**

TAKEOFF MINIMUMS

Rwys 31L/R: Standard.  
 Rwys 17C/R, 18L/R, 35L/C, 36L/R: Standard with minimum climb of 500' per NM to 1120.



NOTE: Chart not to scale.

(NARRATIVE ON FOLLOWING PAGE)

MRSSH THREE DEPARTURE (RNAV)  
 (MRSSH3.MRSSH) 23334  
 AL-6039 (FAA)  
 DALLAS-FORT WORTH INTL (DFW)  
 DALLAS-FORT WORTH, TEXAS



DEPARTURE ROUTE DESCRIPTION

TAKEOFF RUNWAYS 17C/R: Climb on heading 176° to 1120, then direct to cross TREXX at or above 5000, then on track 100° to JOLEN, then on track 085° to THHOR, thence . . . .

TAKEOFF RUNWAY 18L: Climb on heading 176° to intercept course 169° to cross TREXX at or above 5000, then on track 100° to JOLEN, then on track 085° to THHOR, thence . . . .

TAKEOFF RUNWAY 18R: Climb on heading 176° to intercept course 168° to cross TREXX at or above 5000, then on track 100° to JOLEN, then on track 085° to THHOR, thence . . . .

TAKEOFF RUNWAY 35C: Climb on heading 356° to intercept course 011° to cross MECHL at or above 4000, then on track 092° to cross BORDD at or above 6000, then on track 091° to cross JYMME at or above 7000, then on track 121° to THHOR, thence . . . .

TAKEOFF RUNWAY 35L: Climb on heading 356° to intercept course 013° to cross MECHL at or above 4000, then on track 092° to cross BORDD at or above 6000, then on track 091° to cross JYMME at or above 7000, then on track 121° to THHOR, thence . . . .

TAKEOFF RUNWAY 36L: Climb on heading 356° to intercept course 025° to cross MECHL at or above 4000, then on track 092° to cross BORDD at or above 6000, then on track 091° to cross JYMME at or above 7000, then on track 121° to THHOR, thence . . . .

TAKEOFF RUNWAY 36R: Climb on heading 356° to intercept course 023° to cross MECHL at or above 4000, then on track 092° to cross BORDD at or above 6000, then on track 091° to cross JYMME at or above 7000, then on track 121° to THHOR, thence . . . .

. . . . on track 090° to JJANE, then on track 091° to MRSSH, then on (transition).  
Maintain 10000, expect filed altitude 10 minutes after departure.

TAKEOFF RUNWAYS 31L/R: Climb on heading assigned by ATC for RADAR vectors to THHOR, thence . . . .

. . . . on track 090° to JJANE, then on track 091° to MRSSH, then on (transition).  
Maintain 5000, expect filed altitude 10 minutes after departure.

BDDAY TRANSITION (MRSSH3.BDDAY)

ZALEA TRANSITION (MRSSH3.ZALEA)

SC-2, 22 FEB 2024 to 21 MAR 2024

SC-2, 22 FEB 2024 to 21 MAR 2024

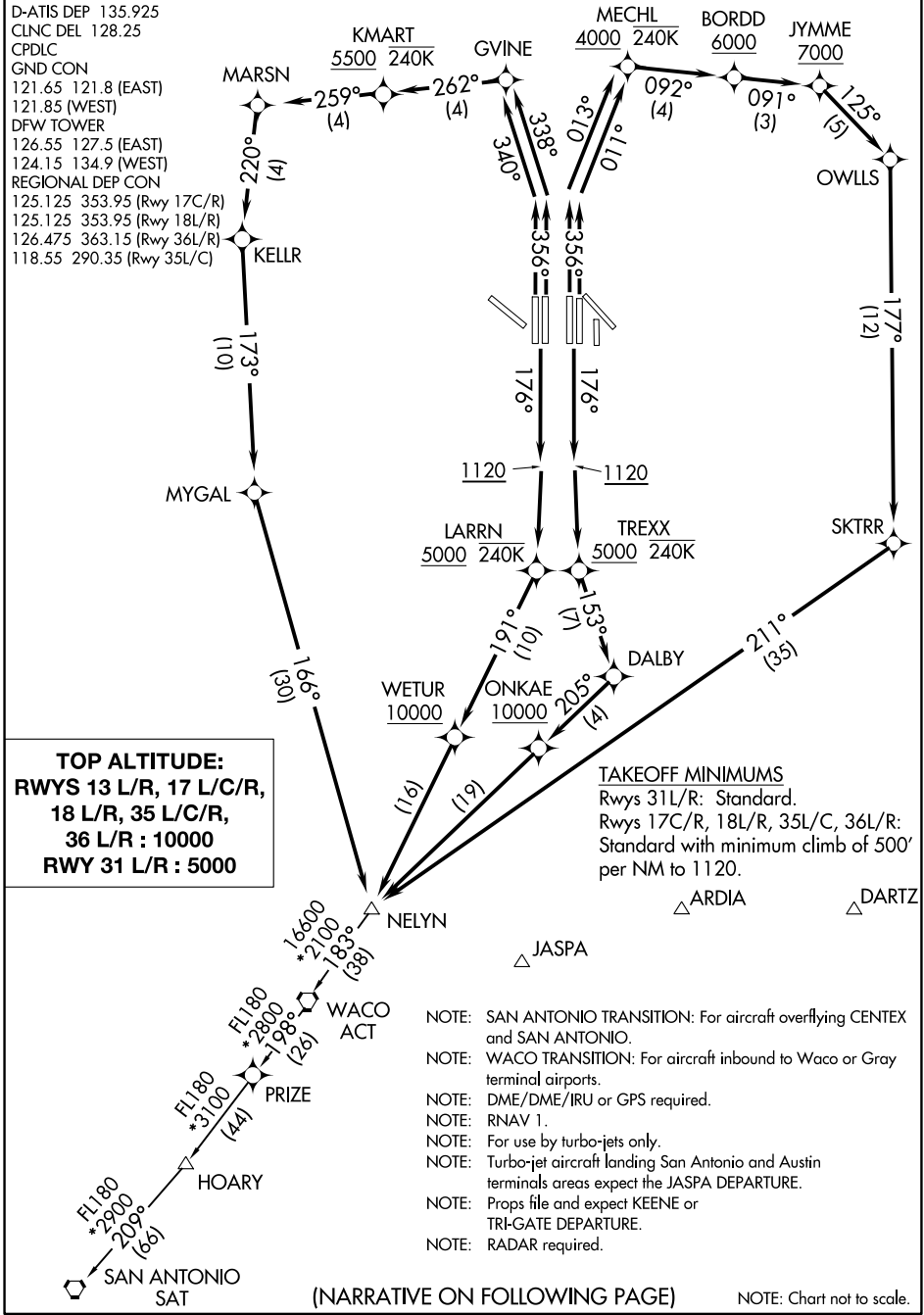
(NELYN6.NELYN) 23334

AL-6039 (FAA)

DALLAS-FORT WORTH INTL (DFW)

# NELYN SIX DEPARTURE (RNAV)

DALLAS-FORT WORTH, TEXAS



SC-2, 22 FEB 2024 to 21 MAR 2024

SC-2, 22 FEB 2024 to 21 MAR 2024

# NELYN SIX DEPARTURE (RNAV)

(NELYN6.NELYN) 10OCT19

DALLAS-FORT WORTH, TEXAS

DALLAS-FORT WORTH INTL (DFW)



DEPARTURE ROUTE DESCRIPTION

TAKEOFF RUNWAYS 17C/R: Climb on heading 176° to 1120, then direct TREXX, cross TREXX at or above 5000 and at or below 240K, then on track 153° to DALBY, then on track 205° to cross ONKAE at or above 10000, then on depicted route to NELYN, thence. . . .

TAKEOFF RUNWAYS 18L/R: Climb on heading 176° to 1120, then direct LARRN, cross LARRN at or above 5000 and at or below 240K, then on track 191° to cross WETUR at or above 10000, then on depicted route to NELYN, thence. . . .

TAKEOFF RUNWAY 35C: Climb on heading 356° to intercept course 011° to cross MECHL at or above 4000 and at or below 240K, then on track 092° to cross BORDD at or above 6000, then on track 091° to cross JYMME at or above 7000, then on depicted route to NELYN, thence. . . .

TAKEOFF RUNWAY 35L: Climb on heading 356° to intercept course 013° to cross MECHL at or above 4000 and at or below 240K, then on track 092° to cross BORDD at or above 6000, then on track 091° to cross JYMME at or above 7000, then on depicted route to NELYN, thence. . . .

TAKEOFF RUNWAY 36L: Climb on heading 356° to intercept course 340° to GVINE, then on course 262° to cross KMART at or above 5500 and at or below 240K, then on depicted route to NELYN, thence. . . .

TAKEOFF RUNWAY 36R: Climb on heading 356° to intercept course 338° to GVINE, then on course 262° to cross KMART at or above 5500 and at or below 240K, then on depicted route to NELYN, thence. . . .

TAKEOFF RUNWAYS 31L/R: Climb on heading assigned by ATC, expect RADAR vectors to NELYN, maintain 5000, expect filed altitude ten minutes after departure.

. . . .(transition) Maintain 10000, expect filed altitude ten minutes after departure.

HOARY TRANSITION (NELYN6.HOARY):

SAN ANTONIO TRANSITION (NELYN6.SAT):

WACO TRANSITION (NELYN6.ACT):

SC-2, 22 FEB 2024 to 21 MAR 2024

SC-2, 22 FEB 2024 to 21 MAR 2024

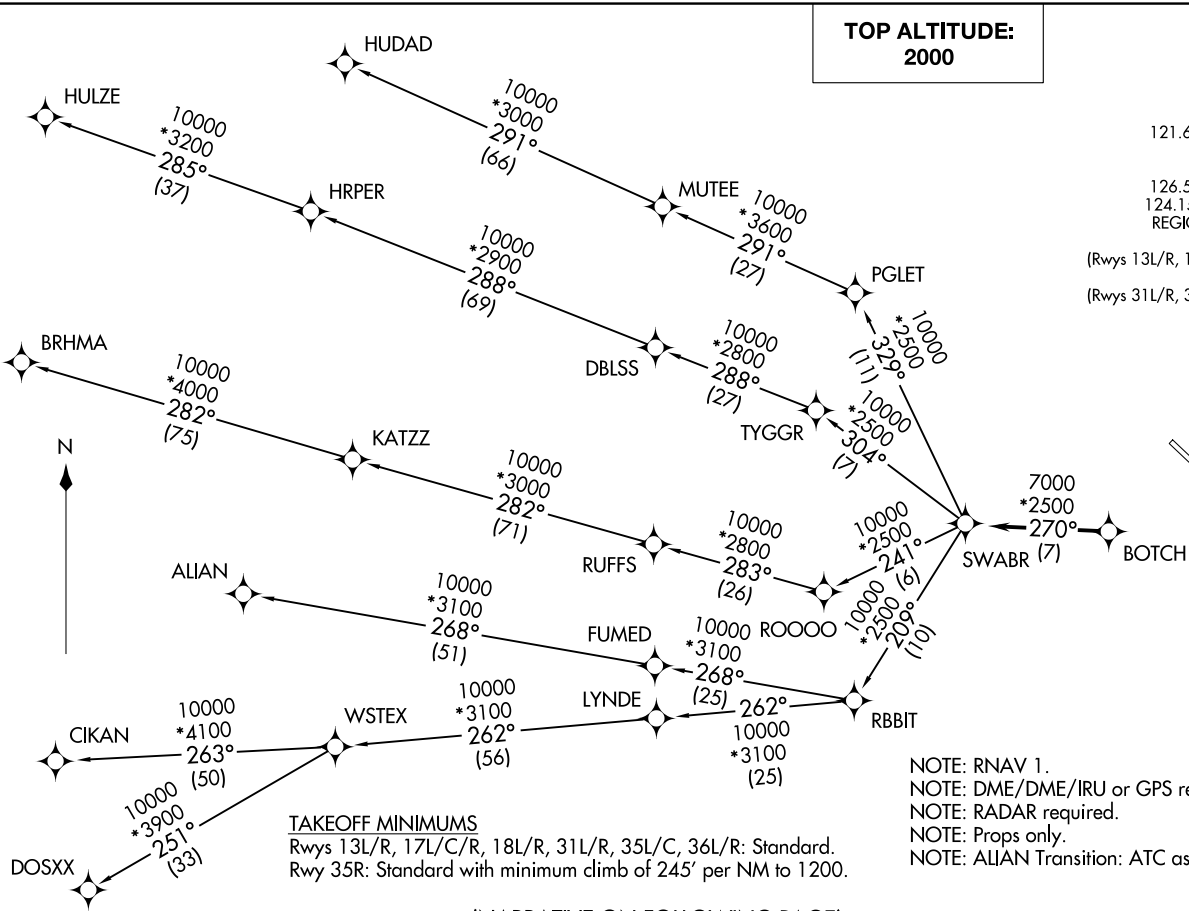
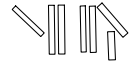
**TOP ALTITUDE:  
2000**

D-ATIS DEP 135.925  
 CLNC DEL 128.25  
 CPDLC  
 GND CON 121.65 121.8 (EAST)  
 121.85 (WEST)  
 DFW TOWER 126.55 127.5 (EAST)  
 124.15 134.9 (WEST)  
 REGIONAL DEP CON 135.975 379.9  
 (Rwys 13L/R, 17L/C/R, 18L/R)  
 118.1 306.95  
 (Rwys 31L/R, 35L/C/R, 36L/R)

(SWABR1 .SWABR) 23334  
SWABR ONE DEPARTURE (RNAV)

AL-6039 (FAA)

DALLAS-FORT WORTH INTL (DFW)  
DALLAS-FORT WORTH, TEXAS



**TAKEOFF MINIMUMS**  
 Rwys 13L/R, 17L/C/R, 18L/R, 31L/R, 35L/C, 36L/R: Standard.  
 Rwy 35R: Standard with minimum climb of 245' per NM to 1200.

NOTE: RNAV 1.  
 NOTE: DME/DME/IRU or GPS required.  
 NOTE: RADAR required.  
 NOTE: Props only.  
 NOTE: ALIAN Transition: ATC assigned only.

(NARRATIVE ON FOLLOWING PAGE)

NOTE: Chart not to scale.

SWABR ONE DEPARTURE (RNAV)  
(SWABR1 .SWABR) 24MAR22

DALLAS-FORT WORTH, TEXAS  
DALLAS-FORT WORTH INTL (DFW)

# SWABR ONE DEPARTURE (RNAV)



## DEPARTURE ROUTE DESCRIPTION

TAKEOFF RUNWAYS 13L/R, 17L/C/R, 18L/R, 31L/R, 35L/C/R, 36L/R: Climb on assigned heading for RADAR vectors to BOTCH. Then on track 270° to SWABR, then on (transition). Maintain 2000. Expect filed altitude 10 minutes after departure.

ALIAN TRANSITION (SWABR1.ALIAN)

BRHMA TRANSITION (SWABR1.BRHMA)

CIKAN TRANSITION (SWABR1.CIKAN)

DOSXX TRANSITION (SWABR1.DOSXX)

HUDAD TRANSITION (SWABR1.HUDAD)

HULZE TRANSITION (SWABR1.HULZE)

WSTEX TRANSITION (SWABR1.WSTEX)

SC-2, 22 FEB 2024 to 21 MAR 2024

SC-2, 22 FEB 2024 to 21 MAR 2024



# TEXOMA FIVE DEPARTURE

### REGIONAL DEP CON

118.55 290.35 (Rwys 17C/R)  
 126.475 363.15 (Rwys 18L/R)  
 125.125 353.95 (Rwys 35L/C, 36L/R)  
 D-ATIS DEP  
 135.925  
 CLNC DEL  
 128.25  
 CPDLC  
 GND CON 121.65 121.8 (EAST)  
 121.85 (WEST)  
 DFW TOWER 126.55 127.5 (EAST)  
 124.15 134.9 (WEST)

RADAR and DME required.

TULSA  
 114.4 TUL  
 Chan 91

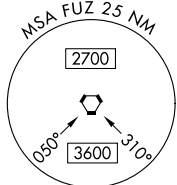
WILL ROGERS  
 114.1 IRW  
 Chan 88

OKMULGEE  
 114.9 OKM  
 Chan 96

ARDMORE  
 116.7 ADM  
 Chan 114

BONHAM  
 114.6 BYP  
 Chan 93

RANGER  
 115.7 FUZ  
 Chan 104



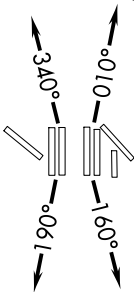
### TAKEOFF MINIMUMS

Rwys 13L/R, 17L/C/R, 18L/R,  
 31L/R, 35L/C, 36L/R: Standard.  
 Rwy 35R: Standard with minimum  
 climb of 245'/NM to 1200.

NOTE: PROPS: Expect JACKY or  
 TRIGATE DEPARTURE.  
 NOTE: Maintain 240K until leaving 5000.

**TOP ALTITUDE:**  
 Rwys 13L/R, 17L/C/R,  
 18L/R, 35L/C/R,  
 36L/R: 10000  
 Rwys 31L/R: 5000

(CONTINUED ON FOLLOWING PAGE)



NOTE: Chart not to scale.

SC-2, 22 FEB 2024 to 21 MAR 2024

SC-2, 22 FEB 2024 to 21 MAR 2024

# TEXOMA FIVE DEPARTURE

# TEXOMA FIVE DEPARTURE



## DEPARTURE ROUTE DESCRIPTION

TAKEOFF RUNWAYS 31L/R: Climb on assigned heading, maintain 5000 thence. . . .

TAKEOFF RUNWAYS 13L/R, 17L, 35R: Climb on assigned heading, maintain 10000, thence. . . .

TAKEOFF RUNWAYS 17C/R: Climb on heading 160°, maintain 10000, thence. . . .

TAKEOFF RUNWAYS 18L/R: Climb on heading 190°, maintain 10000, thence. . . .

TAKEOFF RUNWAYS 35L/C: Climb on heading 010°, maintain 10000, thence. . . .

TAKEOFF RUNWAYS 36L/R: Climb on heading 340°, maintain 10000, thence. . . .

. . . for RADAR vectors to appropriate route and expect filed altitude 10 minutes after departure.

ARDMORE TRANSITION (TEX5.ADM): From over FUZ VORTAC on FUZ R-348 to LOWGN, then on ADM R-179 to ADM VORTAC.

BLECO TRANSITION (TEX5.BLECO): From over FUZ VORTAC on FUZ R-360 to BLECO.

DECKK TRANSITION (TEX5.DECKK): From over FUZ VORTAC on FUZ R-360 to NOOGY, then on IRW R-144 to DECKK.

EAKER TRANSITION (TEX5.EAKER): From over FUZ VORTAC on FUZ R-012 to EAKER.

GRABE TRANSITION (TEX5.GRABE): From over FUZ VORTAC on FUZ R-012 to GRABE.

OKMULGEE TRANSITION (TEX5.OKM): From over FUZ VORTAC on FUZ R-012 to EAKER, then on OKM R-196 to OKM VOR/DME.

ROLLS TRANSITION (TEX5.ROLLS): From over FUZ VORTAC on FUZ R-348 to LOWGN, then on ADM R-179 to ADM VORTAC, then on ADM R-303 to ROLLS.

TULSA TRANSITION (TEX5.TUL): From over FUZ VORTAC on FUZ R-360 to ZEMMA, then on TUL R-201 to TUL VORTAC.

WILL ROGERS TRANSITION (TEX5.IRW): From over FUZ VORTAC on FUZ R-360 to ZEMMA, then on IRW R-145 to IRW VORTAC.

ZEMMA TRANSITION (TEX5.ZEMMA): From over FUZ VORTAC on FUZ R-360 to ZEMMA.

NOTE: BLECO Transition: ATC assigned.

NOTE: DECKK Transition: For all aircraft inbound to the Oklahoma City area.

NOTE: EAKER Transition: For aircraft inbound to the Tulsa terminal area.

NOTE: GRABE Transition: ATC assigned.

NOTE: OKMULGEE Transition: For all aircraft overflying OKM VOR/DME proceeding on J181 to BDF to destinations in the Chicago terminal area and north.

NOTE: TULSA Transition: For all aircraft overflying TUL VORTAC.


NOTE: WILL ROGERS Transition: For all aircraft overflying IRW VORTAC.

SC-2, 22 FEB 2024 to 21 MAR 2024

SC-2, 22 FEB 2024 to 21 MAR 2024

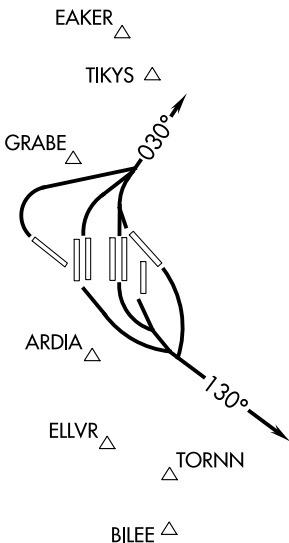
# TRI-GATE FOUR DEPARTURE


D-ATIS DEP  
 135.925  
 CLNC DEL  
 128.25  
 CPDLC  
 GND CON  
 121.65 121.8 (EAST)  
 121.85 (WEST)  
 DFW TOWER  
 126.55 127.5 (EAST)  
 124.15 134.9 (WEST)  
 REGIONAL DEP CON  
 124.3 282.275 (NORTH)  
 125.2 343.65 (SOUTH)

OKMULGEE  
 114.9 OKM   
 Chan 96

**TOP ALTITUDE:  
 2000**

- NOTE: RADAR required.
- NOTE: For non-Turbojet aircraft only.
- NOTE: ARDIA and GRABE TRANSITIONS: ATC assigned.



NAVASOTA  
 115.9 TNV   
 Chan 106

### TAKEOFF MINIMUMS

Rwy 35R: NA-ATC.

Rwys 13L/R, 17L/C/R, 18L/R, 31L/R, 35L/C, 36L/R: Standard.

NOTE: Chart not to scale.



### DEPARTURE ROUTE DESCRIPTION

TAKEOFF RUNWAYS 13L/R, 17L/C/R, 18L/R: Climb on heading 130° for RADAR vectors to appropriate fix, thence. . . .

TAKEOFF RUNWAYS 31L/R, 35L/C, 36L/R: Climb on heading 030° for RADAR vectors to appropriate fix, thence. . . .

. . . .maintain 2000 or as assigned by ATC, expect filed altitude 10 minutes after departure.

TRYTN FOUR DEPARTURE (RNAV)  
(TRYTN4, TRYTN) 08SEP22

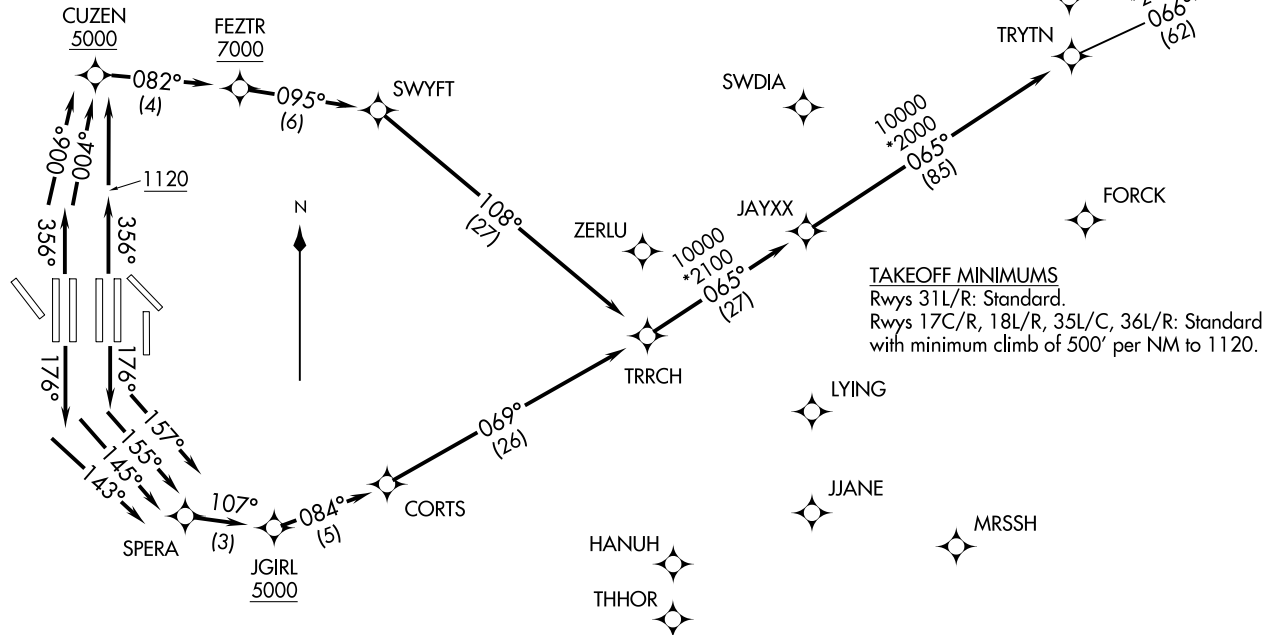
DALLAS-FORT WORTH, TEXAS  
DALLAS-FORT WORTH INTL (DFW)

D-ATIS DEP  
135.925  
CLNC DEL  
128.25  
CPDLC  
GND CON  
121.65 121.8 (EAST)  
121.85 (WEST)  
DFW TOWER  
126.55 127.5 (EAST)  
124.15 134.9 (WEST)  
REGIONAL DEP CON  
118.55 290.35

RNAV 1 - DME/DME/IRU or GPS.  
RADAR required.

**TOP ALTITUDE:**  
**RWYS 31L/R: 5000**  
**RWYS 17C/R, 18L/R,**  
**35L/C, 36L/R: 10000**

NOTE: For use by turbojet aircraft only.  
NOTE: Non-RNAV capable props: file and expect DALLAS or GARLAND DEPARTURE.  
NOTE: RNAV capable props: file and expect the KUSSO RNAV DEPARTURE.



**TAKEOFF MINIMUMS**  
Rwys 31L/R: Standard.  
Rwys 17C/R, 18L/R, 35L/C, 36L/R: Standard  
with minimum climb of 500' per NM to 1120.

NOTE: Chart not to scale.

(NARRATIVE ON FOLLOWING PAGE)

(TRYTN4, TRYTN) 23334  
TRYTN FOUR DEPARTURE (RNAV)

AL-6039 (FAA)  
DALLAS-FORT WORTH INTL (DFW)  
DALLAS-FORT WORTH, TEXAS



DEPARTURE ROUTE DESCRIPTION

TAKEOFF RWY 17C: Climb on heading 176° to intercept course 157° to SPERA, then on track 107° to cross JGIRL at or above 5000, then on track 084° to CORTS, then on track 069° to TRRCH, thence. . . .

TAKEOFF RWY 17R: Climb on heading 176° to intercept course 155° to SPERA, then on track 107° to cross JGIRL at or above 5000, then on track 084° to CORTS, then on track 069° to TRRCH, thence. . . .

TAKEOFF RWY 18L: Climb on heading 176° to intercept course 145° to SPERA, then on track 107° to cross JGIRL at or above 5000, then on track 084° to CORTS, then on track 069° to TRRCH, thence. . . .

TAKEOFF RWY 18R: Climb on heading 176° to intercept course 143° to SPERA, then on track 107° to cross JGIRL at or above 5000, then on track 084° to CORTS, then on track 069° to TRRCH, thence. . . .

TAKEOFF RWYS 35L/C: Climb on heading 356° to 1120, then direct to cross CUZEN at or above 5000, then on track 082° to cross FEZTR at or above 7000, then on track 095° to SWYFT, then on track 108° to TRRCH, thence. . . .

TAKEOFF RWY 36L: Climb on heading 356° to intercept course 006° to cross CUZEN at or above 5000, then on track 082° to cross FEZTR at or above 7000, then on track 095° to SWYFT, then on track 108° to TRRCH, thence. . . .

TAKEOFF RWY 36R: Climb on heading 356° to intercept course 004° to cross CUZEN at or above 5000, then on track 082° to cross FEZTR at or above 7000, then on track 095° to SWYFT, then on track 108° to TRRCH, thence. . . .

. . . on track 065° to JAYXX, then on track 065° to TRYTN, then on (transition) maintain 10000. Expect filed altitude 10 minutes after departure.

TAKEOFF RWYS 31L/R: Climb on heading assigned by ATC, expect RADAR vectors to TRRCH, thence. . . .

. . . on track 065° to JAYXX, then on track 065° to TRYTN, then on (transition) maintain 5000. Expect filed altitude 10 minutes after departure.

LOOSE TRANSITION (TRYTN4.LOOSE)

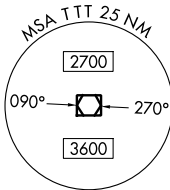
SC-2, 22 FEB 2024 to 21 MAR 2024

SC-2, 22 FEB 2024 to 21 MAR 2024

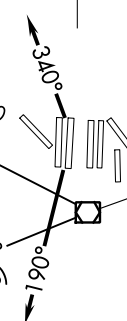
RADAR and DME required.

**TOP ALTITUDE:**  
**RWYS 13L/R, 17L/C/R,**  
**18L/R, 35L/C/R,**  
**36L/R: 10000**  
**RWYS 31L/R: 5000**

REGIONAL DEP CON  
126.475 363.15  
D-ATIS DEP  
135.925  
CLNC DEL  
128.25  
CPDLC  
GND CON  
121.65 121.8 (EAST)  
121.85 (WEST)  
DFW TOWER  
126.55 127.5 (EAST)  
124.15 134.9 (WEST)



**MAVERICK**  
113.1 TTT  
Chan 78



NOTE: PODDE Transition: ATC assigned.  
NOTE: Maintain 240K until leaving 5000.  
NOTE: PROPS: Expect COYOTE or KINGDOM DEPARTURE.

(CONTINUE ON FOLLOWING PAGE)

**PANHANDLE**  
116.6 PNH  
Chan 113

**CHILDRESS**  
117.0 CDS  
Chan 117

**WICHITA FALLS**  
112.7 SPS  
Chan 74

**TEXICO**  
112.2 TXO  
Chan 59

**SCABI**

**LUBBOCK**  
109.2 LBB  
Chan 29

**CORONA**  
115.5 CNX  
Chan 102

**FL180**  
272°  
\*9300 (192)

**ABILENE**  
113.7 ABI  
Chan 84

**MILLSAP**  
117.7 MQP  
Chan 124

**TAKEOFF MINIMUMS**

Rwys 13L/R, 17L/C/R, 18L/R, 31L/R, 35L/C, 36L/R: Standard.  
Rwy 35R: Standard with minimum climb of 245'/NM to 1200.

NOTE: Chart not to scale.

(WORTH1.TTT) 24025  
**WORTH ONE DEPARTURE**

AL-6039 (FAA)

**DALLAS-FORT WORTH INTL (DFW)**  
DALLAS-FORT WORTH, TEXAS

**WORTH ONE DEPARTURE**  
(WORTH1.TTT) 251AN24

**DALLAS-FORT WORTH, TEXAS**  
DALLAS-FORT WORTH INTL (DFW)

# WORTH ONE DEPARTURE



## DEPARTURE ROUTE DESCRIPTION

TAKEOFF RUNWAYS 13L/R, 17L/C/R, 35L/C/R: Climb on assigned heading thence. . . .

TAKEOFF RUNWAYS 18L/R: Climb on heading 190°, thence. . . .

TAKEOFF RUNWAYS 36L/R: Climb on heading 340°, thence. . . .

. . . .for RADAR vectors to appropriate route, maintain 10000 and expect filed altitude 10 minutes after departure.

TAKEOFF RUNWAYS 31L/R: Climb on assigned heading and altitude, thence. . . .

. . . .for RADAR vectors to appropriate route, maintain 5000 and expect filed altitude 10 minutes after departure.

ABILENE TRANSITION (WORTH1.ABI): From over TTT VOR/DME on TTT R-250 to PODDE, then on MQP R-081 to MQP VORTAC, then on MQP R-253 and ABI R-071 to ABI VORTAC.

CHILDRESS TRANSITION (WORTH1.CDS): From over TTT VOR/DME on TTT R-285 to SCABI, then on CDS R-127 to CDS VORTAC.

CORONA TRANSITION (WORTH1.CNX): From over TTT VOR/DME on TTT R-250 to PODDE, then on MQP R-081 to MQP VORTAC, then on MQP R-253 and ABI R-071 to ABI VORTAC, then on ABI R-296 and LBB R-114 to LBB VORTAC, then on LBB R-272 and CNX R-088 to CNX VORTAC.

LUBBOCK TRANSITION (WORTH1.LBB): From over TTT VOR/DME on TTT R-250 to PODDE, then on MQP R-081 to MQP VORTAC, then on MQP R-253 and ABI R-071 to ABI VORTAC, then on ABI R-296 and LBB R-114 to LBB VORTAC.

PANHANDLE TRANSITION (WORTH1.PNH): From over TTT VOR/DME on TTT R-285 to SCABI, then on CDS R-127 to CDS VORTAC, then on CDS R-297 and PNH R-118 to PNH VORTAC.

PODDE TRANSITION (WORTH1.PODDE): From over TTT VOR/DME on TTT R-250 to PODDE.

TEXICO TRANSITION (WORTH1.TXO): From over TTT VOR/DME on TTT R-250 to PODDE, then on MQP R-081 to MQP VORTAC, then on MQP R-253 and ABI R-071 to ABI VORTAC, then on ABI R-296 and LBB R-114 to LBB VORTAC, then on LBB R-305 and TXO R-124 to TXO VORTAC.

SC-2, 22 FEB 2024 to 21 MAR 2024

SC-2, 22 FEB 2024 to 21 MAR 2024

# WORTH ONE DEPARTURE

WSTEX TWO DEPARTURE (RNAV) (WSTEX2.WSTEX) 04FEB16 DALLAS-FORT WORTH INTL (DFW)

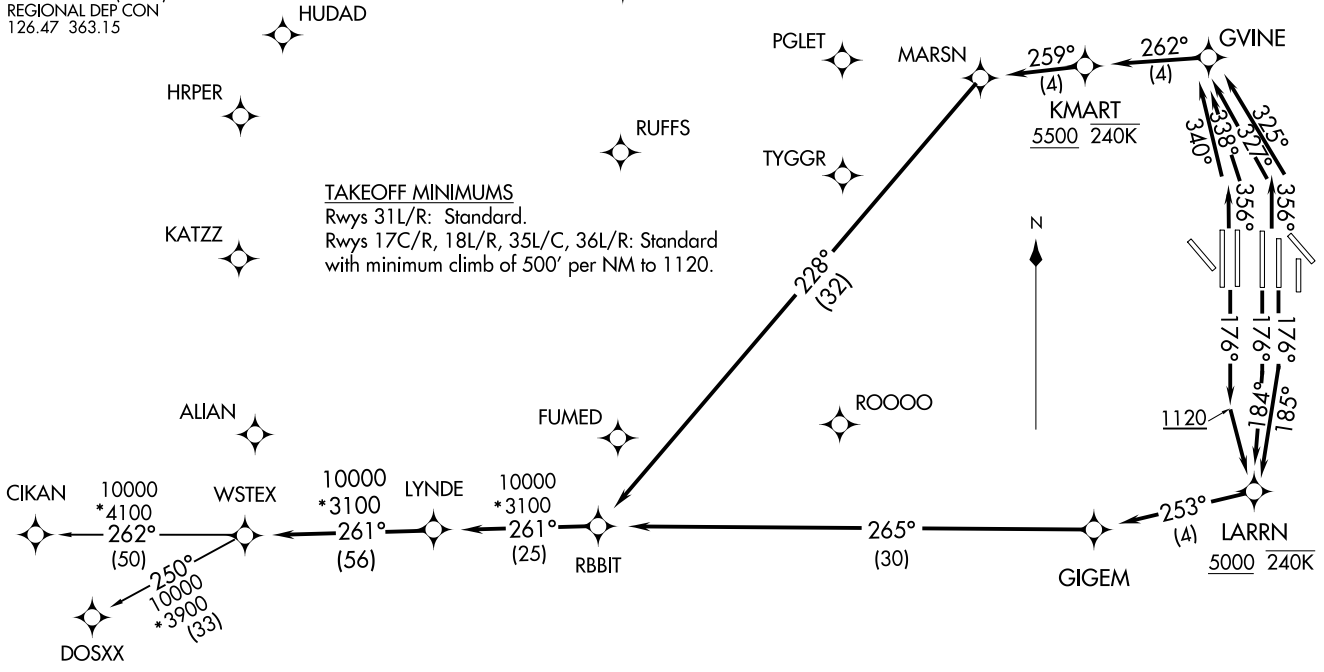
WSTEX TWO DEPARTURE (RNAV) (WSTEX2.WSTEX) 23334 AL-6039 (FAA) DALLAS-FORT WORTH INTL (DFW) DALLAS-FORT WORTH, TEXAS

D-ATIS DEP  
135.925  
CLNC DEL  
128.25  
CPDLC  
GND CON  
121.65 121.8 (EAST)  
121.85 (WEST)  
DFW TOWER  
126.55 127.5 (EAST)  
124.15 134.9 (WEST)  
REGIONAL DEP CON  
126.47 363.15

**TOP ALTITUDE:**  
**RWY 17C/R, 18L/R,**  
**35C/L, 36L/R: 10000**  
**RWY 31L/R: 5000**

NOTE: DME/DME/IRU or GPS required.  
NOTE: RNAV 1.  
NOTE: For use by turbojets only.  
NOTE: RNAV capable props: File and expect the SWABR RNAV SID.  
NOTE: Non-RNAV capable props: File and expect KINGDOM or COYOTE DEPARTURE.  
NOTE: RADAR required.

TAKEOFF MINIMUMS  
Rwys 31L/R: Standard.  
Rwys 17C/R, 18L/R, 35L/C, 36L/R: Standard  
with minimum climb of 500' per NM to 1120.



(NARRATIVE ON FOLLOWING PAGE)

NOTE: Chart not to scale



# WSTEX TWO DEPARTURE (RNAV)



## DEPARTURE ROUTE DESCRIPTION

TAKEOFF RUNWAY 17C: Climb heading 176° to intercept course 185° to cross LARRN at or above 5000, then on track 253° to GIGEM, then on track 265° to RBBIT, thence . . . .

TAKEOFF RUNWAYS 17R: Climb heading 176° to intercept course 184° to cross LARRN at or above 5000, then on track 253° to GIGEM, then on track 265° to RBBIT, thence . . . .

TAKEOFF RUNWAYS 18L/R: Climb heading 176° to 1120, then direct to cross LARRN at or above 5000, then on track 253° to GIGEM, then on track 265° to RBBIT, thence . . . .

TAKEOFF RUNWAY 35C: Climb heading 356° to intercept course 325° to GVINE, then on track 262° to cross KMART at or above 5500, then on track 259° to MARSN, then on track 228° to RBBIT, thence . . . .

TAKEOFF RUNWAY 35L: Climb heading 356° to intercept course 327° to GVINE, then on track 262° to cross KMART at or above 5500, then on track 259° to MARSN, then on track 228° to RBBIT, thence . . . .

TAKEOFF RUNWAY 36L: Climb heading 356° to intercept course 340° to GVINE, then on course 262° to cross KMART at or above 5500, then on track 259° to MARSN, then on track 228° to RBBIT, thence . . . .

TAKEOFF RUNWAY 36R: Climb heading 356° to intercept course 338° to GVINE, then on course 262° to cross KMART at or above 5500, then on track 259° to MARSN, then on track 228° to RBBIT, thence . . . .

. . . . on track 261° to LYNDE, then on track 261° to WSTEX, then on (transition).  
Maintain 10000, expect filed altitude ten minutes after departure.

TAKEOFF RUNWAYS 31L/R: Climb heading assigned by ATC, expect RADAR vectors to RBBIT, thence . . . .

. . . . on track 261° to LYNDE, then on track 261° to WSTEX, then on (transition).  
Maintain 5000, expect filed altitude ten minutes after departure.

CIKAN TRANSITION (WSTEX2.CIKAN)

DOSXX TRANSITION (WSTEX2.DOSXX)

SC-2, 22 FEB 2024 to 21 MAR 2024

SC-2, 22 FEB 2024 to 21 MAR 2024

ZACHH FOUR DEPARTURE (RNAV)  
(ZACHH4, ZACHH) 08SEP22

DALLAS-FORT WORTH, TEXAS  
DALLAS-FORT WORTH INTL (DFW)

D-ATIS DEP  
135.925  
CLNC DEL  
128.25  
CPDLC  
GND CON  
121.65 121.8 (EAST)  
121.85 (WEST)  
DFW TOWER  
126.55 127.5 (EAST)  
124.15 134.9 (WEST)  
REGIONAL DEP CON  
118.55 290.35

RNAV 1 - DME/DME/IRU or GPS.

RADAR required.

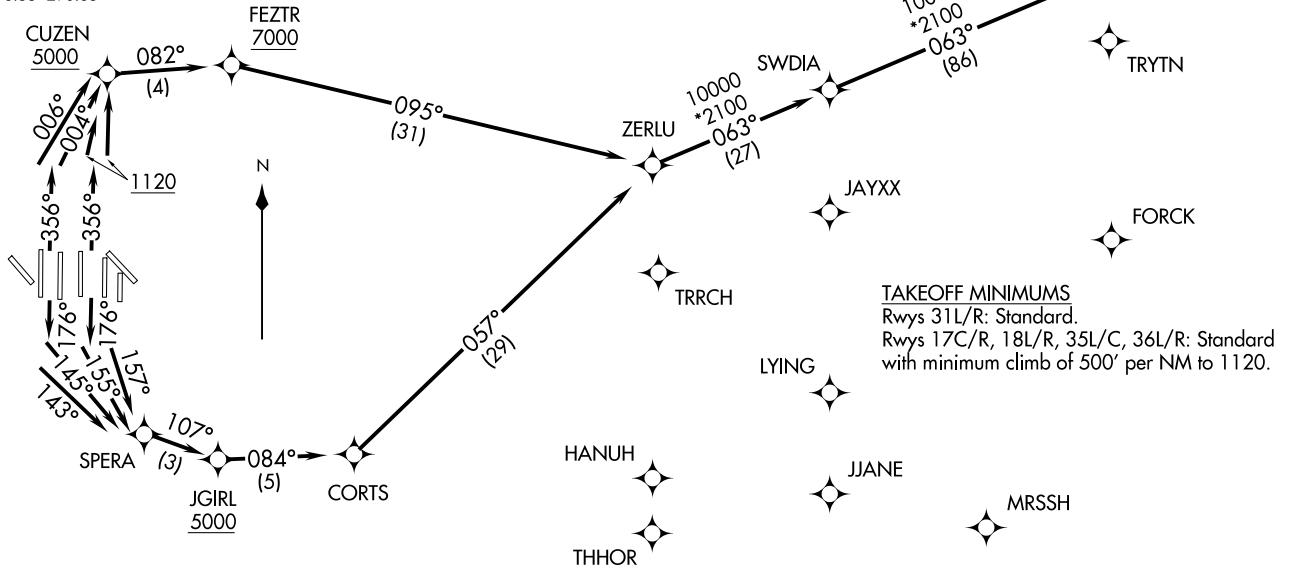
**TOP ALTITUDE:**  
**RWYS 31L/R: 5000**  
**RWYS 17C/R, 18L/R,**  
**35L/C, 36L/R: 10000**

NOTE: For use by turbojet aircraft only.  
NOTE: Non-RNAV capable props: file and expect DALLAS or GARLAND DEPARTURE.  
NOTE: RNAV capable props: file and expect the SWABR RNAV SID.

(ZACHH4, ZACHH) 23334  
ZACHH FOUR DEPARTURE (RNAV)

AL-6039 (FAA)

DALLAS-FORT WORTH INTL (DFW)  
DALLAS-FORT WORTH, TEXAS



NOTE: Chart not to scale.

(NARRATIVE ON FOLLOWING PAGE)



DEPARTURE ROUTE DESCRIPTION

TAKEOFF RWY 17C: Climb on heading 176° to intercept course 157° to SPERA, then on track 107° to cross JGIRL at or above 5000, then on track 084° to CORTS, then on track 057° to ZERLU, thence. . . .

TAKEOFF RWY 17R: Climb on heading 176° to intercept course 155° to SPERA, then on track 107° to cross JGIRL at or above 5000, then on track 084° to CORTS, then on track 057° to ZERLU, thence. . . .

TAKEOFF RWY 18L: Climb on heading 176° to intercept course 145° to SPERA, then on track 107° to cross JGIRL at or above 5000, then on track 084° to CORTS, then on track 057° to ZERLU, thence. . . .

TAKEOFF RWY 18R: Climb on heading 176° to intercept course 143° to SPERA, then on track 107° to cross JGIRL at or above 5000, then on track 084° to CORTS, then on track 057° to ZERLU, thence. . . .

TAKEOFF RWYS 35C/L: Climb on heading 356° to 1120, then direct to cross CUZEN at or above 5000, then on track 082° to cross FEZTR at or above 7000, then on track 095° to ZERLU, thence. . . .

TAKEOFF RWY 36L: Climb on heading 356° to intercept course 006° to cross CUZEN at or above 5000, then on track 082° to cross FEZTR at or above 7000, then on track 095° to ZERLU, thence. . . .

TAKEOFF RWY 36R: Climb on heading 356° to intercept course 004° to cross CUZEN at or above 5000, then on track 082° to cross FEZTR at or above 7000, then on track 095° to ZERLU, thence. . . .

. . . .on track 063° to SWDIA, then on track 063° to ZACHH, then on (transition) maintain 10000. Expect filed altitude 10 minutes after departure.

TAKEOFF RWYS 31L/R: Climb on heading assigned by ATC for RADAR vectors to ZERLU, thence. . . .

. . . .on track 063° to SWDIA, then on track 063° to ZACHH, then on (transition) maintain 5000. Expect filed altitude 10 minutes after departure.

BSKAT TRANSITION (ZACHH4.BSKAT)

SC-2, 22 FEB 2024 to 21 MAR 2024

SC-2, 22 FEB 2024 to 21 MAR 2024