

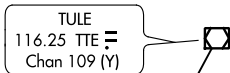
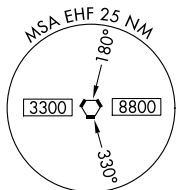


VORTAC EHF <b>115.4</b> Chan <b>101</b>	APP CRS <b>322°</b>	Rwy Idg TDZE <b>315</b> Apt Elev <b>316</b>	<b>5659</b> <b>315</b> <b>316</b>
---	------------------------	---	---

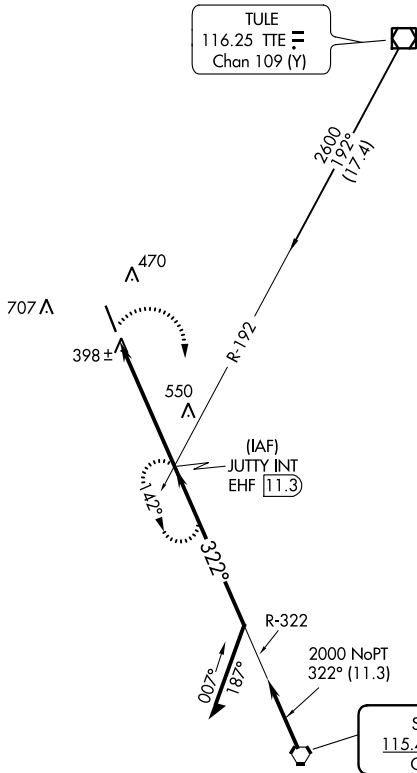
**VOR RWY 32**  
DELANO MUNI (DLO)

<p><b>▽</b> NA Circling NA southwest of Rwy 14-32.</p>	<p>MISSED APPROACH: Climbing right turn to 2000 via EHF R-322 to JUTTY INT and hold.</p>
--	--

AWOS-3P <b>119.55</b>	BAKERSFIELD APP CON* <b>118.9</b>	UNICOM <b>122.8 (CTAF)</b>
--------------------------	--------------------------------------	-------------------------------



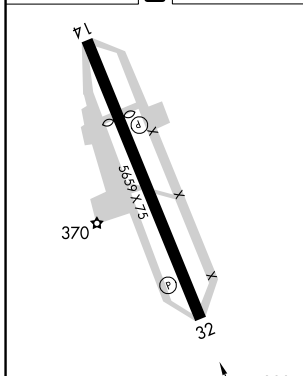
2412



SW-3, 22 FEB 2024 to 21 MAR 2024

SW-3, 22 FEB 2024 to 21 MAR 2024

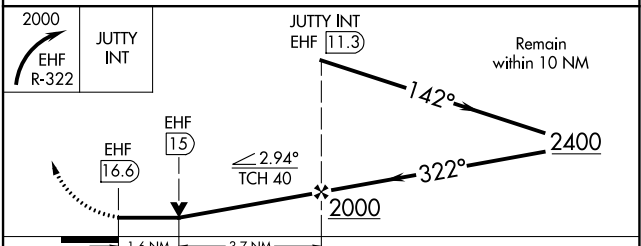
ELEV 316	<b>D</b>	TDZE 315
----------	----------	----------



MIRL Rwy 14-32  
REIL Rwys 14 and 32

FAF to MAP 5.3 NM

Knots	60	90	120	150	180
Min:Sec	5:18	3:32	2:39	2:07	1:46



CATEGORY	A	B	C	D
S-32	860-1 545 (600-1)		860-1½ 545 (600-1½)	860-1¾ 545 (600-1¾)
CIRCLING	860-1 544 (600-1)		860-1½ 544 (600-1½)	940-2 624 (700-2)