

(CONLE4.CONLE) 21140

AL-5533 (FAA)

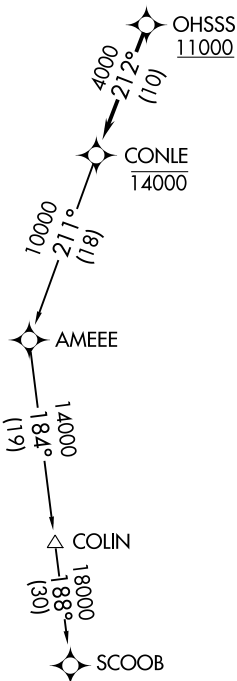
CARROLL COUNTY RGNL/JACK B POAGE FLD(DMW)

WESTMINSTER, MARYLAND

CONLE FOUR DEPARTURE (RNAV)

AWOS-3
121.25
UNICOM
122.7 (CTAF)
POTOMAC DEP CON
125.525 291.625

**TOP ALTITUDE:
ASSIGNED BY ATC**



- NOTE: RNAV 1.
- NOTE: DME/DME/IRU or GPS required.
- NOTE: RADAR required.
- NOTE: For turbojet aircraft only.

TAKEOFF MINIMUMS:

- Rwy 16: 400-2¾ or standard with minimum climb of 225' per NM to 1400.
- Rwy 34: Standard.

NOTE: Chart not to scale.

DEPARTURE ROUTE DESCRIPTION

Climb on assigned heading to ATC assigned altitude, for vectors to cross OHSSS at or above 11000, then on track 212° to cross CONLE at or below 14000, then on assigned transition. Expect filed altitude within 10 minutes after departure.

COLIN TRANSITION (CONLE4.COLIN)

SCOOB TRANSITION (CONLE4.SCOOB)

CONLE FOUR DEPARTURE (RNAV)

WESTMINSTER, MARYLAND

(CONLE4.CONLE) 31DEC20

CARROLL COUNTY RGNL/JACK B POAGE FLD (DMW)

NE-3, 22 FEB 2024 to 21 MAR 2024

NE-3, 22 FEB 2024 to 21 MAR 2024

(TERPZ7.TERPZ) 21140

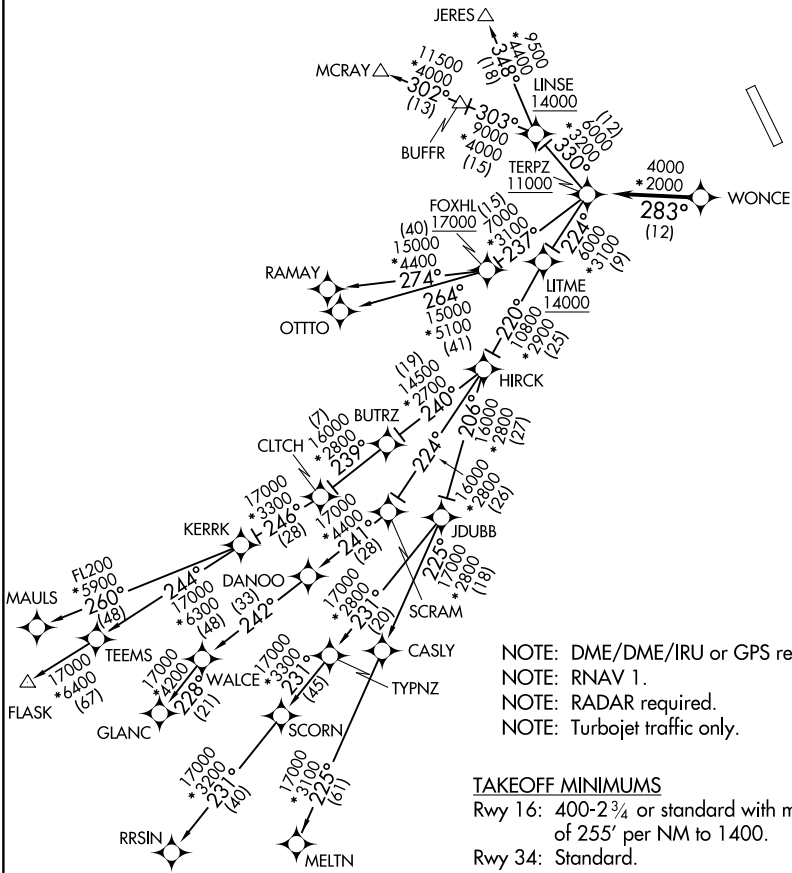
AL-5533 (FAA)

CARROLL COUNTY RGNL/JACK B POAGE FLD(DMW)
WESTMINSTER, MARYLAND

TERPZ SEVEN DEPARTURE (RNAV)

AWOS-3
121.25
UNICOM
122.7 (CTAF)
POTOMAC DEP CON
125.525 291.625

TOP ALTITUDE:
RAMAY, OTTTO, MAULS, FLASK,
RRSIN, GLANC, MELTN
TRANSITIONS: 17000
JERES, MCRAY TRANSITIONS:
16000



NOTE: DME/DME/IRU or GPS required.
NOTE: RNAV 1.
NOTE: RADAR required.
NOTE: Turbojet traffic only.

TAKEOFF MINIMUMS

Rwy 16: 400-2¾ or standard with minimum climb of 255' per NM to 1400.
Rwy 34: Standard.

NOTE: Chart not to scale.

TERPZ SEVEN DEPARTURE (RNAV)

CARROLL COUNTY RGNL/JACK B POAGE FLD(DMW)
WESTMINSTER, MARYLAND

(TERPZ7.TERPZ) 26MAR20

NE-3, 22 FEB 2024 to 21 MAR 2024

NE-3, 22 FEB 2024 to 21 MAR 2024



DEPARTURE ROUTE DESCRIPTION

Fly heading and maintain altitude assigned by ATC, expect RADAR vectors to WONCE, then on track 283° to cross TERPZ at or above 11000, thence....

....on assigned transition: Departures on JERES and MCRAJ transitions maintain 16000. Departures on RAMAY, OTTO, MAULS, FLASK, MELTN, RRSIN, GLANC transitions maintain 17000, expect further clearance to filed altitude within 10 minutes after departure.

FLASK TRANSITION (TERPZ7.FLASK)

GLANC TRANSITION (TERPZ7.GLANC)

JERES TRANSITION (TERPZ7.JERES)

MAULS TRANSITION (TERPZ7.MAULS)

MCRAJ TRANSITION (TERPZ7.MCRAJ)

MELTN TRANSITION (TERPZ7.MELTN)

OTTO TRANSITION (TERPZ7.OTTO)

RAMAY TRANSITION (TERPZ7.RAMAY)

RRSIN TRANSITION (TERPZ7.RRSIN)

NE-3, 22 FEB 2024 to 21 MAR 2024

NE-3, 22 FEB 2024 to 21 MAR 2024