

(AZALA4.AZALA) 18200

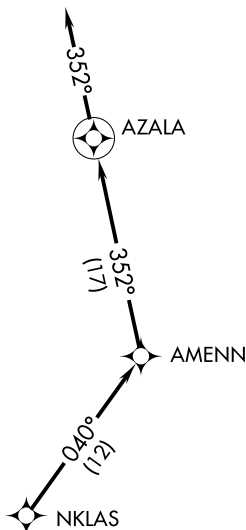
AL-28 (FAA)

DANIEL FIELD (DNL)
AUGUSTA, GEORGIA

AZALA FOUR DEPARTURE (RNAV)

CLNC DEL
121.9
AUGUSTA TOWER ★
118.7 (CTAF) 239.3
AUGUSTA DEP CON ★
126.8 270.3
CTAF
123.05

**TOP ALTITUDE:
ASSIGNED BY ATC**



TAKEOFF MINIMUMS

Rwy 5, 11: Standard.

Rwy 23: Standard with minimum climb of 337' per NM to 1300.

Rwy 29: Standard with minimum climb of 240' per NM to 1300.

NOTE: RADAR and GPS required.

NOTE: RNAV 1.

NOTE: Do not exceed 250K until advised by ATC.

NOTE: For prop aircraft during Masters golf tournament week only.

NOTE: Chart not to scale.



DEPARTURE ROUTE DESCRIPTION

TAKEOFF RWY 5, 11, 23, 29: Climb on assigned heading for RADAR vectors to NKLAS. Then on depicted route to AZALA, then fly heading 352°, for RADAR vectors, thence . . .

. . . maintain altitude assigned by ATC. Expect clearance to filed altitude/flight level within 10 minutes after departure.

AZALA FOUR DEPARTURE (RNAV)

(AZALA4.AZALA) 19JUL18

AUGUSTA, GEORGIA
DANIEL FIELD (DNL)

SE-4, 25 FEB 2021 to 25 MAR 2021

SE-4, 25 FEB 2021 to 25 MAR 2021

(CHATT6.CHATT) 18088

AL-28 (FAA)

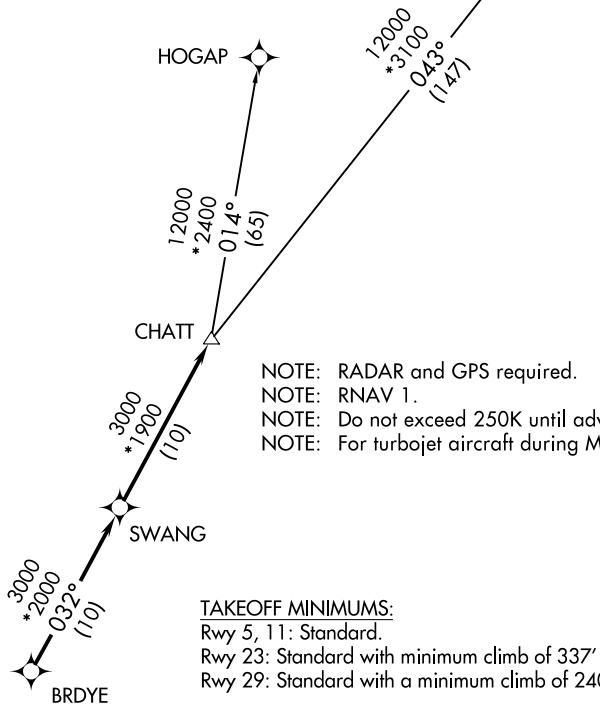
DANIEL FIELD (DNL)
AUGUSTA, GEORGIA

CHATT SIX DEPARTURE (RNAV)

AUGUSTA DEP CON ★
126.8 270.3
CTAF
123.05
ASOS
135.275

GREENSBORO
GSO

**TOP ALTITUDE:
ASSIGNED BY ATC**



- NOTE: RADAR and GPS required.
- NOTE: RNAV 1.
- NOTE: Do not exceed 250K until advised by ATC.
- NOTE: For turbojet aircraft during Masters golf tournament week.

TAKEOFF MINIMUMS:

- Rwy 5, 11: Standard.
- Rwy 23: Standard with minimum climb of 337' per NM to 1300.
- Rwy 29: Standard with a minimum climb of 240' per NM to 1300.

NOTE: Chart not to scale.

DEPARTURE ROUTE DESCRIPTION

TAKEOFF RWY 5, 11, 23, 29: Climb on assigned heading for RADAR vectors to BRDYE, then on depicted route to CHATT, thence

. . . . Maintain altitude assigned by ATC. Expect clearance to filed altitude/flight level within 10 minutes after departure.

- GREENSBORO TRANSITION (CHATT6.GSO):
- HOGAP TRANSITION (CHATT6.HOGAP):

CHATT SIX DEPARTURE (RNAV)

(CHATT6.CHATT) 29MAR18

AUGUSTA, GEORGIA
DANIEL FIELD (DNL)

SE-4, 25 FEB 2021 to 25 MAR 2021

SE-4, 25 FEB 2021 to 25 MAR 2021

(MISTY6.HADOC) 18200

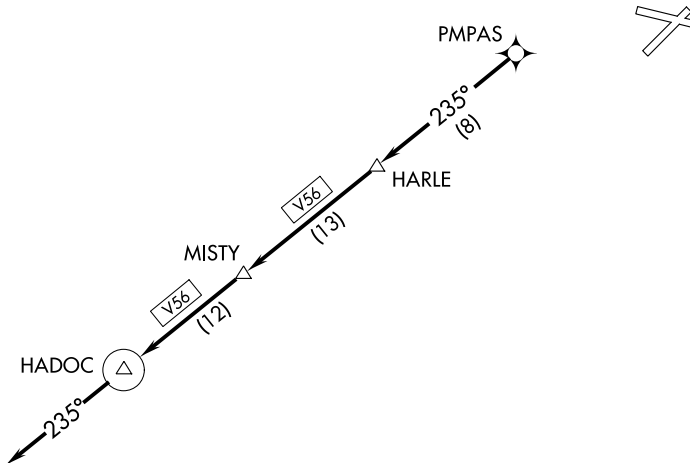
AL-28 (FAA)

DANIEL FIELD (DNL)
AUGUSTA, GEORGIA

MISTY SIX DEPARTURE (RNAV)

CLNC DEL
121.9
AUGUSTA DEP CON ★
126.8 270.3
CTAF
123.05

**TOP ALTITUDE:
ASSIGNED BY ATC**



TAKEOFF MINIMUMS

Rwy 5, 11: Standard.

Rwy 23: Standard with minimum climb of 337' per NM to 1300.

Rwy 29: Standard with minimum climb of 240' per NM to 1300.

NOTE: RADAR and GPS required.

NOTE: RNAV 1.

NOTE: Do not exceed 250K until advised by ATC.

NOTE: For turbojet aircraft only.

NOTE: For use during Masters golf tournament week only.

NOTE: Chart not to scale.



DEPARTURE ROUTE DESCRIPTION

TAKEOFF RWYS 5, 11, 23, 29: Climb on assigned heading for RADAR vectors to PMPAS. Then on depicted route to HADOC, then fly heading 235°, for RADAR vectors. Thence . . .

. . . maintain altitude assigned by ATC. Expect clearance to filed altitude/flight level within 10 minutes after departure.

MISTY SIX DEPARTURE (RNAV)
(MISTY6.HADOC) 19JUL18

AUGUSTA, GEORGIA
DANIEL FIELD (DNL)

SE-4, 25 FEB 2021 to 25 MAR 2021

SE-4, 25 FEB 2021 to 25 MAR 2021

(NDINA5.NDINA) 18200

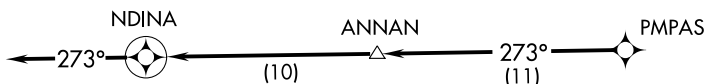
AL-28 (FAA)

DANIEL FIELD (DNL)
AUGUSTA, GEORGIA

NDINA FIVE DEPARTURE (RNAV)

CLNC DEL
121.9
AUGUSTA TOWER ★
118.7 (CTAF) 239.3
AUGUSTA DEP CON ★
126.8 270.3
CTAF
123.05

**TOP ALTITUDE:
ASSIGNED BY ATC**



TAKEOFF MINIMUMS

Rwy 5, 11: Standard.

Rwy 23: Standard with minimum climb of 337' per NM to 1300.

Rwy 29: Standard with minimum climb of 240' per NM to 1300.

NOTE: RADAR and GPS required.

NOTE: RNAV 1.

NOTE: Do not exceed 250K until advised by ATC.

NOTE: For prop aircraft during Masters golf tournament week only.

NOTE: Chart not to scale.



DEPARTURE ROUTE DESCRIPTION

TAKEOFF RWYS 5, 11, 23, 29: Climb on assigned heading for RADAR vectors to PMPAS. Then on depicted route to NDINA. Then fly heading 273°, for RADAR vectors, thence . . .

. . . maintain altitude assigned by ATC. Expect clearance to filed altitude/flight level within 10 minutes after departure.

NDINA FIVE DEPARTURE (RNAV)

(NDINA5.NDINA) 19JUL18

AUGUSTA, GEORGIA
DANIEL FIELD (DNL)

SE-4, 25 FEB 2021 to 25 MAR 2021

SE-4, 25 FEB 2021 to 25 MAR 2021

(SAMMI4.SAMMI) 18088

AL-28 (FAA)

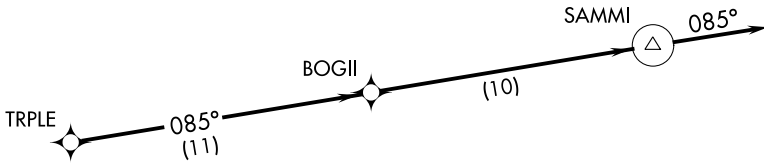
DANIEL FIELD (DNL)
AUGUSTA, GEORGIA

SAMMI FOUR DEPARTURE (RNAV)

AUGUSTA DEP CON ★
126.8 270.3
CTAF
123.05

**TOP ALTITUDE:
ASSIGNED BY ATC**

NOTE: RADAR and GPS required.
NOTE: RNAV 1.
NOTE: Do not exceed 250K until advised by ATC.



TAKEOFF MINIMUMS:

Rwy 5, 11: Standard.
Rwy 23: Standard with minimum climb of 337' per NM to 1300.
Rwy 29: Standard with minimum climb of 240' per NM to 1300.

NOTE: Chart not to scale.

▼ DEPARTURE ROUTE DESCRIPTION

TAKEOFF RWY 5, 11, 23, 29: Climb on assigned heading for RADAR vectors to TRPLE. Then on depicted route to SAMMI. Then on heading 085° for RADAR vectors thence Maintain altitude assigned by ATC. Expect clearance to filed altitude/flight level within 10 minutes after departure.

SAMMI FOUR DEPARTURE (RNAV)
(SAMMI4.SAMMI) 29MAR18

AUGUSTA, GEORGIA
DANIEL FIELD (DNL)

SE-4, 25 FEB 2021 to 25 MAR 2021

SE-4, 25 FEB 2021 to 25 MAR 2021