

ARLIN FOUR ARRIVAL  
(ARLIN,ARLIN4) 27 APR 17

### ARRIVAL ROUTE DESCRIPTION

**BLYTHE TRANSITION (BLH.ARLIN4):** From over BLH VORTAC on BLH R-089 and IWA R-256 to ARLIN INT. Thence. . .

**MOHAK TRANSITION (MOHAK.ARLIN4):** From over MOHAK INT on GBN R-247 and BXK R-215 to HYDRR INT, then on IWA R-256 to ARLIN INT. Thence. . .

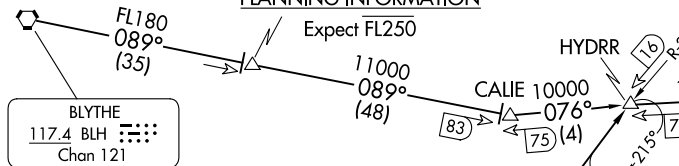
**PHOENIX SKY HARBOR INTL:** Rwy 7L/R or 8: From over ARLIN, Expect vectors to final approach course; Rwy 25L/R or 26: From over ARLIN, on IWA R-256 to TUKEE. Expect vectors to final approach course prior to TUKEE.

**SATELLITE AIRPORTS:** Expect vectors after passing SCOPE or JUDTH.

**LOST COMMUNICATIONS:** After ARLIN, on IWA R-256 and PXR R-143 to PXR VORTAC.

**NOTE:** BLYTHE Transition for turbojet aircraft FL240 and above.  
Turboprop aircraft plan BLYTHE ARRIVAL at or below FL230.  
**NOTE:** MOHAK Transition for turbojet and turboprop aircraft.  
**NOTE:** Turboprops landing KPHX expect vectors after passing SCOPE or JUDTH.

#### SCOPE VERTICAL NAVIGATION PLANNING INFORMATION



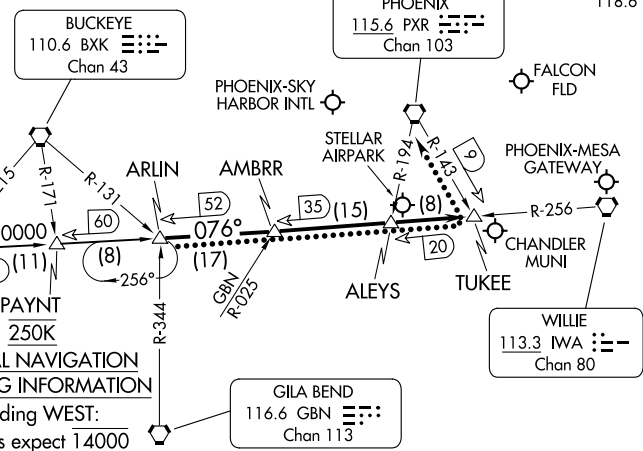
#### MOHAK VERTICAL NAVIGATION PLANNING INFORMATION

Turbojets expect FL250  
Turboprops expect 15000



#### VERTICAL NAVIGATION PLANNING INFORMATION

Landing WEST:  
Turbojets expect 14000  
Landing EAST:  
Turbojets expect 12000



- PHOENIX APP CON 124.1 256.9
- PHOENIX TOWER 118.7 278.8 (Rwy 8-26)
- 120.9 254.3 (Rwy 7L-25R, 7R-25L)
- PHOENIX GND CON 119.75 269.2
- CHD ATIS 128.325
- FFZ ATIS 118.25
- DVT ATIS 126.5
- IWA ATIS★ 133.5 270.275
- PHX D-ATIS 127.575
- SDL ATIS★ 118.6

NOTE: RADAR required  
NOTE: DME required  
NOTE: Chart not to scale.

PHOENIX, ARIZONA

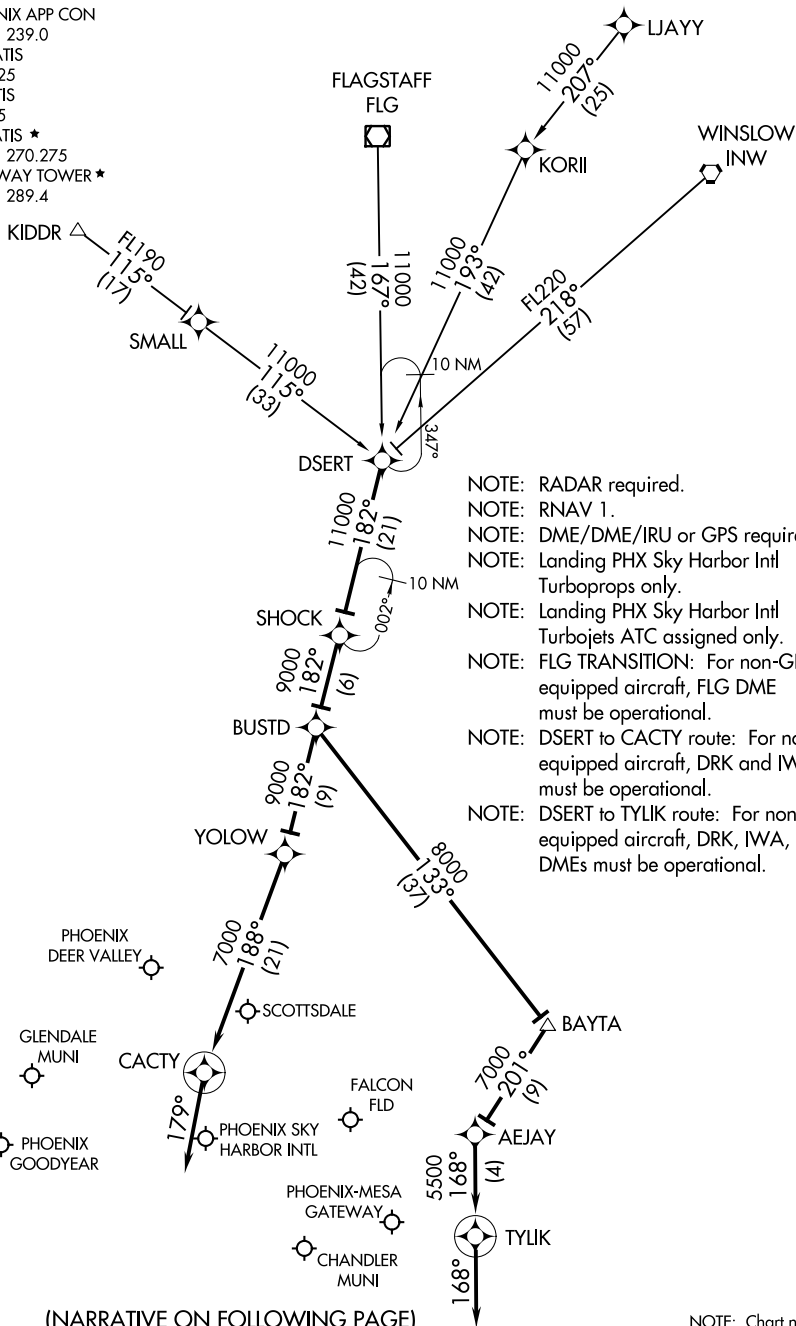
(ARLIN,ARLIN4) 23334  
ARLIN FOUR ARRIVAL

AL-322 (FAA)

PHOENIX, ARIZONA



PHOENIX APP CON  
 120.7 239.0  
 CHD ATIS  
 128.325  
 FFZ ATIS  
 118.25  
 IWA ATIS \*  
 133.5 270.275  
 GATEWAY TOWER \*  
 120.6 289.4



- NOTE: RADAR required.
- NOTE: RNAV 1.
- NOTE: DME/DME/IRU or GPS required.
- NOTE: Landing PHX Sky Harbor Intl Turboprops only.
- NOTE: Landing PHX Sky Harbor Intl Turbojets ATC assigned only.
- NOTE: FLAG TRANSITION: For non-GPS equipped aircraft, FLAG DME must be operational.
- NOTE: DSERT to CACTY route: For non-GPS equipped aircraft, DRK and IWA DMEs must be operational.
- NOTE: DSERT to TYLIK route: For non-GPS equipped aircraft, DRK, IWA, and PXR DMEs must be operational.

(NARRATIVE ON FOLLOWING PAGE)

NOTE: Chart not to scale.

SW-4, 22 FEB 2024 to 21 MAR 2024

SW-4, 22 FEB 2024 to 21 MAR 2024

ARRIVAL ROUTE DESCRIPTION

FLAGSTAFF TRANSITION (FLG.DSERT2)

KIDDR TRANSITION (KIDDR.DSERT2)

LJAYY TRANSITION (LJAYY.DSERT2)

WINSLOW TRANSITION (INW.DSERT2)

From DSERT on track 182° to SHOCK, then on track 182° to BUSTD.

LANDING AT KDVT/KSDL/KGEU/KFFZ/KCHD/KGYR/KPHX:

From BUSTD on track 182° to YOLOW, then on track 188° to CACTY then on track 179°. Expect RADAR vectors.

LANDING AT KIWA: From BUSTD on track 133° to BAYTA, then on track 201° to AEJAY, then on track 168° to TYLIK, then on track 168°. Expect RADAR vectors.

SW-4, 22 FEB 2024 to 21 MAR 2024

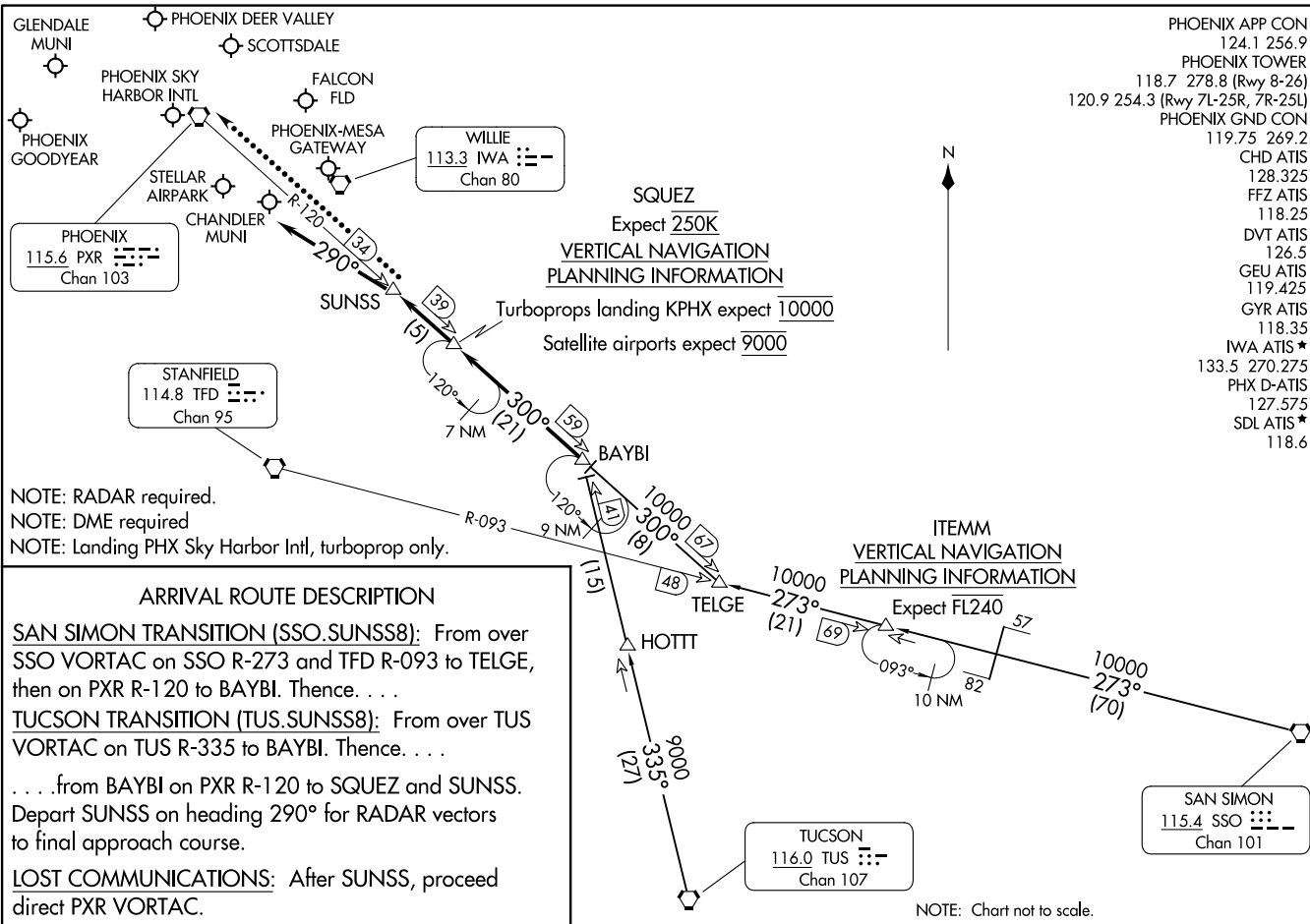
SW-4, 22 FEB 2024 to 21 MAR 2024

SUNSS EIGHT ARRIVAL  
(BAYBI.SUNSS8) 27APR17

(BAYBI.SUNSS8) 23334  
SUNSS EIGHT ARRIVAL

AL-322 (FAA)

PHOENIX, ARIZONA



- PHOENIX APP CON 124.1 256.9  
 PHOENIX TOWER 118.7 278.8 (Rwy 8-26)  
 120.9 254.3 (Rwy 7L-25R, 7R-25L)  
 PHOENIX GND CON 119.75 269.2  
 CHD ATIS 128.325  
 FFZ ATIS 118.25  
 DVT ATIS 126.5  
 GEU ATIS 119.425  
 GYR ATIS 118.35  
 IWA ATIS ★ 133.5 270.275  
 PHX D-ATIS 127.575  
 SDL ATIS ★ 118.6

SQUEZ  
 Expect 250K  
 VERTICAL NAVIGATION  
 PLANNING INFORMATION

ITEMM  
 VERTICAL NAVIGATION  
 PLANNING INFORMATION

ARRIVAL ROUTE DESCRIPTION

**SAN SIMON TRANSITION (SSO.SUNSS8):** From over SSO VORTAC on SSO R-273 and TFD R-093 to TELGE, then on PXR R-120 to BAYBI. Thence. . . .

**TUCSON TRANSITION (TUS.SUNSS8):** From over TUS VORTAC on TUS R-335 to BAYBI. Thence. . . .

. . . from BAYBI on PXR R-120 to SQUEZ and SUNSS. Depart SUNSS on heading 290° for RADAR vectors to final approach course.

**LOST COMMUNICATIONS:** After SUNSS, proceed direct PXR VORTAC.

- NOTE: RADAR required.  
 NOTE: DME required  
 NOTE: Landing PHX Sky Harbor Intl, turboprop only.

PHOENIX, ARIZONA