



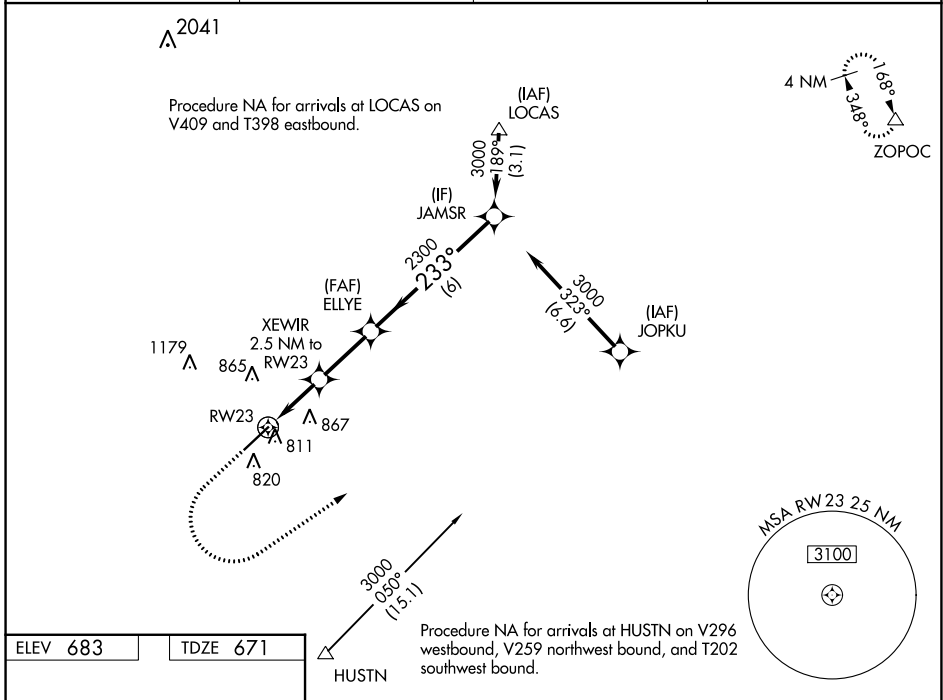
WAAS CH <b>90141</b> <b>W23A</b>	APP CRS <b>233°</b>	Rwy Idg <b>7001</b> TDZE <b>671</b> Apt Elev <b>683</b>
--	------------------------	---

# RNAV (GPS) RWY 23

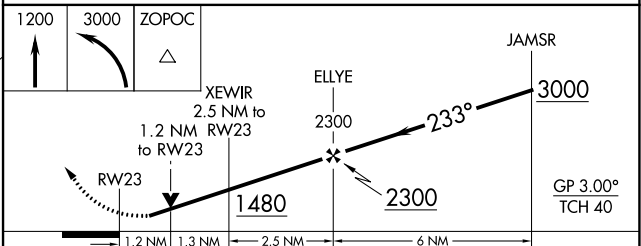
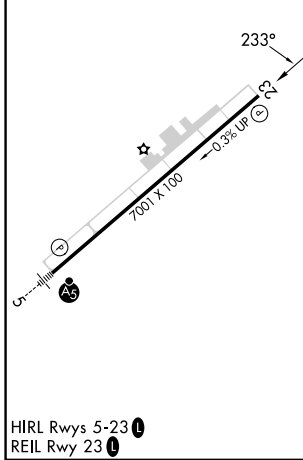
CHARLOTTE/MONROE EXEC (EQY)

RNP APCH-GPS.		MISSED APPROACH: Climb to 1200 then climbing left turn to 3000 direct ZOPOC and hold.	
<b>▽</b>	Rwy 23 helicopter visibility reduction below 3/4 SM NA. For uncompensated Baro-VNAV systems, LNAV/VNAV NA below -7°C or above 54°C.		

ASOS <b>135.775</b>	CHARLOTTE APP CON <b>120.05 307.8</b>	CLNC DEL <b>132.55</b>	UNICOM <b>122.7 (CTAF) 0</b>
------------------------	--	---------------------------	---------------------------------



ELEV <b>683</b>	TDZE <b>671</b>
-----------------	-----------------



CATEGORY	A	B	C	D
LPV DA		939-1	268 (300-1)	
LNAV/VNAV DA		981-1	310 (300-1)	
LNAV MDA	1080-1	409 (400-1)	1080-1½	409 (400-1½)
<b>0</b> CIRCLING	1220-1	537 (600-1)	1220-1½	1480-2½
			537 (600-1½)	797 (800-2½)

SE-2, 22 FEB 2024 to 21 MAR 2024

SE-2, 22 FEB 2024 to 21 MAR 2024

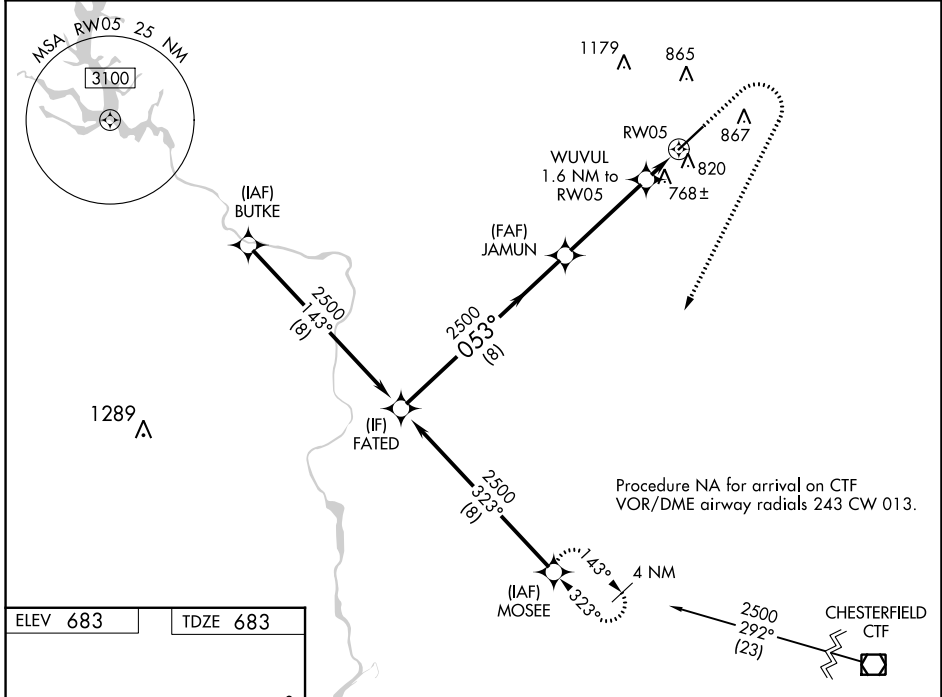
WAAS CH <b>66002</b> <b>W05A</b>	APP CRS <b>053°</b>	Rwy Idg TDZE Apt Elev	<b>7001</b> <b>683</b> <b>683</b>
--	------------------------	-----------------------------	---

# RNAV (GPS) RWY 5

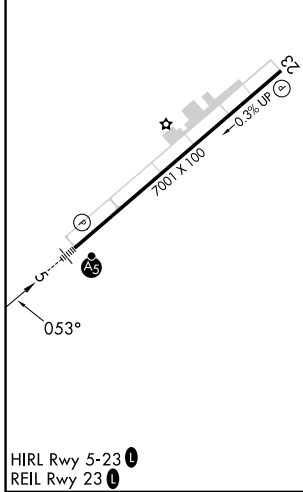
CHARLOTTE/MONROE EXEC (EQY)

RNP APCH-GPS.	MALSR	MISSED APPROACH: Climb to 1140 then climbing right turn to 2500 direct MOSEE and hold.
<p><b>⚠</b> Rwy 5 helicopter visibility reduction below 3/4 SM NA. For uncompensated Baro-VNAV systems, LNAV/VNAV NA below -7°C or above 54°C. Inop table does not apply to LPV all Cats. For inop ALS, increase LNAV/VNAV all Cats visibility to 3/8 SM and LNAV all Cats visibility to 1 SM.</p>		

ASOS <b>135.775</b>	CHARLOTTE APP CON <b>120.05 307.8</b>	CLNC DEL <b>132.55</b>	UNICOM <b>122.7 (CTAF) 0</b>
------------------------	--	---------------------------	---------------------------------



ELEV 683	TDZE 683
----------	----------



	FATED	JAMUN	WUVUL 1.6 NM to RW05	
	2500	2500	1220	
	053°		0.9 NM to RW05	
	8 NM	4 NM	0.7 NM	0.9 NM
CATEGORY	A	B	C	D
LPV DA		933-3/4	250 (300-3/4)	
LNAV/VNAV DA		1001-3/4	318 (400-3/4)	
LNAV MDA		1020-3/4	337 (400-3/4)	
<b>☑</b> CIRCLING	1220-1	537 (600-1)	1220-1 1/2 537 (600-1 1/2)	1480-2 1/2 797 (800-2 1/2)

SE-2, 22 FEB 2024 to 21 MAR 2024

SE-2, 22 FEB 2024 to 21 MAR 2024