

APP CRS **116°**  
 Rwy Idg **4304**  
 TDZE **869**  
 Apt Elev **869**

# RNAV (GPS) RWY 11

LUCE COUNTY (ERY)

RNP APCH - GPS.

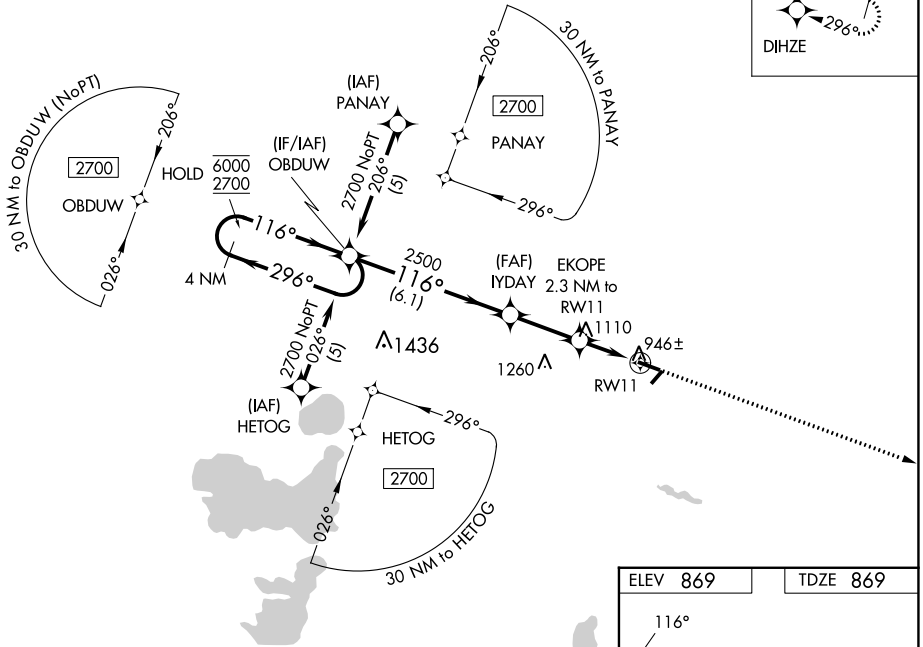
**⚠** Circling NA to Rwys 4 and 22. Rwy 11 helicopter visibility reduction below 3/4 SM NA.  
**⚠** For uncompensated Baro-VNAV systems, LNAV/VNAV NA below -16°C or above 54°C.

MISSED APPROACH:  
 Climb to 2700 direct  
 DIHZE and hold.

AWOS-3P  
**119.525**

MINNEAPOLIS CENTER  
**134.6 354.05**

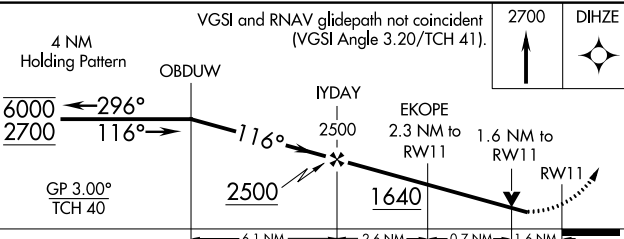
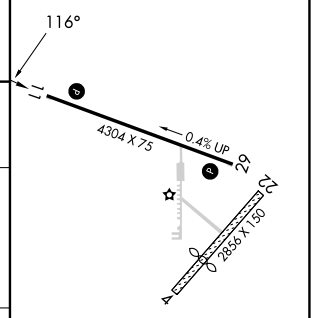
UNICOM  
**122.8 (CTAF) 0**



EC-1, 22 FEB 2024 to 21 MAR 2024

EC-1, 22 FEB 2024 to 21 MAR 2024

ELEV 869      TDZE 869



CATEGORY	A	B	C	D
LNAV/DA VNAV	1259-1 1/8		390 (400-1 1/8)	
LNAV MDA	1420-1 551 (600-1)		1420-1 5/8 551 (600-1 1/8)	
CIRCLING	1420-1 551 (600-1)		1460-1 1/8 591 (600-1 1/8) 1560-2 1/4 691 (700-2 1/4)	

MIRL Rwy 11-29 0  
 REIL Rws 11 and 29 0

WAAS CH <b>40418</b>	APP CRS <b>296°</b>	Rwy Idg TDZE Apt Elev	<b>4304</b> <b>867</b> <b>869</b>
<b>W29A</b>			

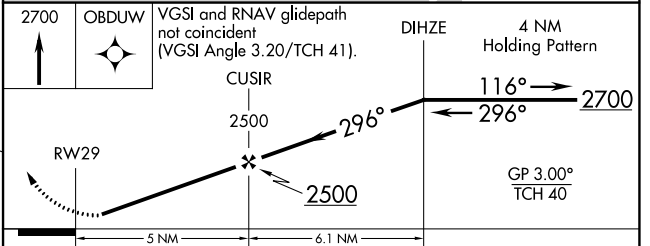
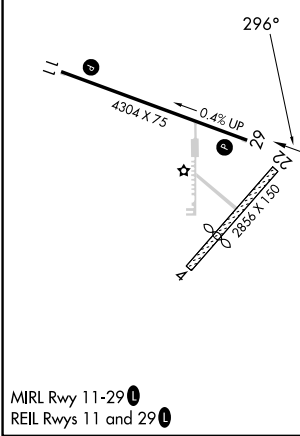
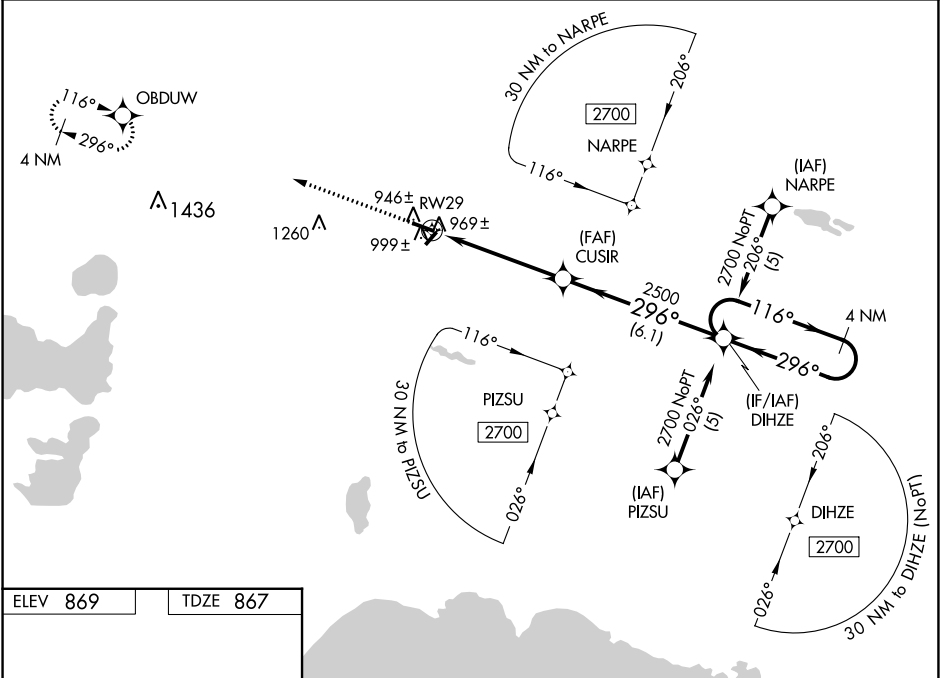
# RNAV (GPS) RWY 29

LUCE COUNTY (ERY)

**⚠** For uncompensated Baro-VNAV systems, LNAV/VNAV NA below -16°C (4°F) or above 47°C (116°F). DME/DME RNP-0.3 NA. Visibility reduction by helicopters NA. When local altimeter setting not received, use Chippewa County Intl altimeter setting and increase LPV DA to 1222 feet; increase LNAV/VNAV DA to 1344 feet; increase all MDAs 120 feet and LNAV visibility Cat C 3/8 SM and Cat D 1/8 SM, and Circling visibility Cat C/D 1/2 SM. Baro-VNAV NA when using Chippewa County Intl altimeter setting. Circling NA to Rwy's 4 and 22.

**MISSED APPROACH:**  
Climb to 2700 direct  
OBDUW and hold.

AWOS-3P <b>119.525</b>	MINNEAPOLIS CENTER <b>134.6 354.05</b>	UNICOM <b>122.8 (CTAF) 0</b>
---------------------------	---	---------------------------------



CATEGORY	A	B	C	D
LPV DA	1117-1		250 (300-1)	
LNAV/VNAV DA	1239-1½		372 (400-1½)	
LNAV MDA	1260-1		393 (400-1)	
	1260-1¼	393 (400-1¼)		
CIRCLING	1300-1	1380-1	1460-1½	1560-2¼
	431 (500-1)	511 (600-1)	591 (600-1½)	691 (700-2¼)