

WAAS CH 40104 W16A	APP CRS 169°	Rwy Idg 4797 TDZE 1319 Apt Elev 1319
--	------------------------	---

RNAV (GPS) RWY 16

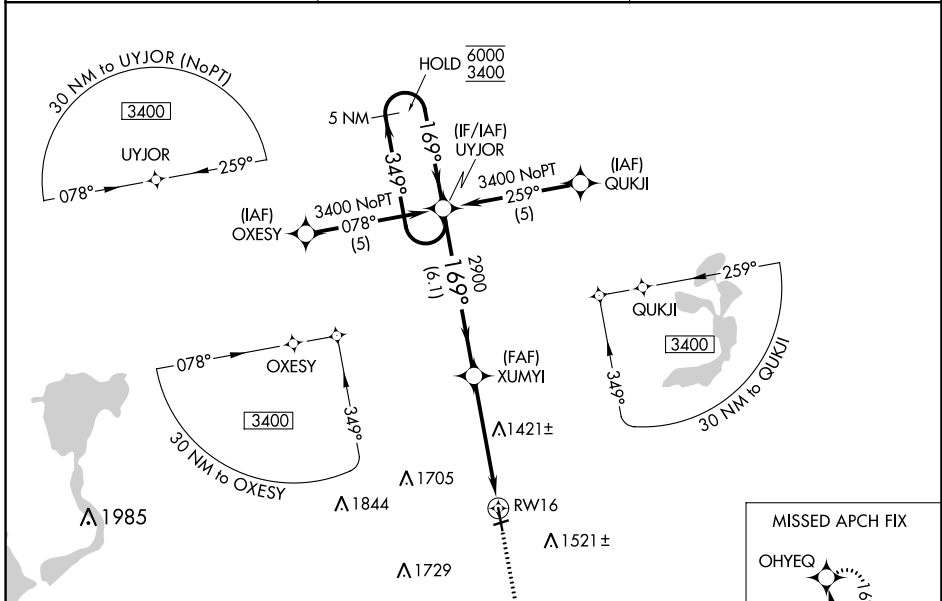
ESTHERVILLE MUNI (EST)

RNP APCH.

⚠ Circling NA to Rwy 6 and 24. Baro-VNAV and VDP NA when using Jackson altimeter setting. For uncompensated Baro-VNAV systems, LNAV/VNAV NA below -17°C or above 54°C. When local altimeter setting not received, use Jackson altimeter setting and increase all DA/MDA 60 feet.

MISSED APPROACH: Climb to 3400 direct OHYEQ and hold.

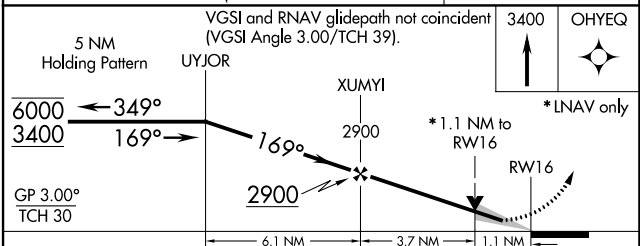
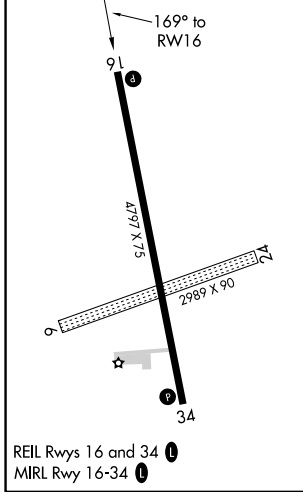
ASOS 121.425	MINNEAPOLIS CENTER 127.75 257.7	UNICOM 122.975 (CTAF) 0
------------------------	---	-----------------------------------



NC-3, 22 FEB 2024 to 21 MAR 2024

NC-3, 22 FEB 2024 to 21 MAR 2024

ELEV 1319	TDZE 1319
-----------	-----------



CATEGORY	A	B	C	D
LPV DA	1569-1	250 (300-1)		NA
LNAV/VNAV DA	1608-1	289 (300-1)		NA
LNAV MDA	1720-1	401 (500-1)		NA
C CIRCLING	1720-1 401 (500-1)	1840-1 521 (600-1)		NA

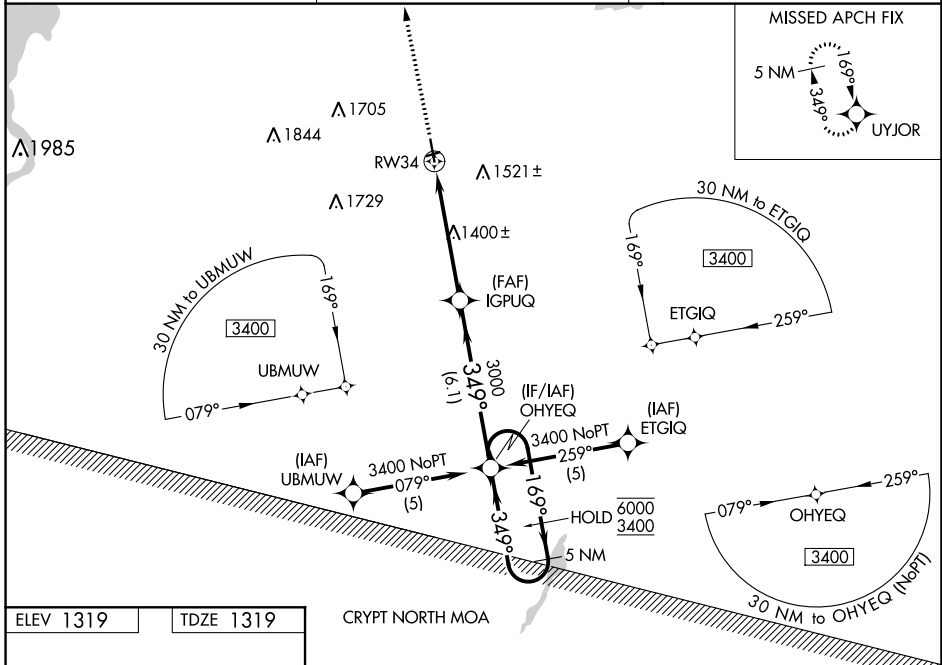
WAAS CH 82304 W34A	APP CRS 349°	Rwy Idg 4797 TDZE 1319 Apt Elev 1319
--	------------------------	---

RNAV (GPS) RWY 34

ESTHERVILLE MUNI (EST)

RNP APCH.	<p>⚠ Circling NA to Rwy 6 and 24. Baro-VNAV and VDP NA when using Jackson altimeter setting. For uncompensated Baro-VNAV systems, LNAV/VNAV NA below -17°C or above 54°C. When local altimeter not received, use Jackson altimeter setting and increase all DA/MDA 60 feet.</p>	MISSED APPROACH: Climb to 3400 direct UYJOR and hold.
-----------	--	---

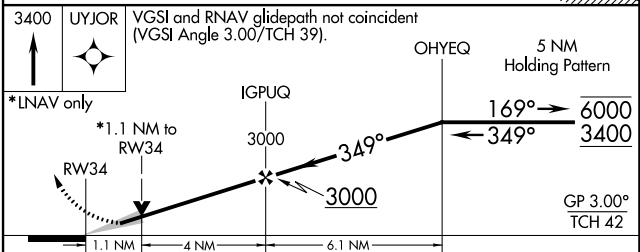
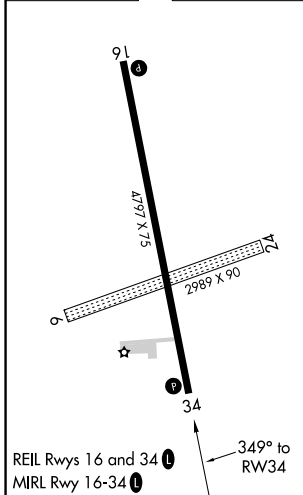
ASOS 121.425	MINNEAPOLIS CENTER 127.75 257.7	UNICOM 122.975 (CTAF) 0
------------------------	---	--



NC-3, 22 FEB 2024 to 21 MAR 2024

NC-3, 22 FEB 2024 to 21 MAR 2024

ELEV 1319	TDZE 1319
-----------	-----------



CATEGORY	A	B	C	D
LPV DA	1569-1	250 (300-1)		NA
LNAV/VNAV DA	1629-1	310 (400-1)		NA
LNAV MDA	1700-1	381 (400-1)		NA
C CIRCLING	1720-1 401 (500-1)	1840-1 521 (600-1)		NA