

(DAWNN1.DAWNN) 23334
DAWNN ONE DEPARTURE

AL-5733 (FAA)

EAGLE CREEK AIRPARK (EYE)
 INDIANAPOLIS, INDIANA

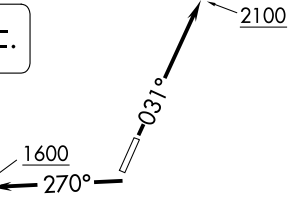
**TOP ALTITUDE:
 ASSIGNED BY ATC**

ASOS
 121.575
 CLNC DEL
 128.6
 INDIANAPOLIS DEP CON
 119.05 317.8

BRICKYARD
 116.3 VHP
 Chan 110

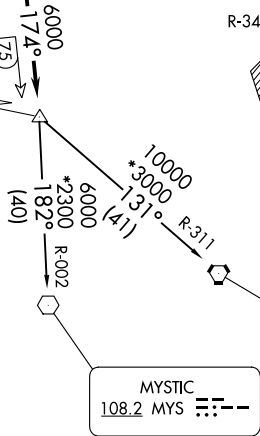
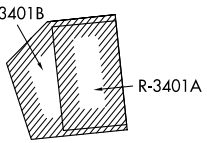
TERRE HAUTE
 115.3 TTH
 Chan 100

HOOSIER
 110.2 OOM
 Chan 39



TAKEOFF MINIMUMS:
 Rwy 3, 21: Standard.

DAWNN
 10000
 (For LOUISVILLE Transition)



LOUISVILLE
 114.8 IU
 Chan 95

MYSTIC
 108.2 MYS

EC-2, 22 FEB 2024 to 21 MAR 2024

EC-2, 22 FEB 2024 to 21 MAR 2024

- NOTE: RADAR required.
- NOTE: Select appropriate localizer/DME frequency/channel prior to departure.
- NOTE: Turbojets accelerate to 250K until reaching 10000, if unable advise ATC.
- NOTE: Assigned to aircraft with a requested altitude of 11000 or above.

(NARRATIVE ON FOLLOWING PAGE)

NOTE: Chart not to scale.

(DAWNN1.DAWNN) 07DEC17
DAWNN ONE DEPARTURE

INDIANAPOLIS, INDIANA
 EAGLE CREEK AIRPARK (EYE)



DEPARTURE ROUTE DESCRIPTION

TAKEOFF RWY 3: Climb heading 031° to 2100, then on assigned heading to assigned altitude. Thence....

TAKEOFF RWY 21: Climb heading 270° to 1600, then on assigned heading to assigned altitude. Thence....

...on RADAR vectors to join VHP R-174 to DAWNN INT then on transition or assigned route. Expect clearance to requested altitude ten minutes after departure.

LOUISVILLE TRANSITION (DAWNN1.IIU): From over DAWNN INT on IIU R-311 to IIU VORTAC.

MYSTIC TRANSITION (DAWNN1.MYS): From over DAWNN INT on MYS R-002 to MYS VOR.

EC-2, 22 FEB 2024 to 21 MAR 2024

EC-2, 22 FEB 2024 to 21 MAR 2024


(OOM5.OOM) 23334

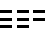
HOOSIER FIVE DEPARTURE

AL-5733 (FAA)

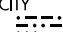
EAGLE CREEK AIRPARK (EYE)
INDIANAPOLIS, INDIANA

ASOS
121.575
CLNC DEL
128.6
INDIANAPOLIS DEP CON
119.05 317.8

BRICKYARD
116.3 VHP 
Chan 110

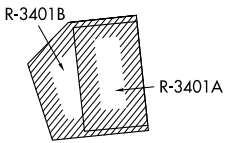
HOOSIER
110.2 OOM 
Chan 39

WEGEE
3500
*2300
207°
(42)

POCKET CITY
113.3 PXV 
Chan 80

**TOP ALTITUDE:
ASSIGNED BY ATC**

TAKEOFF MINIMUMS:
Rwy 3, 21: Standard.



DEPARTURE ROUTE DESCRIPTION

TAKEOFF RWY 3: Climb heading 031° to 2100, then on assigned heading to assigned altitude. Thence....

TAKEOFF RWY 21: Climb heading 270° to 1600, then on assigned heading to assigned altitude. Thence....

...expect RADAR vectors to join VHP R-195 to OOM VORTAC then via transition or assigned route. Expect clearance to requested altitude ten minutes after departure.

POCKET CITY TRANSITION (OOM5.PXV): From over OOM VORTAC via OOM R-207 to WEGEE, then via PXV R-043 to PXV VORTAC.

EC-2, 22 FEB 2024 to 21 MAR 2024

EC-2, 22 FEB 2024 to 21 MAR 2024

NOTE: RADAR required.

NOTE: Select appropriate localizer/DME frequency/channel prior to departure.

NOTE: Turbojets accelerate to 250K until reaching 10000, if unable advise ATC.

NOTE: Assigned to aircraft with a requested altitude of 11000 or above.

NOTE: Chart not to scale.

HOOSIER FIVE DEPARTURE

(OOM5.OOM) 01FEB18

INDIANAPOLIS, INDIANA
EAGLE CREEK AIRPARK (EYE)

(MAREO5.MAREO) 23334
MAREO FIVE DEPARTURE

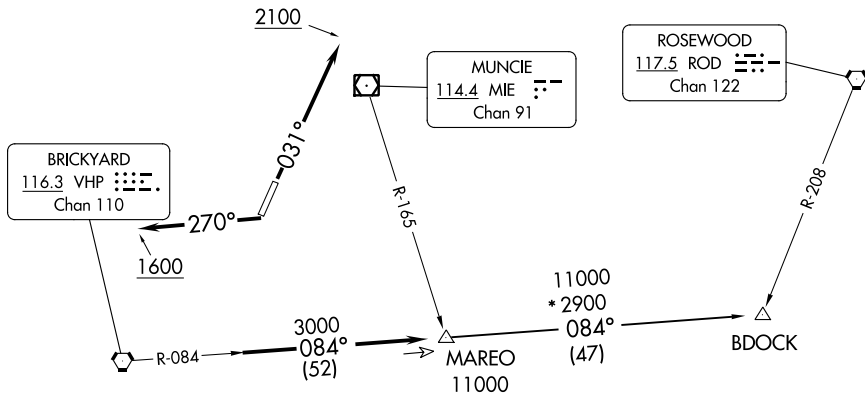
AL-5733 (FAA)

EAGLE CREEK AIRPARK (EYE)
 INDIANAPOLIS, INDIANA

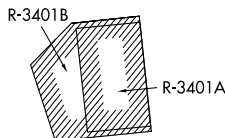
ASOS
 121.575
 CLNC DEL
 128.6
 INDIANAPOLIS DEP CON
 119.05 317.8

TAKEOFF MINIMUMS
 Rwy's 3, 21: Standard.

**TOP ALTITUDE:
 ASSIGNED BY ATC**



- NOTE: RADAR required.
- NOTE: Select appropriate localizer/DME frequency/channel prior to departure.
- NOTE: Turbojets accelerate to 250K until reaching 10000, if unable advise ATC.
- NOTE: Assigned to aircraft with a requested altitude of 11000 or above.



NOTE: Chart not to scale.

DEPARTURE ROUTE DESCRIPTION

TAKEOFF RWY 3: Climb heading 031° to 2100, then on assigned heading to assigned altitude. Thence....

TAKEOFF RWY 21: Climb heading 270° to 1600, then on assigned heading to assigned altitude. Thence....

....expect RADAR vectors to join VHP R-084 to MAREO INT then via transition or assigned route. Expect clearance to requested altitude ten minutes after departure.

BDOCK TRANSITION (MAREO5.BDOCK): From over MAREO INT via VHP R-084 to BDOCK INT.

(MEARZ7.MEARZ) 23334

MEARZ SEVEN DEPARTURE

AL-5733 (FAA)

EAGLE CREEK AIRPARK (EYE)
INDIANAPOLIS, INDIANA

**TOP ALTITUDE:
ASSIGNED BY ATC**

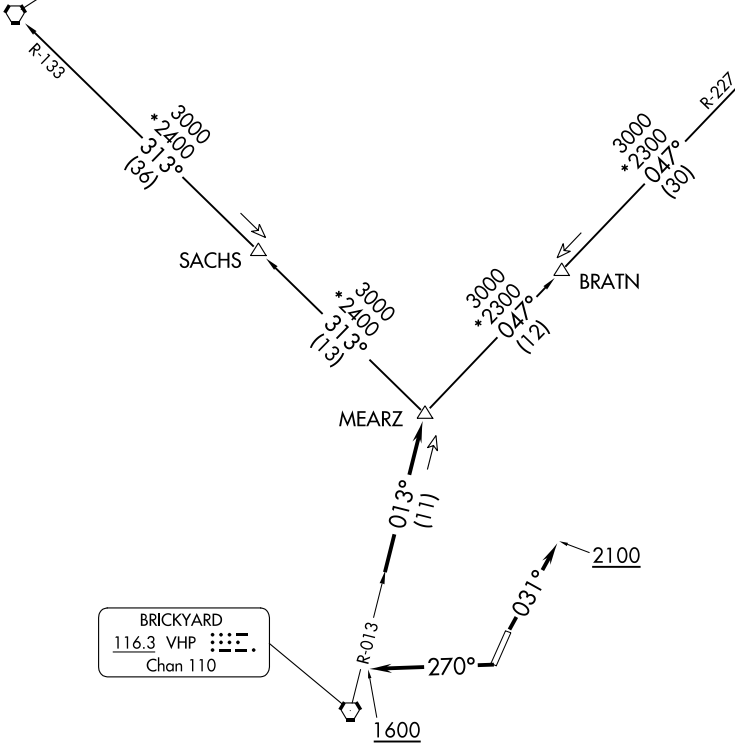
RADAR required.

ASOS
121.575
CLNC DEL
128.6
INDIANAPOLIS DEP CON
119.05 317.8

BOILER
115.1 BVT
Chan 98

MARION
108.6 MZZ
Chan 23

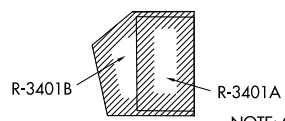
BRICKYARD
116.3 VHP
Chan 110



TAKEOFF MINIMUMS
Rwy 3, 21: Standard.

- NOTE: Turbojets accelerate to 250K until reaching 10000, if unable advise ATC.
- NOTE: Assigned to aircraft with a requested altitude of 11000 or above.
- NOTE: Select appropriate localizer/DME frequency/channel prior to departure.

(NARRATIVE ON FOLLOWING PAGE)



NOTE: Chart not to scale.

EC-2, 22 FEB 2024 to 21 MAR 2024

EC-2, 22 FEB 2024 to 21 MAR 2024

MEARZ SEVEN DEPARTURE

(MEARZ7.MEARZ) 19MAY22

INDIANAPOLIS, INDIANA
EAGLE CREEK AIRPARK (EYE)



DEPARTURE ROUTE DESCRIPTION

TAKEOFF RUNWAY 3: Climb on heading 031° to 2100 before turning on course. Thence....

TAKEOFF RUNWAY 21: Climb on heading 270° to 1600 then on assigned heading to assigned altitude. Thence....

....expect RADAR vectors to join VHP R-013 to MEARZ then on transition or assigned route. Expect clearance to requested altitude ten minutes after departure.

BOILER TRANSITION (MEARZ7.BVT): From over MEARZ on BVT R-133 to BVT VORTAC.

MARION TRANSITION (MEARZ7.MZZ): From over MEARZ on MZZ R-227 to MZZ VOR/DME.

EC-2, 22 FEB 2024 to 21 MAR 2024


EC-2, 22 FEB 2024 to 21 MAR 2024

(ROCKY1.ROCKY) 23334
ROCKY ONE DEPARTURE

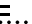
AL-5733 (FAA)

EAGLE CREEK AIRPARK (EYE)
 INDIANAPOLIS, INDIANA

ASOS
 121.575
 CLNC DEL
 128.6
 INDIANAPOLIS DEP CON
 119.05 317.8

SPINNER
112.7 SPI 
 Chan 74

**TOP ALTITUDE:
 ASSIGNED BY ATC**


TERRE HAUTE
115.3 TTH 
 Chan 100

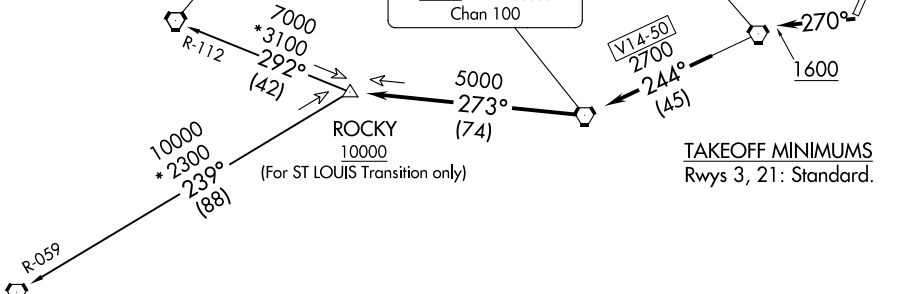
BRICKYARD
116.3 VHP 
 Chan 110

V14-50
 2700
 244°
 (45)

ROCKY
 10000
 (For ST LOUIS Transition only)

TAKEOFF MINIMUMS
 Rwys 3, 21: Standard.

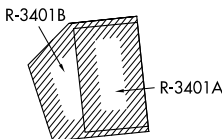
ST LOUIS
117.4 STL 
 Chan 121



EC-2, 22 FEB 2024 to 21 MAR 2024

EC-2, 22 FEB 2024 to 21 MAR 2024

- NOTE: RADAR required.
- NOTE: Select appropriate localizer/DME frequency/channel prior to departure.
- NOTE: Turbojets accelerate to 250K until reaching 10000, if unable advise ATC.
- NOTE: Assigned to aircraft with a requested altitude of 11000 or above.



NOTE: Chart not to scale.



DEPARTURE ROUTE DESCRIPTION

TAKEOFF RWY 3: Climb heading 031° to 2100, then on assigned heading to assigned altitude. Thence

TAKEOFF RWY 21: Climb heading 270° to 1600, then on assigned heading to assigned altitude. Thence

. . . . expect RADAR vectors to join VHP R-244 to TTH VORTAC, then via TTH R-273 to ROCKY INT then via transition or assigned route. Expect clearance to requested altitude ten minutes after departure.

SPINNER TRANSITION (ROCKY1.SPI): From over ROCKY INT on SPI R-112 to SPI VORTAC.
ST LOUIS TRANSITION (ROCKY1.STL): From over ROCKY INT on STL R-059 to STL VORTAC.

ROCKY ONE DEPARTURE
 (ROCKY1.ROCKY) 01FEB18

INDIANAPOLIS, INDIANA
 EAGLE CREEK AIRPARK (EYE)