

LOC I-EYE <b>111.5</b>	APP CRS <b>211°</b>	Rwy Idg <b>4200</b>
		TDZE <b>823</b>
		Apt Elev <b>823</b>

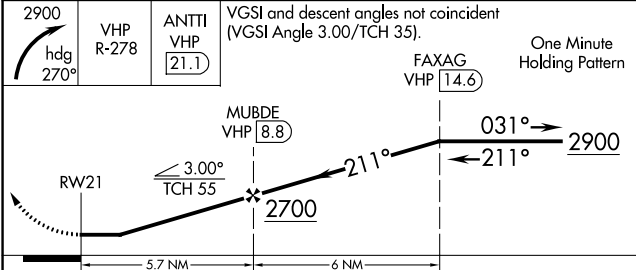
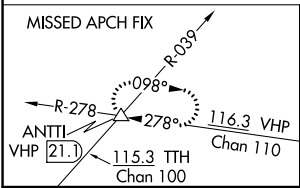
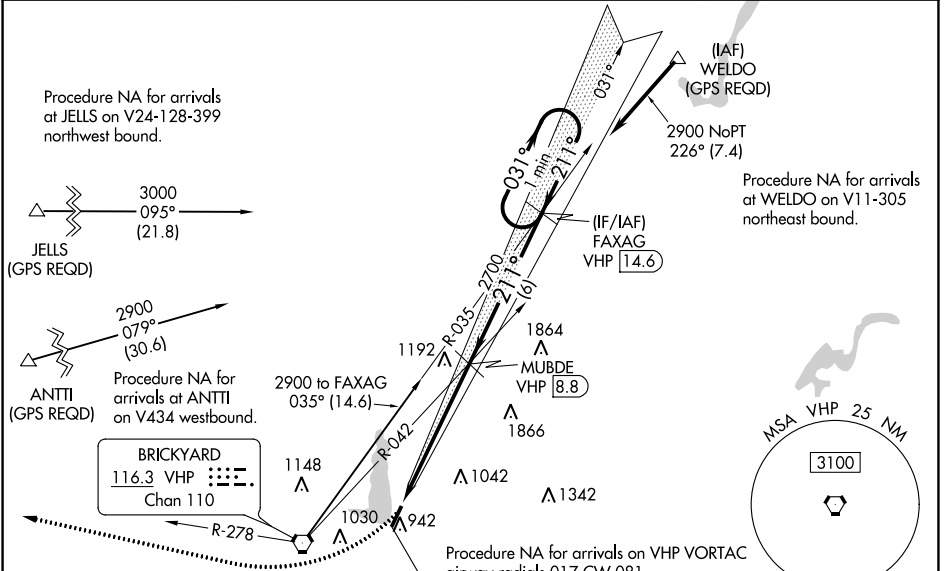
# LOC RWY 21

EAGLE CREEK AIRPARK (EYE)

**NA** Helicopter visibility reduction below 3/4 SM NA. When local altimeter setting not received, use Indianapolis Intl altimeter setting and increase all MDA 20 feet. DME required. For inoperative MALS, increase Cat C visibility to 1 1/2 mile.

**MALS** MISSED APPROACH: Climbing right turn to 2900 on heading 270° and VHP R-278 to ANTTI INT/VHP 21.1 DME and hold.

ASOS <b>121.575</b>	INDIANAPOLIS APP CON <b>119.05 317.8</b>	CLNC DEL <b>128.6</b>	UNICOM <b>122.8 (CTAF) 0</b>
------------------------	---	--------------------------	---------------------------------



ELEV 823	TDZE 823
----------	----------

MALS 14.6

MRL Rwy 3-21 0

REIL Rwy 3 1

FAF to MAP 5.7 NM

Knots	60	90	120	150	180
Min:Sec	5:42	3:48	2:51	2:17	1:54

CATEGORY	A	B	C	D
S-21	1340-3/4	517 (600-3/4)	1340-1 1/4 517 (600-1 1/4)	NA
<b>C</b> CIRCLING	1340-1	517 (600-1)	1500-2 677 (700-2)	NA

EC-2, 22 FEB 2024 to 21 MAR 2024

EC-2, 22 FEB 2024 to 21 MAR 2024

WAAS CH <b>82509</b> <b>W21A</b>	APP CRS <b>211°</b>	Rwy Idg TDZE Apt Elev	<b>4200</b> <b>823</b> <b>823</b>
--	------------------------	-----------------------------	---

# RNAV (GPS) RWY 21

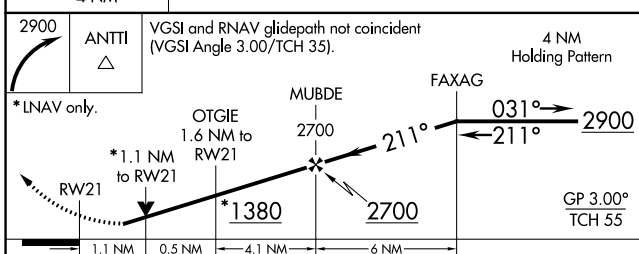
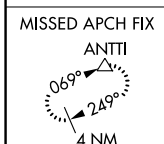
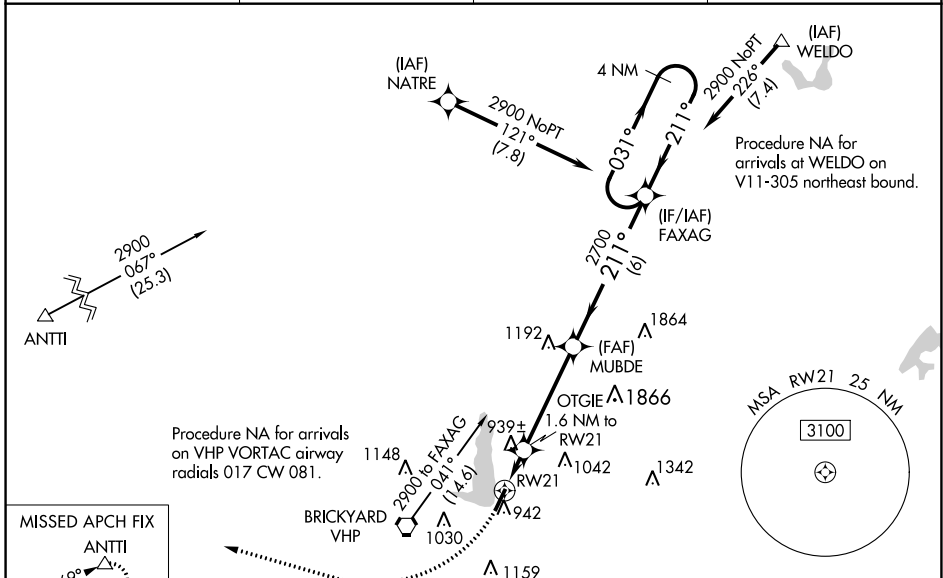
EAGLE CREEK AIRPARK (EYE)

**⚠** For uncompensated Baro-VNAV systems, LNAV/VNAV NA below 0°C (32°F) or above 54°C (130°F). DME/DME RNP-0.3 NA. For inoperative MAL S, increase LPV visibility all Cats to 7/8 mile. Inoperative table does not apply to LNAV/VNAV. Helicopter visibility reduction below 3/4 SM NA.

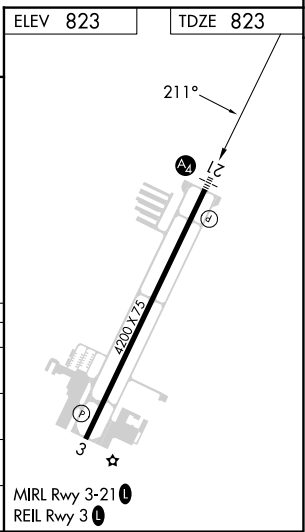
MALS

MISSED APPROACH: Climbing right turn to 2900 direct ANTTI and hold.

ASOS <b>121.575</b>	INDIANAPOLIS APP CON <b>119.05 317.8</b>	CLNC DEL <b>128.6</b>	UNICOM <b>122.8 (CTAF)</b>
------------------------	---	--------------------------	-------------------------------



CATEGORY	A	B	C	D
LPV DA	1091-3/4	268 (300-3/4)		NA
LNAV/VNAV DA	1076-3/4	253 (300-3/4)		NA
LNAV MDA	1200-3/4	377 (400-3/4)		NA
CIRCLING	1320-1	497 (500-1)	1500-2 677 (700-2)	NA



EC-2, 22 FEB 2024 to 21 MAR 2024

EC-2, 22 FEB 2024 to 21 MAR 2024

VORTAC VHP <b>116.3</b> Chan <b>110</b>	APP CRS <b>076°</b>	Rwy Idg TDZE Apt Elev	<b>N/A</b> <b>N/A</b> <b>823</b>
---	------------------------	-----------------------------	--

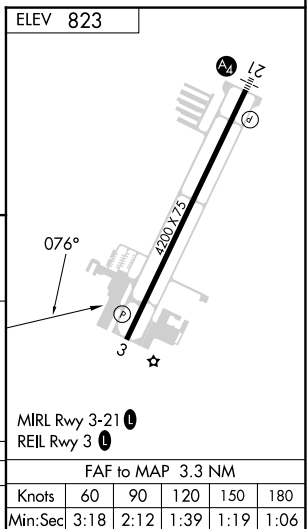
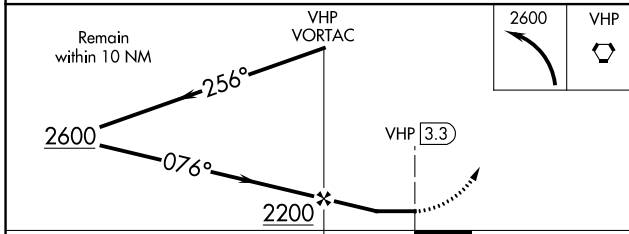
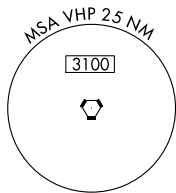
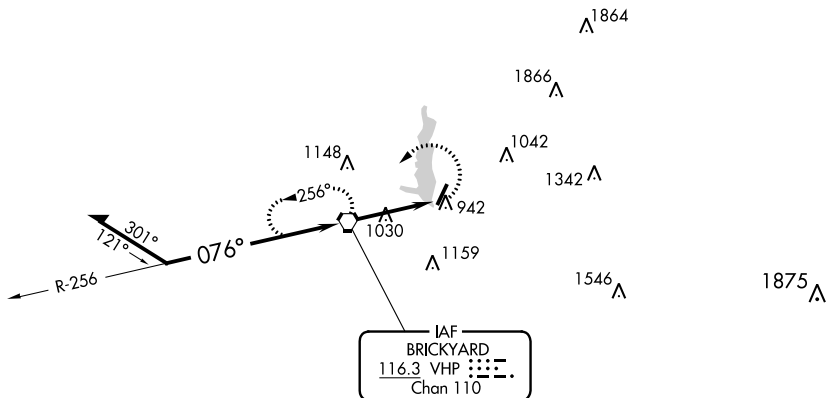
# VOR-A

EAGLE CREEK AIRPARK (EYE)

**⚠** When local altimeter setting not received, use Indianapolis Intl altimeter setting and increase all MDA 20 feet.

**MISSED APPROACH:** Climbing left turn to 2600 direct VHP VORTAC and hold.

ASOS <b>121.575</b>	INDIANAPOLIS APP CON <b>119.05 317.8</b>	CLNC DEL <b>128.6</b>	UNICOM <b>122.8 (CTAF) 0</b>
------------------------	---	--------------------------	---------------------------------



CATEGORY	A	B	C	D
<b>C</b> CIRCLING	1320-1	497 (500-1)	1500-2 677 (700-2)	NA

EC-2, 22 FEB 2024 to 21 MAR 2024

EC-2, 22 FEB 2024 to 21 MAR 2024