

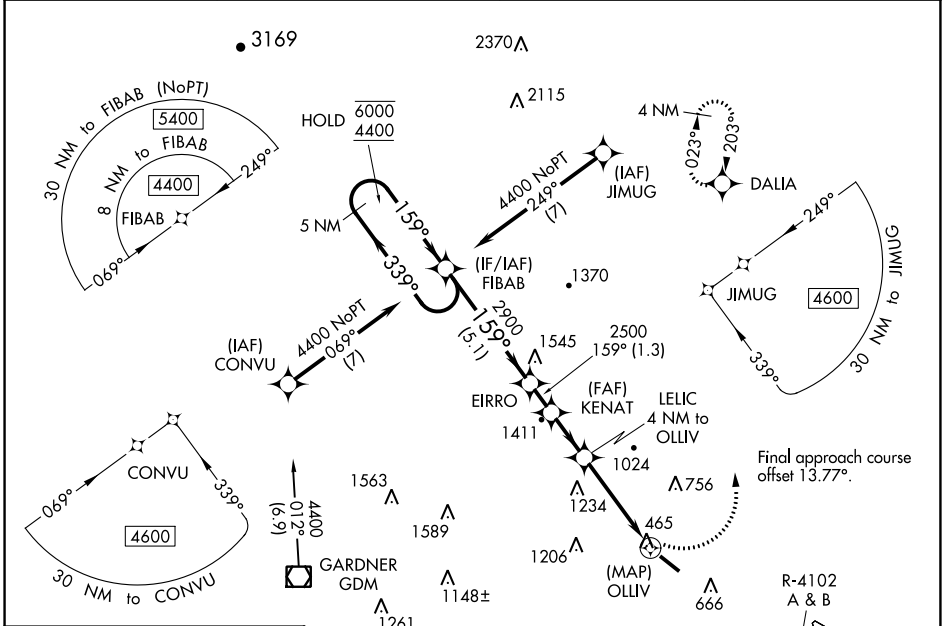
APP CRS	Rwy Idg	4538
159°	TDZE	344
	Apt Elev	345

RNAV (GPS) RWY 14

FITCHBURG MUNI (FIT)

RNP APCH.	<p>MISSED APPROACH: Climbing left turn to 3500 direct DALIA and hold.</p>
<p>Rwy 14 helicopter visibility reduction below 3/4 SM NA. Circling NA southwest of Rwy 14-32 at night.</p> <p>-22°C</p>	

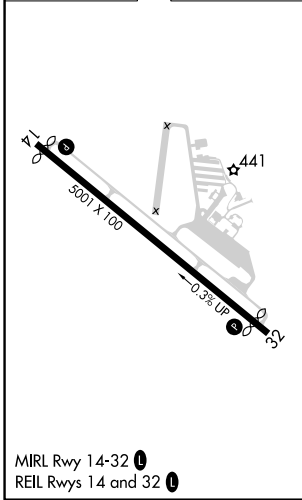
ASOS 135.175	BOSTON APP CON 124.4 279.6	UNICOM 122.7 (CTAF)	123.0 0
------------------------	--------------------------------------	-------------------------------	-----------------------



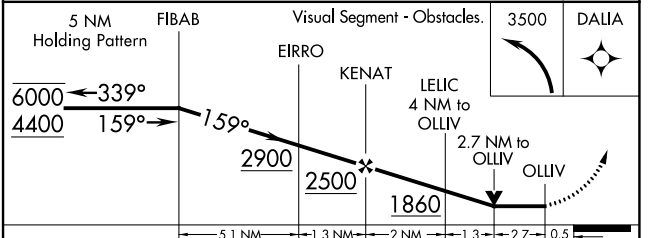
NE-1, 22 FEB 2024 to 21 MAR 2024

NE-1, 22 FEB 2024 to 21 MAR 2024

ELEV 345	D	TDZE 344
----------	----------	----------



Procedure NA for arrival on GDM VOR/DME airway radials 339 CW 042.



CATEGORY	A	B	C	D
LNAV MDA	1420-1 1/4 1076 (1100-1 1/4)	1420-1 1/2 1076 (1100-1 1/2)	1420-3 1076 (1100-3)	NA
C CIRCLING	1420-1 1/4 1075 (1100-1 1/4)	1420-1 1/2 1075 (1100-1 1/2)	1520-3 1175 (1200-3)	NA

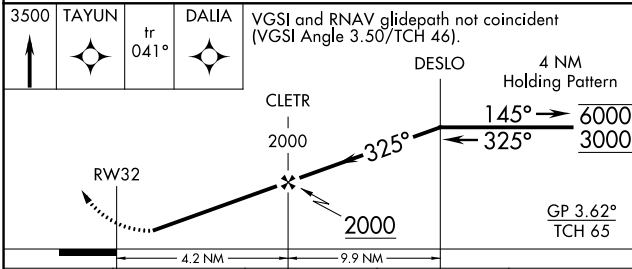
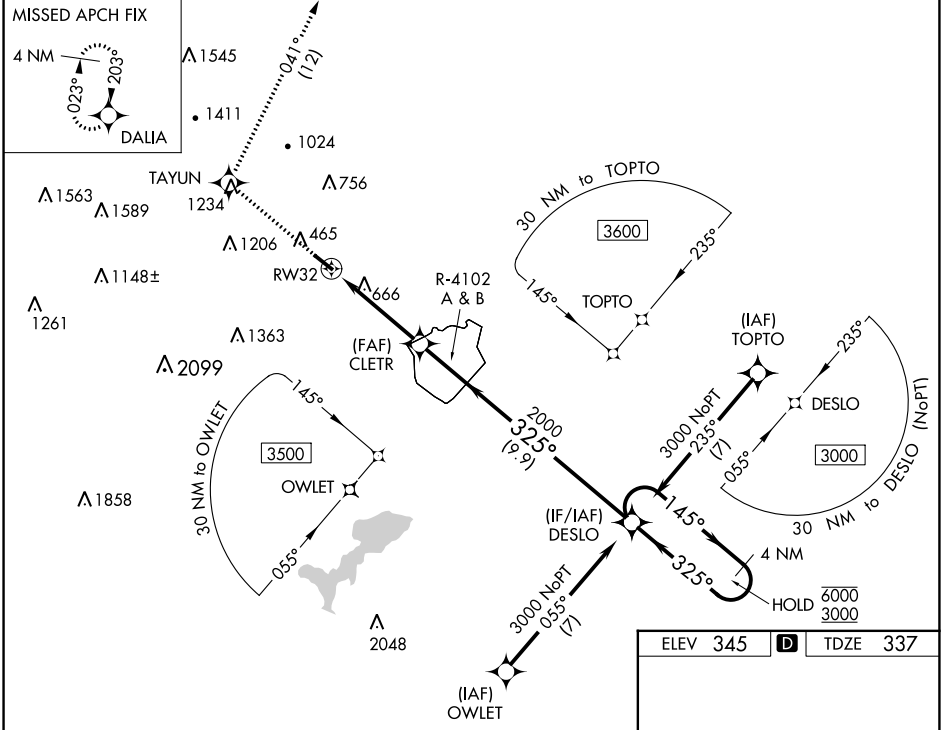
WAAS CH 48944 W32A	APP CRS 325°	Rwy Idg 4538 TDZE 337 Apt Elev 345
--	------------------------	---

RNAV (GPS) RWY 32

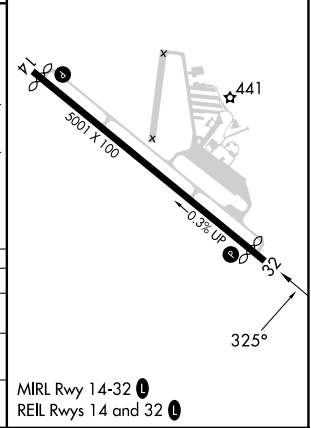
FITCHBURG MUNI (FIT)

RNP APCH - GPS.		MISSED APPROACH: Climb to 3500 direct TAYUN and on track 041° to DALIA and hold.	
<p>⚠ Rwy 32 helicopter visibility reduction below 1 SM NA. ⚠ Procedure NA when R-4102 A & B are active. ❄ -22°C Circling NA southwest of Rwy 14-32 at night.</p>	ASOS 135.175	BOSTON APP CON 124.4 279.6	UNICOM 122.7 (CTAF)

ASOS 135.175	BOSTON APP CON 124.4 279.6	UNICOM 122.7 (CTAF)	123.0 Ⓛ
------------------------	--------------------------------------	-------------------------------	-----------------------



ELEV 345	D	TDZE 337
-----------------	----------	-----------------



CATEGORY	A	B	C	D
LPV DA	773-1¼	436 (500-1¼)		NA
LNVA MDA	960-1	623 (700-1)	960-1¼ 623 (700-1¼)	NA
C CIRCLING	1080-1 735 (800-1)	1380-1½ 1035 (1100-1½)	1520-3 1175 (1200-3)	NA

NE-1, 22 FEB 2024 to 21 MAR 2024

NE-1, 22 FEB 2024 to 21 MAR 2024