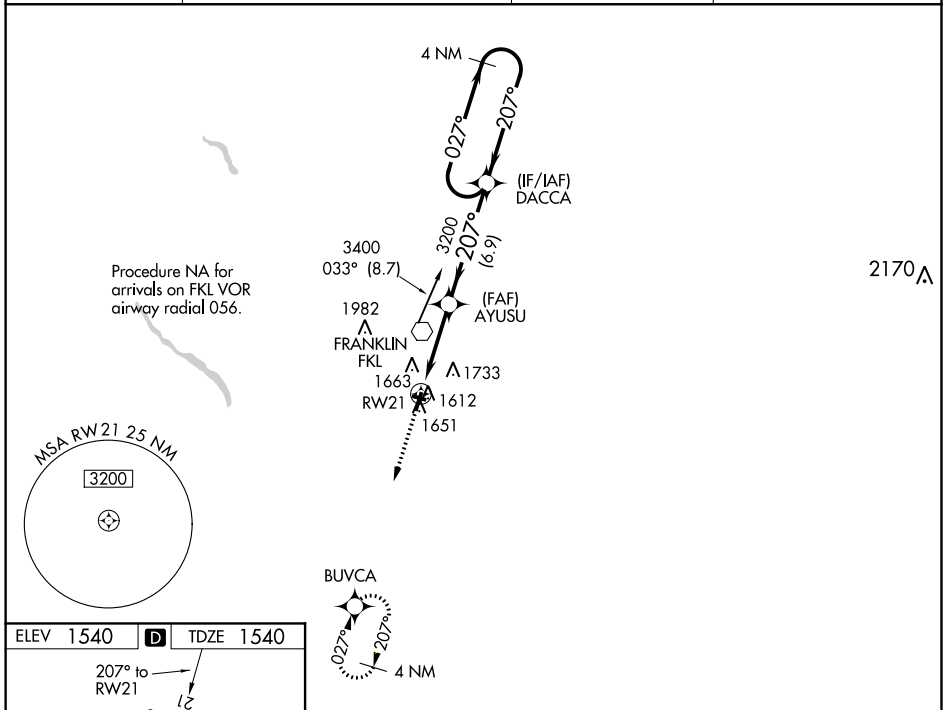


WAAS CH 77501 W21A	APP CRS 207°	Rwy Idg TDZE Apt Elev	5200 1540 1540
----------------------------------------	------------------------	-----------------------------	-------------------------------------------

RNAV (GPS) RWY 21

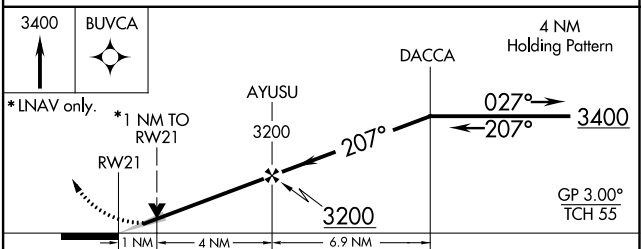
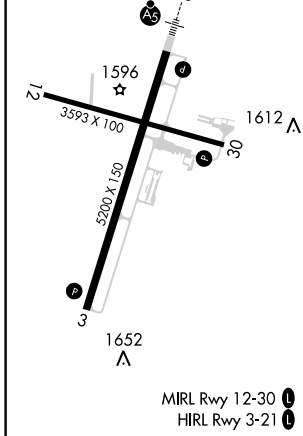
VENANGO RGNL (F'KL)

RNP APCH.		MALSR	MISSED APPROACH: Climb to 3400 direct BUVCA and hold.
<p>▼ For uncompensated Baro-VNAV systems, LNAV/VNAV NA below -18°C (0°F) or above 45°C (114°F). Circling Rwy 12 NA at night. For inop ALS, increase LPV all Cats visibility to ¾ SM and LNAV Cats C/D visibility to 1 SM.</p>			
AWOS-3PT 118.175	YOUNGSTOWN APP CON ★ 126.25 322.3	CLNC DEL 126.25	UNICOM 122.7 (CTAF)



NE-4, 30 DEC 2021 to 27 JAN 2022

NE-4, 30 DEC 2021 to 27 JAN 2022



CATEGORY	A	B	C	D
LPV DA		1803-½	263 (300-½)	
LNAV/VNAV DA		1901-¾	361 (400-¾)	
LNAV MDA	1900-½	360 (400-½)	1900-⅝	360 (400-⅝)
CIRCLING	1960-1¼ 420 (500-1¼)	2000-1¼ 460 (500-1¼)	2040-1½ 500 (500-1½)	2100-2 560 (600-2)

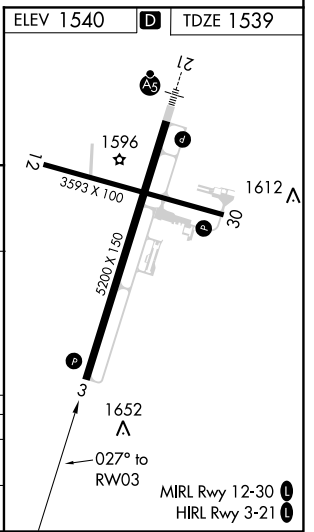
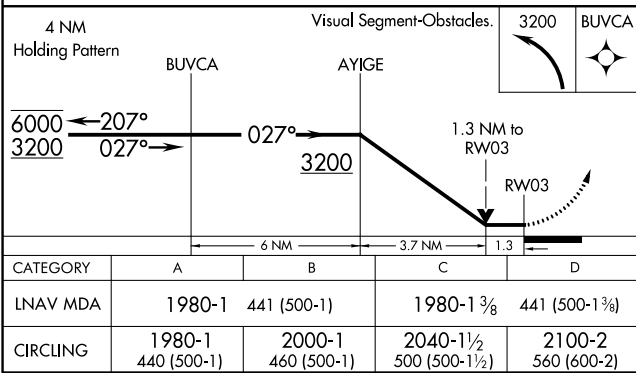
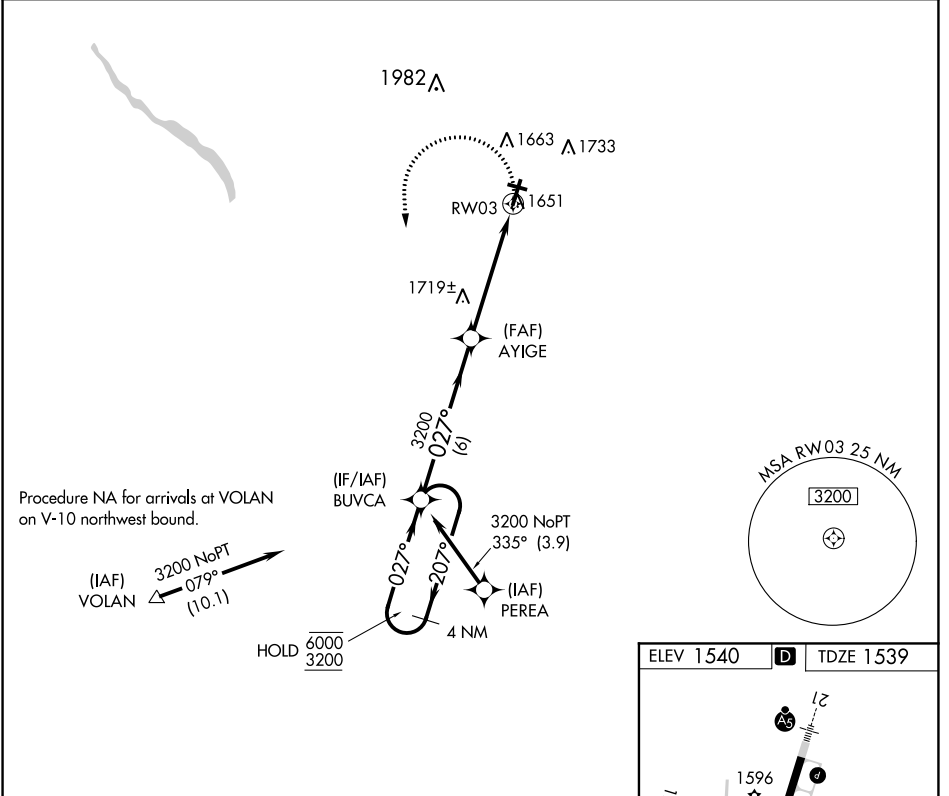
RNAV (GPS) RWY 3

VENANGO RGNL (F'KL)

APP CRS 027°	Rwy Idg 5200
	TDZE 1539
	Apt Elev 1540

RNP APCH.	MISSED APPROACH: Climbing left turn to 3200 direct BUVCA and hold.
Rwy 3 helicopter visibility reduction below 3/4 SM NA.	
Circling Rwy 12 NA at night.	

AWOS-3PT 118.175	YOUNGSTOWN APP CON ★ 126.25 322.3	CLNC DEL 126.25	UNICOM 122.7 (CTAF)
----------------------------	---------------------------------------------	---------------------------	-------------------------------



NE-4, 30 DEC 2021 to 27 JAN 2022

NE-4, 30 DEC 2021 to 27 JAN 2022

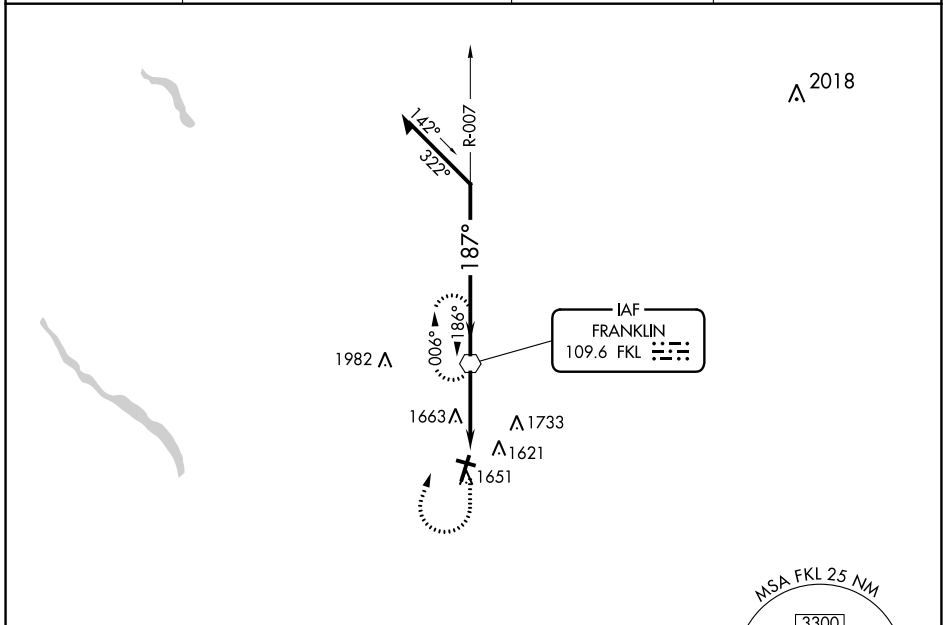
VOR FKL 109.6	APP CRS 187°	Rwy ldg 5200
		TDZE 1540
		Apt Elev 1540

VOR RWY 21

VENANGO RGNL (FKL)

	Inop table does not apply. When local altimeter setting not received, use Port Meadville altimeter setting and increase all MDA 80 feet and S-21 Cats C/D visibility 3/8 mile. Circling Rwy 12 NA at night. Rwy 12 helicopter visibility reduction below 1 SM NA.		MISSED APPROACH: Climb to 2200, then climbing right turn to 3300 direct FKL VOR and hold.

AWOS-3PT 118.175	YOUNGSTOWN APP CON ★ 126.25 322.3	CLNC DEL 126.25	UNICOM 122.7 (CTAF)
----------------------------	---------------------------------------------	---------------------------	-------------------------------



ELEV 1540		TDZE 1540
-----------	--	-----------

187° 3.3 NM from FAF	
----------------------	--

3	2	1
---	---	---

1652		MIRL Rwy 12-30
		HIRL Rwy 3-21

FAF to MAP 3.3 NM					
Knots	60	90	120	150	180
Min:Sec	3:18	2:12	1:39	1:19	1:06

2200	3300	FKL
------	------	-----

Remain within 10 NM

CATEGORY	A	B	C	D
S-21	1920-1 380 (400-1)			
CIRCLING	1960-1 420 (500-1)	2000-1 460 (500-1)	2040-1½ 500 (500-1½)	2100-2 560 (600-2)

NE-4, 30 DEC 2021 to 27 JAN 2022

NE-4, 30 DEC 2021 to 27 JAN 2022