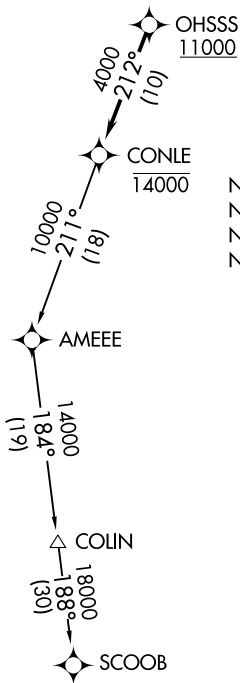


CONLE FOUR DEPARTURE (RNAV)

AWOS-3PT
128.275
CLNC DEL
121.6
UNICOM
123.075 (CTAF)
POTOMAC DEP CON
128.7 307.9

**TOP ALTITUDE:
ASSIGNED BY ATC**



NOTE: RNAV 1.
NOTE: DME/DME/IRU or GPS required.
NOTE: RADAR required.
NOTE: For turbojet aircraft only.

TAKEOFF MINIMUMS:
Rwy 14, 32: Standard.

NE-3, 22 APR 2021 to 20 MAY 2021

NE-3, 22 APR 2021 to 20 MAY 2021

NOTE: Chart not to scale.



DEPARTURE ROUTE DESCRIPTION

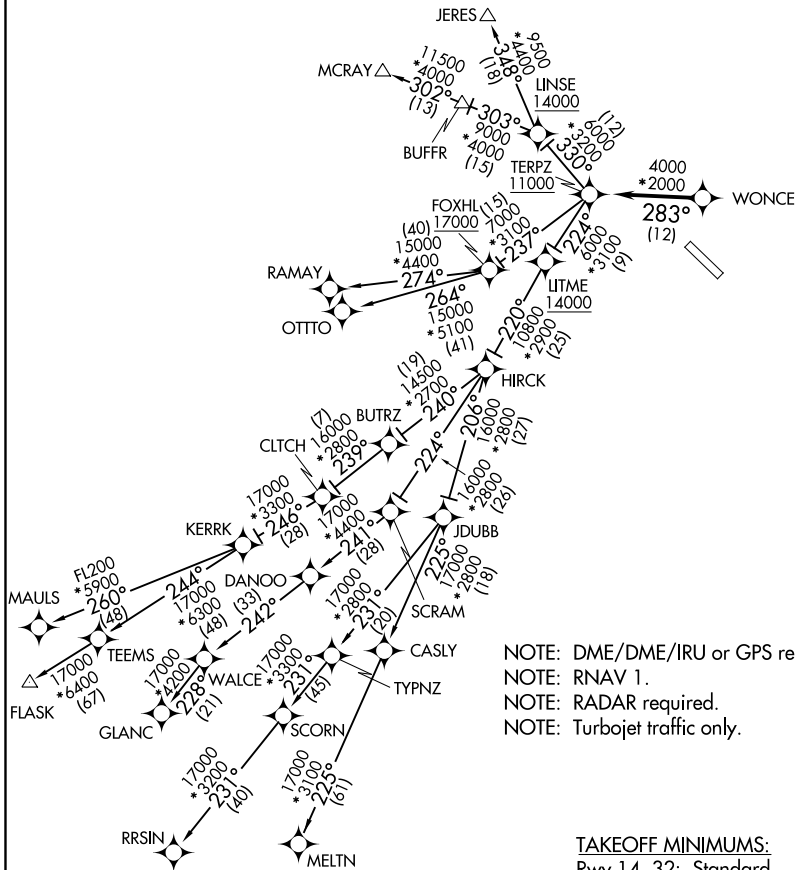
Climb on assigned heading to ATC assigned altitude, for vectors to cross OHSSS at or above 11000, then on track 212° to cross CONLE at or below 14000, then on assigned transition. Expect filed altitude within 10 minutes after departure.

COLIN TRANSITION (CONLE4.COLIN)
SCOOB TRANSITION (CONLE4.SCOOB)

TERPZ SEVEN DEPARTURE (RNAV)

AWOS-3PT
 128.275
 CLNC DEL
 121.6
 UNICOM
 123.075 (CTAF)
 POTOMAC DEP CON
 128.7 307.9

TOP ALTITUDE:
RAMAY, OTTTO, MAULS, FLASK,
RRSIN, GLANC, MELTN
TRANSITIONS: 17000
JERES, MCRAY TRANSITIONS:
16000



TAKEOFF MINIMUMS:
 Rwy 14, 32: Standard.

NOTE: Chart not to scale.

TERPZ SEVEN DEPARTURE (RNAV)

NE-3, 22 APR 2021 to 20 MAY 2021

NE-3, 22 APR 2021 to 20 MAY 2021

TERPZ SEVEN DEPARTURE (RNAV)



DEPARTURE ROUTE DESCRIPTION

Fly heading and maintain altitude assigned by ATC, expect RADAR vectors to WONCE, then on track 283° to cross TERPZ at or above 11000, thence. . . .

. . . on assigned transition: Departures on JERES and MCRA Y transitions maintain 16000. Departures on RAMAY, OTTTO, MAULS, FLASK, MELTN, RRSIN, GLANC transitions maintain 17000, expect further clearance to filed altitude within 10 minutes after departure.

- FLASK TRANSITION (TERPZ7.FLASK)
- GLANC TRANSITION (TERPZ7.GLANC)
- JERES TRANSITION (TERPZ7.JERES)
- MAULS TRANSITION (TERPZ7.MAULS)
- MCRA Y TRANSITION (TERPZ7.MCRA Y)
- MELTN TRANSITION (TERPZ7.MELTN)
- OTTTO TRANSITION (TERPZ7.OTTTO)
- RAMAY TRANSITION (TERPZ7.RAMAY)
- RRSIN TRANSITION (TERPZ7.RRSIN)

NE-3, 22 APR 2021 to 20 MAY 2021

NE-3, 22 APR 2021 to 20 MAY 2021