

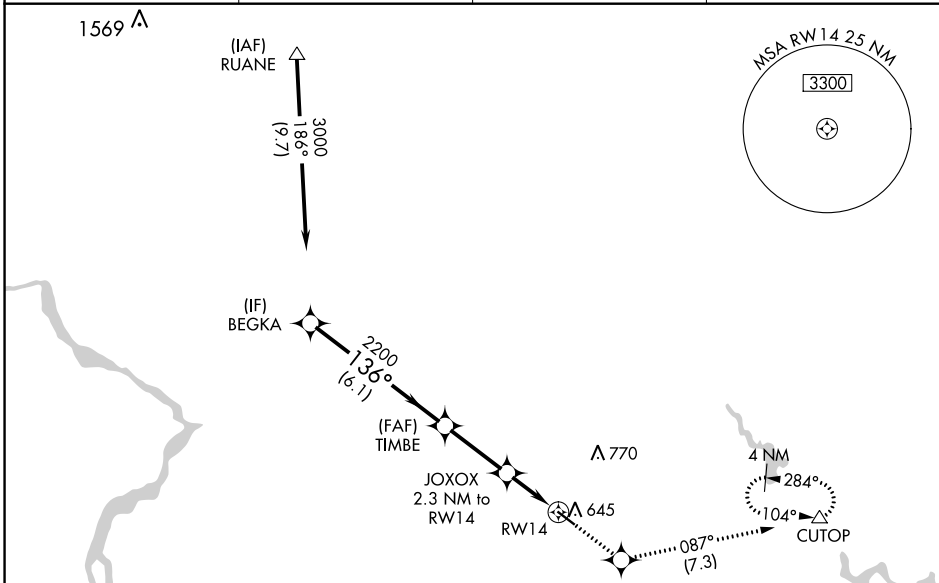
WAAS CH <b>77502</b> <b>W14A</b>	APP CRS <b>136°</b>	Rwy Idg TDZE Apt Elev	<b>4202</b> <b>520</b> <b>539</b>
--	------------------------	-----------------------------	---

# RNAV (GPS) RWY 14

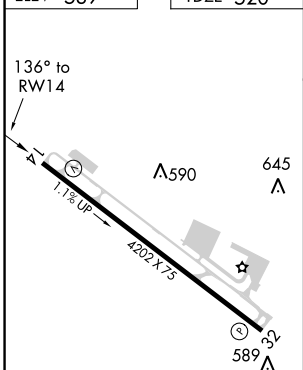
MONTGOMERY COUNTY AIRPARK (GAI)

RNP APCH.	<p>Baro-VNAV NA when using Washington Dulles Intl altimeter setting. For uncompensated Baro-VNAV systems, LNAV/VNAV NA below -16°C or above 36°C. When local altimeter setting not received, use Washington Dulles Intl altimeter setting and increase all DA/MDAs 80 feet and all visibilities ¼ mile. Rwy 14 helicopter visibility reduction below ¼ SM NA.</p>	<p>MISSED APPROACH: Climb to 2100 direct FIRAN and on track 087° to CUTOP and hold.</p>
-----------	---	---

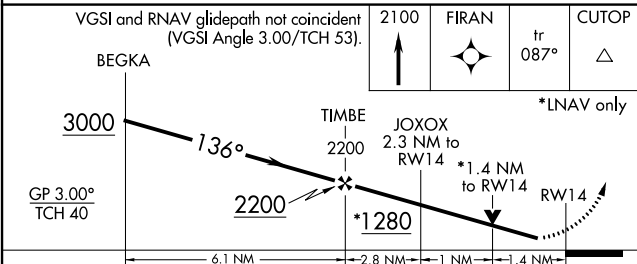
AWOS-3PT <b>128.275</b>	POTOMAC APP CON <b>128.7 307.9</b>	CLNC DEL <b>121.6</b>	UNICOM <b>123.075</b> (CTAF) <b>1</b>
----------------------------	---------------------------------------	--------------------------	--



ELEV 539	TDZE 520
----------	----------



REIL Rws 14 and 32 **1**  
MIRL Rwy 14-32 **1**



CATEGORY	A	B	C	D
LPV DA	789-1 269 (300-1)			
LNAV/VNAV DA	919-1½ 399 (400-1½)			
LNAV MDA	980-1	460 (500-1)	980-1½ 460 (500-1½)	980-1½ 460 (500-1½)

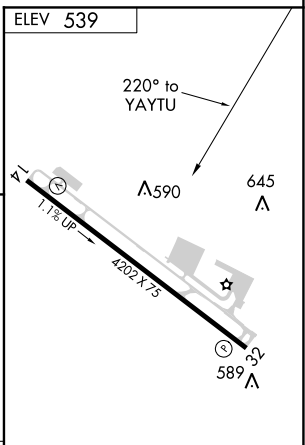
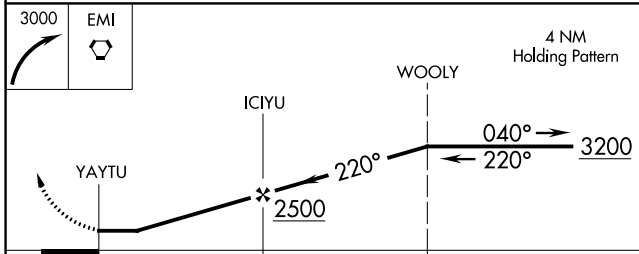
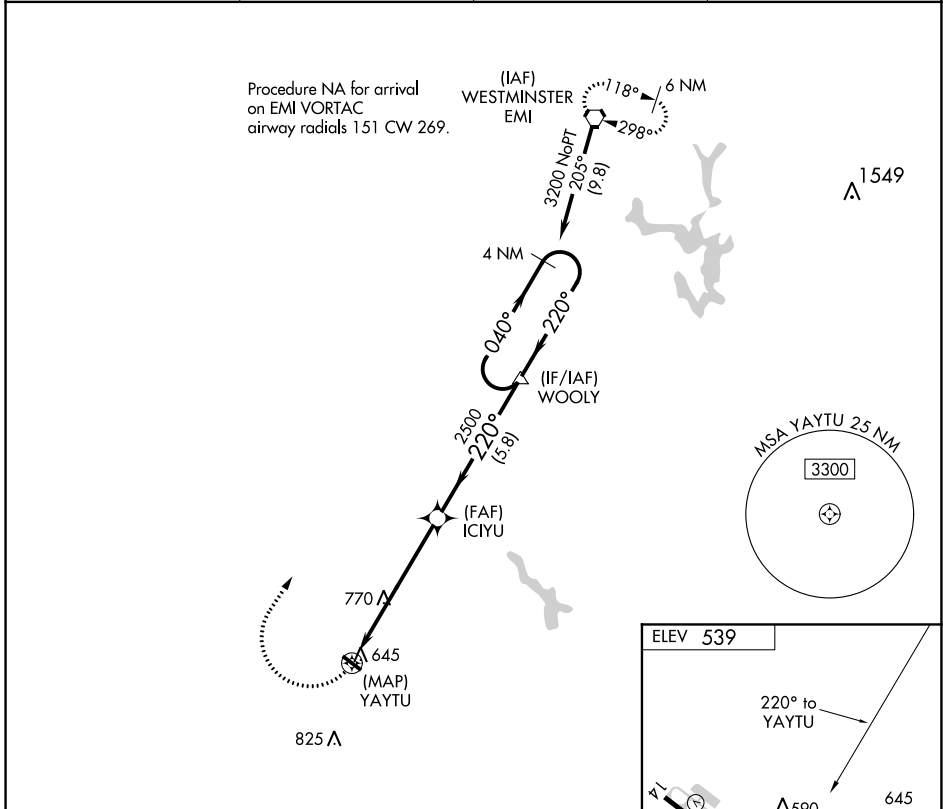
APP CRS <b>220°</b>	Rwy Idg TDZE Apt Elev	<b>N/A</b> <b>N/A</b> <b>539</b>
------------------------	-----------------------------	--

# RNAV (GPS)-A

MONTGOMERY COUNTY AIRPARK (GAI)

RNP APCH.		MISSED APPROACH: Climbing right turn to 3000 direct EMI VORTAC and hold.
<p>▼ When local altimeter setting is not received use Washington Dulles Intl altimeter setting and increase all MDA 80 feet and visibility Cat C ¼ SM.</p>		

AWOS-3PT <b>128.275</b>	POTOMAC APP CON <b>128.7 307.9</b>	CLNC DEL <b>121.6</b>	UNICOM <b>123.075 (CTAF) 0</b>
----------------------------	---------------------------------------	--------------------------	-----------------------------------



CATEGORY	A	B	C	D
CIRCLING	1080-1	541 (600-1)	1080-1½ 541 (600-1½)	1100-2 561 (600-2)

REIL Rwy 14 and 32 0

MIRL Rwy 14-32 0

NE-3, 22 APR 2021 to 20 MAY 2021

NE-3, 22 APR 2021 to 20 MAY 2021