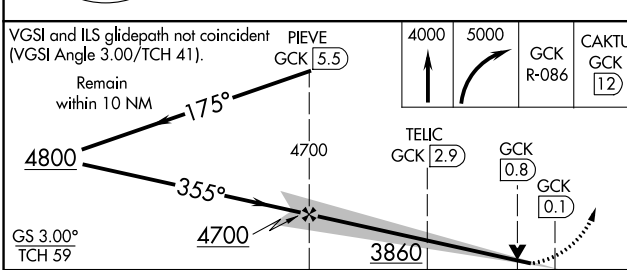
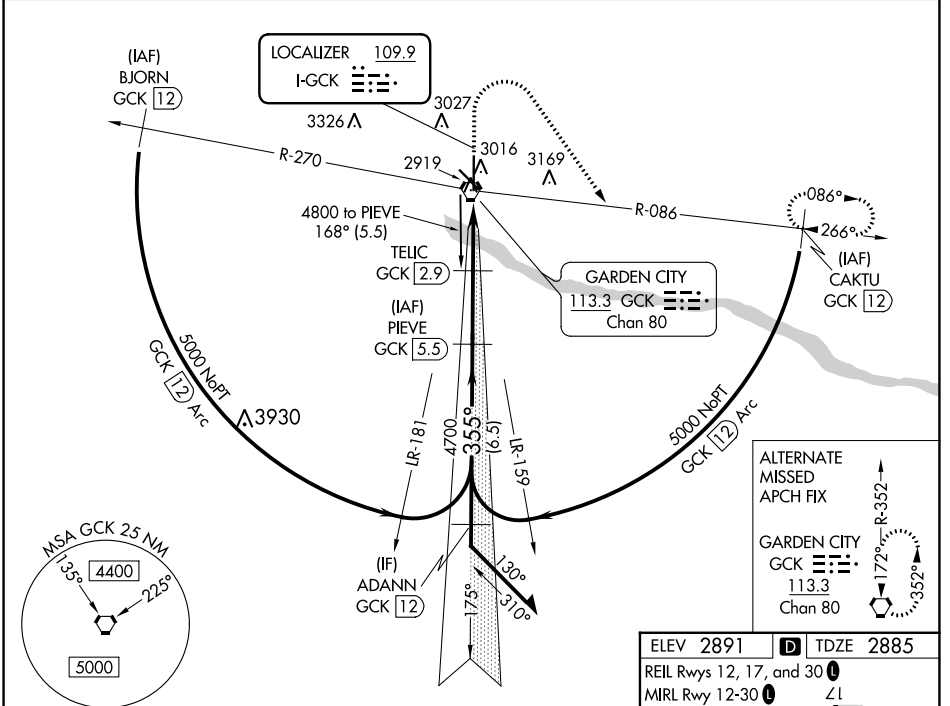


LOC I-GCK 109.9	APP CRS 355°	Rwy ldg 7299
		TDZE 2885
		Apt Elev 2891

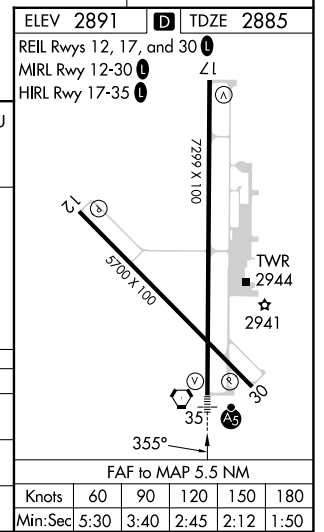
ILS or LOC RWY 35

GARDEN CITY RGNL (GCK)

DME required.		MALSR	MISSED APPROACH: Climb to 4000 then climbing right turn to 5000 on GCK VORTAC R-086 to CAKTU/GCK VORTAC 12 DME and hold.	
<p>▼ For inop ALS, increase S-LOC 35 Cats C/D visibility to 7/8 SM.</p> <p>▲</p>				
ASOS 121.325	KANSAS CITY CENTER 125.2 285.425	GARDEN CITY TOWER* 118.15 (CTAF) 0 254.4	GND CON 119.0 254.4	UNICOM 122.95



CATEGORY	A	B	C	D
S-ILS 35		3085-1/2	200 (200-1/2)	
S-LOC 35		3180-1/2	295 (300-1/2)	
CIRCLING	3320-1 429 (500-1)	3360-1 469 (500-1)	3480-1 1/2 589 (600-1 1/2)	3480-2 589 (600-2)



NC-2, 22 FEB 2024 to 21 MAR 2024

NC-2, 22 FEB 2024 to 21 MAR 2024

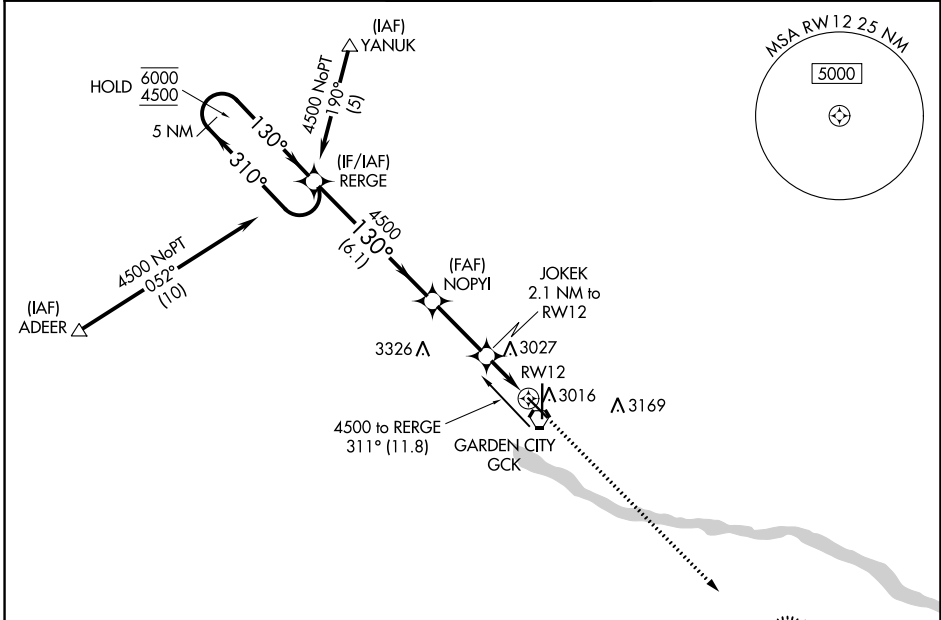
WAAS CH 77803 W12A	APP CRS 130°	Rwy ldg TDZE Apt Elev	5700 2891 2891
--	------------------------	-----------------------------	---

RNAV (GPS) RWY 12

GARDEN CITY RGNL (GCK)

RNP APCH - GPS.		MISSED APPROACH: Climb to 4600 direct ORECA and hold.	
<p>▼ For uncompensated Baro-VNAV systems, ▲ procedure NA below -20°C or above 54°C.</p>			

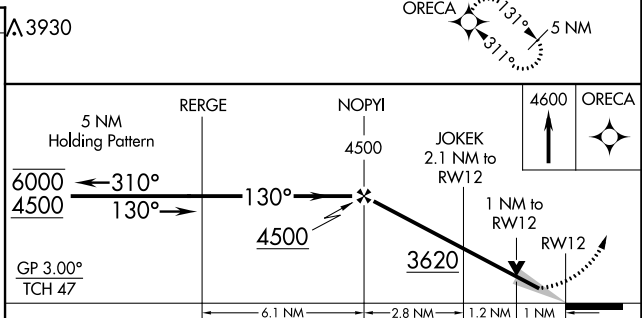
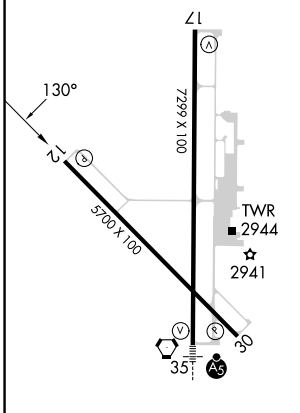
ASOS 121,325	KANSAS CITY CENTER 125.2 285.425	GARDEN CITY TOWER* 118.15 (CTAF) 0 254.4	GND CON 119.0 254.4	UNICOM 122.95
------------------------	--	--	-------------------------------	-------------------------



NC-2, 22 FEB 2024 to 21 MAR 2024

NC-2, 22 FEB 2024 to 21 MAR 2024

ELEV 2891	D TDZE 2891
-----------	--------------------



CATEGORY	A	B	C	D
LPV DA		3141-1	250 (300-1)	
LNAV/VNAV DA		3141-1	250 (300-1)	
LNAV MDA		3240-1	349 (400-1)	
C CIRCLING	3320-1 429 (500-1)	3360-1 469 (500-1)	3480-1½ 589 (600-1½)	3480-2 589 (600-2)

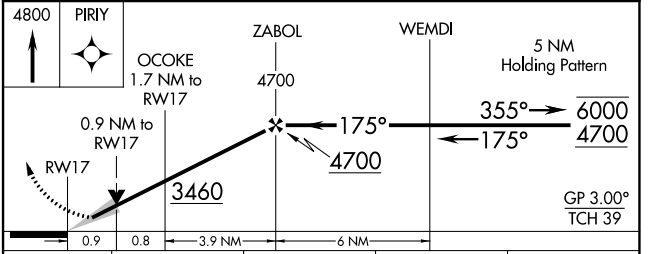
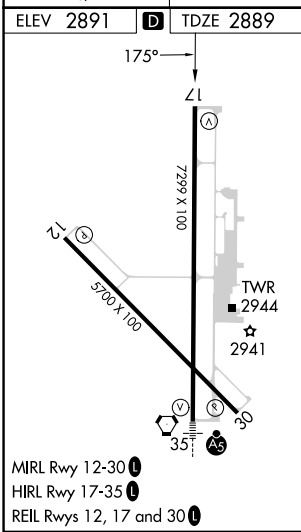
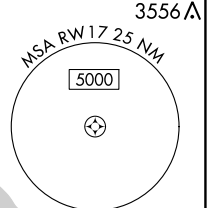
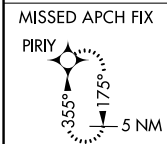
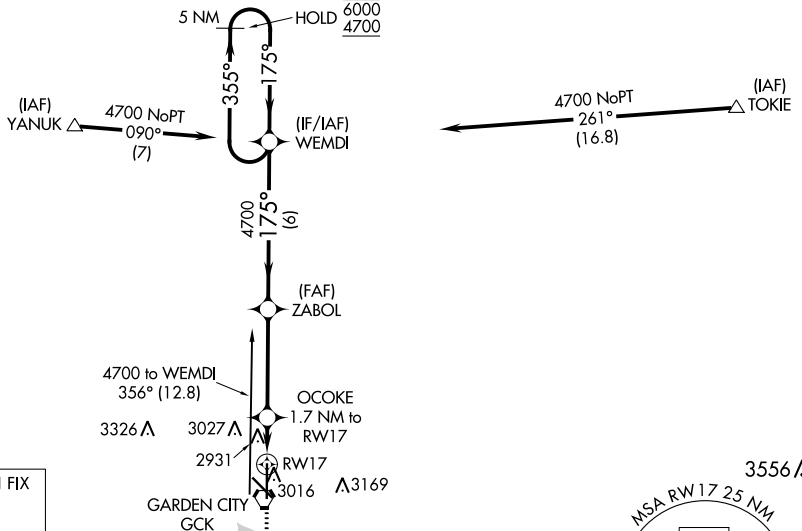
REIL Rwy 12, 17 and 30
MIRL Rwy 12-30
HIRL Rwy 17-35

WAAS CH 42803 W 17A	APP CRS 175°	Rwy Idg 7299 TDZE 2889 Apt Elev 2891
---	------------------------	---

RNAV (GPS) RWY 17

GARDEN CITY RGNL (GCK)

RNP APCH - GPS.		MISSED APPROACH: Climb to 4800 direct PIRIY and hold.	
ASOS 121.325	KANSAS CITY CENTER 125.2 285.425	GARDEN CITY TOWER* 118.15 (CTAF) 0 254.4	GND CON 119.0 254.4
		UNICOM 122.95	



CATEGORY	A	B	C	D
LPV DA	3089-3/4 200 (200-3/4)			
LNAV/VNAV DA	3139-3/4 250 (300-3/4)			
LNAV MDA	3200-1	311 (400-1)	3200-7/8	311 (400-7/8)
CIRCLING	3320-1 429 (500-1)	3360-1 469 (500-1)	3480-1 1/2 589 (600-1 1/2)	3480-2 589 (600-2)

NC-2, 22 FEB 2024 to 21 MAR 2024

NC-2, 22 FEB 2024 to 21 MAR 2024

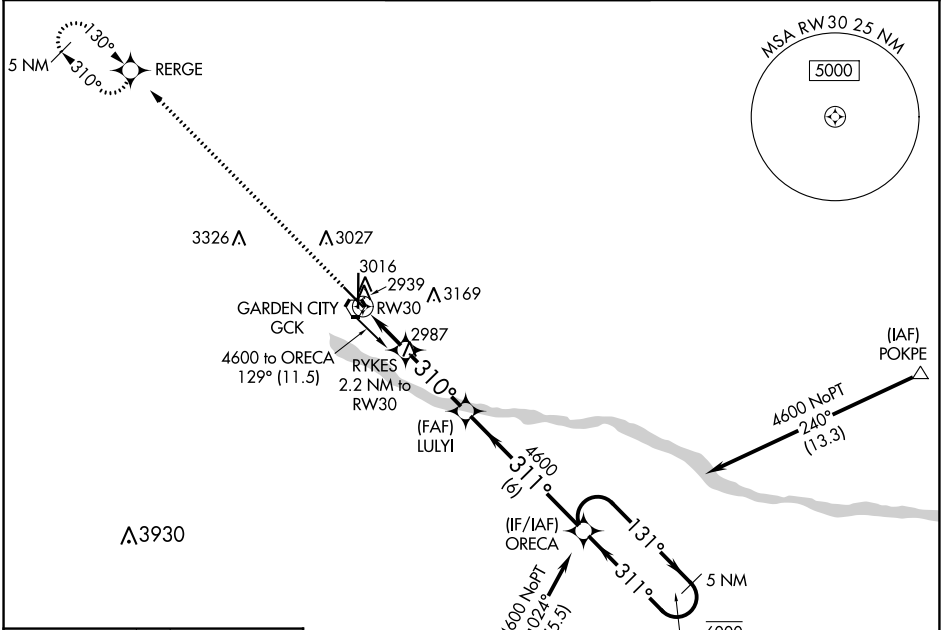
WAAS CH 86703 W30A	APP CRS 310°	Rwy ldg 5700 TDZE 2885 Apt Elev 2891
--	------------------------	---

RNAV (GPS) RWY 30

GARDEN CITY RGNL (GCK)

RNP APCH-GPS.		MISSED APPROACH: Climb to 4500 direct RERGE and hold.		
<p>▼ For uncompensated Baro-VNAV systems, LNAV/VNAV NA below -20°C or above 54°C.</p> <p>▲</p>				

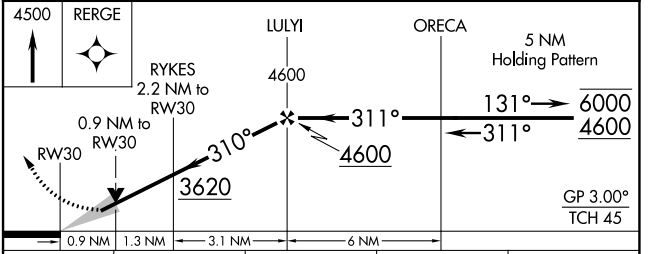
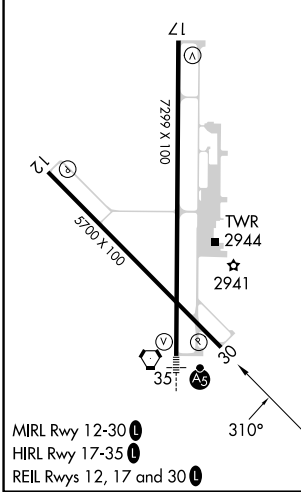
ASOS 121.325	KANSAS CITY CENTER 125.2 285.425	GARDEN CITY TOWER ★ 118.15 (CTAF) 0 254.4	GND CON 119.0 254.4	UNICOM 122.95
------------------------	--	---	-------------------------------	-------------------------



NC-2, 22 FEB 2024 to 21 MAR 2024

NC-2, 22 FEB 2024 to 21 MAR 2024

ELEV 2891	D	TDZE 2885
-----------	----------	-----------



CATEGORY	A	B	C	D
LPV DA		3135-1	250 (300-1)	
LNAV/VNAV DA		3137-1	252 (300-1)	
LNAV MDA		3200-1	315 (400-1)	
C CIRCLING	3320-1 429 (500-1)	3360-1 469 (500-1)	3480-1½ 589 (600-1½)	3480-2 589 (600-2)

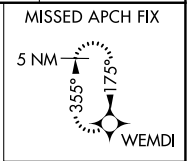
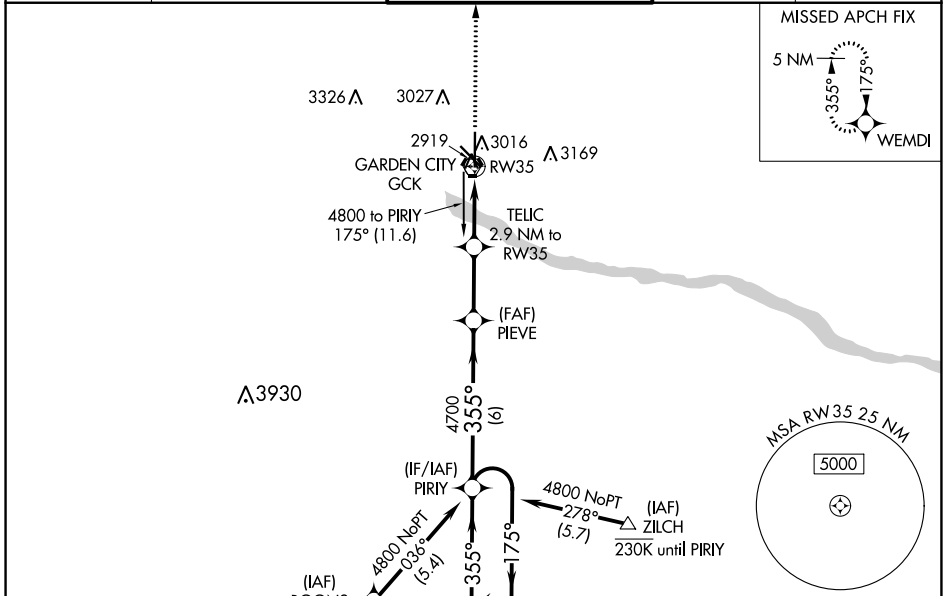
WAAS CH 63103 W35A	APP CRS 355°	Rwy Idg TDZE Apt Elev	7299 2885 2891
---------------------------------	------------------------	-----------------------------	---

RNAV (GPS) RWY 35

GARDEN CITY RGNL (GCK)

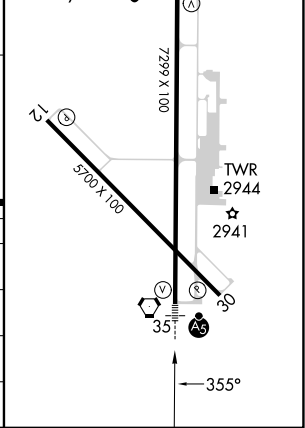
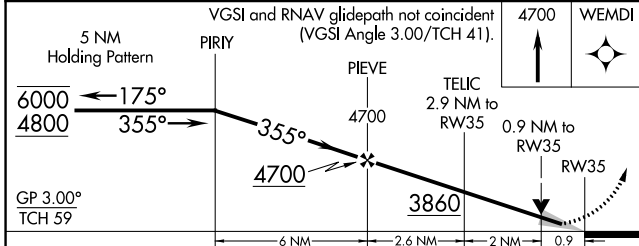
RNP APCH-GPS.	MALSR	MISSED APPROACH: Climb to 4700 direct WEMDI and hold.
<p>⚠ For uncompensated Baro-VNAV systems, LNAV/VNAV NA below -20°C or above 54°C. For inop ALS, increase LNAV/VNAV Cats C/D visibility to ¾ SM, and LNAV Cats C/D visibility to ½ SM.</p>		

ASOS 121.325	KANSAS CITY CENTER 125.2 285.425	GARDEN CITY TOWER * 118.15 (CTAF) 0 254.4	GND CON 119.0 254.4	UNICOM 122.95
------------------------	--	---	-------------------------------	-------------------------



ELEV 2891	D TDZE 2885
-----------	--------------------

REIL Rwy 12, 17 and 30 **Ⓛ**
 MIRL Rwy 12-30 **Ⓛ**
 HIRL Rwy 17-35 **Ⓛ**



CATEGORY	A	B	C	D
LPV DA		3085-½	200 (200-½)	
LNAV/VNAV DA		3135-½	250 (300-½)	
LNAV MDA		3180-½	295 (300-½)	
C CIRCLING	3320-1 429 (500-1)	3360-1 469 (500-1)	3480-1½ 589 (600-1½)	3480-2 589 (600-2)

NC-2, 22 FEB 2024 to 21 MAR 2024

NC-2, 22 FEB 2024 to 21 MAR 2024

VORTAC GCK 113.3 Chan 80	APP CRS 173°	Rwy Idg 7299 TDZE 2889 Apt Elev 2891
--	------------------------	---

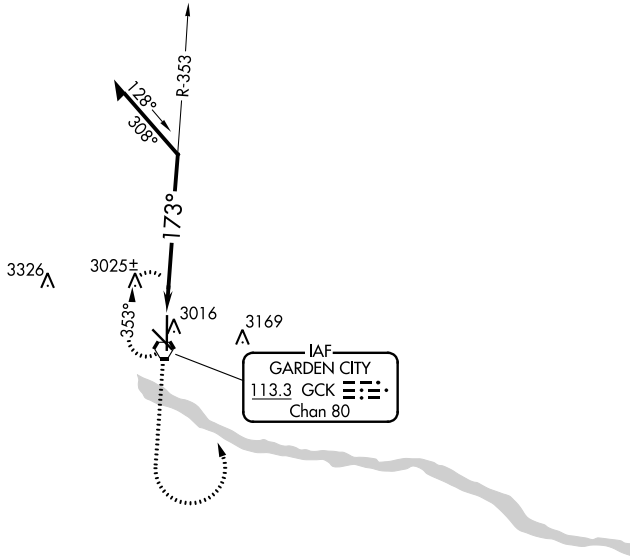
VOR RWY 17

GARDEN CITY RGNL (GCK)

▽ When local altimeter setting not received, use Dodge City Rgnl altimeter setting and increase all MDA 140 feet and Circling Cat C visibility ½ SM and Circling Cat D visibility ¼ SM. VDP NA when using Dodge City Rgnl altimeter setting.

MISSED APPROACH:
Climb to 4000, then climbing left turn to 4500 direct GCK VORTAC and hold.

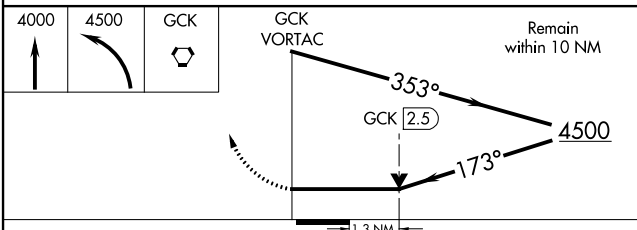
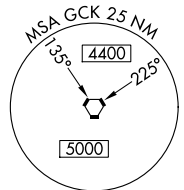
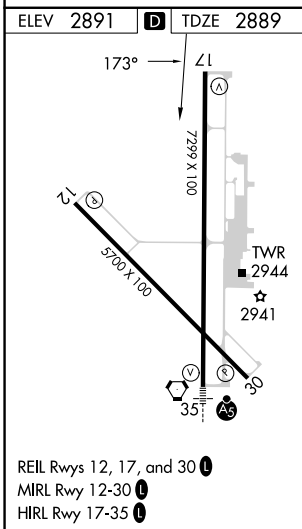
ASOS 121.325	KANSAS CITY CENTER 125.2 285.425	GARDEN CITY TOWER * 118.15 (CTAF) 0 254.4	GND CON 119.0 254.4	UNICOM 122.95
------------------------	--	---	-------------------------------	-------------------------



NC-2, 22 FEB 2024 to 21 MAR 2024

NC-2, 22 FEB 2024 to 21 MAR 2024

A3930

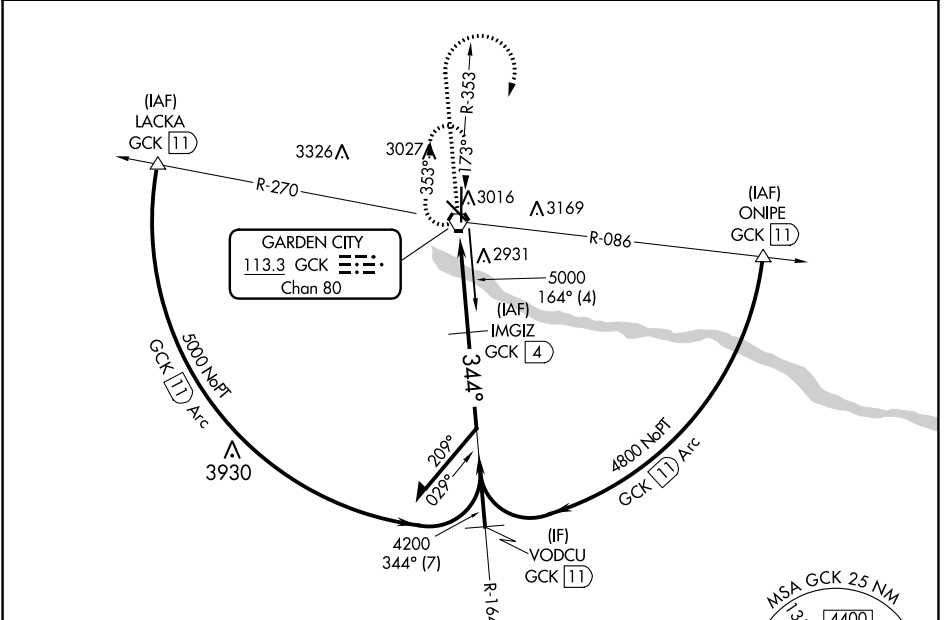


CATEGORY	A	B	C	D
S-17	3340-1	451 (500-1)	3340-1¼ 451 (500-1¼)	3340-1½ 451 (500-1½)
C CIRCLING	3340-1 449 (500-1)	3360-1 469 (500-1)	3480-1½ 589 (600-1½)	3480-2 589 (600-2)

VORTAC GCK 113.3 Chan 80	APP CRS 344°	Rwy Idg TDZE Apt Elev	7299 2885 2891
---------------------------------------	------------------------	-----------------------------	---

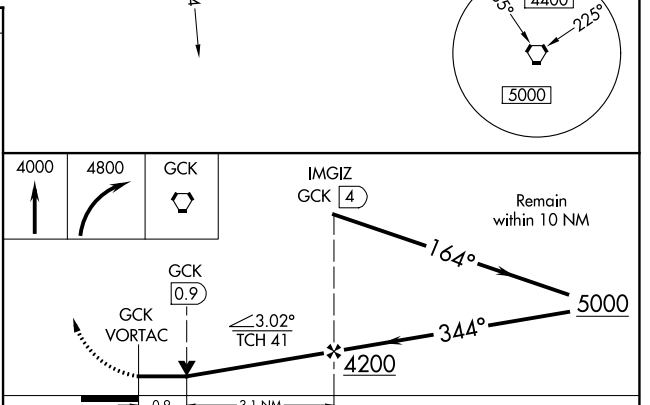
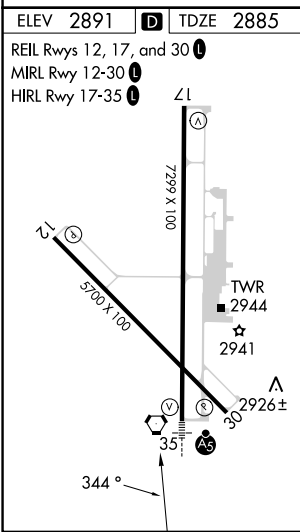
VOR RWY 35
GARDEN CITY RGNL (GCK)

DME required. ▼ For inop ALS, increase S-35 Cat C visibility to ¾ SM. ▲ Inop table does not apply to S-35 Cat D.		MALS R AS	MISSED APPROACH: Climb to 4000 then climbing right turn to 4800 direct GCK VORTAC and hold.	
ASOS 121.325	KANSAS CITY CENTER 125.2 285.425	GARDEN CITY TOWER ★ 118.15 (CTAF) 0 254.4	GND CON 119.0 254.4	UNICOM 122.95



NC-2, 22 FEB 2024 to 21 MAR 2024

NC-2, 22 FEB 2024 to 21 MAR 2024



CATEGORY	A	B	C	D
S-35	3200-½ 315 (400-½)		3200-¾ 315 (400-¾)	3200-1 315 (400-1)
CIRCLING	3320-1 429 (500-1)	3360-1 469 (500-1)	3480-1½ 589 (600-1½)	3480-2 589 (600-2)

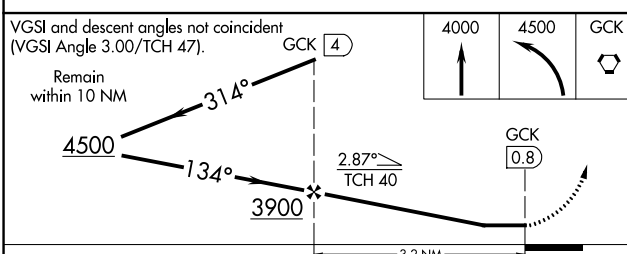
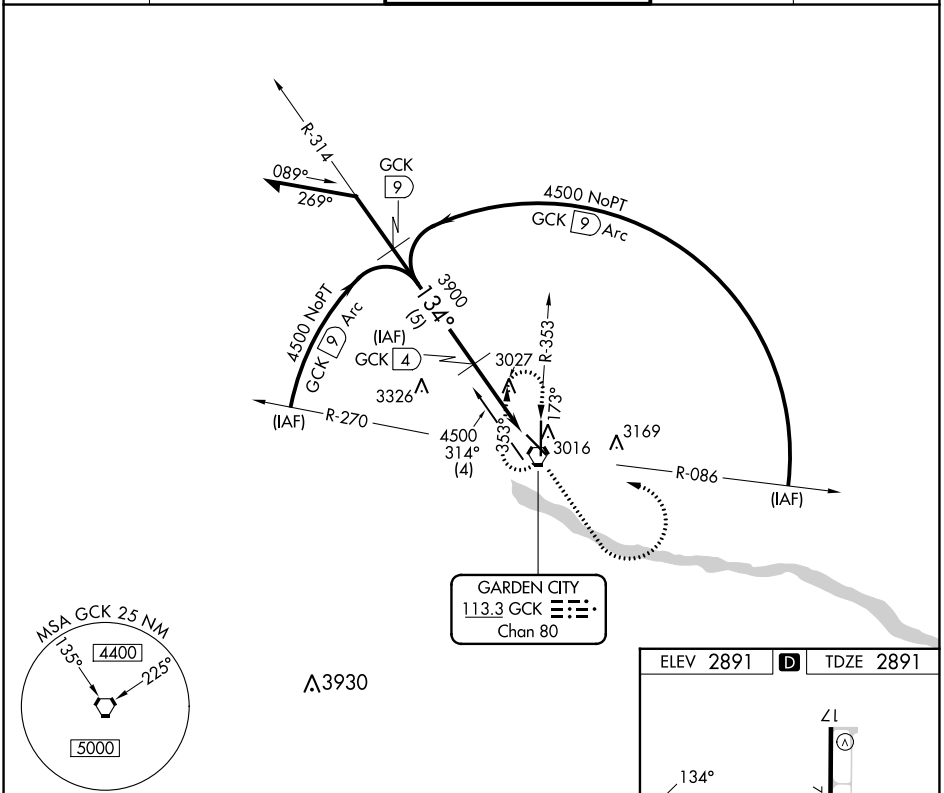
VORTAC GCK 113.3 Chan 80	APP CRS 134°	Rwy Idg 5700 TDZE 2891 Apt Elev 2891
--	------------------------	---

VOR/DME RWY 12

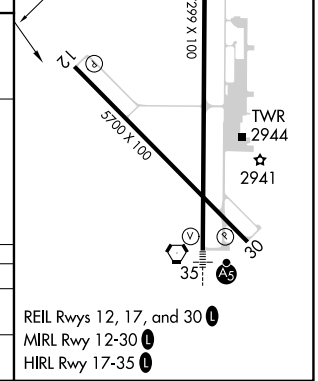
GARDEN CITY RGNL (GCK)

▽ MISSED APPROACH: Climb to 4000 then climbing left turn to 4500 direct GCK VORTAC and hold.

ASOS 121.325	KANSAS CITY CENTER 125.2 285.425	GARDEN CITY TOWER * 118.15 (CTAF) 0 254.4	GND CON 119.0 254.4	UNICOM 122.95
------------------------	--	---	-------------------------------	-------------------------



CATEGORY	A	B	C	D
S-12	3280-1	389 (400-1)		3280-1¼ 389 (400-1¼)
C CIRCLING	3320-1 429 (500-1)	3360-1 469 (500-1)	3480-1½ 589 (600-1½)	3480-2 589 (600-2)



NC-2, 22 FEB 2024 to 21 MAR 2024

NC-2, 22 FEB 2024 to 21 MAR 2024

VORTAC GCK 113.3 Chan 80	APP CRS 173°	Rwy Idg 7299 TDZE 2889 Apt Elev 2891
--	------------------------	---

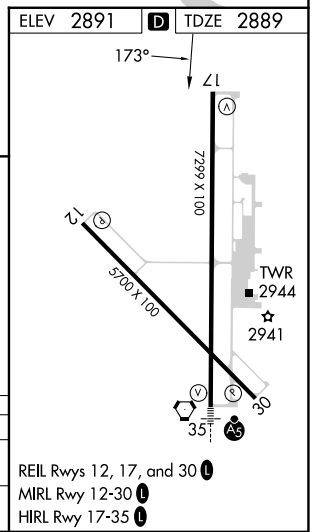
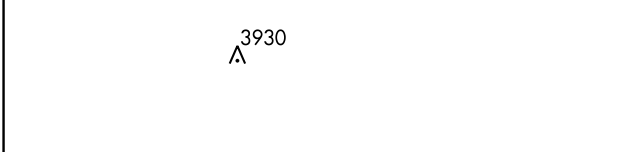
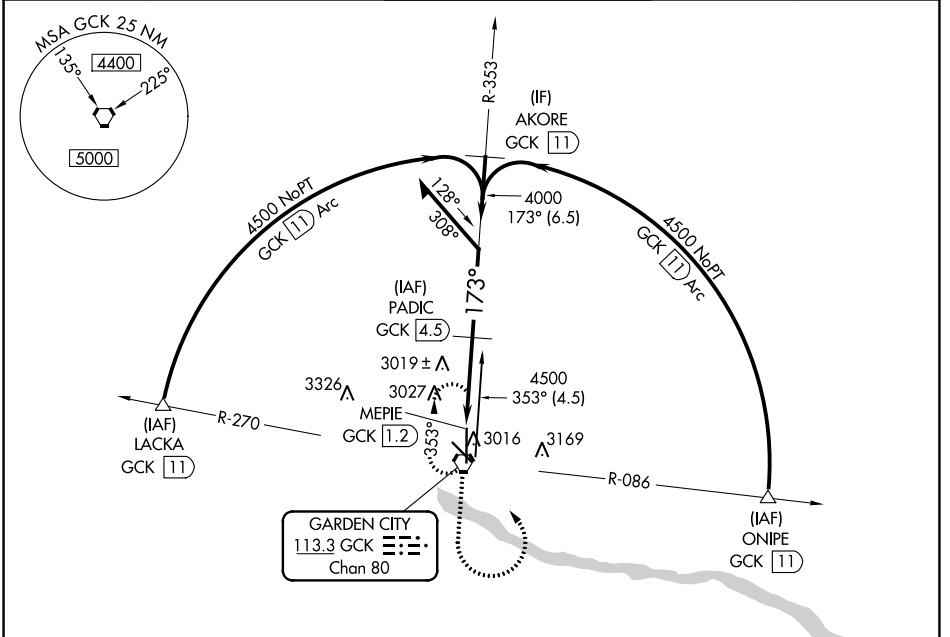
VOR/DME RWY 17

GARDEN CITY RGNL (GCK)

⚠ When local altimeter setting not received, use Dodge City Rgnl altimeter setting and increase all MDA 140 feet and Circling Cat C visibility ½ SM and Circling Cat D visibility ¼ SM.
⚠ VDP NA when using Dodge City altimeter setting.

MISSED APPROACH:
 Climb to 4500, then left turn direct GCK VORTAC and hold.

ASOS 121.325	KANSAS CITY CENTER 125.2 285.425	GARDEN CITY TOWER ★ 118.15 (CTAF) 254.4	GND CON 119.0 254.4	UNICOM 122.95
------------------------	--	---	-------------------------------	-------------------------



4500	GCK	PADIC GCK 4.5	Remain within 10 NM
MEPIE GCK 1.2	GCK 2.3	353°	4500
1.1 NM	2.2 NM	173°	4000
3.07° TCH 39			

CATEGORY	A	B	C	D
S-17		3280-1 391 (400-1)		3280-1½ 391 (400-1½)
C CIRCLING	3320-1 429 (500-1)	3360-1 469 (500-1)	3480-1½ 589 (600-1½)	3480-2 589 (600-2)

NC-2, 22 FEB 2024 to 21 MAR 2024

NC-2, 22 FEB 2024 to 21 MAR 2024

VORTAC GCK 113.3 Chan 80	APP CRS 286°	Rwy Idg TDZE Apt Elev	5700 2885 2891
--	------------------------	-----------------------------	---

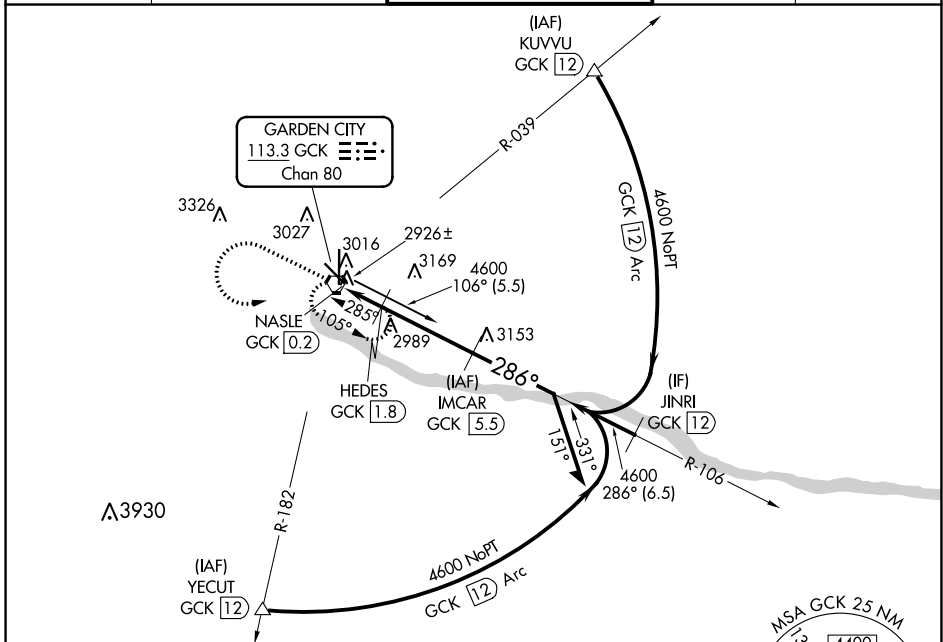
VOR/DME RWY 30

GARDEN CITY RGNL (GCK)

⚠ When local altimeter setting not received, use Dodge City Rgnl altimeter setting and increase all MDA 140 feet and Circling Cat C visibility ½ SM and Circling Cat D visibility ¼ SM.

MISSED APPROACH:
Climb to 4000 then climbing left turn to 4600 direct GCK VORTAC and hold.

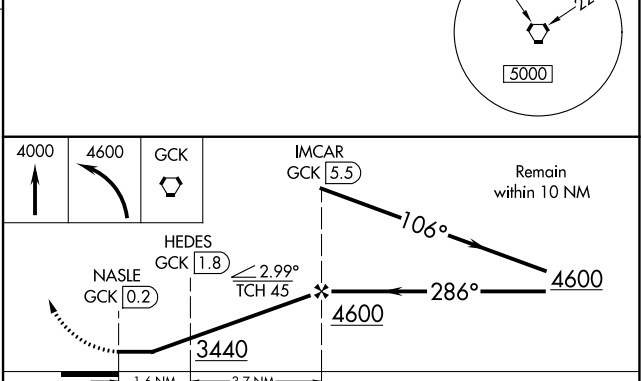
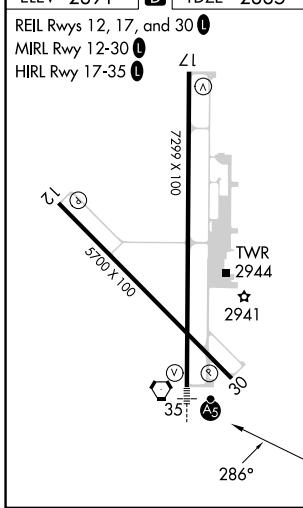
ASOS 121.325	KANSAS CITY CENTER 125.2 285.425	GARDEN CITY TOWER ★ 118.15 (CTAF) 0 254.4	GND CON 119.0 254.4	UNICOM 122.95
------------------------	--	---	-------------------------------	-------------------------



NC-2, 22 FEB 2024 to 21 MAR 2024

NC-2, 22 FEB 2024 to 21 MAR 2024

ELEV 2891	D	TDZE 2885
-----------	----------	-----------



CATEGORY	A	B	C	D
S-30	3240-1 355 (400-1)		3240-1¼ 355 (400-1¼)	
C CIRCLING	3320-1 429 (500-1)	3360-1 469 (500-1)	3480-1½ 589 (600-1½)	3480-2 589 (600-2)