

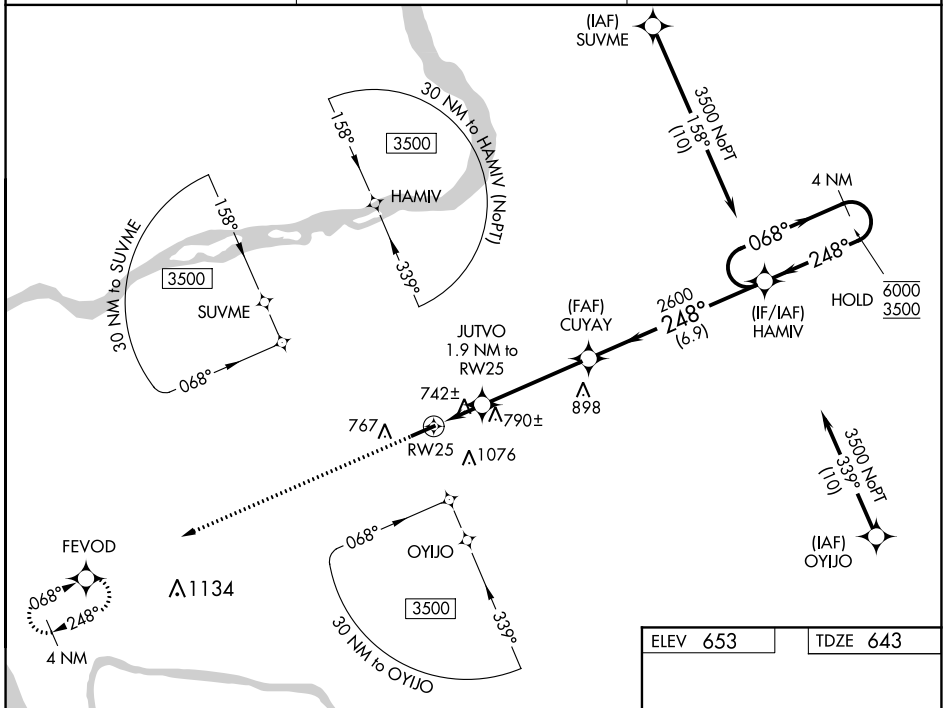
WAAS CH 86631 W25A	APP CRS 248°	Rwy Idg TDZE Apt Elev	5001 643 653
--	------------------------	-----------------------------	---

RNAV (GPS) RWY 25

MARION-CRITTENDEN COUNTY JAMES C JOHNSON RGNL (GDA)

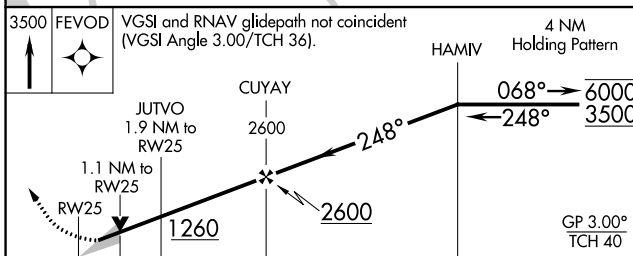
RNP APCH - GPS.	For uncompensated Baro-VNAV systems, LNAV/VNAV NA below -16°C or above 54°C.	MISSED APPROACH: Climb to 3500 direct FEVOD and hold.
-----------------	--	---

AWOS-3P 118.15	MEMPHIS CENTER 133.65 292.15	CTAF 122.9
--------------------------	--	----------------------



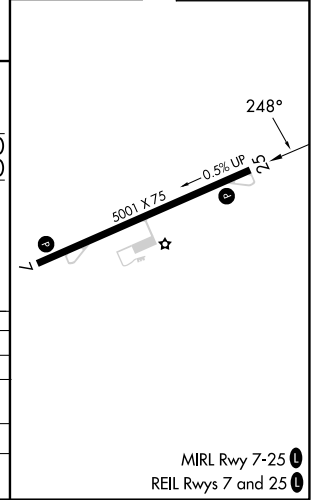
SE-1, 22 FEB 2024 to 21 MAR 2024

SE-1, 22 FEB 2024 to 21 MAR 2024



ELEV 653	TDZE 643
----------	----------

CATEGORY	A	B	C	D
LPV DA		893-1	250 (300-1)	
LNAV/VNAV DA		945-1	302 (300-1)	
LNAV MDA		1000-1	357 (400-1)	
CIRCLING	1160-1 507 (600-1)	1360-1 707 (800-1)	1380-2 727 (800-2)	1380-2 1/4 727 (800-2 1/4)



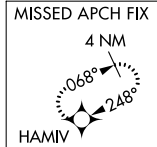
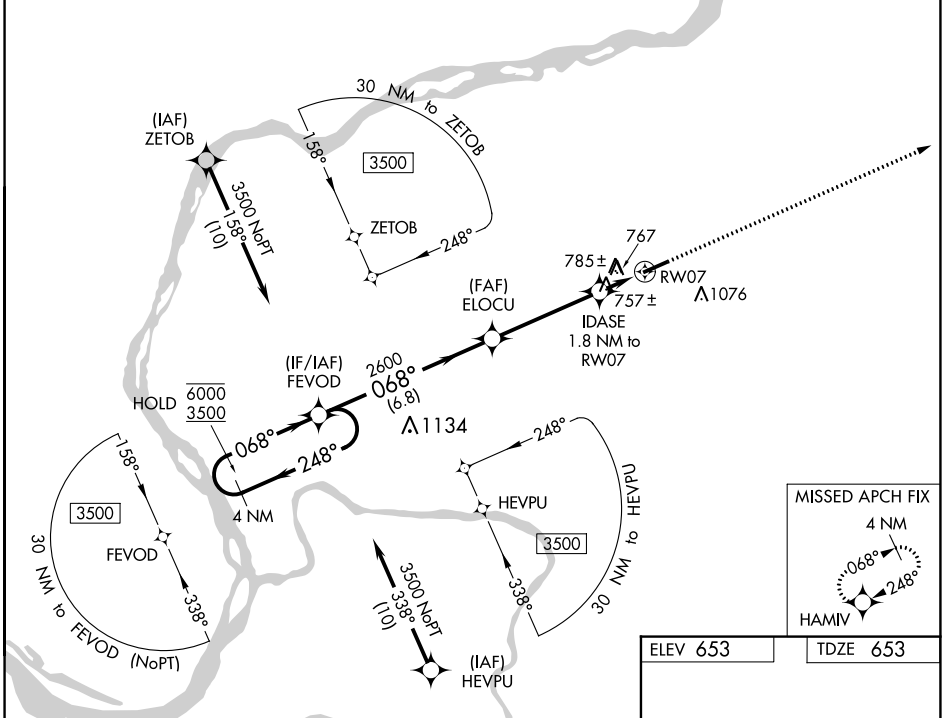
WAAS CH 90531 W07A	APP CRS 068°	Rwy Idg TDZE Apt Elev	5001 653 653
--	------------------------	-----------------------------	---

RNAV (GPS) RWY 7

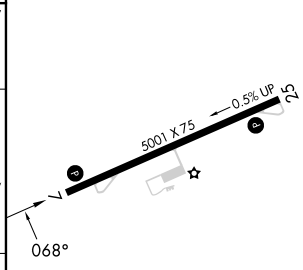
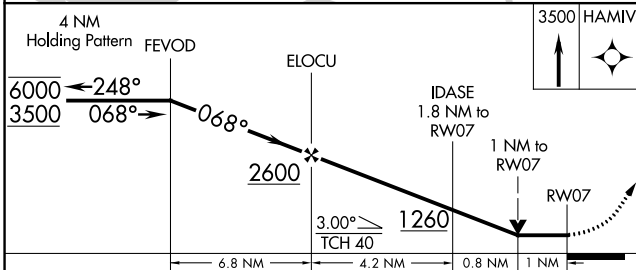
MARION-CRITTENDEN COUNTY JAMES C JOHNSON RGNL (GDA)

RNP APCH - GPS.		MISSED APPROACH: Climb to 3500 direct HAMIV and hold.
<p>▼ ▲ Rwy 7 helicopter visibility reduction below 3/4 SM NA.</p>		

AWOS-3P 118.15	MEMPHIS CENTER 133.65 292.15	CTAF 122.9
--------------------------	--	----------------------



ELEV 653	TDZE 653
----------	----------



CATEGORY	A	B	C	D
LP MDA	1020-1		367 (400-1)	
LNAV MDA	1040-1	387 (400-1)	1040-1 1/8	387 (400-1 1/8)
C CIRCLING	1160-1 507 (600-1)	1360-1 707 (800-1)	1380-2 727 (800-2)	1380-2 1/4 727 (800-2 1/4)

MIRL Rwy 7-25 **1**
REIL Rwys 7 and 25 **1**

SE-1, 22 FEB 2024 to 21 MAR 2024

SE-1, 22 FEB 2024 to 21 MAR 2024