

APP CRS	Rwy Idg	<b>4002</b>
<b>021°</b>	TDZE	<b>765</b>
	Apt Elev	<b>765</b>

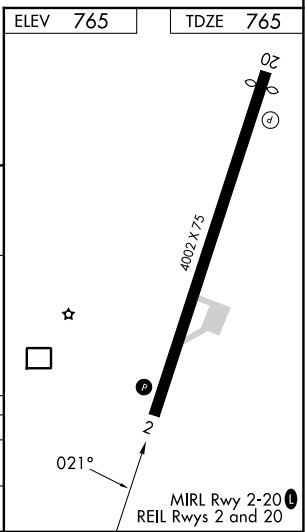
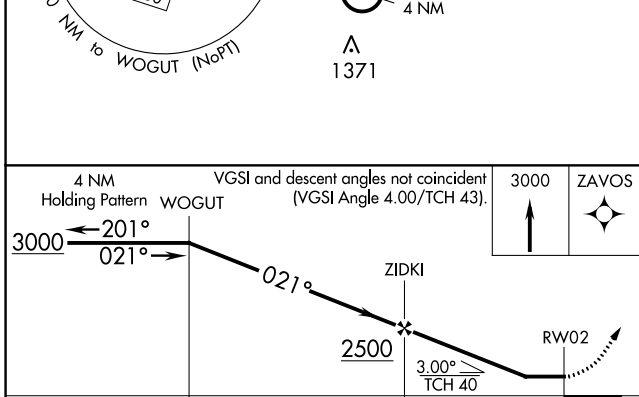
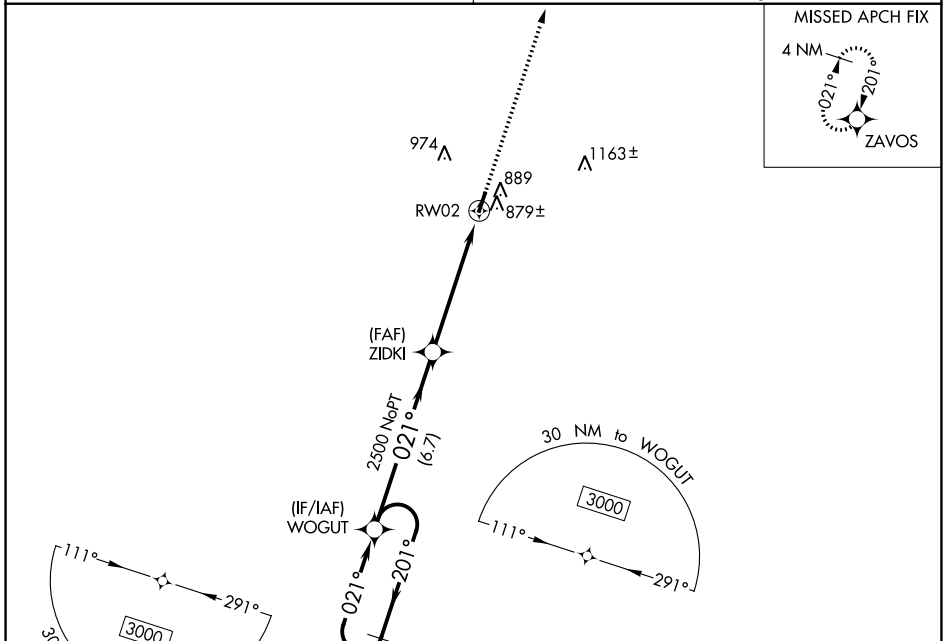
# RNAV (GPS) RWY 2

CENTERVILLE MUNI (GHM)

**NA** Obtain local altimeter setting on CTAF, when not received, use Columbia/Mount Pleasant altimeter setting and increase all MDA 80 feet. Increase LNAV Cats C and D visibility 3/8 mile and Circling Cat D 1/4 mile. DME/DME RNP-0.3 NA. Procedure NA at night. Helicopter visibility reduction below 1 SM NA.

**MISSED APPROACH:** Climb to 3000 direct ZAVOS and hold.

MEMPHIS CENTER **125.85 379.25** UNICOM **122.8 (CTAF) 0**



CATEGORY	A	B	C	D
LNAV MDA	1140-1 375 (400-1)			
<b>C</b> CIRCLING	1260-1	495 (500-1)	1280-1½ 515 (600-1½)	1520-2½ 755 (800-2½)

SE-1, 22 FEB 2024 to 21 MAR 2024

SE-1, 22 FEB 2024 to 21 MAR 2024

WAAS CH <b>48838</b> <b>W20A</b>	APP CRS <b>201°</b>	Rwy Idg <b>3752</b> TDZE <b>765</b> Apt Elev <b>765</b>
--	------------------------	--

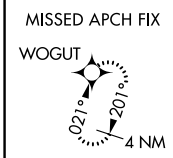
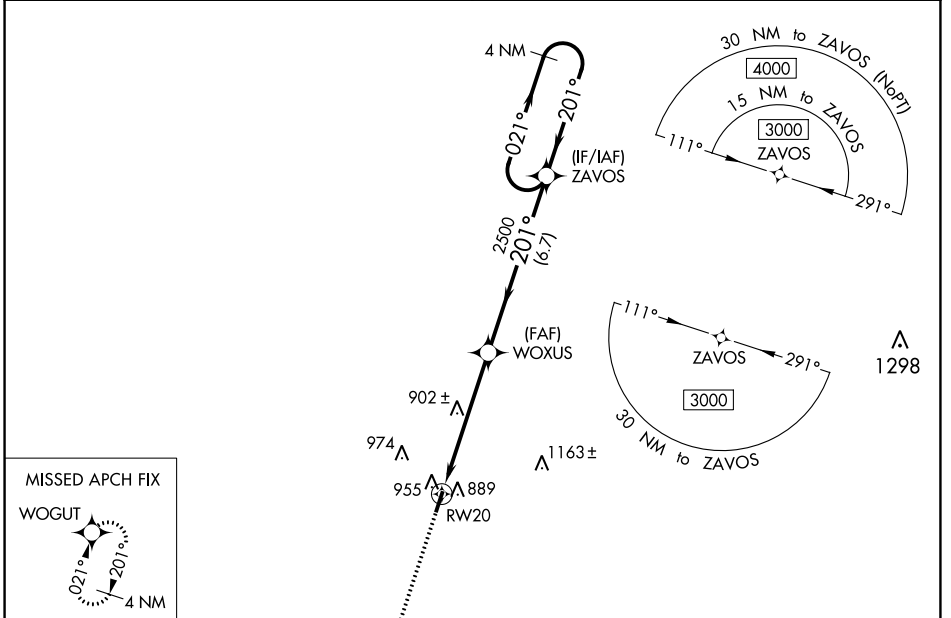
# RNAV (GPS) RWY 20

CENTERVILLE MUNI (GHM)

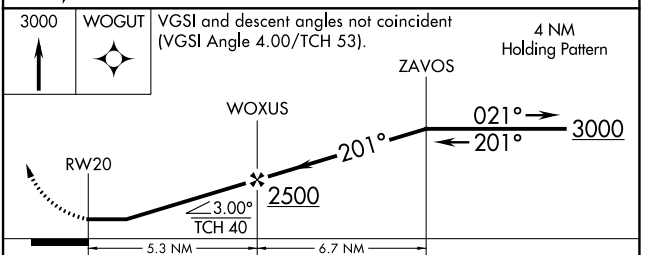
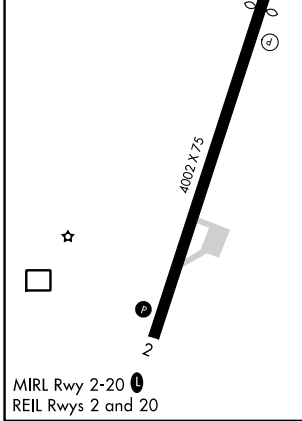
**▽** Obtain local altimeter setting on CTAF, when not received, use Columbia/Mount Pleasant altimeter setting and increase all MDA 80 feet. Increase LP Cats C and D visibility ¼ mile; LNAV Cats C and D ½ mile; Circling Cat D ¼ mile. DME/DME RNP-0.3 NA.  
**△ NA** Procedure NA at night. Helicopter visibility reduction below 1 SM NA.

**MISSED APPROACH:** Climb to 3000 direct WOGUT and hold.

MEMPHIS CENTER <b>125.85 379.25</b>	UNICOM <b>122.8 (CTAF) 0</b>
--	---------------------------------



ELEV <b>765</b>	TDZE <b>765</b>
-----------------	-----------------



CATEGORY	A	B	C	D
LP MDA	1160-1	395 (400-1)	1160-1½	395 (400-1½)
LNAV MDA	1220-1	455 (500-1)	1220-1¾	455 (500-1¾)
<b>CIRCLING</b>	1260-1	495 (500-1)	1280-1½ 515 (600-1½)	1520-2½ 755 (800-2½)

SE-1, 22 FEB 2024 to 21 MAR 2024

SE-1, 22 FEB 2024 to 21 MAR 2024