

WAAS CH <b>86502</b> <b>W11A</b>	APP CRS <b>107°</b>	Rwy Idg TDZE <b>145</b> Apt Elev <b>145</b>	<b>4001</b>
--	------------------------	---	-------------

# RNAV (GPS) RWY 11

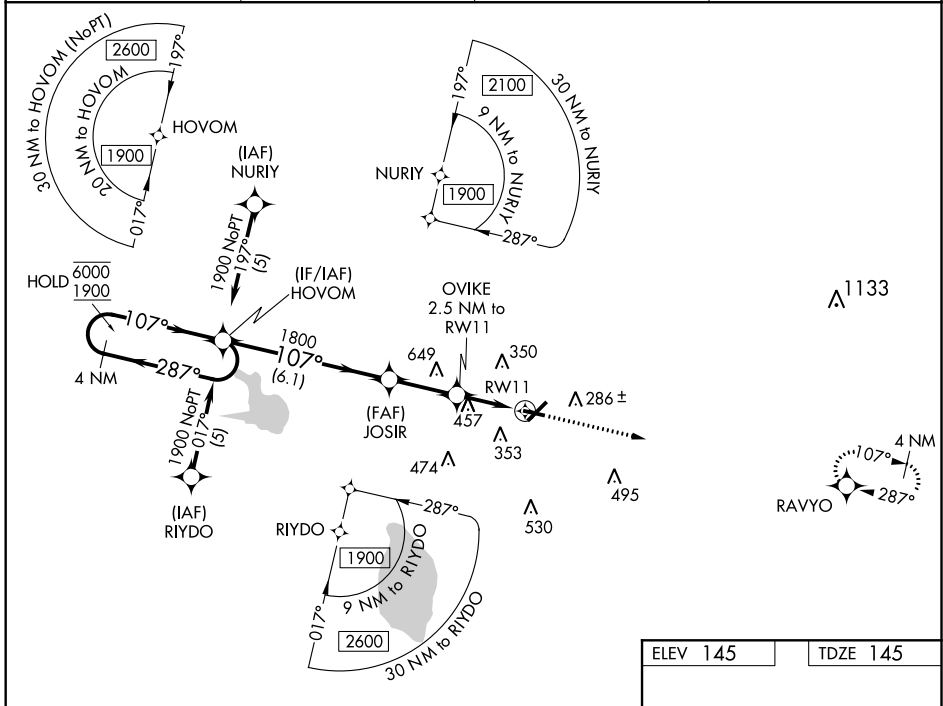
WINTER HAVEN RGNL (GIF')

RNP APCH-GPS.

**⚠** Rwy 11 helicopter visibility reduction below 1 SM NA. For uncompensated Baro-VNAV systems, LNAV/VNAV NA below -15°C or above 54°C. Straight-in and Circling Rwy 11 NA at night. When local altimeter setting not received, use Barow altimeter setting and increase all DA/MDAs 20 feet. Baro-VNAV NA when using Barow altimeter setting.

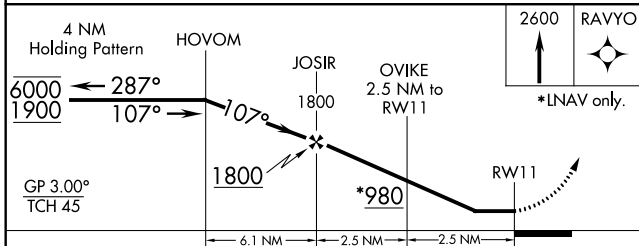
MISSED APPROACH:  
Climb to 2600 direct RAVYO and hold.

ASOS <b>133.675</b>	TAMPA APP CON <b>120.65 290.3</b>	CLNC DEL (GCO) <b>121.725</b>	UNICOM <b>123.05 (CTAF) ①</b>
------------------------	--------------------------------------	----------------------------------	----------------------------------



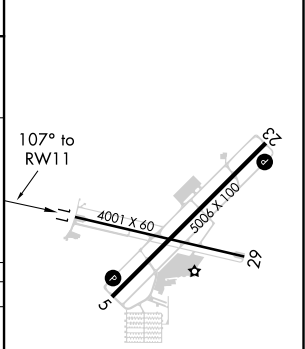
SE-3, 09 SEP 2021 to 07 OCT 2021

SE-3, 09 SEP 2021 to 07 OCT 2021



ELEV 145	TDZE 145
----------	----------

CATEGORY	A	B	C	D
LPV DA	395-1 250 (300-1)			
LNAV/VNAV DA	647-1¾ 502 (600-1¾)			
LNAV MDA	760-1 615 (700-1)	760-1¾ 615 (700-1¾)	760-2 615 (700-2)	760-2 615 (700-2)
CIRCLING	760-1¾ 615 (700-1¾)	820-2 675 (700-2)	960-2¾ 815 (900-2¾)	960-2¾ 815 (900-2¾)



REIL Rwy 5 and 23  
REIL Rwy 11 and 29 ①  
MIRL Rwy 5-23 and 11-29 ①

# RNAV (GPS) RWY 5

WINTER HAVEN RGNL (GIF')

APP CRS	Rwy Idg	<b>5006</b>
<b>049°</b>	TDZE	<b>145</b>
	Apt Elev	<b>145</b>

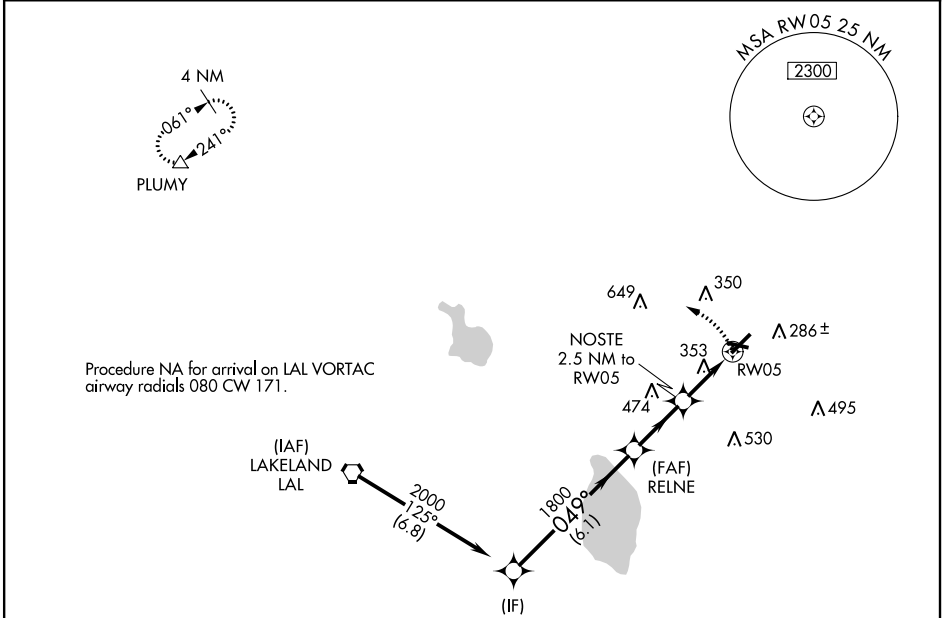
RNP APCH-GPS.

▼ Helicopter visibility reduction below  $\frac{3}{4}$  SM NA. When local altimeter setting not received, use Bartow altimeter setting and increase all MDA 20 feet, increase LNAV Cat C/D visibility  $\frac{1}{8}$  SM. VDP NA when using Bartow altimeter setting. Circling Rwy 11 NA at night.

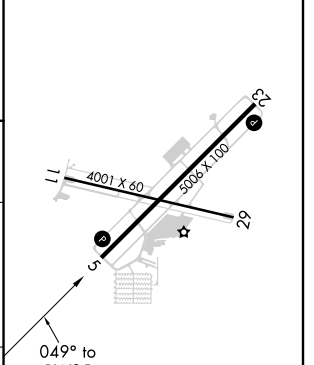
▲

MISSED APPROACH: Climbing left turn to 2000 direct PLUMY and hold.

ASOS <b>133.675</b>	TAMPA APP CON <b>120.65 290.3</b>	CLNC DEL (GCO) <b>121.725</b>	UNICOM <b>123.05 (CTAF) 0</b>
------------------------	--------------------------------------	----------------------------------	----------------------------------



ELEV 145	TDZE 145
----------	----------



CATEGORY	A	B	C	D
LNAV MDA	660-1	515 (600-1)	660-1 $\frac{3}{8}$	515 (600-1 $\frac{3}{8}$ )
CIRCLING	720-1	575 (600-1)	820-2 675 (700-2)	960-2 $\frac{3}{4}$ 815 (900-2 $\frac{3}{4}$ )

REIL Rwy 5 and 23  
REIL Rwy 11 and 29  
MIRL Rwy 5-23 and 11-29

SE-3, 09 SEP 2021 to 07 OCT 2021

SE-3, 09 SEP 2021 to 07 OCT 2021

VORTAC LAL <b>116.0</b> Chan <b>107</b>	APP CRS <b>071°</b>	Rwy Idg TDZE Apt Elev	<b>N/A</b> <b>N/A</b> <b>145</b>
---	------------------------	-----------------------------	--

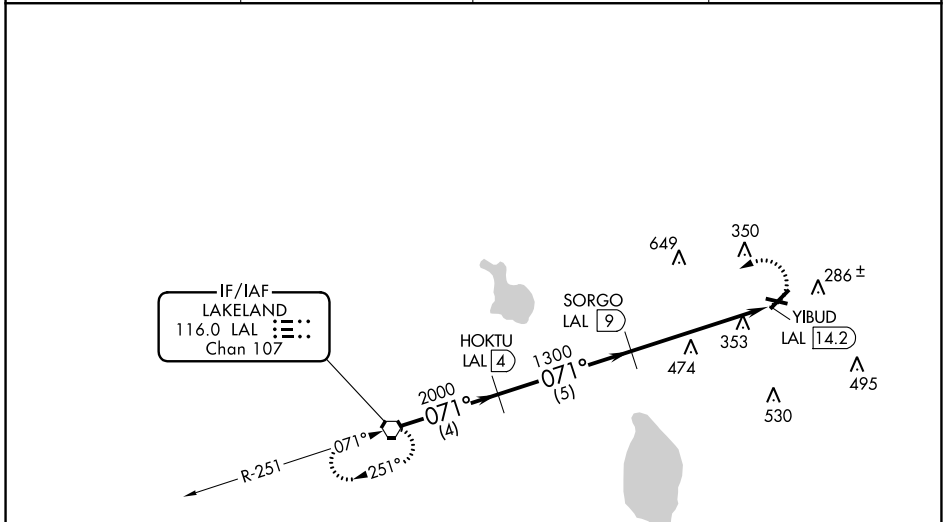
**VOR-A**  
WINTER HAVEN RGNL (GIF')

DME required.

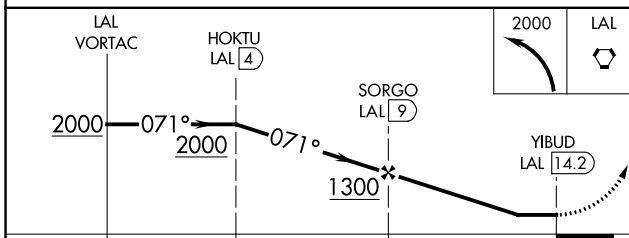
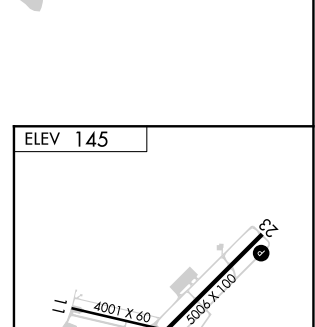
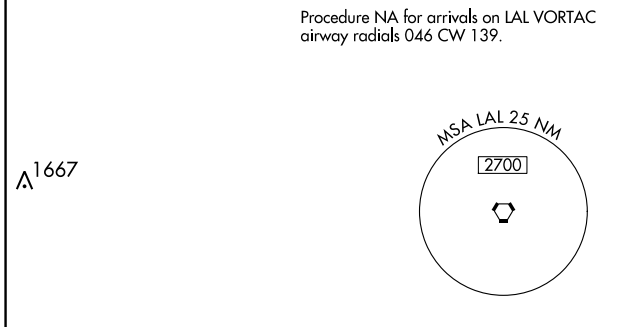
▼ When local altimeter setting not received, use Bartow altimeter  
▲ setting and increase all MDA 20 feet. Circling Rwy 11 NA at night.

MISSED APPROACH: Climbing left turn to 2000 direct LAL VORTAC and hold.

ASOS <b>133.675</b>	TAMPA APP CON <b>120.65 290.3</b>	CLNC DEL (GCO) <b>121.725</b>	UNICOM <b>123.05 (CTAF) 0</b>
------------------------	--------------------------------------	----------------------------------	----------------------------------



Procedure NA for arrivals on LAL VORTAC  
airway radials 046 CW 139.



CATEGORY	A	B	C	D
CIRCLING	780-1	635 (700-1)	820-2 675 (700-2)	960-2¾ 815 (900-2¾)

REIL Rwy 5 and 23  
REIL Rwy 11 and 29  
MRL Rwy 5-23 and 11-29

SE-3, 09 SEP 2021 to 07 OCT 2021

SE-3, 09 SEP 2021 to 07 OCT 2021