

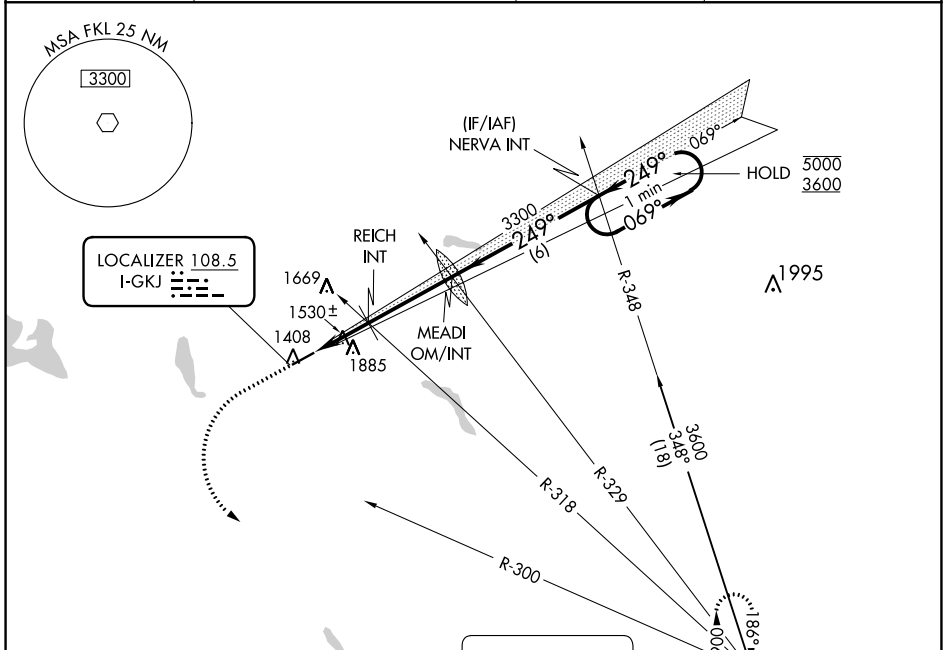
LOC I-GKJ <b>108.5</b>	APP CRS <b>249°</b>	Rwy Idg TDZE Apt Elev	<b>5001</b> <b>1399</b> <b>1399</b>
---------------------------	------------------------	-----------------------------	-------------------------------------------

# LOC RWY 25

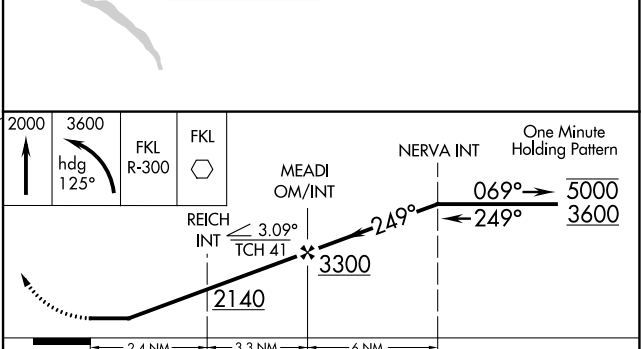
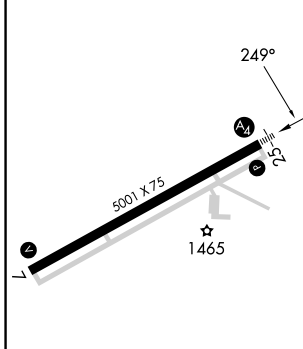
PORT MEADVILLE (GKJ)

RADAR required.		MALS	MISSED APPROACH: Climb to 2000 then climbing left turn to 3600 on heading 125° and FKL VOR R-300 to FKL VOR and hold.
<p>▼ Inop table does not apply.</p> <p>▲ Rwy 25 helicopter visibility reduction below ¾ SM NA.</p>			

ASOS <b>121.425</b>	YOUNGSTOWN APP CON* <b>133.95 322.3</b>	CLNC DEL <b>124.95</b>	UNICOM <b>123.0 (CTAF)</b>
------------------------	--------------------------------------------	---------------------------	-------------------------------



ELEV 1399	TDZE 1399
-----------	-----------



MIRL Rwy 7-25	FAF to MAP 5.7 NM	2000	3600	FKL R-300	FKL	MEADI OM/INT	NERVA INT	One Minute Holding Pattern
		↑	hdg 125°			REICH INT	3300	5000 3600
						3.09°	249°	069° →
						TCH 41	2140	← 249°
CATEGORY		A	B	C	D			
S-LOC 25		1780-1	381 (400-1)	1780-1 7/8	381 (400-1 7/8)			
CIRCLING		1900-1	2240-1 1/4	2240-2 1/2	2240-2 3/4			
		501 (600-1)	841 (900-1 1/4)	841 (900-2 1/2)	841 (900-2 3/4)			

NE-4, 22 FEB 2024 to 21 MAR 2024

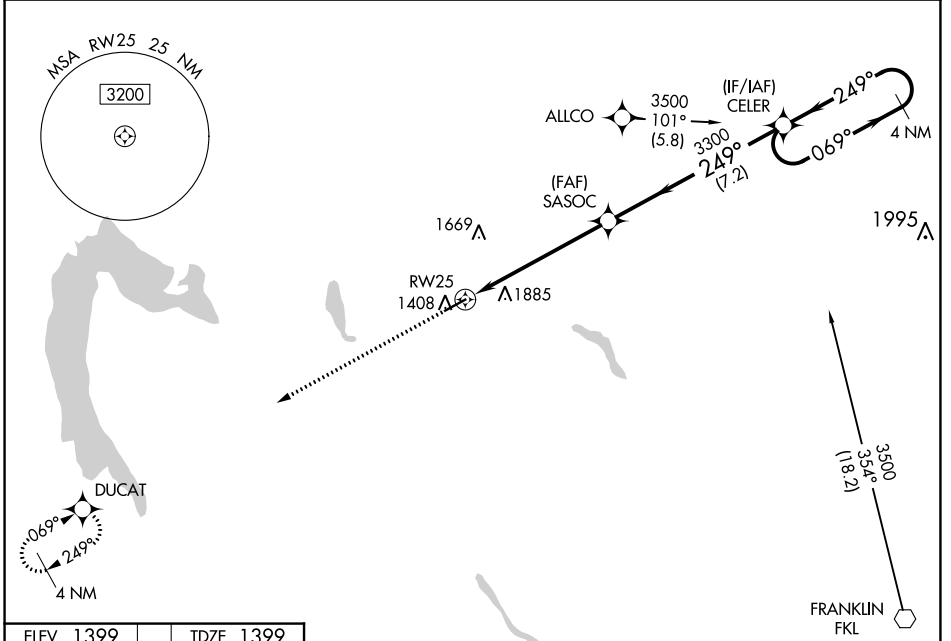
NE-4, 22 FEB 2024 to 21 MAR 2024

WAAS CH <b>45924</b> W25A	APP CRS <b>249°</b>	Rwy ldg TDZE Apt Elev	<b>5001</b> <b>1399</b> <b>1399</b>
---------------------------------	------------------------	-----------------------------	-------------------------------------------

# RNAV (GPS) RWY 25

PORT MEADVILLE (GKJ)

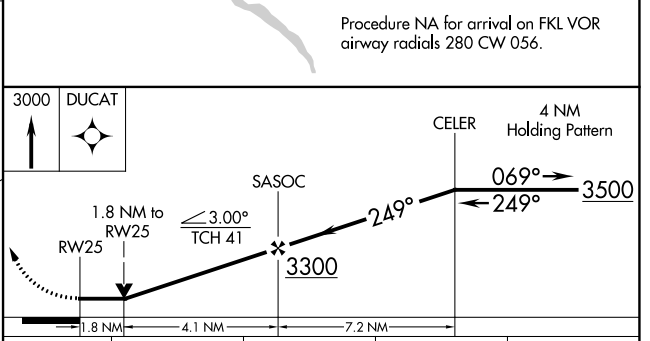
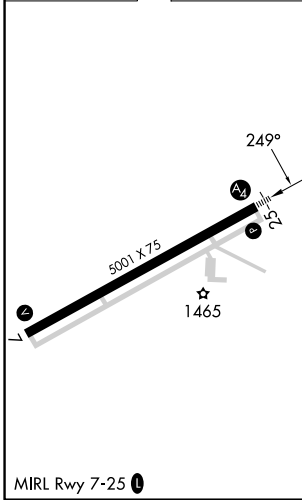
RNP APCH.		MALS	MISSED APPROACH: Climb to 3000 direct DUCAT and hold.
<p><b>⚠</b> Inop table does not apply to LP Cats A and B, and LNAV Cat A. For inop ALS increase LNAV Cats C and D visibility to 2 SM.</p>			
ASOS <b>121.425</b>	YOUNGSTOWN APP CON * <b>133.95 322.3</b>	CLNC DEL <b>124.95</b>	UNICOM <b>123.0 (CTAF)</b>



NE-4, 22 FEB 2024 to 21 MAR 2024

NE-4, 22 FEB 2024 to 21 MAR 2024

ELEV 1399	TDZE 1399
-----------	-----------



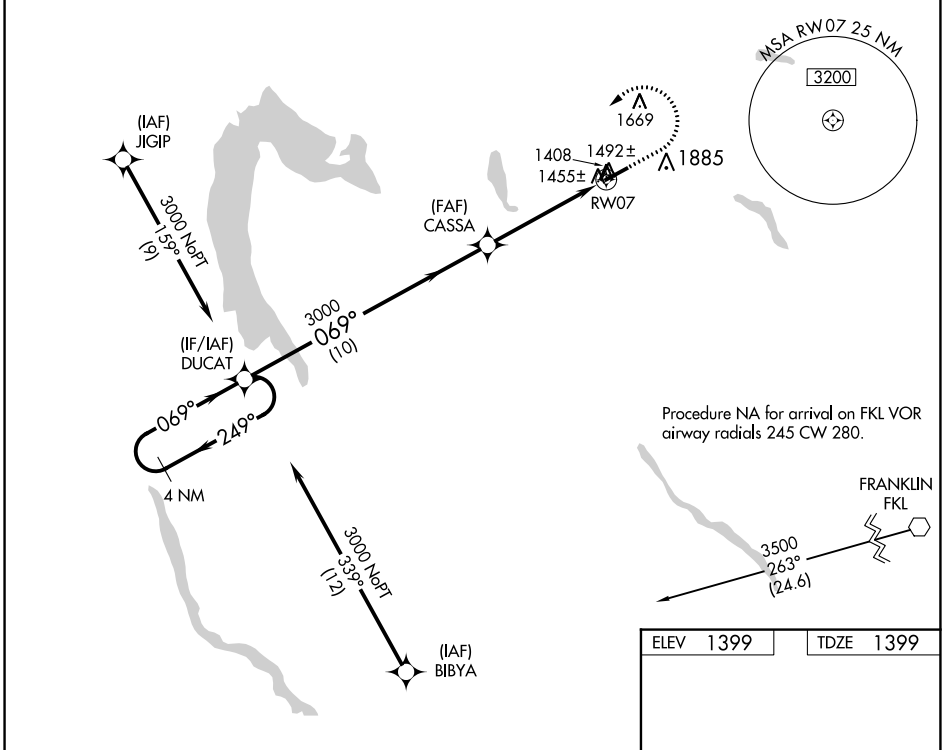
	CATEGORY	A	B	C	D
LP	MDA	2060-1	661 (700-1)	2060-1½	661 (700-1½)
	LNAV MDA	2140-1	741 (800-1)	2140-1¾	741 (800-1¾)
	CIRCLING	2140-1 741 (800-1)	2240-1¼ 841 (900-1¼)	2240-2½ 841 (900-2½)	2240-2¾ 841 (900-2¾)

WAAS CH <b>53724</b> <b>W07A</b>	APP CRS <b>069°</b>	Rwy Idg TDZE Apf Elev	<b>5001</b> <b>1399</b> <b>1399</b>
----------------------------------------	------------------------	-----------------------------	-------------------------------------------

# RNAV (GPS) RWY 7

PORT MEADVILLE (GKJ)

RNP APCH.		MISSED APPROACH: Climb to 1900 then climbing left turn to 3100 direct DUCAT and hold.	
▼ ▲ Rwy 7 helicopter visibility reduction below ¾ SM NA.		ASOS <b>121.425</b>	YOUNGSTOWN APP CON * <b>133.95 322.3</b>
		CLNC DEL <b>124.95</b>	UNICOM <b>123.0 (CTAF) 0</b>



NE-4, 22 FEB 2024 to 21 MAR 2024

NE-4, 22 FEB 2024 to 21 MAR 2024

ELEV 1399	TDZE 1399
-----------	-----------

4 NM Holding Pattern	DUCAT	CASSA	1900	3100	DUCAT
3000	← 249°	→ 069°	3000	1 NM to RWY 7	3.00° TCH 58
10 NM		3.9 NM	1 NM		
CATEGORY	A	B	C	D	
LP MDA	1760-1		361 (400-1)		
LNVA MDA	1860-1	461 (500-1)	1860-1 3/8	461 (500-1 3/8)	
CIRCLING	1900-1 501 (600-1)	2240-1 1/4 841 (900-1 1/4)	2240-2 1/2 841 (900-2 1/2)	2240-2 3/4 841 (900-2 3/4)	