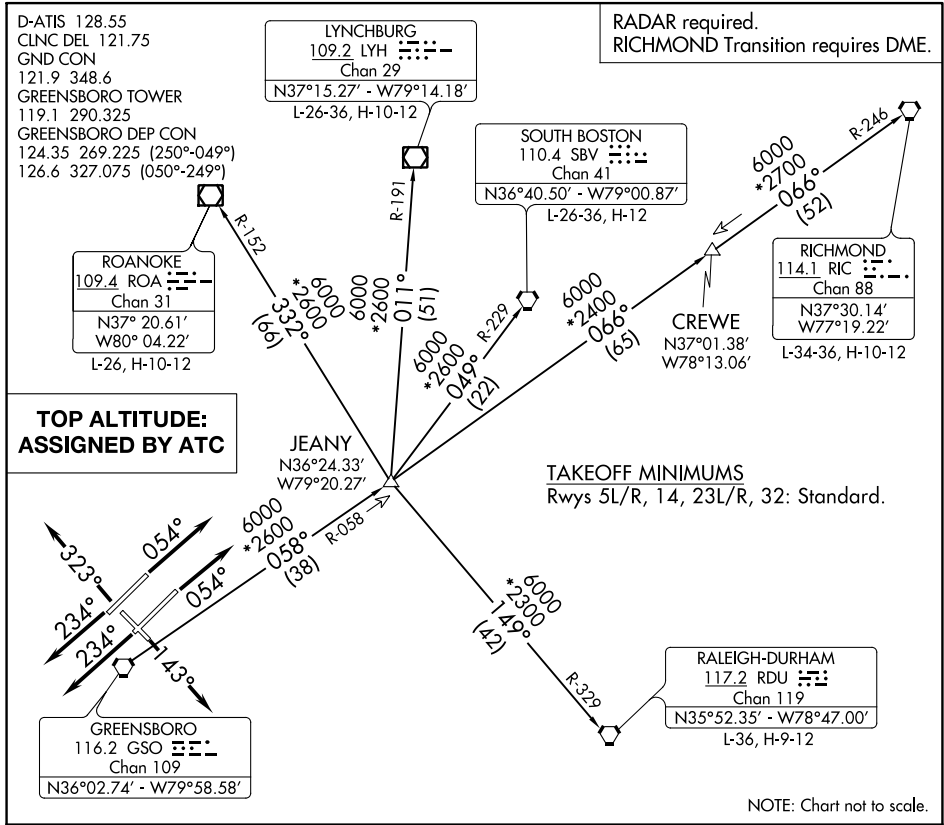


# QUAKER EIGHT DEPARTURE



SE-2, 22 FEB 2024 to 21 MAR 2024

SE-2, 22 FEB 2024 to 21 MAR 2024

**DEPARTURE ROUTE DESCRIPTION**

**TAKEOFF RUNWAYS 5L/R:** Climb on heading 054°, thence. . . .

**TAKEOFF RUNWAY 14:** Climb on heading 143°, thence. . . .

**TAKEOFF RUNWAYS 23L/R:** Climb on heading 234°, thence. . . .

**TAKEOFF RUNWAY 32:** Climb on heading 323°, thence. . . .

. . . .maintain altitude assigned by ATC. RADAR vectors will be provided to intercept assigned radial associated with the issued transition, or if no transition assigned, RADAR vectors will be provided to the appropriate fix. Expect requested altitude/flight level 10 minutes after departure.

**LYNCHBURG TRANSITION (QUAK8.LYH):** From over GSO VORTAC on GSO R-058 to JEANY then on LYH R-191 to LYH VOR/DME.

**RALEIGH/DURHAM TRANSITION (QUAK8.RDU):** From over GSO VORTAC on GSO R-058 to JEANY then on RDU R-329 to RDU VORTAC.

**RICHMOND TRANSITION (QUAK8.RIC):** From over GSO VORTAC on GSO R-058 to JEANY then on GSO R-058 and RIC R-246 to CREWE then on RIC R-246 to RIC VORTAC.

**ROANOKE TRANSITION (QUAK8.ROA):** From over GSO VORTAC on GSO R-058 to JEANY then on ROA R-152 to ROA VOR/DME.

**SOUTH BOSTON TRANSITION (QUAK8.SBV):** From over GSO VORTAC on GSO R-058 to JEANY then on SBV R-229 to SBV VORTAC.

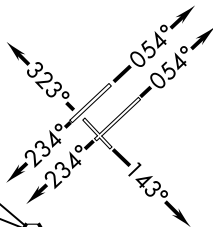
# TRIAD NINE DEPARTURE

D-ATIS 128.55  
 CLNC DEL 121.75  
 GND CON  
 121.9 348.6  
 GREENSBORO TOWER  
 119.1 290.325  
 GREENSBORO DEP CON  
 124.35 269.225 (250°-049°)  
 126.6 327.075 (050°-249°)

**TOP ALTITUDE:  
 ASSIGNED BY ATC**

**YADKI**  
 N36°22.89'  
 W80°55.15'

**BOTTM**  
 N36°34.09'  
 W80°46.82'



**GREENSBORO**  
 116.2 GSO   
 Chan 109  
 N36°02.74'-W79°58.58'

**BARRETT'S MOUNTAIN**  
 113.75 BZM   
 Chan 84(Y)  
 N35°52.13'-W81°14.43'

**BOLTT**  
 N35°37.48'  
 W80°11.07'  
 5000 (27)  
 \*2400  
 \*205°  
 5000 \*2500 (13)  
 190° (68)

**LIBERTY**  
 113.0 LIB   
 Chan 77  
 N35°48.70'-W79°36.76'

**CARWN**  
 N35°32.63'  
 W80°25.73'

**CLINE**  
 N34°55.45'  
 W80°08.61'  
 L-25-36

**TAKEOFF MINIMUMS**  
 Rwy's 5L/R, 14, 23L/R, 32: Standard.

NOTE: RADAR and DME required.

NOTE: Chart not to scale.

SE-2, 22 FEB 2024 to 21 MAR 2024

SE-2, 22 FEB 2024 to 21 MAR 2024



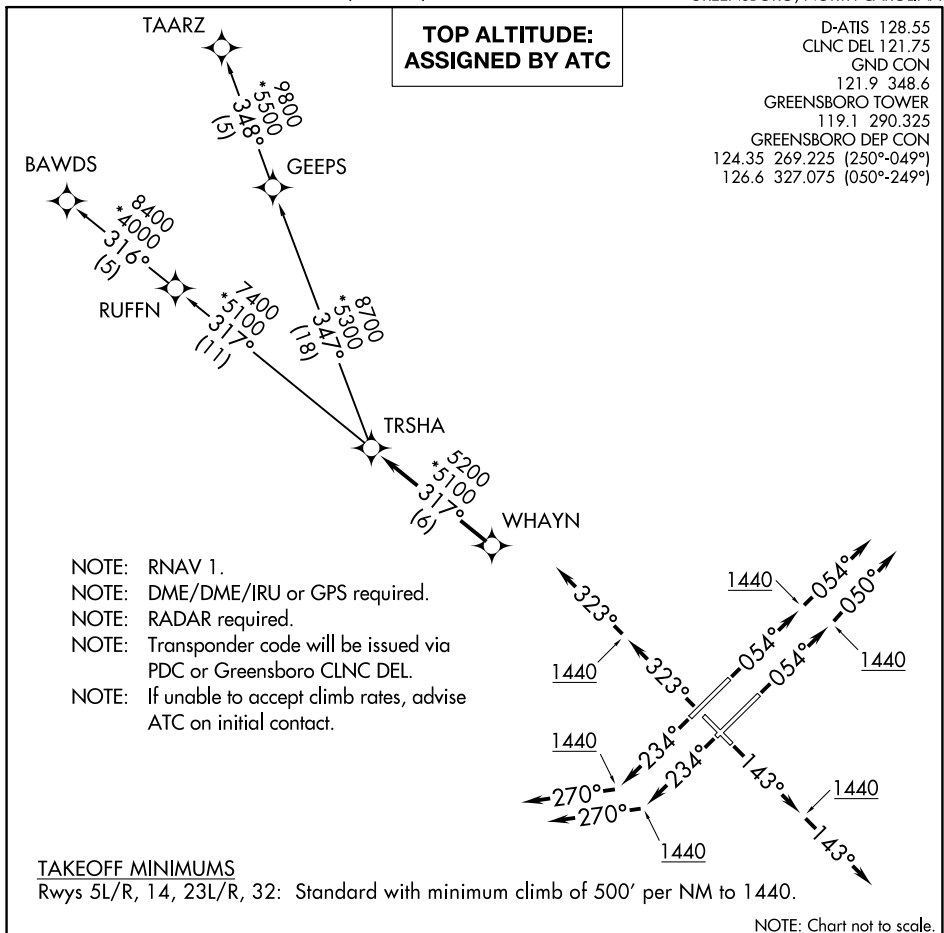
## DEPARTURE ROUTE DESCRIPTION

- TAKEOFF RWYS 5L/R:** Climb heading 054°, thence. . . .
- TAKEOFF RWY 14:** Climb heading 143°, thence. . . .
- TAKEOFF RWYS 23L/R:** Climb heading 234°, thence. . . .
- TAKEOFF RWY 32:** Climb heading 323°, thence. . . .

. . . maintain altitude assigned by ATC. Expect vector to intercept assigned radial associated with the issued transition. Proceed via the depicted radial to the transition fix, thence as filed. If no transition assigned, expect vector to the appropriate fix. Expect requested altitude/flight level ten (10) minutes after departure.

- BOTTM TRANSITION (TRI9.BOTTM):** Expect vector to intercept GSO R-312 to BOTTM.
- CARWN TRANSITION (TRI9.CARWN):** Expect vector to intercept GSO R-205 to BOLTT, then on LIB R-251 to CARWN.
- CLINE TRANSITION (TRI9.CLINE):** Expect vector to intercept GSO R-190 to CLINE.
- YADKI TRANSITION (TRI9.YADKI):** Expect vector to intercept GSO R-297 to YADKI.

# TRSHA ONE DEPARTURE (RNAV)



## DEPARTURE ROUTE DESCRIPTION

- TAKEOFF RWY 5L: Climb heading 054° to 1440, then on heading 054°. Thence. . .
- TAKEOFF RWY 5R: Climb heading 054° to 1440, then on heading 050°. Thence. . .
- TAKEOFF RWY 14: Climb heading 143° to 1440, then on heading 143°. Thence. . .
- TAKEOFF RWY 23L/R: Climb heading 234° to 1440, then on heading 270°. Thence. . .
- TAKEOFF RWY 32: Climb heading 323° to 1440, then on heading 323°. Thence. . .

. . . expect RADAR vectors to WHAYN, then on track 317° to TRSHA, then on assigned transition. Maintain altitude assigned by ATC. Expect clearance to filed altitude within ten (10) minutes after departure.

- BAWDS TRANSITION (TRSHA1.BAWDS)
- TAARZ TRANSITION (TRSHA1.TAARZ)