

LOC/DME I-DCI 110.3 Chan 40	APP CRS 350°	Rwy Idg 8900 TDZE 4665 Apt Elev 4697
--	------------------------	---

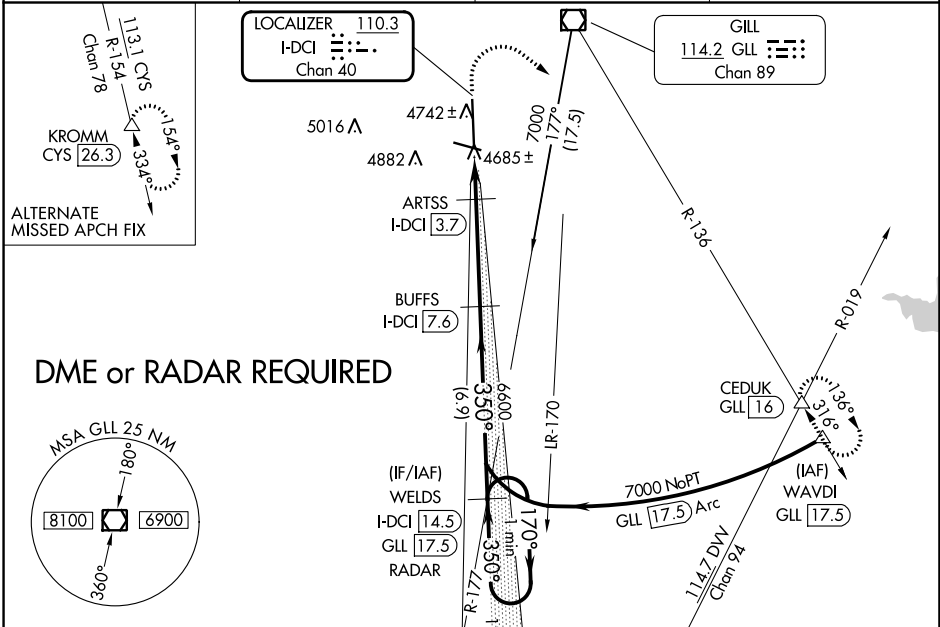
ILS or LOC RWY 35

GREELEY-WELD COUNTY (GXY)

⚠ VDP NA when using Northern Colorado Rgnl altimeter setting. When local altimeter not received, use Northern Colorado Rgnl altimeter setting and increase DA to 4950 feet and all visibilities ¼ SM; increase all MDAs 100 feet and visibility Cats C and D ½ SM.

MISSED APPROACH: Climb to 5300 then climbing right turn to 7000 on heading 120° and GLL VOR/DME R-136 to CEDUK INT/GLL 16 DME and hold.

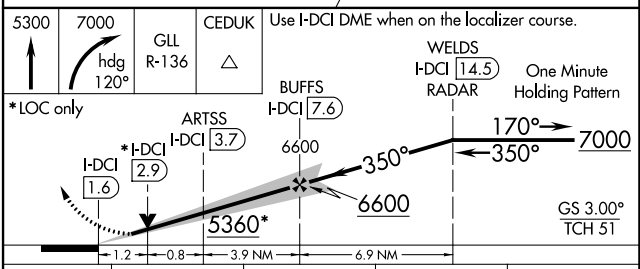
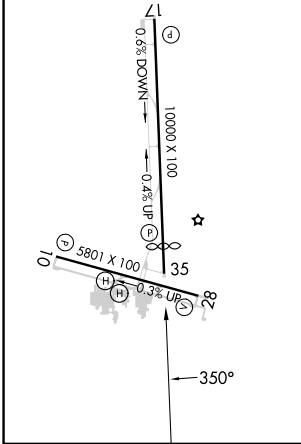
AWOS-3PT 135.175	DENVER APP CON 134.85 251.125	CLNC DEL 126.65	UNICOM 122.8 (CTAF) ①
----------------------------	---	---------------------------	---------------------------------



DME or RADAR REQUIRED

ELEV 4697	TDZE 4665
------------------	------------------

REIL Rwy 10, 17, 28 and 35
MIRL Rwy 10-28 and 17-35



CATEGORY	A	B	C	D
S-ILS 35	4865-¾ 200 (200-¾)			
S-LOC 35	5100-1	435 (500-1)	5100-1¼	435 (500-1¼)
C CIRCLING	5120-1 423 (500-1)	5200-1 503 (600-1)	5200-1½ 503 (600-1½)	5380-2¼ 683 (700-2¼)

SW-1, 22 FEB 2024 to 21 MAR 2024

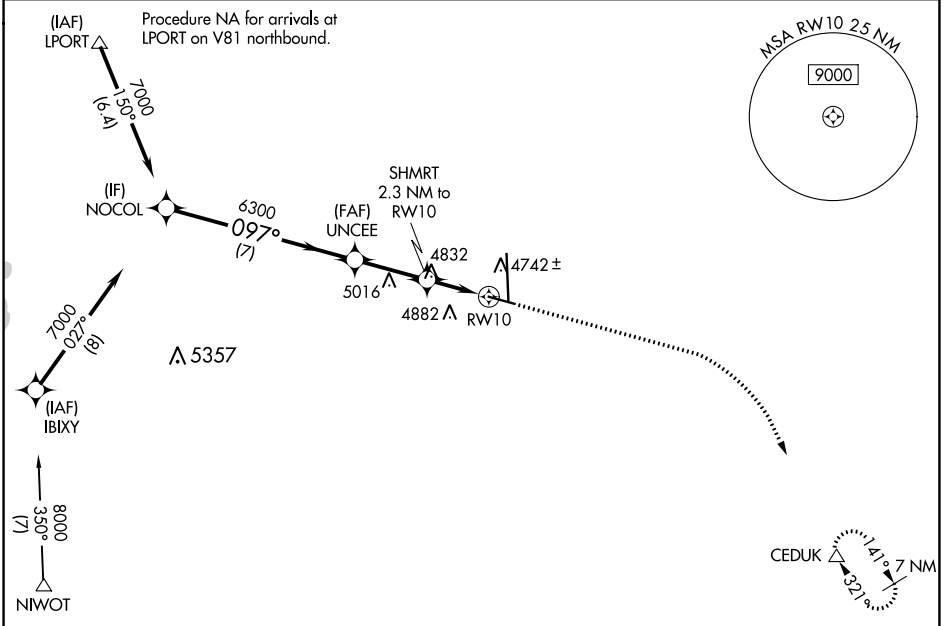
SW-1, 22 FEB 2024 to 21 MAR 2024

WAAS CH 62900 W10A	APP CRS 097°	Rwy Idg TDZE Apt Elev	5801 4661 4697
---------------------------------	------------------------	-----------------------------	---

RNAV (GPS) RWY 10

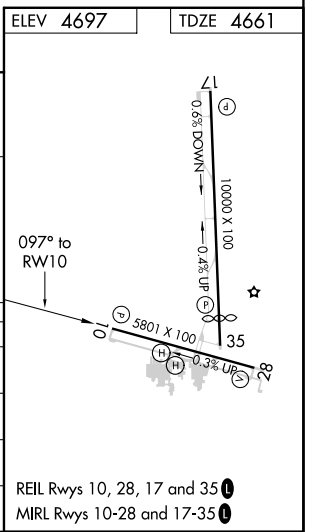
GREELEY-WELD COUNTY (GXY)

RNP APCH.		MISSED APPROACH: Climb to 5400 then climbing right turn to 7000 direct CEDUK and hold.	
AWOS-3PT 135.175	DENVER APP CON 134.85 251.125	CLNC DEL 126.65	UNICOM 122.8 (CTAF) 0



Procedure NA for arrivals at NOCOL (VGSi Angle 3.00/TCH 43).

	5400	7000	CEDUK
	↑	↷	△
	*LNAV only		
GP 3.00° TCH 50	7000	6300	*5440
	7 NM	2.7 NM	0.9 NM 1.4 NM
CATEGORY	A	B	C
LPV DA		4911-3/4	250 (300-3/4)
LNNAV/VNAV DA		4920-3/4	259 (300-3/4)
LNNAV MDA	5140-1	479 (500-1)	5140-1 3/8 479 (500-1 3/8)
CIRCLING	5140-1 443 (500-1)	5200-1 503 (600-1)	5200-1 1/2 503 (600-1 1/2) 5380-2 1/4 683 (700-2 1/4)



SW-1, 22 FEB 2024 to 21 MAR 2024

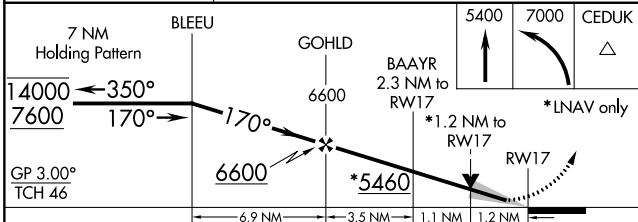
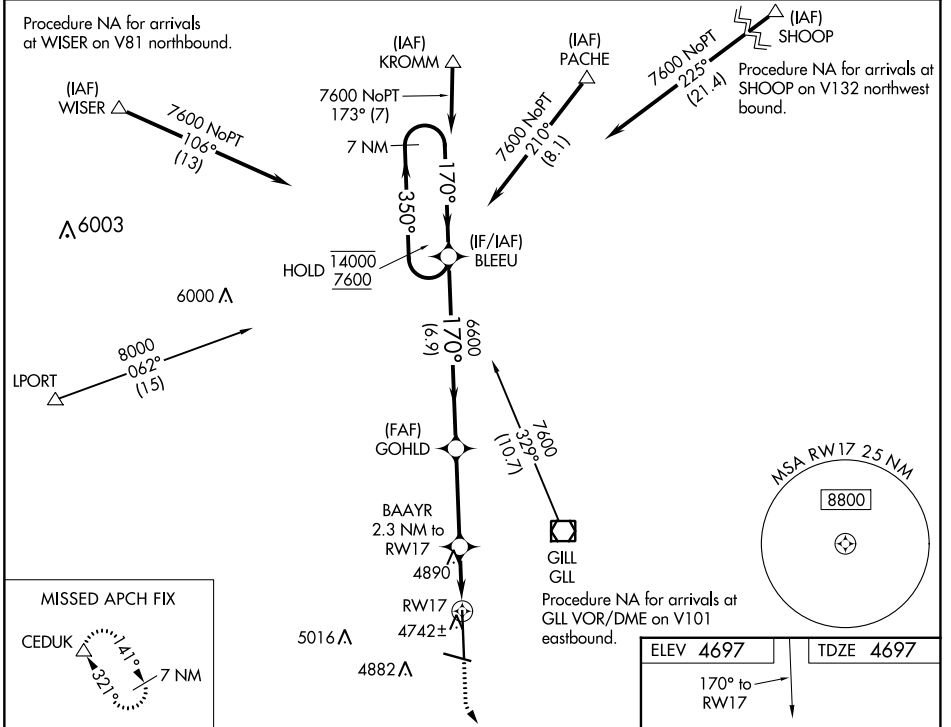
WAAS CH 72708 W 17A	APP CRS 170°	Rwy Idg 10000 TDZE 4697 Apt Elev 4697
---	------------------------	--

RNAV (GPS) RWY 17

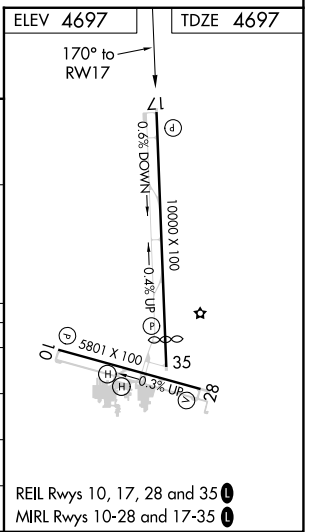
GREELEY-WELD COUNTY (GXY)

RNP APCH. ▼ For uncompensated Baro-VNAV systems, LNAV/VNAV NA below -24°C or above 54°C. ▲	MISSED APPROACH: Climb to 5400 then climbing left turn to 7000 direct CEDUK and hold.
--	---

AWOS-3PT 135.175	DENVER APP CON 134.85 251.125	CLNC DEL 126.65	UNICOM 122.8 (CTAF)
----------------------------	---	---------------------------	-------------------------------



CATEGORY	A	B	C	D
LPV DA		4897-3/4	200 (200-3/4)	
LNAV/VNAV DA		4969-7/8	272 (300-7/8)	
LNAV MDA	5140-1	443 (500-1)	5140-1 1/2 443 (500-1 1/2)	5140-2 1/4 443 (500-2 1/4)
CIRCLING	5140-1 443 (500-1)	5200-1 503 (600-1)	5200-1 1/2 503 (600-1 1/2)	5380-2 1/4 683 (700-2 1/4)



SW-1, 22 FEB 2024 to 21 MAR 2024

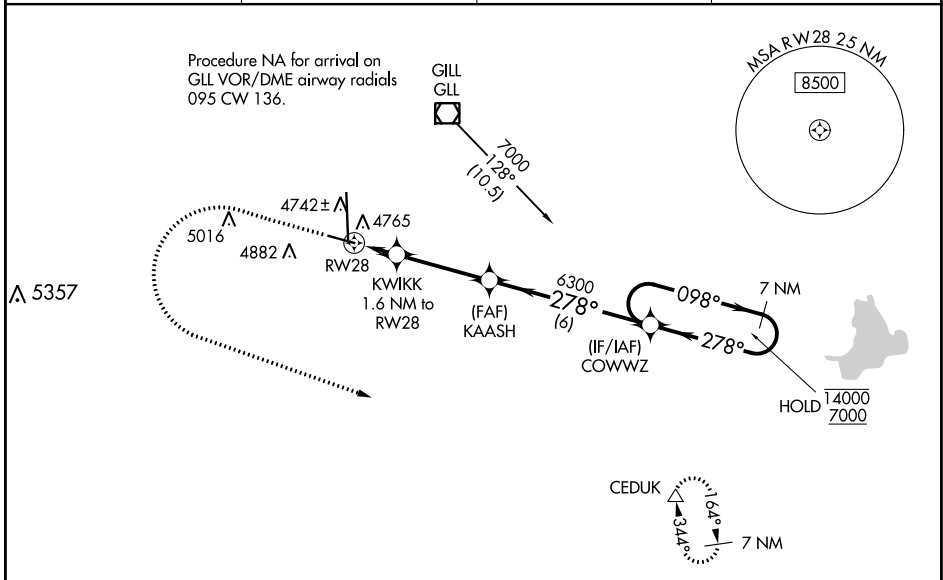
SW-1, 22 FEB 2024 to 21 MAR 2024

WAAS CH 86808 W28A	APP CRS 278°	Rwy Idg TDZE Apt Elev	5801 4650 4697
--	------------------------	-----------------------------	---

RNAV (GPS) RWY 28

GREELEY-WELD COUNTY (GXY)

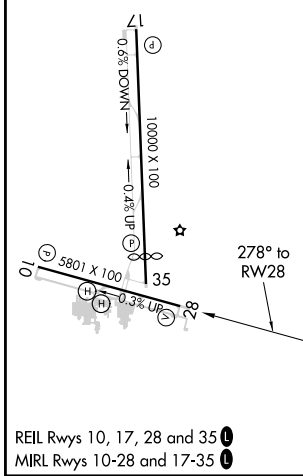
RNP APCH.		MISSED APPROACH: Climb to 6300 then climbing left turn to 7000 direct CEDUK and hold.	
AWOS-3PT 135.175	DENVER APP CON 134.85 251.125	CLNC DEL 126.65	UNICOM 122.8 (CTAF) 0



SW-1, 22 FEB 2024 to 21 MAR 2024

SW-1, 22 FEB 2024 to 21 MAR 2024

ELEV 4697	TDZE 4650
------------------	------------------



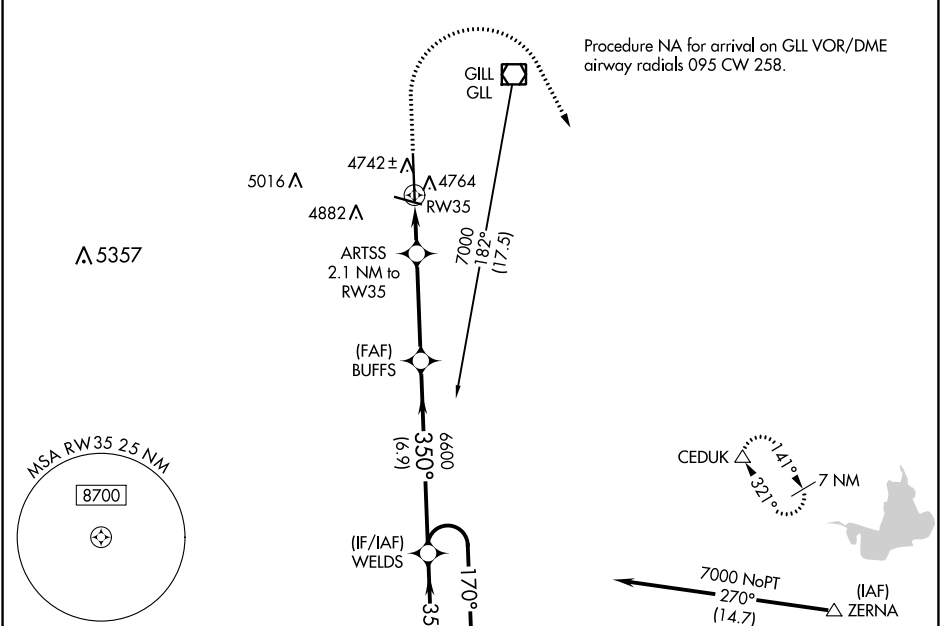
6300	7000	CEDUK	VGSi and RNAV glidepath not coincident (VGSi angle 3.00/TCH 27).		7 NM Holding Pattern
*LNAV only	*KWIKK 1.6 NM to RW28	KAASH	6300	COWWZ	GP 3.00° TCH 50
5200		6300	278°	098°	14000
1.6 NM		3.5 NM	6 NM	278°	7000
CATEGORY	A	B	C	D	
LPV DA	4850-3/4		200 (200-3/4)		
LNAV/VNAV DA	4976-1		326 (300-1)		
LNAV MDA	5080-1	430 (400-1)	5080-1 1/4	430 (400-1 1/4)	
C CIRCLING	5120-1 423 (500-1)	5200-1 503 (600-1)	5200-1 1/2 503 (600-1 1/2)	5380-2 1/4 683 (700-2 1/4)	

WAAS CH 69607 W35A	APP CRS 350°	Rwy Idg TDZE Apt Elev	8900 4665 4697
--	------------------------	-----------------------------	---

RNAV (GPS) RWY 35

GREELEY-WELD COUNTY (GXY)

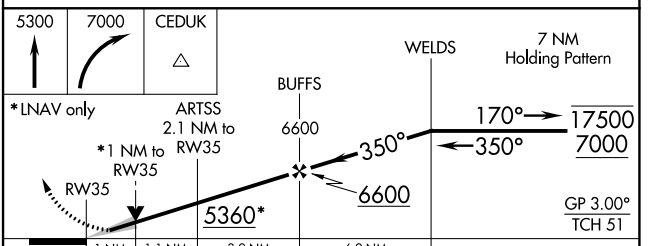
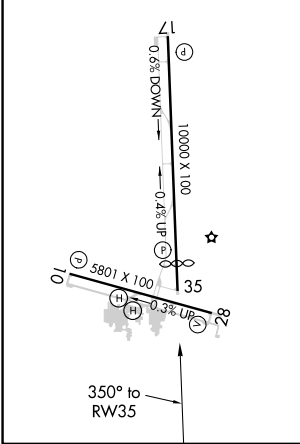
RNP APCH.		MISSED APPROACH: Climb to 5300 then climbing right turn to 7000 direct CEDUK and hold.	
AWOS-3PT 135.175		DENVER APP CON 134.85 251.125	
		CLNC DEL 126.65	
		UNICOM 122.8 (CTAF)	



SW-1, 22 FEB 2024 to 21 MAR 2024

SW-1, 22 FEB 2024 to 21 MAR 2024

ELEV 4697	TDZE 4665
REIL Rwy's 10, 17, 28 and 35	
MIRL Rwy's 10-28 and 17-35	



CATEGORY	A	B	C	D
LPV DA		4865- ³ / ₄	200 (200- ³ / ₄)	
LNAV/ VNAV DA		4935- ⁷ / ₈	270 (300- ⁷ / ₈)	
LNAV MDA	5020-1	355 (400-1)	5020-1 ¹ / ₈	355 (400-1 ¹ / ₈)
<input checked="" type="checkbox"/> CIRCLING	5120-1 423 (500-1)	5200-1 503 (600-1)	5200-1 ¹ / ₂ 503 (600-1 ¹ / ₂)	5380-2 ¹ / ₄ 683 (700-2 ¹ / ₄)

VOR/DME GLL 114.2 Chan 89	APP CRS 209°	Rwy Idg TDZE Apt Elev 4697	N/A N/A 4697
---	------------------------	--	---

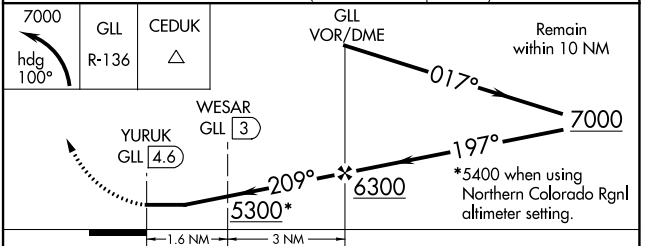
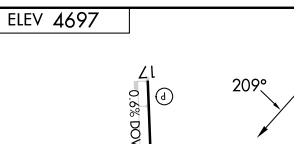
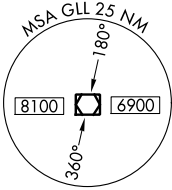
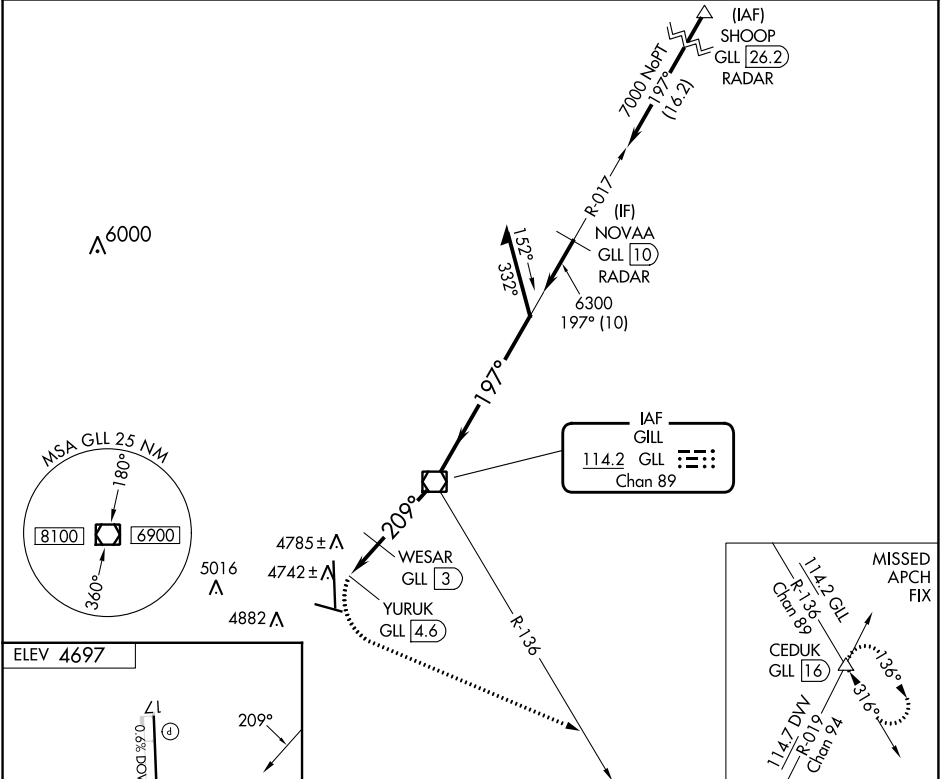
VOR-A

GREELEY-WELD COUNTY (GXY)

⚠ When local altimeter setting not received, use Northern Colorado Rgnl altimeter setting and increase all MDA 100 feet and visibility Cat C/D and WESAR fix minimums Cat C/D visibility ¼ SM. DME required.

MISSED APPROACH: Climbing left turn to 7000 on heading 100° and GLL VOR/DME R-136 to CEDUK INT/GLL 16 DME and hold.

AWOS-3PT 135.175	DENVER APP CON 134.85 251.125	CLNC DEL 126.65	UNICOM 122.8 (CTAF)
----------------------------	---	---------------------------	-------------------------------



REIL Rwys 10, 28, 17 and 35
MIRL Rwys 10-28 and 17-35

FAF to MAP 4.6 NM

Knots	60	90	120	150	180
Min:Sec	4:36	3:04	2:18	1:50	1:32

7000	GLL R-136	CEDUK	GLL VOR/DME	Remain within 10 NM
5300*	YURUK GLL 4.6	WESAR GLL 3	6300	017°
5300*	209°	197°	7000	

*5400 when using Northern Colorado Rgnl altimeter setting.

SW-1, 22 FEB 2024 to 21 MAR 2024

SW-1, 22 FEB 2024 to 21 MAR 2024