

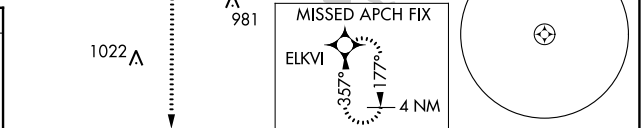
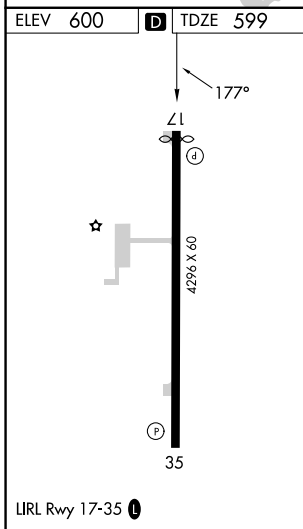
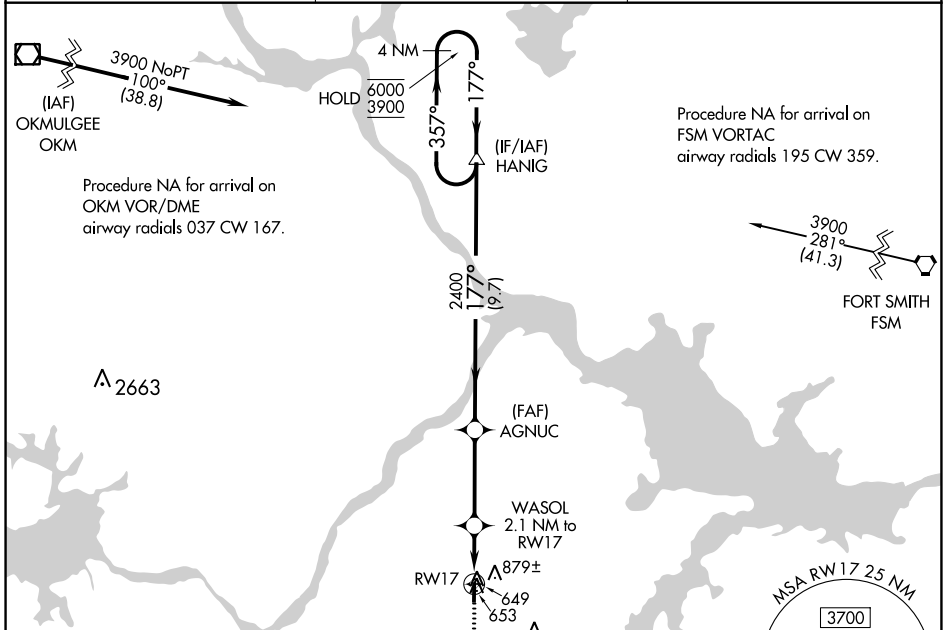
WAAS CH 65822 W17A	APP CRS 177°	Rwy Idg TDZE 599 Apt Elev 600	4200
--	------------------------	---	-------------

RNAV (GPS) RWY 17

STIGLER RGNL (GZL)

RNP APCH. ▼ Rwy 17 helicopter visibility reduction below 1 SM NA. Procedure NA at night.	MISSED APPROACH: Climb to 3900 direct ELKVI and hold, continue climb-in-hold to 3900.
--	--

AWOS-3PT 118.575	FORT WORTH CENTER 132.2 338.35	CTAF 122.90
----------------------------	--	-----------------------



3900	ELKVI	Visual Segment - Obstacles.	4 NM
		AGNUC	HANIG Holding Pattern
		WASOL 2.1 NM to RWY 17	357° → 6000
		RWY 17	← 177° 3900
		1300	2400
		2.1 NM	3.4 NM
		9.7 NM	

CATEGORY	A	B	C	D
LP MDA	900-1	301 (300-1)		NA
LNAV MDA	1020-1	421 (500-1)		NA
C CIRCLING	1180-1	580 (600-1)		NA

SC-1, 22 FEB 2024 to 21 MAR 2024

SC-1, 22 FEB 2024 to 21 MAR 2024

STIGLER, OKLAHOMA

AL-9467 (FAA)

23166

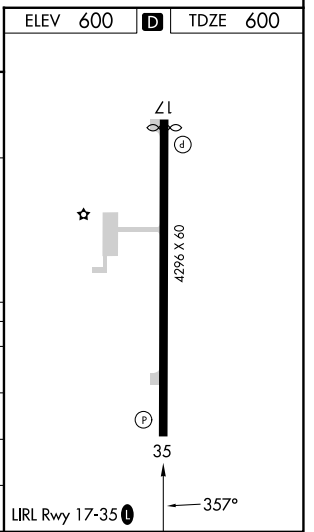
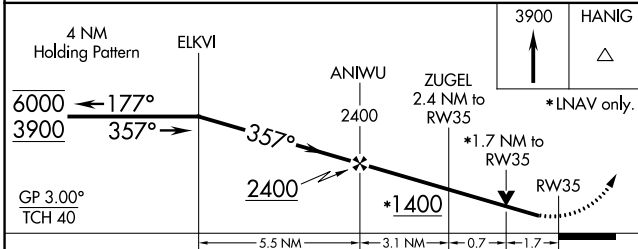
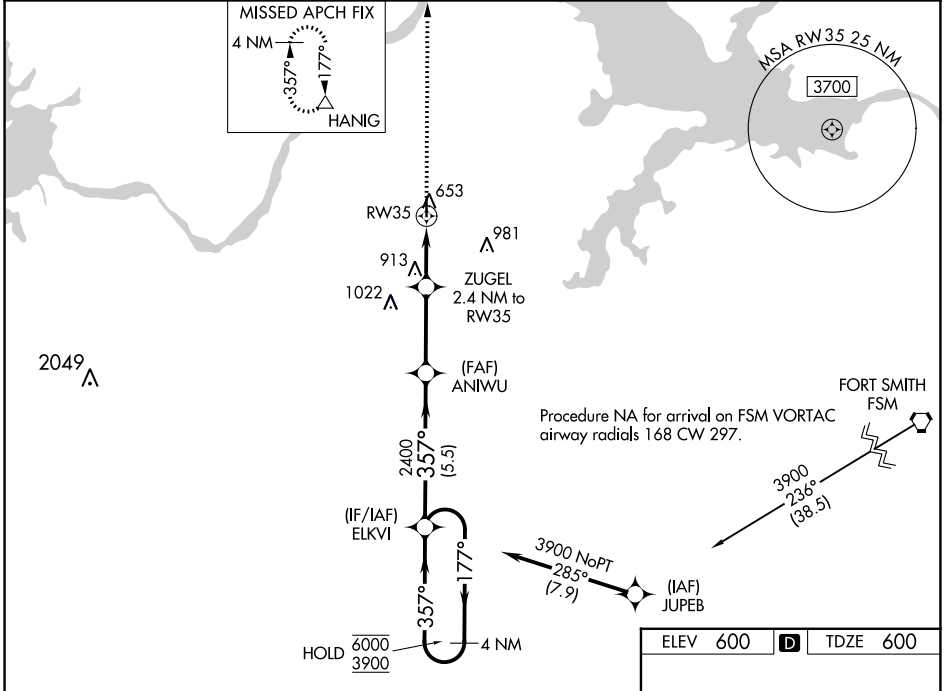
WAAS CH 82522 W35A	APP CRS 357°	Rwy Idg TDZE Apt Elev	4296 600 600
--	------------------------	-----------------------------	---

RNAV (GPS) RWY 35

STIGLER RGNL (GZL)

RNP APCH.	MISSED APPROACH: Climb to 3900 direct HANIG and hold.
-----------	---

AWOS-3PT 118.575	FORT WORTH CENTER 132.2 338.35	CTAF 122.9
----------------------------	--	----------------------



CATEGORY	A	B	C	D
LPV DA	850-1	250 (300-1)		NA
LNAV/VNAV DA	867-1	267 (300-1)		NA
LNAV MDA	1180-1	580 (600-1)		NA
C CIRCLING	1180-1	580 (600-1)		NA

STIGLER, OKLAHOMA
Amdt 1D 05DEC19

35°17'N-95°06'W

RNAV (GPS) RWY 35

STIGLER RGNL (GZL)

SC-1, 22 FEB 2024 to 21 MAR 2024

SC-1, 22 FEB 2024 to 21 MAR 2024