

LOC/DME I-HRJ <b>108.35</b> Chan 20(Y)	APP CRS <b>048°</b>	Rwy Idg TDZE <b>195</b> Apt Elev <b>202</b>	<b>5005</b>
--	------------------------	---	-------------

# LOC RWY 5

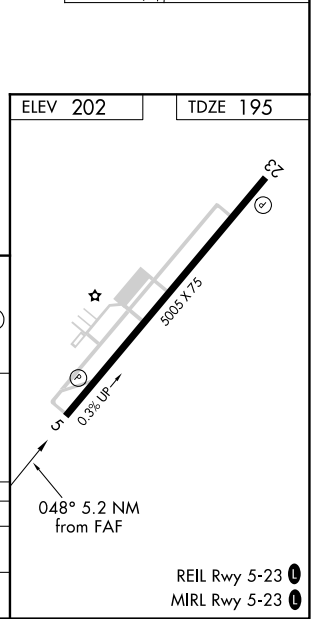
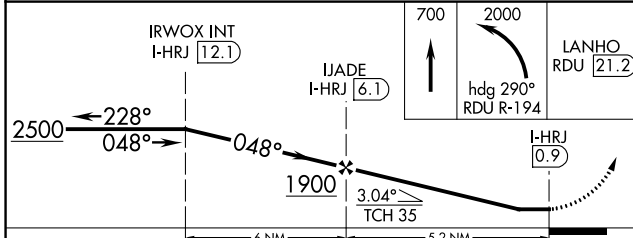
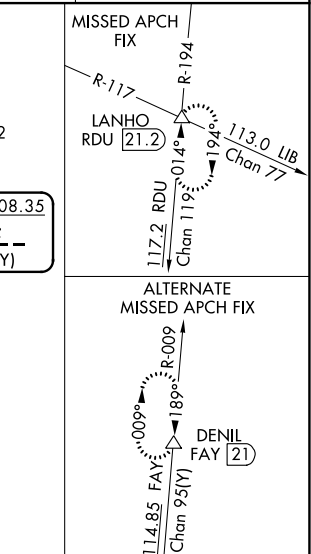
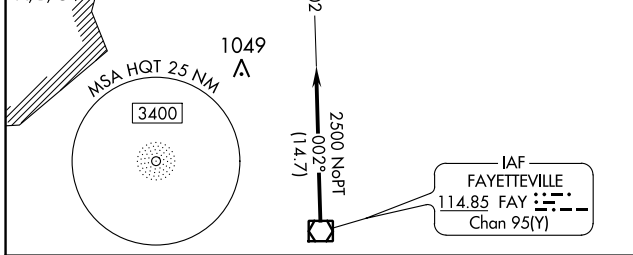
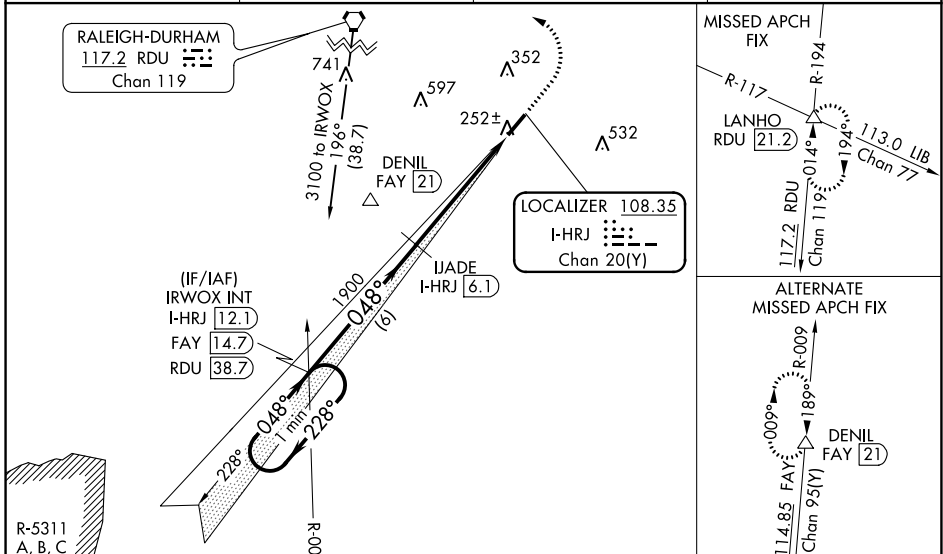
HARNETT RGNL JETPORT (HRJ)

DME required.

⚠ Rwy 5 helicopter visibility reduction below 1 SM NA. When local altimeter setting not received, use Smithfield altimeter setting and increase all MDAs 60 feet and S-5 Cat C visibility 1/8 SM and Circling Cat C visibility 1/4 SM.

MISSED APPROACH: Climb to 700 then climbing left turn to 2000 on heading 290° and RDU R-194 to LANHO INT/RDU 21.2 DME and hold.

AWOS-3 <b>119.025</b>	FAYETTEVILLE APP CON <b>125.175 285.575</b>	GCO <b>135.075</b>	UNICOM <b>122.7 (CTAF) 0</b>
--------------------------	--	-----------------------	---------------------------------



CATEGORY	A	B	C	D
S-5		520-1 325 (400-1)		NA
CIRCLING	620-1 418 (500-1)	720-1 518 (600-1)	780-1½ 578 (600-1½)	NA

REIL Rwy 5-23 0  
MIRL Rwy 5-23 0

SE-2, 19 MAY 2022 to 16 JUN 2022

SE-2, 19 MAY 2022 to 16 JUN 2022

NDB HQT	APP CRS	Rwy Idg	5005
417	230°	TDZE	202
		Apt Elev	202

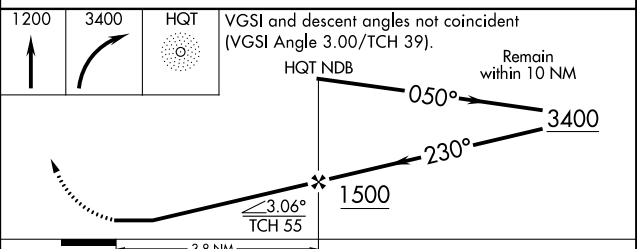
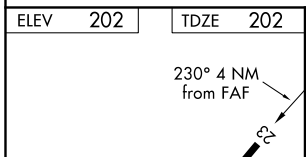
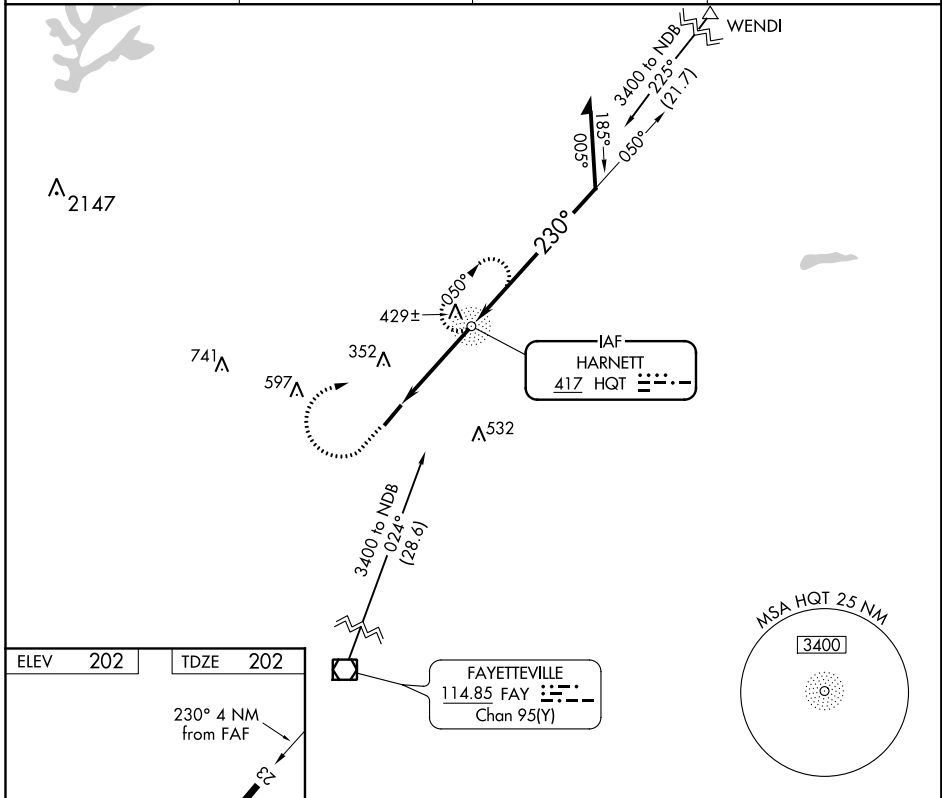
# NDB RWY 23

HARNETT RGNL JETPORT (HRJ)

When local altimeter setting not received, use Smithfield altimeter setting and increase all MDA 60 feet, and S-23 and Circling Cat C visibility 1/8 mile. Helicopter visibility reduction below 3/4 SM NA.

MISSED APPROACH: Climb to 1200 then climbing right turn to 3400 direct HQT NDB and hold.

AWOS-3 119.025	FAYETTEVILLE APP CON 125.175 285.575	GCO 135.075	UNICOM 122.7 (CTAF)
-------------------	---	----------------	------------------------



	REIL Rwy 5-23	
	MIRL Rwy 5-23	
FAF to MAP 3.8 NM		
Knots	60	90 120 150 180
Min:Sec	3:48	2:32 1:54 1:31 1:16
CATEGORY	A	B C D
S-23	780-1 578 (600-1)	780-1 578 (600-1 1/2) NA
CIRCLING	780-1 578 (600-1)	780-1 578 (600-1 1/2) NA

SE-2, 19 MAY 2022 to 16 JUN 2022

SE-2, 19 MAY 2022 to 16 JUN 2022

WAAS CH <b>45904</b> <b>W23A</b>	APP CRS <b>228°</b>	Rwy Idg TDZE Apt Elev	<b>5005</b> <b>202</b> <b>202</b>
--	------------------------	-----------------------------	---

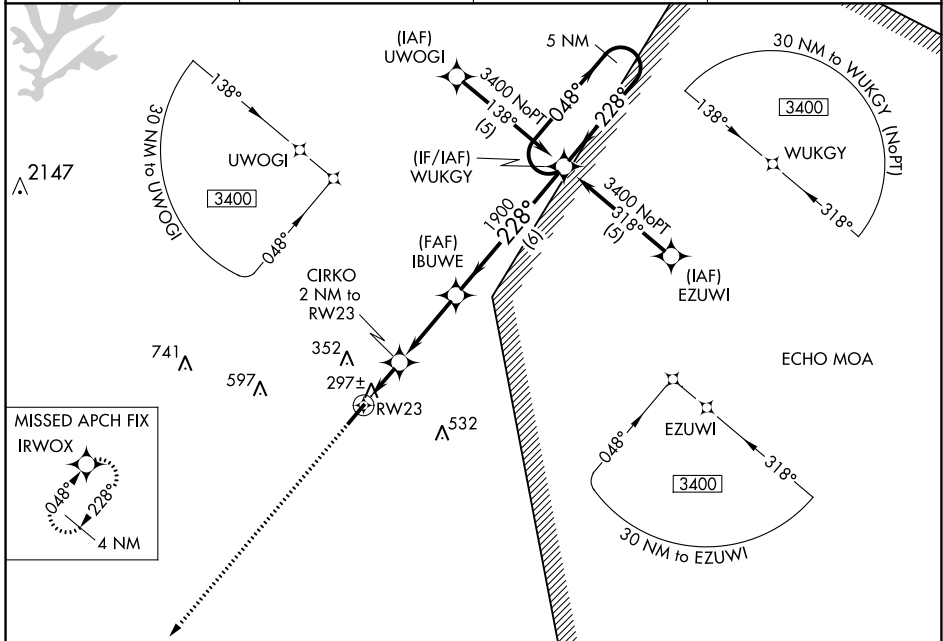
# RNAV (GPS) RWY 23

HARNETT RGNL JETPORT (HRJ)

When local altimeter setting not received, use Smithfield altimeter setting and increase LPV DA to 611 feet and all visibilities 1/4 SM; increase all MDA 60 feet and visibility LNAV Cat C and Circling Cat C 1/4 SM. DME/DME RNP-0.3 NA. Visibility reduction by helicopters NA. VDP NA when using Smithfield altimeter setting.

**MISSED APPROACH:**  
Climb to 2500 direct IRWOX and hold.

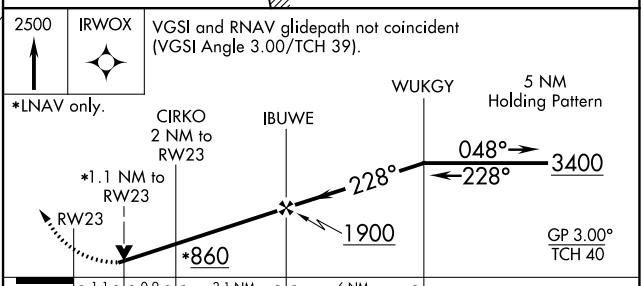
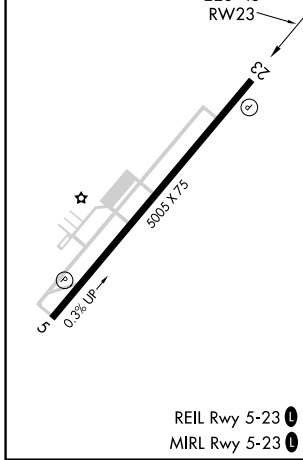
AWOS-3 <b>119.025</b>	FAYETTEVILLE APP CON <b>125.175 285.575</b>	GCO <b>135.075</b>	UNICOM <b>122.7 (CTAF)</b>
--------------------------	--	-----------------------	-------------------------------



SE-2, 19 MAY 2022 to 16 JUN 2022

SE-2, 19 MAY 2022 to 16 JUN 2022

ELEV <b>202</b>	TDZE <b>202</b>
-----------------	-----------------



CATEGORY	A	B	C	D
LPV DA	551-1 1/4 349 (400-1 1/4)			NA
LNAV MDA	600-1 398 (400-1)			NA
CIRCLING	620-1 418 (500-1)	720-1 518 (600-1)	780-1 1/2 578 (600-1 1/2)	NA

WAAS CH <b>66004</b> <b>W05A</b>	APP CRS <b>048°</b>	Rwy Idg TDZE Apt Elev	<b>5005</b> <b>195</b> <b>202</b>
--	------------------------	-----------------------------	---

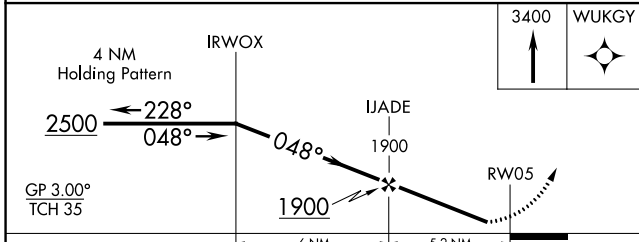
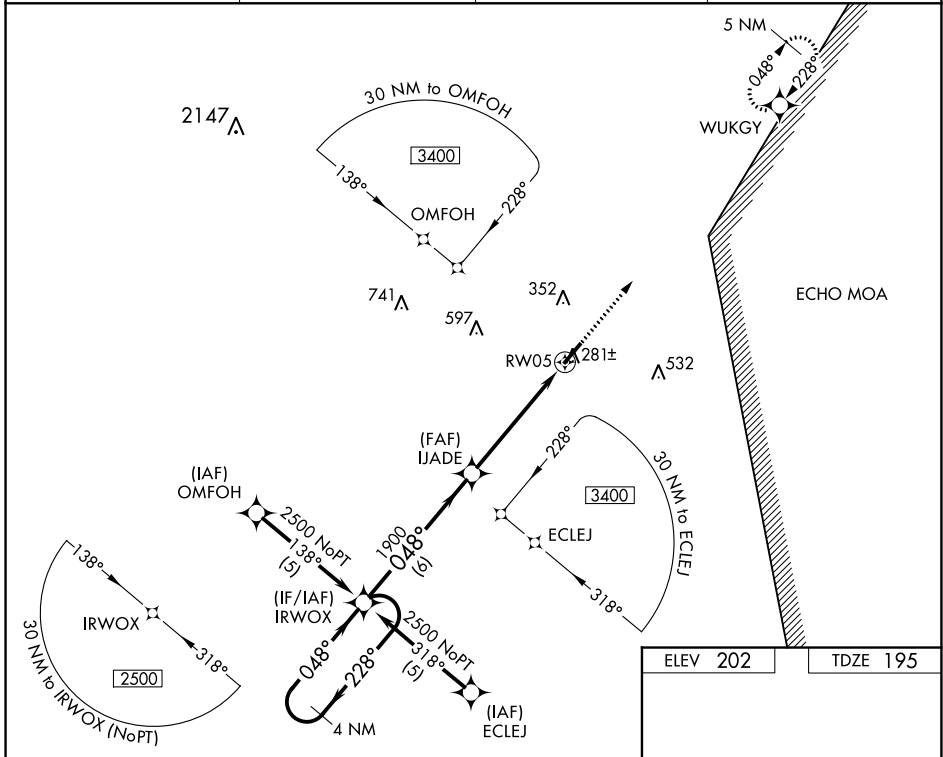
# RNAV (GPS) RWY 5

HARNETT RGNL JETPORT (HRJ)

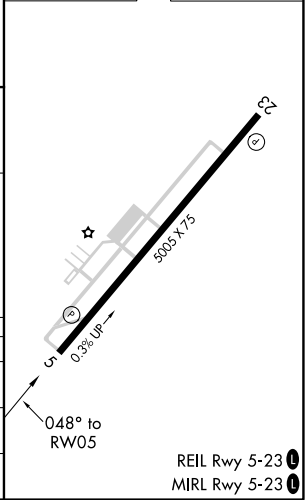
**⚠** DME/DME RNP-0.3 NA. Visibility reduction by helicopters NA. When local altimeter setting not received, use Smithfield altimeter setting and increase LPV DA to 534 feet and all visibilities ¼ SM; increase all MDA 60 feet and visibility LNAV Cat C and Circling Cat C ½ SM.

**MISSED APPROACH:** Climb to 3400 direct WUKGY and hold.

AWOS-3 <b>119.025</b>	FAYETTEVILLE APP CON <b>125.175 285.575</b>	GCO <b>135.075</b>	UNICOM <b>122.7</b> (CTAF) <b>0</b>
--------------------------	--	-----------------------	--



ELEV 202	TDZE 195
----------	----------



CATEGORY	A	B	C	D
LPV DA	474-1	279 (300-1)		NA
LNAV MDA	540-1	345 (400-1)		NA
CIRCLING	620-1 418 (500-1)	720-1 518 (600-1)	780-1½ 578 (600-1½)	NA

SE-2, 19 MAY 2022 to 16 JUN 2022

SE-2, 19 MAY 2022 to 16 JUN 2022